

ECHO NEWS

SINCE 1985

Friday, October 28, 2022

AirCon
SERVICE CENTRE
SERVICE • REPAIRS • INSTALLS

(08) 9250 8988
4/135 CLAYTON STREET,
BELLEVUE WA 6005

MITSUBISHI ELECTRIC AP SERIES
WALL HUNG SPLIT SYSTEMS
SUPPLIED & INSTALLED FROM \$1730.00 INCLUDES GST

contact@airconservicecentre.com.au
www.airconservicecentre.com.au

Local Business Supporting Local People

VOL.42 NO.1787



Top honour PG 4
for quick snap



Lilac Hill in for
a scorcher PG 5



Rollin' on
in the hills

REBECCA PEPIATT

DUST off your skates, pull out your neon socks and get on your game face because roller derby is coming to the hills!

The popular international contact sport is made just as famous for its competitiveness as it is for the way the players dress and the good thing is that the invite to play with the Hillbilly Derby Crew is open to absolutely everyone.

See the full story on P7.

ADVERTISEMENT

Your Representatives in the State Parliament



Matthew Hughes
Member for Kalamunda



Stephen Price
Member for Forrestfield



Alanna Clohesy
Member for East Metro



Samantha Rowe
Member for East Metro



Lorna Harper
Member for East Metro

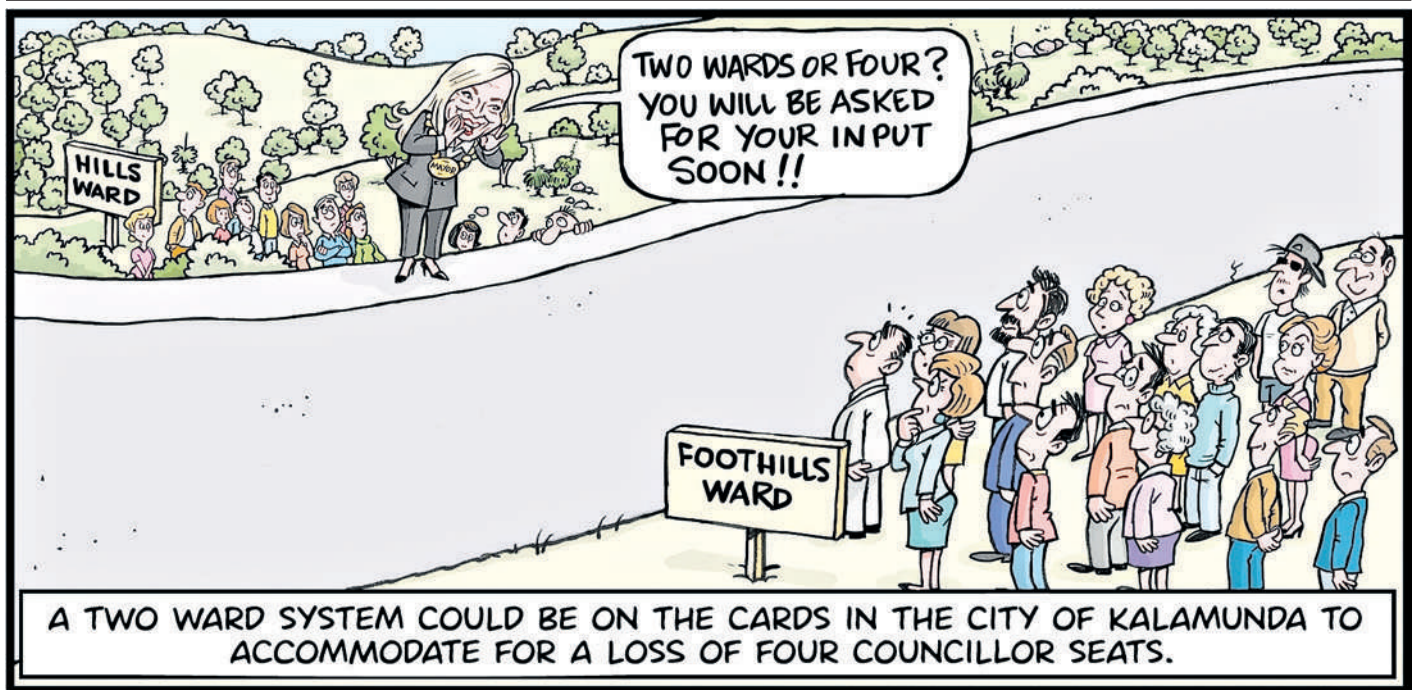
Authorised by Matthew Hughes Shop 9 Kalamunda Central Shopping Centre, Railway Road, Kalamunda



Here to help!
DONNA FARAGHER JP MLC
MEMBER FOR EAST METROPOLITAN REGION

Shadow Minister for Community Services;
Early Childhood Education; Seniors & Ageing; Youth

Ground Floor, 108 Swan Street Guildford 6055
9379 0840 | faragher.eastmetro@mp.wa.gov.au
Authorised by D.Faragher, Ground Floor, 108 Swan Street Guildford WA 6055




The Framing Factory

Framing makes the Perfect Gift!

Get in Early for Christmas Orders



Custom Framing
Original Artwork
Memorabilia

OPEN: Mon-Fri 9am-5.30pm | Saturday 9am-12 noon
Unit 7, 4-10 Farrall Rd, Midvale
Telephone: **9250 1660**
E: sales@theframingfactory.com.au
www.theframingfactory.com.au

ECHO YOUR THOUGHTS

Have your say: editorial@echo-news.com

Services essential

Dear Echo News,
I totally agree with Swan Community Care volunteer driver Ron Carey in *Call to keep care services City-run* (*Echo News*, September 30).

I attend activities at the Swan Hub Community Centre which has been running for many years.

An observation is the great care taken with more senior residents and mutual trust received by Swan Community Care volunteers.

Residents also form new friendships with elder loneliness being a big problem in today's society.

Swan Community Care provides many services, one being The Men's Group.

Ron Carey is a regular volunteer driver/mentor to this important service (most of us are current ratepayers).

Outsourcing of these important services will severely impact so many senior residents.

If an additional fee is charged to keep this important community service going, I'm confident most seniors using the services would support the fees being charged.

R De Saran
Jane Brook

Housing crisis still needs solution

Dear Echo News,
A huge thanks to *Echo News* for the very informative article *Councillors push for homelessness solution*, by Rebecca Peppiatt on October 4.

Good to hear that Cr Patty Jones of City of Swan and Dreambuilders Care, Midland, has been lobbying for solutions for our current dire homelessness crisis in which "priority

public housing waiting lists are over a year long".

As a social scientist and age pensioner who has voluntarily begun local homelessness research and advocacy, I deputised again at the most recent Shire of Mundaring meeting, for the council to develop a homelessness policy and strategy.

It's a first necessary step in helping the local community to have confidence to help others.

Also in this role, I am designing and developing homelessness resolution proposals, aided by homelessness experts and especially those who are currently homeless.

In the article, Minister John Carey confirmed that a feasibility study has already been done into turning the vacant 500 bed Bullsbrook Centre for National Resilience, finding that the Bullsbrook Centre is not suitable for such interim housing.

I have to concur with the finding. I know from research plus years of living as a social worker in various communal living settings, that the usual methods for such communal living for vulnerable cohorts, would not be at all adaptable to the vast Bullsbrook setting.

Nor would it be at all suitable to mix cohorts of different types of vulnerable people.

Unless, that is... there is a new solution designed that would adapt the Bullsbrook site to interim housing with facilitation, for the 'normal families between rentals' cohort.

This is a design possibility that I and others have begun work on, with folk from Parker-ville Baptist Church.

Hence the encouragement and usefulness of the *Echo News* article for us.

S Braun
Mundaring

Thought of the Day

No one cares until someone cares; be that one!
~ Ken Poirt

Grove visit gripe

Dear Echo News,

You can imagine my surprise when I saw recently that Nigel Satterley attended the opening of Robinson Grove Estate located within the Mundaring Shire.

Mr Satterley has refused on a number of occasions, over a number of years to engage with the community about concerns over his proposed development in Stoneville (SP34.)

The North Stoneville saga has been a long-standing issue within the community.

So much so, that the Shire itself has publicly stated they are against the development, with Mundaring council voting unanimously to lodge a scheme amendment with the WAPC to rezone the North Stoneville site back to rural, in line with community concerns and DFES recommendations.

WAPC have also refused Mr Satterley's proposed North Stoneville development over a number of concerns, which he is appealing yet again.

If Mr Satterley can make the trip to celebrate the opening of Robinson Grove, then surely he can make the time for a face-to-face meeting with the community about North Stoneville.

I guess considering the large amount of money Satterley is to make from his development, it was worth his time, but the concerns of our community about environmental destruction and loss of life from bushfires are not?

E Jordan
Swan View

MORM back on the menu

Dear Echo News,

This week a City of Swan councillor has a motion on notice to proceed with the Midland Oval Redevelopment Masterplan (MORM) as adopted by Council in 2018.

This motion is incredulous, disappointing and surprising.

Over several years, many different people from Midland, the broader City of Swan areas and interested WA stakeholders lobbied council on the oval topic and especially campaigned to review the 2018 MORM.

In 2021 we felt relief at the prospect of the called review.

The MORM's primary financial objectives had failed (hence the Sunset Clause recognition), but overall it had failed to present a broader vision that incorporated the social/community desires.

At the heart of the problem was the fact that Midland Oval was bequeathed to the public, hence it should not be considered an asset for the City of Swan to capitalise upon without honouring the needs of the town of Midland for recreational passive space.

Since the review was called, the community awaited the workshoping process under way by the council and community to deliver.

We seek an urban design that incorporates a central park we can be proud of and enjoy with a range of amenity, ringed by appropriate development to provide solid environmental, financial and social 'triple bottom line' outcome for our city.

To date, it is public fact that the City has employed \$70 million capital on the Midland Oval project and over the last 11 years has seen only about \$100,000 net profit.

We still do not have a passive recreation space in the heart of our city and remain a poor example of failed urban design.

Please add your voice and emails, ask City of Swan to persist with the workshoping process and deliver a negotiated outcome.

The alternative takes us all right back to a lose/lose whereas the MORM review is the pathway to a win/win.

Fran Irwin
Woodbridge

The Echo reserves the right to edit letters for length, legal reasons or clarity. The opinions expressed do not necessarily reflect those of the Echo. All letters must contain the author's full name, address and phone number for verification purposes.

ECHO News

ADDRESS:
Unit 4/9 The Avenue
Midland WA 6056
Phone: **9374 6666**

Jocelyn Longley
General Manager 9374 6605

DISPLAY ADVERTISING
sales@echo-news.com

Belinda Lyne 9374 6607
Karon McCracken 9374 6610

CLASSIFIEDS, TRADES & SERVICES ADVERTISING
classifieds@echo-news.com
Jo Hitchcock 9374 6666

EDITORIAL
editorial@echo-news.com
Claire Ottaviano 9374 6603
Morgan de Smidt 9374 6602
Rebecca Peppiatt 9374 6601

PRODUCTION
production@echo-news.com
Jeanene Allen 9374 6613
Liz Rowlands 9374 6613

ACCOUNTS
accounts@echo-news.com
Caprice Harries 9374 6604

OFFICE HOURS:
Monday-Thursday:
9.00am - 5pm
Closed Friday
Closed: Weekends & Public Holidays

 [echonewsmidland](https://www.facebook.com/echo-newsmidland)



Educator Needed

HOSCA is looking for a new team member, if you are passionate, ambitious and kind we would love to hear from you.

QUALIFIED EDUCATORS
LR License or willing to achieve
Permanent Part Time Position
Not for Profit Service
Darlington & Mundaring

Hills Outside School Care Assoc Inc.
Before and After School Care,
Vacation Care for children
aged 4 - 14 years.
If interested, please submit your
resume to hosca@bigpond.com

Candlelit vigil planned for murdered teenager



Cassius Turvey, 15, died after allegedly being bashed with a metal pole while walking along a street in Midland after school.

"It will be alleged that the male exited the vehicle and ran toward the group before assaulting a 15-year-old boy with a metal pole," detective senior sergeant Stephen Cleal from WA Police said in a press conference earlier this week.

"The 21-year-old man from Middle Swan, previously charged with unlawful wounding, has now had that charge upgraded to murder."

Cassius spent five days in hospital before being released and sent home.

Hours later he returned to hospital after suffering a seizure and two strokes.

On October 23, he succumbed to his injuries.

There has been an outpouring of grief throughout the community since news of his death was made public and a GoFundMe page has so far raised almost \$300,000 to go toward funeral expenses and "the fight for justice for Cassius".

"We are seeking funds to cover his funeral, legal costs for

criminal compensation and justice," the page read.

News of his death has spread across the country with rallies now being planned in Perth, Geraldton, Sydney, Adelaide, Canberra and Broome on November 2, as many are now calling for tougher laws for vigilante and hate crimes.

On Wednesday Police Commissioner Col Blanch said Cassius was "an innocent victim of a violent attack.

"He was simply spending time with his friends when he was assaulted," he said.

Cassius was a member of the Koya basketball community run by indigenous community advocate Cheryl Kickett-Tucker in Midland.

"We are totally devastated of the passing of a bright but humble beacon in our community," she said.

"Cassius was an absolutely gorgeous human with a smile that lit up the path ahead of

him. "We are going to miss him dearly."

Police are appealing for anyone who was in the area at the time of the alleged incident to come forward by calling Crime Stoppers on 1800 333 000.

Jack Brearley appeared in Midland Magistrates Court on Monday.

"Our hearts (koort) are broken...but our spirit will rise because of Cassius," Professor Kickett-Tucker said.

REBECCA PEPIATT

ON his favourite day of the year, Halloween, 15-year-old Swan View Senior High School student Cassius Turvey will be remembered with a candlelit vigil

at Midland Oval, just a few kilometres from where he was fatally bashed on October 13.

Cassius was walking home after school along Patterson Drive, just off Lloyd Street, when a black Ford Ranger

pulled up alongside him and some friends.

The car was allegedly being driven by a female whom police have not laid charges on.

Twenty-one-year-old Jack Brearley was in the passenger's seat.

Emaciated dog leads to cruelty and neglect charges

A 47-YEAR-OLD woman has been fined \$5000, and banned from owning or being in contact with pets for three years, after her dog was found emaciated at her Beechboro home.

The Midland Magistrates Court heard an RSPCA WA inspector attended the woman's address in April, following a cruelty report from the City of Swan.

The inspector used a ladder to look over a fence into the backyard. She says she saw a female brindle American Staffordshire crossbreed dog, Rahni, whom she described as 'severely emaciated'.

The outline of the four-year-old dog's hips, ribs and spine were all clearly visible and her eyes sunken.

The inspector was able to reach Rahni's owner on the phone — she said she was away but alleged that she had organised for someone to come in and feed the dog.

When asked for this person's details, the offender declined to give

them to the inspector.

Given Rahni's skinny condition, the lack of any available food, and the dirty state of the yard, the inspector seized her.

A vet examination found Rahni had a body condition score of 2 out of 9.

She had minimal muscle and no palpable fat.

Rahni continues to recover with an RSPCA WA foster carer. She has gained 10kg.

Inspector Manager, Kylie Green, said neglecting an animal's most basic needs remained the number one reason for animal cruelty investigations.

"Allegations of not providing food, water, shelter or vet care make up most of the calls we receive," Inspector Green said.

"They are the minimal, basic requirements of owning a pet and people are falling at the first hurdle time after time.

"If you're going away, it is your responsibility to ensure your pets are looked after."



The woman was convicted under sections 19(1) and 19(3) (d) of the Animal Welfare Act 2002, namely that she was cruel to an animal in that she did not provide sufficient food.

The Magistrate ordered she pay \$638.30

in court and treatment costs to RSPCA WA.

The RSPCA relies on the community to report incidents of suspected cruelty and neglect.

Report cruelty 24/7 on 1300 CRUELTY (1300 278 358) or at rspcawa.org.au

ALL PRODUCE IS PROUDLY SOURCED FROM LOCAL SUPPLIERS





the Lounge
at amaroo

INTIMATE
PICNICS &
POOLSIDE
CABANA HIRE
AVAILABLE
THROUGHOUT
SUMMER



One of the best hidden locations in the Perth Hills!

The Lounge at Amaroo is a semi-fine dining experience offering amazing food, delicious drinks, an unbeatable location and great customer service! It's the perfect location for your next date night, anniversary dinner, birthday, group booking, or just because!

You do not have to be a guest in our accommodation services to enjoy a dining experience with us!



CHRISTMAS
FUNCTIONS



AGE RESTRICTION: 10+ YEARS AT ALL TIMES

OPENING HOURS:

BREAKFAST 8AM-10AM
7 DAYS A WEEK

LUNCH 12PM-3PM
WEDNESDAY TO SUNDAY

DINNER 5PM-LATE
7 DAYS A WEEK




 @theloungeatamaroo
  @theloungeatamaroo

TO BOOK:

online: <https://thelounge.amaroretreat.com.au>

Phone 6244 4800 or email reservations@amaroretreat.com.au

1200 ALISON ST, MOUNT HELENA

Discover our digital edition online
www.echonepaper.com.au

Do you have Outstanding Tax Returns?
AVOID PENALTIES

COME AND MEET OUR FRIENDLY EXPERIENCED STAFF

BAS' · Personal Tax Returns
All Businesses · Partnerships
Trusts · Companies · Sole Traders
Super Funds

Your tax can be arranged via phone or email.
We are here to help!

Contactless Appointments Available

Tuesday nights and Saturday mornings available by appointment



9274 7511
RUSSELL MULLER PTY LTD

PUBLIC ACCOUNTANT

Reg. Tax Agent.

Principal: Pat Russell

Chartered Tax Agent & NTAA Member

Unit 3/51 Farrall Road (cnr Rothschild Place)
MIDVALE

Mobile: 0418 904 252

email: admin@prussell.com.au



MORGAN DE SMIDT

A POWERFUL image capturing streams of sunlight bursting through newly burnt bush has scored one Kalamunda fire the 2022 Resilient Australia Photography award.

Kalamunda Volunteer Bush Fire Brigade senior firefighter Andrew Haselden snapped the dynamic shot in autumn this year during a period of change for the brigade.

Mr Haselden said the image, titled *Autumn Burning – A Return to Normality*, stood out to him as an occasion which saw the unit reconnect after COVID.

“It was taken at the backend of a burn coming into winter this year and it was the first time the brigade came together after the COVID lockdowns this year,” he said.

“As a brigade we are a very social bunch and a lot of us really do

enjoy our interactions with each other and a lot of training and community engagement activities put more hours on the books than fires.

“With this year’s COVID lockdowns a lot of us lost that interaction that we are so used to.

“This photo jumped out at me as a return to business as usual and everyone catching up again and sharing those stories and training new members.”

Some may be surprised to learn that Mr Haselden’s photo, recognised through the people’s choice vote, was taken on his iPhone.

“I just happened to click a good shot and it met the criteria,” he added.

“It was one of those photos you take and think I’m quite happy with the result.”

While Mr Haselden takes photos on a casual basis, he said receiving

Kalamunda Volunteer Bush Fire Brigade senior firefighter Andrew Haselden received an award for his photo *Autumn Burning – A Return to Normality*.

the award was encouraging.

“I was somewhat overwhelmed by the other projects and it was quite humbling to be involved in this process.”

Men’s Shed a place to recover

CLAIRE OTTAVIANO

PROVIDING a place where bushfire impacted members of the community can come and recover together has won the Gidgeganup Men’s Shed a national award.

The community social group is one of four Western Australian initiatives recognised in the 2022 Resilient Australia Awards – receiving the community category award at a special ceremony last week.

Men Shed president Bruce Williams said the group was created out of community necessity in the aftermath of the February 2021 Wooroloo Bushfire.

“The core focus of the group is about mental health and we address mental health by inviting the locals and anyone interested to come and join in meaningful activities,” he said.

“About a third of our members are in the burn zone so there’s a lot of trauma, these guys lives are still massively disrupted and in a sensitive state.

“What we do hopefully is provide a bit of a distraction and meaningful interactions with others.”

Celebrating its first birthday in June, the shed now has a membership just shy of 70



Bruce Williams and the Men’s Shed team proudly accepted the award from Emergency Services Minister Stephen Dawson (far left) and DFES Commissioner Darren Klemm (far right).

with music activities, workshops, social days and much more running multiple times a week for both men and women.

But with the membership base steadily climbing, the shed is outgrowing its current temporary home at the Gidgeganup Showgrounds.

“There are currently three potential locations for our new shed, a block on Reen Road, Percy Cullen Oval and the Gidge Showgrounds and we’re progressing our discussions with the City of Swan on those three possible sites,” he said.

“The award has been very heartening and made us feel very proud we’re on the right track and that gives us a bit of

a kick along to get this new shed built.

“We talk about what we’re wanting to achieve but there is a hell of a lot of work to be at the scale where we can really make a difference.”

The Resilient Australia Awards are sponsored by the Federal Government in partnership with the States and Territories and are managed by the Australian Institute for Disaster Resilience.

The awards ceremony, held at the Gidgeganup Men’s Shed on Friday, October 21 also recognised a local art exhibition for its contributions to bushfire recovery.

The *Wooroloo Bushfire 2021 – 12 Months On* exhibition, a col-

laboration between the Shire of Mundaring, City of Swan, Red Cross and Department of Communities, received the Resilient Australia Local Government Award.

From 100 submissions, 52 images were selected to represent the 52 weeks of the community’s recovery journey.

Swan Mayor David Lucas said the City was proud to have collaborated closely with all involved.

“The City of Swan is still very much committed to the community’s recovery from the Wooroloo Bushfire, and are here to support ongoing efforts in recovery and resilience-building,” he said.



MIDVALE CENTRAL

OPENING November 2022

INCREDIBLE CAFÉ OPPORTUNITY



LAST REMAINING TENANCIES FROM 44 - 479 sqm

Retail, Allied Health, Medical, Office and more

- Final remaining leasing opportunities now available
- Join national anchor tenants including Woolworths, Terry White Chemmart, Chicken Treat, Atlas Fuel and a host of retail specialities
- Adjacent to rapidly growing residential catchments in Movida Estate and Orchard Private Estate
- Over 21,000 vehicles passing the site daily

Matt McSweeney 0402697263 Cristian Federico 0422735919 Anthony Morabito 0430101385

altegraproperty.com.au



Big Bash back with a bang

CLAIRE OTTAVIANO

RECORD crowds are expected at Lilac Hill for the return of the Women's Big Bash League (WBBL) next weekend.

The iconic cricket weekend event is back in 2022 with two free carnival days on November 5 and 6, with a special training session on November 4 giving fans a chance to get up close and personal with the Perth Scorchers and other state teams.

Midland Guildford Cricket Club life member and WBBL volunteer manager Dick Hutchinson said the tripartite event, run in conjunction between the club, City of Swan and the WA Cricket Association, was set to be bigger and better than ever.

"We've got the old wooden picket fence which we are ready to set up around the oval, it becomes a real village cricket atmosphere with the tents, the novelties and the food vans," he said.

"We've got five teams playing here over four matches, we would probably have 70 per cent of the Australian women test players playing cricket at the

Lilac Carnival."

Midland Guildford club star up-and-comers Shay Manolini and Kristin McLeod said the Lilac Hill-based club was home to some of the State's best women cricketers, including Perth Scorchers' players Alana King, Taneale Peschel, Chloe Piparo and Lilly Mills.

"It's honestly kind of crazy to think we have those types of players who play WBBL and some even play for Australia at our club," Kristin said.

"It doesn't feel real sometimes.

"It's really nice because we're all as one, even though there are multiple grades we all mix in at training."

Swan Valley local and Scorchers fast bowler Taneale Peschel said she was proud to bring premier cricket to her backyard.

"It's great being able to promote cricket in your local community," she said.

"I've been at Midland/Guildford for many of my senior cricket years so it's great to come home."

Now with two junior girls teams and two senior women's teams, club participation is growing exponentially.



Midland Guildford Cricket Club women's players Shay Manolini and Kristin McLeod and Perth Scorchers star Taneale Peschel are gearing up for a bumper weekend of cricket.

"We're slowly building the girls group down here which is really positive and hopefully they can endeavour to be where I am," Peschel said.

"I think the girls will thrive off being able to

watch high quality players [at the carnival] and know that they can one day step out there with us as well.

"Bring your friends and your dogs and your dog friends and your camping chair, there's

plenty of activities, food stalls and a waterslide, right here along the Swan River."

On November 5, the Melbourne Stars verse the Adelaide Strikers at 10am and at 1.25pm the Perth Scorchers play the

Sydney Sixers.

On November 6, the Perth Scorchers verse the Adelaide Strikers at 1.50pm and on Wednesday November 9, the Perth Scorchers will play Brisbane Heat at 12pm.

Spring still in bloom

VISITORS wanting to explore the Perth Hills this spring can find a variety of activities and attractions via the Experience Perth Hills website.

The Shire of Mundaring is one of five local governments that have joined an alliance to form the Perth Hills brand, a tourism initiative to promote Shires and Cities in the hills region.

Shire President James Martin said day trippers from across Perth and locals alike, can find all there is to do in the Perth Hills from Mundaring to Serpentine Jarrahdale via the website.

"Mundaring is a 40 minute drive from the CBD, and home to the famous Mundaring Weir, Lake Leschenaultia and WA's first national park, John Forrest National Park," he said.

"There's something for everyone - from great food places, markets, art, to glamping and enjoying the great outdoors. Jump online for inspiration for your scenic day out this spring."

Visit the Perth Hills Mundaring website <https://experienceperthhills.com.au/>

Bedshed | Midland | Open 7 days a week

20 TO 50% OFF EVERYTHING

Sale

Bedshed | Midland

40% OFF

SleepMaker™

RRP \$2,999
NOW \$1,799

Sleepmaker Lifestyle Sandstone Firm Queen Mattress

40% OFF

SleepMaker™

RRP \$4,199
NOW \$2,519

Sleepmaker Lifestyle Eastbrook Medium Queen Mattress

50% OFF

SleepMaker™

RRP \$6,399
NOW \$3,199

Sleepmaker Cocoon Solandra Medium Queen Mattress

50% OFF

SleepMaker™

RRP \$11,299
NOW \$5,649

Sleepmaker Cocoon Luxury Camelia Plush Queen Mattress



Love your new mattress or change it.

Terms and conditions apply. See website for details.

No one's better in the bedroom™

bedshed.com.au

Bedshed

MIDLAND

Midland Home, Cnr Clayton & Lloyd Sts

OPEN 7 DAYS

LAYBYS AVAILABLE



Phone 9274 4177

Savings are off recommended retail price (RRP). Some items may have been sold at some Bedshed stores at less than RRP as Bedshed encourages its stores to offer its products at competitive prices. Sale prices available from Friday 21/10/22 until Sunday 6/11/22 or while stocks last. Prices may be higher in country areas due to freight. Not all products available to order or on display in all stores. Mattresses and accessories are not included unless stated. Ensembles are pictured for illustration purposes only. Bedshed attempts to accurately represent furniture in their photography; however there may be colour variation to in-store product on occasion. Finance and lay-by available on selected sale stock. Ensembles are pictured for illustration purposes only.



Midland mattresses go to those in need

CLAIRE OTTAVIANO

HAVING a bed to sleep in at night is not a luxury says Midland Bedshed owner Don Bantock.

Mr Bantock teamed up with WA Senator Glenn Sterle to send hundreds of mattresses that would otherwise go to waste to those in need in the Kimberley.

The donated mattresses are near-new, having been returned to the store under the company's 60-day comfort guarantee.

While in pristine condition, once returned the mattresses cannot be resold and were instead gathering dust in the warehouse until Mr Bantock heard about

Senator Sterle's Waste to Wages program.

Waste to Wages volunteers collect second-hand furniture and deliver it to Revive in Kununurra where staff clean the items ready for sale locally.

"One person's rubbish is another person's treasure," Mr Sterle said.

"It's about three things, one the stuff is not going into landfill, two it is creating employment for people locally and two it provides cheap furniture for Aboriginal communities."

Mr Bantock joined the Waste to Wages crew in October to deliver mattresses to East Kimberly Aboriginal

development organisation the Wunan Foundation.

"I was talking to a lady there and she said they had women coming in with their kids, and their kids are sleeping on the floor," Mr Bantock said.

"Little ones, on the floor, no mattress, just on a hessian rug, and I think geez this isn't the Australia that I live in."

More Bedsheds have now joined the donation drive, significantly adding to the number of mattresses available for those in need.

"In 2022 we don't think this would be a luxury, sadly for a lot of families it is, we take it for granted," Mr Sterle said.



Midland Bedshed sales manager Bec Prosser and owner Don Bantock.

Councillors debate superannuation contributions

REBECCA PEPIATT

ONE Shire of Mundaring councillor said she was "floored" to find out that her remuneration package as an elected member did not include superannuation as the question about supporting compulsory super for all councillors

in WA arose this week.

The debate was raised by the Western Australian Local Government Association (WALGA) recently as they canvassed opinion as part of reforms to the Local Government Act.

Councillors were divided over the issue.

"When we choose to

become elected members, we do so knowing that we are doing it as a service to the community," Cr Ellery said, who put forward an alternative motion to not support compulsory super.

"If you want super, you can direct a portion of your pay to a super

fund.

"The community need to see us advocating for them."

Cr Ellery echoed sentiments from the gallery that the move would mean an increase in rates for the community but others felt that it would entice more people to put their hand up

for the role.

Cr Karen Beale said she was "floored" when she discovered she would not be receiving superannuation contributions as a councillor.

"This is a subject I am very passionate about," she said.

"I'm not one to spend the Shire's money flip-

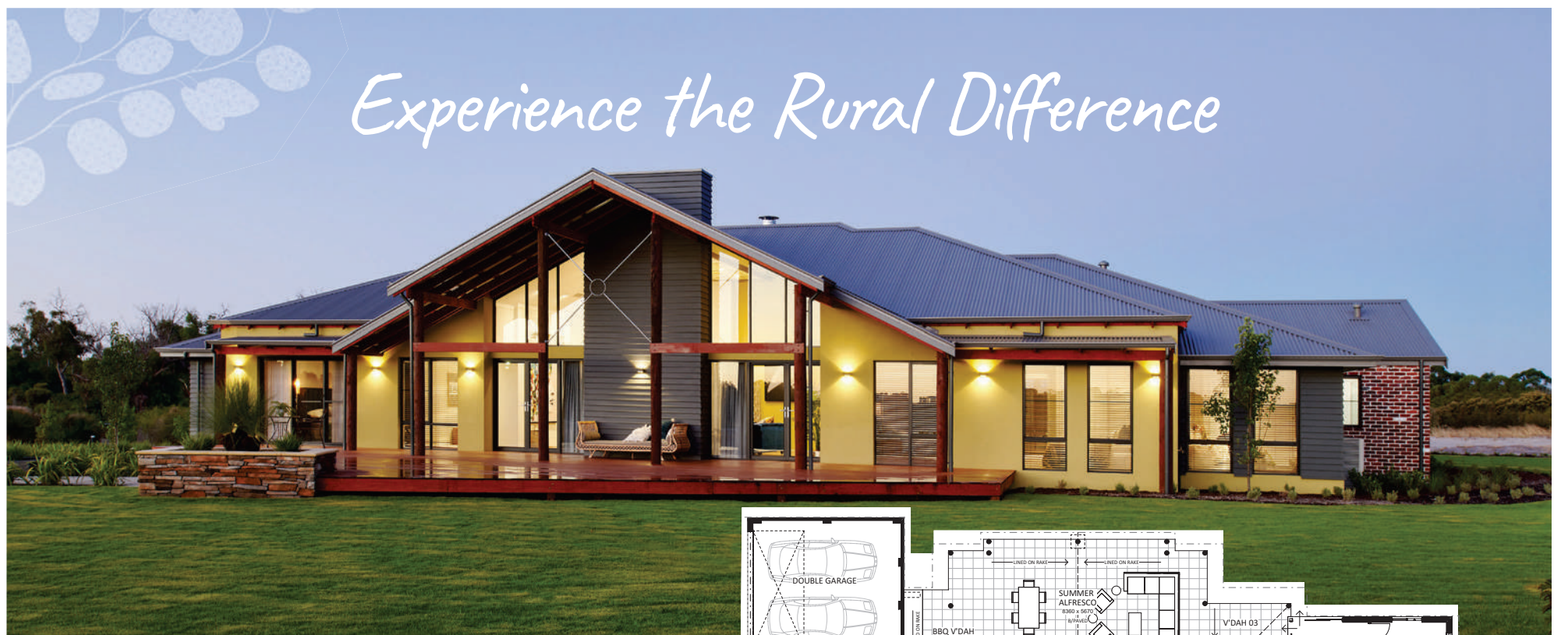
pantly, but if you want to attract good Shire members, you've got to be fair and equitable."

Councillors currently get paid almost \$23,000 a year, as well as travel and IT expenses, with the deputy president and president receiving an additional \$14,138 and \$56,554 per year

respectively.

Based on a percentage of 10.5 per cent, the Shire would need to contribute \$36,007 annually toward council members' superannuation funds (based on 12 council members).

Councillors ultimately voted to support this position 11/1.



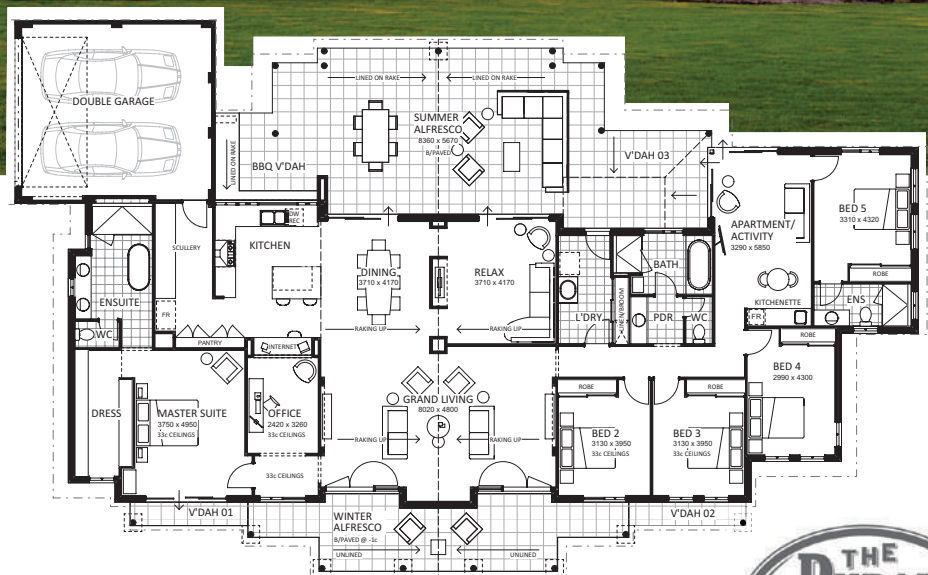
Experience the Rural Difference

The Hinterland Retreat

Soak up views forever from this 5-bedroom hideaway. It's everything you've ever wanted in a rural getaway, with rustic bush poles, soaring ceilings, a dual-sided fireplace, and spaces to relax, work and spend that all-important time with family and friends.

Pick your setting and let the timeless character and charm of this modern retreat sooth your senses.

For more information call 6141 6810 or visit ruralbuilding.com.au



VISIT ONE OF OUR DISPLAY HOMES

THE HINTERLAND RETREAT
48 Carriage Chase, Banjup

THE KALGUP RETREAT
40 Waterville Road, Dunsborough

THE JULIMAR RETREAT
7 Brookbank Drive, Bullsbrook



OFFICE LOCATIONS | Albany | Bridgetown | Bunbury | Busselton | Esperance | Geraldton | Perth

BC 11421

MEMBER OF THE JWHGROUP

Calling all wannabe skaters

REBECCA PEPIATT

IF you've been looking for a reason to get up from the sofa, here's something completely different to have a go at.

Roller derby, made famous in 70s America, is coming to Mundaring thanks to a group of ladies who have experienced the fun and want to bring it to the Perth Hills.

The Hillbilly Derby Crew will kick off in the new year but in the meantime, come-and-try sessions will be launching next month and these ladies reckon you'll be mad not to give it a try.

"It's the sport for people who don't like sport," Evi Dents, using her roller derby name, said.

"It's as much about the culture and the camaraderie as it is about the skating.

"It's about the group of people and the community around them."

Evi, who lives in the hills, got together with fellow ex-roller derby players and hills residents Indi Slammer Jones and Dewey Riot who decided to launch their own 'league' which will be training at the Mundaring Arena from the new year, before starting up some

competitions.

Now they're on the hunt for men and women from age 16 and over to lace up and join the Hillbilly team to get in on the action.

"There are state clashes but there's also a lot of home bouts and often we'll have bands and music and local craft people and we'll make a big deal out of just the two home teams playing together," Dewey Riot said.

"I call it chess on skates, so it does take a bit of strategy, but the basic idea is there is a jammer and four blockers and you have to push past the players.

"It's more hip and shoulder contact; it's not an all-out brawl.

"You're not getting punched in the head or anything."

The girls say it is a fantastic stress-buster and as much about fun and friendships as it is about winning and fitness.

"It cuts across society," Evi Dents said.

"It's somewhere that all walks of life can come together and it doesn't matter where you come from."

Learn to skate sessions kick off November 13, through to December 4.



Evi Dents, Dewey Riot and Indi Slammer Jones all use fake personas as part of the roller derby fun.

Councillors make pathway decision

MORGAN DE SMIDT

CITY of Kalamunda councillors agreed to follow a voluntary pathway as part of the local government reforms process this week, but not without pushback from one concerned resident.

Following the latest set of local government reforms announced by the State Government last month, City of Kalamunda councillor numbers must be cut from 12 to at least eight and councillors must decide to undertake a ward restructure or an involuntary pathway that would see their wards scrapped altogether.

City staff outlined several possibilities including a two-ward system, splitting council into a Hills Ward and a Foothills Ward, or an option to keep the current four ward system.

But, in a scathing deputation, Wattle Grove resident Bev Dornan said the options did not meet the preferences of electors.

"What is being proposed by officers appears to be a local government version of the old which leg do

you want broken conundrum that does not allow an answer of either," she said.

"Through this report, councillors are being urged to subject electors to a sham and costly community consultation process which does not allow electors to express a preference to either opt out of the ward system or, to determine the number of councillor representatives."

In response, chief executive Rhonda Hardy maintained the report was not seeking to promote any of the options and the community could provide feedback about the wards once the ward boundary review discussion paper was out.

"Just to clarify the report that has come before council tonight is a paper that outlines what can happen under a local government reform," Ms Hardy said.

"It's not saying that council has to follow any of these pathways and it certainly does have no ward options on two occasions, they are there for the community to consider."

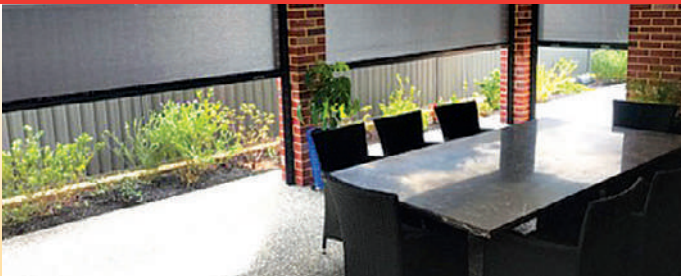
The discussion paper is expected to be finished next month.

Thank you for Supporting Australian Businesses

LOCALLY MANUFACTURED IN OUR MIDVALE FACTORY



AUSSIE OUTDOOR BLINDS



Aussie Outdoor Midland is a locally owned and operated business. We use structural grade AUSTRALIAN Aluminium to manufacture our blinds and the best quality materials available. This ensures you have a high quality product backed up with comprehensive warranties that will last many years. We have a range of blinds to suit your lifestyle and budget.

Our current offer is a FREE MOTOR UPGRADE (7 year replacement warranty) for all Interlock blinds plus a 35% Factory Direct Discount. Interlock blinds have a 50 knot (92km/hr) wind rating plus a 10 year warranty on the mesh. The mesh has a range of features to ensure longevity and a large colour range. You can match the mesh and frame to existing colours or the new range of colour bond mesh colours.

Alfresco Classic blinds can be made with mesh or pvc, clear or tint. A great solution for year round outdoor entertaining in comfort and style. Keep your outdoors clean and comfortable all year!

The show room at 1/6 Elmsfield Road, Midvale has an outdoor display as well as an indoor display.

Call 9274 0555 for an obligation free appraisal.



FREE MOTOR UPGRADE FOR INTERLOCK ZIPLESS BLINDS

SPECIAL RUNS TILL 31ST OCTOBER 2022. T&C'S APPLY.



THERMA WINDOW BLINDS



FREE MOTOR UPGRADE



Aussie Outdoor: Australia's largest Outdoor Blind Manufacturer!

SHOWROOM 1/6 Elmsfield Rd, Midvale 6056 • E: midland@aussieoutdoor.com.au
(08) 9274 0555 (08) 9249 1211 • www.aussieoutdoor.com.au

BIG SAVINGS



CHOCOLATE MILKSHAKE

\$2

One Choco Milkshake per member per day. Dine-in only.

KIDS MEALS

\$5



CHICKEN NUGGETS



BATTERED FISH



CHEESEBURGER

Maximum 4 kids meals per member per day. Dine-in only.



THE LOCAL SHACK FORRESTFIELD

19M, Forrestfield Marketplace, Strelitzia Ave Perth, WA 6058



Darling Range Sport College AFL specialists Darren Rumble and Brad Smith with West Coast Eagles premiership captain and coach John Worsfold (middle).

Hats off to hills teachers

MORGAN DE SMIDT

INSPIRING the next generation of football stars is far from work for two Darling Range Sports College teachers who help run the school's prestigious AFL program.

Coaches Brad Smith and Darren Rumble are being recognised this World Teachers' Day for their passion and commitment to enhancing the lives of their students.

With well over 300 WAFL games under their belts, coaching and teaching young

players has become second nature for the pair.

"I worked in AFL clubland for 17 years and it was work," Mr Smith said.

"Teaching students at Darling Range has renewed my passion for the game and being able to provide the AFL participants with good opportunities has been a satisfying experience."

Teaching runs in Mr Smith's family as his father was a teacher and his brother is a principal.

While he began his career in footy, he

found himself drawn to teaching and said playing a part in the high-performance AFL program at Darling Range is a great fit for him.

In a similar career change, Mr Rumble was inspired to explore teaching after retiring from football to take up coaching.

"Although teaching isn't totally the same as being a coach, a key similarity that drew me to teaching was the idea of influencing young people to be the best they can be," he said.

"Brad and I are in

a privileged position, given the opportunities we've been fortunate to experience in football.

"We try our best to pass on the teachings from these experiences from both a football and character-development perspective, from our first day in the roles, we've tried to promote a message and an awareness of being a valued member of the program and the school.

"Seeing the development in both areas has been extremely rewarding."

Bigger and better than ever

76TH Gidge SHOW
SATURDAY 29TH OCTOBER 2022

ONLINE TICKETS AVAILABLE FROM EVENTBRITE

Simply log in to www.eventbrite.com.au then scroll down to the bottom of the webpage and click on Perth events. Click on Gidgegannup Agricultural Show and purchase tickets.

EFTPOS facilities and tickets for cash will also be available at the gates on Show day.



Join us for a great Family Day out!

Saturday 29th October 2022
Gates Open at 9am

Showgrounds, Toodyay Road, Gidgegannup

Safety and environment take priority

MORGAN DE SMIDT

INCREASING community safety and protecting the local environment were the top issues raised by residents at a City of Swan consultation workshop this week.

Monday's workshop at the Swan Senior Citizens Centre was for those living and working in Swan View, Midvale, Stratton, Red Hill and Jane Brook to share specific matters affecting their neighbourhoods for the development of the Swan View Local Area Plan (LAP).

One Swan Districts Senior Citizens Association member, who asked not to be named, raised serious concerns for local crime and the measures in place to prevent re-offending.

"The amount of



unprovoked attacks against older people, it's a weekly occurrence if not a daily occurrence and a lot of it is repeat offenders," he said.

"The police do a good job, they catch them, but they go before the court of the magistrates, they get a slap on the wrist and they're out again.

"Surely there would

be a tougher stance taken so that they are given a lesson not to offend again... I don't know what council can do but there really needs to be something done about it."

The input from attendees' group discussions and survey answers were intended to guide the LAP over the next five years.

Strategic planner

Solomiia Kurochkina said increasing safety and crime prevention initiatives and protecting the natural landscape and bushland appeared to be the common trends among community survey feedback.

The Swan View LAP survey closes on November 7, to have your say visit swan.wa.gov.au/haveyoursay

And they're off and racing in Mt Helena

MOUNT Helena will come to life this weekend when the Hills Billy Cart festival takes off on Sunday, bringing old fashioned fun back to the hills once again.

The 2022 event will be entirely a production of Hills Billy Cart Inc. and includes such crowd favourites as the coconut shy, bean bag throw, dress ups, old cars, old clothes, plenty of food and drink options and lots of bands, dancing, market stalls and community groups.

This year the festival

is trialling a different approach to music with more school bands, dancing and singing with the change intended to provide an opportunity for aspiring new musicians to showcase their skills in a public forum.

On the Billy Cart front, the word is now getting out about the Hills Festival and in 2023 they will be running the Great Billy Cart Challenge in Perth CBD on April 16.

The event will run down Victoria Street to Riverside Drive with the

festival on at Langley Park afterward.

"It is shaping up to be a real biggie and hopefully will become an annual event in the city," John Bell, one of the organisers, said.

"There is also a possible billy cart challenge being considered for Bullsbrook a little later in the year."

The fun this weekend will take place around Pioneer Park, kicking off at 10am.

"For those who have been thinking about it, come along, admire this

year's batch of billy carts, return home and perhaps start discussing what fantastic creation might be built in time for April," Mr Bell said.

Rosie Thomas with her dad Mark and Shire of Mundaring councillor Neridah Zlatnik. Rosie has disabilities and took part in last year's billy cart race and will be racing this year with her dad in this Thomas the Tank Engine decorated cart.



Shire shake-up put to the public

REBECCA PEPIATT

THE community will soon be asked to give their opinion on how the Shire of Mundaring will navigate changes to its wards and councillor numbers as part of the Local Government Act reform.

At a special meeting on Monday evening, councillors met to discuss putting options out to the public as part of a six-week consultation period before the end of the year.

It comes after a decision made last month

by council to take the voluntary pathway and consider, themselves, the number of wards, boundaries, councillors and names of wards that will change as part of the State Government's major shake-up of councils across WA next year.

Options presented by Shire of Mundaring staff include everything from having no wards, to retaining the four current wards and reducing councillor numbers to anything from five to nine.

But some councillors

on Monday felt that overwhelming the community with too much information on how these changes would be implemented, would not be a good thing.

"It adds confusion to what the community is going to give feedback on," Cr Luke Ellery said, who also raised an alternate motion to give simple options to the community.

But ultimately councillors decided to go with the officer's recommendation to send out the Ward and Representation Review

discussion paper to the community.

"This is a complex process and our community are often provided with planning policies which are also complex documents," Cr Paige McNeil said.

"I think it's good for them to understand the complexities of what we're dealing with."

Submissions received during the consultation process will be considered by council in January 2023 to allow time for a formal submission to be made to the Advisory Board.

food
market

Under New Ownership

Fresh is Best

New Summer Hours

OPEN 7 DAYS A WEEK 8AM - 6PM

"SO MUCH MORE THAN JUST FRUIT & VEG"



Bananas
\$2.99
KG



Oranges
\$1.99
KG



Granny Smith & Pink Lady
\$2.99
KG



5kg Bagged Carrots
\$3.99
BAG
OR 3 BAGS FOR \$10

jane brook

Cnr Toodyay & Wilson Rds, Middle Swan
0481 567 877
0401 209 870

fresh



Find us on Facebook

Specials from Thursday 27/10/22 to Thursday 03/11/22

PIEMONTE
LAZIO TRENTO
ALTO ADIGE SICILIA
ABRUZZO VENEZIA
LIGURIA CAMPANIA
UMBRIA TOSCANA
MARCHE SEPT 1
OCT 5 20
HOLLAND RENFR

Kappy's
Italian

**Dine in bookings
and
takeaways**

6278 2882

**120 Swan St, Guildford
www.kappys.net**



Rail re-route rallies again

CLAIRE OTTAVIANO
A GROUP of Midland business heavyweights have thrown their support behind a proposal to realign the national freight rail line away from Bellevue's business and industrial precinct.

The Hammer Group sent letters to 1200 residents, 650 in Bellevue and the remaining to surrounding suburbs, claiming a change to the alignment would address significant traffic problems in Midland, specifically south of the current rail line.

"The traffic problems of Bellevue and Midland are linked to

the positioning of the existing railway line and the State Government's decision in 2018 favouring a route along Military Road," the letter said.

"There is a better alignment possible, and you deserve a better solution.

"Therefore, you should be supportive of a request of the City of Swan to undertake a review."

It is the second time a proposal to move the line to east of the Roe Highway has come before Swan Council in a little over three months.

The original councillor-led motion moved by Cr Charlie Zanino in July requested Transport Minister Rita Saffioti review the 2018-approved realignment to alleviate traffic problems in the Midland town centre.

The motion narrowly lost 6/7 with councillors citing concerns regarding impacts on the

developing Robinson Grove estate in Bellevue, the Helena River and bush forever sites.

The new motion tabled at this month's meeting is similar in nature in that it requests the review consider realigning the national rail freight route east of Roe Highway, however, with an additional clause that it does so without impacting Robinson Grove, existing housing and bush forever sites.

Dianne Arvino of the Bellevue residents and Ratepayers Association and Fiona Audcent-Ross of the Bushmead Conservation Cobbers both made deputations against the motion at this week's Council agenda forum.

"In the absence of consultation with the Shire of Mundaring and community groups, clear maps or further details we can only assume the latest promises on this mo-

tion to avoid impact on Bellevue residents, Robinson Grove and bush forever reserve in Bushmead cannot be promised," Ms Arvino said.

"The only clear alternative east of Roe Highway is along the Helena River floodplain, which would be unviable environmentally and otherwise."

Hammer Group representative Gavan Troy, who spoke in support of the motion, said numerous traffic reports confirmed Midland's dire congestion issues.

"The national rail route current alignment and proposed realignment, as per the 2018 Metropolitan Regional Scheme proposal, and the impacts of that on traffic flow standards are extremely critical for your area," he told councillors on Wednesday night.

"There are historic elements to Midland and the domination of rail

over all road considerations, but today there is no longer a justification for that domination of rail in Midland.

"Councillors, in particular those previously opposed... on what grounds can a simple request, that is without cost to the City of Swan, be denied?"

HammerWA was formed in 2018 by local business owners in opposition to then proposed - and now approved - plan to re-route the east-west freight rail line through Bellevue, Hazelmere and Midland.

While the majority of the members behind the group remain largely unknown, *Echo News* understands Alan Moody of Haulmore Trailers, Steve de Mol of the Demol Group, the Swan Chamber of Commerce and Cosimo Coniglio (the letter's signee) of Masters Projects are some of the major players.

**Your hotel room
on wheels**

Come and see us!

**PERTH 4WD SHOW
5th - 7th November**

www.mobinomad.com.au
PH: 0432 885 036

Report shines spotlight on residents' concerns

A SURVEY for residents in Ballajura and Beechboro found that climate change followed by physical health issues were the top two issues impacting residents.

The Assisting Communities through Direct Connection (ACDC) Project's 'people connectors' went door-to-door between May and August this year, connecting with 160 locals who completed a survey of their experiences with mental health and accessing support.

The mental health and wellbeing survey found that 40 per cent of all respondents surveyed wanted to seek help for their mental health in the last 12 months, however 60 per cent of those people did not get the care they needed.

The primary reason for not seeking help

was cost of services.

HelpingMinds line manager Danielle Moore said the project has highlighted with service providers the importance of connection with the local community and how providers share information to reach those who need it most.

"This project demonstrates once initial trust has been established at the door, people are generally willing to talk about their wellbeing," Ms Moore said.

"People connectors were able to offer both the anonymity and the confidentiality that gives people a safe space and opportunity to share things that they might not even disclose to family and friends."

The ACDC Project has been implemented in communities across all states and territories



HelpingMinds people connectors Rebecca O'Brien and Rebecca Ball spoke to and shared information on mental health and accessing support with residents in Ballajura and Beechboro.

in Australia to improve wellbeing and collect important data with the assistance of the Centre for Social Impact.

The final report of the ACDC Project, along with recommendations for how the sector can better meet the needs of communities, is scheduled to be released in the beginning of next year.

ARTS & ENTERTAINMENT

Local artist's remote focus

RUGGED, gritty West Australian landscapes have sparked the interest of local artist Georgina Moss for more than 50 years, her latest exhibition captures a gripping collection of works.

Ms Moss' exhibition *Remote Focus: A Retrospective and New Works By Georgina Moss* is on display at Bellevue Art Space from November 4 to 6, including paintings, drawings and sculptures.

Growing up in Northampton, much of her work reflects the harsh expanse of the country while her other paintings are records of places that invoked a response during travels throughout Australia.

"I've done most of my works in the Pilbara and the Kimberley, I do anything that captures my interest," she said.

"As the name of the exhibition suggests, it's something about the Australian landscape, its remoteness and endlessness of it



Artist Georgina Moss is displaying her collection of paintings, drawings and sculptures at Bellevue Art Space on November 4.

and the harsh quality of the West Australian landscape that appeals to me."

Ms Moss said she could never reproduce the quality of a quick sketch with a painting done in her studio, so she disciplined herself to be a plein air painter. This usually involved

going back to the same spot several times enduring heat, wind, insects and the discomfort of sitting on the ground.

"It is quite an arduous experience going back to the same spot at least one more time," she said.

However, she added

that memories of producing paintings in the actual environment created greater meaning for her.

Attend the opening of *Remote Focus: A Retrospective and New Works By Georgina Moss* at Bellevue Art Space on Friday November 4 at 6pm.

Darlington bonfire

THE hills community of Darlington will come together this Sunday for the annual community bonfire.

Organised this year by the Darlington Community Garden, the event marks the end of the burning season in the Shire of Mundaring and gives local people an opportunity to reflect on the risks of the bushfire season that lies ahead.

Community volunteers work in the weeks leading up to the community bonfire to clear local reserves and bushland of fallen branches, leaves and other fuel to

reduce the risks associated with the impending fire season.

The event provides an opportunity to see a safe bonfire conducted under the supervision of the Darlington Volunteer Bushfire Brigade and serves as a vivid reminder of the ferocious heat that is generated by burning fallen trees and debris.

This popular community event supported by the Shire of Mundaring attracts hundreds of local people who can also enjoy live music, market stalls and food vans. Prior to the lighting

of the fire around 6pm, there will also be a free coaching jam session in the afternoon sponsored by Helena College.

Scooters and skateboard riders can join coaches from Freestyle Now from 3pm at the adjacent Darlington Skate Park.

The Darlington Community Garden, Grand Arbor and Darlington Skate Park form part of the Darlington Lower Area Master Plan (LAMP) to enhance the space to the west of the Oval for the benefit of the community and the environment.

Music festival for all

A MUSIC festival in Kalamunda this weekend will see 17 live music events take place in a series of open mics, jazz guitar sessions and improvisation workshops.

The Live Music Spring Festival, organised by the Perth Hills Live Musician's Association, will embrace a diverse range of per-

formers of all ages and from all genres at the Kalamunda Agricultural Hall from today, October 28.

The Friday evening concert session will feature four local youth bands while the Saturday sessions will include a series of workshops together with live performances by a variety of local artists.

The Festival will conclude with a performance by the Drifting Shadows of music by the Shadows, who were major influencers of iconic guitarists such as Eric Clapton, Brian May, Mark Knopfler, Andy Summers, Ritchie Blackmore, David Gilmore, Andy Powell and Tony Iommi.



HILLSEAFOOD PROUDLY W.A. Family owned and Operated Since 1987. QUALITY YOU CAN TRUST.

LARGEST RANGE FRESHEST QUALITY | FRESH FISH SEAFOOD IN THE HILLS

☆☆☆

OPEN MONDAY TO FRIDAY

8AM TO 5.30PM AND SATURDAYS 8AM-2PM

☆☆☆

READY TO COOK MEAL OPTIONS AND RECIPE IDEAS INSTORE

☆☆☆

SA Plump Fresh **BLACK MUSSELS DAILY** \$8.95/kg
HURRY WHILE STOCKS LAST

NEW FRESH SMOKED + ARTISAN PRODUCTS DAILY
Smoked Whole Rainbow Trout
Premium Smoked Salmon
AUST Seafood Marinara
Wood Roasted Fish
WA Sardine fillets
Beetroot Cured Trout

Huon Fresh Atlantic Salmon Fillets Skin On **Premium Sashimi Grade**

We thank you for your loyal support and caring!

LARGEST RANGE | FRESHEST QUALITY | FRESH FISH SEAFOOD IN THE HILLS

PLUMP FRESH AUSTRALIAN 1/2 SHELL OYSTERS \$21.95/doz

NZ Flounder Whole Frozen \$12.95/kg

Huon Premium fresh Smoked Tasmanian Salmon Slides available 100g \$9.95, 200g \$12.95, 1Kg \$49.95/kg

NEW Season Whole WA King, Tiger and Endeavour prawn (Cooked & Raw) From \$24.80/kg
CARTON LOTS DISCOUNTS

WA Fresh Fish Unloading daily, such as:
• Broome Red Emperor
• Humpty Doo Barra
• Kalbarri Pink Snapper
• Exmouth King Snapper
• Kalbarri Spangled Emperor

Ready to go Salt & Pepper Squid \$23.95/kg

Nando's Pickled Marinated WA Octopus 250g \$22.80ea

Humpty Doo Barramundi medium Whole \$18.95/kg

NZ HOKIE FILLETS FROZEN 6.8KG CARTON \$13.95/kg
CARTON BUYS

NEW SEASON WA Cooked Crayfish PRICES DOWN!

Tender Southern Cleaned Squid Tubes \$19.95/kg

Sweet Premium Cooked Prawn Cutlets IQF were \$29.95/kg NOW \$26.95/kg

Fresh Juicy Exmouth Goldband Snapper Whole \$22.85/kg

LAST OF THE SEASON SHARKBAY FROZEN RAW KING PRAWN CUTLETS \$49.95/kg

Fresh Prime Yearling Grain and Grass Fed Beef Sirloin + Scotch Fillet. With Angus Brisket starting from \$16.95/kg

SNACK & COCKTAIL FOODS AND FRESH MEATS ALSO CATERED FOR. COME AND SEE OUR FACTORY DIRECT INSTORE SPECIALS

HILLSEAFOOD 4 Wandeara Crescent, Mundaring 08 9295 0066

Mention the Echo and add a further 10% off all labour on our services.

Computer Repairs & Upgrades

Virus Removal & PC Clean-up

Friendly Advice & Service
NO FIX, NO CHARGE



Custom Computers Built to Budget
(FROM HIGH END GAMING TO HOME AND OFFICE)

Laptop / Desktop Diagnostics & Repair

Laptop Screen Replacement

We are a family owned business that has been working out of our Midland store for over 10 years. Set price servicing.



REPAIR IT
COMPUTER SERVICES

Your local one stop computer shop!

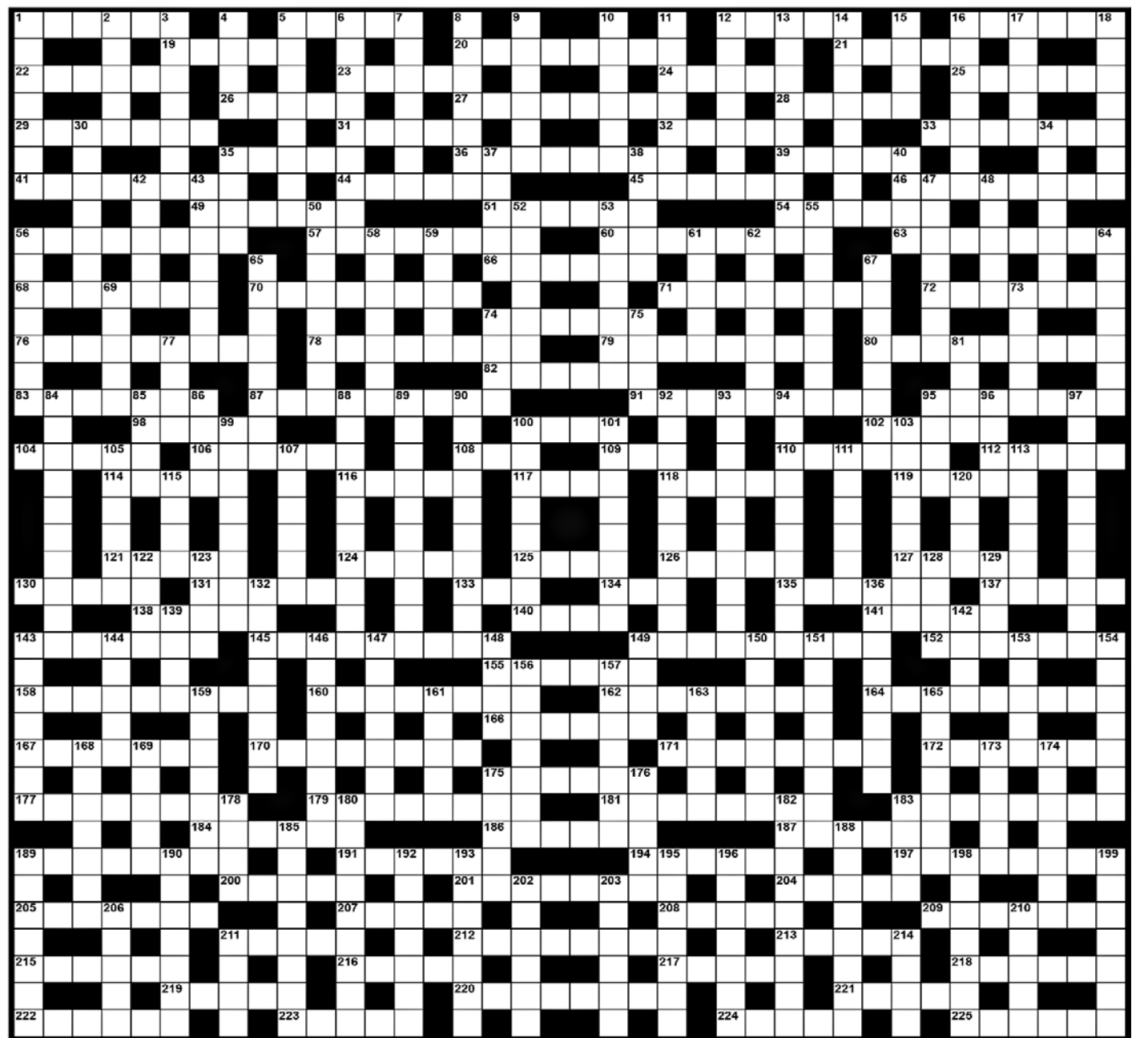
REPAIR IT
COMPUTER SERVICES

267 GREAT EASTERN HIGHWAY MIDLAND

Ph: 9250 4800

Email: service@repairit.net.au

ECHO Mind Boggler Crossword 1090



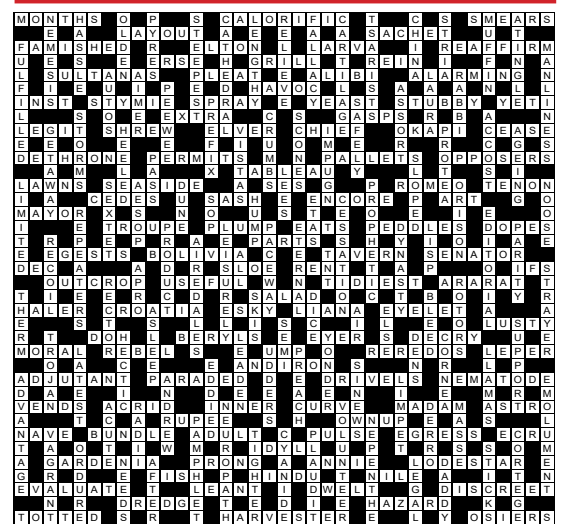
ACROSS

- 1 Hymn of patriotism
- 5 Strong wire rope
- 12 Drug takers
- 16 Distance runner
- 19 Of star element
- 20 Proof in court
- 21 Burnt bread
- 22 Silk measure
- 23 Singers
- 24 A doctor (coll)
- 25 Pressed clothes
- 26 Couches
- 27 Very slender line
- 28 English racecourse
- 29 Addition to will
- 31 Chinese animal
- 32 Of birth
- 33 Isaac's wife (Bib)
- 35 Bring
- 36 Travel document
- 39 Periods of time
- 41 Pipe from the roof
- 44 Glossy coating
- 45 A heist
- 46 A rice dish
- 49 Inverted thought
- 51 Bloodsucking African fly
- 54 Written theory
- 56 Plantation ground
- 57 Base for support
- 60 Australian state
- 63 Small frying pans
- 66 Speedsters
- 68 The best
- 70 Musical opening
- 71 Wears away
- 72 Electrical device
- 74 Lack of motion
- 76 Start growth of
- 78 Argue about
- 79 Small kitchen utensil
- 80 Ornate outfits
- 82 Counsel
- 83 Types of protein
- 87 Seed plant nutrition
- 91 Given confidence
- 95 Bootmaker
- 98 Private talk
- 100 Fly high
- 102 Irregularly notched
- 104 Arab chieftain
- 106 Washes out
- 108 Payable
- 109 Common newt
- 110 Small crown
- 112 A sharp ridge
- 114 Continental shops (coll)
- 116 Fragrant resin
- 117 Short
- 118 Equine animal
- 119 Worth
- 121 Middle East desert
- 124 Shock
- 125 Sandhill
- 126 Proverb
- 127 Area
- 130 Breathing organs
- 131 ... Mandela
- 133 Single
- 134 Printer's measure
- 135 Toughen metals
- 137 Usual action
- 138 Confuse
- 140 Mineral springs
- 141 Slant
- 143 Side tracks
- 145 Skill
- 149 Temporary
- 152 Sea creatures
- 155 Cry of triumph
- 158 Type of spider
- 160 Breathed
- 162 Forgiveness
- 164 Rib steak (Fr)
- 166 Hole for lightbulb
- 167 Comfortable
- 170 Teeth specialists
- 171 Slowmoving reptile
- 172 Being in play
- 175 Being superhuman
- 177 Musical work
- 179 Arbours of trellis work
- 181 Carefully planned
- 183 Types of cooks
- 184 Selfishness
- 186 Came out
- 187 Show clearly
- 189 Resting
- 191 Tobacco pipes
- 194 Lifted up
- 197 Ammunition stores
- 200 Reddish pigment
- 201 Parts of head
- 204 Electrical motor part
- 205 Vindicate
- 207 Shoulder movement
- 208 Level off wood
- 209 A proportion
- 211 Marketing
- 212 Cut off a member
- 213 Agitates
- 215 Loafers
- 216 Inserted part
- 217 Manages
- 218 A display in skies
- 219 Delight
- 220 Neatest
- 221 Local jargon
- 222 Selected top groups
- 223 Computer attachments
- 224 Posed again
- 225 Come forth
- 89 Widely separated (5,5)
- 90 Very foolish
- 92 Mercy killing
- 93 A writing desk
- 94 Lower down
- 95 Trance
- 96 One courting
- 97 A project undertaken
- 99 Make untidy
- 100 Hides away
- 101 People finishing workdays
- 103 Act of turning back
- 105 Walking very slowly
- 107 Types of mollusc
- 111 Behind
- 113 Part of Indian ocean (3,3)
- 115 Extensive
- 120 A girl's name
- 122 Biblical name
- 123 Completes
- 128 A plan
- 129 American singer
- 132 To sheltered side
- 136 Respected
- 139 Expression of annoyance
- 142 Cat's noise
- 143 Wavers in speech
- 144 Talk publicly
- 146 Root vegetables
- 147 More dangerous
- 148 Organs of vision
- 149 Encounter
- 150 Disbeliever
- 151 Can't be eaten
- 153 Unspoken
- 154 Wooden meat pins
- 156 Admire greatly
- 157 Hermit
- 159 Without burden
- 161 Introduction
- 163 Perch
- 165 Racing horse
- 168 Written works
- 169 Discovers
- 173 Remove hair
- 174 Par
- 175 Soft timber
- 176 A plotting group
- 178 Urges on
- 180 Ambassadors' offices
- 182 Speaks to
- 183 Top player
- 185 Forced forward
- 188 Most spruce
- 189 Celebrate
- 190 Soaks into
- 192 Bursts inwards
- 193 Boat racing carnival
- 195 Ways of viewing
- 196 More acute
- 198 That which leaks out
- 199 Position
- 202 Made amends
- 203 Very cheeky
- 206 Serve freely
- 210 Vilify
- 211 Small disagreement
- 214 Large stately bird

DOWN

- 1 Cited in argument
- 2 Caribbean nation
- 3 Type of mixed drink
- 4 Expected times of arrival (init)
- 5 Diced paper
- 6 Swear
- 7 European country
- 8 Give new form
- 9 Calls on
- 10 Blue dye
- 11 Relic
- 12 Displaying no time
- 13 Eucalyptus (pl)
- 14 Defensive enclosure
- 15 Endure
- 16 Regular wage
- 17 Love greatly
- 18 Spread out in circles
- 30 Nature's tear?
- 34 Funeral procession
- 35 Continual argument
- 37 Type of table
- 38 Flightless birds
- 40 Snow gear
- 42 Receiver of money
- 43 Recently rich person
- 47 Polar dwellers
- 48 Russian labour camp
- 50 Very good
- 52 On a slope
- 53 Narrow passages at sea
- 55 Setting substance
- 56 In celebratory time
- 58 Hates
- 59 Small branch
- 61 Tempers
- 62 Becomes thinner
- 64 A backer
- 65 Prophesied
- 67 Climbed higher
- 69 Attempt again
- 73 Very wealthy person
- 74 Material joint
- 75 Wise person
- 77 Golf mounds
- 81 Self-beliefs
- 84 A pen-name (Fr) (3,2,5)
- 85 Female horse
- 86 Sigrid (abb) (Scand)
- 88 Keeping in touch with

Crossword Solution 1089 from 21 October, 2022



Misty Ridge Plant Farm

16 Brown Road, Wundowie

Specialising in Australian Flowering & Climate Native Plants



WHOLESALE TO THE PUBLIC



HUGE SELECTION OF NATIVE VARIETIES AND SIZES, INCLUDING LARGE RANGE OF CLIMATE NATIVE PROTEAS.

LARGE RANGE OF DECIDUOUS TREES AND FRUIT TREES NOW AVAILABLE.

ALL PLANTS GROWN ON SITE WITH EXPERT ADVICE.

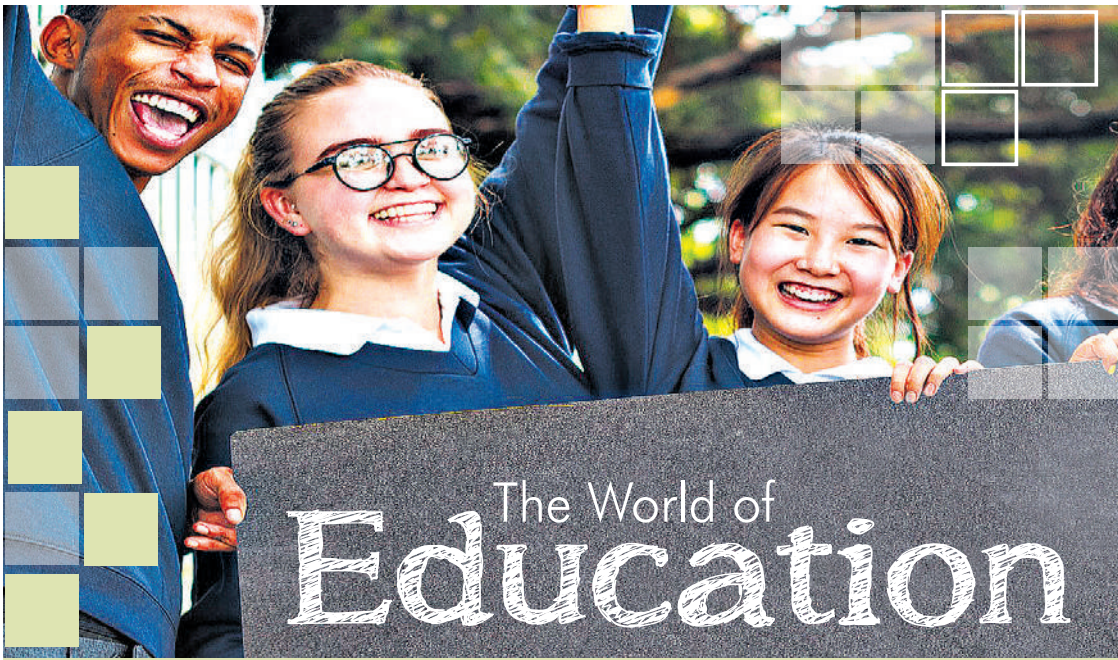
OPEN: MON - FRI - 9:30AM - 2:15PM
SAT, SUN, PUBLIC HOL - 8:30AM - 4:30PM



Find us on Facebook Ph: 08 9572 7145

Mob: 0427 387 686

www.mistyridgeplantfarm.com



The World of Education

INDEX OF ADVERTISERS

Lumen Christi	13	Helena College.....	15
St Anthony's	13	La Salle College.....	16
St Brigid's College.....	14	Kalamunda Mens Shed	16
Hawley's.....	14	Treetops Montessori	16
Edmund Rice College	15	Mazenod College.....	17
Jus Dance	15		

A wealth of opportunities at Lumen Christi College

Located in Perth's south-east foothills suburb of Martin, Lumen Christi College is a private, co-educational Catholic College catering for students in Years 7 to 12. Since opening in 1984, Lumen Christi College has established itself as a premier College of choice for local families.

The College's expansive campus houses a diverse range of facilities including a private dam, three ovals, four tennis courts, a Sports Centre, and a Performing Arts Centre.

There is also a purpose-designed Junior Transition Centre devoted to Year 7 students. A robust Transition Program supports our Year 7s to be independent and successful learners. Similarly, the Senior Transition Centre is another purpose-designed facility

where Senior students have direct access to Career Development, Vocational Training and a range of other specialist resources.

For its senior students, Lumen Christi College offers a comprehensive range of ATAR and Vocational

Education and Training course options, providing them with extensive opportunities to learn and develop within a safe, secure and inclusive learning environment.

Whether your child's interests are in the Arts, Sports, Academics or

other, Lumen Christi College can most certainly offer them a wealth of opportunities.

For enrolment enquiries please contact the College on 08 9394 9300 or visit lumen.wa.edu.au. Enrolments for 2024 entry are now open.



The Joy of Learning

Each student at St Anthony's is encouraged to grow as an innovative, collaborative and critical thinker through supportive relationships and engaging learning environments.

Each learner is constantly challenged to promote academic and social growth.

A growth mindset is fostered encouraging learners to view challenges and mistakes as a springboard for growth and an opportunity to enhance their abilities.

St Anthony's offers a well-rounded education which embraces the spiritual, intellectual, physical, social and emotional development of each child.

Differentiated learning is a strong focus

within the school. Enrichment programs from Years 1-6 and educational support in literacy and numeracy are provided.

Additionally, the school caters for a range of learning styles and provides a Social Sensory Programme.

The school has excellent teachers, facilities and resources, which enable us to offer interesting, inclusive and challenging programs.

The environment is a strong focus in the school.

Our extensive grounds lend themselves to a fully comprehensive program of physical education and sport.

ICT is an integral part of the curriculum.



A one-to-one iPad program has been implemented in the Years 4-6 classes. Laptops are available for classroom use in years 1-6. Two before-school Robo Clubs operate for over 45 students from Year 3 to 6. The school provides an After-school program from 6:30 am to 6 p.m. for children from 4 years up. A school holiday programme is also run through the year. The school, with the excellent support of the parish, strives to live up to its motto: 'Act justly, love tenderly and walk humbly'



Lumen Christi College



Enrol now for Year 7 2024

Enrolments for students commencing in 2024 are available. Limited enrolments remain for 2023 entry.

Please contact the Enrolments Officer to discuss admission on 08 9394 9300 or email enrolments@lumen.wa.edu.au.

College Tour - Saturday 29 October at 10am

Come and explore our campus! All are welcome. To book, please visit our website. Private tours are also available by appointment.

81 Station St, Martin 9394 9300 lumen.wa.edu.au

ST ANTHONY'S SCHOOL

A Great School Just Around The Corner!

Kindergarten Program 2023

St Anthony's School offers a 3-day Kindergarten Program. Each person at St Anthony's is encouraged to grow as an innovative, collaborative and critical thinker through supportive relationships and engaging learning environments.

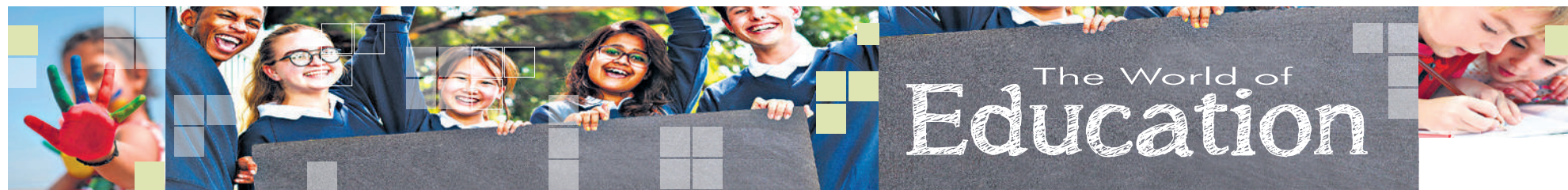


Learning spaces ignite curiosity, decision making, risk taking and creativity.

Enrolment Application forms are available to download on our school website www.stanthonysgreen.wa.edu.au or from the school office. **Interviews for Kindergarten places for 2023 are now taking place.**

If you have any further queries please do not hesitate to call the school on 9294 5500.

We look forward to receiving your applications.



Strong sense of belonging @ St Brigids College

St Brigid's College is a pre-K – 12 College situated in the picturesque hills of the darling scarp.

As a Catholic College we honour the gospel values and our rich Mercy heritage.

Your child's journey is nourished through the St Brigid's experience.

As your daughter embarks on her journey into Year 7, she will be warmly welcomed by our staff and students.

The first priority for our year 7 students on arrival is for them to establish a strong sense of belonging within our



community and to build new friendships that we hope will last well beyond the compulsory years of education.

We know that the change into secondary school is an exciting one, however change

can bring discomfort and our pastoral care team know what to do to support our girls through this phase of adolescence, as they engage in a range of new experiences, establish friendship networks

and adapt to the new learning environment.

Our College prides itself on high levels of learning for all students in every classroom every day.

The teachers of St Brigid's College have the skills and knowledge to enable your daughter to flourish in a Christ centred environment.

If you'd like to learn more about our Year 7 Programme, speak to our Community Relations Coordinator, or book a tour, communityrelations@stbrigids.wa.edu.au or call 9290 4205.

New Summer stock arriving daily @ Hawley's

With the Summer season approaching new stock is arriving daily.

Whether it be for school or sport, Hawley's Kalamunda carry a variety of styles and sizes for primary and secondary school students and right now we are offering 50% of discontinued school styles, limited

stock and 20% off our school shoes range during BTS 2023 from 2/12/2022 to 11/2/2023.

Put your child's best foot forward and be fitted by our professionally trained and super friendly staff who are here to help you find the shoe that not only fits and is

comfortable but looks good as well.

We cater for the whole family and their different tastes as well as having a wide range of fits and sizes.

Hawley's is also a keen supporter of several sporting and community groups as well as our local schools.

The support we in turn receive from the community is the reason Hawley's Kalamunda is still going strong after 71 years.

So even if you are not from Kalamunda, please pay a visit to our town and while you are here making sure you pop into Hawley's Kalamunda.

JOIN OUR DAY TOUR
18 November | 9 am | Meet at the College Reception

Join our monthly tour and speak to us to find out more about the Year 7 Programme. For more info or to book a tour, please contact communityrelations@stbrigids.wa.edu.au.

200 Lesmurdie Rd, Lesmurdie WA 6076 | www.sbcl.wa.edu.au | 9290 4200

Back to School 2023

New Year! New Shoes!

20% OFF During B.T.S. 2023

Clarks SFIDA BOBUX
Dr. AirWair Martens new balance SKECHERS

From 2/12/2022 to 11/2/2023

Need to see the year out? ON SALE NOW! 50% OFF DISCONTINUED STYLES – LIMITED STOCK

Hawley's
SHOES AND MENSWEAR
Serving the Kalamunda Community since 1947

Shop 8/10 Barberry Square Shopping Centre, Barber Street, KALAMUNDA
Phone 9293 1357 | Email: hawleyskalamunda@gmail.com



Dynamic Rural environment @ Edmund Rice

Edmund Rice College is a co-educational day and boarding school catering for Year 7 – 12 students.

The school is located north of Bindoon on a farm. Boarding students come from all areas around WA, while day students are bused from the areas of Toodyay/Northam, Bullsbrook, Gingin and Bindoon.

The College seeks to inspire each person to be optimistic, hopeful and resilient in a dynamic rural environment, so they become proactive, young people who will transform their communities.



Across Years 7 – 10, each year level is involved in a dynamic learning experience, facilitated by three experienced staff, co-teaching and providing learning experiences that are focussed on the

future in a diverse and stable environment that promotes a holistic education.

All students are engaged in agricultural studies and are actively involved in the farm enterprise of the Col-

lege.

The College specialises in Vocational Education Courses, for the senior students, with a high level of practical learning.

Enquiries to the College on 9576 5500.

Let's Dance AGAIN @ Jus Dance

Jus Dance are dusting off their dancing shoes and we invite all our regular clients and anybody who is interested to come dancing again with us.

Our new term will start on Monday, 7th November at our Maddington Studio

and Tuesday 8th November in Kalamunda.

Adult and Senior dance classes, day & evening include Ballroom, Latin, Salsa, Rock 'n Roll, Jive & Swing and New Vogue. Youth & Kids Ballroom & Latin

classes for children ages 5 – 17 yrs. Kid-Sport approved Club.

Whether you wish to improve your dancing, dance professionally or simply dance for fun, there is sure to be a dance class perfect for you at Jus' Dance.

Great music excellent Teachers, good fun. Pay for full 6 week Term & receive 20% off total cost for all NEW students.

Enrol online www.jusdance.com.au or Contact Jenny 0413430721.

The Power of Yet

For some children, confidence in themselves comes easily, and without much fuss. For others, self-confidence can take time to develop.

Encouraging a growth mindset is something that can simply be described as 'the power of yet'.

As an example, if a child says 'I can't read' or 'I can't do algebra', encourage them to add in the word yet –so, instead, the sentence becomes 'I can't read yet' or 'I can't do algebra yet'.

It is also about focusing on the pro-

cess, rather than finite 'good' or 'bad' outcome.

Giving praise is important, but so is getting young people to think about the way they approach tasks.

Giving children space to get things wrong is surprisingly helpful.

Not quite making it, when viewed through the power of yet, can spur them on to greater efforts, and giving it another go, and being resilient enough to keep trying.

Helena College firmly believes in encouraging a growth



mindset, and the power of yet.

From our Learning Framework, which combines project-based learning and big ideas with explicit teaching, through to the wide range of electives, students are giv-

en confidence to find their voice, and shine in their own way.

For more information, call (08) 9298 9100, email enrolments@helena.wa.edu.au or visit us online at www.helena.wa.edu.au

EDMUND RICE COLLEGE



Edmund Rice College is a co-educational day and residential College, for Year 7 – 12 students, situated in a healthy rural environment. Pastoral Care and Restorative Practices are central to our work at the College. This enables our strong community to achieve personal excellence together through our innovative co-teaching model. Students graduate from the College with a broad range of practical and industry related experience for future work and study.



Find out what opportunities await your child by contacting the College on 9576 5500 or visit the website at www.erc.wa.edu.au

NEW CLASSES STARTING SOON

ENROL NOW

0413 430 721 – JENNY

email: info@jusdance.com.au
www.jusdance.com.au

Learn to DANCE

- BALLROOM
- NEW VOGUE
- LATIN & SALSA
- JIVE & SWING
- ROCK N ROLL
- WEDDING DANCE
- PRIVATE LESSONS
- COMPETITION
- KIDS CLASSES

Check our Class Timetable: www.jusdance.com.au

Tuesdays 7-8.30pm

KALAMUNDA

St Barnabas Church Hall,
40 Railway Rd KALAMUNDA

\$10 ENTRY

afternoon TEA DANCE

EVERY FRIDAY 1-3.30PM

All welcome.
Includes Tea, Coffee, Milo, Biscuits & 45 min Sequence Instruction.

MADDINGTON

1984 Albany Hwy, Maddington
(enter off Burwash Place)

MEET NEW PEOPLE • GET FIT
LOTS OF LAUGHS • GOOD FOR THE SOUL

CREATIVE. CONFIDENT. ENGAGED.

Limited opportunities are now available for Year 4 and 5 in 2023.

APPLY TODAY

☎ (08) 9298 9100 ✉ enrolments@helena.wa.edu.au

🌐 www.helena.wa.edu.au

Kindy to Year 12 · Independent · Co-educational · Non-religious





KALAMUNDA MEN'S SHED

OPEN DAY

Saturday 5th November 2022

10am to 4pm

22 Falls Road, Lesmurdie

FREE ENTRY

WOOD & METAL MADE GOODS FOR SALE

- Wood & Metalwork demonstrations
- Kid's DIY activities, using tools to make their own projects
- Community organisations' stalls
- Musical Entertainment
- Sausage sizzle & drinks for sale

COFFEE & ICE CREAM VAN ON SITE

Come and see what we are about!



A united community @ La Salle College

A united community connected in values, in spirit and a common experience

La Salle College is an innovative Catholic co-education secondary school guided by our Lasallian principles.

The uniqueness of every individual is embraced at our College and our safe, inclusive and welcoming environment enables everyone to learn and flourish in their own distinctive way.

At La Salle College we offer a range of learning programs and academic pathways, as well as opportunities in a multitude of areas such as skill-based and work-based learning, music, arts, sport and extracurricular activities.



Our wonderful facilities and open outdoor areas provide an innovative and modern learning environment that inspires our students to explore their potential both within and beyond the classroom.

Our vision for learning is centred on trans-

forming tomorrow's hearts, minds and lives.

Through our faith, culture of excellence, values and systems, we equip our students with the tools they need to become life-long learners and positive contributors, voices and leaders in the community beyond their Col-

lege days.

A Lasallian school is more than just a curriculum, it's a united community connected in values, in spirit and a common experience.

To learn more about a La Salle College education visit our website at www.lasalle.wa.edu.au.

Enrol now for 2024 and 2025



A school of learning excellence guided by our Lasallian principles

www.lasalle.wa.edu.au

Preparing students for the modern world

At Treetops, we have the flexibility to give students many of the same kinds of academic options as much larger schools, but

delivered with all the individual care and attention that a small school has to offer.

The 'Treetops Difference' allows stu-

dents to thrive on academic challenges and prepares them to become enquiring independent citizens, ready for the modern world.

Treetops graduates are life-long learners with highly developed critical thinking skills, cognisant of their strengths and weaknesses, who use that awareness to identify areas of growth to reach their full potential.

They model respectful, pro-social, and principled behaviour to all individuals, as they value everyone's unique contribution to local and globally-diverse communities and their environments.

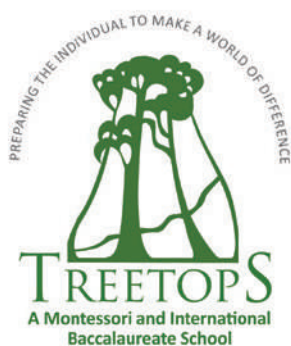
In Years 11 and 12, Treetops offers both the International Baccalaureate Diploma

Programme (IBDP), and the WACE General course. The IBDP has a reputation for focusing on holistic education, critical thinking, and global perspectives.

It is considered a more student-friendly alternative to the WACE ATAR programme, but with the same high academic outcomes for university entrance.

Our WACE General course caters for students who are wishing to go to TAFE, or move towards employment, at the completion of Year 12.

If you are considering your options for Senior Secondary, contact us on 9299 6725 to book a tour and learn about the Treetops Difference.



Enrolling Now for 2023/24

International Baccalaureate Diploma Programme and WACE General offered in Years 11 & 12

Places available in Years 10 - 12

Contact us today to book an individualised school tour



Ph: 9299 6725

office@treetops.wa.edu.au

www.treetops.wa.edu.au

12 Beenong Road, Darlington WA 6070





Free Entry @ Kalamunda Mens Shed Open Day

Situated at 22 Falls Road Lesmurdie (adjacent to the Lesmurdie Tennis Club), the Kalamunda Men's Shed commenced operation in 2009.

From small beginnings the Kalamunda Men's Shed has today grown to a membership base of over 170 members, providing effective service to the community and its members.

The Kalamunda Men's Shed is a non-profit Community effective facility that relies on grants and funding from Government organizations, local

business sponsors, donations and Pre-Christmas market stall etc.

The Kalamunda Men's Shed provides an environment where retired or non-working men can be creative in productive wood work and metal work projects.

Our members interact with one another, create mateship and in general assist in reducing social isolation, loneliness and other issues.

The members of the Kalamunda Men's Shed are inviting the community to visit and take part in our annual Open Day to see and evaluate



what the Men's Shed is all about.

Tour our facility, view products on sale, talk to our friendly members on the day, bring your children and grandchildren as there will be face painting, kid's wood work and other activities to provide entertainment.

Other community

groups will be participating on the day including the Kalamunda Youth Swing Band.

Available on site will be our delicious Sausage Sizzle, Ice Cream Van, Coffee Van and Drinks.

Free parking available in nearby streets and adjacent to the Lesmurdie Primary School (Burma Street)

EDUCATION TODAY

Don't miss our 2023 Education Features

2023 Publication Dates:

3rd March • 2nd June

1st September • 27th October



PH: 9374 6606

www.echonepaper.com.au



Building successful young men @ Mazenod College

SET in the picturesque Lesmurdie hills on 8.9 hectares overlooking Perth city, the Mazenod College campus is a tranquil environment of tall trees, open areas and purpose-built facilities designed for boys to flourish.

Mazenod College provides the perfect balance of educational, sporting, cultural,

spiritual, recreational and personal pursuits to support your son.

Mazenod College specialises in boys' education and its extensive range of learning opportunities inside the classroom is complemented by the many areas of learning extension sport, creative and performing arts and service in the co-curricular

program.

The recent addition of the centre for design and technology, provides a state-of-the-art facility to challenge and extend students skills in these areas.

Our new MyPath program is customised and personalised for Years 11 and 12, supporting their journey into University, TAFE, or into

the workforce.

Providing a well-rounded environment where each student is known, valued and supported to reach their personal best, lies at the heart of Mazenod.

Enrolments for 2024 are being accepted now, contact the college at registrar@mazenod.wa.edu.au or by calling 9291 1500.

2025

YEAR 7 INTAKE

Year 7 Parent Information Evening

Prospective Year 7 parents are warmly invited to attend an Information Evening at Mazenod College for the 2025 intake.

Mazenod College is located in the picturesque Lesmurdie hills overlooking the Perth city, the Mazenod College campus is a tranquil environment of tall trees, open areas and purpose-built facilities designed for boys to grow.



MAZENOD COLLEGE

DATE: Wednesday 9 November, 2022 **TIME:** 6.30pm with light refreshments from 7.30pm

LOCATION: School Gymnasium, Gladys Road, Lesmurdie

RSVP: IS ESSENTIAL - registrar@mazenod.wa.edu.au or 9291 1500

MAZENOD.WA.EDU.AU

STRATTON



Brisket Grilling Time!



Shop

LOCAL

& SAVE MORE Every DAY!

OPEN 7 DAYS - 7AM - 9PM

THURSDAY 27TH OCTOBER UNTIL TUESDAY 1ST NOVEMBER 2022



BEEF
BRISKET

\$12⁹⁹
kg



PORTERHOUSE
STEAK
BULK PACKS

\$19⁹⁹
kg



CRUMBED
BEEF STEAK

\$15⁹⁹
kg



IGA HALF OR
WHOLE LEG
HAM

\$7⁹⁹
kg



LAMB SIDE OR
QUARTER PACKS

\$9⁹⁹
kg



PORK
SHOULDER
CHOPS

\$9⁹⁹
kg



TWIN PACK
WHOLE CHICKENS

\$9⁹⁹
ea



CRUMBED
CHICKEN
BREAST

\$12⁹⁹
kg

STRATTON



TRADING HOURS: OPEN 7 DAYS 7AM-9PM

Specials available from 27/10/22 until 1/11/22 or while stocks last. Retail quantities only. No trade supplied. Pictures are for illustration purposes only. Savings are off regular prices. Some regular prices have been reduced to ensure you receive the lowest competitive price. Therefore savings shown may differ from savings shown in store.

LOCAL HASS AVOCADOS



Hot Price!

49^c
ea



BUNCH
BROCCOLI

69^c
ea



ROUND
TOMATOES

\$ 1⁹⁹
kg



ROCKMELONS
OR MANGOES

\$ 1⁹⁹
ea



BEETROOT

\$ 1⁹⁹
kg



MANDARINS
OR ORANGES

\$ 1⁹⁹
kg



CELERY OR
SPRING ONION
BUNCHES

\$ 1⁶⁹
ea



COS OR
ICEBERG
LETTUCE

99^c
ea



KALE OR
SILVERBEET
BUNCHES

99^c
ea

Stratton IGA - Stratton Park Shopping Centre
Farrall Road, Stratton WA 6056 | 6270 0797

Like us on  IGAStratton

Specials available from 27/10/22 until 1/11/22 or while stocks last. Retail quantities only. No trade supplied. Pictures are for illustration purposes only. Savings are off regular prices. Some regular prices have been reduced to ensure you receive the lowest competitive price. Therefore savings shown may differ from savings shown in store.

ECHO Trades & Services

9374 6666
 classifieds@echo-news.com
BOOK ONLINE: www.echonepaper.com.au

Air Conditioning

DISCOVER COMFORT AU47703 EC12108
 ALL AIR CONDITIONING TYPES SALES & INSTALLATIONS BREAKDOWNS & REPAIRS MAINTENANCE & SERVICES RESIDENTIAL & COMMERCIAL
FULLY QUALIFIED FULLY INSURED 20 YEARS INDUSTRY EXPERIENCE
 Contact Paul & Steph 0414257592 Paul@discovercomfort.com.au

Airconditioning & Refrigeration

ACR Local Company Local Prices Reliable & Efficient Pensioner Discounts
 Lic. No. AU05609
 For all your airconditioning & refrigeration service & installation
9454 9945

Asbestos Removal

HILLS ASBESTOS REMOVAL AND DEMOLITION
 free quotes
 Brian 0412 402 950
 LC#WARA34

Bobcats

MIDLAND BOBCAT HIRE BOBCATS, 8 & 12 TON TIPPERS, MINI EXCAVATORS
 Free no obligation quotes and advice
 Russell & Lynn Edwards Owner/Operator
 Russell: 0417 957 597 russlynn4@bigpond.com

bobcatplus.com.au
BOBCAT EXCAVATORS ROLLER COMPACTER
 Site works, Driveways, Rock Breaking, Excavations, Bush clearing, Laser leveling, Plus lots more.
 Call Eric on 0484 005 516

BOBCAT - TRUCK EXCAVATOR ROCKBREAKER
 • Bobcat works, Earthworks & Truck Hire
 • Driveways - Removals / Prep / Construct
 • Excavation / Trenches / Drainage / Soakwells
 • Shed & Tank Pads / Rockbreaking & more ...
 Reliable Service **DAVE 0417 096 614** DW Cartage & Earthworks

Brickpaving

BRICKPAVING
 - Big or Small Jobs
 - Repairs Retaining Walls
 - Quality Workmanship
 - All Work Guaranteed
 Ph Ian 0412 771 624

LINTON CONTRACTING SERVICES
PAVING - STONE WORKS
 ♦ All types of paving & stonework
 ♦ Repairs etc
 ♦ Pressure cleaning
 ♦ No job too small
 ♦ All work guaranteed
ROB 0400 128 951

Space for Sale

Builder

PRECISE BUILD
 Architectural Design and Drafting
 Specialising in Residential New Build Designs
 info@precisebuild.com.au 0439 262 091

Carpentry

CARPENTER/CABINET MAKER
 Sash Window Repairs / Renovations, Kitchens, Laundries, Robes & Vanities made and fitted. Doors, Frames & Architraves. Skirting & Shelving. 40 years experience.
NO JOB TOO SMALL. Call Terry 0401 743 027 / 9295 0797 telcocarpentry@bigpond.com

KAMELOT CONSTRUCTIONS
 Patios * Pergolas * Gazebos Decking * Carports * Fencing
 Quality carpentry at reasonable prices
 Phone Geoff 0409 110 686 www.kamelotconstructions.com.au

MORGAN CARPENTRY & MAINTENANCE SERVICES FREE QUOTE
 ALL ASPECTS OF CARPENTRY & MAINTENANCE WORK
 • 15yrs commercial & residential experience • Insured
 • Fully qualified, professional & reliable • No call out fee
 • Full police clearance • Pensioners discount
 Call Kevin 0450 538 596 www.morgancarpentry.com.au e:kidd.morgan@hotmail.com

Carpentry * Joinery * Cabinetmaking and Home Maintenance Services
 ♦ Doors ♦ Decks ♦ Skirting ♦ Sash Windows
 ♦ Robes ♦ Kitchens ♦ Flatpacks
 ♦ Pergolas ♦ Shelving ♦ etc.
 Pensioners Discount Fully Qualified Free Quote Call Mal 0400 250 761

Carpet Cleaning

SWAN JET CARPET CLEANING
 STEAM CLEAN • Carpets • Lounges • Ceramic Tiles • Grout Cleaning
 Minimum Charge \$60.00
FREE QUOTES - ALL AREAS PENSIONER DISCOUNT
 43 yrs experience. Work guaranteed.
 Phone Peter 9377 6241, 0419 942 508

Ceilings

CA INSTALLATIONS
 • Ceilings & Walls • All Facets of Ceiling Work
 • Domestic & Commercial • Office Partitioning
 All Reno Work Local and Loyal
0409 953 369

CEILING & WALL RESTORATION
 ALL SMALL JOBS ALL REPAIRS & NEW ADDITIONS
 23 YEARS EXPERIENCE
9295 2041 OR 0402 270 688

Concrete

B.C. CONCRETE DESIGN
 Cracked Pea Gravel/Exposed Aggregate Crossovers • Shed Floors • Drives House Extensions • Patios
 Bobcat & Truck
 Call Anytime **0457 611 348**

TIGER CONCRETE
 FREE QUOTES • NO MESS NO FUSS
 Quality work, all types of concreting
Bobcat and Truck Mike 0407 989 927

CONCRETE
 • Bobcat - Truck and Compaction
 • From Prep to Completion
FREE Quotes All Areas
 Call Zeljko 0417 902 301

Driveways

WA ASPHALT
 Red and Black Hotmix Gravel Mix
 Driveways, Crossovers, Repairs Potholes, Kerbing
 Established 25 years
0417 099 086

Driveways

ALLIED BITUMEN Free quotes Established 38 years All work guaranteed Fully insured
 Asphalt driveways - Crossovers - Carparks - Potholes Kerbing - Linemarking - Earthworks - Drainage - Trenches
0418 912 569 | 9454 4411 alliedbitumen.com.au

Electrical

Mrs Fixit! EC007258
 Female Electrical Contractor
 For all your domestic & commercial electrical needs
 TV / ANTENNAS • LIGHTS • POWER POINTS • SAFETY SWITCHES / RCD'S • SMOKE DETECTORS • WHITE GOODS REPAIR & MAINTENANCE • HOT WATER SYSTEMS
MARDI GLADWELL 0430 035 345

RUSHTON ELECTRICAL
 9291 4212 / 0408 904 169
 For all your electrical needs
 • RCD Fault finding / electrical repairs
 • Data • Phone
 • Air Con Install
 • No job too small
 EC 8468

Fencing

Julian Jones FENCING & GATES PTY LTD
 • Colorbond Fencing & Gates
 • All Slat, Pool & Security Fencing
 • Insurance Work & Removal
 • Automated Gates • Reliable Service
0408 288 622 #WARA1981

LINTON CONTRACTING SERVICES
FENCING
 ♦ All types of fencing
 ♦ Fencing repairs
 ♦ Old fences removed
 ♦ No job too small
 ♦ All work guaranteed
ROB 0400 128 951

Glass

Helena Valley and Hills Glazing
 "Intelligent Use of Glass"
 Shower Screens & Mirrors • Glass Repairs Double Glazing • Thermal/Acoustic Glass
 Call Sean or Maureen
 Tel 9299 6879 Mob 0427 474 252
 e: helenavalleyglass@bigpond.com
 www.helenavalleyglass.com.au / www.doubleglazingperth.com.au

Gutters

Hills Guttering Services
 Replace Gutters and Downpipes with Colorbond - Clean Gutters
 30 years experience
 Best prices - Free quotes
 Call James 0428 927 258 9291 6598

Handyman

♦ Pool Fencing ♦ Gutter Cleaning
 ♦ Furniture Repairs ♦ Painting ♦ Tiling & Paving
 ♦ Carpentry & Joinery ♦ Property Maintenance
 ♦ High Pressure Cleaning
 Almost anything - just ask!
 Pensioners Discount Free Quote
Mal 0400 250 761

Landscaping

SKL Garden Design
 • Garden Rock Walls
 • Re-cycled Brick Paving
 • Old Gardens Re-Vamped
 • Regular Garden Maintenance
 • Wet Hire Mini Kanga Digger
 Call Steve 0407 776 612

Lawnmowing

A Cut Above The Rest LAWN & GARDEN CARE
 ♦ Lawns Cut ♦ Clippings Removed
 ♦ Edges Trimmed ♦ Yards Cleaned
 ♦ Whippersnipping
 FREE QUOTES
9453 9404
 Mbl 041 791 3549

Limestone

AL'S LIMESTONE
 GOOD QUALITY RELIABLE WORK
 Retaining Walls | Screen Walls Steps | Paving | House Pads
 Call now for the contractor that will make a difference
ALLAN 0400 793 886

Michael's Stonework Servicing All areas
Limestone & Coffee Rock
 Small Retaining Walls, Steps, Pillars, Stone Pitching, Garden Beds
 For a FREE quote & reliable service call:
0427 190 273

Maintenance

PP Maintenance ABN: 86 642 331 437
PAUL 0477 660 703
 paul.percudani@outlook.com
 • Painting (Interior & Exterior)
 • General Repairs • Pressure Cleaning
 • Restoration Home or Office (pre sale or lease)

Painting

JIM OLSEN
 Painter & Decorator
 FREE QUOTES - QUALITY WORK
 Reg# 3749
0430 339 118

WA COMPANY PAINTING
 REPAIRS • INTERIOR • EXTERIOR
 CALL TREV 0414 289 145
 WWW.PERTHPAINTING.COM
 DISC. AVAILABLE PERTH PAINTING CONTRACTORS REG 6173

Pest Control

MA'S PEST & WEED SERVICES
 • Servicing the Hills and surround for 30 years
 • Specialising in termite treatments and inspections
 Free Quotes Sean: 0417 905 708

Space for Sale

Plastering

PLASTERING RENDERING SANDFINISH
 ALL SMALL JOBS • RENOVATIONS REPAIRS • NEW ADDITIONS
 23 YEARS EXPERIENCE
 Professional, Reliable & Friendly
 Ph Paul 9295 2041 or 0402 270 688
 www.rossrendering.com

EASTERN HILLS PLASTERING
 ABN 5445 1704397
 All Aspects of Plastering - Concrete Skim Coating - Acrylic Texture Finish - Renovations
30 YEARS EXPERIENCE FREE QUOTES
TONY 0406 675 211
 easternhillsplastering@outlook.com

Plumbing

LOCAL PLUMBER PL9956
 Same Day Service
 Blocked Drain, Taps, Toilets
 Burst Pipes, Hot Water
 *conditions apply
 Same Day Emergencies 24hrs
9468 2581
 NO CALL OUT* + SENIOR DISCOUNT
 Your Best Local Plumber!

Plumbing

Local Plumber Same Day Service
 Hot Water Expert
 - Upfront Prices
 - Pensioners Save
 - Drains, Taps, Toilets
 - Burst Pipes, Gas
Emergency Plumbing 24hrs
6118 6368
 PL9956 *conditions apply

The Tap Doctor

FOR ALL PLUMBING & GAS
 • Taps • Burst Pipes
 • Toilets • Leak Detection
 • Hot Water Systems • Blocked Drains
Call Today 1300 655 827

Hi I'm Local

In Your Area Hot Water Expert
 ✓ Senior Discounts
 ✓ Upfront Pricing
 ✓ Fast Plumber
 ✓ Drains, Taps, Toilets
\$0 Call Out*
Plumbing Emergencies 24/7
6244 3226
 *conditions apply PL9956

PLUM PLUMBING & GAS

PL8296 GF012882
 • Renovations and Extensions
 • Affordable hot water • Free Quotes
 • All maintenance • Drain Blockages
 • Professional Service • Fire roof sprinklers
Call Carl on 0411 325 059

Plumbing & Gas

PERTH LICENSED PLUMBING AND GAS
 PL8248 - 013029 **FREE QUOTES**
 • No call out fee • \$90+GST per hour
 T: 0427 574 545
 E: perthlicensedplumbers@gmail.com

Reticulation

Reticulation
0433 366 655

Reticulation and Landscaping
 • CABLE LOCATION SERVICE
 • DESIGN
 • INSTALLATION
 • MAINTENANCE
 36 years experience
 • PUMPS • SALES • SERVICE • MAINTENANCE
 email: paul@reticland.com.au
 Call Paul on 0412 900 145 or 9454 5762 or Aaron on 0429 515 222

ECHO Trades & Services

9374 6666

classifieds@echo-news.com

BOOK ONLINE: www.echonepaper.com.au

Roofing

ROOF TILE REPAIRS
For all your Roof Tile Repairs
Contact David for a free quote on
0413 240 203 or 9255 4003
Specialising in: Leak Repairs • Gutter Clean
• Tiling • Re-riding • Re-pointing

Roofing

AMC ROOFING
Specialising in
All Tiled Roofing
New Roofs
Maintenance & Repairs
Free Quotes - Aaron Carter
Mob: 0417 930 817

Tiling

LAYRIGHT
TILING
Professional local service
with 25+ years experience.
Floors & Walls, Indoor & Outdoor,
Full Bathroom Renovations & more ...
Scott Hermansen 0405 445 101
layrighttiling@gmail.com

Tree Services

HILLS TREE SOLUTIONS
For all your Treeclipping and
Stumpgrinding Needs
• Locally owned & operated • Call 24/7
• Fully Insured • Cheapest Prices Guaranteed
• Horizon Power Accredited • Servicing All Areas
CALL 9295 6511
OR 0414 438 610

Tree Services

TLC Tree Services has merged with
Payne's Tree Services
FREE QUOTES AND ADVICE
• MULCHING • LAND CLEARING
• STUMP GRINDING
• TREE LOPPING
Call Clint on **0455 132 014**
paynestreeservices.com.au

AR Specialist Roofing
Solutions for all your roofing needs
including roof restoration, gutters, leaks,
downpipes, sheeting, custom flashings,
gutter cleaning, carpentry, house painting
PATIO BUILDING
Call Andrew
0410 669 184
arspecialistroofing@gmail.com

**To register ONLINE for
your Trades & Services
advertising... GO TO:
www.echonepaper.com.au**

AVG TILING
Kitchens | Bathrooms | Floors
Free Quotes
Always professional and reliable
Call Tony
0417 956 936

**ASK ABOUT OUR
GREAT PRICES
FOR TRADES**

ECHO Classifieds

9374 6666

classifieds@echo-news.com

BOOK ONLINE: www.echonepaper.com.au

Custom Video & DVD Solutions

HOME MOVIES converted to DVD or USB starting from \$27.50. Phone Ben for all transferring needs 6393 7298 or 0478 935 855.

Electrician

LITL Electrical.
All types of electrical work.
Jeff Overton 0483 858 603.



Handyman

WILLIS BUILDING & MAINTENANCE SERVICE
Specialising in all house maintenance, pergolas, decking, verandas, paointing and carpentry. 0487 093 355.

M & H MAINTENANCE
All indoor & outdoor work
0497 110 951.

Hobbyfarm Services

Slashing, mowing, wool buying, firebreaks & fencing. Ian 0458 510 048.

Lawn Mowing

Tony's Lawnmowing, Handyman & Firewood.
Cheap rates. Midland & Surrounding Areas. 0431 831 948.

Painting

FOR A PROFESSIONAL JOB for a reasonable price, phone Andrew 0413 158 763.

Local painter Paul. 0477 660 703 Free quote.

Pets

CAT AND POSSUM TRAP for hire. H/Wycombe Hardware. Ph 9454 5374.



Plumbing

MASTERS PLUMBINGAS
All Plumbing & Gas work, Blockages, Hot water units, Leaks, Renovations, Burst pipes. 24/7 Emergency Service. NO CALL OUT FEE David: 0416 644 191. PL-9554 GF-011284.



Solar Services

Solar Panel Cleaning with Anti Mould & Solar Wax Treatment. 0421 455 546.



Wanted

Records, LP's or 45s collections + turntables + cassettes. 0424 489 910. Guildford.

Public Notices

Ward and Representation Review 2022

Residents are invited to evaluate the current arrangements and to consider alternative options to find the system of representation that is most appropriate and best suits the characteristics of the Shire and its residents.

The Ward and Representation Review 2022 Discussion Paper outlines the current situation, the review process and examples of possible options for change.

Further information, the Discussion Paper and the Feedback Form is available on:

- Engage Mundaring (www.engage.mundaring.wa.gov.au/ward-and-representation-review-2022)
- The News section of the Shire's website.
- From Customer Service at 7000 Great Eastern Highway, Mundaring.

Public submissions close: 4.30pm Monday 19 December 2022

Following the close of the consultation period, a report will be presented to Council in January 2023 to enable consideration of all submissions received and to make a determination on wards and council member representation levels.

Jonathan Throssell
CHIEF EXECUTIVE OFFICER



Public Notices

CITY OF SWAN REQUEST FOR TEMPORARY ROAD CLOSURE OF A PORTION OF BROOKLANDS DRIVE, HENLEY BROOK

Notice is hereby given in accordance with section 3.50 of the Local Government Act 1995 of a proposal to temporarily close a portion of Brooklands Drive between Diane Place and Henley Street, to vehicular traffic.

The closure of Brooklands Drive is requested to undertake major works including sewer installation, stormwater pipe installation, utility service installations and new road pavement.

The proposed temporary closure is for a period of six months, commencing on 9/01/2023, with completion expected by Friday, 30 June 2023.

A plan showing the closure locations can be inspected online at www.swan.wa.gov.au; at the City's Administration Centre, Morrison Road, Midland; or at any of the City's libraries, during office hours.

Prior to Council considering this matter, submissions from the public are sought. Anyone wishing to object, support or otherwise comment on the proposal may do so by lodging a written submission, addressed to the undersigned, City of Swan, PO Box 196, Midland, 6936, on or before Friday, 18 November 2022.

Cliff Frewing
A/CHIEF EXECUTIVE OFFICER

www.swan.wa.gov.au



Employment

ECHO Newspaper

RECEPTIONIST/DESKTOP PUBLISHER

Monday - Thursday 9am-3pm

Would you like to work part time within a family type small office environment, greeting incoming callers and visitors to the office on a daily basis of a locally owned, operated and proudly independent weekly newspaper?

The Echo Newspaper - Midland is seeking a Receptionist/Desktop Publisher with additional administration/clerical skills to take over the reception and trades.

In addition to reception and admin duties there will be the opportunity for newspaper layout and design. In design and photoshop experience is preferable but not essential as full training provided.

The successful applicant would require the following:

- A proven track record in customer service/sales with an excellent telephone manner and strong written and verbal communication skills.
- Sound computer literacy, plus a competent typist with a knowledge of the MYOB and Microsoft systems preferable.
- Ability to work to strict weekly newspaper deadlines.
- Be an enthusiastic team player with a self starter attitude, organised and able to prioritise.
- Free staff parking available.

This is a challenging career opportunity for someone who can work closely with managers and staff to achieve both individual and team goals.

This position will be based within the Midland Professional Centre located on the ground floor at Suite 4, 9 The Avenue, Midland WA

e-mail your CV to jocelyn.longley@echo-news.com

Firewood Services

MOBILE LOG SPLITTING
0435 931 570 / 0412 145 384.

Garage Sale

Mundaring Men's Shed
Garage Sale. Sat 29 October 9am-12noon. 3205 Jacoby St, Mundaring.



Gardening

Straw. Huge 2.4 x 1.2 x 900
Water saving garden mulch \$70 pick up. Delivery extra 0417 991 302.

Ian Mac's whipper snipping, chain sawing and weeding. Small tree lopping jobs. 0426 211 137.

Gift Hampers



Carmel Gift Hampers
0459 999 586
carmelgift Hampers.com.au

Gutter Cleaning

Gutter cleaning & solar panel cleaning. Jason 0421 455 546.

Do you have something to Celebrate?
Why not announce it in the Echo? Call 9374 6666 to share your special news.

ECHO NEWS

Indemnity and Warranty

ECHO NEWSPAPER CONDITIONS OF ACCEPTANCE

When an individual or other legal entity ("the Customer") requests Echo Newspaper ("Echo") to place an advertisement in this Newspaper, they agree to be bound by the following terms and conditions:

1. Echo, at its sole discretion, may decline to publish any advertisement requested by a Customer. If Echo decides not to publish a particular advertisement, there is no obligation on Echo to disclose the reasons for its decision, and Echo will not be liable for any loss or damage occasioned to the Customer as a result of the decision.
2. Echo will not be liable for any loss or damage caused to a Customer as a result of delay or as a result of Echo failing to place a requested advertisement or publishing an advertisement containing an error or omission.
3. Echo may, at its sole discretion, decide to refund a Customer a portion of the cost of the advertisement if it forms the view that the error was not attributable to the Customer and the Customer notifies Echo of the error or omission before 5.00pm on the day the advertisement first appears in the Newspaper.
4. Complaints concerning the accuracy of any invoice must be notified to Echo within 30 days from the end of the month in which the advertisement was published, after which time the Customer forfeits any rights it may have had to challenge the invoices.
5. The Customer warrants that publication of the requested advertisement/s will not contravene any laws, whether statutory, equitable or otherwise, and agrees to wholly indemnify Echo (and its employees and agents) against all expenses, loss and damage arising directly or indirectly from the publication of the advertisement/s.

Read between the lines

by Ken Duffy

His name was Thomas, we would probably call him Tom. He wasn't with a group of his mates, a couple of thousand years ago, when they told him they had all the doors barred in this room. Next thing "hey presto" this guy just appears out of nowhere, pulls back His robes and shows them where crude nails had nailed Him to a cross and a spear thrust in His side, to make sure He was dead. They were blown away, it was Jesus who they had been following and they were sure He'd been crucified by the Authorities and He was buried in a tomb deeper than a doornail. "That's all right for you guys to believe in 'fairy-tales' but I'm a realist. I won't be conned, I'll only believe what I see with my own eyes and touch with my own hands, so there!" Would you believe, "hey presto" it all happens again. (Read it in the Bible, if you've got one?) "Peace be with you!"

Then Jesus said to Thomas, "Put your finger here; see My hands. Reach out your hand and put it into My side. Stop doubting and believe."

Thomas said to him, "My Lord and my God!" Then Jesus told him, "Because you have seen Me, you have believed; blessed are those who have not seen and yet have believed." Stacks of people saw the risen Jesus! Any wonder a guy called John wrote later: "We only proclaim to you what we have seen and heard and even touched." (1 John 1:1-5)

Check it out, unless you're one of the 'Toms' of this world and you only want to see for yourself?



World Transplant Games countdown



LESMURDIE'S Colleen Ashby (pictured) was one of a handful of organ transplant recipients to climb to the top of the Optus Stadium last week to mark the six-month countdown to the World Transplant Games, being held in Perth for the first time next April.

The Stadium will host the opening ceremony, with more than 2000 participants aged from four to 80 expected to come from around the world to celebrate the second chance at life they have received through organ transplantation.

Ms Ashby lost her sight following a life-saving heart transplant in 2015.

Six months after the operation, she found out about the Australian Transplant Games and set herself a goal to compete in swimming.

Despite an interrupted training schedule due to pool closures during the COVID-19 pandemic, and two shoulder replacements, Colleen is now one of hundreds of Australian athletes

in training for the Perth World Transplant Games.

"For me it's not about winning, it's about getting to know other people in the same situation as me and showing people that we can still live life and make the best out of the gift of life we've been given, trying things we have never done before," she said.

Deputy Premier and Tourism Minister Roger Cook said the WA Government was proud to be bringing the event to Perth next year, and to showcase our beautiful city on a global stage, to the World Transplant Games community.

"This event will provide an incredible platform for these extraordinary athletes to come together and inspire all Australians, and remind us of the importance of organ donation and embracing physical fitness at all stages of life," Mr Cook said.

"The 2023 World Transplant Games will drive thousands of out-of-state visitors to WA, inject mil-

ions into the local economy and most importantly, further elevate WA on a global stage as a world-class host of major sporting and cultural events of all kinds."

The transplant recipients were joined by World Transplant Games Federation President and Chief Executive Officer, Transplant Australia, Chris Thomas.

Mr Thomas said he believed the World Transplant Games to be the world's most inspirational sporting event.

"The Games promote the greatest gift of all – the gift of life – and is an opportunity to thank the donors who make transplantation possible, and encourage transplant recipients to embrace an active, healthy lifestyle post-transplant," Mr Thomas said.

The call for volunteers for the Games has also opened, with hundreds required in a variety of roles from administration, health care, interpreters, registration and transport.

Weather hampers cricket

ALBY PAGE

THE Swan Valley Cricket Club (SVCC) First Grade match was delayed on Saturday, due to a wet pitch at the Balcatta Cricket Club (BCC).

Clubs across the WASTCA have had significant challenges getting the pitches ready this season due to weather conditions and lack of direct sun.

Curators, including our own Life Member, Murray Spackman, have had one of the most challenging seasons to date, and it appeared that the BCC

were another victim of mother nature.

The game was significantly delayed, and will be continued this Saturday with a maximum of 62 overs per team.

The Valley won the toss and elected to bat, with Keegan De Koker (6) and Budden Sidhu (19) falling victim of the pitch conditions.

At gritty 25 from 98 from coach, Joe Lavender, helped steady the ship, whilst Phil Adams (53) and Shafraz Jaleel (16) will continue batting next Saturday.

We currently sit 5/145 from 47 overs.



Hockey carnival fun

OVER 160 Year 5 student from five primary schools across the Kalamunda region took part in an annual hockey carnival last week.

Hosted by Kalamunda Districts Hockey Club, the annual Kalahockey Year 5 Junior Hockey Carnival was a day of fun, fitness and friendly competition.

Held at the Kalahockey clubrooms and playing fields at Hartfield Park in Forrestfield, this unique event was the idea of Richard Guthrie, Kalahockey Junior Development Officer, following a community engagement program in-

itiated seven years ago.

"We initially offered 12 government primary schools in the City of Kalamunda a free whole day hockey clinic during Term 1 and 4 of each year, to support the introduction of hockey to the school health and physical education program," Mr Guthrie said.

"This was provided through volunteers and with the support of Hockey WA and the City of Kalamunda.

"This evolved into a carnival concept that focussed on providing an opportunity for students to use the hockey skills they learned at the

clinics in a competitive situation."

The event was driven by over 30 volunteers, many many who took days off to donate their time to the local community.

"[The carnival] continues to be a highlight on our school's calendar and words can't express how appreciative we are of the countless hours that go in to preparing the carnival," Maida Vale PS HPE Teacher, Craig Stein said.

"We look forward to continued support of the event by the schools and Kalahockey volunteers," Mr Guthrie said.

ECHO Notice Board

A free service for non-profit organisations

9374 6666

classifieds@echo-news.com

Upcoming events

- **Kalamunda Arts Group's** Annual Arts and Crafts Exhibition will be held at St Barnabas' Church Hall, Central Kalamunda, on Saturday, November 5 and Sunday, November 6, from 10am to 4pm. Raffle prizes available and entry is free. For more information call 0414 148 982 or 0439 943 400.
- **Cycling Without Age** is giving free Trishaw

rides from Woodbridge Riverside Park next Sunday, November 6, to celebrate senior's week. For anyone who is unable to ride for themselves but would love to feel the wind in their hair while being escorted on a Trishaw along the gorgeous Swan River. For more information call 0448 447 223.

- **World Vision Hills Branch's** major November event runs for two days at St Cuthberts in Darlington on the same weekend as the Darlington Arts Festival,

November 5 to 6. Well priced items, morning and all-day tea, coffee and treats for sale.

- **Hovea Residents and Ratepayers Association's** general meeting will be held on November 2 starting at 7.30pm at the Parkerville Oval Sports Pavilion. Call Max on 9295 4557.
- **Kalamunda Youth Swing Band** gives young musicians the opportunity to rehearse and play in a band. Rehearsals are Monday afternoon during school term. For more informa-

tion call musical director Leah on 0432 973 395.

- **Midland Friendly Garden Club** meets in the Bruce Douglas Pavilion, Brown Park, Swan View next Thursday, November 3, at 9.30am. Our Guest speaker is Erica Stean who will talk about Herbs. For more information call Laurel on 9279 2858.
- **Woodbridge Ratepayers Association's** AGM is this Sunday, October 30, 4pm to 6pm at the Hazelmere Hall. Issues to be discussed include, Morrison Road

upgrade and level crossing, Woodbridge Primary School future, Amherst Road upgrade, Great Eastern Highway dual carriageway, social housing and support and community wellbeing. For more information email wra6056@iinet.net.au or call Lynn on 0417 188 626.

Noticeboard is for non-profits and community groups advertising free/low cost events/programs. Entries must be emailed to classifieds@echo-news.com two weeks before the event.

Woofers of the week



Can you resist this beautiful blue eyed puppy? Meet Buck, a 13-week-old Kelpie whose owner can't keep due to a change in personal circumstances. This little boy is very loving and well behaved. Buck is microchipped and vaccinated, but due to his young age hasn't been sterilised yet. Please contact Bakers Hill Dog Sanctuary on 9574 1438. Costs apply.

ECHO Local REAL ESTATE



First home buyer's delight

THIS home is not big but has exceptional eye appeal and is an excellent starting point for first home buyers or a family keen to down-size.

With fully tiled flooring, this three-bedroom home features a renovated kitchen with generous storage space leading into a comfortable and cosy living area and an airy bathroom with a spacious bath and cubicle shower.

The family grower or prospective gardener will appreciate the thriving greenery out-

side where grape vines and plenty of fruit and citrus trees reside.

The yard is low maintenance with well-established garden beds and a huge shed for storage or perhaps a workshop to tinker in.

Next to the shed there is plenty of room for a veggie garden or a chook pen for some free-range eggs right at home.

The home is fully fenced with a lock-up carport and covered patio on both sides of the home.

7 Redgum Lane

boasts easy access to everything you need including local schools, the Swan View shopping complex, Midland Gate, Midland Train Station and St John of God Hospital.

This is a prime nest or investment opportunity for the lucky homebuyer or astute investor.

Address: 7 Redgum Lane, Swan View.
Price: Expressions of interest.
Agent: Real Estate Plus.

For more, call Judy on 0412 716 278.



Let us give you a helping hand with your real estate sales.

Contact the Echo sales team on **9374 6666**

or email: sales@echo-news.com



Professionals 5 Star Realty

15 Victoria Street, Midland
9274 1655
sales@5starrealty.com.au
www.5starrealty.com.au



Home Open Sunday 30th October 12.15pm - 12.45pm
\$279,000 plus

8 Railway Parade, Midland 251 SQM
BARGAIN HOME WITH DEVELOPMENT POTENTIAL
• Polished timber floor boards, large central lounge
• Modernized kitchen/dining room
• Security screens to windows and doors
• Paved rear courtyard with garden shed
• Block size 251m² zoned City Central area

EXECUTIVE SALES CONSULTANT
Ivan Valkoff 0439 030 409



Home Open Sunday 30th October 12.00pm - 12.30pm
Suit buyers in the mid \$300k's

5/15 North Street, Midland
GATED COMPLEX
• Spacious open plan living with air conditioning
• High ceilings; skirting; ceiling fans; quality blinds
• Security screens; electric roller shutters
• Double garage; courtyard; gas instantaneous HWS
• Land: 197m² Living: 125m² (sizes approximate)

CONSULTANT TEAM KANTOR
Tim Kantor 0410 275 600
Rebecca Kantor 0437 682 268



Home Open Sunday 30th October 12.10pm - 12.40pm
\$389,000

61/45 Elvire Street, Viveash 189 SQM
RESORT STYLE LIVING
• Room to park two cars
• Solar panels, evaporative air conditioning
• Security tinted windows, storeroom
• Security screen on the doors
• Patio with artificial lawn and café blinds

CONSULTANT TEAM KANTOR
Tim Kantor 0410 275 600
Rebecca Kantor 0437 682 268



\$379,000

1 Dickson Drive, Middle Swan 741 SQM
INVESTORS
• Separate lounge room with air conditioning
• Kitchen with heaps of cupboard and bench space
• Activity/games room (pot belly is decorative only)
• Patio, easy care gardens and lawn area
• Carport with roller door, garden sheds

SALES AGENT
Andrew Fonteneau 0409 456 055



Offers in the high \$300k's

4/35 Morrison Road, Woodbridge
SIMPLY STUNNING
• Spacious open plan living
• European laundry/Gas instantaneous HWS
• Alfresco and courtyard
• Single carport & separate storeroom
• Land: 133m² Living: 93m² (sizes approx)

CONSULTANT TEAM KANTOR
Tim Kantor 0410 275 600
Rebecca Kantor 0437 682 268



From \$360,000

15 Mathoura Street, Midland
NO STRATA FEES
• Attractive 3x2 units with high ceilings
• Reverse cycle air cond & gas bayonet point
• Double garage and courtyard
• Choice of 4 units available
• Currently tenanted

CONSULTANT TEAM KANTOR
Tim Kantor 0410 275 600
Rebecca Kantor 0437 682 268



Home Open Sunday 30th October 11.15pm - 11.45pm
From \$580,000

60 Talbot Road, Swan View 2251 SQM
BIG BLOCK, BIG SHED, LOVELY HOME
• Front verandah, spacious lounge room with a fireplace
• Huge family/games/theatre room has a ceiling fan
• 2 x air conds and an old-style air-con
• Separate study, sunroom & extensive paved area outside
• 6 x 9 meter shed, high beam roof & concrete floor

EXECUTIVE SALES CONSULTANT
Ivan Valkoff 0439 030 409



\$399,000

12/61 Elvire Street, Viveash 320 SQM
LEASED UNTIL JANUARY 2023!
• Open plan, a tiled living area for low maintenance
• Split system air conditioner and lovely patio area
• Common pool and spa area, gymnasium and sauna
• Children's playground & BBQ area
• Secure complex with electric gates

CONSULTANT TEAM KANTOR
Tim Kantor 0410 275 600
Rebecca Kantor 0437 682 268



Melinda Wiggers
0439 979 060



Maria Downes
0430 214 455



Robbie Morgan
PA to Management



Helen Colja
0411 152 777



Ivan Valkoff
0439 030 409



Rebecca Kantor
0437 682 268



Tim Kantor
0410 275 600



Andrew Fonteneau
0409 456 055



Josephine Parry
ADMIN



Therese Jackson
Property Manager



Kelly McPherson
Property Manager



Jessica Quinsee
Property Manager

FREE EVENT



Ready, Set, **GO!**

THE HILLS BILLY CARTS FESTIVAL 2022

presented by **LIVE LIGHTER**

Sunday 30th October, 10-4.30pm
Pioneer Park, Mt Helena

**Fabulous billy cart racing down
Evans Street all day!**

- **HUGE RAFFLE, PRIZES, AWARDS AND MORE!**
 - **FOOD, DRINK, ICE CREAM VANS**
 - **LIVE MUSIC AND ENTERTAINMENT**
 - **LIVE RADIO BROADCAST**
- **A FREE FUN FILLED DAY FOR EVERYONE**

Best local event of the year, don't miss out!

www.hillsbillycartsinc.com for full details



 **Aussie**

Aussie Kalamunda,
your local mortgage, refinancing
and lending specialists

**Contact us today for your free
home loan health check.**

08 9257 1686

2 Barber Street, Kalamunda

