

ECHO NEWS

SINCE 1985

Friday, February 17, 2023

ARBORMAN
• Certified Arborist • Fully Equipped and Insured
• Tree Reduction Pruning
• Complex Tree Removal
• Over 20 years Local Hills Specialist
9291 7000 or 0409 916 371
WWW.ARBORMANTREES.COM.AU

Local Business Supporting Local People

VOL.42 NO.1801



Artist's seaside debut

MONUMENT EXO stands tall at almost 3m high and is Mount Helena artist William Leggett's first entry into the prestigious Sculpture by the Sea exhibition in Cottesloe next month.

PG 6

Kalamunda. Your *No Fuss* Funeral Company



Just Cremations

17 Canning Rd, Kalamunda 1800 65 35 95

TREE AESTHETICS
On-line store NOW OPEN
www.treeaesthetics.com.au

PERTH HILLS NEWEST SOIL CENTRE
Sand • Soils • Gravels • Mulches • Firewood

- Pick-up or delivery options available
- Competitive prices
- Wholesale prices on selected products
- Still Perth Hills preferred Tree Service company

OPENING HOURS

8am-4pm Monday-Friday
Lot 10 Talbot Road HAZELMERE
(ENTRY OFF MIDLAND ROAD)

Call us now
9454 8640 or 9250 6599

office@treeaesthetics.com.au www.treeaesthetics.com.au

"You adore it, we store it"



Family owned & operated
We sell boxes and packaging

P: 08 6162 3777

253 Berkshire Road, Forrestfield
info@forrestfieldstorage.com.au
www.forrestfieldselfstorage.com.au



The Framing Factory

Framing makes the Perfect Gift!



Custom Framing
Original Artwork
Memorabilia

OPEN: Mon-Fri 9am-5.30pm | Saturday 9am-12 noon
Unit 7, 4-10 Farrall Rd, Midvale
Telephone: **9250 1660**

E: sales@theframingfactory.com.au
www.theframingfactory.com.au

THE MODIVA NOISE WALL BEING ON ONE SIDE OF THE TRAIN LINE CAUSES THE BLACKADDER ROAD SIDE GETTING ALL THE TRAIN NOISE AFFECTING SWAN VIEW & STRATTON RESIDENTS.

CATERING FOR ALL YOUR SAFETY NEEDS AND SUPPLY OF HOSPITALITY WEAR



Google WASP MIDLAND

OPENING HOURS
Monday – Friday 7.30am-5.00pm
Sat 9am-12 noon

WA Safety Products
info@waspmidland.com.au
www.wasafesafetyproducts.com.au

2/211 Great Eastern Hwy, MIDLAND **9250 7622**

ECHO YOUR THOUGHTS Have your say: editorial@echo-news.com

Potential progress?
Dear Echo News,
Dustpan or new broom?
Opening of the annual electors meeting, offered an indication of a more professional approach - a touch of a new broom?
Incredibly, residents were updated on past motions, staff delivered on responses to provided questions with answers and the chief executive officer articulated a vision.
The hint of past antagonism - the void of us versus them seemed perhaps swept out of the room, by council staffs' energy and the chief executive's genuine effort to respond to questions and statements.
Is this finally the much-awaited chief executive who can help City of Swan to step forward out of the old

1980s?
We all really want and need to believe so!
Then the questions and motions began.
L Deering Woodbrige

So-called upgrade
Dear Echo News,
So much for Central Mall being revitalised and attracting more shoppers after the City of Kalamunda wasted ratepayer's money with its so-called upgrade.
I wandered through there one recent morning and the place appears as dead as ever and a couple more shops have closed on the shopping centre side near to Haynes Street.
Furthermore, as far as I understand, the city still intends to give similar treatment to Haynes Street which has me wondering what could

possibly go wrong there?
C Coulthard Gooseberry Hill

Electronic aliens
Dear Echo News,
Although we had received photos from friends, while on holiday in the south west, it was still a shock on our return home, to actually see this alien being, in the shape of the Shire of Mundaring's tall digital electronic LED sign board in the Glen Forrest Park.
We learned from those in the know, that in 2021 the Shire approved a request for a sign board advertising their events to be erected at their offices on the Great Eastern Highway.
But instead, with no public consultation and just before Christmas, Mundaring residents

Thought of the day
When your work speaks for itself, don't interrupt.
- Henry J Kaiser

woke up to electronic boards in three of their parks.
But wait there's more! When an angry Glen Forrest resident phoned the shire to complain - she was told that three more of these electronic boards were planned for early this year in three more parks, including Darlingtong!
Now Darlingtong residents are hugely protective of their harmonious village lifestyle and their Ratepayers Association are a very motivated, active and innovative group of people.
Having heard the news, they immediately contacted the shire. It should come as no surprise that the response from the shire this time, bordered on the obsequious and they were assured there would be widespread public consultation before any such decision was made!
We shall be watching this play out in the next month when the boards were due to be erected and we look forward to Darlingtong residents telling the shire exactly where to put their digital electronic signage.
M Davy Mundaring

The Echo reserves the right to edit letters for length, legal reasons or clarity. The opinions expressed do not necessarily reflect those of the Echo. All letters must contain the author's full name, address and phone number for verification purposes.

We do not send any of our work overseas to be completed

Do you have Outstanding Tax Returns? AVOID PENALTIES

COME AND MEET OUR FRIENDLY EXPERIENCED STAFF

BAS' · Personal Tax Returns
All Businesses · Partnerships
Trusts · Companies · Sole Traders
Super Funds

Your tax can be arranged via phone or email. We are here to help!

Contactless Appointments Available

Tuesday nights and Saturday mornings available by appointment

RM 9274 7511 RUSSELL MULLER PTY LTD

PUBLIC ACCOUNTANT
Reg. Tax Agent.
Principal: Pat Russell
Chartered Tax Agent & NTAA Member
Unit 3/51 Farrall Road (cnr Rothschild Place) MIDVALE
Mobile: 0418 904 252
email: admin@prussell.com.au

ECHO Notice Board A free service for non-profit organisations **9374 6666** editorial@echo-news.com

Upcoming events

- **The Midland Friendly Garden Club** next meets in the Bruce Douglas Pavilion, Brown Park, Swan View on Thursday, February 23, at 9.30am. The guest speaker will be Graham Blair who will talk on hibiscus. All welcome. Call Laurel on 9279 2858.
- **Mahogany Creek Art and Craft Group** meets weekly on Wednesday from 9.30am to 12.30pm during school terms at Mahogany Creek Hall, Jacoby Street, Mahogany Creek. Everyone brings along their art or craft to work on in a friendly social group with tea and coffee provided. All help to set up and pack away. Call Mary on 0431 201 814 or Jan on 6279 4031.
- **The St Stephens Anglican Church** will be running their

first monthly market day on Friday, February 24 from 8.30am to 11.30am. There will be bargains galore at 9 Salix Way, Forrestfield. All welcome.

- **U3A Swan Hill's** is now offering beginner Mah-Jong lessons for people to then progress to playing social Mah-Jong weekly with their friendly members. For more information text Catherine on 0400 952 585.
- **Kalamunda Youth Swing Band** gives young musicians the opportunity to rehearse and play in a band. Rehearsals are Monday afternoon during school term. For more information call musical director Leah on 0432 973 395.
- **Kalamunda Prostate Cancer Support Group** meets on the fourth Wednesday of each month at Falls Farm, 41 Cagney Way Lesmurdie from 10am-


1pm. For more information call Roy 9295 2522 or Ray 0427 095 892.

- **Midland Men's Shed** holds Social Tuesday every Tuesday from 9.30am to 11.30am in the Baptist Church Hall, Bellevue. Call Kevin 0417 961 971 or for workshop inquiries 0411 833 055.
- **Gidgegannup Men's Shed** meets every Saturday and Wednesday from 8am to noon at the Ian Stannard Pavilion, Gidgegannup Showgrounds. Join in group

woodwork, metalwork or mechanical projects or bring along your ideas and plans to build your own projects. New ideas are welcome for workshops activities, arts and crafts or come along to socialise and enjoy a coffee and chat.

Noticeboard is for non-profits and community groups advertising free/low cost events/programs. Entries must be emailed to editorial@echo-news.com two weeks before the event.

Woofers of the week



Otis is a three-year-old American staffordshire terrier and staffordshire bull terrier. He has to be an only dog as he gets jealous and is too boisterous for smaller children. Sterilised, vaccinated and microchipped. Costs apply. Contact Bakers Hill Dog Sanctuary on 9574 1438.

ECHO News

ADDRESS:
Unit 4/9 The Avenue
Midland WA 6056

Phone: **9374 6666**

Peter W Lewis
General Manager 9374 6605
Peter.Lewis@echo-news.com

DISPLAY ADVERTISING
sales@echo-news.com
Belinda Lyne 9374 6607
Karon McCracken 9374 6610

CLASSIFIEDS, TRADES & SERVICES ADVERTISING
classifieds@echo-news.com
Alanna Hocking 9374 6666

EDITORIAL
editorial@echo-news.com
Anita McInnes 9374 6603
Morgan de Smidt 9374 6602
Liz Gibbs 9374 6601

PRODUCTION
production@echo-news.com
Jeanene Allen 9374 6613
Liz Rowlands 9374 6613

ACCOUNTS
accounts@echo-news.com
Caprice Harries 9374 6604

OFFICE HOURS:
Monday-Thursday:
9.00am - 5pm
Closed Friday
Closed: Weekends & Public Holidays

 echonewsmidland

Rates rises hurt Swan and hills

LIZ GIBBES

SWAN and hills residents are among Western Australia's hardest hit by rate rises, with eight suburbs reaching about triple the national home loan delinquency average.

Following nine interest rate increases since April, the RBA forecasts more increases to come as it attempts to tackle high inflation and low wage growth.

Vinnies WA community engagement services executive manager Andrew York said their financial counsellors were reporting Middle Swan was in the top five suburbs for people in mortgage arrears.

"Increases in the cost of living and rising interest rates have led to a 30 per cent increase in requests for Emergency Relief and Financial Counselling Services in the region," Mr York said.

"Our Vinnies Emergency Relief Hub in Midland cannot keep up with the demand."

He said around 60 per cent of clients have

mortgage stress and were spending more than 30 per cent of their disposable income on mortgages.

"We are seeing more and more low and middle-income families being pushed to the limit, and the predicted increases in interest rates will likely lead to further arrears, and place people at risk of losing homes."

"It's clear that more and more families in the region will experience mortgage stress as the cost of living continues to rise and we expect more and more middle-income families will find themselves under stress and reach out to us for support."

Credit risk assessor Illion released data revealing eight suburbs in the Swan and Hills regions with high rates of home loan delinquency, meaning payments are overdue by more than 30 days.

Illion head of modelling Brett Hasseldine said they were seeing higher numbers of missed home loan repayments in many ar-

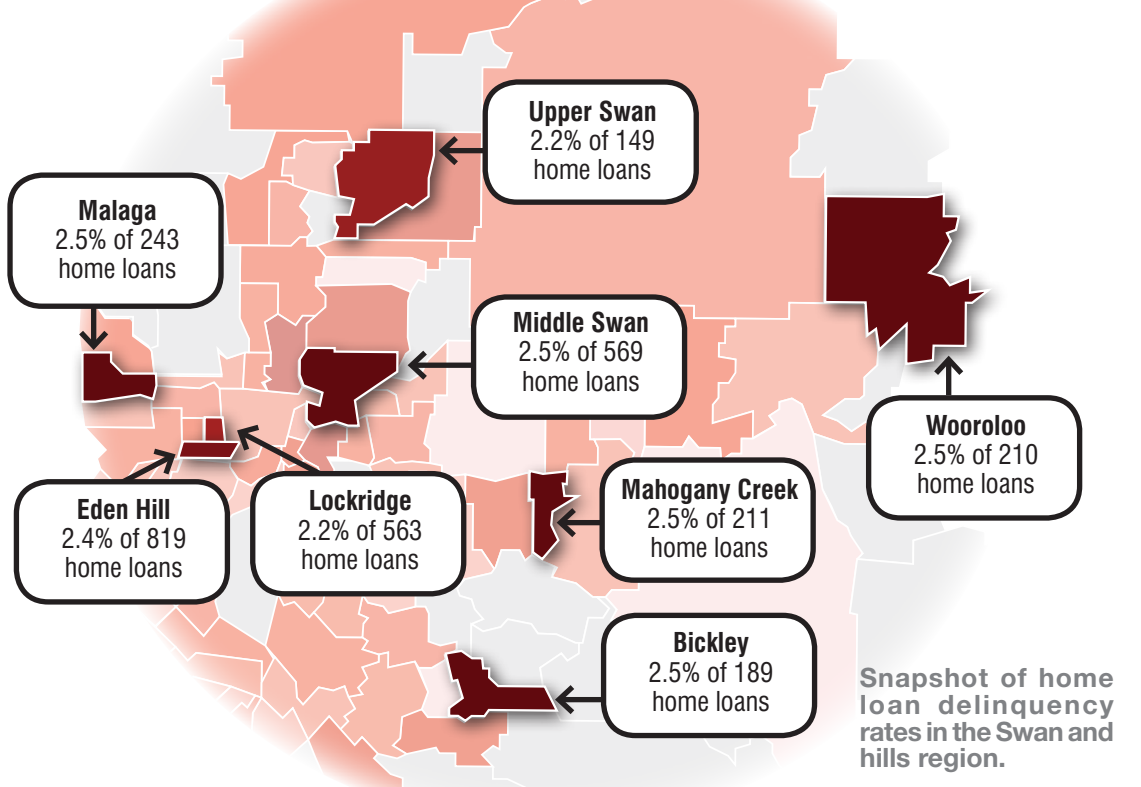
reas north east of Perth such as Middle Swan, Malaga, Mahogany Creek, Eden Hill, and Wooroloo.

"Each of these suburbs has a material number of households that are currently behind on their home loan repayments," he said.

"Households in Midland are currently twice as likely to be behind on their home loan repayments as the average Perth household is (1.7 per cent vs 0.83 per cent)," he said.

Five of the eight suburbs are over triple the 0.83 per cent national delinquency average including:

- Upper Swan at 2.2 per cent of 149 home loans
- Lockridge at 2.2 per cent of 563 loans
- Bickley 2.5 per cent of 189 loans
- Wooroloo at 2.5 per cent of 210 loans
- Mahogany Creek at 2.5 per cent of 211 loans
- Malaga at 2.5 per cent of 243 loans
- Middle Swan at 2.5 per cent of 569 loans, and



- Eden Hill at 2.4 per cent of 819 loans.
- In October 2022 loan delinquency rates in the north-east region of Perth were around 2.98 per cent compared with the state average of 1.73 per cent, according to Moody's Investor Ser-

vice. Figures from the Australian Bureau of Statistics (ABS) this week confirm a contraction in WA's household spending, from 15.5 per cent in October to 13 per cent in November, which then dived to 9.3

per cent in December. Householders can presently expect mortgage repayments to increase about \$400 a month on a \$500,000 loan equating to a 45 per cent hike in repayments since April 2022, according to The Australia

Institute labour market policy director Greg Jericho. Forty-six per cent of Australians overall have had a reduction in disposable income in the past year, according to a consumer survey from YouGov this week.



Residents Glenys Laine and Michael Andrews say noise from freight trains has increased since installation of the wall.

Freight train noise wall failure

ANITA McINNES

LONG term Swan View and Stratton residents say the noise from freight trains, which never used to bother them, has become unbearable since the construction of a noise wall in the Movida estate.

On February 8 City of Swan councillors voted unanimously to ask the chief executive officer Stephen Cain to investigate the reports of an increase in freight rail noise affecting residential amenity in Swan View since the construction of the Movida estate wall.

The report is to include an acoustic assessment of the noise levels in Swan View and to advise if any action can be taken to modify the noise wall.

The increased noise is of greatest concern to most residents who spoke to *Echo News* but Michelle Gymer of Swan View, who said they had lived in their house since 2000, was

also worried about accidents, graffiti and wildlife

"Since they've put up the wall the noise has gotten louder - our windows sometimes shake if the big freight trains go past," she said.

"My concern is what is going to happen to the structural damage of the house - say I want to sell it in 10 years."

"We don't have a wall on our side - it's wide open at Curtin Way anyone can go down there - there's no protection whatsoever."

"We've got no protection on our side, we've got no cushion from the noise, but the other side is all looked after and that's still getting built so what about the residents that still live here and have for years."

Michael Andrews has lived in Stratton Boulevard about 2km away from the crossing at Farrell Rd as the crow flies since 2000.

"Before the train was just a very vague thing in the background now

it wakes me up continuously at night time - several times a night and through the day I can hear it in my backyard, and you can hear the train tooting usually three times and it's just changed ever since that wall's been put up," he said.

"We need something on this side to counteract it."

Glenys Laine lives just off Blackadder Rd.

"We can't have our doors and windows open and I'm the same, it wakes me up at night, doors rattling, windows rattling - it's just getting unbearable," she said.

Trevor Treloar has lived on Blackadder right across from the railway line since 1996.

"We couldn't hear the trains coming from the east until they got to us and now we can hear them as they go across the crossing," he said.

"The big concern for us is when the next subdivision gets done they'll also have a wall and there is absolute-

ly nothing between the railway line and those houses down that end of Blackadder Rd because it's all level and it's just going to get so much louder."

"We used to sleep with the windows open in summer time to get the easterly, we don't now."

The officer's report presented to the council said investigations indicated the noise model prepared in support of the Farrall Road local structure plan to the west of the railway, although meeting the requirements of SSP 5.4 - road and rail noise, may not have considered noise reflection off the new wall to the east.

"It should however be noted that SSP 5.4 - road and rail noise does not require proponents to consider noise impact on existing development," the report said.

"The noise wall as constructed therefore meets the requirements placed on the developer by the WAPC."

Burials-Cremations-Country-City

www.purslowetinettifunerals.com

plan YOUR Goodbye

YOUR WAY

AUSTRALIAN FUNERAL DIRECTORS ASSOCIATION

PURSLOWE
TINETTI
FUNERALS

WA Family Owned

PH: 96221411

Prepaid Payment Plans Available. Call us to receive a free booklet to prepare for your future.

ECHO NEWS **Subscribe to your online edition now!**



Get your **FREE** Echo News direct to your inbox every week.

Go to our website www.echonepaper.com.au & click on the Subscription link in the top right hand corner



Peter takes the helm at *Echo News*

ECHO News has recently appointed journalist and corporate communications advisor Peter W. Lewis as its new general manager.

Peter has been involved in media, public relations, corporate communications and stakeholder engagement for more than 40 years, and was previously the owner and publishing editor of the York Express newspaper and the Hinterland Herald newspapers, covering the Sunshine and Cooloola Coasts in Queensland.

Beyond journalistic roles over the past 20 years he has also worked in corporate communications for a variety of government agencies in communications and publishing, media management and digital marketing, including production of eNewsletters and social media content, and editorships of Western Fisheries and Prospect magazines.

Prior to roles in corporate communications Peter worked extensively in the media industry as an editor and journalist throughout Western Australia and Queensland, previously working for the Broome News, Gascoyne Telegraph, Geraldton Guardian, Times of the West, Sunshine Coast Citizen, Nambour Chronicle, Weekend Examiner, and dailies The Bulletin and Gympie Times.

"I am looking forward to guiding *Echo News* into its next stage as it expands its digital and online presence, along with the more

than 12,000 printed copies that are distributed around the Cities of Swan and Kalamunda, Shire of Mundaring and Town of Bassendean," Mr Lewis said.

"Our online penetration continues to increase and supplements our printed copies with more than 8000 visits to our webpage in the past week where readers can access our online version, coupled with 5000 subscribers to our digital edition and another 5000 hits on our Facebook page with more than 3000 followers and growing."

The digital version can be read anytime on computers, phones, laptops and tablets and offers further exposure to our advertisers, and Mr Lewis called on devoted readers to share the page on Facebook and invite their friends to become a follower.

To subscribe to the digital edition just go to the Echo News webpage at echonepaper.com.au and don't forget to follow us on Facebook.

"These are challenging times for independent newspapers like *Echo News*, and readers can show their support by subscribing to their local news source, which continues to increase its digital penetration to value-add to our printed product for our valued advertisers, without which we would not be able to survive," Mr Lewis said.

AirCon
SERVICE CENTRE
SERVICE - REPAIRS - INSTALLS

MITSUBISHI ELECTRIC

MITSUBISHI ELECTRIC AP SERIES WALL HUNG SPLIT SYSTEMS

SUPPLIED & INSTALLED FROM \$1730.00 INCLUDES GST

(08) 9250 8988 4/135 CLAYTON STREET, BELLEVUE WA 6065

contact@airconservicecentre.com.au
www.airconservicecentre.com.au

ABN 84 106 867 930

Look out for the **ECHO** NEWS

AVELEY:

- Aveley Newsagency**
Cnr Millhouse Rd & Egerton Dr
- Aveley Shopping Centre**
Cnr Millhouse Rd & Egerton Dr
- BASSENDAN:**
- Bassendean Shopping Village**
Cnr West & Old Perth Rd
- BEECHBORO:**
- Beechboro Library**
332 Benara Rd
- BOYA:**
- Boya Community Centre**
Clayton Rd & Scott St
- BULLSBROOK:**
- Bullsbrook Newsagency**
2544 Great Northern Hwy
- CHIDLOW:**
- Chidlow Growers Market**
570 Rosedale Rd
- Chidlow Postal & Home Centre**
Thomas St
- DARLINGTON:**
- Darlington Liquor**
4 Montrose Ave
- EDEN HILL:**
- Eden Hill News & LPO**
S3/85 Walter Rd

ELLENBROOK:

- Dome**
36 Main Street
- Espresso Coffee**
Ellenbrook Central
- Ellenbrook Central**
204 Pinaster Rd (cnr The Promenade)
- Tania Lawrence Office**
3/38 Main St
- Total Health Ellenbrook**
3/42 Main St
- Woodlake Village S/Centre**
Sunray Circle
- FORRESTFIELD:**
- Edinburgh Road S/Centre**
Edinburgh Rd
- Forrestfield Forum**
20 Strelitzia Ave
- Walridge Country Estate**
Berkshire Rd
- GIDGEGANNUP:**
- Gidgegannup News**
Toodyay Rd
- GLEN FORREST:**
- Glen Forrest Post Office**
Railway Pde
- IGA Glen Forrest**
Hardey Rd
- GUILDFORD:**
- Guildford Newsagency**
James St

HELENA VALLEY:

- Helena Valley Lifestyle Village**
2340 Helena Valley Rd
- IGA Helena Valley**
Torquata Blvde
- HERNE HILL:**
- Herne Hill Village Lottery Centre**
777 Gt Northern Hwy
- Swan Settlers Market**
124 Lennard St
- HIGH WYCOMBE:**
- High Wycombe Village Shopping**
Kalamunda Rd
- Newburn Newsagency**
47 Newburn Rd
- The Village Supa IGA**
120 Wittenoom St
- KALAMUNDA:**
- City of Kalamunda**
Railway Rd
- Crabbs IGA**
12 Canning Road
- Kalamunda Centro S/Centre**
39 Railway Rd
- Kalamunda Library**
7 Williams St
- Kalamunda Newsagency**
Haynes St

Nightingales Pharmacy

- 123 Canning Rd
- Jack Healey Centre**
21 Mead St
- LESMURDIE:**
- IGA Lesmurdie**
241 Lesmurdie Rd
- Sanderson Road S/Centre**
Sanderson Rd
- MAHOGANY CREEK:**
- Begonia Pets**
5895 Great Eastern Hwy
- MAIDA VALE:**
- Hill View Public Golf Course**
350 Kalamunda Rd
- Maida Vale IGA**
Unit 2/31 Maida Vale Rd
- Zanthorrea Nursery**
155 Watsonia Rd
- MIDLAND:**
- Baptistcare**
1A North St
- Centrepoint S/Centre**
307 Great Eastern Hwy
- City of Swan Admin. Office**
Morrison Rd
- Echo News Office**
4/9 The Avenue
- Greg's Discount Drug Store**
243 Great Eastern Hwy

IGA Supermarket

- 295 Great Eastern Hwy
- Midland Library**
45 Helena Street
- Professionals 5 Star**
15 Victoria Street
- Real Estate Plus**
Shop 2/5 Junction Parade
- Swan Valley Fresh Markets**
Cnr Morrison Rd & Keane St
- MT HELENA:**
- IGA Mt Helena**
McVicar Pl
- MUNDARING:**
- Brookwood Realty**
2/1 Mundaring Weir Rd
- Coles Supermarket**
Great Eastern Hwy
- Hills Fresh**
7110 Great Eastern Hwy
- Mundaring Newsagency**
7295 Great Eastern Hwy
- Mundaring Village Shopping Centre**
7295 Great Eastern Hwy
- Mundaring Visitors Centre**
7225 Great Eastern Hwy
- Shire of Mundaring**
7000 Great Eastern Hwy
- PARKERVILLE:**
- Parkerville General Store**
2170 Seaborne St

SAWYERS VALLEY:

- Peak Service Station**
96 Great Eastern Hwy
- SOUTH GUILDFORD:**
- IGA Waterhall**
9 Waterhall Rd
- STONEVILLE:**
- Stoneville Fresh Food Market**
5345 Richardson Rd
- STRATTON:**
- Stratton Park S/Centre**
O'Connor Rd
- SWAN VIEW:**
- IGA Swan View**
139 Morrison Rd
- Swan View S/Centre**
Marlborough Rd
- UPPER SWAN:**
- Vibe Roadhouse**
1447 Great Northern Hwy
- WEST SWAN:**
- Caltex West Swan**
West Swan Rd
- WOOROLOO:**
- Wooroloo Liquor & General Store**
3775 Government Rd

Privately owned & proudly independent

Trio face court over alleged kidnapping

THE trio accused of murdering Cassius Turvey appeared before Midland Magistrates Court this week on a new charge relating to the kidnapping of a teenager four days before Cassius was allegedly fatally attacked.

Jack Steven James Brearley (21) of Swan View, Mitchell Colin Forth (24) of Chidlow and Aleesha Louise Gilmore (20) of Herne Hill each appeared via video link on Tuesday.

Brearley and Forth were charged with detaining another with intent to compel the doing of an act and unlawful wounding with a circumstance of aggravation.

Gilmore was charged with detaining another with intent to compel the doing of an act.

The charges relate to allegations that a 15-year-old boy was chased in the Swan View area before he was caught, punched and kicked.

WA Police said the boy was then put in a vehicle and taken to a house where he was held before being released.

Brearley's lawyer requested to have the court closed to the public to make a bail application on the charges connected to the alleged kidnapping.

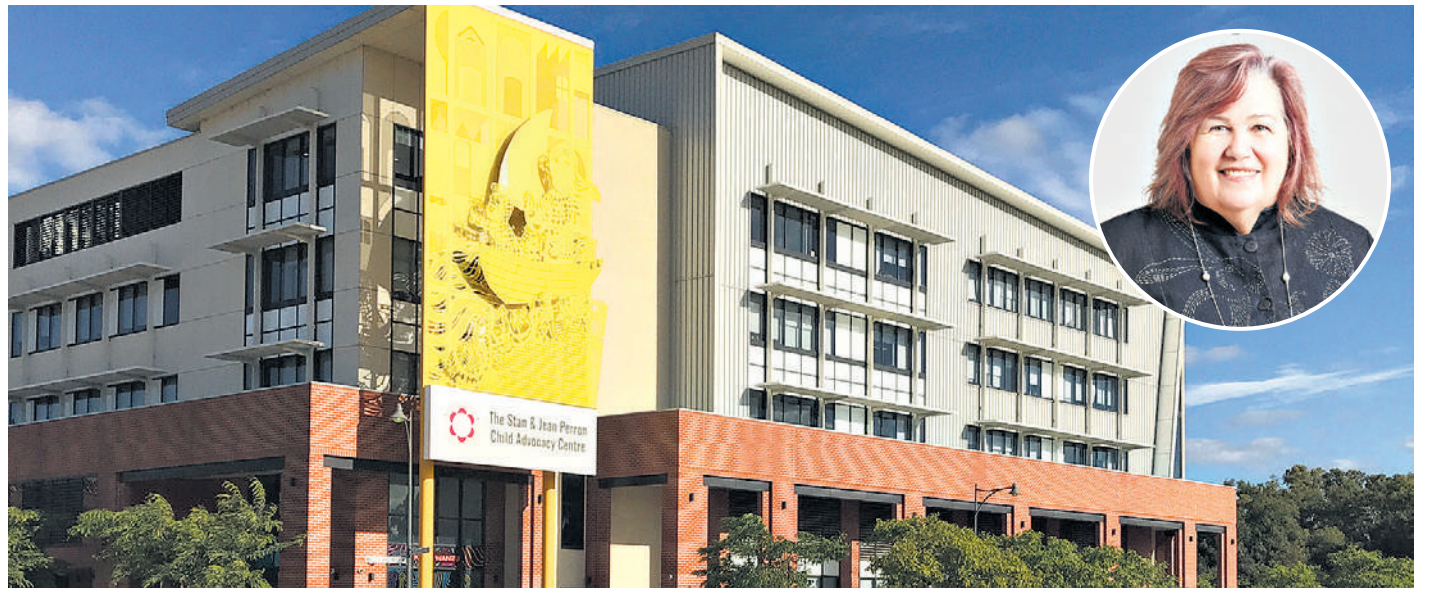
She also said there were concerns about the safety of Brearley's family members, stating that "people have been hurt due to vigilantism."

The bail application was adjourned to March 2.

Brearley, Forth and Gilmore were remanded in custody until March 29 when they will appear in Stirling Gardens Magistrates Court for the murder charge related to Cassius.

The trio and Brodie Lee Palmer (27) of Wundowie were also charged with assaulting a 13-year-old boy who was walking with Cassius on October 13.

Those charges were read to Gilmore and Palmer, who also appeared via video link and will appear again in court on March 29.



Stan and Jean Perron Child Advocacy Centre in Midland where the pilot will be based. Inset: Parkerville Children and Youth Care chief executive Kim Brooklyn.

Seized funds to help victims

LIZ GIBBES

ALMOST \$200,000 has been granted by the state government to a Midland pilot project to give psychological support to young people traumatised by homicide.

Parkerville Children and Youth Care was one of six Criminal Property Confiscation Grants Program recipients, and will receive \$190,322 to support children, young people and families impacted by homicide.

The pilot project at the Midland centre will provide intervention and support from a clinical psychologist, helping those who are ineligible, to receive other services.

Parkerville Children and Youth Care chief executive Kim Brooklyn said it was ground-breaking for the service and would now allow the specialised program to get started.

"It's a brand new service for us although we already have the skills-base for it, but more importantly it offers something to people that currently isn't there," Ms Brooklyn said.

"Each person is quite different in how really significant traumatic events impact on them and so being able to assess what they need specifically, then design all the interventions around what they need is what this service will do.

"That might be psychologi-

cal services through our clinical psychs, or it might actually be other practical supports, it's just really dependent on the people."

Ms Brooklyn said homicide and child abuse instances were so outside the normal range of people's experience that most people did not have the skills and abilities to deal with it because they didn't deal with it normally, and so the work that the Midland clinic will do is around helping them.

Consultations between Parkerville Children and Youth Care, WA Police and the Office of the Commissioner for Victims of Crime brought to light a gap in service provision for specialised psychological as-

essment for intervention and support.

WA Police statistics show there were 97 victims of homicide in 2020-2021 and 95 in the previous year, while the current figure for 2023 is already 45, indicating a strong need for support services.

Ms Brooklyn said each victim had possibly several family members who may require support as a result of the impact of what has occurred.

The Criminal Property Confiscation Act 2000 enables re-distribution of confiscated proceeds of crime for a number of purposes, including the development and administration of victim support programs or activities.

Bedshed | Midland | Open 7 days a week

UP TO
50% OFF



MATTRESSES

Bedshed | Midland

50% OFF

RRP \$1,999
NOW \$999

50% OFF

RRP \$2,599
NOW \$1,299

50% OFF

RRP \$6,099
NOW \$3,049

50% OFF

RRP \$8,499
NOW \$4,249

ENDS THIS WEEKEND

No one's better in the bedroom™

bedshed.com.au

Bedshed

MIDLAND

Midland Home, Cnr Clayton & Lloyd Sts

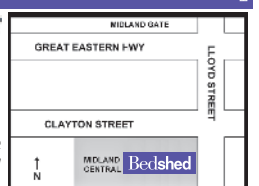
OPEN 7 DAYS

LAYBYS AVAILABLE



Phone **9274 4177**

Savings are off recommended retail price (RRP). Some items may have been sold at some Bedshed stores at less than RRP as Bedshed encourages its stores to offer its products at competitive prices. Sale prices available from Friday 3/2/23 until Sunday 19/2/23 or while stocks last. Prices may be higher in country areas due to freight. Not all products available to order or on display in all stores. Mattresses and accessories are not included unless stated. Ensembles are pictured for illustration purposes only. Bedshed attempts to accurately represent furniture in their photography; however there may be colour variation to in-store product on occasion. Finance and lay-by available on selected sale stock. Ensembles are pictured for illustration purposes only.



Artist's seaside debut

MORGAN DE SMIDT

MONUMENT EXO stands tall at almost 3m high and is Mount Helena artist William Leggett's first entry into the prestigious Sculpture by the Sea exhibition in Cottesloe next month.

"I am excited, I have never had so many eyes on my work before which will be interesting," Leggett said.

His distinct art practice draws from his education in environmental art and design and interactive multimedia and a career in the mining construction industry.

Leggett discovered the medium which would become the foundation of his large, intricate sculptures after being appointed to a new area at work.

"I started working with a concrete crew, I was loving the material and even while I

was at work I hadn't stopped dreaming about art.

"If anything, the industry I was involved in became another aspect of my art in an indirect way.

"The structures I was building and the sculptural aspect to the built environment would always be considered when I was doing something as simple as a concrete slab or building giant gas tanks."

Leggett's sculpture, bound for Cottesloe beach next month, reflects a shift in his artistic style.

"The design is frame-like as opposed to earlier works which were quite chunky and heavy," he said.

"EXO in Monument EXO is shorthand for exoskeleton of previous works, it is an exercise in positive and negative space.

"When you look through the sculpture there is all these

different windows and I think that is going to work well down at Cottesloe."

Working from his studio in Mount Helena surrounded by greenery, Leggett said nature was always considered in his sculptures.

"When I'm building, I'm considering how we've lived across time and our interactions with nature," he said.

"You're going to be able to see the ocean and sky through Monument EXO and at the moment the studio is constraining it, so I just want to get it out there."

Leggett is the co-founder of artist collective Studio Payoka and is represented by STALA Contemporary.

Sculpture by the Sea, on from March 3 to March 20, also features works by exhibition stalwart Ron Gomboc of Middle Swan and Darlingtton's Jina Lee.

Mount Helena artist William Leggett and his sculpture Monument EXO, on display at Sculpture by the Sea next month.



Shutdown follows new design reveal

THIS week Metronet announced the Midland and Airport lines would be shutdown for a month to carry out essential works on Bayswater Station as part of the new Morley-El-lenbrook line.

During the shutdown, from March 31 to April 26, works will take place including removing the infamous Bayswater Bridge,

while new track and other rail systems will be installed allowing the Midland and Airport lines to run on the Bayswater rail bridge.

The news comes after designs of the new Midland Station were released recently.

Construction on the new Midland Station will begin in the middle of this year

with major construction expected to be completed in 2025.

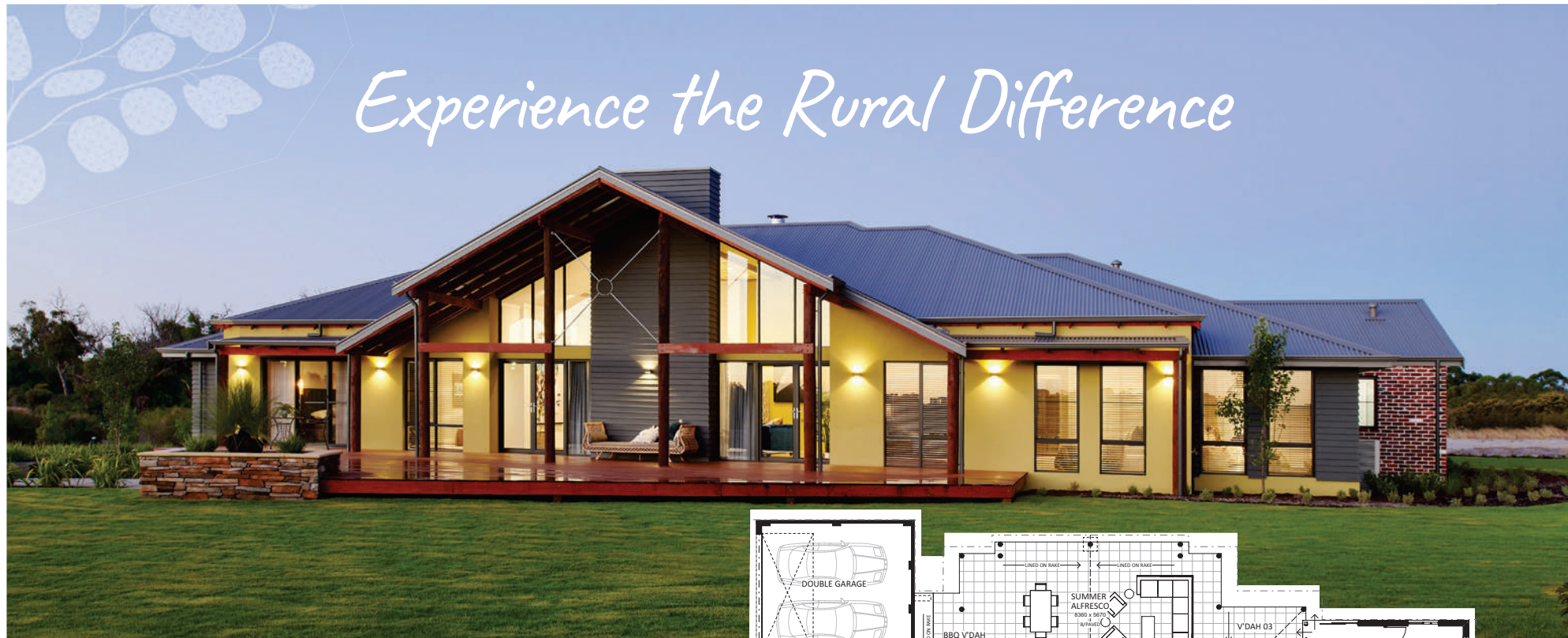
Midland MLA Michelle Roberts said the upgrade was a "game changer" for Midland.

"It's a major step forward for our residential communities and for those doing business in Midland," she said.

"It'll mean much better ac-

cess for the elderly and will greatly improve accessibility, especially to the Midland Hospital and related facilities."

Artist impressions feature a contemporary design reflecting the local Noongar culture and landscape against the industrial backdrop of the Midland Railway Workshops.



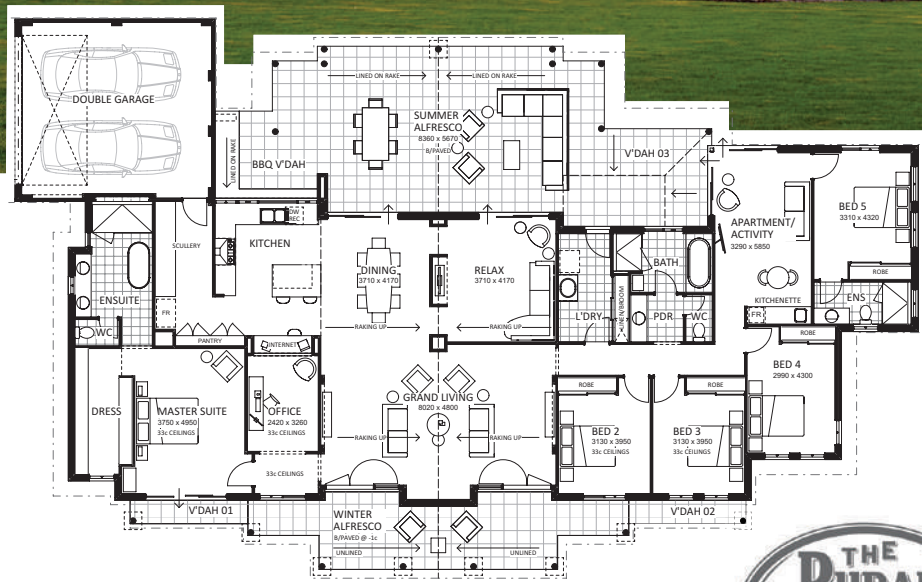
Experience the Rural Difference

The Hinterland Retreat

Soak up views forever from this 5-bedroom hideaway. It's everything you've ever wanted in a rural getaway, with rustic bush poles, soaring ceilings, a dual-sided fireplace, and spaces to relax, work and spend that all-important time with family and friends.

Pick your setting and let the timeless character and charm of this modern retreat sooth your senses.

For more information call 6141 6810 or visit ruralbuilding.com.au



VISIT ONE OF OUR DISPLAY HOMES

THE HINTERLAND RETREAT
48 Carriage Chase, Banjup

THE KALGUP RETREAT
40 Waterville Road, Dunsborough

THE JULIMAR RETREAT
7 Brookbank Drive, Bullsbrook



OFFICE LOCATIONS | Albany | Bridgetown | Bunbury | Busselton | Esperance | Geraldton | Perth

BC11421

MEMBER OF THE JWHGROUP

Marron venture part of Harvest in the Swan Valley

ANITA McINNES

YOU can learn all about marron during Harvest in the Swan Valley at Jon Jessop's property in Henley Brook after he installed a lake specially designed for them to breed and grow in.

At the Forest Road property visitors will be able to see a live marron in close to its natural habitat.

They will also have the opportunity to taste the delicacy, which is the biggest freshwater crayfish in Western Australia – and the third largest freshwater crayfish on earth.

The Jessop family bought their property – a former bed and breakfast, which included a disused restaurant, stables and big undercover area in 2019.

After renovating and the addition of a gigantic playground the Swan Valley Station opened in June 2020.

Mr Jessop decided to produce marron after discovering they were previously grown in the Swan Valley about 20 years ago and that the Swan Valley is immensely popular with Singaporeans who want to see Australia and especially West

Australian animals.

"Marron is a famous unique West Australian creature so we developed that," he said.

"We spoke to the marron association – there are some issues with growing marron in Perth being temperature, water quality and they typically grow best down south in beautiful cool south west water," he said.

"But we got good quality water, we put in a deep lake, we put a great growing sculpture under the lake so there's truckloads of old gnarled wood in the floor of the lake for them to breed and hide in.

"And also deep water gives them cool water – over 25 degrees marron are uncomfortable and they go walk about."

He said the marron venture was more tourism-orientated so they would not be producing them for export.

The marron lake only opened in May 2022 and that was when they put in their breeding stock.

"We put in about a 1000 marron – a lot of small ones and some bigger ones because they're expensive.

"They're now ready for our inaugural harvest, which is the Swan Valley harvest festival.

"We want people to learn

about them, to see them close up and personal and also to eat them.

"We have purging ponds here as well for cleaning the marron so they will be able to see a real live marron in close to its natural habitat.

Seeing marron up close and personal is not just a new experience for overseas visitors but also many Western Australians. "We had people here last week that were saying 'Oh gee I thought marron was a fish' so it is educational it's interesting.

"Around Perth a lot of people have got small back yards and they come here and they've got space and the lawn and the vines, and the lake and the aquaculture all going on.

"We focus on the kids, it's a great educational experience for kids the Swan Valley."

As well as the playground, lake and the marron the property has a sculpture trail.

During Harvest in the Swan Valley, which runs from Thursday, February 16 to Sunday, March 5 growers, makers and producers celebrate the season's delights by offering boutique tours and tastings, masterclasses, long lunches and dinners and more.



Swan Valley Station aquaculture manager Evan O'Neill at the Forest Road property where visitors can see marron in close to their natural habitat. Picture: Anita McInnes

Thank you for Supporting Australian Businesses

LOCALLY MANUFACTURED IN OUR MIDVALE FACTORY



AUSSIE OUTDOOR BLINDS



Aussie Outdoor Midland is a locally owned and operated business. We use structural grade AUSTRALIAN Aluminium to manufacture our blinds and the best quality materials available. This ensures you have a high quality product backed up with comprehensive warranties that will last many years. We have a range of blinds to suit your lifestyle and budget.

Our current offer is a FREE MOTOR UPGRADE (7 year replacement warranty) for all Interlock blinds plus a 35% Factory Direct Discount. Interlock blinds have a 50 knot (92km/hr) wind rating plus a 10 year warranty on the mesh. The mesh has a range of features to ensure longevity and a large colour range. You can match the mesh and frame to existing colours or the new range of colour bond mesh colours.

Alfresco Classic blinds can be made with mesh or pvc, clear or tint. A great solution for year round outdoor entertaining in comfort and style. Keep your outdoors clean and comfortable all year!

The show room at 1/6 Elmsfield Road, Midvale has an outdoor display as well as an indoor display.

Call 9274 0555 for an obligation free appraisal.

FREE MOTOR UPGRADE FOR INTERLOCK ZIPLESS BLINDS

SPECIAL RUNS TILL 28TH FEBRUARY 2023. T&C'S APPLY.



THERMA WINDOW BLINDS



FREE MOTOR UPGRADE

Aussie Outdoor: Australia's largest Outdoor Blind Manufacturer!

SHOWROOM 1/6 Elmsfield Rd, Midvale 6056 • E: midland@aussieoutdoor.com.au (08) 9274 0555 (08) 9249 1211 • www.aussieoutdoor.com.au

HILLSIDE OUTDOOR BLINDS



* 25 yrs experience * 100% Aussie/Locally made
 * Full range of fabrics * All types for all budgets
 * Mesh for privacy, sun, rain, & wind protection
 * Free quotes, reliable & prompt supply & fit.

LOCAL FAMILY RUN BUSINESS IN THE HILLS
Ph. Yvonne on 0416 233 277
 See our Facebook page for reviews & photos



SPECIALISTS
in the Bathroom



Our friendly staff are trained to assist you to help design your perfect bathroom!

Vanity 900 Torino **\$499**

Bathroom Decor & Tiles

FROM **\$19m²**

MIDLAND: 137 Gt Eastern Hwy | Ph: 9274 2677
OPEN: Mon-Fri 9am-5pm | Sat: 9am-1pm
 midland@bathroomdecor.com.au

Students from Moorditj Noongar Community College, Clayton View and Middle Swan Primary enjoy meals at the vacation care program.

Inmates feed Middle Swan children

MORGAN DE SMIDT

INMATES from four WA prisons have fed local students through a holiday program developed by one compassionate primary school staff member.

Moorditj Noongar Community College attendance officer Melissa Bill recognised students' need for support during the summer holidays and established a program with their well-being in mind.

The vacation care program, run from the college, was designed to provide students with breakfasts, lunches and activi-

ties from sports to boardgames.

The Department of Justice arranged for inmates at Boronia Pre-Release Centre for Women, Wandoo Rehabilitation Prison, Bandyup Women's Prison and Karnet Prison Farm to assist the program.

Bandyup Women's Prison fundraised and supplied students with a food voucher from Subway.

Women at Boronia and Wandoo produced and packaged breakfasts and lunches including lasagna and salad and take-home meals, while Karnet Prison Farm supplied meat.

Inmates told Wandoo superintendent Jodi Miller it was a rewarding experience cooking for the children and pleasing to hear how much they enjoyed the meals.

"The women took great pride in what they cooked, making extra effort to deliver fresh, quality meals," Ms Miller said.

"Some said it felt like they were cooking for their own children."

More than 60 children from Moorditj Noongar Community College, Middle Swan and Clayton View Primary School attended the vacation care program.



Professionals 

WIN TWO \$15,000 HOLIDAY PACKAGES*



Each winner will receive a \$10,000 Webjet e-Gift card and \$5,000 spending money!

Find out what your property is worth with a free Professionals property appraisal before **31st March 2023** to enter the competition.



TO ENTER SCAN THIS QR CODE

15 Victoria Street, Midland • 9274 1655
 jo@5starrealty.com.au • www.5starrealty.com.au

*Competition is only available to WA residents and people over the age of 18.

Milestone celebration for Gilbert's

ONE of Midland's top fresh produce providers recently marked 12 years of serving the community.

Gilbert's Fresh Market Midland celebrated the milestone with bright decorations, in-store festivities and cake.

The store thanked its loyal customers and dedicated staff as well as two team members Julie and Rosa who have served the fresh market since its opening.

Julie served the first customer while Rosa's late mother shared her birthday with the store.

Many local teenagers have also started their first job at Gilbert's Midland, including team member Hayley.

Hayley started as a casual employee during high school and has now worked full time for the past decade.

She is one of more than 30 hardworking team members that keep Gilbert's Midland running every day.

Alongside supplying Midland and surrounding suburbs with fresh food for seasonal recipes, read-made meals, flowers and more, Gilbert's Fresh gives back to locals.

Through its Gilbert's Support Our Schools program, running at its Midland, Hilton and Willetton stores, one per cent of money spent by customers is



The Gilbert's Fresh Market Midland team celebrated their milestone recently.

donated to a nominated school.

The donations fund educational resources, library books, sporting equipment, musical instruments, technology, play-

ground improvements and excursions.

More than \$150,000 has been donated to 90 schools through the program.

PROTECT YOUR MOST VALUED POSSESSIONS, YOUR FAMILY & YOUR HOME!

Full Termite Treatment

NO CONTRACTS

INCLUDING A **FREE PEST COVER**™

FOR ONLY \$795

5 YEARS WARRANTY

IF ANY TERMITES APPEAR ON THE PROPERTY OVER THE NEXT 5 years - WE WILL TREAT THEM **FREE** OF CHARGE

ALL SUBURBS - LIMITED TIME



USING

BIFENTHRIN

(Price based on homes up to 200m²)

Here's What You Get

- ✓ Full Termite Treatment to Australian Standards
- ✓ Includes the Treatment of ACTIVE Termites
- ✓ **FREE PEST COVER**™ with every Treatment
- ✓ Complete Termite Inspection and Full Report
- ✓ Small Sheds, Pergolas and Gate Posts included
- ✓ 5 Year Warranty

What We Use

- ✓ We use BIFENTHRIN which repels termites
- ✓ A minimum of 5 YEARS PROTECTION against termites
- ✓ Won't harm plants
- ✓ Our products for GENERAL PESTS won't stain or smell
- ✓ Children and pets can remain indoors



FOR WOODEN FLOORS



FOR THE ROOF



FOR CONCRETE FLOORS



WE CREATE A BARRIER AROUND THE CAVITY WALLS

GENERAL PESTS & TERMITE TREATMENTS



No Bugs...No Termites for 12 Mths Inside and Outside for only \$295

FOR SINGLE STOREY HOMES UP TO 4 BEDROOMS LIMITED TIME ONLY

PEST COVER™
A SAFE AND EASY WAY

PERTH'S BEST WARRANTY

IF ANY PESTS COME BACK WE COME BACK...

DID YOU KNOW?

Most firms will charge \$180 or more per pest and give only a 3 month warranty!

INSIDE

Our products won't stain or smell. We will treat anywhere you want! Children and Pets can remain indoors during the treatment.

THE ROOF

After inspecting the roof for termites we use a non-toxic dust that treats Silverfish, Crickets & Spiders for up to 12 months. We bait the roof for rats if necessary.

OUTSIDE

We use BIFENTHRIN which is also registered for Termites. Plants won't be harmed. If we find termites we'll treat them on the spot. We treat sheds, paths, fence capping, EVERYWHERE!

ALTHOUGH THIS INCLUDES THE TREATMENT OF ACTIVE TERMITES, TERMIPEST RECOMMENDS A FULL TERMITE TREATMENT IF TERMITES ARE FOUND

Here's What You Get

- ✓ Complete General Pest Treatment Inside, Outside and the Roof
- ✓ Full Termite Inspection Report
- ✓ Treatment of any ACTIVE Termites for 12 Months
- ✓ 12 Months warranty on 16 pests including Termites
- ✓ If you move home within the 12 months, your **PEST COVER**™ goes with you. We will respray your home free of charge
- ✓ Environmentally Friendly Products

FOR 12 MONTHS YOU'RE COVERED FOR

Termites, caterpillars, cockroaches, mice, rats, carpet beetles, silverfish, wasps, bees, earwigs, slaters, fleas, moths, rickets, spiders and ants

Full Termite Treatment using **TERMIDOR** special \$1195



PROTECT YOUR INVESTMENT



DON'T LET THIS HAPPEN TO YOUR ROOF!

5 YEARS WARRANTY

Termidor provides long term residual protection and may eliminate termite colonies

TERMIPEST PTY LTD

PEST CONTROL

TERMITES | SPIDERS | RATS | ANTS | BEES
COCKROACHES | WASPS | SILVERFISH

1300 774 337 • 1300 SPIDER
termipest.com.au

The York Society Presents
 2023 York
 Photographic Awards
 1-10 April 2023
 Sandalwood Yards, Avon Tce, York
 Optional theme
Avon River Alive
 "Bilya Dordak"
 Entries open February 1st 2023
 Close March 12th 2023
 Minor theme for Digitally delivered images only
Birds in Flight
 Check our Terms & Conditions of Entry for Details
 Enter online at www.theyorksociety.com.au



York Photographic Awards 2023...now taking entries!

THIS year's York Photographic Awards and Exhibition will run from 1-10 April at the Sandalwood Yards Gallery, Avon Terrace York.

The awards will continue to include our successful junior section for aspiring photographers between the ages of five and 12, with the theme of 'River Life'.

We are introducing a digital delivery category with a prize of a fabulous digital camera with the theme of 'Birds in Flight' for pictures emailed to us.

The optional 2023 theme which all adults can enter if they wish is 'Avon River Alive'.

The closing date for all entries is March 12. Entry conditions and all entries are online at www.theyorksociety.com.au



High Quality - Cost Effective - Great Results

BLACK Dog Earthmoving & Recycled Asphalt WA are a locally owned business based in Perth Hills.

My company has been servicing the community, from Bullsbrook to Byford for over 15 years.

I have expert knowledge in this field which allows us to bring your project to life in the most effective way.

Servicing the Perth Hills area allows me to source local, high-quality products.

I ensure that all the materials I use will provide you with your desired result, and using site



materials for diverse applications allows me to keep your project cost down, without sacrificing the quality.

The result is a finished product that we're proud of and that you can afford.

Allow me to beautify your property, utilising our earthmoving equipment, I can tackle any landscaping project and produce a beautiful outcome, I will use quality supplies you can afford so everybody wins.

I can perform any earthmoving project, big or small, so call Cameron on 0409 374 004 for further information.

Learn Something New @ Jus Dance

Jus Dance are dusting off their dancing shoes and we invite all our regular clients and anybody who is interested to come dance with us in 2023

Our new term starts March 6 at our Maddington Studio and March 7 in Kalamunda.

Our Social Dance - will be held on Friday February 24 from 8pm till 11pm, only \$12 p/p.

Enrol now, as it is never to late to learn something new.

Adult and Senior dance classes, day and evening include Ballroom, Latin, Salsa, Rock 'n Roll, Jive & Swing and New Vogue. Youth & Kids Ballroom & Latin classes for children ages 5 - 17 yrs. Kid-Sport approved club.

Whether you wish to improve your dancing, dance professionally or simply dance for fun, there



is sure to be a dance class perfect for you at Jus' Dance.

Great music excellent Teachers, good fun. Pay for full six week Term and receive 20% off total cost for all NEW students. Enrol online www.jusdance.com.au or Contact Jenny 0413430721.

50% CHEAPER THAN NORMAL BITUMEN
STOP THE DUST & MUD
SAVE THE ENVIRONMENT

Black Dog
 EARTHMOVING & Recycled Asphalt W.A.

All Aspects of Possi Track & Final Trim Work

Earthmoving
Drainage
Excavation Services & Bulk Earthworks

Recycled Asphalt is perfect for driveways, hard stands and is environmentally friendly.
 Recycled Asphalt can be spread cold sprayed and compacted to provide a firm driving or parking solution.

Call Cameron today for a FREE measure and quote.
0409 374 004

Email: cameron@blackdogearthmoving.com.au
www.blackdogearthmoving.com.au

Black Dog Earthmoving & Recycled Asphalt W.A.

Jus Dance MADDINGTON
 0413 430 721 - JENNY
info@jusdance.com.au
www.jusdance.com.au

Learn to DANCE TODAY!

KIDS CLASSES
ADULT CLASSES
SENIOR CLASSES

NEW CLASSES START 6TH MARCH 2023 ENROL NOW

1984 ALBANY HWY, MADDINGTON 6019

BALLROOM | LATIN | SALSA
ROCK N ROLL | JIVE & SWING
NEW VOGUE | WEDDING DANCE
PRIVATE LESSONS | COMPETITION
KIDS CLASSES

EVENING CLASSES Mon - Fri 7 - 9pm

NEW! BALLROOM, LATIN & NEW VOGUE SEQUENCE
 Thursday evenings 7 - 8.30pm

AFTERNOON TEA DANCE 17TH FEBRUARY \$12
 ALL WELCOME. Includes Tea, Coffee, Milo, Biscuits & 45 min Sequence Instruction. 1.30 - 3pm.

SOCIAL DANCE FRIDAY 24TH FEBRUARY \$12
 8PM - 11PM
 BYO Drinks. FREE Tea & Coffee. Floorshows & lots of dancing to all Rhythms. All welcome.

KIDSPORT APPROVED CLUB
 AGES 5-17 YRS
 MON - TUES 4.45 - 5.45pm.

NEW CLASSES STARTING ENROL NOW!
NO PARTNER REQUIRED
 Class range from Beginners to Intermediate.

Jus Dance KALAMUNDA
TUESDAYS 7-8.30PM
 ST BARNABAS CHURCH HALL,
 40 RAILWAY RD, KALAMUNDA
 Check our class timetable
www.jusdance.com.au



Great Atmosphere, Great Food, Family Friendly

GROVE Bar and Grill situated in Wattle Grove has gained a reputation for its quality cuisine and friendly relaxing atmosphere.

Wattle Grove has grown and developed quite a lot in the recent years, but Grove Bar and Grill is still the only licenced Hotel in the area.

Where the pub is open 7 days a week from 3.00pm to late, Monday to Thursday and 11.30am to late, Friday to Sunday, you can enjoy a great Bar menu with spe-

cial starting from \$8.50 Monday to Thursday and we pride ourselves on keeping the prices under \$20 and grab a print from \$7.50.

You can relax in the full table serviced area where our friendly staff can see to all your dining needs and is open daily from 5:00pm to 8:30pm Monday to Sunday and lunch is available from 12.00pm to 3.00pm Friday to Sunday.

We offer a Seniors discount

of 10% off your purchase Monday - Thursday, just mention this ad and show your Seniors card and the staff will look after your needs.

With six big screens to choose from you can be sure you will never miss a moment of the sporting action while the kids are also provided for, with a great outdoor fenced play area where Mum and Dad can sit back and enjoy a drink and a bite to eat while the kids can play to their hearts content.



Protect your smile @ Foothills Denture Clinic

AT Foothills Denture Clinic, denture repairs can be done while you wait, and denture relines are usually a same day service.

Father and daughter team Malcolm and Raynee McArthur are both dental prosthetists, licensed to make all dentures including part acrylic and metal dentures.

The clinic is a Medibank Private Members Choice Provider and an HBF Members Plus Provider.

Rebates are available from all other health funds and we also deal with Veterans Affairs and offer pensioner discounts.



Special arrangements can be made for country clients to reduce the number of visits.

The team are happy to discuss any difficulty or query you may have with your denture – free of charge – and offer a professional service at a reasonable price.

For a free quote call 9250 1733.

Creative Angels showcasing local works of inspiration

CREATIVE Angels Collective is a new and upcoming collective (UP MARKET) in the old Village of Midland, located at 15 Old Great Northern Highway.

We have a large variety of different Artisans within our walls, with so many different creative and inspired items to choose from.

We also have a cafe inside offering hot drinks, cakes, biscuits sandwiches, fruit salad and more on offer very soon.

Stall Holders: Swan Valley Blossoms, Sentimental Creations, Mishme's Novelty Pots, Crafty Weasel, The Sewing Box, Ye Old Lolle



Shoppe, Ms Muffit Designs, Incy Wincy Designs, Resin Shed, Dinky Dis Art, Tranquil Wellness Area and Cafe.

SMILE

@ Foothills Denture Clinic



FOOTHILLS DENTURE CLINIC

Phone **9250 1733**
for an appointment

SHOP 4, 16 THE AVENUE, MIDLAND
www.foothillsdenture.com.au

- ✓ New full dentures & partial dentures
- ✓ New implant retained over dentures
- ✓ Denture repairs & relines
- ✓ Sports mouthguards

DENTAL PROTHETISTS



MALCOLM J McARTHUR



RAYNEE McARTHUR

We also deal with Veterans' Affairs and all health funds through HICAPS | HICAPS | hbf | medibank



Creative Angels Collective

Open Tuesday to Saturday 9am to 5pm

Open Artisans Coffee & Cake

Creative Angels Collective is a new and upcoming collective in the old Village of Midland. We have a variety of different Artisans within our walls, with so many different Creative and inspired items to choose from.

Mishme's Novelty Pots



Ph: Donna 0435 039 948

15 Old Grt Northern Hwy Midland
www.creativeangelscollective.com



GREAT PLACE TO MEET • GREAT PRICES • GREAT ATMOSPHERE



Grove

BAR & GRILL

SENIORS DISCOUNT

Mention this ad, show your Seniors Card and receive 10% OFF your purchase. MONDAY-THURSDAY 5.30pm to 8.30pm
**Specials Not Included*

PINTS \$7.50

MONDAY

Chicken Parmigiana \$15

Have it your way: Traditional with bacon and cheese
Hawaiian with bacon, pineapple and cheese
Tex Mex with spiced ground beef, cheese and jalapenos topped with sour cream

TUESDAY

Pizza Night \$10

Any pizza from our selection between 5.30 - 7.30pm

WEDNESDAY

Steak Night \$8.50

200 gram rump with choice of pepper, mushroom, creamy garlic sauce or red wine gravy
Add ons \$5 each - Garden salad, Seasonal veggies, Chips, Mash.

THURSDAY

Pasta Night \$15

Ask your wait person for tonight's selection.
Includes a middy of beer or a glass of house wine.





610 Welshpool Road East, Wattle Grove

9359 3499

STRATTON & ELLENBROOK



Summer Grilling time!

WE HAVE GREAT PRICES ON BBQ MEATS



Shop

LOCAL

& SAVE MORE Every DAY!

OPEN 7 DAYS - 7AM - 9PM

THURSDAY 16TH FEBRUARY UNTIL TUESDAY 21ST FEBRUARY 2023



BARBECUE PACKS
(SAUSAGES, STEAK & CHOPS)

\$12⁹⁹
kg



BEEF POCKET ROASTS

\$9⁹⁹
kg



BEEF TOPSIDE STEAK

\$14⁹⁹
kg



LAMB FOREQUARTER CHOPS BULK TRAYS

\$14⁹⁹
kg



CRUMBED BEEF SCHNITZEL

\$15⁹⁹
kg



PREMIUM BEEF MINCE

\$14⁹⁹
kg



PORK BONED AND ROLLED SHOULDER

\$7⁹⁹
kg



BEEF PORTERHOUSE STEAK BULK TRAYS

\$19⁹⁹
kg

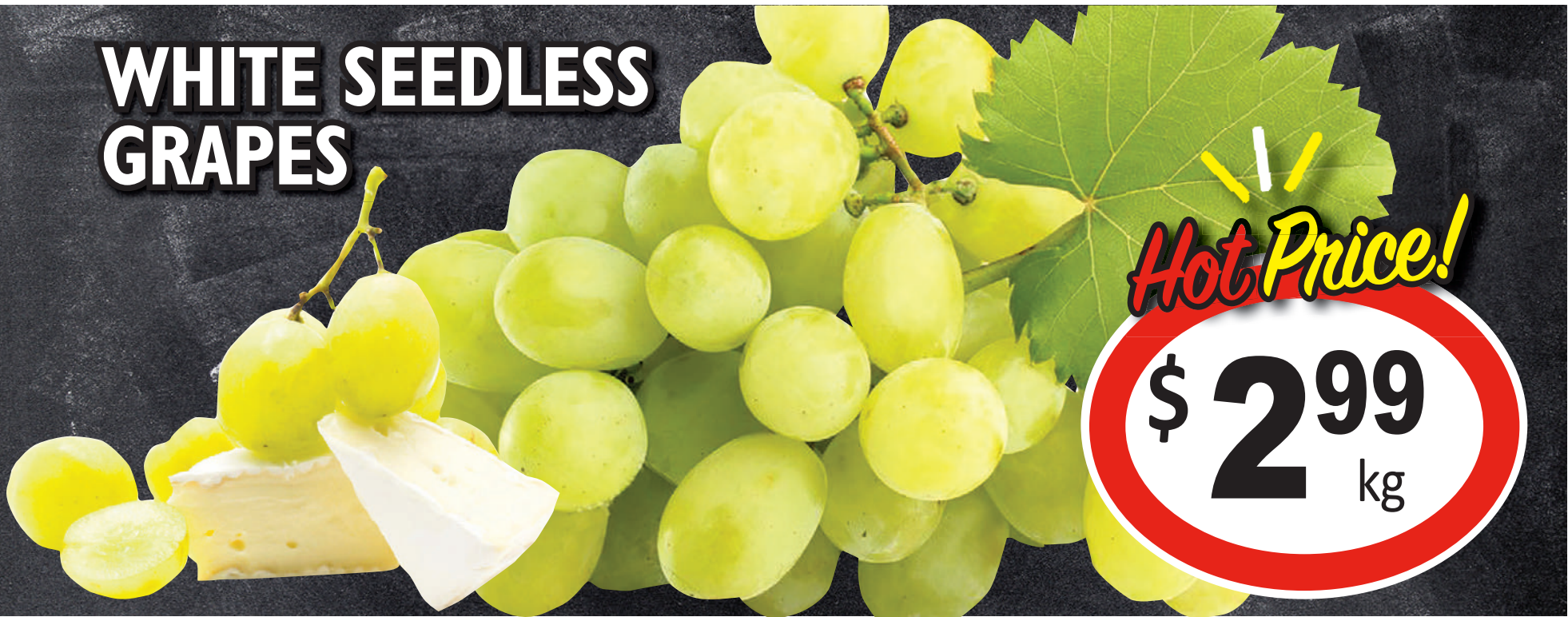
STRATTON & ELLENBROOK



TRADING HOURS:
OPEN 7 DAYS 7AM-9PM

Specials available from 16/2/23 until 21/2/23 or while stocks last. Retail quantities only. No trade supplied. Pictures are for illustration purposes only. Savings are off regular prices. Some regular prices have been reduced to ensure you receive the lowest competitive price. Therefore savings shown may differ from savings shown in store.

WHITE SEEDLESS GRAPES



Hot Price!

\$ 2.99
kg



WHOLE SEEDLESS WATERMELON

79c
kg



ROMA OR ROUND TOMATOES

\$ 1.99
kg



AUSTRALIAN LEMONS

\$ 2.99
kg



ALL CAPSICUMS

\$ 2.99
kg



ZUCCHINI

49c
ea



SWEET CORN

49c
ea



BEETROOT

\$ 1.99
kg



EGGPLANT OR KALE

79c
ea

Stratton IGA - Stratton Park Shopping Centre
Farrall Road, Stratton WA 6056 | 6270 0797

Like us on IGAStratton

Ellenbrook IGA 20 Sunray Cir, Ellenbrook WA 6069 | 9296 8902

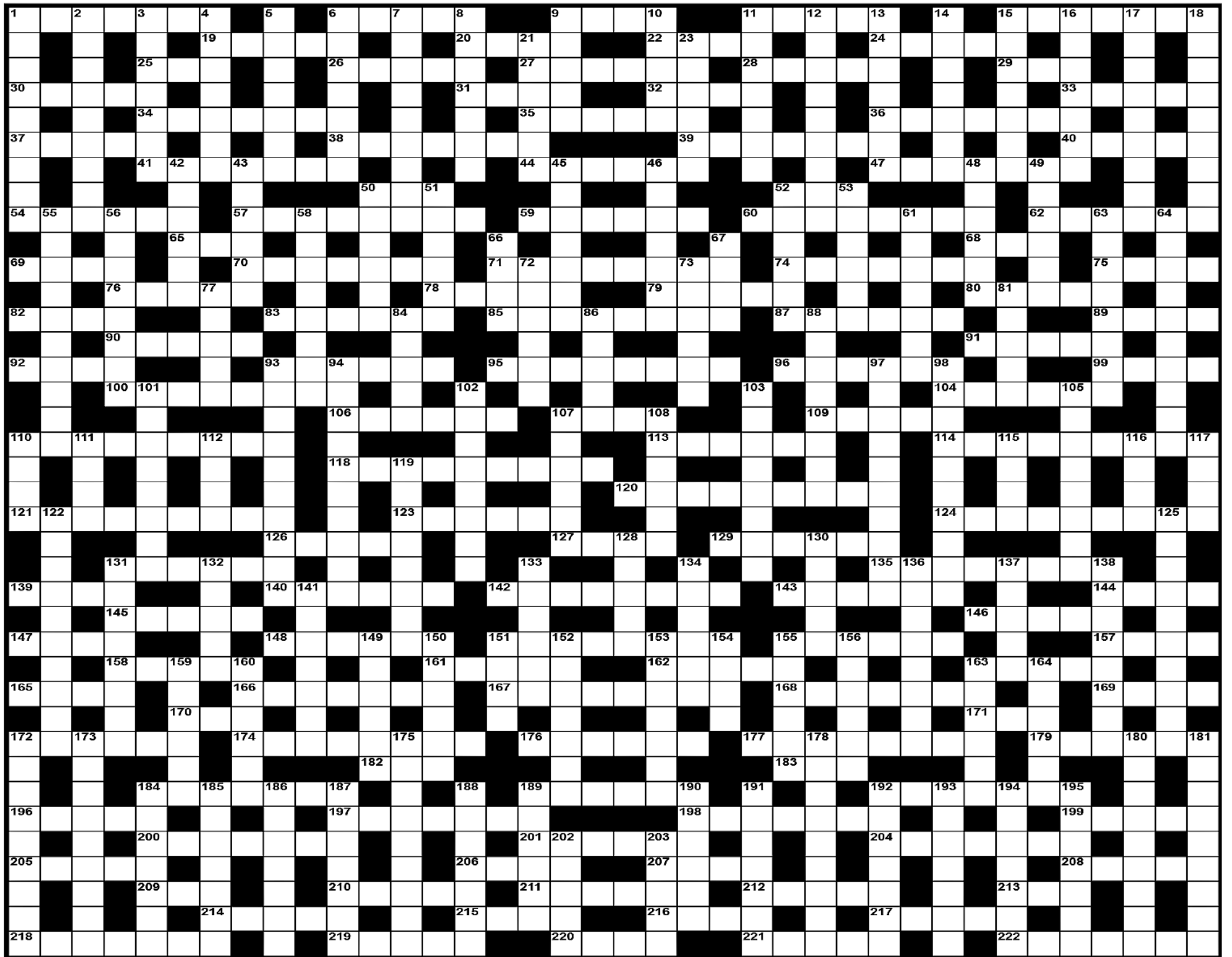
Like us on IGAEllenbrook

Specials available from 16/2/23 until 21/2/23 or while stocks last. Retail quantities only. No trade supplied. Pictures are for illustration purposes only. Savings are off regular prices. Some regular prices have been reduced to ensure you receive the lowest competitive price. Therefore savings shown may differ from savings shown in store.



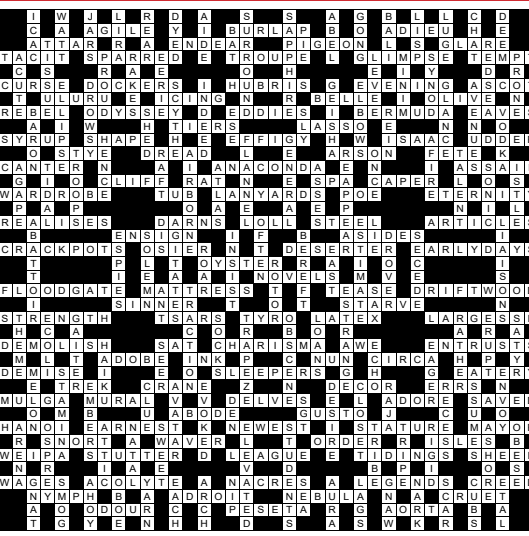
Mind Boggler Crossword

1104



- | | | | | | | | |
|------------------------------|------------------------------|---------------------------------|--------------------------------|-------------------------------|-----------------------------|-----------------------------|--|
| ACROSS | | | | DOWN | | | |
| 1 Famous Falls | 70 Wild asses | 145 Weasel-like mammal | 212 Roof repairer | 52 Mohair | 132 Claw | 173 High-principled | |
| 6 Sketch | 71 Adjustable | 146 Aphorism | 213 Aviator, Charles ... | 53 Sewing implement | 133 Money repaid | 175 Paper shop | |
| 9 Droops | 74 Directed | 147 Successful Australian movie | 214 Expressive motion to music | 55 Accountant | 134 Fails to hit | 178 Youngsters | |
| 11 Examine the books | 75 Curve | 148 Auction buyer | 215 Renowned model | 56 Extra hours | 136 Define precisely | 180 Notary (arch) | |
| 15 Disgrace | 76 Plant substance | 151 Obvious | 216 Labyrinth | 58 Candle maker | 137 Buck-jumping show | 181 Stuntman | |
| 19 Elk | 78 Distance walker | 155 Bell-shaped flowers | 217 Carries | 61 Arbour | 138 Long ditches | 184 Sexual arousal | |
| 20 Countenance | 79 More recent | 161 Topmost class | 218 Takes for granted | 63 Cushion for the head | 141 Stumbled | 185 Surpasses | |
| 22 First man | 80 Was completed | 162 Dog's lead | 219 Devil | 64 Renumeration | 142 Stumbled | 186 Stupid | |
| 24 Sports enclosure | 82 Parody | 163 Of sound waves | 220 Curved bones | 66 Forgery | 143 Serious plays | 187 Wrestles | |
| 25 PNG town | 83 Ukraine seaport | 165 Wait | 221 Writing tables | 67 Stitches | 144 Lower in price | 188 Irish girl | |
| 26 Walks back and forth | 85 Fencers | 166 Praise | 222 Plant support | 72 Position troops | 151 Bearing | 189 Stellar | |
| 27 Imperturbable | 87 Good server can ... (3,3) | 167 Weirdness | | 73 Refuses to consent to | 152 Apprehensive | 190 Former Spanish currency | |
| 28 More pleasant | 89 Sloping surface | 168 Practical person | | 77 Silly | 153 Make higher | 191 Lifted high | |
| 29 Crazy | 90 Perfect | 169 Cure | | 81 Small cuts | 154 Assignment | 192 Armed guards | |
| 30 Commerce | 91 Frighten | 170 For each | | 84 Revolving tray, lazy ... | 155 Palpitates | 193 Perfectionists | |
| 31 Location | 92 Paper quantity | 171 Intention | | 86 Endow with a quality | 156 Heavy | 194 Coat with gems | |
| 32 Atoll | 93 Enjoy | 172 European shrub | | 88 Most economical | 159 Petition | 195 Wise king | |
| 33 Speak lengthily | 95 Open car | 174 Weaponry | | 93 Tirelessly persistent | 160 Woman's knotted garment | 202 Speak of | |
| 34 Canberra NRL team | 96 Pleasant | 176 Of the back | | 94 Boring | 163 Distance runner | 203 Sides | |
| 35 Mountainous | 99 Stalk | 177 Servilely | | 97 Not intended | 164 Rain cloud | | |
| 36 Tympanic membrane | 100 And so on (2,6) | 179 Ordered around | | 98 Of language | 172 Paperbark | | |
| 37 Reclining | 104 Demand | 182 Observe | | 101 Transport vehicle station | | | |
| 38 Shoulder piece | 106 Cagebird | 183 Solar body | | 102 Man-made object | | | |
| 39 Toothed wheel | 107 Female birds | 184 Gracefully refined | | 103 Beautifying | | | |
| 40 Rod-shaped bacillus (1,4) | 109 Hickory-tree nut | 189 Dozing | | 105 Dieters | | | |
| 41 Longed for | 110 Beget offspring | 192 Articulate | | 107 Lodging house | | | |
| 44 Exertion | 113 Pure | 196 Shudder at | | 108 Parts of plays | | | |
| 47 Court sitting | 114 Gave pleasure | 197 Removes cork | | 110 Unsullied | | | |
| 50 Spigot | 118 Thief | 198 Runaway lovers | | 111 Large trees | | | |
| 52 Girl's name | 120 Withdraw a sword | 199 Oily fruit | | 112 Opposed to | | | |
| 54 Take in | 121 Necessary | 200 Beautiful flowers | | 115 Operatic song | | | |
| 57 Ill-omened | 123 Wall ornament | 201 Pieces of pasture | | 116 Up against | | | |
| 59 Welcome | 124 Wrongly blamed person | 204 Will supplement | | 117 Song for two | | | |
| 60 Below average (5,3) | 126 Go in | 205 Occurrence | | 119 Postponement | | | |
| 62 Anaesthetics | 127 Deprivation | 206 Ancient instrument | | 122 Likeness | | | |
| 65 Ernie | 129 Type of ring | 207 Slippery fishes | | 125 Emphasise | | | |
| 68 Small hotel | 131 Brightens | 208 Corpulent | | 128 Workers | | | |
| 69 Skeleton component | 135 Beekeeper | 209 Frozen water | | 130 Pacific island | | | |
| | 139 Travel permit | 210 A vassal | | 131 Access road | | | |
| | 140 Simmered | 211 On the water | | | | | |
| | 142 Word for word | | | | | | |
| | 143 Open to view | | | | | | |
| | 144 Shipping hazard | | | | | | |

Crossword Solution 1103 from 10 February, 2023



ARTS & ENTERTAINMENT



City of Swan Mayor David Lucas and Arron Yarran at the MA'OCHRE Art Gallery opening.

MA'OCHRE Gallery opens in Midland

GIFTED Nyiyaparli artist Arron Yarran opened her art gallery MA'OCHRE recently and is inviting the community to be part of her story.

The new gallery and studio on 12 Stafford Court in Midland holds a collection of works by Yarran, first unveiled on December 9 at MA'OCHRE's grand opening.

"I have been working slowly at this for over 12 months, painting and getting myself

set up and the support from the community was really good," she said.

"It feels good to have a place here in Midland."

Yarran is from the Warrajirri clan and has been given the name Warrajirri from the Nyiyaparli Elders after her great grandmothers.

Warrajirri-Yarra is her artist name and identity.

Her works are influenced by traumatic

lived experiences of family members and her personal journey connecting to country.

"My mum was part of the stolen generation and my grandmother was taken from her country in Roy Hill and put in Moore River," Yarran said.

"I tell the stories they tell me in my way.

"I create wildflower bowls because the minute you go onto country you see wildflowers for miles, going back to country is

a personal journey and it connects me to my grandmother."

Her works have been sold across the world and she has been commissioned by the University of China to produce digital content and nationally for one-of-a-kind pieces.

Yarran has also worked on art development programs delivering art, design, mentoring and support to disadvantaged and at-risk youth across Western Australia.

ECHO Sports

MGCC 3rd grade captain Ash Mucciarone takes six wickets

JOSHUA MCKENZIE

AS the regular season continues to near its conclusion, Midland Guildford Cricket Club has continued to produce positive results across a number of grades.

The 1st grade suffered a tough loss against Rockingham-Mandurah, while the 2nd grade almost managed a miraculous second innings victory after Austin Thomas scored 104 runs not out from 91 balls and Ben Skinner took eight wickets for the match.

Falling just short, the side settled for a 21 run first innings win.

The 3rd grade won by an innings and 18 runs against the same opposition after captain Ash Mucciarone took six wickets for 20 runs off 20.5 overs and Hayden Collins scored 82 runs from 126 balls.

The 4th grade also



Captain Ash Mucciarone took six wickets in the Midland Guildford Cricket Club 3rd grade side's win.

managed a victory by 18 runs after a well-rounded team effort with the notable standout being Jacob Heslop who took 6-48 from 22.3 overs.

The U17 won by 32

runs, while the U15 fell short losing by 66 runs.

The U14 and U13 both went down against Scarborough, but it was the female premier youth league who were

victorious over the weekend for four runs against Melville.

The male sides have just two rounds remaining before they begin finals.

Department of Primary Industries and Regional Development
Backyard Buddies
 Your monthly guide to pests, weeds & diseases

New wasp season in full swing!



European wasp shown on drinks, grapes, bacon and BBQ meats.

The annual hunt to detect and eradicate European wasps (*Vespula germanica*) from WA is underway!

Guard your BBQs, monitor your pet's food and check the insects you scoop from the pool! European wasps, we are looking for you!

The European wasp is a declared pest and must be reported. It has threatened to establish in WA since six nests were found and destroyed near Fremantle in 1977, but thanks to ongoing collaborative surveillance between the Department, community, local governments and business, WA has prevented their permanent establishment and spread.

Widely established across most of southern Australia, these highly adaptive scavengers hitchhike their way across the border and into WA each year. This season is the 45th year spent competing in a sophisticated game of 'hide and seek' against this highly adaptable and destructive pest.

Most detections are made in the Perth Metro but following regional detections in the past year DPIRD has set up surveillance traps in Geraldton, Dumbleyung, Goomalling,

Bunbury, Albany, and Eucla this year. If you live in any of these locations and would like to join the community team by adopting a surveillance trap, please search "European wasp Adopt-a-trap" online to sign up or give us a call.

Know what to look for

Unlike the widespread and similar looking black and yellow paper wasp, European wasps:

- **Scavenge** on human and pet food.
- **Feed on fruit** like grapes and stone fruit.
- **Nest underground** – nests can grow to the size of a basketball in a single season and have a single (golf ball sized) entrance hole.
- Have completely **black antennae**.
- Do **NOT** dangle their legs when flying.

For more information about the eradication program, how to identify wasps or how you can help further, see agric.wa.gov.au/wasps or contact our Pest and Disease Information Service.

Report suspect pests

MyPestGuide™ Reporter via app or online mypestguide.agric.wa.gov.au

Pest and Disease Information Service (08) 9368 3080 padis@dpirod.wa.gov.au

Pest and Disease Information Service (PaDIS)
padis@dpirod.wa.gov.au (08) 9368 3080
 Department of Primary Industries and Regional Development
 3 Baron-Hay Court, South Perth WA 6151

ECHO Trades & Services

9374 6666

classifieds@echo-news.com

BOOK ONLINE: www.echonepaper.com.au

Airconditioning & Refrigeration

ACR
Lic. No. AU05609

- Local Company
- Local Prices
- Reliable & Efficient
- Pensioner Discounts

For all your airconditioning & refrigeration service & installation
9454 9945

Bobcats

MIDLAND BOBCAT HIRE
BOBCATS, 8 & 12 TON TIPPERS, MINI EXCAVATORS

Free no obligation quotes and advice
Russell & Lynn Edwards
Owner/Operator
Russell: 0417 957 597
russlynn4@bigpond.com

BOBCAT - TRUCK EXCAVATOR ROCKBREAKER

- Bobcat works, Earthworks & Truck Hire
- Driveways - Removals / Prep / Construct
- Excavation / Trenches / Drainage / Soakwells
- Shed & Tank Pads / Rockbreaking & more ...

reliable Service
DAVE 0417 096 614
DW Cartage & Earthworks

Builder

PRECISE BUILD

Architectural Design and Drafting

Specialising in Residential New Build Designs
info@precisebuild.com.au **0439 262 091**

Carpentry

MORGAN CARPENTRY & MAINTENANCE SERVICES FREE QUOTE

ALL ASPECTS OF CARPENTRY & MAINTENANCE WORK
• 15yrs commercial & residential experience • Insured
• Fully qualified, professional & reliable • No call out fee
• Full police clearance • Pensioners discount
Call Kevin **0450 538 596**
www.morgancarpentry.com.au e: kdd.morgan@hotmail.com

CARPENTER/CABINET MAKER

Sash Window Repairs / Renovations, Kitchens, Laundries, Robes & Vanities made and fitted. Doors, Frames & Architraves. Skirting & Shelving. 40 years experience.
NO JOB TOO SMALL. Call Terry
0401 743 027 / 9295 0797
telcocarpentry@bigpond.com

KAMELOT CONSTRUCTIONS

Patios * Pergolas * Gazebos
Decking * Carports * Fencing
Quality carpentry at reasonable prices
Phone Trent **0429 374 168**
www.kamelotconstructions.com.au

Carpentry * Joinery * Cabinetmaking and Home Maintenance Services

- Doors * Decks * Skirting * Sash Windows
- Robes * Kitchens * Flatpacks
- Pergolas * Shelving * etc.

Pensioners Discount Fully Qualified
Free Quote Call Mal **0400 250 761**

Carpet Cleaning

SWAN JET CARPET CLEANING

STEAM CLEAN • Carpets • Lounges
• Ceramic Tiles • Grout Cleaning
Minimum Charge \$60.00
FREE QUOTES - ALL AREAS (PENSIONER DISCOUNT)
43 yrs experience. Work guaranteed.
Phone Peter **9377 6241, 0419 942 508**

Ceilings

CA INSTALLATIONS

- Ceilings & Walls
- All Facets of Ceiling Work
- Domestic & Commercial
- Office Partitioning

All Reno Work Local and Loyal
0409 953 369

CEILING & WALL RESTORATION

ALL SMALL JOBS
ALL REPAIRS & NEW ADDITIONS
23 YEARS EXPERIENCE
9295 2041 OR 0402 270 688

Concrete

CONCRETE

- Bobcat - Truck and Compaction
- From Prep to Completion

FREE Quotes All Areas
Call Zeljko
0417 902 301

B.C. CONCRETE DESIGN

Cracked Pea Gravel/Exposed Aggregate
Crossovers • Shed Floors • Drives
House Extensions • Patios
Bobcat & Truck
Call Anytime **0457 611 348**

TIGER CONCRETE

FREE QUOTES • NO MESS NO FUSS
Quality work, all types of concreting
Bobcat and Truck
Mike 0407 989 927

Driveways

WA ASPHALT

Red and Black Hotmix
Gravel Mix
Driveways, Crossovers, Repairs
Potholes, Kerbing
Established 25 years
0417 099 086

ALLIED BITUMEN Free quotes
Established 38 years
All work guaranteed
Fully insured

Asphalt driveways - Crossovers - Carparks - Potholes
Kerbing - Linemarking - Earthworks - Drainage - Trenches
0418 912 569 | 9454 4411
alliedbitumen.com.au

Electrical

RUSHTON ELECTRICAL
9291 4212 / 0408 904 169

For all your electrical needs

- RCD Fault finding / electrical repairs
- Data • Phone
- Air Con Install
- No job too small

Mrs Fixit! Female Electrical Contractor
For all your domestic & commercial electrical needs

- TV / ANTENNAS • LIGHTS • POWER POINTS • SAFETY SWITCHES / RCD'S • SMOKE DETECTORS • WHITE GOODS REPAIR & MAINTENANCE • HOT WATER SYSTEMS

MARDI GLADWELL 0430 035 345

Fencing

Julian Jones FENCING & GATES PTY LTD

- Colorbond Fencing & Gates
- All Stat, Pool & Security Fencing
- Insurance Work & Removal
- Automated Gates • Reliable Service

0408 288 622 #WARA1981

Glass

Helena Valley and Hills Glazing

"Intelligent Use of Glass"
Shower Screens & Mirrors • Glass Repairs
Double Glazing • Thermal/Acoustic Glass
Call Sean or Maureen
Tel 9299 6879 Mob 0427 474 252
e: helenavalleyglass@bigpond.com
www.helenavalleyglass.com.au / www.doubleglazingperth.com.au

Handyman

- Pool Fencing • Gutter Cleaning
- Furniture Repairs • Painting • Tiling & Paving
- Carpentry & Joinery • Property Maintenance
- High Pressure Cleaning

Almost anything - just ask!
Pensioners Discount Free Quote
Mal **0400 250 761**

Landscaping

SKL Garden Design

- Garden Rock Walls
- Re-cycled Brick Paving
- Old Gardens Re-Vamped
- Regular Garden Maintenance
- Wet Hire Mini Kanga Digger

Call Steve **0407 776 612**

Lawnmowing

A Cut Above The Rest LAWN & GARDEN CARE

- ★ Lawns Cut ★ Clippings Removed
- ★ Edges Trimmed ★ Yards Cleaned
- ★ Whippersnipping

FREE QUOTES
9453 9404
Mbl **041 791 3549**

Limestone

AL'S LIMESTONE

GOOD QUALITY RELIABLE WORK
Retaining Walls | Screen Walls
Steps | Paving | House Pads
Call now for the contractor that will make a difference
ALLAN 0400 793 886

Michael's Stonework Servicing All areas

Limestone & Coffee Rock
Small Retaining Walls, Steps, Pillars, Stone Pitching, Garden Beds
For a FREE quote & reliable service call:
0427 190 273

Maintenance

PP Maintenance ABN: 86 642 331 437

PAUL 0477 660 703
paul.percudani@outlook.com

- Painting (Interior & Exterior)
- General Repairs • Pressure Cleaning
- Restoration Home or Office (pre sale or lease)

Painting

WA COMPANY PAINTING

REPAINTS • INTERIOR • EXTERIOR
CALL TREV **0414 289 145**
WWW.PERTHPAINTING.COM
DISC. AVAILABLE PERTH PAINTING CONTRACTORS REG 6173

JIM OLSEN
Painter & Decorator
FREE QUOTES - QUALITY WORK
Reg# 3749
0430 339 118

Pest Control

MA'S PEST & WEED SERVICES

- Servicing the Hills and surround for 30 years
- Specialising in termite treatments and inspections

Free Quotes Sean: **0417 905 708**

Plastering

PLASTERING RENDERING SANDFINISH

ALL SMALL JOBS • RENOVATIONS
REPAIRS • NEW ADDITIONS
23 YEARS EXPERIENCE
Professional, Reliable & Friendly
Ph Paul **9295 2041 or 0402 270 688**
www.rossrendering.com

EASTERN HILLS PLASTERING
ABN 5445 1704397

All Aspects of Plastering - Concrete Skim
Coating - Acrylic Texture Finish - Renovations
30 YEARS EXPERIENCE FREE QUOTES
TONY **0406 675 211**
easternhillsplastering@outlook.com

Plumbing

Local Plumber
Same Day Service
Hot Water Expert

- Upfront Prices
- Pensioners Save
- Drains, Taps, Toilets
- Burst Pipes, Gas

Emergency Plumbing 24hrs
6118 6368
PL9956 *conditions apply

Plumbing

PLUM PLUMBING & GAS
PL8298 GF012882

- Renovations and Extensions
- Affordable hot water • Free Quotes
- All maintenance • Drain Blockages
- Professional Service • Fire roof sprinklers

Call Carl on **0411 325 059**

The Tap Doctor

FOR ALL PLUMBING & GAS

- Taps • Burst Pipes
- Toilets • Leak Detection
- Hot Water Systems • Blocked Drains

Call Today **1300 655 827**

Our Service Will Amaze You
PL6703 www.thetapdoctor.com GF10208

LOCAL PLUMBER PL9956

Same Day Service
Blocked Drain, Taps, Toilets
Burst Pipes, Hot Water *conditions apply
Same Day Emergencies 24hrs
9468 2581
NO CALL OUT* + SENIOR DISCOUNT
Your Best Local Plumber!

Hi I'm Local
In Your Area
Hot Water Expert

- ✓ Senior Discounts
- ✓ Upfront Pricing
- ✓ Fast Plumber
- ✓ Drains, Taps, Toilets

\$0 Call Out*
Plumbing Emergencies 24/7
6244 3226
*conditions apply PL9956

Plumbing & Gas

Greg THOMAS plumbing & gas
GF011016 PL7134

- All plumbing & gas maintenance • Septics
- Blocked drains & replacement
- Hot water replacement & repair

0458 149 555

Reticulation

Reticulation and Landscaping

- CABLE LOCATION SERVICE
- DESIGN
- INSTALLATION
- MAINTENANCE

36 years experience
• PUMPS • SALES • SERVICE • MAINTENANCE
email: paul@reticland.com.au
Call Paul on **0412 900 145 or 9454 5762**
or Aaron on **0429 515 222**

HILLS BORES & IRRIGATION

Perth Hills Family Business
EC 19272 ABN 92644026259

- Repairs
- Replacements
- Fault Finding
- Service

0449 690 056
info@hillsbores.com

Reticulation

Reticulation
0433 366 655

Roofing

AR Specialist Roofing

Solutions for all your roofing needs
including roof restoration, gutters, leaks, downpipes, sheeting, custom flashings, gutter cleaning, carpentry, house painting
PATIO BUILDING
Call Andrew
0410 669 184
arspecialistroofing@gmail.com

ROOF TILE REPAIRS

For all your Roof Tile Repairs
Contact David for a free quote on
0413 240 203 or 9255 4003
Specialising in: Leak Repairs • Gutter Clean
• Tiling • Re-ridging • Re-pointing

AMC ROOFING

Specialising in
All Tiled Roofing
New Roofs
Maintenance & Repairs
Free Quotes - Aaron Carter
Mob: **0417 930 817**

Roof Restoration

NOBLE ROOF RESTORATION

"THE ROOFING EXPERTS"

- All Roof Maintenance • High Pressure Cleaning
- Ridge Capping/Painting • Gutter & Downpipe Replacements • Deluxe/NuTech Roof Coatings

All Work Guaranteed!
FREE WHIRLYBIRD WITH EVERY ROOF COATING RESTORATION
FREE QUOTES Jason **0456 566 346**
www.nobleroofrestorationrepairs.com

Tiling

ALPHA TILING & RENOVATIONS

No Job Too Small
Call Peter for Free Quote
0438 909 275

- Complete Wall & Floor Tiling
- Experts In Shower Repair & Regrouting
- Bathroom Renovations

www.alphatile.com.au

SG ST SGSTILING

Wall Tiling
Floor Tiling
Bathroom Renovations

Steven Stitt QUALIFIED TILER
M **0438 929 679**
E sgstiling@hotmail.com

LAYRIGHT TILING

Professional local service
with 25+ years experience.
Floors & Walls, Indoor & Outdoor,
Full Bathroom Renovations & more ...
Scott Hermansen **0405 445 101**
layrighttilling@gmail.com

Tree Services

TLC Tree Services has merged with
Payne's Tree Services

FREE QUOTES AND ADVICE

- MULCHING • LAND CLEARING
- STUMP GRINDING
- TREE LOPPING

Call Clint on **0455 132 014**
paynestreeservices.com.au

HILLS TREE SOLUTIONS

For all your Treelopping and Stumpgrinding Needs

- Locally owned & operated • Call 24/7
- Fully Insured • Cheapest Prices Guaranteed
- Horizon Power Accredited • Servicing All Areas

CALL 9295 6511 OR 0414 438 610

ECHO Classifieds

9374 6666

classifieds@echo-news.com

BOOK ONLINE: www.echonewspaper.com.au

Driving School

AUSTRALASIAN DRIVING SCHOOL
L AUTOMATIC L
 FIRST HOUR FREE
0414 941 065

Electrician

LITL Electrical.
 All types of electrical work.
Jeff Overton 0483 858 603.

Employment

WELDER / BOILERMAKER

Intelsteel Engineering
 Jandakot WA 6164
 We are seeking a full time trade qualified Boilermaker/ First class Welder
 Experience 2-5 years required
 Send your resume accounts@intelsteel.com.au

"Lets keep local people in work"

To advertise your situations vacant call **9374 6666.**

Employment



Government of **Western Australia**
 Central Regional **TAFE**

Manager Industry Engagement

Northam (FTC up to 13 December 2024 with poss further term/permanency)
Level/Salary: Level 7, \$124,347- \$132,904 pa, PSCSAA

This role, through stakeholder engagement, identifies unmet, new and emerging training demand including the need for new training programs, different delivery methods and factors affecting access to training. This role builds upon and strengthens existing College industry advisory arrangements and uses information and input from stakeholders to inform the College's training programs to ensure these are aligned with industry and community needs and government priorities for training.

The role actively promotes opportunities for stakeholders to provide feedback and makes available information about training programs and services offered by the College.

To Access Detailed Information: Go to jobs.wa.gov.au and key in the Web Search No.40000778. Applicants are required to apply online.

For Specific Inquiries: Please contact Delia Pascua-McGlew, Director Training Services on 9622 6735 or email Delia.Pascua.McGlew@crtafe.wa.edu.au

Closing Date: Friday, 24 February 2023 at 4:00pm (WST). No Late Applications.

Employment



Detainee Services Officer - Northam, Western Australia

Are you looking for a career where you can make a difference every day?

Excellent earning potential
 Earn up to \$100,000 per year

Outstanding work/life balance
 Work a 7-day fortnight

Great career development opportunities
 Work with a global organisation

No previous experience required
 Comprehensive training provided

Immense satisfaction
 from impacting a better future

When you join the Serco Immigration team as a Detainee Services Officer, enjoy the immense satisfaction which comes in delivering better outcomes for people in our care, who are often at a critical time in their lives. Help us to provide a safe, secure and respectful environment - your support and understanding will make the real difference.



If you would love to make a difference every day, you can find out more and apply at sercocareers.com/immigration-careers

sercocareers.com

Join us. Make a difference every day.

Firewood Services

MOBILE LOG SPLITTING
 0435 931 570 / 0412 145 384.

Garage Sale

Sun 19 Feb. 8.30am-12.30pm. Plants, clothes, giftware, kitchenware etc. Eastleigh Place, Mount Helena



Gardening

Ian Mac's whipper snipping, chain sawing and weeding. Small tree lopping jobs. 0426 211 137.

Gutter Cleaning

Get your gutters clean. Call Thomas 0466 546 100. www.guttervac.com.au

Gutter cleaning & solar panel cleaning. Jason 0421 455 546.

Handyman

WILLIS BUILDING & MAINTENANCE SERVICE Specialising in all house maintenance, pergolas, decking, verandas, painting and carpentry. 0487 093 355.

M & H MAINTENANCE All indoor & outdoor work 0497 110 951.

Handyman / Gardener

HANDYMAN/ GARDENER

to assist in clean up and organisation of Workshop and general garden duties. Would suit a reasonably fit retiree who has a HR Licence. Duties include moving of equipment around workshop, deliveries, pickups from third parties driving small truck and general gardening duties. Remuneration and hours worked to be discussed and mutually agreed. **Call Peter 0408911001**



Health & Beauty

Healing Hands. Holistic treatment. Deep tissue massage, spiritual healing and back pain. Forrestfield. 0414 600 851

Mobbie Hairdresser. Phone Lorraine 0412 291 055

Help Wanted

Gardener Wanted. Once a month. Kalamunda central area. Small garden, no lawns. Check out auto retic. 0488 055 414.

ASK ABOUT OUR GREAT PRICES FOR CLASSIFIEDS

Lawn Mowing

Tony's Lawnmowing, Handyman & Firewood. Cheap rates. Midland & Surrounding Areas. 0431 831 948.

Maintenance

High pressure cleaning & roof repairs. Ph Markus 0433 958 025



Music

Piano Tuition by experienced qualified teacher. Beginners to Advanced. All ages; children and adults. Exams or Just for Fun. Ph Jennifer 0427 376 361

PIANO Accordion Lessons for beginners all ages. Sing along with your accordion. Txt/Ph Sam 0413.973.513



Painting

FOR A PROFESSIONAL JOB for a reasonable price, phone Andrew 0413 158 763

Local painter Paul. 0477 660 703 Free quote.

Internal, external & roof painting. Ph Markus 0433 958 025

Pets

CAT AND POSSUM TRAP for hire. H/Wycombe Hardware. Ph 9454 5374.



Plastering

SAM'S PLASTERWORK. All patch-ups to gyprock and brick walls. New Additions. Txt/Ph Sam 0413.973.513



Plumbing

MASTERS PLUMBINGAS All Plumbing & Gas work, Blockages, Hot water units, Leaks, Renovations, Burst pipes. 24/7 Emergency Service. NO CALL OUT FEE David: 0416 644 191. PL-9554 GF-011284.

Regrouting

Bathroom Regrouting. Call Andrew 0413 158 763



Solar Services

Solar Panel Cleaning with Anti Mould & Solar Wax Treatment. 0421 455 546.

Wanted to buy

Records, LP's or 45's collection + turntables + cassettes. 0424 489 910. Guildford.

Wellness Services

HYPNOSIS Clinical Hypnotherapist. Overcome Addictions. Past life regression. **1-22 February All Services HALF PRICE** www.matestone.com.au Location Chidlow 0490 245 515

Yoga

Gooseberry Hill YOGA

Monday 6pm-7.15pm
 Gooseberry Hill Hall, 42 Ledger Road
 60min Hatha based yoga class + 15min meditation
Ph Jeanene 0406 773 650

Continue on to Page 18 for Public Notices.

Growth. Opportunity. Reward



Seeking Educators to join us and make a difference every day.



Acacia Prison
 Woorlool, WA



Education Facilitator
 Literacy & Numeracy



Education Facilitator
 Art



Education Facilitator
 Fitness



Earn \$94,489 + Super

Transition into adult correctional education and join a vibrant team of creative and passionate teachers.

Acacia Prison is looking for experienced Literacy & Numeracy, Art and Fitness teachers to join us and make a difference every day. Students at Acacia Prison require a mix of pastoral care, alternative teaching methods and technical instruction to ensure their current educational pathway is rehabilitative.

Class sizes are a maximum of fifteen and there is no take-home after-hours work. Key responsibilities include training and assessing students in keeping with Registered Training Organisation Standards.

To find out more and apply visit sercocareers.com and or scan the QR code.



Education Facilitator
 Literacy and Numeracy
 272947



Education Facilitator
 Art
 82327



Education Facilitator
 Fitness
 276477

sercocareers.com

Join us. Make a difference every day.

Public Notices

**CITY OF SWAN
 Planning and Development
 (Local Planning Schemes)
 Regulations 2015**

**NOTICE OF ADOPTION OF
 LOCAL PLANNING POLICY**

POL-LP-1.17 HERITAGE

Notice is hereby given that the City of Swan Council at its Ordinary Meeting held on 8 February 2023 has adopted POL-LP-1.17 Heritage as a Local Planning Policy.

Pursuant to Deemed Provision 4 (3)(b) (ii) (5), Division 2, Part 2, Schedule 2 of the Planning and Development (Local Planning Schemes) Regulations 2015, this policy commenced operation from 8 February 2023.

The policy can be inspected at the City of Swan Administration Centre at No.2 Midland Square, Midland during business hours. The policy is also available on the City of Swan website www.swan.wa.gov.au/planningpolicies

Stephen Cain
 Chief Executive Officer



city of swan

www.swan.wa.gov.au

Public Notices

**CITY OF SWAN
 NOTICE OF PROPOSED
 LEASE OF LAND
 SECTION 3.58 OF LOCAL
 GOVERNMENT ACT 1995**

PROPERTY:
 Suites 19a & 19b, 8-12 Stafford Street Midland

LESSEE:
 The Trustee for Bernwen ATF Croft Trust trading as Child Wellbeing Centre (ABN 18 109 510 874)

ANNUAL RENTAL AMOUNT:
 \$6,975 plus GST and Outgoings per annum

VALUATION:
 \$9,250 plus GST and Outgoings per annum

PURPOSE:
 Commercial Office use

TERM:
 1 year, plus 1 x 1 year further term

Submissions, in writing, addressed to the undersigned, may be lodged on or before 3 March 2023.

Stephen Caine
 Chief Executive Officer
 City of Swan
 PO Box 196, Midland, 6936



city of swan

www.swan.wa.gov.au

Public Notices



The Law Reform Commission of Western Australia

Call for submissions – review of Western Australia’s sexual offence laws

The Attorney General, the Hon. John Quigley MLA, asked the Law Reform Commission of Western Australia (LRC) to review WA’s sexual offence laws.

The LRC is examining issues including the definition of consent, the defence of mistaken belief in consent, the directions given to juries in sexual offence trials, our substantive sexual offences and their maximum penalties.

The LRC is to provide advice and recommend any necessary reforms to the Attorney General.

The LRC has published Volumes 1 and 2 of a Discussion Paper and a Background Paper. The Discussion Paper outlines options and poses questions about changing our sexual offence laws. The LRC commissioned the Background Paper from experts to help the LRC and the public understand the issues in this area of law.

Volumes 1 and 2 of the Discussion Paper and the Background Paper are both available on the LRC’s website: www.lrc.justice.wa.gov.au

Individuals and organisations can provide a submission on one or more of the options and questions in the Discussion Paper and Background Paper. Submissions on Volume 1 close on 17 March 2023. Submissions on Volume 2 close on 6 April 2023. For information about the various ways to make a submission please visit www.lrc.justice.wa.gov.au

The Commission will hold consultations with reference groups and any organisation or person who wishes to contribute to law reform in this area. To register your interest in attending a consultation please email lrcwa@justice.wa.gov.au before 23 February 2023.

For more information visit www.lrc.justice.wa.gov.au

DOJ_13179

ANNUAL ELECTORS’ MEETING

In accordance with the provisions of the *Local Government Act 1995*, electors of the Shire are advised that the annual Electors’ Meeting will be held on Wednesday 8 March 2023, commencing at 6.30pm in the Civic Area at the Shire Administration Building, 7000 Great Eastern Highway, Mundaring.

The purpose of the meeting is to:

1. Adopt the 2021/22 Annual Report; and
2. Conduct General Business

A copy of the 2021/22 Annual Report is on the Annual Reports and Progress Reporting page on the Shire of Mundaring website. Hardcopies are available for inspection at the Mundaring Administration Centre and Mundaring and Boya Public Libraries.

Electors’ Meeting Guidelines and a form to submit questions and motions have been introduced for this year’s meeting to improve its effectiveness. These are both available on the Electors’ Meeting page on the Shire’s website.

Please note, priority at the meeting will be given to questions and motions received at least two business days prior to the meeting. They may be provided in any written format and additional forms may be completed as required. Additional questions and motions may also be presented at the meeting which will be considered after the written submissions, time permitting.

To submit a question or motion, please provide completed forms to shire@mundaring.wa.gov.au by **4pm, Monday 6 March 2023.**

This meeting will be audio recorded and livestreamed.

Jonathan Throssell
 Chief Executive Officer



**CITY OF SWAN
 REQUEST FOR CLOSURE OF A PUBLIC ROAD
 ADELAIDE STREET AND A PORTION OF
 WATERHALL ROAD, SOUTH GUILDFORD**

Notice is hereby given in accordance with section 58 of the *Land Administration Act 1997*, of receipt of an application seeking to permanently close the following portion of public road – Adelaide Street and a portion of Waterhall Road, South Guildford.

A plan showing the location of the road proposed to be closed can be inspected online at www.swan.wa.gov.au; at the City’s Administration Centre, Morrison Road, Midland; or at any of the City’s libraries, during office hours.

Prior to Council considering this matter, submissions from the public are sought. Anyone wishing to object, support or otherwise comment on the proposal may do so by lodging a written submission, addressed to the undersigned, City of Swan, PO Box 196, Midland, 6936, on or before Friday, 24 March 2023.

Stephen Cain
 Chief Executive Officer



city of swan

www.swan.wa.gov.au

**CITY OF SWAN
 NOTICE OF PROPOSED
 LEASE OF LAND
 SECTION 3.58 OF LOCAL
 GOVERNMENT ACT 1995**

PROPERTY:
 Kitchen 2, 8-12 Stafford St, Midland

LESSEE:
 Lyndsay Jane Clement (ABN 20 675 096 294) trading as Affectionary

RENTAL AMOUNT:
 \$11,725 plus GST per annum

VALUATION:
 \$11,725 plus GST per annum

PURPOSE:
 Food Preparation

TERM:
 1 Year plus one 1 Year option

Submissions, in writing, addressed to the undersigned, may be lodged on or before 3 March 2023.

Stephen Cain
 Chief Executive Officer
 City of Swan
 PO Box 196, Midland WA 6936



city of swan

www.swan.wa.gov.au

Local Real Estate



Modern country bliss

WITH a Hamptons aesthetic delivering luminous interiors, a central open plan with a panelled raked ceiling, wainscoting, and a wall of windows framing the natural beauty of a tree-lined creek, this home is waiting to be snapped up.

As the front door inset with a series of horizontal glass panels opens into a wide entry hall, this modern country home’s thoughtful design and orientation are immediately apparent.

A restrained and cohesive palette of materials and colours has produced timeless modern interiors that radiate a sense of tranquillity.

To one side of the central living area sits a stunning modern kitchen with stone benchtops, a 900mm oven and a farmhouse sink.

Brass tapware, hardware, and pendant light provide on-trend interest and contrast to this beautifully cohesive and practical space.

Bedrooms are arranged on either side of the central living zone.

In the principal suite, soft carpet with the pleasingly organic appear-

ance of sisal gently echoes the green used in the open plan.

Pocket doors conceal a walk-in robe and large, light-filled ensuite, where a double walk-in shower with an integrated bench provides resort-style pampering.

The three junior rooms feature the same quality carpet as the main suite and are fitted with built-in robes.

These generously proportioned rooms share the large family bathroom.

With scheme water connected and an ATU system to provide for grey water, the opportunity to create a stunning country garden is irresistible.

Sliding glass doors linking the living zone to the rear veranda lead to the ideal space for outdoor living and a pool, with the creek line providing a compelling focal point.

Address:
 32 Cook Road, Bakers Hill
Price: from \$699,000
Agency: Brookwood Realty.
 For more information contact Nigel Williams on 0417 988 680.

ECHO NEWSPAPER CONDITIONS OF ACCEPTANCE

When an individual or other legal entity (“the Customer”) requests Echo Newspaper (“Echo”) to place an advertisement in this Newspaper, they agree to be bound by the following terms and conditions:

1. Echo, at its sole discretion, may decline to publish any advertisement requested by a Customer. If Echo decides not to publish a particular advertisement, there is no obligation on Echo to disclose the reasons for its decision, and Echo will not be liable for any loss or damage occasioned to the Customer as a result of the decision.
2. Echo will not be liable for any loss or damage caused to a Customer as a result of delay or as a result of Echo failing to place a requested advertisement or publishing an advertisement containing an error or omission.
3. Echo may, at its sole discretion, decide to refund a Customer a portion of the cost of the advertisement if it forms the view that the error was not attributable to the Customer and the Customer notifies Echo of the error or omission before 5.00pm on the day the advertisement first appears in the Newspaper.
4. Complaints concerning the accuracy of any invoice must be notified to Echo within 30 days from the end of the month in which the advertisement was published, after which time the Customer forfeits any rights it may have had to challenge the invoices.
5. The Customer warrants that publication of the requested advertisement/s will not contravene any laws, whether statutory, equitable or otherwise, and agrees to wholly indemnify Echo (and its employees and agents) against all expenses, loss and damage arising directly or indirectly from the publication of the advertisement/s.

THE AGENCY



104 McDermott Road, Dumbarton

For Sale
From \$1,249,000

HEAVILY REDUCED - DON'T MISS OUT! Located in the beautiful Mountain Park Estate, this gorgeous property is situated less than 10 minutes from the Toodyay township, 20 minutes to Northam and approximately 75 minutes from the Perth CBD.

- Modern 5 bedroom and 2 bathroom home
- Open plan family/dining with chefs kitchen
- Sunken lounge and separate theatre room
- Large master suite with ensuite spa & BIRS
- Expansive indoor/outdoor AI fresco & Stunning Views

Viewing Times
Open By Private Appointment

5 2 6

19.6414ha



1045 Mayo Road, Wooroloo

For Sale
From \$925,000

Located in a quiet cul de sac adjacent to bridle trails, this beautiful 6.44 acre property epitomises blissfully serene country living. Surrounded on two sides by 10 acres of public open space, it is sure to appeal to the nature lover and the equine enthusiast alike.

- Double garage with office, plumbing/WC
- Netted/reticulated orchard, large shed
- Horse arena, yard & fenced paddock
- Sparkling salt pool and scheme water

Viewing Times
Sat 18th Feb
11:30am - 12:10pm

4 2 4

6.44c



11 Burke Street, Mount Helena

For Sale
From \$625,000

Looking to escape the hustle and bustle of suburbia to enjoy the peace and serenity of semi-rural living but not willing to compromise on easy access to all amenities? Then look no further as this sweet property is perfectly located only minutes from the Mount Helena township and an easy 10 minute drive to Mundaring.

- Ducted r/c air con/6.6 kW solar PV system
- Slow combustion & enclosed AI fresco
- Easy care gardens, large block with side access

Viewing Times
Sat 18th Feb
1:45pm - 2:25pm

4 2 2

2023m²



56 Falls Heights, Gidgegannup

For Sale
From \$575,000

With stunning valley and tree top views' this 9.73 acre block is situated less than 10 minutes from the Gidgegannup township and 45 minutes from the Perth airport and enjoys a quiet cul de sac location.

- 9.73 acres with quality bore, bore tank + large rainwater tank
- Existing powered pad for a residence
- Existing powered pad for a granny flat
- Mainly parkland-cleared useable land

Viewing Times
Contact Agent

3.8931ha



2795 Strettle Road, Mahogany Creek

For Sale
From \$849,000

Located directly across from the beautiful Strettle Road Reserve and only 5 minutes from the Mundaring town centre, this exquisitely renovated home is something special.

- High Quality Renovations & Extensions
- Sun room and cosy snug or sitting room
- Stunning kitchen with adjoining scullery
- Luxurious master with gorgeous ensuite
- High ceilings/timber windows and doors
- Sparkling f/g saltwater pool with spa jets
- Superb shed/studio with annexe parking

Viewing Times
Sun 19th Feb
10:30am - 11:15am

3 2 3

2023m²



1180 Berry Road, Gidgegannup

For Sale
Mid \$2 Mill Range

Looking to become the next proud owner of one of the finest semi-rural properties in the Perth Hills? Then look no further as this rare offering is sure to appeal to the most discerning of buyers.

- Expansive main home with 4 living areas
- Adjoining luxurious self contained 2nd home
- Quality high end & modern finish throughout
- Stunning views & landscaped gardens
- Undercover AI fresco area and salt water pool
- Extensive fruit orchard & veggie setup

Viewing Times
Open By Private Appointment

5 2 12-20

71.56ac



Kerrie-lee Marrapodi
0415 472 838
kerrie-leem@theagency.com.au



1300 AGENCY
theagency.com.au

Greg's Discount Drug Store Midland Superstore!

SALE ON NOW!

8 February - 22 February 2023



\$16⁹⁹
ea

Save \$8.66[^]

Hydralyte Effervescent Electrolyte Tablets
Apple Blackcurrant or Orange Flavoured
40 Tablets

Always read the label and follow the directions for use.



\$39⁹⁹
ea

Save \$24.96[^]

Optifast VLCD Shake
Strawberry, Banana or Coffee Flavour
12 x 53g Sachets

Always read the label and follow the directions for use. Optifast VLCD is for the dietary management of obesity and must be used under the supervision of a healthcare professional.

SUPER SAVERS

40% Off
Vital
Selected lines only*



\$42³²
ea

Save \$42.33[^]

Vital All-In-One Supplement Powder
300g

Always read the label and follow the directions for use.

SUPER SAVERS

40% Off
Pain Away & Neat Feet
Selected lines only*



\$16⁴⁹
ea

Save \$13.46[^]

Pain Away Forte+ Ultra Pro Joint & Muscle Pain Relief
Spray 100ml or
Cream 70g

Always read the label and follow the directions for use.



\$23⁹⁹
ea

Save \$10.96[^]

Hilo Forte or Hilo Fresh
Lubricating Eye Drops 10ml

Always read the label and follow the directions for use.

SUPER SAVERS

\$21⁹⁹
ea

Save \$14.51[^]

Nurofen For Children 5-12 Years
Orange or Strawberry
200ml

Always read the label and follow the directions for use.



Only available at Greg's Discount Drug Store Midland. Specials on sale from 8 February - 22 February, 2023. All items in this publication have been included in good faith on the basis that the goods described will be available at the time of sale and only while current stocks last. Failure by the supplier to deliver in accordance with the sample, description or all unintentional causes may result in some products being unavailable. We reserve the right to amend pricing due to manufacturer price rises or printed errors.
*Savings calculated based on the recommended retail price as provided by the supplier and not necessarily previous in-store price. *Excludes clearance and discontinued lines. Super Savers offers available until 6 March, 2023 while stocks last.



GREG'S DISCOUNT DRUG STORE MIDLAND
243 GREAT EASTERN HWY,
MIDLAND WA 6056

PH: 08 9274 1455 • E: gregs@gregsmidland.com.au

OPEN 7 DAYS: 7.30AM - 9PM



Discount Drug Stores
More than just low prices