

ECHO NEWS

SINCE 1985

Friday, January 19, 2024

Gutter and Solar Panel Cleaning Specialist



GUTTER
DON'T RISK A FALL GIVE US A CALL

BOOK ONLINE
0447 784 206

guttercleaningguyss.com.au

Scan me for more info
ECHO190124

Local Business Supporting Local People

VOL.42 NO.1847



Hills havoc after storm



Thousands of residents across the Wheatbelt and the hills have been left without power after a severe storm wreaked havoc throughout the hills and beyond. **PG 3**

ADVERTISEMENT

Your Representatives in the State Parliament



Matthew Hughes
Member for Kalamunda



Michelle Roberts
Member for Midland



Alanna Clohesy
Member for East Metro



Samantha Rowe
Member for East Metro



Lorna Harper
Member for East Metro


Authorised by Matthew Hughes Shop 9 Kalamunda Central Shopping Centre, Railway Road, Kalamunda

Come along this Sunday to
CHURCH
 The only thing missing is "U"
Grace Baptist Church
SERVICE TIMES
 SUNDAY SCHOOL: 9.30am
 FAMILY WORSHIP: 10.30am
 MIDWEEK PRAYER MEETING: 7.00pm
Meeting at: Brown Park Community Centre - Salisbury Rd, Swan View
 Pastor: **Graham Thomas**
 Ph: 0425 354 159
 gbcmidland.org.au
 Ellenbrook Service @3pm Woodlake Community Centre

Faith Baptist Church ELLENBROOK
 "Reaching People for Christ"
 Woodlake Community Centre Highpoint Blvd
 0425 354 159
 Sundays 3pm
 "Believe in the Lord Jesus Christ & thou shalt be saved." Acts 16:31

Save \$\$\$ with BTS Bargains at Macs4u
Refurbished Apple Computers
 • Build-to-order Unibody MacBooks with WebCams, DVD Burners and Up-To-Date Easy to use software - from \$330
 • 2011 MacBook Airs w/WebCams & software as above from \$400
 • Excellent 13 inch MacBook Pro 2019 in near new condition \$925
 • 15-inch MacBook Pro Quad-Core i7 in very good condition \$975
Other bargains are Refurbished Daily
Don't Break Your Budget !!
New Apple Computers Available with Studio19 Rental (2 Term or 6 Month minimum rental)
 • New MacBook Air M1- from \$237 per Term or \$79 per month
 • New MacBook Air M2 - from \$285 per Term or \$95 per month
 Data migration, software set-up, lessons on usage and Security are all available at

 Celebrating 20 years of retail in Midland
 269 Gt Eastern Hwy Midland WA 6056
 08 9274 7111 0410 501 441
 info@macs4u.com.au



WORK COMMENCED ON THE NEW SPORTS PAVILION AT ELLENBROOK CHRISTIAN COLLEGE, THE STATE GOVERNMENT HAS WORKED WITH THE COLLEGE SINCE THE START OF THE NEW MORLEY - ELLENBROOK LINE TO ENSURE MINIMAL DISRUPTION TO STUDENTS.

ECHO YOUR THOUGHTS Have your say: editorial@echo-news.com

Double crossed
 Dear Echo News,
 I have just found out (from chatting to what appeared to me as Metronet project officers) that when the Helena Street railway crossing is closed in early 2024 there will be no pedestrian crossing for anyone who lives on the other side of the rail line.
 So, anyone using

public transport - either bus or train - that lives or works over the other side of the station will either have to walk up to the new crossing at Cale Street and back-track or go back to the Morrison Road crossing to get home or to work.
 It looks like we who do live on the wrong side of the tracks are going to be majorly inconvenienced until the new Midland station opens sometime in

Thought for the day
 "Tough times never last, but tough people do."
 - Dr Robert Schuller

2025.
 It would be nice to have the pedestrian crossing still available until the new station is opened.
L Stinton Woodbridge

Heritage going
 Dear Echo News,
 A poem for readers:
 Absent minded walk to work, chill morning sun sparkling
 I'm not expecting anything, see an excavator in the carpark revving
 By where the supermarket once stood, in front of little old tin cottage last in the street, hang on!
 Now its asbestos front is torn, demolition man says to me
 What do you want old girl, what do you think old man?
 I want to see, pristine 130 year old pine liner boards, coloured lead lights over the front door
 Six inch floor boards, as they were on the day Kevin Mountain inherited it from his dad, his footy posters of the Swans still on the walls
 Handpainted floral bouquets
 The excavator is coming for him now, I feel its rumble through the earth
 Feel sad, precious relics so easily destroyed
 Old people forgotten, they cut the timber nailed in the walls polished the floors
 Loved its character, it was all they could afford
 They weren't perfect either as they walked to work, from the railway cottage to the workshops
 By now we should know better, with the little cottage gone who are we?
 Past references our walk into the future
 Where we are where we've been
 Now on the back of the truck being taken to the tip
Cr J Catalano City of Swan

REGULAR FEATURES

Entertainment	11
Noticeboard	18
Trades	17
Classifieds	18
Sport	19
Real Estate	19

ADVERTISING FEATURE

FEATURE P12-13

The Echo reserves the right to edit letters for length, legal reasons or clarity. The opinions expressed do not necessarily reflect those of the Echo. All letters must contain the author's full name, address and phone number for verification purposes.

ECHO News
ADDRESS:
 Unit 4/9 The Avenue
 Midland WA 6056
Phone: 9374 6666
GENERAL MANAGER / EDITOR
 Peter W Lewis 9374 6605
 peter.lewis@echo-news.com
DISPLAY ADVERTISING
 sales@echo-news.com
 Belinda Lyne 9374 6607
 Karon McCracken 9374 6610
CLASSIFIEDS, TRADES & SERVICES ADVERTISING
 classifieds@echo-news.com
 9374 6666
EDITORIAL
 editorial@echo-news.com
 Anita McInnes 9374 6603
 Gera Kazakov 9374 6602
 Andrew Williams 9374 6601
PRODUCTION
 production@echo-news.com
 Jeanene Allen 9374 6613
 Liz Rowlands 9374 6613
ACCOUNTS
 accounts@echo-news.com
 Caprice Harries 9374 6604
OFFICE HOURS:
 Monday-Thursday:
 9.00am - 5pm
 Closed Friday
 Closed: Weekends & Public Holidays

CONSUMER PROTECTION
Refunds, returns, repairs and gift cards: know your rights
 With Commissioner for Consumer Protection Trish Blake
 What happens when you don't like the socks grandma gives you for Christmas? Or what if Santa delivers your little one a broken toy?
 Under the Australian Consumer Law (ACL), consumers have rights when it comes to gifts that are faulty, unsafe or not as described.
 Australian retailers must offer a remedy such as a refund, replacement or repair, even if the gift was on sale. If the problem is minor, a business can offer its choice of a remedy, but if the fault is major - you get to choose. You do not have to accept a credit note instead of a refund and no longer having the packaging is not a reason to refuse you a remedy.
 When it comes to making a claim on faulty gifts, proof of purchase is required. This can be a receipt (or photograph of), a credit or debit card statement, a lay-by agreement, a warranty card with details about the purchase or some combination of these which supports your claim.
 So long as you can reasonably demonstrate that you or the gift giver purchased an item, a business may be breaking the law if it denies your right to a refund, repair or replacement for an item that fails to meet a consumer guarantee.
 But what about those socks from Grandma? If a gift is not your preferred colour, is the wrong size, or you got the same gift twice, it's considered a "change of mind" and is not covered by the ACL. The business does not have to offer you any form of remedy, but if they choose to do so, it is out of their goodwill. For this reason, it is up to the business as to whether they will exchange it, offer a refund or provide store credit.
 It's important to know most gift cards and vouchers must have an expiry period of at least three years. This is the law. Gift vouchers are like cash - if you lose one, you can't claim a replacement, so keep cards in a secure place until you are ready to go shopping.
 Finally, if a gift failed to turn up in time for Christmas, you may be entitled to a remedy but it is best to contact the retailer to resolve the issue first before lodging a complaint with Consumer Protection.
 If issues can't be resolved with the retailer, then lodge a formal complaint on the Consumer Protection website. Enquiries can be made by email consumer@dmirs.wa.gov.au or by calling 1300 30 40 54.



Storm leaves thousands without power

Storm damage throughout the shires of Mundaring and York.

PETER W LEWIS
GERA KAZAKOV

EXTENSIVE storm damage has been blamed for delays in Western Powers restoration works across the hills and Wheatbelt.

The storm hit Tuesday afternoon, leaving 34,000 residents and businesses without power during the peak of the outage, according to Western Power.

By Wednesday evening, 16,000 homes and businesses were still powerless despite the hard work of Western Power crews who worked all through the night.

Western Power acting chief executive officer Jacqui Hall said crews were working as fast as they could to restore power within safety precautions, and as of Wednesday evening Western Power said full restoration would take a number of days.

"The dangerous storm conditions caused multiple faults across a large area of the network, with hundreds of hazards including numerous damaged poles and wires down from the Wheatbelt to the Perth Hills area," she said.

"We have also been working to repair damage elsewhere on the network with customers impacted by fire and lightning strikes without power from incidents over previous days.

"We are focusing our recovery on critical infrastructure first and then the customers who are most impacted."

Ms Hall said there are more than a 1000 damaged poles, over hundreds of kilometres of conductor damaged alongside seven transmission lines also being out of service.

Within the City of Kalamunda, Tuesday's storm left the Kalamunda library and visitor centre without power.

Kalamunda Waterpark was also closed during periods of lightning on Tuesday.

The storm impacted various locations across the Shire of Mundaring, one of the worst hit areas in the Perth Metropolitan area.

Shire President Paige McNeil

said the biggest concern was debris on the roads, and asked residents to take care when travelling on roads.

"Shire staff have been working hard to clear the debris on roads, but non-essential debris clean up from verges may take weeks," Ms McNeil said.

She said given the hot conditions, power outages, and lack of air-conditioning, it was a good reminder to look out for your neighbours – particularly if they were elderly.

The Coppin Road community recycling centre will be open for normal hours Thursday to Sunday and will also be accepting green waste on Thursday and Friday, while the Mathieson Road transfer station will be open for normal opening hours.

Ms McNeil said some roads were still closed due to fallen trees and power lines, and asked residents to refer to Western Power website for more information.

She said the shire had focused its works and services resources into the clean-up as a matter of priority.

"With the widespread outage of telecommunications this week, it highlights the importance of our need for action by the federal government of backup generators," she said.

Parts of the City of Swan were also impacted by the severe thunderstorm with the most affected suburb being Gidgegannup, where extreme winds blew trees onto local roads and residents have been experiencing power outages.

"Swan SES received five calls for assistance locally, with one property in Bullsbrook reporting significant damage. They have also been busy helping storm-affected residents in the shires of Chittering and Mundaring," City of Swan deputy mayor Ian Johnson said.

"The city received several direct reports of trees and debris requiring removal and city staff have been cleaning up local roads and verges."

Meanwhile, Shire of York



chief executive officer Chris Linnell said there were several trees down on roads and within parks throughout the shire, including lots of debris on the Great Southern Highway.

"Shire crews have been focusing on safety issues first and will continue working on the removal and clean-up of vegetation once completed," Mr Linnell said.

He said there had been no significant damage to shire assets that had been found at this stage.

"There were also a number of small lightning strikes that caused some isolated fires throughout the shire which have been contained," he said.

York residents lost power from 1.45pm Tuesday, January 16 with all businesses closed, including the IGA and hotels, from that time.

"This had had significant impacts on businesses, including the shire."

York continued to be without power until after lunchtime on Wednesday, January 17 when Western Power commenced restoring power to businesses and residents.

Western Power offers a \$120 service standard payment for outages lasting more than 12 hours and payment of successful claims will be made within 30 days to nominated bank accounts.

To make a claim go to www.westernpower.com.au/issues-enquiries/make-a-claim/extended-outage

Police called as wildlife rehabilitator evicted

ANITA McINNES

A WILDLIFE rehabilitator has been evicted from an unauthorised rescue centre in Henley Brook with allegations some of the animals found there were in a shocking condition.

WA Police said they were called about 9.30am on January 12 to a property on Starflower Road, by a court bailiff who had been tasked with evicting squatters from a disused house.

A police spokeswoman said the property was being used to run an unauthorised rescue centre for a wide variety of domestic and native wildlife.

"A number of animal welfare workers from various shelters and charities were in the process of dealing with hundreds of animals left at the property," she said.

"Hundreds of animals were being kept in disgusting conditions, many of which were injured and dying, dehydrated and emaciated.

"Some of the animals were endangered native species."

She said the house was also in a very bad condition, covered in animal faeces, with rodents and cockroaches everywhere.

"The house and sheds are not fit for human, or animal, habitation.

"Department of Biodiversity, Conservation and Attractions (DBCA) wildlife officers took control of the scene and coordinated with the various rescue organisations and vets to rehouse, treat and euthanise the animals as required.

"A woman in her 50s was arrested

and interviewed by police.

"Her firearm, licence and ammunition were seized.

"The woman was released pending further investigation."

City of Swan deputy mayor Ian Johnson said the city had been working with the property owners and tenants to stop the use of the premises as the property was not approved to be used as an animal establishment.

"City officers attended the property last Friday and impounded two dogs which were at the property without consent," he said.

"The dogs were taken to the city's animal management facility and have since been claimed by their owner."

When *Echo News* asked DBCA if the wildlife rehabilitator was the holder of a fauna possessing (other purposes) licence a spokeswoman said the department was aware of the Henley Brook incident but unable to provide any comment as it was an ongoing investigation and that DBCA did not comment on licence status.

DBCA's fact sheet on wildlife rehabilitation said a modified penalty of \$2500 by way of infringement or a penalty of between \$50,000 and \$500,000 depending on the status of the fauna and if the matter was taken to court may apply to possessing native fauna without a licence unless otherwise authorised.

Echo News also asked DBCA what powers it had to intervene if wildlife was not fed or housed in an acceptable standard and she said the Department of Primary Industries and Regional Development was custodian of the Animal Welfare Act 2002, which was enforced by the RSPCA.

SPLIT AIR
AND ELECTRICAL

**MITSUBISHI ELECTRIC
AP SERIES
WALL HUNG
SPLIT SYSTEMS**

**SUPPLIED & INSTALLED
FROM \$1730.00
INCLUDES GST**



MITSUBISHI
ELECTRIC

(08) 9250 8988

4/135 CLAYTON STREET,
BELLEVUE WA 6065

contact@airconservicecentre.com.au
www.airconservicecentre.com.au

Western Power fined \$80,000 for Wheatbelt fire

WESTERN Power was last month fined \$80,000 after pleading guilty to failing to ensure network safety in relation to the Wickpin-Narrogin bushfire in February 2022.

Perth Magistrates Court heard the bushfire on February 6, 2022 started when Western Power's high-voltage overhead electricity conductors clashed between two power poles in Wardering.

The resulting sparks ignited grass stubble and the fire spread across 18,000ha of bushland and farmland. The same powerline clashed another two times on February 11, 2022 before it was remediated later that day.

Besides burning thousands of hectares of farmland, the fire also damaged property and killed hundreds of animals.

WA's electrical safety regulator, Building and Energy, told the court its investigation found the distance between the power poles exceeded the prescribed limits. The separation between the conductors that clashed was also closer than the prescribed limits, causing a risk of arcing.

Western Power was charged under WA's Electricity (Network Safety) Regulations 2015 for failing to ensure, so far as reasonably practicable, that its network was maintained to ensure it was safe in the months leading up to the bushfire.

In addition to the fine, Western Power was ordered to pay \$1,719 in costs, noting the network operator was aware of issues with the powerline bay and had not carried out remediation, requiring just two days' work, prior to the fire.

Victim impact statements from property owners described the physical, emotional and financial effects of the incident including fighting the fire and handling deceased livestock.

WA's Director of Energy Safety, Saj Abdoolkhan, welcomed Western Power's guilty plea and acknowledged its improvement actions since the bushfire.

"This was a damaging and stressful incident for the affected land owners, many of whom are still dealing with the aftermath," Mr Abdoolkhan said.



The newly opened playground at Lake Leschenaultia

All Aboard! Heritage playground open

YOUNG people and their families are now able to enjoy the newly opened railway heritage inspired playground at Lake Leschenaultia in Chidlow.

The playground, situated on the east side of the lake, was inspired by the lake's history as a railway reservoir to supply water for the steam locomotives stopping on the eastern railway at Chidlow's Well Station.

Designed and constructed by Nature Play Solutions, the playground boasts stylised railway elements such as a steam engine, carriages, train tunnel and a station platform.

A range of natural elements, shade trees, native plants and mulch soft fall were also used to complete the area.

Shire President Paige McNeil said the playground was the last component of the \$436,500 visitor improvement program for the lake.

"The visitor improvement project incorporates the creation of a swimming only area, vehicle counter, automated exit gate, electrical upgrades, and replacement shelter at the main beach," she said.

"We are very thankful to the federal government for their generous contribution for this project," she said.

"This is a fantastic addition which brings the history of the heritage railway to life for our younger community members. It's great to see so many families already enjoying the new playground this summer."

While the new playground has been relocated closer to the camping grounds, outside the park office, the location of the old playground has been converted to an accessible 160sqm covered outdoor area suitable for sheltering from the sun in summer or the rain in winter and has proved to be very popular already.

This project was funded equally by the shire and the federal Department of Industry, Science, Energy and Resources through round five of the building better regions fund.

The project also compliments further upgrades at the lake including the installation of the new shade shelter overlooking the beach area with two vibrant information boards featuring artwork by local artist Brenton See, development of a swimming only area, a vehicle counter system, an automated exit gate and a solar PV installation.

The project adds to other capital projects completed at the lake in the past two years including a new toilet block built on the west side of the lake, major refurbishment of the main campground ablutions and 130m post and rail safety fence along the dam wall.

Visitors to the lake are encouraged to check the fire danger ratings for Swan Inland North before visiting the lake via the BOM website or the Lake Leschenaultia Facebook page, as the lake may be closed on some extreme fire danger rating days due to local conditions.

YOUTH INFORMING STRATEGY

The Shire is developing a new Youth Informing Strategy and we want to better understand what is important to young people!

We want to hear from you if you are a parent or a caregiver of a young person or a young person aged 12 to 25 who live, study, work, volunteer or spend time in the shire.

Have your Say!
You are invited to share your thoughts in the below surveys:

Youth Survey



Parent Survey



Go in the draw to win EFTPOS VISA cards

For further information visit engage.mundaring.wa.gov.au

Survey closes Monday 29 January 2024.



Hayley contributes to social policy

HAYLEY Paku, a Bachelor of Arts student majoring in law and society and political science and international relations, recently put the skills and knowledge gained through her study to use supporting social policy development with the Shire of Mundaring.

Hayley contributed 100 hours working with the shire through a McCusker Centre for Citizenship internship, assisting with community resources and shire policies addressing homelessness, as well as drafting a diversity and inclusion strategy.

"The tasks I completed will contribute to the support provided to people affected by homelessness across the district, and hopefully, will also increase awareness of homelessness in the wider community," Hayley said.

"The internship opened my eyes to the unique and critical work done by local governments, as well as the challenges they face. More often than not, LGA's are not discussed when we look at

policy, law or politics – the focus lies heavily at the federal level, which can result in less understanding of local actions taken to address issues and build community."

Shire community engagement facilitator Karen White said that Hayley's internship efforts had far exceeded expectations.

"Hayley was dedicated to gaining the best possible outcome for the Shire of Mundaring and the local community," Ms White said.

"She developed a draft homelessness policy and a resource guide for use by shire staff and community members supporting people experiencing homelessness," she said.

Hayley said that the highlight of her internship was learning about the processes involved in policy development in a practical setting.

"This internship provided me with a wealth of new knowledge, as well as networking opportunities and a chance to develop my skills further.

"The experience equipped me



Hayley Paku

with a practical understanding of local government and the different levels involved in decision making, and the exposure to the office environment will definitely be useful.

"I gained far more than I anticipated, and I would 100 per cent encourage other students to consider opportunities like this."

More Mundaring bushfire mitigation funds

SHIRE of Mundaring has secured a second mitigation activity fund \$240,000 grant from the state government.

The grant will be used to conduct bushfire mitigation treatments in Chidlow, Mundaring, Mahogany Creek and Lake Leschenaultia between January and May 2024.

"The shire has recently completed a round of bushfire mitigation works across the shire thanks to the financial assistance from the first round of the state government's mitigation grants program," Shire President Paige McNeil said.

"This second round of funding will enable us to undertake more mitigation treatments on state land that we manage in Chidlow, Mundaring, Mahogany Creek and at the Lake."

The funding will assist in undertaking mitigation treatments such as, removing dead vegetation, pruning overhanging trees, clearing fire access ways, weed control and removal of non-native species to reduce fuel loads, and community engagement.

In the coming months the shire will carry out mitigation works by applying forestry mulching in Coothallie Road, Chidlow, Cockatoo Drive, Great Eastern Highway, Mundaring, Wattle Court Reserve, Mahogany Creek and Lake Leschenaultia (east).

Landowners and occupiers can also assist by ensuring that appropriate treatments are implemented on their own land, meeting the requirements outlined in the shire's firebreak and fuel load notice.

For assistance contact the shire's fire safety team on 9290 6696 or visit www.mundaring.wa.gov.au

Scott Street bridge completion delayed again



During construction, residents have experienced increased congestion and wait times. Picture: Andrew Williams

ANDREW WILLIAMS

COMPLETION of the Scott Street bridge in Helena Valley has been delayed again, with construction estimated to be finished by late February.

According to a Main Roads spokesperson the most recent delay in the construction of the upgraded bridge is the result of vehicle bans in the Shire of Mundaring.

“The contractor has made significant headway towards the completion of Scott Street bridge over the Christmas period, however due to harvest and vehicle movement bans imposed by the Shire of Mundaring when certain fire risk conditions are met, continued progress has been restricted,” they said.

“A number of these harvest and vehicle movement bans have been put in place since early January and are anticipated to continue over the coming weeks.

But the shire said between November 1 to January 15, harvest and vehicle movement bans were only imposed on four days. Three of those days were in November and just one in January.

“Due to the safety risks, these bans mean that our contractor cannot work on site,” the Main Roads spokesperson said.

“It is expected this project will be completed in February 2024, dependant on the ongoing bush fire risk.”

Construction on the Scott Street bridge, which crosses the Helena River, began last March and was originally set to be completed in October.

In *Scott Street bridge construction delays* (*Echo News*, October 27) that timeline was extended to January after heavy rains caused damage to the pre-existing bridge abutments during the first stage of construction.

The decision was made to build new retaining walls to stabilise the abutments, which extended construction time but will also reduce further maintenance in the future.

The upgrade has seen the replacement of the original timber structure with steel and concrete to allow more access options to the area in the event of bushfires. So far, the eastern carriage-way and the new pedestrian footpath have been completed and opened, while work on the western carriage-way is underway.

Roof collapses in Kalamunda café

GERA KAZAKOV

A HERITAGE listed café in Kalamunda is still open despite part of its roof collapsing.

The collapse occurred at Dome in Kalamunda last Friday morning and no injuries were reported.

The building is owned by the City of Kalamunda and leased to Dome. Mayor Margaret Thomas said the city has engaged a contractor to repair the roof.

Ms Thomas said the building was closed on Friday for the afternoon as an entire roof inspection was conducted which confirmed the repair works would

be isolated to one area.

“The city is working with the contractor and the tenant to ensure Dome remains open for trade while works are undertaken,” she said.

“We are committed to working swiftly and efficiently to minimise disruption to customers.

“We appreciate the community’s understanding and cooperation during this process.”

The building which houses the café is on the state’s heritage register and was formerly the site of the Kalamunda police station.

Prior to this, it housed the local road

board, a precursor to the City of Kalamunda before the city relocated in 1978.

Dome café took over the building in 2012 and restored the building as well as refitting the building for café purposes, according to the heritage register.



We know you’ll love more room for the family.

We’re offering the choice of doubling the size of your alfresco or a third garage for free. That’s more space to entertain with family and friends OR more room for cars, caravan, storage or whatever you like.

Now is a great time to build so you can LIVE LARGE! You can add extra space to your favourite WA Country Builders home for FREE. Choose from our wide range of home designs, including our farmhouses.

Visit our Bullsbrook display, call 6141 9125 or go to wacountrybuilders.com.au/livelarge

+

BUILD NOW WITH CONFIDENCE
Ask about our peace-of-mind guarantees

COUNTRY BUILDERS
WA

MEMBER OF THE JWHGROUP

Pricing shown is Bullsbrook. Terms and Conditions apply. Pictures for illustration purposes only. Some home designs excluded. Not available with any other promotion, competition, discount or incentive. WA Country Builders reserves the right to amend or cancel this promotion at any time without notice, prior to the signing of a PPA. Limited time only. †† Terms and conditions apply to each Guarantee and differ in each region. Speak with a Design Consultant for details. BC11422

Extensive damage to disability support units

PETER W LEWIS

FIRE and Emergency Services were kept busy this week following a call just after midday on Wednesday regarding a structure fire at a group of five disability support units on Morrison Road, Midland.

It is believed the fire started in a courtyard between two of the units which caused extensive damage to one of the units where the occupant was evacuated to temporary accommodation by the Department of Communities.

The roof of the unit had already begun to buckle before the fire was extinguished by the seven firefight-

ing units that attended from Midland, Welshpool, Osbourne Park and Kira.

The cause of the fire is still under investigation.

Next door neighbour Rebecca Hewson was alerted to the fire by staff from the post office across the road banging on her window.

"I went out the back and saw flames coming over the back fence and said 'Oh God'. I was particularly worried because of all the rubbish and clutter that was in the back yard," she said.

"The five units are all occupied by disability support pensioners and all the residents were forced to leave while the fire was put out."



One of the destroyed gates is right next to the emu enclosure. Picture: Andrew Williams

Kanyana damaged during police chase

ANDREW WILLIAMS

A HILLS wildlife rehabilitation centre has reached its funding goal after an inter-suburb police chase resulted in property damage earlier this month.

Animals at the Kanyana wildlife rehabilitation centre in Lesmurdie were disturbed early in the morning on Friday, January 5, when a car fleeing police crashed through the security gate of its resident animal enclosure.

The incident occurred at about 7.30am, after police spotted an allegedly stolen Toyota Prado driving northbound on Albany Highway in Cannington half an hour earlier.

Officers attempted to stop the vehicle before it allegedly fled, resulting in a chase which travelled through Cannington, Beckenham, Maddington, Orange Grove and up into Lesmurdie.

Finding a dead end on Gilchrist Road, the car allegedly entered the Kanyana property, smashed through two gates, and exited into the Korung National Park before it travelled back to Maddington

where the occupants were finally arrested in an industrial area near Valencia way.

Kanyana hospital manager Tasha Rea said luckily no volunteers, nor animals kept in the enclosure were injured during the incident. Among the 60 resident animals is also a breeding colony of endangered bilbies.

"So, it was in a way very lucky. They actually missed all of our sheds and all of our resident animal enclosures. Otherwise, we would have been dealing with animal escapes as well," she said.

But the rehabilitation centre's resident big bird, Widgee the emu, did remain unsettled for much of the day.

The repairs to the gates and associated electric fencing was quoted at \$1900, at which point Kanyana posted to its Facebook and Instagram pages seeking donations.

According to Ms Rea it took just two days for Kanyana to reach the required amount of funding.

"It's just fantastic seeing that support with everyone jumping



on board straight away with no questions asked.

"We are really thankful of our community and our followers," Ms Rea said.

She said repairing the gates and the electric fencing was paramount for the safety of the animals in the enclosures.

"We really need to get it done as it is part of our security having those gates. We are on natural bushland, but we do have foxes and feral cats moving through, so what that does is actually prevents them from getting in."



Quick action by DFES prevented further damage to adjoining disability support units. Picture: Peter W Lewis

Unfinished Bassendean apartments to go

GERA KAZAKOV

MONTHS after losing their builders' registration, Fulfil The Dream's incomplete Bassendean apartments have been given demolition orders by the town.

The Town of Bassendean administration said the town has issued a building order to demolish the partially constructed development at 28 Scaddan Street, Bassendean due to concerns associated with the development.

"The order is subject to an appeal with the State Administrative Tribunal and until this process is resolved the town cannot provide any further information," a town spokesperson said.

The apartments were being built by FTD construction Pty Ltd (also known as Fulfil The Dream), who last September had the renewal of their builders' contractor registration refused by the Building Services Board.

A Department of Energy, Mines, Industry Regulation and Safety's Building and Energy division spokesperson said that FTD construction did not appeal the loss of their registration.

"As such, FTD Construction Pty Ltd is no longer a registered building contractor," they said.

The decision was made by the board after an investigation into FTD Construction in which the Building and Energy division was left unsatisfied that FTD had met the financial requirements for registration, or that the company had arrangements



The half-built apartments on Scaddan Street in Bassendean. Picture: Gera Kazakov

in place to ensure proficient management of the company and supervision of building services by FTD.

Fulfil The Dream's website states that construction of the Bassendean apartments is underway and due to be completed in February 2024.

The website states the value as \$2 million, with eight apartments planned for the site.

"The build consists of high ceilings, bulkheads in all rooms, marble staircases, double glazed windows and doors, and much more within all apartments.

"This will easily be one of the most luxurious listings in the neighbourhood," FTD's website states.

SHIRE OF MUNDARING

ACCESS & INCLUSION WORKING GROUP

CALL FOR MEMBER NOMINATIONS

Are you a passionate advocate for people who are experiencing access and inclusion barriers, with a key focus on building a truly accessible and inclusive community?

The Shire is calling upon individuals like you who are ready to shape the future of our community and make a real impact.

As a valued member of the Access and Inclusion Working Group, you will provide advice and recommendations to Shire staff in the delivery of the Shire's Access and Inclusion Informing Strategy outcomes.

Find out more and submit your nomination via our engagement portal engage.mundaring.wa.gov.au, or visit the Shire website and download a nomination form. Alternatively you can complete a hard copy nomination form available at the Shire Libraries, Administration Building, The Hub of the Hills and Brown Park Recreation Centre.

Nominations close

Monday 5 February 2024

7000 Great Eastern Highway, Mundaring

☎ 9290 6666 ✉ shire@mundaring.wa.gov.au

mundaring.wa.gov.au

JDAP approval overlooks groundwater issues

ANITA McINNES

A ROADHOUSE proposed for Lot 31 (1487) Neaves Road has been approved by the Metro Outer joint development assessment panel despite the majority of City of Swan councillors last month recommending JDAP reject the plan.

On Tuesday, January 16 the two City of Swan councillors on the Metro Outer JDAP – Charlie Zannino and Rod Henderson – voted for the 24hr roadhouse with only the JDAP third specialist member John Syme voting against it.

North Swan Land Conservation District Committee chair-

man Richard Janes, who attended the meeting said Mr Syme was very clear on his reasons – based on environmental concerns – for rejecting the proposal.

Mr Janes said the JDAP adopted all the conditions the city had put in the responsible authority report (RAR) presented to the council in December, which did not include responses from the Department of Biodiversity, Conservation and Attractions (DBCA) or the Department of Water and Environmental Regulation (DWER), which had both been given a deadline of January 3 to respond.

The RAR said the site was in a sewerage sensitive area, within 1km of significant wetlands and within 1km of groundwater dependant threatened and priority ecological communities.

“The proposed development is within the buffer of an occurrence of the critically endangered threatened ecological community ‘communities of Tumulus Springs’ which is located about 300m to the east,” the RAR said.

At the December meeting a Bullsbrook resident raised concerns about the threatened ecological community (TEC) and that there was a recommendation that a detailed water management plan be submitted, which had not been done.

She said her groundwater came directly from that area and as a resident she wanted to know that the ground water was going to be protected and that a water management plan was put in place.

The city’s statutory planning manager Phil Russell said they expected to receive advice back from the Department of Biodiversity, Conservation and Attractions (DBCA) on the water management issue and while it had not been available for the

report to the council the presiding member of the joint development assessment panel had requested the information be provided when it came in and it would be part of the reconsideration by the JDAP.

A letter from the DBCA – which did not appear in full in the RAR – to the City of Swan dated February 1, 2023 said further monitoring of the groundwater levels and quality between the proposal area and the TEC by the proponent was required to demonstrate the proposed development would not impact on the TEC.

“Given the current decrease in the superficial and underlying aquifer any local groundwater use has potential to further impact on the TEC,” the letter said.

A Planning Solutions letter included in the RAR said groundwater monitoring had been undertaken, which had established the highest groundwater levels are lower than initially presumed.

In order to provide additional supporting information for the application, Emerge were engaged to undertake groundwater monitoring for the application area to be able to establish the groundwater levels beneath the existing ground surface.

“Groundwater flow direction has been determined to be in a southerly direction, which would mean that the risk of groundwater any impacts (quality or levels) on the mound springs community at least 350m to the east of the application area is unlikely,” the Emerge report said.

“Not only are the mound springs community occurrences reasonably separated from the proposed use, but the groundwater flow is not moving in the direction of the mound springs community from the application area.”



The proposed roadhouse on Neaves Road will operate 24 hours a day.

Cloudy water no cause for concern

A SERIES of damaged water mains and low-pressure incidents throughout the hills and foothills, which may have left tap water cloudy or discoloured, is no cause for concern says a Water Corporation spokesperson.

“Following repairs or maintenance, water is sometimes flushed through pipes,” the spokesperson said.

“This may stir up harmless sediment or allow air to enter the system which can temporarily give water a cloudy or discoloured appearance.

“While unsightly, water remains safe to use as normal. If you experience discoloured water, run a garden tap closest to your water meter for two minutes, or until the water runs clear.”

The Water Corporation spokesperson said damaged water

mains were repaired in High Wycombe on January 11 and 12 and in Koongamia on January 15.

Water Corporation crews also responded to a report of low pressure in Lesmurdie on January 8, with repairs requiring a brief water supply isolation for around 20 customers.

They said crews were on site in 45 minutes for the High Wycombe and Koongamia incidents and apologised for any inconvenience caused.

“We would like to thank the residents for their patience and understanding while crews completed repairs,” they said.

If the cloudy or discoloured water issue persists, the spokesperson recommends contacting Water Corporation on 13 13 75.

Hawleys

SHOES AND MENSWEAR

Serving the Kalamunda Community since 1947

Back to School 2024

Clarks
Bonnie

Clarks
Indulge

Clarks
Descent

Clarks
Daytona

Clarks
Boston

Clarks
Infinity

BoBux
Quest

BoBux
Leap

BoBux
Brave

New Year! New Shoes!

With every school shoe purchase

20% OFF plus

an entry to win a set of APPLE AIR POD PRO!

A second entry and 20% off sport shoes purchased at same time.

Clarks
Award

Clarks
Hurricane

Clarks
Hurricane

Puma
Twitch

Puma
Twitch

Brooks
Adrenaline

New Balance
w680

Puma
Twitch

Brooks
Ghost

Shop 8/10 Barberry Square Shopping Centre, Barber Street, Kalamunda

Phone 9293 1357 | Email: hawleyskalamunda@gmail.com

Breaking ground on Ellenbrook sports pavilion



Rowan Joubert from Ellenbrook Christian College, Craig Wallace and Craig Amos from Castle Projects, Transport Minister Rita Saffioti, Gigi Thiele from Ellenbrook Christian College, Grame Cross from Swan Christian Education, Ian Rodgers and Leon Slattery from Parry and Rosenthal Architects, and Major Transport Infrastructure Delivery's Nigel Hunt.

PETER W LEWIS

WORK has commenced on the new sports pavilion at Ellenbrook Christian College, with Transport Minister Rita Saffioti visiting the project site on Monday to turn the first sod.

The new pavilion will include a kitchen, changerooms, toilets, undercover spectators' area and storage rooms, and incorporate the existing basketball courts.

The state government has worked closely with Ellenbrook Christian College since the Morley-Ellenbrook line's planning phase to ensure minimal disruption to students.

Works are progressing on the Morley-Ellenbrook line, with the project expected to be completed in late-2024.

The 21-kilometre line and five new stations will service Perth's north-eastern suburbs to support ex-

isting communities by improving transport connections and creating new communities through integrated station precincts.

Transport Minister Rita Saffioti said the Morley-Ellenbrook line continues to take shape out here in Ellenbrook, and it's so exciting for the community.

"We're really pleased to have provided this funding to Ellenbrook Christian College for this new pavilion, which means students will be able to enjoy sport and activities all year round.

"From the outset, we've had a really positive working relationship with the college, and we would once again like to thank the school and the extended community for their ongoing support for this once-in-a-generation Metronet project."

The state government provided \$2.8 million in funding towards the new pavilion on the Morley-Ellenbrook line project.

Ellenbrook line to feature Indigenous art



THE Morley-Ellenbrook line project has commissioned 12 local and Noongar artists to create 19 public art pieces across five new stations in the largest Metronet public art collection to date.

The artworks will reflect and celebrate the unique environment of each station, as well as Noongar culture and connection to Country, while supporting opportunities for emerging and established artists.

A series of graphically overlaid glass skylights will feature at each of the five stations.

Created by Whadjuk, Ballardong and Yamatji artist Marcia McGuire and award winning Australian designer Penelope Forlano, the works share and honour concepts of Aboriginal and non-Aboriginal beliefs and are unique to each station.

Metal arbour screens will welcome visitors and passengers to Ellenbrook Station representing it as a 'place of looking' for the Whadjuk Noongar people. The works feature the circle stump of the Balga (grass tree), gum tree leaves and peppermint trees – all linked to traditional smoking ceremonies.

Patterned screens, set to be located along sections of the platform, represent the movement of people through changing landscapes, paying respect to the natural environment, and acknowledging traditional custodianship of the Whadjuk Noongar people.

While a bright, bold mural will surround the station's electrical building, representing the Karla Nara Gynning Bidi (Ellenbrook train track).

Bidis represent the seasonal movements of animals and people. With a colour palette inspired by fire and landscape, the painting will feature the rainbow serpent from Aboriginal Dreamtime stories, Bennett Brook, native animals and plants and fire.

Whiteman Park station will feature an entry mural that will transform the walls around the station entrance with three giant wedge-tailed eagles in flight and abstract swamp and stout paperbark leaves and flowers. The iconic WA bird of prey is a na-

tive species of Whiteman Park.

The underpass mural has images emphasising the ecological and cultural importance of groundwater, and will brighten the Drumpellier Drive pedestrian underpass with representation of Bennett Brook stream, traditional Aboriginal pathways and Whiteman Park's native flora and fauna.

The Whiteman station will also have four unique arrival sculptural artworks to be positioned in pairs to reflect how Noongar people and families travelled together on Country in search of food and water sources.

The sculptures will be illuminated at night and the colours will reflect the importance of fire (kaarl) and water (kiep) with engravings on the figures telling stories from the past.

Two clusters of sculptural freshwater mussels will feature in landscaping around Whiteman station. The mussels are linked to the well-known nearby Mussel Pool and the Carter's Freshwater Mussel found in nearby wetlands.

Perforated screens will be located on the concourse of Malaga Station, with the circle at the centre representing Malaga as a place of trading, of many tools (digging sticks), accessories (bags, cloaks) and weapons (shields, spears) which were used for fishing, hunting, daily life and more.

The lines connecting to the inner circle represent the flow of incoming and outgoing trades, while the screens on the facade draw inspiration from the banksia trees around the station and surrounding Bennett Brook – reinforcing a sense of place and discovery.

To find out more about each piece and the artists go to www.metronet.wa.gov.au/projects/morley-ellenbrook-line#public-art



Concept drawings for the Morley-Ellenbrook line public art project.

KIMBO'S Fashions
MIDLAND & WILLETTON

Work & Play
Outfits

NOW ON SALE!

FIND THE PERFECT OUTFIT

GIFT VOUCHERS AVAILABLE

MIDLAND

9274 0429 | 1 Old Great Northern Hwy | OPEN 6 DAYS

WILLETTON

9259 1698 | Unit 2 / 11 Augusta Street | OPEN 6 DAYS

Like us on Facebook

Bushfire plan numbers still too low

PETER W LEWIS

FIRE and Emergency Services Commissioner Darren Klemm has warned that while attention to bushfire plans often spiked after major fires there was still too much complacency.

Mr Klemm is again appealing to the public to spend 15 minutes making a bushfire plan as their best defence against

unpredictable bushfires.

"Only 1.5 per cent of households have a recorded bushfire plan compared to 93 per cent of the State that is bushfire prone," he said.

"Firefighters have responded to 2706 bushfires since October, 38 per cent more than at this time last year, and with conditions not showing any signs of easing we want to see everyone prepared for a poten-

tial emergency in their area.

"More than 30 bushfires have hit emergency warning level since October and many of those were in the Perth metropolitan area. Use the My Bushfire Plan app or website to make those lifesaving decisions now."

If you haven't already got a plan go to www.mybushfireplan.wa.gov.au

Market could go up, or down, or stay the same, according to finance expert



'It's been a big year for numbers, with the usual trends going upwards, downwards and even sideways'
NORMAN FLAT



GOT 15 MINUTES TO BURN?

READING THIS ARTICLE WOULD HAVE COST YOU ABOUT 15 MINUTES.

Not using this time to create your bushfire plan instead could cost you so much more.

[My Bushfire Plan](#)



N
F
It'
wi
up
ev
equ
on
firs
afte
yea
an i
prof
have
stom
gree
inex
incre
a blo
a ch
the ra
latter
be se
D
wheth
margi
aligne
refusi
M
expert
excess
marke
subjec
import
In
surpris
local fi
precise
it was
As ex
predicte
as stabl
your ave
Fina
investme
on the e
office c
the news
as your
presentat
reunion.
Mark
again,
that the
Average
it went u
bit, then
insiders s
ending ro
instead o
you hear
fax machi
background.

It's been a big year for green numbers and less red ones. Reports indicate an
importance.
It's been a big year for grass, which experts anticipate will be green.

wards and
statistical
the bank
ents that
one, the
perienced
d growth
o have.
Previously
remained
plants at
als and
e been
onomic
waiting
thrilling
erPoint
family
e, once
phesied
Industrial
where
own a
Street
never-
e, but
terror,
nd of
n the
ment,
Doe
rmed
as if
nced
His
left
ound
why
anks
nce
as
out
with
bly
erly
ice.
our equally

Annual Meeting of Electors



In accordance with section 5.5 of the *Local Government Act 1995*, notice is given that the Annual Meeting of Electors will be held at:

**Ballajura Community College, Performing Arts Centre,
265 Illawarra Crescent South, Ballajura**

Monday, February 5, 2024, starting at 6pm and finishing at 9pm at the latest.

The business of the meeting will be:

1. Receiving of the Annual Report 2022/2023
2. General business.

To access the Annual Report and for further information on registering to attend and participate in the meeting, please visit www.swan.wa.gov.au/AME.

Please note that this meeting will be live streamed and video recorded. The recording will be made available on the Council's website after the meeting.

Stephen Cain
Chief Executive Officer



"I'm a straight forward bloke. Don't like fuss. Don't complicate my life. That's the way I live. So when I depart this world, I'm going the same way I lived it - No Frills, No Fuss" - Jack

Just Cremations 

Funeral Directors

www.justcremations.com.au

Freecall 1800 65 35 95

**17 Canning Rd, KALAMUNDA
20 Bonner Dr, MALAGA
401 Gt Eastern Hwy, REDCLIFFE
47 Pinjarra Rd, MANDURAH**

ECHO151021L



Swan Rotary president David Uhe, Rotary district governor Ineke Oliver, Karrinyup Rotary's Kay Durrant, Swan Valley Inner Wheel president Jan Howe and convenor Pauline Uhe.

Celebrating a century of service by women

ONE hundred years of community service by women worldwide was celebrated last week at a luncheon hosted by the Inner Wheel Club of Swan Valley.

The celebratory event was held at The Brook Bar and Bistro in Ellenbrook where president Jan Howe welcomed 50 members of Inner Wheel Clubs of Kalamunda, Scarborough, Wanneroo and Kwinana Rockingham Districts, as well as Rotary guests.

A toast to recognise the 100 years of the worldwide movement of Inner Wheel was proposed by Lorraine Reed, a long term member of the club.

Inner Wheel, an organisation for women supported by Rotary Clubs commenced in Manchester,

England, on January 10, 1924 and now has 108,000 members in almost 4000 clubs in 104 countries around the world.

The first club was chartered in Australia in 1931. Each club is independent, and provides social activities for women, whilst supporting many charities, both locally and overseas.

The Swan Valley club meets for lunch monthly with presentations by topical guest speakers.

Currently, the club supports the work of Days for Girls, Coin for Blood Research, Ascension Connection and Care Bags.

Ladies wanting to join Inner Wheel contact Swan Valley secretary Jan Champion on 0439 767 743.

eye on crime



Mount Observation fatal crash info sought

OFFICERS from the major crash investigation section are investigating an incident that occurred in Mount Observation, about 25km south west of York, on Thursday January 11.

About 10.10am, a white Isuzu truck driven by a 50-year-old male was travelling in a north-west direction on Helena Road, when it left the road and struck a tree.

The 50-year-old male driver received critical injuries and died at the scene.

Major Crash investigators are conducting an examination of the scene and are appealing for any witnesses to call Crime Stoppers on 1800 333 000 or report the information online at www.crimestopperswa.com.au.

Dash-cam or mobile phone vision relating to this crash can be uploaded directly to investigators via this link: <https://wapf.au.evidence.com/axon/community-request/public/fatalcrash-mountobservation>

Swan View man charged over road crash

ABOUT 3.55pm Sunday, January 14, police were called to a serious incident involving a white van and a pedestrian on Morrison Road, Swan View.

The female pedestrian received serious injuries in the incident and St John arrived at the scene to provide medical assistance to the woman.

The van had left the scene of the crash, however a description of the van was provided to police by a member of the public and Midland detectives intercepted the van near the intersec-

tion of Roe Highway and Toodyay Road.

The 61-year-old male driver from Swan View was taken into custody and has been charged following investigations into the incident.

He was charged with one count each of aggravated grievous bodily harm and criminal damage or destruction of property.

He appeared in the Midland Magistrates Court on Monday, January 15 where he was released on bail, with his next hearing to be held at the Midland Magistrates Court on February 12.

Police want anyone with information regarding the above incidents to call Crime Stoppers on 1800 333 000 or you can make a report online at www.crimestopperswa.com.au



\$3000 fine for dog left to suffer 'football-sized' tumor

A 29-year-old woman has been fined \$3000 after pleading guilty at the Midland Magistrates Court on Monday, January 15 to leaving her elderly Great Dane to suffer 'football-sized' tumours without treatment.

She was also banned from having pets for three years however Magistrate Gregory Benn ruled the offender could keep her current pets – two cats, a dog, and a tarantula.

The Midland Magistrates Court heard an RSPCA WA inspector responded to a cruelty complaint in relation to a dog at an address in Forrestfield in January 2022.

When she arrived, she found the dog, Brutus, lethargic and in poor condition with the outline of his ribs, hip bones, and the top of his skull visible.

The inspector also observed Brutus had a pungent smell and a large, hanging growth on the left side of his body which was around 15cm x 20cm in size.

The offender told the inspector 10-year-old Bru-

tus had 'rapidly deteriorated' in the last couple of months however she had not taken him to a vet or made a euthanasia appointment.

The inspector seized the dog. A subsequent veterinary examination found he was severely emaciated with severe muscle wastage and a body condition score of one out of five; was severely dehydrated; and had a large ulcerated and infected mass and two smaller masses on his abdomen.

The larger mass had evidence of maggot infestation. The vet believed Brutus was likely in a significant amount of pain and his quality of life was severely comprised to such an extent that humane euthanasia was highly recommended.

The offender agreed for Brutus to be surrendered to RSPCA WA and be euthanised. In sentencing, Magistrate Benn said Brutus's condition must have been plain to see for a number or weeks, if not months and euthanasia should have happened much earlier.

ARTS & ENTERTAINMENT

Career-switching hills comedian coming to Kalamunda

THE Kalamunda Hotel is gearing up to host Mundaring-based comedian Emma Krause for two shows in January as part of Fringe Festival.

With the first show kicking off at 6pm January 27, Ms Krause's hour-long show 40+Fabulous is about her career switch from teaching to comedy and the trials and tribulations that entailed – as well as the successes.

"My fears were huge. I had to talk at a school assembly once. I was sweaty and dizzy beforehand. My hands were shaking so badly, I couldn't even hold the microphone still," she said.

But since making the switch, Ms Krause said she has now found comedic success at 40 years old.

She said she was a 2019 finalist on Australia's Got Talent, has appeared in Oz Lotto commercials and has also toured the country as part of The Motherhood comedy trio.

"I didn't realise how comedy would transform so many areas of my life," she said.

"In the beginning, I just knew I wanted to try it, and it scared me.

"Seven years on, I have this confidence, resilience and strength I've gained because of it."

Ms Krause said the most fulfilling aspect of her career change has been performing for female audiences.

"There's just something so special about a night out with the girls," she

said.

"We all come to understand and appreciate each other a lot better."

She said due to demand she has added another show at Kalamunda Hotel on February 16, starting at 8.15pm, while tickets are almost sold out for the first January show.

For those unable to make the Kalamunda dates, Ms Krause will also play at the Balmoral Hotel in East Victoria Park, the Sail and Anchor in Fremantle and two venues in the Perth CBD: Ivy and Jack, and the Laugh Resort Comedy Club.

Tickets can be found online at fringe-world.com.au/whats_on/40-fabulous-emma-krause-fw2024



Emma Krause will perform January 27 and February 16 at the Kalamunda Hotel. Picture: Chayla Taylor

Summer gala soiree at Woodbridge House

THE beautiful National Trust's Woodbridge House will again play host to a summer gala soiree on Sunday January, 28 from 5pm to 7pm to raise funds for the Rotary Club of Freshwater Bay's many outstanding projects.

Again, there is a wonderful line up of Western Australia's incredible talent. Alessandro Pittorino is Musical Director, organist and MC with Lachlann Lawton, Chelsea Burns, Eimear Foley and Devon Lake, returning for the second year, as the main artists.

Rising stars are all WAAPA Graduates, James Pinneri, Sophie Hamer and Noah Humich.

Many of the artists have trained internationally, with Mr Pittorino the only Australian to graduate in Organ studies from the Juilliard School of Music in New York. Ms Foley trained on the other side of the city at New York University

in Music Theatre while husband and wife team Lachlann Lawton and Chelsea Burns have each been recipients of national awards.

The repertoire will be much loved light classical, along with popular music theatre, concluding with a bracket of Australiana favourites.

Emphasising the Australiana theme, the Freeze Frame Opera truck will again be used as a stage.

The concert is family-friendly, picnic style with BYO blankets, chairs (preferably low) food and drink, with abundant shade for all, and a coffee van on site who will also have some cold snacks for sale.

Woodbridge House is nestled between the Swan River, Guildford Grammar and Governor Stirling Senior High School where there is ample free parking.

Rotary is a service organisation which

raises funds for its many worthy projects in the community, internationally and with youth. It has a global focus of creating peace and building a better world, with its global theme for this year being 'Create Hope in the World'.

Woodbridge House is in Ford Street in Woodbridge and bookings can be made for the concert on <https://www.trybooking.com/CNXHF>.

Any queries can be made to Di Collins on mobile 0432 538 075 or email secretary@rotaryfreshwaterbay.org.au



Devon Lake (right) is returning for his second year to perform at the soiree.

Rising Indigenous rapper gets Juniper scholarship



FORMER Perth Hills resident Jett Bieundurry, a rapper who performs as Kayps, is the 2023 scholarship recipient of the \$10,000 Robert Juniper Award for the Arts.

Growing up in the hills, the former Helena College student's journey into the world of music commenced in his early years, nurtured by his mother Donna and father Clifton, a seasoned performer on international stages.

Kayps' passion for music ignited during his primary school years, with him much preferring to create music rather than doing his homework.

A testament to his dedication to creating music is in his strict daily regime, which started around the age of 12 – rising early each morning to lay down beats and pen some lyrics before heading to school, returning to his creative pursuits after school was finished.

His early dedication has seemingly set the stage for a lifelong journey in music, one that he is keen to embrace.

Kayps' musical versatility, steadfast commitment to artistic expression, and the thorough and thoughtful approach outlined in his project proposal impressed all the adjudicators.

While not mandatory according to the award criteria, the judges believed that his project had the potential to not only improve his personal skills but also create a ripple effect by enriching his community.

They unanimously selected him after an intense evaluation of an exceptional lineup of finalists.

Despite being only 18 years old, Kayps has a discography that spans multiple bodies of work, including a featured EP on prominent Spotify playlists in 2023. His 2021 album 'Beauty Among the Chaos' not only resonated with audiences but also earned the prestigious honour of gracing the cover of Apple Music HipHop.

The accolades continued as he secured the Indigenous Initiative Award from the Triple J Unearthed competition in 2021.

A finalist in the same competition that year, he maintained momentum by securing a spot in the national competition in 2022 and later that year Kayps took to the stage at the Nannup Music Festival, enthralling his audience.

In 2023 he embarked on the Mushroom Records First Nations pathway writers programme in Melbourne, showcasing not only his musical capabilities but also his commitment to nurturing emerging talent. During his school holidays, he volunteered to lead a songwriting and music production workshop for Indigenous young men at the Koya Foundation.

Beyond his musical achievements, he envisions inspiring First Nations youth nationwide and he is dedicated to being an active participant in making this happen.

"My purpose for creating music stems from my passion in want-

ing to inspire First Nations youth around our country in expressing themselves via the creative arts. In addition to extending my skillset and knowledge in both the creation and the production aspects of music, I also aim to be able to perform my music at festivals and venues across Australia which will help me to create connections in communities and with young people," Kayps said.

His multifaceted approach extends beyond music, with a commitment to developing skills in video production to complement his music. He knows that dynamic multimedia presentations will enhance his storytelling and help him to reach a wider audience.

His award application project centres around collaborating with videographer Joel Baker to create four videos of four songs that he aims to release later this summer.

Kayps' unwavering dedication to his skill development, and his ongoing social commitment to his community positions him as a rising force in the Australian music scene, ready to make a lasting impact with his upcoming release and into the future.

The awards are given out annually to young creative people under 35 with a strong association to the Shire of Mundaring to assist in young people taking their creative pursuits to somewhere they image it to be.

For further information go to www.robertjuniperawardforthearts.org



Indigenous rapper Kayps at the Juniper arts awards presentation night where he received a \$10,000 cheque.

ADVERTISING FEATURE *MAKING A* Difference

Looking After your Individual Needs @ Adelphi Living



ADELPHI Living has brand new homes opening in Midland for NDIS Supported Independent Living and Specialised Disability Accommodation.

Adelphi Living CEO, Howard Emery, advised that these beautiful new homes can each accommodate three (3) Participants, in single oversized bedrooms with private fully accessible bathrooms.

At Adelphi Living we take a "Person Centred Approach" to the supports and services with Participants having choice and control in their daily lives.

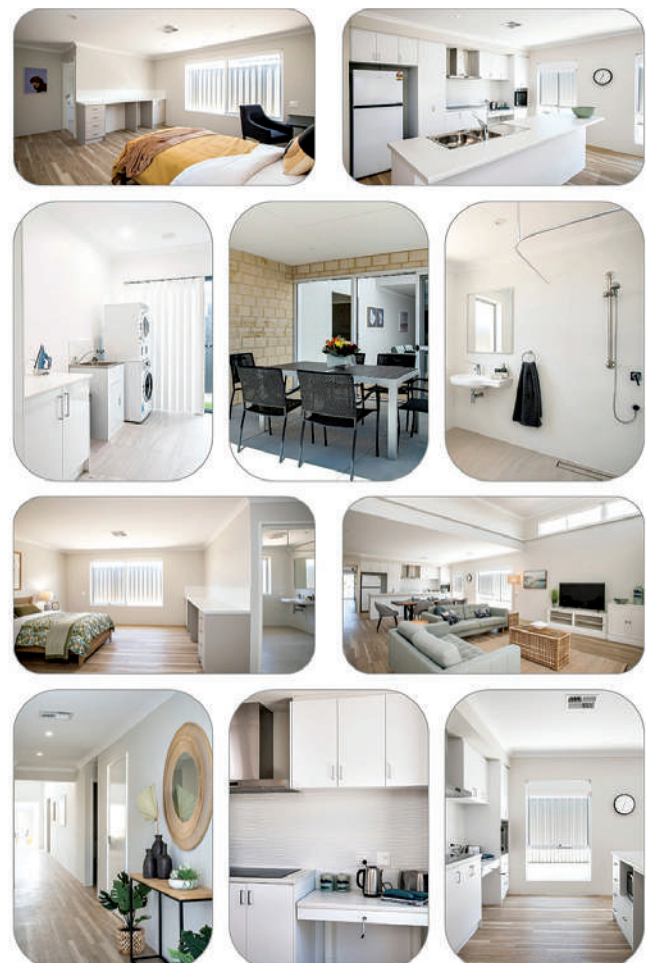
For Midland, we have chosen fully accessible and high physical support housing designs for these new homes.

Adelphi Living assesses the needs of each Participant and selects the staff that are required for each Participant's individual needs.

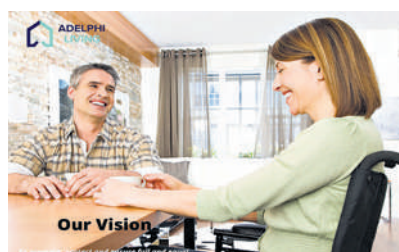
We have Registered & Enrolled Nurses and all our Support Workers have achieved a minimum of Certificate III in Individual Support, in either Aged, Disability, Community or Mental Health.

Mr Emery further explained that Adelphi Living is caring for several people who were previously living in aged care facilities, but now because they are under 65 years of age, they are eligible for NDIS funding and accommodation, which offers a more relaxed lifestyle and superior staffing levels.

For further details, please refer to the Adelphi Living website www.adelphiliving.com.au or contact them on (08) 6331 6888.



Looking After Your Special Needs



Adelphi is ready to assist Participants, their families and Support Coordinators in navigating the NDIS journey. Adelphi Living is a highly regarded Supported Independent Living care provider with access to new NDIS approved Specialist Disability Homes in the Midland location.

Please visit our website
www.adelphiliving.com.au
or call us on
6331 6888 for further assistance



ADVERTISING
FEATURE



Ready Set Grow with Edmund Rice College Bindoon

“Edmund Rice College Bindoon (ERC) is a school that believes in learning by doing and is a hands on, practical education specialist that provides education in a diverse range of pathways, developing capable, practical people ready for life’s challenges and opportunities beyond the College” said departing Edmund Rice Principal Mrs Marie Barton.

The College, based in Chittering Valley has state of the art facilities, specialist staff and 3300 hectares of working farmland to engage young minds and adventurous spirits. The College has a particular focus on preparing students for the trades sector that offer the most jobs in WA, including agriculture, construction, mechanics and nursing.

“While most schools are focused on preparing students for exams, our singular focus is to ensure they have fun in learning and we ignite that spark in each individual that helps them grow and flourish into capable, practical people, full of confidence and positivity.” stated Mrs Barton. “Our new “Ready Set Grow” message reinforces the approach we take at ERC and the benefits that students receive. You can check out our Ready Set Grow website for all the details about how the College can be a big part of shaping a student’s future” added Mrs Barton.

Edmund Rice College is a Catholic school built on a tradition inspired by the founder Blessed Edmund Rice, and aims to provide an education based on Christian values that respects the dignity of each individual and encourages the growth of initiative, responsibility, leadership and involvement, where

students grow to become capable, practical people, ready to thrive in the world ahead.

In saying thank you and farewell to the College Principal Mrs Marie Barton, the College also looks forward to welcoming its new Principal Mrs Amy Mosquito in January 2024, when she joins the staff and students for an exciting year ahead.

Enrolments now open for Day Students in 2024

We’d love to take you on a personal tour of our beautiful school and grounds, where you can see first-hand, the facilities we have and the students enjoy!

It’s a great opportunity to meet our dedicated and committed staff and talk to some of our students, who will share what it’s like to study and learn at Edmund Rice College Bindoon.

Day students and parents will also see how quick it is to get to the College with recently built roadways making the trip shorter and safer.

Enrolments are now open for Day Students to enter the College in 2024. If you need assistance with the enrolment process ERC can assist at any point along the way. Visit the new Ready Set Grow website at erc.wa.edu.au or call 08 9576 5500.

Book a tour or enrol today.



Question, Explore, Imagine and Create @ Barking Gecko

Gecko Ensembles are Barking Gecko Theatre’s weekly drama classes for children, where self-expression leads to self-confidence, as children stretch their imaginations in exciting directions.

Focussing on the learning that comes from engaging with drama processes, children explore some of life’s big questions while developing collaboration and communication skills and building resilience and empathy. They challenge themselves, listen to each other, learn new skills and most importantly, have fun!

Gecko Ensembles celebrate children’s diverse ideas, interests and imagination. Classes are facilitated by our Teaching Artists, who are accomplished industry professionals, passionate in helping young people discover their potential through drama.

Junior Geckos are held Saturday mornings at Midland Junction Arts Centre. Enrol now for Term 1 or find out more at barkinggecko.com.au



Our most effective classrooms aren't rooms



Enrolments now open for Day Students in 2024

While most schools are focused on preparing students for exams to enter universities, our singular focus is to ignite that spark in each individual that helps them grow and flourish.

The majority of job opportunities in WA are in agriculture, construction, mechanics and nursing. So Edmund Rice College (ERC) specialises in trade pathways with state-of-the-art facilities, specialist staff, and over 3,300 hectares of picturesque farmland!

Our practical, hands-on approach gives students the confidence and world ready skills to thrive.

ERC is a Year 7 to 12, co-educational college situated in a healthy rural environment in the Chittering Valley.

Visit erc.wa.edu.au or call (08) 9576 5500 to learn more.



we play we create we discover

GECKO ENSEMBLES

WEEKLY DRAMA CLASSES

JUNIOR GECKOS
(AGES 8 – 12 YEARS)

ENROL ONLINE & MORE INFO BARKINGGECKO.COM.AU

METRO LOCATIONS:
MIDLAND and KWINANA

KEY TO CREATIVITY PARTNER
Keystart.

TERM 1
ON SALE
NOW!

BARKING
GECKO
THEATRE



STRATTON & ELLENBROOK



Shop **LOCAL** & SAVE MORE *Every* DAY!

OPEN 7 DAYS - 7AM - 9PM

THURSDAY 18TH JANUARY 2024 UNTIL TUESDAY 23RD JANUARY 2024



PORK SHOULDER ROAST

\$6⁹⁹ kg



LAMB LOIN CHOPS BULK PACKS

\$14⁹⁹ kg



BEEF SCOTCH FILLET STEAK BULK PACKS

\$19⁹⁹ kg



BEEF BRISKET

\$12⁹⁹ kg



BEEF BLADE ROASTS

\$10⁹⁹ kg



PORK SHOULDER CHOPS

\$9⁹⁹ kg



CRUMBED BEEF SCHNITZEL

\$14⁹⁹ kg



CRUMBED CHICKEN SCHNITZEL

\$11⁹⁹ kg

STRATTON & ELLENBROOK



**TRADING HOURS:
OPEN 7 DAYS 7AM-9PM**

Specials available from 18/01/2024 until 23/01/2024 or while stocks last. Retail quantities only. No trade supplied. Pictures are for illustration purposes only. Savings are off regular prices. Some regular prices have been reduced to ensure you receive the lowest competitive price. Therefore savings shown may differ from savings shown in store.

ROCKMELONS



Hot Price!

99c
ea



WHOLE
SEEDLESS
WATERMELON

99c
kg



GREEN
SEEDLESS
GRAPES

\$ 3.99
kg



LOOSE ROUND
TOMATOES

\$ 1.99
kg



AVOCADOS

49c
ea



LEBANESE
CUCUMBERS

99c
kg



PLUMS

\$ 1.99
kg



COS
LETTUCE

99c
ea



RED
CAPSICUMS

\$ 2.99
kg

Stratton IGA - Stratton Park Shopping Centre

Farrall Road, Stratton WA 6056 | 6270 0797

Ellenbrook IGA 20 Sunray Cir, Ellenbrook WA 6069 | 9296 8902

Like us on  IGAStratton

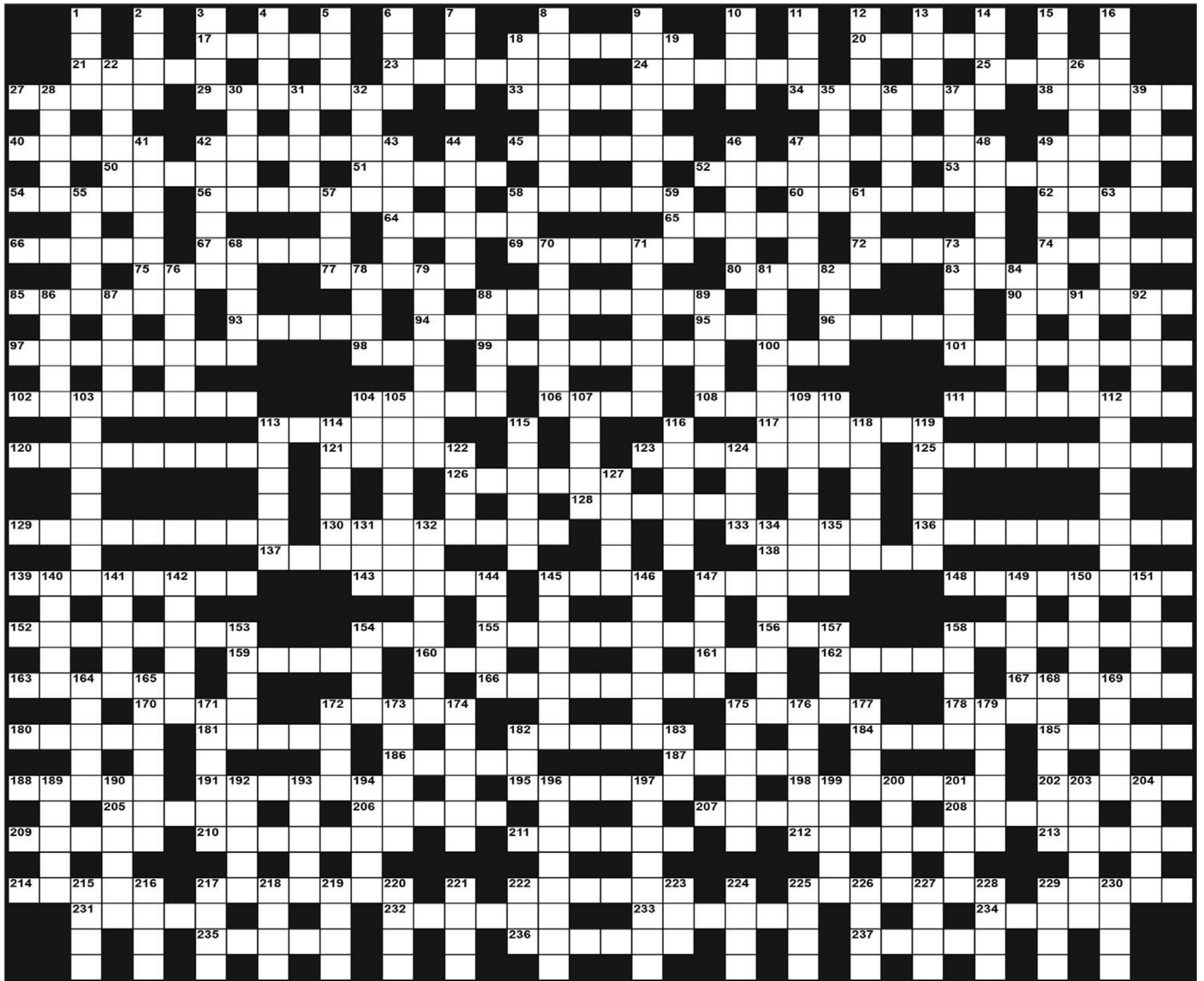
Like us on  IGAEllenbrook

Specials available from 18/01/2024 until 23/01/2024 or while stocks last. Retail quantities only. No trade supplied. Pictures are for illustration purposes only. Savings are off regular prices. Some regular prices have been reduced to ensure you receive the lowest competitive price. Therefore savings shown may differ from savings shown in store.



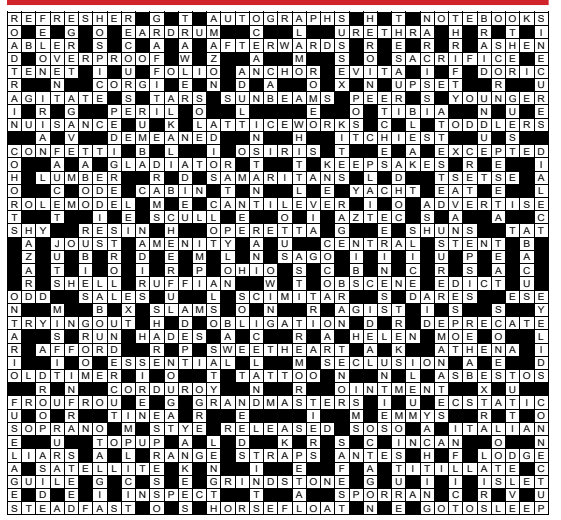
Mind Boggler Crossword

1150



- | | | | | | | | |
|----------------------------|---------------------------|------------------------------|---------------------------|-------------------------------|--------------------------------|----------------------------|---------------------|
| ACROSS | | 94 Rodent | 172 Hoist | 6 Stained | 81 Emerge again | 165 Enduring energy | 200 Nonsense (coll) |
| 17 Very nimble | 95 Mineral spring | 175 Style of furnishing | 6 An assistant | 82 Never again | 168 Gathers | 201 Unbending | |
| 18 Hessian | 96 A playful jump | 178 Blunders | 8 Encompass | 84 Skill | 169 Diplomat | 203 On land | |
| 20 Goodbye | 97 Place for clothes | 180 Aboriginal shield | 9 A blue gem | 86 Wide open | 171 Smouldering remains | 204 Plump | |
| 21 Oil of roses | 98 Bath | 181 Wall painting | 10 Cain's brother | 87 Of sea levels | 172 Sign | 215 Type of midge | |
| 23 Make beloved | 99 Shoulder cords | 182 Digs deep | 11 Percussion instrument | 88 Book of maps | 173 God-like appearance | 216 Pollutant | |
| 24 Courier bird | 100 American writer | 184 Cherish | 12 Holiday island | 89 Donkeys | 174 Called forth | 217 Nautical call | |
| 25 Dirty look | 101 Time without end | 185 Rescued | 13 Speech impediment | 91 Of sound waves | 175 Wish | 218 Woodwind instrument | |
| 27 Implied | 102 Understands | 186 Residence | 14 Racing toboggan | 92 Agave fibre | 176 Cabinet | 219 Woollen string | |
| 29 Boxed | 104 Mends clothes | 187 Vigour | 15 Converse | 103 Slaughterhouse | 177 Hindu title | 220 Singly | |
| 33 Company of entertainers | 106 Lie lazily | 188 Capital of Vietnam | 16 Suppose | 104 Romans' Pluto | 179 Playlunch | 221 Curve | |
| 34 Slight appearance | 108 Modified iron | 191 Sincerely zealous | 18 Cricket club | 105 Stirs | 182 Lair | 222 Tweak | |
| 38 Coax | 111 Things | 195 Latest | 19 Baked dish | 107 Many times | 183 NCO (abb) | 223 Ocean | |
| 40 Jinx | 113 Banner | 198 Moral greatness | 22 Thin paper | 109 Reckon | 189 Sports enclosure | 224 Subtle emanation | |
| 42 Wharfies | 117 Actor's undertones | 202 Civic head | 26 Waters off Egypt (3,3) | 110 Recline | 190 Hawk | 225 Wanes | |
| 45 Overbearing pride | 120 Eccentrics (coll) | 205 Harsh sound | 28 Crucial | 112 Love affairs | 192 Garret | 226 Chew on | |
| 47 Early night-time | 121 Willow | 206 Fluctuate | 30 Haughty | 113 Detects | 193 Relating to birth | 227 Police informer (coll) | |
| 49 Famous racecourse | 123 Absconder | 207 Command | 31 Graze | 114 Grave | 194 Confection | 228 Wound mark | |
| 50 Ayers Rock | 125 Too soon (5,4) | 208 Eyots | 32 Weird | 115 Demand | 196 Upgraded | 229 Young scouts | |
| 51 Cake covering | 126 Bivalve mollusc | 209 Old mining town | 35 Quay | 116 Deprived | 197 Pupils | 230 And others (L) (2,2) | |
| 52 Reigning beauty | 128 Story books | 210 Speak haltingly | 36 Short musical note | 118 Stockman | 199 A three-wheeled motorcycle | | |
| 53 Yellowish green | 129 Sluice | 211 Union | 37 Church meeting | 119 Withdraw formerly | | | |
| 54 Dissenter | 130 Sleeping pad | 212 News | 39 Prostrate | 122 Bellow | | | |
| 56 Greek epic poem | 133 Torment | 213 Wool producers | 41 Plane curve | 124 A direction | | | |
| 58 Whirling currents | 136 Washed-up timber | 214 Salaries | 42 Sleepy | 127 Helicopter blade | | | |
| 60 An imaginary triangle | 137 Transgressor | 217 Attendant | 43 Grass cutting tool | 131 Insect | | | |
| 62 Overhanging roof edges | 138 Be hungry | 222 Mother-of-pearls | 44 Truly | 132 Act of pulling | | | |
| 64 Layers | 139 Might | 225 Folk tales | 46 Japanese entertainer | 134 Alienate | | | |
| 65 Lariat | 143 Russian emperors | 229 Dogma | 47 Jostles | 135 Musical instrument (abb) | | | |
| 66 Sweet spread | 145 Neophyte | 231 Mythological maiden | 48 Look briefly | 140 Topic | | | |
| 67 Give form | 147 Rubber tree sap | 232 Skilful | 49 Thoroughfares | 141 Rod-shaped bacillus (1,4) | | | |
| 69 Roughly made figure | 148 Bestowal of gifts | 233 Star cluster | 55 Minor peer | 142 Shoe cover | | | |
| 72 ... Newton | 152 Wipe out | 234 Vinegar container | 57 Lean-to | 144 Footwear | | | |
| 74 Cow's mammary gland | 154 Was in session | 235 Smell | 58 Compass point | 145 Circus apparatus | | | |
| 75 Eye swelling | 155 Personality | 236 Former currency of Spain | 59 Cunning | 146 Repulsive | | | |
| 77 Fear | 158 Gives for safekeeping | 237 Main artery | 61 Harness part | 147 Mortgages | | | |
| 80 Incendiary | 159 Sun-dried brick | | 63 Russian drink | 149 Somewhat | | | |
| 83 Charity event | 160 Writing fluid | | 68 Therefore | 150 Emit lava | | | |
| 85 Easy gait | 161 Religious sister | | 70 A washer | 151 Woodland deity | | | |
| 88 Boa constrictor | 162 About in time | | 71 Widespread | 153 Japanese verse form | | | |
| 90 Set upon | 163 Death | | 73 Enthusiastic | 154 Soothsayer | | | |
| 93 Rock face | 166 Rail track supports | | 76 Bands | 157 Reverberate | | | |
| | 167 Cafe | | 78 Floating platform | 158 Keen | | | |
| | 170 Overland journey | | 79 Aloft | 164 Vine fruit | | | |

Crossword Solution 1149 from 22 December, 2023



ECHO Trades & Services

9374 6666
classifieds@echo-news.com
BOOK ONLINE: www.echonepaper.com.au

Air Conditioning

SPLIT AIR (08) 9250 8988
AND ELECTRICAL LIC. AU58425
MITSUBISHI ELECTRIC AP SERIES
WALL HUNG SPLIT SYSTEMS
SERVICE, REPAIR & INSTALLATIONS
4/135 CLAYTON STREET, BELLEVUE WA 6065
www.airconservicecentre.com.au

Airconditioning & Refrigeration

ACR
• Local Company
• Local Prices
Reliable & Efficient
Lic. No. AU05609 Pensioner Discounts
For all your airconditioning & refrigeration service & installation
9454 9945

Bobcats

MIDLAND BOBCAT HIRE
BOBCATS, 8 & 12 TON TIPPERS, MINI EXCAVATORS
Free no obligation quotes and advice
Russell & Lynn Edwards
Owner/Operator
Russell: 0417 957 597
russlynn4@bigpond.com

BOBCAT - TRUCK EXCAVATOR ROCKBREAKER
• Bobcat works, Earthworks & Truck Hire
• Driveways - Removals / Prep / Construct
• Excavation / Trenches / Drainage / Soakwells
• Shed & Tank Pads / Rockbreaking & more ...
Reliable Service
DAVE 0417 096 614
DW Cartage & Earthworks

Brickpaving

BRICKPAVING
- Big or Small Jobs
- Repairs Retaining Walls
- Quality Workmanship
- All Work Guaranteed
Ph Ian **0412 771 624**

Carpentry

MORGAN CARPENTRY & MAINTENANCE SERVICES
ALL ASPECTS OF CARPENTRY & MAINTENANCE WORK
• 15yrs commercial & residential experience • Insured
• Fully qualified, professional & reliable • No call out fee
• Full police clearance • Pensioners discount
Call Kevin **0450 538 596**
www.morgancarpentry.com.au e:kidd.morgan@hotmail.com

CARPENTER/CABINET MAKER
Sash Window Repairs / Renovations,
Kitchens, Laundries, Robes & Vanities made
and fitted. Doors, Frames & Architraves.
Skirting & Shelving. 40 years experience.
NO JOB TOO SMALL. Call Terry
0401 743 027 / 9295 0797
telcocarpentry@bigpond.com

Carpentry • Joinery • Cabinetmaking and Home Maintenance Services
• Doors • Decks • Skirting • Sash Windows
• Robes • Kitchens • Flatpacks
• Pergolas • Shelving • etc.
Pensioners Discount Fully Qualified
Free Quote Call Mal **0400 250 761**

Carpet Cleaning

SWAN JET CARPET CLEANING
STEAM CLEAN • Carpets • Rugs • Lounges
• Ceramic Tiles • Grout Cleaning
Minimum Charge \$60.00
FREE QUOTES - ALL AREAS
43 yrs experience. Work guaranteed.
Phone Peter **9377 6241, 0419 942 508**

Ceilings

CA INSTALLATIONS
• Ceilings & Walls • All Facets of Ceiling Work
• Domestic & Commercial • Office Partitioning
All Reno Work Local and Loyal
0409 953 369

Ceilings

CEILING & WALL RESTORATION
ALL SMALL JOBS
ALL REPAIRS & NEW ADDITIONS
23 YEARS EXPERIENCE
9295 2041 OR 0402 270 688

Concrete

B.C. CONCRETE DESIGN
Cracked Pea Gravel/Exposed Aggregate
Crossovers • Shed Floors • Drives
House Extensions • Patios
Bobcat & Truck
Call Anytime **0457 611 348**

SUNJICH'S CONCRETE
• Bobcat - Truck and Compaction
• From Prep to Completion
FREE Quotes All Areas
Call Zeljko
0417 902 301

TIGER CONCRETE
FREE QUOTES • NO MESS NO FUSS
Quality work, all types of concreting
Bobcat and Truck
Mike 0407 989 927

Driveways

ALLIED BITUMEN
Free quotes
Established 38 years
All work guaranteed
Fully insured
Asphalt driveways - Crossovers - Carparks - Potholes
Kerbing - Linemarking - Earthworks - Drainage - Trenches
0418 912 569 | 9454 4411
alliedbitumen.com.au

Electrical

RUSHTON ELECTRICAL
0408 904 169
For all your electrical needs
• RCD Fault finding / electrical repairs
• Data • Phone
• Air Con Install
• No job too small

Mrs Fixit!
Female Electrical Contractor
For all your domestic & commercial electrical needs
TV / ANTENNAS • LIGHTS • POWER POINTS • SAFETY SWITCHES / RCD'S • SMOKE DETECTORS • WHITE GOODS REPAIR & MAINTENANCE • HOT WATER SYSTEMS
MARDI GLADWELL 0430 035 345

Andrews Electrical Systems
Established 25 years • High Quality Guaranteed
Residential • Commercial • Industrial
• Electrical Installations
• Electrical Maintenance
• Air Conditioning
• Telephone and TV
• CCTV and Data
Call Andrew **0420 956 432**
Email: andrewsesperth@gmail.com

Fencing

Julian Jones FENCING & GATES PTY LTD
• Colorbond Fencing & Gates
• All Slat, Pool & Security Fencing
• Insurance Work & Removal
• Automated Gates • Reliable Service
0408 288 622 #WARA1981

To register ONLINE for your Trades & Services advertising... GO TO:
www.echonepaper.com.au

Gardening

All Areas
FULL BLOWN GARDEN MAINTENANCE
ABN: 77 592 171 029
✓ Rubbish Removal
✓ Dog Poop Removal
✓ Lawn Mowing
✓ Planting
✓ Weeding
✓ Pruning
✓ Hedging
✓ Yard clean ups
✓ Ride on mowing
✓ Pressure cleaning
✓ Bush fire ready clean ups
Fully Insured
FREE QUOTES
Police Cleared
Damien **0431 011 369**

Handyman

• Pool Fencing • Gutter Cleaning
• Furniture Repairs • Painting • Tiling & Paving
• Carpentry & Joinery • Property Maintenance
• High Pressure Cleaning
Almost anything - just ask!
Pensioners Discount Free Quote
Mal **0400 250 761**

Landscaping

SKL Garden Design
• Garden Rock Walls
• Re-cycled Brick Paving
• Old Gardens Re-Vamped
• Regular Garden Maintenance
• Wet Hire Mini Kanga Digger
Call Steve **0407 776 612**

Limestone

Michael's Stonework
Limestone & Coffee Rock
Small Retaining Walls, Steps, Pillars, Stone Pitching, Garden Beds
For a FREE quote & reliable service call:
0427 190 273

Maintenance

PP Maintenance
ABN: 86 642 331 437
PAUL 0477 660 703
paul.percudani@outlook.com
• Painting (Interior & Exterior) • Demolition
• General Repairs • Pressure Cleaning
• Restoration Home or Office (pre sale or lease)

Painting

JIM OLSEN
Painter & Decorator
FREE QUOTES - QUALITY WORK
Reg# 3749
0430 339 118

COLIN MITCHELL PAINTING
PAINTERS REG: 7918
• Efficient & reliable painter
• Competitive rates
• Servicing Perth hills & surrounds
Call **0488 109 739 / 0406 101 952**

Pest Control

MA'S PEST & WEED SERVICES
• Servicing the Hills and surround for 30 years
• Specialising in termite treatments and inspections
Free Quotes Sean: **0417 905 708**

Plastering

EASTERN HILLS PLASTERING
ABN 6737 3874 693
All Aspects of Plastering - Concrete Skim Coating - Acrylic Texture Finish - Renovations
30 YEARS EXPERIENCE FREE QUOTES
TONY **0406 675 211**
easternhillsplastering@outlook.com

Plastering

PLASTERING RENDERING SANDFINISH
ALL SMALL JOBS • RENOVATIONS REPAIRS • NEW ADDITIONS
23 YEARS EXPERIENCE
Professional, Reliable & Friendly
Ph Paul **9295 2041 or 0402 270 688**
www.rossrendering.com

Plumbing

The Tap Doctor
FOR ALL PLUMBING & GAS
• Taps • Toilets • Hot Water Systems
• Burst Pipes • Leak Detection • Blocked Drains
Call Today **1300 655 827**
Our Service Will Amaze You
PL6703 www.thetapdoctor.com GF10208

Local Plumber Same Day Service Hot Water Expert
- Upfront Prices
- Pensioners Save
- Drains, Taps, Toilets
- Burst Pipes, Gas
Emergency Plumbing 24hrs
6118 6368
PL9956 *conditions apply

LOCAL PLUMBER
PL9956
Same Day Service
Blocked Drain, Taps, Toilets
Burst Pipes, Hot Water
*conditions apply
Same Day Emergencies 24hrs
9468 2581
NO CALL OUT* + SENIOR DISCOUNT
Your Best Local Plumber!

Hi I'm Local In Your Area Hot Water Expert
✓ Senior Discounts
✓ Upfront Pricing
✓ Fast Plumber
✓ Drains, Taps, Toilets
\$0 Call Out*
Plumbing Emergencies 24/7
6244 3226
*conditions apply PL9956

Space for Sale

Plumbing & Gas

True Blue Plumbing & Gas
GF 11864 PL 7896
Hot Water • Gas Fitting
Burst Pipes • Renovations
Leaking Taps • Blocked Drains
Ph Tom **0490 535 242**

Reticulation

Reticulation
0433 366 655

CABLE LOCATION SERVICE
• DESIGN
• INSTALLATION
• MAINTENANCE
36 years experience
Reticulation and Landscaping
BORNS INSTALLATION & SERVICE
• PUMPS • SALES • SERVICE • MAINTENANCE
email: paul@reticland.com.au
Call Paul on **0412 900 145 or 9454 5762**
or Aaron on **0429 515 222**

Roofing

ROOF TILE REPAIRS
For all your Roof Tile Repairs
Contact David for a free quote on
0413 240 203 or 9255 4003
Specialising in: Leak Repairs • Gutter Clean
• Tiling • Re-riding • Re-pointing

AMC ROOFING
Specialising in
All Tiled Roofing
New Roofs
Maintenance & Repairs
Free Quotes - Aaron Carter
Mob: **0417 930 817**

AR Specialist Roofing
Solutions for all your roofing needs
including roof restoration, gutters, leaks, downpipes, sheeting, custom flashings, gutter cleaning, carpentry, house painting, roof cleaning, PATIO BUILDING.
Call Andrew
0410 669 184
arspecialistroofing@gmail.com

Roof Restoration

NOBLE ROOF RESTORATION
"THE ROOFING EXPERTS"
• All Roof Maintenance • High Pressure Cleaning
• Ridge Capping/Painting • Gutter & Downpipe Replacements • Delux/NuTech Roof Coatings
All Work Guaranteed!
FREE WHIRLYBIRD WITH EVERY ROOF COATING RESTORATION
FREE QUOTES Jason **0456 566 346**
www.nobleroofrestorationrepairs.com

Tree Services

TLC Tree Services has merged with
Payne's Tree Services
FREE QUOTES AND ADVICE
• MULCHING • LAND CLEARING
• STUMP GRINDING
• TREE LOPPING
Call Clint on **0455 132 014**
paynestreeservices.com.au

HILLS TREE SOLUTIONS
For all your Treelopping and Stumpgrinding Needs
• Locally owned & operated • Call 24/7
• Fully Insured • Cheapest Prices Guaranteed
• Horizon Power Accredited • Servicing All Areas
CALL 9295 6511 OR 0414 438 610
Solution 1147 from 15 December, 2023

Have you missed us? Get your FREE ECHO NEWS direct to your inbox every week.

ECHO NEWS
Go to our website
www.echonepaper.com.au
& click on the Subscription link

Cleaning

Weekly or fortnightly. All products supplied, police cleared - 0428 744 766.

To advertise your situations vacant call 9374 6666.

Employment

Part time Receptionist/bookkeeper required. Will work around your hours available. Located in Midvale. Phone Pat 0418 904 252.

Carer required. Monday to Saturday 7pm - 9pm. Experience preferred but not essential. Will train. Must have ABN or willing to get one. Good pay. Message 0401 972 554.

Employment

CARETAKER

Hobby Farm Caretaker Required Full time Gidgegannup, Perth WA

We have a small hobby farm in Gidgegannup and we are looking for someone to takeover from our current Caretaker who is retiring.

We are looking for a general all-rounder with experience in the following:

- General Garden Maintenance
- Orchard Care
- Tending to Chickens
- Experience with small farm equipment - use and maintenance
- Experience with irrigation and minor pump repairs
- Property Maintenance and upkeep

The position would be suitable for someone with past experience on small farms. There is an opportunity to live on the property for the right candidate.

For further information or to apply for the position please submit your cover letter and resume to kathy.white@directplasterboard.com.au

Gardening

Bilby's Garden Services Weeds, Prune, Mow & Slash. Free Quotes 0416 855 335.

Ian Mac's whipper snipping, chain sawing and weeding. Small tree lopping jobs. 0426 211 137.

K & S Gardening Services. Focusing on Eastern region, Kalamunda. All services. 0412 477 777.

Gutter Cleaning

Get your gutters clean. Call Thomas 0466 546 100. www.guttervac.com.au

Gutter cleaning & solar panel cleaning. Jason 0421 455 546.

Handyman

M & H MAINTENANCE All indoor & outdoor work 0497 110 951.

WILLIS BUILDING & MAINTENANCE SERVICE. Specialising in all house maintenance, pergolas, decking, verandas, painting and carpentry. 0487 093 355.

Health & Beauty

Mobile Hairdresser. Phone Lorraine 0412 291 055.

Hobbyfarm Services

Slashing, mowing, wool buying, firebreaks & fencing. Ian 0458 510 048.

Lawn Mowing

Tony's Lawnmowing, Handyman & Firewood. Cheap rates. Midland & Surrounding Areas. 0431 831 948.

Painting

Painting, Demolition, Pressure Cleaning. 0477 660 703. Local.

FOR A PROFESSIONAL JOB for a reasonable price, phone Andrew 0413 158 763.

Plumbing

MASTERS PLUMBINGAS All Plumbing & Gas work, Blockages, Hot water units, Leaks, Renovations, Burst pipes. 24/7 Emergency Service. NO CALL OUT FEE David: 0416 644 191. PL-9554 GF-011284

Public Notices

CITY OF SWAN

PLANNING AND DEVELOPMENT ACT 2005

STRUCTURE PLAN AVAILABLE FOR INSPECTION

Proposed Amendment No.1 to the Kingsford Town Centre Precinct Structure Plan -To modify the configuration of the Service Commercial Area and Water Corporation Reserve on part of Lot 1354 (2510) Great Northern Highway, Bullsbrook

You are invited to comment on the above proposal before Council considers it further.

This is an applicant-driven structure plan submitted by Hatch Roberts Day on behalf of Amex Bullsbrook Pty Ltd seeking to modify the configuration of the Service Commercial Area and Water Corporation Reserve on part of Lot 1354 (2510) Great Northern Highway, Bullsbrook. Note: the advertising of the structure plan does not indicate any formal support of the proposal by the City of Swan or the Western Australian Planning Commission.

The proposed plan, documents and supporting information can be downloaded from the City's website <https://swanengage.swan.wa.gov.au/planningconsultations> under "Proposed Structure Plans":

Alternatively, you may view the documentation at the City of Swan Administration Centre, No.2 Midland Square, Midland between the hours of 8.00am and 5.00pm Monday to Friday.

Should you wish to comment on this proposal you may do so via an online submission on the above website on or before the submission closing date. If you do not have access to the internet written submissions can be delivered to City of Swan, PO Box 196, Midland, WA, 6936, quoting reference SWAN-SP/2021/2/A.

SUBMISSIONS CLOSE: 04 March 2024

Stephen Cain
Chief Executive Officer
City of Swan
PO Box 196, Midland, 6936



Regrouting

Bathroom Regrouting. Call Andrew 0413 158 763.

Solar Services

Solar Panel Cleaning with Anti Mould & Solar Wax Treatment. 0421 455 546.

Window Cleaning

Tatania's Window Cleaning. Tracks. Frames & Fly screens. 0467 282 127.

Yoga

YOGA



Monday & Thursday 6pm-7.15pm

Gooseberry Hill Hall,
42 Ledger Road
60min Hatha based
yoga class
+ 15min meditation

Ph Jeanene
0406 773 650

FAMILY & CHILDREN'S SERVICES MIDVALE HUB

PERMANENT FULL TIME CHILD CARE JOB VACANCIES:

- Diploma Qualified Early Childhood Educator
- Early Childhood Teacher
- Aboriginal Diploma Qualified Early Childhood Educator *50(d)
- Aboriginal Early Childhood Teacher *50(d)

Shire of Mundaring is seeking applications from creative and experienced Early Childhood Educators with a passion for the early years to support the diverse operations of the Midvale Hub.

**Eligibility to Apply: Pursuant of Section 50(d) of the Equal Opportunity Act 1984, the occupant of this position must be of Aboriginal descent.*

Full details on these vacancies can be found at www.mundaring.wa.gov.au. For further enquiries please contact Gabrielle Crosse on 0428 335 365 or email hubcp@mundaring.wa.gov.au.

Apply online at www.mundaring.wa.gov.au

Applications close 30 January 2024.



ECHO NEWS ADVERTISING TELEMARKETER

Echo News is looking for an experienced sales professional to join their sales team. Your role is to make outbound calls to new and existing clients to obtain print and online advertising, including trades and services. You will be responsible for sales conversations and outcomes and to manage relationships with new and existing clients

Your experience in either sales or in call centres will help you to develop and maintain client relationships.

With your excellent verbal and written communication skills, endurance and a positive attitude, you will successfully build and develop your career with this locally recognised organisation.

This opportunity will help you to develop your communication and people skills, whilst working in a team environment. Please apply by email to:

The General Manager
peter.lewis@echo-news.com

ECHO NEWS Notice Board

Upcoming Events

- **Mundaring Garden Club** meets each fortnight at the Mundaring Church of Christ on Tuesdays 10am to 11.30am. For information on our annual calendar of events and excursions, please call Lorelle 0417 968 105 or see Facebook.
- **Friends of Talbot Road Reserve** are asked to meet at 9am at the end of O'Conner Road in Swan View from the first Sunday in February. For more information contact Ron Kendle on 9294 4194 or mobile 0435 572 167.
- **St Cuthbert's Church** in Darlington is starting a Hom-

age to Mozart series at 3pm on Saturday, January 27. The chamber music concert will commemorate the 268th birthday of Mozart with a program featuring his works and works by composers who were inspired by him played by West Australian Symphony Orchestra members. Includes refreshments and cake. For bookings phone 9574 1591.

Noticeboard is for non-profits and community groups advertising free/low cost events/programs. Entries must be emailed to editorial@echo-news.com two weeks before the event.

Read between the lines

by Ken Duffy

The place where we grow up and the people we grow up with has a profound influence on the development of our lives.

I grew up in the humble working class area of Williamstown, Victoria, now known as 'Yuppieville'. In those days you could drive down the street, leave your keys in the car and return to it untouched. If you lost your wallet or purse, you had an almost 100per cent chance it would be returned with nothing missing.

My Dad sent me to Church "to get a bit of religion into me". The people I met were amazing, the singing was so good! One of the people I met was Joan Neville/Burrett. She was six years older and absolutely delightful. She sang duets and in Quartets. Joan was a

backstop in the Church. I never heard her say 'no'. She taught myself and my best mates to dance, often to her own detriment because we 'cut out' any interested young men. Mrs Neville, my second Mum, Joan and the Neville home became the hub for so many Youth Nights. A team of us gathered making 'the best Lamingtons' on Saturday morning. Each had a particular job, before going off to our sporting events.

The rich and famous only cause us to be envious, but people like Joanie inspire us to be better people. She passed away on 20 December, just prior to her 90th birthday. A true Christian, who will never make the headlines, but the world can't do without!



ECHO NEWS

Indemnity and Warranty

ECHO NEWSPAPER CONDITIONS OF ACCEPTANCE. When an individual or other legal entity ("the Customer") requests Echo Newspaper ("Echo") to place an advertisement in this Newspaper, they agree to be bound by the following terms and conditions:

1. Echo, at its sole discretion, may decline to publish any advertisement requested by a Customer. If Echo decides not to publish a particular advertisement, there is no obligation on Echo to disclose the reasons for its decision, and Echo will not be liable for any loss or damage occasioned to the Customer as a result of the decision.
2. Echo will not be liable for any loss or damage caused to a Customer as a result of delay or as a result of Echo failing to place a requested advertisement or publishing an advertisement containing an error or omission.
3. Echo may, at its sole discretion, decide to refund a Customer a portion of the cost of the advertisement if it forms the view that the error was not attributable to the Customer and the Customer notifies Echo of the error or omission before 5.00pm on the day the advertisement first appears in the Newspaper.
4. Complaints concerning the accuracy of any invoice must be notified to Echo within 30 days from the end of the month in which the advertisement was published, after which time the Customer forfeits any rights it may have had to challenge the invoices.
5. The Customer warrants that publication of the requested advertisement/s will not contravene any laws, whether statutory, equitable or otherwise, and agrees to wholly indemnify Echo (and its employees and agents) against all expenses, loss and damage arising directly or indirectly from the publication of the advertisement/s.

Midland Guildford 1st grade post powerful win

JOSHUA MCKENZIE

THE Midland Guildford Cricket Club senior male sides won their fixtures in all four grades against Mount Lawley with the male 1st grade players putting on a dominant display to win by 190 runs after posting 9-267 and dismissing their opponents for 77.

Dylan Sharman (71 runs off 92 balls) and Austin Thomas (64 off 65) were the standouts with the bat, before Justin Kandiah (4-6 off 4.3 overs) and Josh Nicholas (2-14 off five overs) tore through the opposition top order, as Keaton Critchell also took three wickets for 15 runs off four overs in what was a complete performance.

After some initial struggles in the male 2nd grade, the side recovered from 5-64 to finish the innings on 231.

A 114-run partnership for the sixth wicket between Max Bittner (53 off 69) and Josh Vernon (57 off 67) was crucial in posting a target of 232 for the opposition.

Vernon and Matt Harben were the standouts with the ball as they took 4-32 and 3-28 respectively, their efforts helping to dismiss Mount Lawley for 209 in a 22 run victory for the side.

The male 3rd grade side were asked to field first in their fixture against the same opposition, with all bowlers contributing towards restricting Mount Lawley to 7-177 off their 45 overs.

Jacob Heslop was the most impressive

bowler on the day with two wickets for just 15 runs off his nine overs.

Jack Kelly (62 not out off 98) anchored the run chase alongside Calan Hill (59 off 56) as they chased the target comfortably with six wickets and 8.4 overs to spare.

It was somewhat less straightforward for the male 4th grade as they were bowled out for 180; Daniel Barrington was the top scorer with 42 off 66.

Dylan Clements and Matt Olsen took two wickets each, while Ethan Ozanne took 3-19 off six overs to help dismiss their opponents for 139 and secure a 41-run win.

The male U17 and male U15 teams played T20 matches against Mount Lawley, with the U17 winning by nine wickets after a comprehensive display which saw them dismiss their opponents for a total of just 67.

The under U15 were only able to restrict their opposition to 6-104 and fell 35 runs short in a challenging run chase.

The male U14 kept their season alive after a 69-run victory over Bayswater Morley, while the male U13 remain top of the table after beating the same opposition by 12 runs.

The female A grade faced a difficult challenge against Melville and after posting 9-213 they were unable to take regular wickets as they would ultimately lose by seven wickets.

It was a similar story in the female B grade as they also struggled to take wickets often enough, finishing their batting



Midland Guildford Cricket Club player Callan Hill (59 off 56) helped chase the target set by Mount Lawley in their 3rd grade match.

innings at 8-145 as South Perth chased the target with four wickets to spare.

The female U17 were victorious by 25 runs against South Perth after making 147 and dismissing their opponents for 122.

Tiffany Exell was the main contributor with the bat as she made 50 off 86, before

Jorja Bittner took 3-20 off six overs to be the best of the bowlers.

In the female U14 Melville made 4-80 off their 20 overs in what proved to be short of what was required as Midland Guildford chased the target with five wickets and 6.1 overs to spare.

Local Real Estate

**Residential
Commercial
Rural & Country**


Fantastic foothill find

STEP back in time with this vintage 1970s Swan View home located on the doorstep of John Forrest National Park.

This 2ha property enjoys expansive views of the surrounding bushland and hills and comes with four bedrooms, two bathrooms, two water-closets, and a two-car garage.

All the bedrooms have built-in wardrobes and enjoy views of the lush scenery outside, while the main bedroom also includes some added privacy with its own ensuite.

The interior highlights the classic 70s style with an assortment of varied tiles and bricks which provide ample personality to the home.

A mix of mosaic floor tiles and classic carpeting span the house, complimenting the dark exposed brickwork and exposed timber beams seen throughout.

The U-shaped kitchen has a dual-basin sink, washing machine, and electric stove top, while the surrounding windows let in

an abundance of natural light.

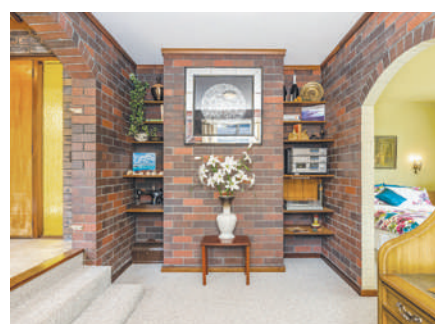
The pièce de resistance of the home is the formal lounge which features a central brick-clad fireplace.

A central, extensively paved courtyard is perfect for entertaining and overlooks the bush blanketed hillside.

The property also has a powered workshop, sprinklers on the roof and a solar hot water system.

Located near the historic Swan View Tunnel, Railway Heritage Trail and Rocky Pool, and only a 5-minute drive from the local shopping centre, and just a 10-minute drive from the Midland Gate Shopping Centre this home is a perfect mix of semi-rural living.

Address:
880 Viveash Road, Swan View.
Price: \$1.75 million
Agency: Professionals 5 Star.
For more information contact
Helen Colja on 08 9274 1655 or 0411 152 777



Rental and house prices are surging

RENTAL prices in Perth surged an enormous 20 per cent in 2023, according to the latest PropTrack Market Insight Report.

The report found that median advertised rental prices in Perth rose to \$600 per week in the December quarter, up \$100 per week compared to a year ago.

Key findings:

- Rent prices in regional WA surged. They rose 5.5 per cent over the December quarter – the strongest growth in the country.
- With median rents sitting at \$580 per week in regional WA, it is the equal most expensive regional market alongside regional Queensland.
- House rents rose a significant 20 per cent over the year to sit at \$600 per week, while unit rents rose 15.6 per cent over the year to sit at \$520 per week.
- Units were the driver of the strong growth, sitting 3.8% higher over the quarter and 19.6 per cent higher over the year to sit at \$550 per week.

Meanwhile, according to REIWA's 2024 property market quarterly update Perth house prices are set to grow 10 per cent in 2024.

"After a slow start, house sale price growth accelerated over the year, recording 2.6 per cent growth in the December quarter and 8.3 per cent over the year to reach a median of \$590,000," REIWA CEO Cath Hart said.

The median unit sale price was stagnant for many months across 2023 but started to increase at the end of the year, rising 2.0 per cent over the December quarter and 0.7 per cent over the year to a median of \$408,000.

"We can expect more increases in the median unit price in 2024," Ms Hart said.

Greg's Discount Drug Store Midland Superstore

SALE ON NOW!

10 January - 24 January, 2024

SUPER SAVERS

50% OFF RRP*
Selected lines only



\$16¹⁹

Save \$16.30[^]
off RRP

Nature's Own Super B Complex
75 Tablets

Always read the label and follow the directions for use.

SUPER SAVERS

30% OFF RRP*
Selected lines only



\$59³⁹

Save \$25.56[^]
off RRP

Optifast VLCD Shake Chocolate or
Vanilla Flavour 18 x 35g Sachets

Always read the label and follow the directions for use. Optifast Very Low Calorie Diet (VLCD) is for the dietary management of obesity and must be used under the supervision of a healthcare professional.

SUPER SAVERS

20% OFF RRP*
Selected lines only



\$30⁴⁹

Save \$9.50[^]
off RRP

Dymista Allergy Nasal Spray
17ml

Always read the label and follow the directions for use.

SUPER SAVERS

35% OFF RRP*
Selected lines only



\$46⁹⁹

Save \$28.01[^]
off RRP

Nicorette QuickMist Smart Track Freshmint
Duo 2 x 150 Sprays

Stop smoking aid. Always read the label and follow the directions for use.

SUPER SAVERS

30% OFF RRP*
Selected lines only



\$10⁴⁹

Save \$4.50[^]
off RRP

Bondi Sands SPF 50+ Body Sunscreen Lotion
Fragrance Free 150ml

Sunscreen is only one component of sun protection. Prolonged high-risk sun exposure should be avoided. Frequent use and re-application in accordance with directions is required for effective sun protection.

SUPER SAVERS

20% OFF RRP*
Selected lines only



\$8³⁹

Save \$2.11[^]
off RRP

Veet Expert Face Wax Strips Sensitive Skin
20 Pack

Only available at Greg's Discount Drug Store Midland. SuperSaver offers on sale from 10 January till 24 January, 2024. All items in this publication have been included in good faith on the basis that the goods described will be available at the time of sale and only while current stocks last. Failure by the supplier to deliver in accordance with the sample, description or all unintentional causes may result in some products being unavailable. We reserve the right to amend pricing due to manufacturer price rises or printed errors. ^Savings calculated based on the recommended retail price as provided by the supplier and not necessarily previous in-store price.



GREG'S DISCOUNT DRUG STORE MIDLAND
243 GREAT EASTERN HWY,
MIDLAND WA 6056

PH: 08 9274 1455 • E: gregs@gregsmidland.com.au

OPEN 7 DAYS: 7.30AM - 9PM



Discount Drug Stores
More than just low prices