

ECHO NEWS

SINCE 1985

Friday, April 5, 2024

Local Business Supporting Local People

VOL.42 NO.1858

The Kalamunda Agricultural Society is proud to announce the 2024

123rd Kalamunda Show

FRIDAY 12TH APRIL
5PM TO 10PM

SATURDAY 13TH APRIL
10AM TO 8PM

Presented by

LIVELIGHTER

Online Ticketing:

www.kalamundashow.com.au

Our year of the Volunteer

This year's show would not have been possible without our communities ongoing support



LOG CHOP COMPETITION
100s OF EXHIBITS
OLD MACDONALD'S FARM
SHEEP DOG DEMONSTRATIONS

BENDIGO BANK FIREWORKS

FRIDAY ONLY
8.30PM



MUSICAL GUESTS

Stevedore Jazz Band

Kalamunda Senior High School
FRIDAY NIGHT

Even Flow
Pearl Jam
Tribute Band
SAT NIGHT



KOSTERA OVAL AND AGRICULTURAL HALL KALAMUNDA



STALLS
RIDES
FOOD

CAN'T WAIT TO SEE YOU THERE!



Find us on Facebook



Proudly sponsored by



Community Bank
Forrestfield



FREE Native Plant GIVEAWAY

Come visit the Mazenod and St. Brigid's College Sustainability tent at this year's Kalamunda Show.

Free Native Plants, Free Decorate your own recycled Wooden Plant Tag, Free Colouring Competition, Free Jewellery Craft Making and Worm Wee available for purchase.

Return any 10c recyclable container to the Mazenod/St. Brigid's College tent at the show and receive a FREE Native Plant* Proudly provided by the City of Kalamunda Adopt-A-Patch Program.

Proudly supported by



*One per person & Limited Stock

**WE INVITE YOU
TO JOIN US ON
A TOUR**



**ST. BRIGID'S
COLLEGE**

**2024 DATES:
17 MAY, 14 JUNE, 19 JULY,
13 SEPT & 15 NOV
9:00AM TO 11:00AM**

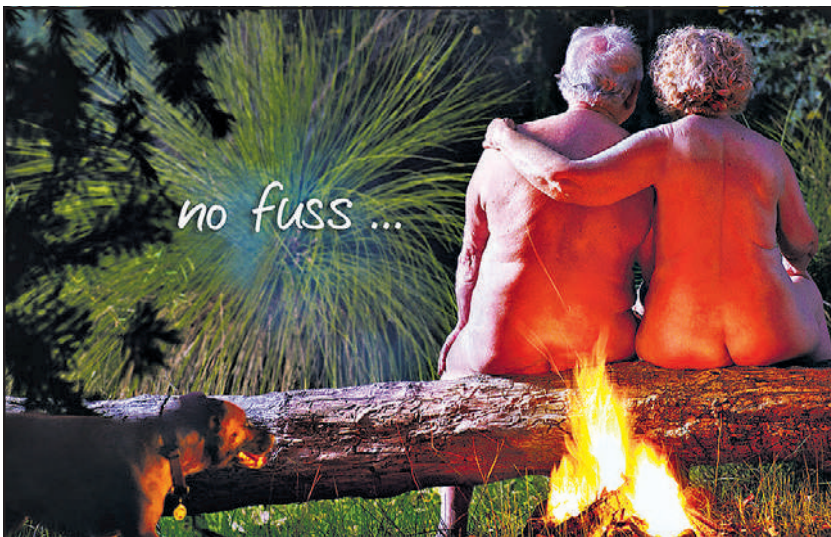


www.sbcl.wa.edu.au

CONTACT US
08 9290 4200

TOUR BOOKINGS ARE ESSENTIAL
trybooking.com/CNZA

Come visit the Mazenod College & St. Brigid's College Sustainability Tent at this year's Kalamunda Show. Free Native Plants, Free Decorate your own recycled Wooden Plant Tag, Free Colouring Competition, Free Jewellery Craft Making, and Worm Wee available for purchase.



"I'm a straight forward bloke. Don't like fuss. Don't complicate my life. That's the way I live. So when I depart this world, I'm going the same way I lived it - No Frills, No Fuss" - Jack

Just Cremations

Funeral Directors

www.justcremations.com.au
Freecall 1800 65 35 95

17 Canning Rd, KALAMUNDA
20 Bonner Dr, MALAGA
401 Gt Eastern Hwy, REDCLIFFE
47 Pinjarra Rd, MANDURAH

ECHO151021L

123rd Kalamunda Show



Presented by



Supported by



*Our year
of the
Volunteer*

**Friday 12th April from 5pm-10pm
and Saturday 13th April from
10am-8pm Kosteria Oval, Kalamunda**

Program

PROGRAM TIMES MAY BE SUBJECT TO CHANGE



Kalamunda Show Entertainment 2024

ON STAGE Friday 12th April 5.00pm – 10.00pm

5.00pm Kalamunda Senior High School
8.00pm Chinese Dragon Dance
8.30pm **FIREWORKS**
10.00pm **CLOSE**

**Stage
Entertainment**
both Friday
Evening & All
Day Saturday

ON STAGE Saturday 13th April 10.00am – 8.00pm

10.00am The Black Chooks
10.55am Small Little Dancers
11.15am PCYC Clowns
11.45am **OFFICIAL OPENING**
12 noon Kalamunda Performers
1.15pm Parkerville Community Band
2.15pm Stevedores Jazz Band
3.15pm Ciaran Mullin
6.15pm Even Flow – Pearl Jam Tribute Band

**Showmen
Rides
POP UP
BAR**

Sheep Dog
Demonstrations &
Old MacDonald's
Farm

ROVING Saturday 13th April 10.00am – 3.00pm

10.30am Goggles – Meet and Greet
10.30am Eco Faeries
11.00am Al Magic Show
11.35am Goggles – Meet and Greet
12.30pm PCYC Clowns
12.45pm Adventure Kids – Meet and Greet
1.00pm Bubbleology
1.30pm PCYC Clowns
1.10pm Al Magic Show
1.45pm Adventure kids – Meet and Greet

**Pony Rides
Lapidary
Club**

KIDS CORNER Saturday 13th April 11.00am – 4.00pm

11.00am Josephine and Goggles Storytelling plus Musical Madness
12 noon Al Kazam Magic Show
1pm Eco Faeries and Craft Fairies

Kids Corner
Plaster Moulds
& Worm Farm
3pm Close

PAT MORAN PAVILLION Saturday 13th April 1.00pm – 1.45pm

1-1.45pm Adventure kids / Sustainability Show

ALL DAY ACTIVITIES Saturday 13th April

All Day Log Chop (Final at 4pm)
10am-5pm Supersonic Science

**Decorated
Bikes
Judging
4.15pm**

**Did you
know?**



Over the past month

30,000 users

have visited our *Echo News* site with **130,000** hits.

Digital advertising is available on our website from \$150

ECHO

NEWS

sales@echo-news.com | **9374 6666**

Jus' Dance MADDINGTON 0413 430 721 - JENNY *Learn to DANCE TODAY!* info@jusedance.com.au www.jusedance.com.au

KIDS CLASSES | ADULT CLASSES | SENIOR CLASSES | 1984 ALBANY HWY, MADDINGTON 6019

EVENING CLASSES MONDAY - FRIDAY 7 - 9PM
BALLROOM | LATIN | SALSA | ROCK N ROLL | JIVE & SWING | NEW VOGUE | SEQUENCE

KIDSPORT APPROVED CLUB **Social Dance** **WEDNESDAY** **AMERICAN SMOOTH**
FRIDAY 12TH APRIL **ROCK'N'ROLL 7-8PM** **Thursday**
\$12 **SWING JIVE 8-9PM** **7-8pm**
8PM - 11PM **BEGINNER & IMPROVER LEVELS**
All welcome. (Beginner Bronze Waltz Routine)

Jus' Dance KALAMUNDA **TUESDAYS BEGINNERS 7.30-8.30PM**
TUESDAYS INTERMEDIATE 6.30-8.00PM
ST BARNABAS CHURCH HALL, 40 RAILWAY RD, KALAMUNDA
Check our class timetable www.jusedance.com.au

123rd Kalamunda Show



Presented by



Supported by



EXHIBITS • SPORTS GROUPS ACTIVITIES • PAT MORAN PAVILLION PRESENTATIONS
ALPACA SHOW • GOAT SHOW • SHEEP DOGS AND SHEEP DEMONSTRATION
BENDIGO BANK ACTIVITY • VINTAGE CARS • MACHINERY PRESERVATION DISPLAY
BLACKSMITH • LOG CHOP • 10TH LIGHT HORSE DISPLAY • SUPERSONIC SCIENCE
PERTH OBSERVATORY • RAC INTERACTIVE HELICOPTER DISPLAY • OLD MCDONALDS FARM
ARMADALE REPTILE DISPLAY • KANYANA • HYUNDAI CAR DISPLAY • CITY OF KALAMUNDA DISPLAY

AGRICULTURAL HALL – FRIDAY & SATURDAY:

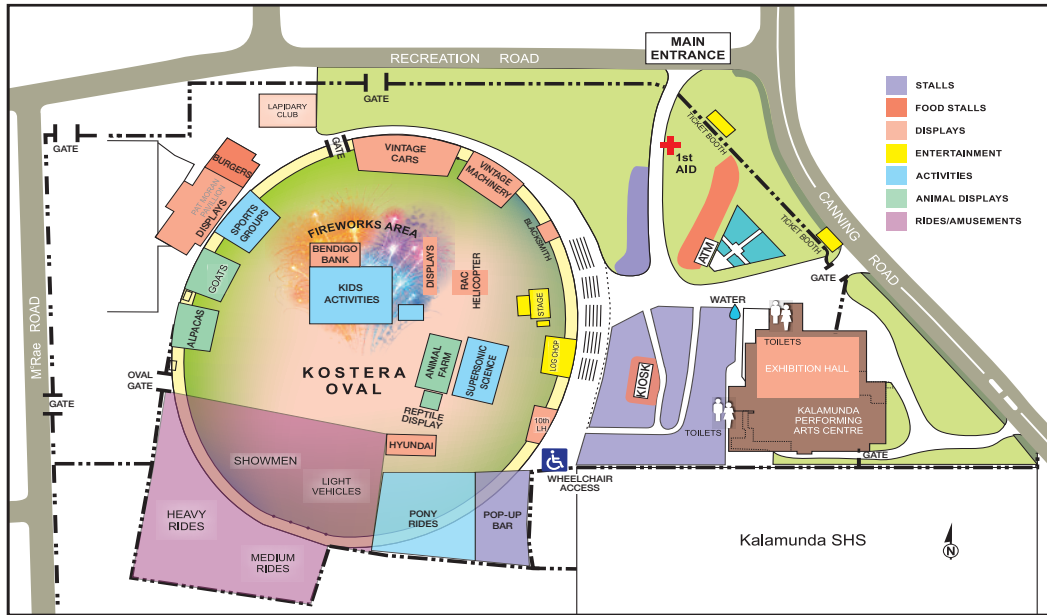
FLOWERS • CRAFTS • COOKING • CRAFT BEERS, PHOTOS • VEGETABLES.

MEMORIAL AREA – SATURDAY: KIDS CORNER FOR YOUNG KIDS

LARGEST COMMUNITY EVENT IN THE CITY

Bendigo Bank Fireworks 8.30pm Friday

Entry Prices: Children 6yrs and younger free entry Children 6-15yrs \$15
Concession \$10 Adults \$20 Family \$40



KALAMUNDA SHOW SPONSORS

PLATINUM SPONSORS



GOLD SPONSORS



SILVER SPONSORS



EXHIBITION HALL SPONSOR



SALE & RENTAL PROPERTIES WANTED

We have Pre-qualified Tenants ready and waiting.

Get a Free Property and Rental Market Appraisal NOW. Call Today!!



9274 1655



Want to make a difference in your community? We need you!



COMMUNITY PROJECTS
EXCHANGE PROGRAMS
KALAMUNDA ARTISAN MARKETS
COMMUNITY GROUP SPONSORSHIPS
YEAR 6 ENCOURAGEMENT AWARDS

HOMELESS & MENTAL HEALTH PROJECTS
SUPPORT FOR WILD LIFE REHABILITATION
ENVIRONMENTAL PROGRAMS
WHEEL CHAIRS FOR KIDS

FUN & EXCITING UPCOMING EVENTS!

Can you dedicate an hour a week or fortnight to help?

Call Lisa 0423 024 724

Looking After Your Special Needs



Adelphi is ready to assist Participants, their families and Support Coordinators in navigating the NDIS journey. Adelphi Living is a highly regarded Supported Independent Living care provider with access to new NDIS approved Specialist Disability Homes located in Midland and coming soon to Northam.

Please visit our website
www.adelphiliving.com.au
or call us on
6331 6888 for further assistance



ECHO050424L

Stop and say Hello at the Kalamunda Show!



LIBERAL SENATOR FOR WESTERN AUSTRALIA



Suite C, 117 Great Eastern Highway, Rivervale, 6103 08 9477 5411
senator.reynolds@aph.gov.au lindareynolds.com.au LindaReynoldsWA

Senator Linda Reynolds, Liberal Party of Australia, Suite C, 117 Great Eastern Highway, Rivervale WA 6103.

Karingal Green

HEALTH AND AGED CARE COMMUNITY

Wellness Centre



Karingal Green Wellness Centre provides health and wellness services for our seniors community.

Our physiotherapists provide services including Hydrotherapy, Physiotherapy Treatments, Gym and Pilates Classes. We also have a Massage Therapist available. You are welcome to use your private health fund, Medicare care plan, DVA, NDIS or Home Care Packages at the Wellness Centre.

Why not get started on your health and wellness journey at Karingal Green.

**For your initial consultation call
0490 940 371**



Wellness@karingalgreen.com.au
53 Hawkevale Road, High Wycombe WA 6057

Karingalgreenwellness.com.au

Proudly part of the Hall & Prior Aged Care Group

 **HALL & PRIOR**
Health & Aged Care Group

ECHO NEWS

SINCE 1985

Friday, April 5, 2024

MIDLAND
cycles

We have relocated

5/245 Great Eastern Hwy
MIDLAND

www.midlandcycles.com.au

Local Business Supporting Local People

VOL.42 NO.1858



**Hills kids
centre
stage**
PG4



**Grants
set to
electrify**
PG6



**Swan
leading
accessibility**
PG8



Long road back to China

As the tariff tiff between Australia and China softens, some Swan Valley winemakers want to rebuild their relationship with the country.

PG3
Picture:
Sandalford
Wines

TREE AESTHETICS

BACK IN STOCK!!

Place your **FIREWOOD ORDER NOW!!**

PICK-UP OR DELIVERY OPTIONS AVAILABLE

Opening Hours
8am-4pm Monday-Friday
Lot 10 Talbot Road Hazelmere
(ENTRY OFF MIDLAND ROAD)
Call us now 9250 6599

office@treeaesthetics.com.au www.treeaesthetics.com.au

"You adore it, we store it"

FORRESTFIELD SELF STORAGE

Family owned & operated
We sell boxes and packaging

P: 08 6162 3777
253 Berkshire Road, Forrestfield
info@forrestfieldstorage.com.au
www.forrestfieldselfstorage.com.au

PM Pension Manager
Your Centrelink Specialist

Helping Older Australians Navigate Centrelink

CLAIM SERVICES

- Age Pension Claims.
- Commonwealth Seniors Health Card and Low Income Card Claims.
- Home Equity Access Scheme Claim. Use your home equity to increase your pension.
- We manage the claim process from beginning to end.

NOMINEE SERVICES

- To act on your behalf with Centrelink.
- Keep your Centrelink account up to date to ensure correct payments and avoid debts.
- Avoid the frustrations of trying to speak with Centrelink, we will manage it all for you.

OTHER SERVICES

- General Assistance and Consulting with Centrelink Issues.
- Phone and Email consultations.
- Hourly and half-hourly rate for individual consultations.
- Ongoing management of your Centrelink account.
- Assistance with Bereavement Reviews.

Phone: 1800 339 300: 9am - 5pm (WST)
Email: enquiries@pensionmanager.com.au
Website: www.pensionmanager.com.au

Western Australian owned and operated. Fully remote service available.



Here to help!
DONNA FARAGHER JP MLC
 MEMBER FOR EAST METROPOLITAN REGION
 Shadow Minister for Community Services;
 Early Childhood Education; Seniors & Ageing; Youth

Ground Floor, 108 Swan Street Guildford 6055
 9379 0840 | faragher.eastmetro@mp.wa.gov.au
 Authorised by D.Faragher, Ground Floor, 108 Swan Street Guildford WA 6055

Citizens Advice Bureau
 MIDLAND

- Information & Referral Service
- Legal Advice (by appointment)
- Legal Aid Virtual Office (Appointments made via 9261 6376)
- Probate Kits

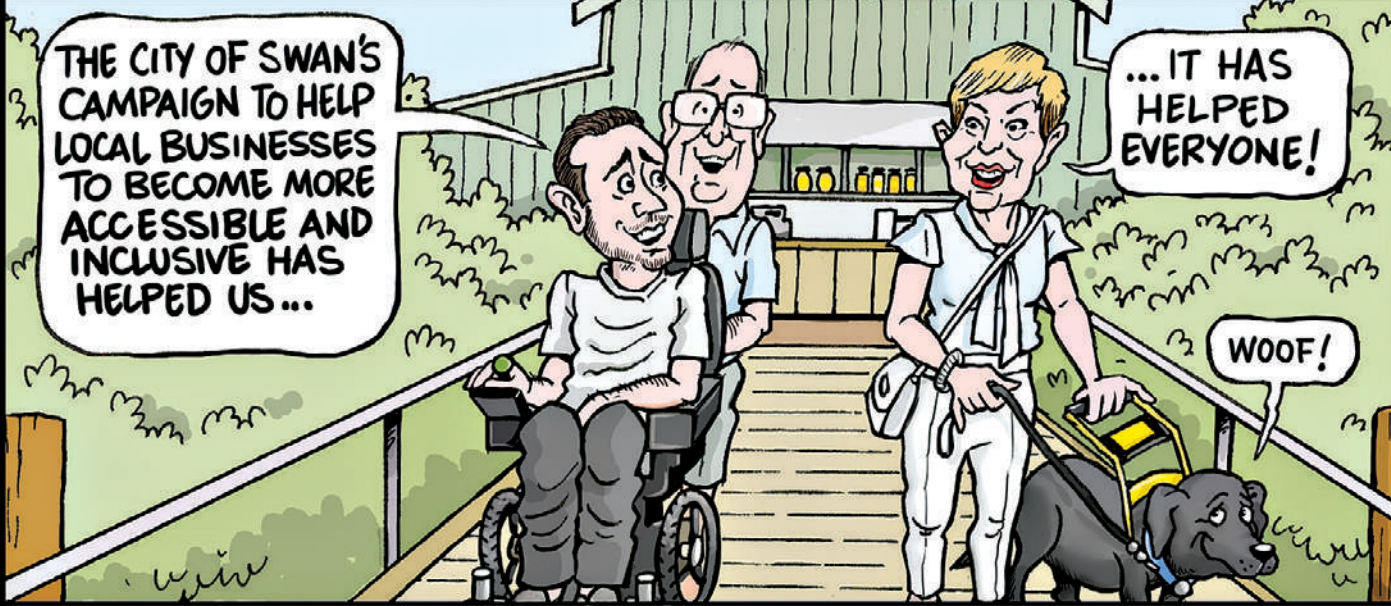
Tuckers Arcade
 Shop 6, 4 Old Great Northern Highway
 MIDLAND WA 6056
 Phone: 9271 2500
 Email: midland@cabwa.com.au

Problems with drugs or alcohol?

Help **IS** available.

Treatment works.
 Find out more at ancd.org.au

AUSTRALIAN NATIONAL COUNCIL ON DRUGS



THE CITY OF SWAN'S CAMPAIGN TO HELP LOCAL BUSINESSES TO BECOME MORE ACCESSIBLE AND INCLUSIVE HAS HELPED US...

...IT HAS HELPED EVERYONE!

WOOF!

THE CITY OF SWAN LAUNCHED A CAMPAIGN FOR LOCAL BUSINESSES TO BECOME MORE ACCESSIBLE AND INCLUSIVE WITH REVIEWS OF OWNERS PREMISES AND RECOMMENDATIONS TO MAKE IMPROVEMENTS TO REACH MORE CUSTOMERS.

ECHO YOUR THOUGHTS Have your say: editorial@echo-news.com

Café closure
 Dear Echo News,
 Yesterday I was told that Poste Café in Guildford had permanently closed.
 I had rung as I wanted to make a booking for Saturday breakfast with my family and spoke with someone from the landscaping business connected to the café.
 Such disappointing news that this unique and special venue was no longer there to visit and enjoy.
 It has certainly been a favourite place, particularly loved by my grandchildren.
 I am deeply sorry that the owners have made the decision to close the business and we can

Thought for the day
 "It does not matter how slowly you go as long as you do not stop."
 -Confucius

no longer spend time in the beautiful garden and building.
 I wanted to understand why this had happened and searched on the internet where I found on the Instagram site a letter from the owners.
 From my understanding, it appears that this was not an easy decision but negativity, lack of support and continued resistance to what they offered made it not possible to continue, even though they were proud of what had been achieved.
 This seems so wrong.
 It was indeed fortunate to have the much-loved historical building used in such a positive way and it is indeed regrettable that Guildford will lose such a popular business inviting visitors to the area.

nally being heard.
 A proposal for a North Parkerville urban townsite (next to John Forrest National Park and opposite Satterley's proposed North Stoneville township) has been radically downsized - from more than 700 lots to 67 lots - perfectly reflecting the rural-residential landscape in which it sits and ensuring that future residents aren't being put in harm's way in terms of fire.
 I believe there is a strong message in this recognition of place, and one can only hope the Satterley Group and its partners the Perth Anglican Diocese will consider this as they pursue their controversial (and much-rejected) proposal for a township in North Stoneville.
 I think it's time the legacy plan to consider creating urban cells within the Perth Hills was buried forever.
 It's good to see this North Parkerville development showing the way.
T Wiltshire
Darlington

makes Woodside so protected, but leaves the environment, sacred sites, ancient artwork treasures and cultural beliefs so desecrated?
P Carman
Hovea

CEO not forgotten
 Dear Echo News,
 It is a loss to our large Perth Hills community of forest lovers, that former Kalamunda chief executive officer Rhonda Hardy has passed, as reported in *Former Kalamunda CEO passes away* (Echo News, March 22).
 Local government chief executive officers who care as much about sustainability, and recognise people and environment are two sides of the same coin, are too rare.
 If Ms Hardy was still at the helm of the City of Kalamunda, I believe the new Friends of the Northern Jarrah Forest Belt - which includes the City of Kalamunda - would likely have her support in the quest to get this unique ecology, listed as a UNESCO World Heritage site and Biosphere Reserve.
 Ms Hardy only resigned less than six months ago in order to focus on her battle with cancer.
 In the position since 2013, Ms Hardy was active as chief executive officer when the Kalamunda community was supported to stage its first Kalamunda Forest Festival in 2022.
 Attracting more than 2000 forest lovers, it was big enough to warrant a stall by the WA Forest Alliance, which represents over 26 organisations concerned with forest science and care throughout the southwest of WA.

Similarly, the festival was popular again last year.
 Let's hope that in Ms Hardy's absence, support for the Kalamunda Forest Festival is not revoked by council this year and can continue annually to become a treasured icon of Kalamunda and the Perth Hills.
 May other local government chief executive officers across the Northern Jarrah Forest Belt emulate Ms Hardy's approach to the community and their trees.
S Braun
Mundaring

The Echo reserves the right to edit letters for length, legal reasons or clarity. The opinions expressed do not necessarily reflect those of the Echo. All letters must contain the author's full name, address and phone number for verification purposes.

SLW TRANSPORT PTY LTD

SLW Transport is family owned & operated

You need it moved just ask!

- Prime Movers
- Rigid Courier Utes
- Side Loaders
- Single Trailers - Triple Road Trains
- Oversize Haulage
- Mine & Construction Site Projects
- Wharf Pick-ups & Deliveries

Phone: 0438 774 201

130a Milner Rd, HIGH WYCOMBE WA 6057

A good plan now?
 Dear Echo News,
 It was heartening to read your comprehensive coverage of a development proposal being warmly welcomed by the Perth Hills community, Mundaring councillors and officers, and Save Perth Hills.
 The concerted efforts of all three - to ensure the Darling Scarp's landscape, lifestyles and natural assets aren't lost to inappropriate planning or development - is fi-

Woodside wonders
 Dear Echo News,
 Even the most casual observer must wonder what Woodside has over the WA and federal governments.
 To me, this gas behemoth seems untouchable and unquestioned by those tasked with governing our environment or regulating gas production.
 Perhaps it's the well-trodden pathway to future employment opportunities that

ECHO News

ADDRESS:
 Unit 4/9 The Avenue
 Midland WA 6056

Phone: **9374 6666**

GENERAL MANAGER / EDITOR
 Peter W Lewis 9374 6605
peter.lewis@echo-news.com

DISPLAY ADVERTISING
sales@echo-news.com
 Belinda Lyne 9374 6607
 Karon McCracken 9374 6610

CLASSIFIEDS, TRADES & DIGITAL ADVERTISING
reed.lewis@echo-news.com
 Reed Lewis 9374 6600

EDITORIAL
editorial@echo-news.com
 Anita McInnes 9374 6603
 Guanhao Cheng 9374 6602

PRODUCTION
production@echo-news.com
 Jeanene Allen 9374 6613
 Liz Rowlands 9374 6613

ACCOUNTS
accounts@echo-news.com
 Caprice Harries 9374 6604

OFFICE HOURS:
 Monday-Thursday:
 9.00am - 5pm
 Closed Friday
 Closed: Weekends & Public Holidays

Removal of wine tariffs not an easy path back to China

ANITA McINNES

ABOUT a dozen Swan Valley winemakers are keen to export to China now that the wine tariffs are removed, according to Swan Valley and Regional Winemakers Association president Damian Hutton.

But Mr Hutton said he hoped removal of the tariffs would benefit winemakers who had been pushed out of the local market by those already exporting to China when the tariffs hit and had nowhere to put the product they had earmarked to go there.

He said that wine ended up back on Australian shelves so large quality producers in the east were sending product to sell all over the country but in WA consumers could buy \$30 to \$40 bottles of wine for less than \$20.

“Our market got squeezed out by quality well-known brands which were dumping it into large chain supermarkets and we just

didn't have a chance,” he said.

“We were trying to compete but the prices are ridiculous so these very good wines were just out-competing us in a really competitive market already.”

“When the market opens back up again for those well-known brands all going into China they should hopefully clear the shelves (here) a little so we've all got a bit more breathing space and the prices might go back to normal.”

Mr Hutton, who is chief winemaker at Nikola Estate, said their first step would be to get more wine into Asia but not necessarily directly to China.

“Unless one of the distributors that we're dealing with up in Singapore says 'look they're really interested come and do a meet greet' and whatever that's sort of the next step.

Continued page 18.



More traffic lights proposed for Midland

GERA KAZAKOV

MAIN Roads is seeking comment from the community regarding a proposal to install another set of traffic lights on Great Eastern Highway.

The lights are proposed for the stretch of Great Eastern Highway between Lloyd Street and Roe Highway at Ferguson Street.

Main Roads said that options were being investigated to improve congestion and road user safety within the Midland area.

“These signals would allow safe right turns from Ferguson Street into Great Eastern Highway, especially for heavy vehicles, while planning continues for a future upgrade of Great Eastern Highway,” Main Roads said.

There are no extra turning lanes planned for either side of Ferguson Street, which will remain a two-lane one-way road, but left and right turns will be allowed onto Great Eastern Highway from the lights.

“To support this interim improvement, the Ferguson Street intersection would need to be modified to allow only straight through or left turn movements on Great Eastern Highway,” Main Roads said.

Main Roads said this is due to the high number of vehicles queuing to turn right could lead to an increase in the number of crashes on the road.

“All movements would, however, be reinstated at this intersection as part of a future highway upgrade,” Main Roads said.

The project remains subject to funding, according to Main Roads, and comments on the proposal can be made until May 10 at <https://www.mysaytransport.wa.gov.au/great-eastern-highway-and-ferguson-street-midland-proposed-traffic-signals>

Bassendean and Swan begin boundary talks

ANDREW WILLIAMS

AFTER a series of council meetings, the Town of Bassendean and the City of Swan have entered into talks about re-aligning their shared boundaries.

It all began at the City of Swan's annual electors meeting on February 5, where a motion was presented by a South Guildford resident requesting the council review its south-western boundaries and to engage with the Town of Bassendean about realignment.

The motion reasoned the City of Swan's sizeable population of more than 165,000 residents and how quickly it has grown in

recent years posed governance challenges.

It also noted the diversity of demographics from established historical suburbs like Guildford and Woodbridge, compared to newly expanded urban areas like Brabham.

“Extreme diversity in demographics and the variable needs of old versus new suburbs often leads to disparity in revenue distribution,” the motion stated.

“In practical terms this motion seeks to address the needs of communities more closely aligned to the Town of Bassendean geographically and/or historically, and with similar demographics, urban density and activity.

“Seeking unification of those communities of interest makes sense in terms of targeted delivery of services for residential and industrial urban areas more closely aligned to the Town of Bassendean demographic and locality than the City of Swan.”

The following week at the Town of Bassendean general meeting of electors a motion was put to the council which requested it write to the City of Swan to express willingness to engage in a collaborative process to review a potential boundary realignment.

On March 11, the Town of Bassendean **Continued page 18.**

ADVERTISEMENT

Natural Disaster Resilience

Reliable Communications, Power and Affordable Insurance

Join us for information and advice to improve our community's resilience to storms and bushfires and access insurance savings through the new [Bushfire Resilience Rating App](#).

Special Guests from Natural Hazards Research Australia, Telstra, Resilient Building Council, Suncorp and the Chair of the Federal Regional Telecommunications Review Hon. Alannah MacTiernan

Bookings are essential

When: 22 April, 6.45pm - 8.30pm
Where: Mahogany Creek Hall,
 3060 Strettle Road, Mahogany Creek
RSVP: tania.lawrence.mp@aph.gov.au
 or scan the QR code to RSVP



Hosted by Tania Lawrence MP Member for Hasluck
with Matthew Hughes MLA Member for Kalamunda
and Jessica Shaw MLA Member for Swan Hills

Realmark

I'll ensure you're not undersold in the Swan Valley.

Do you want a fast sale, or a smart sale?

Don't settle for less; we employ a results driven approach to unveil your home's unique charm, ensuring you're sold, not undersold in the Swan Valley.



AMA joins call for govt action on child services

ANITA McINNES

THE AMA WA has weighed into the opposition's call for the state government to properly resource child development services, which the Health Minister Amber-Jade Sanderson has agreed are being challenged like never before.

East Metropolitan MLC Donna Faragher said new figures highlighted nearly 10,000 children waiting to access a paediatrician and more than 4200 children were on a wait list to see a speech pathologist in metropolitan Perth.

In response Ms Sanderson said the service was being challenged like never before, at a time when there is a worldwide shortage of paediatricians.

"As private paediatricians close their books to new patients, the state funded service does not turn new referrals away and in the past 10 years referrals to CDS paediatricians have risen by 132 per cent," she said.

AMA (WA) paediatrician representative Stephen Oo said the state government was well aware of the crisis in access to paediatric care.

"There is record demand in services, particularly in developmental paediatrics where this problem is proportionally worse, and it has prompted the formation



East Metropolitan MLC Donna Faragher says the child services sector is at crisis point and the state government needs to act. Picture: Anita McInnes

of a Parliamentary Inquiry and the formation of a Select Committee into Child Development Services," Dr Oo said.

"This committee's interim report was released in November 2023, making explicit that there has been a 52 per cent increase in referrals to child development services since 2013-14, and the last significant increase in staffing was in 2010.

"It is absolutely clear from all indicators that meaningful action is needed."

Mrs Faragher, who is opposition Early Childhood Education spokeswoman,

said the Health Department's Child and Adolescent Health Service had repeatedly applied unsuccessfully for additional funding with the government only able to find an extra \$300,000, up from \$35.7m to 'about \$36m', to support the metropolitan Child Development Service in 2023-24.

Mrs Faragher said the first report of the bipartisan select committee into Child Development Services made clear findings and recommendations about what could be done immediately to reduce unacceptable wait times and expand service provision.

Ms Sanderson said the government did not have many levers in the primary care space and new paediatricians could not be found or trained quickly, but they were committed to doing everything they could.

"It's why we stood up to the WA Health Workforce Summit and undertook a series of roundtable discussions, focusing on the workforce pipeline including medical specialists and the allied health workforce, and are resourcing the CDS to provide more autism spectrum disorder assessment appointments by doubling the number of paediatric registrars," she said.

"Patients are increasingly presenting with multiple conditions or diagnoses, or with complex social factors that impact care."

Hills kids take centre stage at Optus half-time



Hills kids enjoy the thrill of Optus Stadium.

GERA KAZAKOV

SEVEN eastern hills junior football clubs have taken their footy skills to the biggest stage in Perth – Optus Stadium.

Just under 90 children from the junior clubs of Mount Helena, Chidlow, Darlington, Mundaring, Parkerville, Gidgegannup, and Upper Swan all graced the stage at half-time during Fremantle's clash with the Adelaide Crows.

Mount Helena Junior Football Club president Narelle Thredgold – who's also the Swan Districts junior club delegate on the metro-central regional development council – said the children were all very excited before and after the experience.

"One seven-year-old told me that he was so excited that he got to kick the ball on the same oval in the same goal square as the AFL players do in a real game, and he even got to hear people cheering for him," she said.

She said the umpires for the half-time games were also from the district, with two also hills residents.

West Australian Football Commission Swans

participation officer Josh Embry helped get the kids on the field at half-time, and said this was the first time the juniors from all the eastern hills clubs got to go out together for a half-time kick.

"For any young footballer who has had the opportunity to play football at half-time of an AFL game – on the same field as AFL players do, in front of an enormous crowd – you will hear nothing but positivity and excitement," he said.

"It is ultimately an opportunity that drives young Auskick and little league footballers' passion for football and is a core memory that these kids will cherish forever."

Mr Embry said all the kids involved were overcome with the same emotion on the day – excitement.

"Not just because they were playing football at half-time of an AFL game, but because they were playing alongside all their friends from neighbouring clubs," he said.

"I've never seen so much energy from a half-time group of people as what was displayed at the hills junior clubs, and this came down to the fact that everyone who attended knew each other."

EMRC and Mundaring FOGO plan

EASTERN Metropolitan Regional Council (EMRC) and the Shire of Mundaring have joined forces to introduce the food organics garden organics (FOGO) household waste management system, set to launch on Monday, July 1.

Each household will receive a new 240L lime-green lidded bin designed for separating food and garden organic waste. Alongside the bin, residents will receive an information pack and a kitchen caddy, complete with a roll of compostable liners.

The initiative aims to redirect organic waste, including kitchen scraps, away from landfills, where its potential value would otherwise be lost. Instead, the FOGO bin with the organic waste



will be collected on a weekly basis to then be transformed into valuable organic compost.

The existing general waste bin will also undergo a change to a red lid in alignment with the Waste Authority's guidelines. This adjustment will enhance source separation and minimise contamination of waste streams and will occur sometime after the launch.

Effective communication and community engagement play a crucial role in supporting successful FOGO services.

To achieve this, the shire, in collaboration with EMRC, will introduce a behavioural change campaign to encourage positive waste disposal behaviours and community engagement.

The FOGO system will further reduce greenhouse gas emissions and waste sent to landfill, and furthers the commitment by EMRC and Shire of Mundaring to mitigate climate change at our regional and local level.

EMRC chief executive officer Marcus Geisler said by embracing the FOGO system, residents can actively contribute to a more sustainable circular future.



Welcome

Dr Adam Brewer to St John Dental in Midland

With a passion for excellence and a commitment to patient care, Dr. Brewer brings a wealth of experience to our clinic.

Services include:

- General check ups
- Root canal therapy
- Dental implants
- Crowns
- Complex restorations



← Scan to book or call 9260 5650

St John Dental

The Saleyard, Building 2, Unit 6-7, 8 Clayton St, Midland

Water Corporation project team.



Water projects to support housing and development in City of Swan

A NEW primary school in Henley Brook is among the first developments to benefit from a \$36.5 million state government investment in water and wastewater infrastructure in the City of Swan.

Delivered by Water Corporation, part of the project saw a 2.6km drinking water pipeline installed along Starflower Road and Park Street, Henley Brook.

In addition to supporting housing development in Perth's fast-growing northeast, the new pipeline had the taps flowing at Henley Brook Primary School for the start of the 2024 school year.

Water Corporation has also completed an 18km wastewater pipeline from Bullsbrook to Ellenbrook, and has constructed a new pump station.

The projects have diverted flows from the Bullsbrook wastewater treatment plant, supporting the Bullsbrook facility's closure.

The City of Swan is the fastest growing area in WA, and the ninth fastest growing region in Australia.

Although many properties are semi-rural, the population is expected to grow by almost 80 per cent by 2051 to 310,000.

To further support population growth in the City of Swan, the state government is investing

\$8.4m to build a 1.5km water pipeline from Dayton to Caversham.

The project started in December and is expected to be completed mid-2024.

Water Minister Simone McGurk said the Water Corporation was constantly planning ahead to ensure communities like those in and around Ellenbrook benefited from secure, reliable water and wastewater services.

West Swan MLA Rita Saffioti said the north-eastern suburbs were going through an exciting transformation, with work progressing on the Metronet Morley to Ellenbrook line and plans for a new recreation and aquatic centre in Ellenbrook.

"These projects are very important, and so are essential infrastructure works, which can often go unnoticed because pipelines are buried beneath our feet."

Swan Hills MLA Jessica Shaw said the City of Swan is growing faster than any area in WA.

"This means strong investment in new water infrastructure is essential to keep pace with growing demand.

"These projects will support current and future residents, and facilitate the creation of more housing options in Perth's north-eastern suburbs."

Midland's urban renewal precinct

IN a boost to WA's long-term housing supply the state government, through DevelopmentWA, has finalised the sale of key land within Midland's high-profile urban renewal precinct to Bluerock Projects.

Tuohy Garden Apartments will yield up to 51 apartments and will be available through an affordable build-to-rent initiative.

Bluerock Projects will both develop and operate as a professional landlord for the site. The new model aims to provide secure, long term, affordable rental accommodation and will act as a next step in the scaling up of delivery across the state.

Development approval has already been obtained for the site with construction anticipated to commence in the first half of 2024, with the first residents expected to be welcomed towards the end of 2025. The development will also incorporate 650sqm of ground floor commercial space.

The Midland town centre, where the apartment site is being devel-

oped, is an urban renewal program within walking distance of the future Midland Metronet station and in the heart of Midland.

Housing and Lands Minister John Carey said more than 50 new apartments were expected to be brought to the market through the innovative build-to-rent model.

"This is expected to be WA's largest timber frame apartment complex and feature a range of sustainability features to further reduce the cost of living such as the inclusion of solar panels and a smart metering system, alongside batteries utilising A1," he said.

"Other sustainable technologies include permeable paving systems for natural drainage, low carbon concrete and EV charging bays for visitors and residents."

Midland MLA Michelle Roberts said the apartments would provide tenants with a modern home in the heart of the state government's Midland town centre urban renewal program.



Government of Western Australia
Department of Justice

Forrestfield Police call for info on hills hooners

FORRESTFIELD police are urgently appealing to the public for assistance in their investigation into an alleged reckless driving incident in the central business district of Kalamunda on Sunday, March 24.

WA Police said about 9.10pm, a high-powered white Ford Falcon, carrying multiple males, was observed engaging in dangerous burnouts along Haynes Street before being tracked to the area outside the Hilltop Veterinary Clinic on Canning Road.

Subsequent sightings placed the vehicle on Kalamunda Road, where it performed a series of circular burnouts opposite Stirk Park before fleeing in a westerly direction.

Law enforcement authorities, including Forrestfield police, road policing intelligence and tactical intelligence officers, are actively reviewing CCTV footage and other available information.

They have called on the public for any additional details that could aid in identifying those responsible for the reckless driving behaviour.

Investigators are particularly interested in information about a small white vehicle, which may have been present near the Ford Falcon during the incident.

Any information regarding the occupants or movements of this vehicle could be crucial to the investigation.

Forrestfield Police officer-in-charge Brad Robinson expressed concern about the incident and emphasised the community's frustration with such behaviour.

Senior Sergeant Robinson urged anyone who witnessed the incident or had relevant information to come forward and assist with the investigation.

"We understand the public's concern regarding this type of behaviour, and we are committed to holding those responsible to account," he said.

"Your cooperation and assistance are vital in ensuring the safety of our community."

Anyone with information regarding the incident, including sightings of the white Ford Falcon or the small white vehicle pictured, is urged to contact Forrestfield Police.

Reports can be made anonymously and any information provided will be treated with the utmost confidentiality.

Forrestfield Police said public cooperation was instrumental in solving cases of this nature.

Contact Crime Stoppers on 1800 333 000 or 131 444.



Make
the
change

We're hiring Youth Justice Officers.

Make a positive difference in the community by helping young people turn their lives around.

Applications close **22 April 2024.**

Visit www.justice.wa.gov.au/yjo



SCAN FOR MORE
INFORMATION

ROTARY CLUB OF MUNDARING INC
MUNDARING MARKETS
SUNDAY 14TH APRIL 9am-2pm

Calling more members for Rotary of Mundaring

LOTS OF NEW STALLS!

We have moved to Sculpture Park, Mundaring

Call 0473 507 683 for more details

Come along this Sunday to
CHRCH
 The only thing missing is "U"

Grace Baptist Church

SERVICE TIMES
 SUNDAY SCHOOL: 9.30am
 FAMILY WORSHIP: 10.30am
 MIDWEEK PRAYER MEETING: 7.00pm

Meeting at: Brown Park Community Centre - Salisbury Rd, Swan View

Pastor: **Graham Thomas**
 Ph: 0425 354 159
 gbcmidland.org.au

Ellenbrook Service @3pm Woodlake Community Centre

"For by grace are ye saved through faith..."
 Ephesians 2:8



Bassendean roots out tree removal policy

GUANHAO CHENG

BASSENDEAN council has taken a clear stance on supporting the retention of trees through a motion that was carried at their most recent ordinary council meeting on March 26.

Bassendean Tree Canopy Advocates member Alex McKellar made a statement in favour of updates to policies aiming to limit the unnecessary removal of significant trees on private property by requiring development approval from the council before any works are undertaken.

In the same meeting, two different motions supporting the maintenance of tree canopies were also unanimously carried by council.

One motion proposed the Town of Bassendean look into all the ways Hamilton

Reserve could be turned into an "urban forest/living stream" or "regenerated wetlands" to expand the Bassendean urban tree canopy and vegetation.

It was noted within that motion the outlined solutions would assist in carbon capture, help ecosystems thrive and provide enhanced public health benefits.

The second motion focused on achieving a near continuous tree canopy on residential verges in all areas of the town to hit the target of 30 per cent tree canopy in the Town of Bassendean by 2040.

This decision comes after the City of Kalamunda chose to loosen their bylaws relating to the removal of trees on residential properties, as previously reported in *Applause as Kalamunda bins tree retention policy* (Echo News, March 1).

Kalamunda residents were divided at

the February 27 ordinary council meeting where some members of the public voiced their frustrations about requiring approval to remove trees on their property while others provided deputations in favour of the tree retention policy.

These latest council developments form part of a bigger conversation about the protection of significant trees on private land and preventing loss of canopy cover in urban areas across the state.

WA Local Government Association released a model local planning policy earlier in March, as previously reported in *LGAs move to protect mature urban trees on private land* (Echo News, March 15), to support local government efforts to maintain tree canopies by standardising the method councils can use to regulate tree removal.

Grants set to electrify LGAs

GERA KAZAKOV

THE City of Kalamunda and the shires of Mundaring and Northam are some of the 22 local governments set to benefit from a \$12.26 million project led by the WA Local Government Association (WALGA) which is aimed at reducing costs in the transition to electric vehicles.

City of Kalamunda Mayor Margaret Thomas said the city received \$76,626 from the WALGA project which will go towards purchasing and installation costs associated with electric vehicle chargers.

Ms Thomas said the grant will be used to install two chargers at the city's operations centre in Walliston, with another two chargers to be installed at the Kalamunda library carpark, which will be available for public use by the end of May.

"The public charger will accept credit card payments, making it accessible for everyone in the community," she said.

The Shire of Mundaring plans to use their WALGA grant to install six electric vehicle charging stations by the end of 2024.

The shire's chief executive officer Jason Whiteaker said that the charging stations will be for shire vehicles only.

"Charging stations for visitors will be considered in the future," he said.

The Shire of Northam said that it plans to use the WALGA grant "on fast tracking the installation of charging infrastructure to facilitate the transition to a more sustainable and eco-friendly fleet."

Australian Electric Vehicle Association president Chris Jones said while there currently isn't enough electric vehicle infrastructure between our major centres, the grants were good for councils looking to reduce their operational greenhouse gas emissions.

"The funds would allow plenty of public charging infrastructure to be installed, affording much better value for ratepayers.

"But if a local government has a few light vehicles which rack up significant mileage, the (electric vehicles) will certainly help save money and emissions.

"Considering they use a range of vehicles as part of their normal operations, electrifying their fleet is a great start."

The state government committed \$1 million towards WALGA's project, with the Australian Renewable Energy Agency committing \$3.51 million, while the 22 councils have committed to spending \$7.68 million on the project, according to WALGA.

WA Tree Festival is underway

THE third annual WA Tree Festival is underway with events held across the state from Saturday, April 6 to Sunday, May 5.

The festival was officially launched last Wednesday, March 27, in the Kings Park Botanic Garden but events won't start until this weekend.

This year up to 50 local governments, including the cities of Swan and Kalamunda, are participating, each with an assortment of events aimed to share the value of trees.

Events and activities cover a range of topics, including highlighting the importance of daily connections to nature, and the often-invisible benefits trees provide, to understanding issues around tree canopy loss, climate change and how everyone can help.

As part of the festival, some of the participating local councils are also offering free tree and plant giveaways, dependent on stock.

From April 12 until the end of the festival the City of Kalamunda is set to host artist Georgia Efford's newest exhibition 'Nature and Time' at the Zig Zag Gallery.

In addition to the exhibition, Ms Efford will also run several events throughout the month, both free and paid, discussing art, creativity, and nature.

While on April 18, local habitat gardener and passionate bird watcher Rachel Green will host an event at the High Wycombe library called 'How to attract more birds to your garden', a follow up to her husband Mike's bird watching last month.

The City of Swan has also organised several events as part of the festival including a worm farming workshop on the morning of Saturday, April 13, at the Verdant Vista Community Garden.

Another workshop on how to grow fruit trees in small spaces will be hosted at the Old Midland Courthouse on the evening of Wednesday, April 24.

TUCK IN MATE! OPEN IN THE HEART OF MUNDARING

Nicole Davies ★★★★★
 Lovely little casual place to eat - little bit quiet being a public holiday and located in a small shopping complex but the food was worth it!

First we tried the vegetable pancakes which were cooked fresh to order. An absolutely delightful start with 3 yummy sauces to accompany. Next we tried the chicken crepes, we were lucky enough to try both batters (rice and lentil). I was only going to try the rice but I am grateful chef suggested the lentil as it was definitely my favourite - crispy and full of flavour. The chicken inside was equally delicious and beautifully flavoured.

I also recommend trying the Mango Lassi which is made in-house! Yummo. We will return - definitely worth a try, and take away lesson is to try something new, it might just become your new favourite!

Weekly Dinner Specials South Indian Cuisine

✓ Dairy Free ✓ Gluten Free
 ✓ Vegan ✓ Nut free ✓ Egg Free

Curries, Dosas, Fish Tacos, Vada

LUNCH: MON-TUES-WED-SAT 11.00am-2.30pm
LUNCH & DINNER: THURS-FRI 11am-2.30pm AND 4.30pm-7.00pm

Professional Chef, over 20 years experience at Hyatt Regency and Crown in Perth.

Come in and try - you won't be disappointed!

M: 0412 029 061
 Shop 6 / 7025 Great Eastern Highway (opposite Woolworths) Mundaring
E: tuckinmate@gmail.com
www.tuckinmate.au

New deadline set for Satterley

ANITA McINNES

SATTERLEY has been given a June deadline to file a further amended North Stoneville SP34 by the State Administrative Tribunal (SAT) with strict parameters in place for any third party interventions or submissions.

On March 8 SAT made orders to progress the matter with Satterley required to file a further amended structure plan by June 14.

According to a SAT third party participation in planning matter info sheet there are four ways – being called as a witness by the respondent, making submissions under section 242 of the Planning and Development Act 2005, intervening in a proceeding under section 37(3) of the State Administrative Tribunal Act 2004, and possible participation in mediation.

Being called as a witness usually involves giving evidence on behalf of a respondent – in the case of the North

Stoneville structure plan the applicant is Satterley Group while the respondent is the Western Australian Planning Commission (WAPC).

Regarding intervention the State Administrative Tribunal Act 2004 says the Attorney General may, on behalf of the state, intervene in a proceeding of the tribunal at any time and the tribunal may give leave at any time for a person to intervene in a proceeding on conditions, if any, that the tribunal thinks fit.

A North Stoneville update by the Department of Planning, Lands, and Heritage (DPLH) – listed on the state government’s website – said following the submission of a further amended structure plan the respondent and applicant would each file a statement of issues, facts, and contentions and documents relevant to their case by July 12 and August 9 respectively.

“Applications to intervene under section 37(3) of the State Administrative

Tribunal Act 2004 or to make submissions under 242 of the Planning and Development Act 2005 are to be made to the tribunal by August 23,” the update says.

This follows an earlier advice note by the WAPC when it refused the amended structure plan on December 7 last year saying there were typographical and reference inconsistencies and discrepancies in the structure plan documentation that needed to be addressed.

The SAT third party participation in planning matters info sheet said a third party should usually first speak to the respondent or its representative if they wish to give evidence.

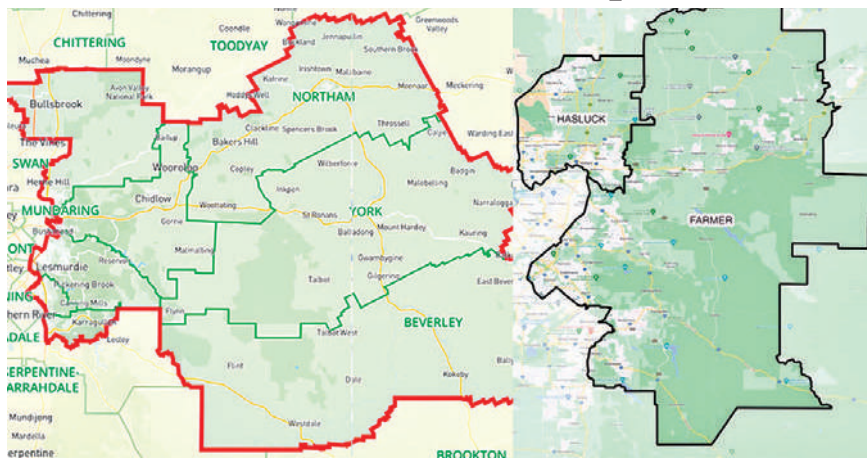
“Anyone giving evidence to SAT usually needs to prepare a witness statement of their evidence,” the info sheet said.

The DPLH update said Satterley is allowed to address the errors and provide clarification about certain issues to help streamline a final hearing for determination by SAT. **Continued page 18.**



Save Perth Hills at the Mundaring Arena.

Redistribution pushes on despite incorrect data



Left: The Liberal’s proposed seat of Court. Right: Labor’s proposed seat of Farmer.

GERA KAZAKOV

INCORRECT data given to the Australian Electoral Commission (AEC) by the Australian Bureau of Statistics (ABS) has not affected WA’s federal seat redistribution, according to an AEC spokesperson.

The spokesperson said members of the public queried the original statistics, leading the AEC to contact the ABS and receiving amended projection data in early 2024.

“It has not affected the proposal being made, or the timetable for redistribution, because the proposal was yet to be created

or announced when the revised data was received,” the spokesperson said.

“The proposal for WA’s federal boundaries will be based on the correct enrolment projections.”

In *New federal seat proposed for Perth’s east* (Echo News, December 1, 2023) electoral commissioner Tom Rogers said WA was entitled to another seat in the House of Representatives, increasing the number from 15 to 16.

Both the Liberal and Labor party’s proposals could see the Hasluck electorate shrink and be pushed further westward to-

wards Ellenbrook.

The Liberal’s proposal seeks to name the new seat after former WA premier Sir Charles Court and would encompass the Wheatbelt alongside Bullsbrook and hills suburbs such as Lesmurdie.

Labor’s proposal sought to name the seat after Graham ‘Polly’ Farmer with the seat covering the Perth Hills and foothills suburbs, taking the north-eastern hills’ suburbs out of Hasluck.

The electoral commission is set to release its determination of WA’s federal electoral divisions later this year on September 24.




New menu at The Lounge at Amaroo!

Discover a world of flavour and delight at The Lounge, nestled within the serene and award-winning Amaroo Retreat & Spa.

Here, culinary innovation meets impeccable service, creating an unforgettable dining experience for you and your guests.

Describing the culinary journey, our head chef remarked, “Our new menu is a fusion of collaboration, reflecting our team’s diverse cultural backgrounds. We’ve crafted dishes that are not only mouth-watering but also visually stunning, with a touch of bushtucker finesse.”

Bookings: www.thelounge.amarootreat.com.au

Need a night out?

The lounge is the perfect hill’s destination.

We are here to make your celebration special.

Birthdays, anniversary’s, baby showers and romantic date nights.

Let our attentive staff spoil you.

Dinner Menu

OPEN 7 DAYS A WEEK
2-COURSES \$75PP / 3-COURSES \$85PP

ENTREES

JAPANESE SCALLOPS (gf/df)
lightly seared, pickled ginger, seaweed salad & finger-lime aioli

GRILLED PRAWNS (gf/df)
wild caught Australian prawns with pepper salsa (tomato, red onion, paprika, chilli, pomegranate molasses & dried mint)

KANGAROO (gf/df)
thinly sliced with beetroot leaves, davidson plum & peppercorn vinaigrette

PORK BELLY (gf/df)
sticky BBQ glaze with smoked apple butter slaw

BLISS SALAD (gf/df/vg/nc)
cabbage, red onion, fresh mint, feta, pomegranate, pistachio, lemon & EVOO

FIELD MUSHROOMS (gf/vg)
with white bean puree, almonds & smoked chilli

MAINS

FILLET STEAK (gf/df)
chargrilled with potato, seasonal vegetables & jus

AMAROO CHICKEN (gf/df)
fusion marinated with fish sauce, chilli & coriander, Asian greens & steamed rice

MARKET FISH (gf/df/nc)
smashed potatoes, macadamia tabbouleh, lemon

GRILLED BBQ BROCCOLI (gf/vg)
a-top of muhamara - walnut, capsicum & smoked chilli, drizzled with smoked chilli butter & pomegranate molasses

Set within the private award-winning luxurious getaway Amaroo Retreat & Spa



**GIDGEGANNUP
SMALL FARM
FIELD DAY**

MAY 26, 2024

EXHIBITOR APPLICATIONS ARE NOW OPEN!

The 2024 Exhibitor Application form, Programme Advertising Request and Prospectus are now available to be downloaded online at www.gidgegannup.info and the Small Farm Field Day page.

THE COUNTDOWN BEGINS

- WORKSHOPS • ANIMALS • ENTERTAINMENT
- HONEY FESTIVAL • SLOW OLIVE FESTIVAL



Enquiries: 0418 928 549 | Ground space: 0437 780 459 or visit our website: www.gidgegannup.info
Gates open at 9am - Close 4.00pm | Adults: \$15, 16 years and under: free entry | **NO DOGS ALLOWED**



New Apple Computers
available from

Macs4u

for sale or available with **Studio19 Rental**
(2 School Terms or 6 Month minimum rental or purchase at any time)

- New MacBook Air M2- from **\$252/Term** or **\$84/month**
- New iMac or MacBook Air M3 - from **\$285/Term** or **\$95/month**

****Order or purchase over the holidays and receive a free large gourmet pizza voucher !! offer ends 13-4-24**

Data migration, software set-up, lessons on usage and security are all available with purchase or rental

Build-to-Order Refurbished Apple Computers
also available from

Macs4u

Unibody MacBooks with SSDs, Web Cams, DVD Burners and Up-To-Date Easy to use software - fr **\$330**

21.5 inch iMacs with SSDs, Web Cams, DVD Burners and Up-To-Date Easy to use software - fr **\$550**

****Order over the holidays and receive a free large gourmet pizza voucher !! offer ends 13-4-24**



Macs4u.au

Celebrating 21 years of retail in Midland

269 Gt Eastern Hwy Midland WA 6056
08 9274 7111 0410 501 441
info@macs4u.com.au




Kalamunda Show is ready to go

THE Kalamunda Show is on again after its record breaking attendance in 2023, with the 123rd show at Koster Oval in Kalamunda from April 12 to April 13 aiming to continue its tradition of bringing a variety of performances and activities for the community to enjoy.

Kalamunda Show chairman Wayne Garwood said the previous year's event was a resounding success despite relying on six members of the committee to pull it all together.

"Thank you to family and the many volunteers who assisted us in setting up and running the show. (We) couldn't have managed without them," he said.

"Without that community support every year the show would not be the same or even exist in the worst case."

Mr Garwood expects this year's show to continue on stronger than ever with 11 new committee members and additional helpers lending a hand organising the event.

The show will begin with fireworks and a Chinese Dragon Dance on Friday in preparation for the loaded program planned for Saturday.

The main day of the event features many musical and dance performances on stage, roving magic shows, and agriculture themed activities among the numerous other attractions that will be on offer.

As expected at an agricultural show, this event will have amusement rides, exhibitions showcasing the creative talents of the community, and unique stalls where attendants can buy showbags or get their faces painted.

Mr Garwood is excited for the attending children to experience all the free entertainment at the event, and hopes all are looking forward to the fireworks like he is.

"We are just a few days away from the 123rd annual show and it has all come together again," he said.

"It will hopefully be another magnificent show which is very much part of the City of Kalamunda."

"The show's motto says it all: 'our show, our community'."

"Please come to your show in 2024."

To volunteer at the Kalamunda Show contact Mr Garwood on 9293 3628.

Swan businesses leading the way with accessibility

THE City of Swan has launched a campaign to help local businesses become more accessible and reach more customers.

The accessible and inclusive business initiative encourages businesses to conduct a review of their premises to identify any accessibility gaps.

They can do this by completing a self-assessment, engaging a paid consultant or participating in a free program for businesses.

The results of the review will provide business owners with recommended improvements.

After implementing the improvements, businesses are encouraged to promote any changes they made to highlight their accessibility and inclusivity.

The campaign follows a highly successful pilot program involving 10 local businesses, including The House of Honey in the Swan Valley.

Almost 20 per cent of Australians live with disability.

Meanwhile, as the population continues to age, the number of Australians aged 85 and over is expected to more than triple in the next 40 years.

Making these improvements now means businesses will reap the benefits for years to come.

They can attract and retain a diverse customer base, potentially increase their annual turnover by up to 25 per cent and build a reputation as an accessible business.

"The city is committed to delivering a more consistent and coordinated approach to developing and implementing good access," City of Swan Mayor Tanya Richardson said.

"We want to help our businesses become more accessible and inclusive so that they can bring in new customers and employees."

"Not only is it beneficial for the businesses, but it also creates an inclusive and welcoming environment for the whole community."

Learn more: www.swan.wa.gov.au/improvement



Diverse access needs are met at The House of Honey in the Swan Valley.

Youth Market this weekend

AS part of KickstART, Perth's flagship Youth Week event, a mental health group is hosting a market stall this weekend aimed to support young artists, performers and small businesses.

The Bop N Shop youth market will be held at the Crooked Spire in Midland this weekend on Saturday, April 6 from 10am to 2pm and will feature free interactive games, fun activities and cool prizes to be enjoyed by all ages.

In addition, the Bop N Shop will be joined by youth services and organisations which will have more activities and resources available.

This event has been created by young people for young people, together with the support of headspace Midland, Youth Focus, the City of Swan and the Crooked Spire.

The purpose of KickstART, now in its 15th year, is to celebrate the young people in their communities, provide a platform to discuss important issues and to showcase their talents and contributions.

For more information on the festival visit www.kickstartfestival.org.au

Recycle only these 5



Cans



Plastic



Glass



Paper



Cardboard



GREAT Sorts know that RECYCLING is simple. It's about putting all these 5 items into the recycling bin at home. That's paper, cardboard and cans as well as plastic and glass (containers, bottles and jars). Nothing else, all these 5 and only these 5.



GOVERNMENT OF WESTERN AUSTRALIA



A Waste Authority Program

wastesorted.wa.gov.au

Subscribe to our monthly e-news on the City's website



Kalamunda View

News from your City | April 2024



Mayor's MESSAGE

I hope you have had an enjoyable and safe transition into April after the Easter long weekend.

With the commencement of school holidays, there are plenty of fun activities running throughout the City. There's interactive Storytime at the Kalamunda and High Wycombe libraries and the History Village has a Find the Wheel Treasure Hunt.

Hartfield Park Recreation Centre have a variety of activities to keep your young ones active, from sporting activities to our popular Kids Cooking Club. Places are limited so book in early to avoid disappointment.

On a positive note, I am thrilled to share that our wildly popular Plants for Residents Program is back for 2024. Over the past 26 years, the City has given away more than 246,000 native plants to residents, contributing to the establishment of vibrant gardens, verges and water-wise landscapes across the community.

This year the event will once again operate as a click and pick event, with more than 13,000 plants to be given away, with a limit of 15 plants per household.

This event is very popular and plant allocations book out quickly. Stay tuned on the City's website and Facebook page.

This program demonstrates the City's commitment to maintaining and enhancing our local biodiversity. As always, we appreciate your ongoing support and active involvement in enriching our local community.

Margaret Thomas JP
Mayor

Prohibited Burning Period Extended

NO BURNING ACTIVITIES ARE PERMITTED until 14 April. Due to the continued dry weather patterns and heightened fire danger, no permits for burning will be issued during this period.



SEED YOUNG ENTREPRENEURS PROGRAM

Are you a young person with a business idea that you need help getting off the ground?

The City of Kalamunda is calling out to anyone aged 15-25 with a business idea they want to pursue. Whether you are a foodie, artist, tech pro, online guru, beauty guru, designer or you may have a social enterprise idea, why not apply to grow your idea!

"Plant the seed and watch your idea grow"

The competition is a FREE opportunity for young innovators and entrepreneurs alike to compete for one of THREE prize packages as well as grow their skill set to transform their idea into a flourishing business.

Expressions of interest close Friday 17 May.

Visit engage.kalamunda.wa.gov.au/seed-2024 to submit your interest.

Brought to you by Kalamunda Chamber of Commerce, Hawaiian's Forrestfield and City of Kalamunda.



Discover new activities, opportunities and learn more about what the City of Kalamunda has to offer at the Connecting Communities FREE event!

Where: Hartfield Park Recreation Centre
When: Thursday 11 April | 9:00am - 12:00pm

Have Your Say

Being part of the community means having your say.

Join the conversation and contribute to matters happening in your City.

engage.kalamunda.wa.gov.au



FREE BARISTA WORKSHOPS

Calling all future baristas and hospitality aficionados The City and Dome Kalamunda is offering free workshops designed to equip you with essential skills for success in the hospitality industry.

Led by seasoned professionals, these workshops cover espresso machine mastery, customer interaction, and barista techniques. Attendees will leave with a certificate and the confidence to impress employers.

Workshops are open to Kalamunda residents, workers, and students.

Register now for upcoming workshops:

- Youth Workshop: Monday 6 May, 4pm - 6pm
- Adult (25+) Workshop: Tuesday 7 May, 4pm - 6pm

Visit engage.kalamunda.wa.gov.au to secure your spot and kick-start your hospitality career - hurry spaces are limited.



Coming September/October 2024



Public Agenda Briefing Forum
6:30pm, Tuesday 9 April
Administration Centre, Council Chambers
Ordinary Council Meeting
6:30pm, Tuesday 23 April
Administration Centre, Council Chambers
Visit kalamunda.wa.gov.au to view the Agenda

Learn more on the City's website: kalamunda.wa.gov.au



Get in touch

P 9257 9999 E enquiries@kalamunda.wa.gov.au



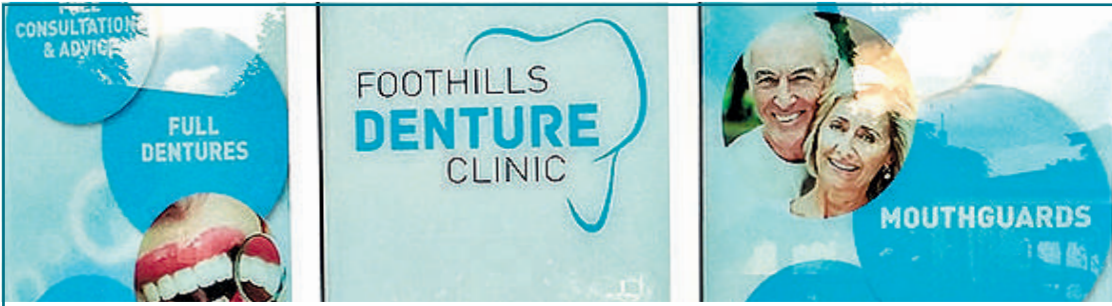
2 Railway Road, Kalamunda | PO Box 42 Kalamunda WA 6926

kalamunda.wa.gov.au



ADVERTISING FEATURE

Support Local



Protect your smile @ Foothills Denture Clinic

AT Foothills Denture Clinic, denture repairs can be done while you wait, and denture re-lines are usually a same day service.

Father and daughter team Malcolm and Raynee McArthur are both dental prosthetists, licensed to make all dentures including part acrylic and metal dentures.

The clinic is a Medibank Private Members Choice Provider and an HBF Members Plus Provider.

Rebates are available from all other health funds and we also deal with Veterans Affairs and offer pensioner discounts.

Special arrangements can be made for country clients to reduce the number of visits.

The team are happy to discuss any difficulty or query you may have with your denture – free of charge – and offer a professional service at a reasonable price.

For a free quote call 9250 1733.

SMILE

@ Foothills Denture Clinic

FOOTHILLS DENTURE CLINIC

Phone **9250 1733**
for an appointment

SHOP 4, 16 THE AVENUE, MIDLAND
www.foothillsdenture.com.au

- ✓ New full dentures & partial dentures
- ✓ New implant retained over dentures
- ✓ Denture repairs & relines
- ✓ Sports mouthguards

DENTAL PROTHETISTS

MALCOLM J McARTHUR

RAYNEE McARTHUR

We also deal with Veterans' Affairs and all health funds through HICAPS |



Tool enthusiasts to celebrate



DO YOU have a passion for, or are interested in “old hand tools”? Their history, modification, applications and uses. Maybe the HTPSWA is for you!

We share information on tools, collections and variations. We regularly display and demonstrate tools at numerous Shows, Events and functions throughout the year.

To celebrate 40 years since foundation and are celebrating with the “YESTER YEAR TOOL SHOW” on April 13 & 14 at the Old Midland Railway Workshop's. We are inviting all tool enthusiasts, collectors and Ex Workshop Employees and the general public to “Walk through Time” and view our displays, collections and demonstrations inside the Old Pattern Shop. Demonstrations include Blacksmithing, Post Boring, Green Timber Work, Adze and Saw Work. The BoilerRoom\ CopperShop and PowerHouse will be open to the public as part of this event.

The HTPSWA meets in the Boiler Room at the Old Midland Railway Workshops, Blacksmiths Lane the first Thursday of each month. New members are welcome. For more information visit our Web site or Face Book: Hand Tool Preservation Society WA.

The Handtool Preservation Society of WA
Is proud to present an
outstanding exhibition of

Handtools of Yesteryear

FREE ADMISSION

SATURDAY 13TH & SUNDAY 14TH APRIL 2024
9AM - 4PM

Bring the kids & take a walk through time.

Show them the tools Grandad & Dad used.

The Grand Midland historical
Railway Workshop Powerhouse
& Pattern Maker's Shop
Main Gate Street,
Midland Workshop Precinct

Sponsored by

Kalamunda Show Giveaway

Entries close 9am Thursday 11th April 2024

Kalamunda Show is giving one family the chance to win the ultimate prize voucher.

This voucher entitles one family (2 Adults & 2 Children) to the following: • Free entry to the show for 2 adults and 2 children • \$50 show bag voucher • 4 free ride passes.
Valid for Saturday 13th April 2024 only. To redeem prize present voucher to Show Office.

Name:

Phone:

Address:

Send / Email or drop off your entry to 'Kalamunda Show Giveaway'
karon.m@echo-news.com The Echo Newspaper, 4/9 The Avenue, Midland 6056
PO Box 317, Midland WA 6936

STRATTON & ELLENBROOK



Roast this weekend?



Shop **LOCAL** & SAVE MORE
Every DAY!

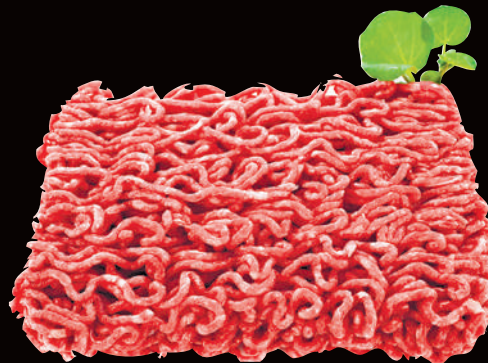
OPEN 7 DAYS - 7AM - 9PM

THURSDAY 4TH APRIL UNTIL TUESDAY 9TH APRIL 2024



CHICKEN BREASTS BULK TRAYS

\$9⁹⁹
kg



3 STAR BEEF MINCE BULK TRAYS

\$9⁹⁹
kg



LAMB LOIN CHOPS BULK TRAYS

\$14⁹⁹
kg



BEEF PEPPER OR GARLIC STEAK

\$14⁹⁹
kg



CRUMBED BEEF SCHNITZEL

\$14⁹⁹
kg



PORK SHOULDER ROAST

\$6⁹⁹
kg



BEEF BLADE ROASTS

\$10⁹⁹
kg



BEEF PORTERHOUSE STEAK BULK TRAYS

\$17⁹⁹
kg

STRATTON & ELLENBROOK



TRADING HOURS:
OPEN 7 DAYS 7AM-9PM

Specials available from 04/04/2024 until 09/04/2024 or while stocks last. Retail quantities only. No trade supplied. Pictures are for illustration purposes only. Savings are off regular prices. Some regular prices have been reduced to ensure you receive the lowest competitive price. Therefore savings shown may differ from savings shown in store.

ROYAL GALA OR GRANNY SMITH APPLES



Hot Price!
\$ 1.99
 kg

PINEAPPLES



\$ 1.99
 ea

ZUCCHINIS



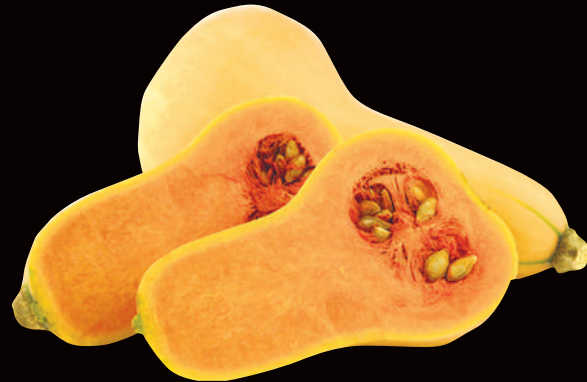
49c
 ea

RED OR GREEN CAPSICUMS



\$ 2.99
 kg

BUTTERNUT PUMPKIN



99c
 kg

PETERS 4L ICE CREAM



\$ 6.00
 ea

BABYLOVE NAPPY PANTS 42-56PK



\$ 20.00
 ea

NUTRI-MATE 3KG DOG ROLL



\$ 6.00
 ea

SUPERCOAT 7KG DOG FOOD



\$ 20.00
 ea

Stratton IGA - Stratton Park Shopping Centre

Farrall Road, Stratton WA 6056 | 6270 0797

Ellenbrook IGA 20 Sunray Cir, Ellenbrook WA 6069 | 9296 8902

Like us on IGAStratton

Like us on IGAEllenbrook

Specials available from 04/04/2024 until 09/04/2024 or while stocks last. Retail quantities only. No trade supplied. Pictures are for illustration purposes only. Savings are off regular prices. Some regular prices have been reduced to ensure you receive the lowest competitive price. Therefore savings shown may differ from savings shown in store.



Mayor's message

Kaya everyone,

It is a time for big announcements, with some of our highly anticipated major projects finally coming to fruition.

Our upgraded Swan Active Midland will reopen on Saturday, May 11, 2024.

We know it has been a long time coming and we appreciate your patience.

This \$30 million project has been a huge undertaking for the City and I assure you it will be worth the wait.

To become a member, visit www.swanactive.social/midland.

We have also launched the community education campaign for our three-bin FOGO (green food organics and garden organics) kerbside collection system.

This is a City-wide initiative to recover organic waste and turn it into useful products that can be used in our community, such as compost.

The first stage of the FOGO rollout is set to start this winter. Finally, we are proud to have received some significant awards in recent weeks for our projects and services.

Our Stock Road extension won the top prize at the Institute of Public Works Engineering Australasia WA Awards for Excellence 2024.

Our new City website received global recognition, winning Kentico's Site of the Year award in the government and municipal category.

And last but certainly not least, our commitment to embracing and empowering our multicultural community earned us the Local Government Award at the WA Multicultural Awards 2024.

What a fantastic reflection on our hardworking staff and our incredible, diverse community.

Tanya Richardson
Mayor, City of Swan



Engage with us



Altone Skate and Recreation Zone

The City is redeveloping the existing skate and recreation spaces at Altone Park and we invite you to share your ideas and preferences for the area.

Your feedback will play a pivotal role in guiding the redevelopment process and ensuring the area meets the needs and desires of our diverse community.

Go to swan.engagementhub.com.au/altonereczone



Ellenbrook District Open Space dog-prohibited area

The City of Swan intends to make the Ellenbrook District Open Space artificial turf area a dog-free zone at all times. If you visit or use this space, we encourage you to have your say on our proposal.

Provide your feedback by Sunday, April 7, 2024.

Go to swanengage.swan.wa.gov.au/dogofflead



Proposed Temporary Closure of a portion of Brooklands Drive, Henley Brook

The City proposes to temporarily close a portion of Brooklands Drive so the contractor can complete sewer works for the new subdivision on Henley Street.

The road closure would be for four months, from Friday, April 26, 2024 to Thursday, July 18, 2024.

Have your say by Wednesday, April 10, 2024.

Go to swanengage.swan.wa.gov.au/brooklandsdrive



What's happening

Trees for wildlife and trees for us

Join ecologists Mike and Mandy Bamford from 10am-12noon on Saturday, April 20 at Ellenbrook Community Library to explore the vital connection between trees, wildlife and our wellbeing. Go on an armchair tour of the weird and wonderful creatures which inhabit our City and learn how to create a wildlife haven in your backyard or balcony.

Step into volunteering

Have you thought about volunteering? Come along to a free information session from 10-11.30am on Tuesday, April 16 at Swan Volunteer Resource Centre. At the session, you will find out about the benefits and value of volunteering, your rights and responsibilities as a volunteer, how to find available positions, and much more. Call **9278 9690**.

Aveley Community Festival

Discover all things art, culture and sustainability at the Aveley Community Festival from 10am-3pm on Saturday, April 20 at Aveley Central Park. There will be plenty of free activities for the whole family. The City's FOGO and Resource Recovery Education team will be hosting a stall at the event, so come and say hello and learn more about waste diversion and resource recovery.



Visit our online event calendar for a full list of upcoming events in the City of Swan. Go to www.swan.wa.gov.au/events



ECHO Trades & Services

9374 6666
 classifieds@echo-news.com
 BOOK ONLINE: www.echonepaper.com.au

Air Conditioning

SPLIT AIR (08) 9250 8988
 AND ELECTRICAL LIC. AU58425
 MITSUBISHI ELECTRIC AP SERIES
 WALL HUNG SPLIT SYSTEMS
SERVICE, REPAIR & INSTALLATIONS
 4/135 CLAYTON STREET, BELLEVUE WA 6065
 www.airconservicecentre.com.au

Airconditioning & Refrigeration

ACR
 Lic. No. AU05609
 • Local Company
 • Local Prices
 • Reliable & Efficient
 • Pensioner Discounts
For all your airconditioning & refrigeration service & installation
9454 9945

Bobcats

BOBCAT - TRUCK EXCAVATOR ROCKBREAKER
 • Bobcat works, Earthworks & Truck Hire
 • Driveways - Removals / Prep / Construct
 • Excavation / Trenches / Drainage / Soakwells
 • Shed & Tank Pads / Rockbreaking & more ...
DAVE 0417 096 614
 DW Cartage & Earthworks

MIDLAND BOBCAT HIRE
 BOBCATS, 8 & 12 TON TIPPERS, MINI EXCAVATORS
 Free no obligation quotes and advice
Russell & Lynn Edwards
 Owner/Operator
Russell: 0417 957 597
 russlynn4@bigpond.com

Bookkeeping

OKBS
 Organised KAOS Bookkeeping & BAS Service
 Bringing Order to Your KAOS
 Bookkeeping - BAS Service - MYOB - Xero
 Specialising in Small Business - Trades - Home Business
Gerrit Ramage
 M: 0429 938 553
 E: gerrit@okbs.net.au OKBS.com.au

Brick Paving

STRAITLINE PAVING
 Specialising in all forms of brickpaving & limestone.
 RESTORATIONS & REPAIR WORK
 POOLS • DRIVEWAYS • PATIOS
 25 Years Experience.
 No job too big or small.
 Guaranteed work.
 Pensioners discounts.
 ALL AREAS.
PHONE JOE 0404 101 513

Carpentry

Carpentry * Joinery * Cabinetmaking and Home Maintenance Services
 • Doors • Decks • Skirting • Sash Windows
 • Robes • Kitchens • Flatpacks
 • Pergolas • Shelving • etc.
 Pensioners Discount Fully Qualified
 Free Quote Call Mal 0400 250 761

CARPENTER/CABINET MAKER
 Sash Window Repairs / Renovations,
 Kitchens, Laundries, Robes & Vanities made
 and fitted. Doors, Frames & Architraves.
 Skirting & Shelving. 40 years experience.
NO JOB TOO SMALL. Call Terry
0401 743 027 / 9295 0797
 telcocarpentry@bigpond.com

MORGAN CARPENTRY & MAINTENANCE SERVICES
 ALL ASPECTS OF CARPENTRY & MAINTENANCE WORK
 • 15yrs commercial & residential experience • Insured
 • Fully qualified, professional & reliable • No call out fee
 • Full police clearance • Pensioners discount
 Call Kevin **0450 538 596**
 www.morgancarpentry.com.au e:Kod.morgan@hotmail.com

Ceilings

CEILINGS & WALL RESTORATION
 ALL SMALL JOBS
 ALL REPAIRS & NEW ADDITIONS
 23 YEARS EXPERIENCE
9295 2041 OR 0402 270 688

Ceilings

CA INSTALLATIONS
 • Ceilings & Walls • All Facets of Ceiling Work
 • Domestic & Commercial • Office Partitioning
All Reno Work Local and Loyal
0409 953 369

Cleaning

Allcare Cleaning Services
 Established over 20 yrs
COMMERCIAL & RESIDENTIAL
 • Carpet & upholstery cleaning • Flooring
 (tile & grout, slate cleaning/vinyl strip/sealing &
 restoration) • Pressure Cleaning
 Call Colin **0416 241 591** allcarecs@gmail.com

Concrete

B.C. CONCRETE DESIGN
 Cracked Pea Gravel/Exposed Aggregate
 Crossovers • Shed Floors • Drives
 House Extensions • Patios
Bobcat & Truck
Call Anytime 0457 611 348

SUNJICH'S CONCRETE
 • Bobcat - Truck and Compaction
 • From Prep to Completion
FREE Quotes All Areas
 Call Zeljko
0417 902 301

TIGER CONCRETE
 FREE QUOTES • NO MESS NO FUSS
 Quality work, all types of concreting
Bobcat and Truck
Mike 0407 989 927

Driveways

ALLIED BITUMEN
 Free quotes
 Established 38 years
 All work guaranteed
 Fully insured
 Asphalt driveways - Crossovers - Carparks - Potholes
 Kerbing - Linemarking - Earthworks - Drainage - Trenches
0418 912 569 | 9454 4411
 alliedbitumen.com.au

Electrical

Mrs Fixit!
 Female Electrical Contractor
 For all your domestic & commercial electrical needs
 TV / ANTENNAS • LIGHTS • POWER POINTS • SAFETY
 SWITCHES / RCD'S • SMOKE DETECTORS • WHITE GOODS
 REPAIR & MAINTENANCE • HOT WATER SYSTEMS
MARDI GLADWELL 0430 035 345

Andrews Electrical Systems
 Established 25 years • High Quality Guaranteed
 Residential • Commercial • Industrial
 • Electrical Installations
 • Electrical Maintenance
 • Air Conditioning
 • Telephone and TV
 • CCTV and Data
 Call Andrew **0420 956 432**
 Email: andrewsesperth@gmail.com

Fencing

Julian Jones FENCING & GATES PTY LTD
 • Colorbond Fencing & Gates
 • All Slat, Pool & Security Fencing
 • Insurance Work & Removal
 • Automated Gates • Reliable Service
0408 288 622 #WARA1981

Flooring

Saints Timber Floor Sanding
 Level to Fine Sanding and
 Polishing of All Timber Floors
 For an obligation free quote
 call Terry 0417 916 351

Gardening

All Areas
FULL BLOWN GARDEN MAINTENANCE
 ABN: 77 592 171 029
 ✓ Rubbish Removal
 ✓ Dog Poop Removal
 ✓ Lawn Mowing
 ✓ Planting
 ✓ Weeding
 ✓ Pruning
 ✓ Hedging
 ✓ Yard clean ups
 ✓ Ride on mowing
 ✓ Pressure cleaning
 ✓ Bush fire ready clean ups
Free Quotes
 Fully Insured
 Police Cleared
Damien 0431 011 369

Gutter Cleaning

Bobtail Gardens Gutter Cleaning
Gutter Vac Services
 • Fully insured, registered business
 • Fully self contained vac truck
 • All waste removed from your property
 • Obligation free quotes, Senior discounts
Phone Phil 0429 179 577

Gutters

YOUR LOCAL GUTTER SPECIALIST
 PROFESSIONAL SERVICE & REPAIRS
 • GUTTERS & DOWNPIPES | NEW AND REPLACEMENT
 • METAL ROOFING | NEW AND REPLACEMENT
 • ROOF COATING AND RESTORATIONS
 • MAINTENANCE
 • LEAKS AND ROOF REPORTS
 • GUTTER CLEANING
 CONTACT PETE FOR A FREE QUOTE
9274 7663
 sales@prowestroofing.com.au
 prowestroofing.com.au

Handyman

EVOLVE BUILDING & MAINTENANCE
 • Renovations
 • Property Maintenance
 • Handyman
0432 139 879
 Fully Insured ABN #14173780409 garys081@gmail.com

• Pool Fencing • Gutter Cleaning
 • Furniture Repairs • Painting • Tiling & Paving
 • Carpentry & Joinery • Property Maintenance
 • High Pressure Cleaning
 Almost anything - just ask!
 Pensioners Discount Free Quote
Mal 0400 250 761

allwork HANDYMAN SERVICES
 SPECIALISING IN ALL INDOOR AND OUTDOOR HOME MAINTENANCE
 • Landscaping • Flat Packs • Painting
 • Limestone Walls • Reticulation • Brickpaving
 • Gutter Cleaning • Carpentry • General Repairs
 Contact Trevor **0424 130 555**

Landscaping

SKL Garden Design
 • Garden Rock Walls
 • Re-cycled Brick Paving
 • Old Gardens Re-Vamped
 • Regular Garden Maintenance
 • Wet Hire Mini Kanga Digger
Call Steve 0407 776 612

Maintenance

PP Maintenance
 ABN: 86 642 331 437
PAUL 0477 660 703
 paul.percudani@outlook.com
 • Painting (Interior & Exterior) • Demolition
 • General Repairs • Pressure Cleaning
 • Restoration Home or Office (pre sale or lease)

Looking for a tradie?
 Now you can find a tradie in the paper
AND on our website ANYTIME GO TO:
www.echonepaper.com.au

Painting

g & r burgess painting
 RP 7078
 • DOMESTIC & COMMERCIAL
 • QUALIFIED & PROFESSIONAL TRADESMAN
 • LICENSED
 • CUSTOMER SATISFACTION
 FOR A FREE QUOTE PHONE GEOFF ON
 Phone 0439 671 639

WA COMPANY PAINTING
 REPAIRS • INTERIOR • EXTERIOR
CALL TREV 0414 289 145
 WWW.PERTHPAINTING.COM
 DISC. AVAILABLE PERTH PAINTING CONTRACTORS REG 6173

JIM OLSEN
 Painter & Decorator
 FREE QUOTES - QUALITY WORK
 Reg# 3749
0430 339 118

Scott Howard Painting Service
 Reg. No. 4234
 21 years experience
 Touch-ups • Repairs • Residential & Commercial
 • Free Quotes • Reliable Service
 • Quality Workmanship
0409 299 452
 38 Cupello Drive, Swan View

Pest Control

MA'S PEST & WEED SERVICES
 • Servicing the Hills and surround for 30 years
 • Specialising in termite treatments and inspections
Free Quotes Sean: 0417 905 708

Plastering

PLASTERING RENDERING SANDFINISH
 ALL SMALL JOBS • RENOVATIONS
 REPAIRS • NEW ADDITIONS
23 YEARS EXPERIENCE
 Professional, Reliable & Friendly
 Ph Paul **9295 2041** or **0402 270 688**
 www.rossrendering.com

EASTERN HILLS PLASTERING
 ABN 6737 3874 693
 All Aspects of Plastering - Concrete Skim
 Coating - Acrylic Texture Finish - Renovations
30 YEARS EXPERIENCE FREE QUOTES
TONY 0406 675 211
 easternhillsplastering@outlook.com

ASK ABOUT OUR GREAT PRICES FOR TRADES

Plumbing

Hi I'm Local In Your Area Hot Water Expert
 ✓ Senior Discounts
 ✓ Upfront Pricing
 ✓ Fast Plumber
 ✓ Drains, Taps, Toilets
\$0 Call Out*
Plumbing Emergencies 24/7
6244 3226
 *conditions apply PL9956

Plumbing

Local Plumber Same Day Service
Hot Water Expert
 • Upfront Prices
 • Pensioners Save
 • Drains, Taps, Toilets
 • Burst Pipes, Gas
Emergency Plumbing 24hrs
6118 6368
 PL9956 *conditions apply

LOCAL PLUMBER
 PL9956
Same Day Service
Blocked Drain, Taps, Toilets
Burst Pipes, Hot Water
 *conditions apply
Same Day Emergencies 24hrs
9468 2581
 NO CALL OUT* + SENIOR DISCOUNT
Your Best Local Plumber!

The Tap Doctor

FOR ALL PLUMBING & GAS
 • Taps • Toilets • Hot Water Systems • Blocked Drains
 • Burst Pipes • Leak Detection

Call Today 1300 655 827
 Our Service Will Amaze You
 PL6703 www.thetapdoctor.com GF10208

Plumbing & Gas

True Blue Plumbing & Gas
 GF 11864 PL 7896
 Hot Water • Gas Fitting
 Burst Pipes • Renovations
 Leaking Taps • Blocked Drains
Ph Tom 0490 535 242

Reticulation

Reticulation and Landscaping
 • CABLE LOCATION SERVICE
 • DESIGN
 • INSTALLATION
 • MAINTENANCE
 36 years experience
 • PUMPS • SALES • SERVICE • MAINTENANCE
 email: paul@reticland.com.au
 Call Paul on 0412 900 145 or 9454 5762
 or Aaron on 0429 515 222

Reticulation 0433 366 655

Roofing

ROOF TILE REPAIRS
 For all your Roof Tile Repairs
 Contact David for a free quote on
0413 240 203 or 9255 4003
 Specialising in: Leak Repairs • Gutter Clean
 • Tiling • Re-ridging • Re-pointing

YOUR LOCAL ROOF SPECIALIST
 PROFESSIONAL SERVICE & REPAIRS
 • METAL ROOFING | NEW AND REPLACEMENT
 • GUTTERS & DOWNPIPES | NEW AND REPLACEMENT
 • ROOF COATING AND RESTORATIONS
 • MAINTENANCE
 • LEAKS AND ROOF REPORTS
 • GUTTER CLEANING
 CONTACT PETE FOR A FREE QUOTE
9274 7663
 sales@prowestroofing.com.au
 prowestroofing.com.au

ECHO Trades & Services

9374 6666

classifieds@echo-news.com

BOOK ONLINE: www.echonepaper.com.au

Roofing

AMC ROOFING
Specialising in
All Tiled Roofing
New Roofs
Maintenance & Repairs
Free Quotes - Aaron Carter
Mob: 0417 930 817

AR Specialist Roofing
Solutions for all your roofing needs including roof restoration, gutters, leaks, downpipes, sheeting, custom flashings, gutter cleaning, carpentry, house painting, roof cleaning, PATIO BUILDING.
Call Andrew
0410 669 184
arspecialistroofing@gmail.com

Roof Restoration

NOBLE ROOF RESTORATION
"THE ROOFING EXPERTS"
• All Roof Maintenance • High Pressure Cleaning
• Ridge Capping/Painting • Gutter & Downpipe Replacements • Delux/No Tech Roof Coatings
All Work Guaranteed! FREE QUOTES
FREE WHIRLYBIRD WITH EVERY ROOF COATING RESTORATION
Jason 0456 566 346
www.noblerooftrestorationrepairs.com

Septic Services

CHITTERING SEPTIC SERVICE
"Your business is our business"
Lic No T149 PL 9101 GF 16106
- LICENSED PLUMBERS & GAS FITTERS
- CONTROLLED WASTE REMOVAL
- SEPTIC & LEACH DRAIN INSTALLATIONS
0429 933 407

Tree Services

HILLS TREE SOLUTIONS
For all your Tree Lopping and Stumpgrinding Needs
• Locally owned & operated • Call 24/7
• Fully Insured • Cheapest Prices Guaranteed
• Hazen Power Accredited • Servicing All Areas
CALL 9295 6511 OR 0414 438 610

"Let's keep local people in work"
ECHO
www.echonepaper.com.au

Tree Services

TLC Tree Services has merged with
Payne's Tree Services
FREE QUOTES AND ADVICE
• MULCHING • LAND CLEARING
• STUMP GRINDING
• TREE LOPPING
Call Clint on **0455 132 014**
paynestreeservices.com.au

Looking for a tradie?
Now you can find a tradie in the paper AND on our website ANYTIME GO TO:
www.echonepaper.com.au

ECHO Classifieds

9374 6666
classifieds@echo-news.com
BOOK ONLINE: www.echonepaper.com.au

Electrician

LITL Electrical.
All types of electrical work.
Jeff Overton 0483 858 603.
EC14844.

Painting

FOR A PROFESSIONAL JOB for a reasonable price, phone Andrew 0413 158 763.

Gardening

GARDEN MAINTENANCE
Available by horticulturalist with Dipl Hort. Call Annette Ecoflora Design on 0418957388.

AAA PAINTING INTERIOR/EXTERIOR

For very competitive prices and old fashioned service Ph Nathan on 0409 247 293 (Reg. No. 6605).

Bilby's Garden Services

Weeds, Prune, Mow & Slash. Free Quotes 0416 855 335.

Plumbing

MASTERS PLUMBINGAS
All Plumbing & Gas work, Blockages, Hot water units, Leaks, Renovations, Burst pipes. 24/7 Emergency Service. NO CALL OUT FEE
David: 0416 644 191.
PL-9554 GF-011284

Ian Mac's whipper

snipping, chain sawing and weeding. Small tree lopping jobs. 0426 211 137.

Regrouting

Bathroom Regrouting.
Call Andrew 0413 158 763.

K&S Gardening Services.

Focusing on Eastern region, Kalamunda. All services. 0412 477 777.

Roof Coating

Respray roof, repairs & coating. Ph Markus 0433 958 025.

Gutter Cleaning

Gutter cleaning & solar panel cleaning. Jason 0421 455 546.

Solar Services

Solar Panel Cleaning with Anti Mould & Solar Wax Treatment. 0421 455 546.

Handyman

High Pressure Cleaning. Odd jobs. Internal & external paint. Ph Markus 0433 958 025.

Wanted

Handyman/Gardener at horse property Baskerville suited to a retiree. Reg 5 hrs 1 day p/w. Duties: gardening, mowing, hedging, whipper snipper, maintain electric fence, gutters. Equipment provided Cash. Call Ronnie 0419 917 756.

Hobby Farm Services

Slashing, mowing, wool buying, firebreaks & property cleanups. Ian 0458 510 048.

Window Cleaning

Tatania's Window Cleaning. Tracks. Frames & Fly screens. 0467 282 127.

Lawn Mowing

Tony's Lawnmowing, Handyman & Firewood. Cheap rates. Midland & Surrounding Areas. 0431 831 948.

Painting

Painting, Gardening, Pressure Cleaning. 0477 660 703. Local.

Public Notices

CITY OF SWAN

PROPOSED BRABHAM STAGE 3 LOCAL STRUCTURE PLAN FOR LOT 822 YOULE-DEAN ROAD, BRABHAM

You are invited to comment on the above proposal before Council considers it further.

This is an Applicant-driven Structure Plan submitted by CLE Town Planning + Design on behalf of developer Peet seeking the residential development of land on the lot.

Note: the advertising of the Structure Plan does not indicate any formal support of the proposal by the City of Swan or the Western Australian Planning Commission.

The proposal can be viewed on the City's website (details below) under Proposed Structure Plans during the advertising period 2 April to 15 May 2024.

<https://swanengage.swan.wa.gov.au/planningconsultations>

Alternatively, you may view the documentation at the City of Swan Administration Centre, No.2 Midland Square, Midland between the hours of 8.00am and 5.00pm Monday to Friday.

Should you wish to comment on this proposal you may do so via an online submission on the above website before the submission closing date. If you do not have access to the internet written submissions can be delivered to City of Swan, PO Box 196, Midland, WA, 6936, quoting reference SWAN-SP/2024/1.

SUBMISSIONS CLOSE: Wednesday 15 May 2024

Stephen Cain
Chief Executive Officer
City of Swan
PO Box 196, Midland, 6936

CITY OF SWAN

PROPOSED BULLSBROOK SOUTH STRUCTURE PLAN MULTIPLE PROPERTIES IN BULLSBROOK (APPROX. 187HA COMBINED)

You are invited to comment on the above proposal before Council considers it further.

This is an Applicant-driven proposal submitted by Rowe Group on behalf of Mirvac to guide the urban subdivision and development of multiple properties in Bullsbrook (approx. 187ha combined) generally located east of the Great Northern Highway and north of Stock Road.

Note 1: The Applicant has obtained the necessary consent from the Western Australian Planning Commission for this Structure Plan proposal to be lodged and advertised before the land's urban deferment is lifted.

Note 2: The advertising of the Structure Plan does not indicate any formal support of the proposal by the City of Swan or the Western Australian Planning Commission.

INSPECTION OF PLANS AND DOCUMENTS:

The proposal can be viewed on the City's website (details below) under Proposed Structure Plans during the advertising period 2 April 2024 to 15 May 2024.

<https://swanengage.swan.wa.gov.au/planningconsultations>

Alternatively, you may view the documentation at the City of Swan Administration Centre, No.2 Midland Square, Midland between the hours of 8.00am and 5.00pm Monday to Friday.

Should you wish to comment on this proposal you may do so via an online submission on the above website or in writing on or before the submission closing date. All written submissions should be addressed to the undersigned, City of Swan, PO Box 196, Midland, 6936, quoting reference SWAN-SP/2024/2

SUBMISSIONS CLOSE: Wednesday 15 May 2024

Stephen Cain
Chief Executive Officer
City of Swan
PO Box 196, Midland, 6936

ECHO Notice Board

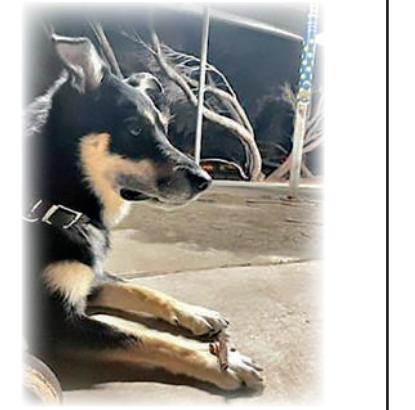
Upcoming Events

- **Kalamunda Senior High School P&C Association's** annual general meeting will be held at the school on Tuesday, April 30 at 6.30pm. All welcome. For more information email the secretary at kshspc.sec retary@gmail.com
- **The Probus Club of Kalamunda** meets on Wednesday, April 10 at the RSL Club, 35 Canning Road, Kalamunda, (two doors from Dome) at 9.30am for registration. The guest speaker will be Murray Hall whose topic is Walk a War in My Shoes. Morning tea is available. Visitors most welcome. For more information call Don on 04300 700 38 or Leah on 9291 4163.
- **The Kalamunda Ladies Probus Club** meets at 10am on the second Thursday of each month at the Kalamunda RSL Club, 35 Canning Road, Kalamunda (two doors from Dome) at 9.30am for 10am start time. They have a guest speaker at each meeting and a monthly bus outing to different interesting places. Socially they meet for coffee monthly and lunch also monthly at different venues in the area. Probus is a social club for retirees who enjoy life. For more information contact their secretary Trish on 0468 309 823 or membership officer Juliette on 9293 4438.
- **Mundaring Probus Club's** speaker on Monday, April 8 will be author and photographer Talitha Houston. Copies of her book Birds of the Perth Hills will be available for purchase. The meeting starts at 10am at the Glen Forrest Sports Club, Glen Forrest. Call 0412 427 533 to RSVP.
- **A new Justice of the Peace service** will operate from Brown Park, Salisbury Road East, Swan View from 10am to noon on Wednesdays. The JP will be available for all witnessing, certifying, taking oaths and affirmations. Remember to take photo ID. The service is voluntary so contact the Boya Library on 9290 6755 to confirm. The new service is the result of a partnership between Shire of Mundaring and the Swan Midland branch of the Royal Association of Justices WA.
- **World Vision Mundaring and Hills** support group holds its monthly stalls on the second Saturday of the month in the Woolworths mall in Mundaring. Call Suzanne on 0452 075 371 or Kryssie on 0431 570 985 for more information.
- **CWA Kalamunda** meets on the second Friday of each month at 10am on Central Road, Kalamunda behind Aldi, look for the blue tree. Come join in the fun and meet new friends.
- **Mundaring Garden Club** meets every second Tuesday in Mundaring. The annual program includes entertaining guest speakers who present on a wide range of topics. Presentations

are followed by morning tea in the club café. For more information call the secretary on 0414 303 985.

Noticeboard is for non-profits and community groups advertising free/low cost events/programs. Entries must be emailed to editorial@echo-news.com two weeks before the event.

Woofers of the week



Janey is a two-year-old kelpie cross. She is well behaved but she needs a home with good fences as she can jump. She is sterilised, vaccinated and microchipped. Costs apply. Contact Bakers Hill Dog Sanctuary on 9574 1438.

Public Notices

ADVICE ON RESTRICTED BURNING PERIOD BURNING PERMITS REQUIRED FROM MONDAY APR 1, 2024 UNTIL FRIDAY MAY 31, 2024 INCLUSIVE

You can apply for a permit online on the City of Swan website www.swan.wa.gov.au/Fire or in person by visiting your local Volunteer Bushfire Brigade. Station opening hours and additional fire related information is available on the website or by calling the City of Swan Customer Support Centre on 9267 9267.

Note: Due to seasonal weather conditions, permits may not be issued in some instances or further conditions imposed at the discretion of the Fire Control Officer.

Stephen Cain
Chief Executive Officer
City of Swan
PO Box 196, Midland, 6936

ECHO NEWS

Indemnity and Warranty

ECHO NEWSPAPER CONDITIONS OF ACCEPTANCE

When an individual or other legal entity ("the Customer") requests Echo Newspaper ("Echo") to place an advertisement in this Newspaper, they agree to be bound by the following terms and conditions:

1. Echo, at its sole discretion, may decline to publish any advertisement requested by a Customer. If Echo decides not to publish a particular advertisement, there is no obligation on Echo to disclose the reasons for its decision, and Echo will not be liable for any loss or damage occasioned to the Customer as a result of the decision.
2. Echo will not be liable for any loss or damage caused to a Customer as a result of delay or as a result of Echo failing to place a requested advertisement or publishing an advertisement containing an error or omission.
3. Echo may, at its sole discretion, decide to refund a Customer a portion of the cost of the advertisement if it forms the view that the error was not attributable to the Customer and the Customer notifies Echo of the error or omission before 5.00pm on the day the advertisement first appears in the Newspaper.
4. Complaints concerning the accuracy of any invoice must be notified to Echo within 30 days from the end of the month in which the advertisement was published, after which time the Customer forfeits any rights it may have had to challenge the invoices.
5. The Customer warrants that publication of the requested advertisement/s will not contravene any laws, whether statutory, equitable or otherwise, and agrees to wholly indemnify Echo (and its employees and agents) against all expenses, loss and damage arising directly or indirectly from the publication of the advertisement/s.

Perfect start for Swans season

CHRIS PIKE

AFTER a string of heartbreaking tight losses to start the 2023 season, a winning start to 2024 was the order of the day for Swan Districts and that came to fruition with a 64-point victory over the West Coast Eagles at Steel Blue Oval on Saturday.

Swans didn't have it all their own way throughout the day, but six goals to one in the second quarter, and eight to one in the fourth set up the eventual 21.11 (137) to 10.13 (73) victory.

The victory means that Swan Districts is still yet to lose to West Coast in the WAFL with the two teams having now played one another nine times.

Swan Districts has been calling out for a spearhead in attack and Leigh Kohlmann is back at the club and playing his first league game since 2020, he produced a career-best performance in the win on Saturday. Kohlmann ended up kicking six goals from 10 kicks and eight marks to make it the first time he's kicked more than three goals in a WAFL game.

Swans had plenty more scoring avenues as well with Jiah Reidy lively kicking three goals as did Jackson McLachlan while Tom Edwards, Jesse Turner and Ayden Cartwright all chipped in with two.

The Swan Districts midfield was dynamic too and the addition of recruits Jye Chalcraft and Nik Rokahr paid immediate dividends. The pair won their team's fairest and best awards last year with Geelong in the VFL and Norwood in the SANFL respectively, and showed why in their WAFL debuts on Saturday in spectacular performances.

Chalcraft finished with 35 possessions, six marks and three inside-50 entries with Rokahr producing 32 touches and nine marks while co-captain and reigning Swan Medallist Jesse Turner had 29 touches and 14 marks to go with his two goals.

Jarvis Pina also racked up 26 disposals, Aidan Clarke 23, Josh Cipro 22, McLachlan 19 and Will Collins 17.

It took less than two minutes into the game for Swan Districts to kick the first goal courtesy of the returning Leigh Kohlmann who instantly showed what a strong target in attack he will be.

The flying start continued with another to Jiah Reidy and Swans had two on the board inside three minutes, but they wouldn't add another in the quarter.

West Coast did manage two goals themselves which cut the Swan Districts lead to just a point by quarter-time.

Swan Districts were then going to the scoring end in the second quarter and took full advantage starting with a goal to co-captain Jesse Turner after just a couple of minutes.

Kohlmann then caught fire up forward in stunning fashion to kick the next four goals of the game to be proving quite the



Swan Districts mens side defeated the Eagles by 64-points in their round one clash.

imposing presence. By the time he kicked his fifth goal of the game, 19 minutes into the second term, Swans were in control leading by 29 points.

That would remain the half-time margin and while a goal to Nathan Blakely to start the second half pushed that lead out to 35 points, West Coast then picked up some momentum over the next 20 minutes to make it a real contest again.

The Eagles were able to kick six goals in just over 20 minutes and threatened to take the lead getting to within two points on two separate occasions before three quarter-time.

However, late goals for Swan Districts to Turner, Josh Cipro, Brad Lynch and then a sixth to Kohlmann were enough to steady things for the black-and-whites and make it a 21-point margin again by the last change.

Swans might have only added one more goal in the opening 10 minutes of the last quarter, they soon put on the afterburners kicking another seven goals to one in the space of the next 20 minutes to secure the win.

Removal of wine tariffs not an easy path back to China

From page 3.

"But that will be a while – we're just trying to fill a space up there in Hong Kong and Singapore which is still tough because of the door being shut but that'll be the main one, it might actually open a few doors to the rest of South East Asia."

Sandalford Wines chief executive officer Grant Brinklow said the removal of the wine tariffs meant the winery would be able to resume their partnership in China with a distributor there that dated back more than 20 years.

But Mr Brinklow said while Australian wines were recognised as high quality and brands like Sandalford were known to have had a national distribution footprint across China before, it would not be easy for the industry to walk straight back into the Chinese market.

"We've been out of the market now for two years and in that time Chinese consumers weren't pinning for Australian wine they were able to find good substitutes from Chilli or France or Argentina or New Zealand," he said.

"Other things have happened in China in that time – first of all their economy up there has softened enormously and they've got economic problems up there that they never had before and that flows through – there's certainly a slowdown in discretionary spending on wine.

"There is also the continuing emergence of the Chinese wine producing industry (it started emerging 20 years ago) they grow grapes to make good wine in China.

"These will make the challenge of re-establishing footholds in the Chinese market again – not to say it can't be done but it's going to take enormous resolve, enormous commitment, determination and investment in shoe leather – being on the ground in markets talking to people."

New Satterley deadline

From page 7.

"The order does not allow the applicant to substantially change the structure plan proposal," the update says.

North Stoneville, which proposes a new townsite in the Perth Hills, was first refused by the WAPC in July 2020.

Satterley then applied for a SAT review of the WAPC's refusal and in November 2022 ordered the applicant (Satterley) to provide an amended structure plan and supporting information to the respondent (the WAPC) and also asked the respondent to reconsider their refusal.

The amended structure plan was advertised for public comment between March 10 and May 8 last year.

Interested parties including the community, Save Perth Hills, the Shire of Mundaring, the City of Swan, and government agencies such as the Department of Fire and Emergency Services were invited to provide comment.

The WAPC was given an extension to reconsider the amended structure plan to allow referral agencies more time to assess Satterley's traffic and bushfire modelling.

On December 7 last year, the WAPC refused the amended structure plan following the recommendation of the statutory planning committee on November 30.

Bassendean and Swan begin boundary talks

From page 3.

conducted a special council meeting just two days before the City of Swan was due to discuss the original February 5 motion.

By absolute majority the town resolved a motion requesting the chief executive officer Cameron Woods immediately inform the City of Swan that the Town of Bassendean is a willing partner in boundary adjustment discussions.

Two days later at the City of Swan's ordinary meeting council voted, 11 for and four against, to engage with the Town of Bassendean and collaborate to develop a joint proposal in relation to potential boundary changes for consideration by the Local Government Advisory board (LGAB).

A Town of Bassendean spokesperson said the two local governments have begun communication, but what suburbs and boundaries this will affect are yet to be determined.

Regardless, any potential realignment of boundaries between the two local governments is sure to be a lengthy process and will ultimately come down to the LGAB.

Local Real Estate

**Residential
Commercial
Rural & Country**


Wow your guests at Wooroloo

THIS contemporary home offers a comfortably spacious dwelling perfect for raising a modern family in.

With five bedrooms and two bathrooms on a 2011sqm plot of land, homebuyers won't worry about having enough space to accommodate family and friends at their new property.

The generous driveway provides lots of parking for holding bigger functions without clogging the street with guest cars, and includes a drive-through gate offering overspill in the fully fenced rear yard if needed.

Visitors can make the most of the large rear yard for activities or escape to the alfresco to wind down while still enjoying the outdoor air.

Inside, the property is designed with neutral décor accented by modern touches such as wood grain patterning, sleek opaque glass paned doors and elegantly slim silver handles throughout.

Whip up a feast for all with the amply spaced open plan kitchen and dining area. It has stone bench tops, an integrated dishwasher, a five plate stove-top, under bench oven, double sink and a large walk in pantry that allows for an unrestricted cooking experience.

The heat won't be an issue either with the ducted reverse cycle air conditioning system that the property is fitted with, or the solar

panels that can help save on electricity bills.

Off the informal living area, tucked behind double doors, is a second multipurpose area. There is also an enormous theatre lounge positioned at the front of the home.

If friends need to stay the night, they can be treated to a guest bedroom featuring a semi-ensuite arrangement and all the modern trimmings that define the rest of the house.

Hosts can then retreat to their master bedroom with "his and her" walk in robes and an ensuite with double vanity, bath, shower and separate toilet.

A family bathroom, toilet, spacious laundry, massive four door linen cupboard providing plenty of storage and a separate cupboard to house your modems and appliances are located in the secondary bedroom wing of the home.

The property is situated in a lovely estate within easy walking distance to the primary school.

Address: 6 Truslove Street, Wooroloo
Price: Low \$700,000s
Agency: Professionals 5 Star
Contact Tim Kantor 0410 275 600

I Remember When...



Do you remember when you were lucky enough to order your lunch from the canteen or local shop? I saw on social media the other day the old paper bag with a lunch order written on it and brought back some memories. I think my first lunch order cost me twenty cents and that was a sandwich and a drink. 1973 when I started school at Govo a buttered roll was five cents and a vanilla slice was seven cents so when you had fifty cents for your lunch it was a feast. Local footy is about to kick off with the mighty Swans kicking off their season. I spent many a home game sitting on the hill in the pocket near the score board as a teenager and into my twenties having a yell and a stir. Was a good time to say hi to a few people as well. A lot of people always seemed to have their favourite spot to watch the game. Sitting with a local crowd watching guys you played against in juniors or played alongside was part of the thrill as they represented the club you supported. Not sure it's the same today with the AFL games, guys don't get that chance but the WAFL games are still worth watching and I still get to see some games every year. I was chatting with few mates talking about our junior footy days and Swans and while we were reminiscing I told the guys about an intra club game I played down at Swans with the league guys when I was about seventeen. I thought I was going ok, had a couple of kicks, taken a couple of marks, thought I had arrived until I decided to try and tackle Keith Narkle. He went past me as if I didn't exist and then I tried to chase him down, well it was like watching a snail chase a rabbit I had no hope. The mental scars are still there but looking forward to watching Swans again this year. Hopefully I see you down there.



Milton Rendell – CEO
Real Estate Plus Group

REAL ESTATE Plus

.com.au



CHIDLOW
9572 4113

MIDLAND
9274 5000

COMMERCIAL & INDUSTRIAL
6146 3333

SHELLEY

\$500 PER WEEK



COZY PROPERTY SITUATED IN A GREAT LOCATION

3/49 Mosaic Street East

- 2 Bedrooms with robes
- 1 Bathroom
- Private courtyard
- Low maintenance
- Spacious Unit

Leasing Officer 9274 5000

MIDLAND

\$450 PER WEEK



ONE BEDROOM EXECUTIVE APARTMENT

62/5 Junction Parade

- 1 Bedroom with robe, 1 Bathroom
- 1 Car Bay
- Top Floor North Facing for glorious winter warmth
- Air conditioning for summer
- Safe & Secure, lock up & leave
- Well equipped kitchen with island bench

Leasing Officer 9274 5000

SHELLEY

\$500 PER WEEK



COZY PROPERTY SITUATED IN A GREAT LOCATION

4/49 Mosaic Street East

- 2 Bedrooms with robes
- 1 Bathroom
- Private courtyard
- Low maintenance
- Spacious Unit

Leasing Officer 9274 5000

MIDLAND

\$530 PER WEEK



SECURE AND CONVENIENT APARTMENT

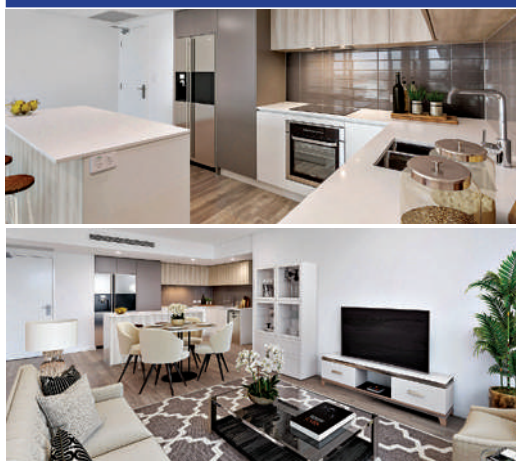
5/29 Frederic Street

- Two large bedrooms
- Spacious open plan living area
- Well appointed kitchen with stainless steel appliances
- Split system air conditioning
- Separate lockable store room
- Own balcony

Leasing Officer 9274 5000

MIDLAND

\$530 PER WEEK



HEART OF MIDLAND CATALYST EXECUTIVE

26/5 Junction Parade

- 2 Bedrooms, 1 Bathroom
- Air conditioning
- Balcony facing South, views of the City of Perth
- Safe & secure, lock up and leave
- Well equipped kitchen with island bench

Leasing Officer 9274 5000

SWAN VIEW

\$650 PER WEEK



RENOVATED SWAN VIEW DELIGHT

6 Manson Road

- Spacious open plan living area
- Gorgeous floor boards
- Well appointed kitchen
- Stainless steel appliances and dishwasher
- Split system air conditioning
- Shed

Leasing Officer 9274 5000

REAL ESTATE Plus

Plus LOANS
ACL: 383 631

Plus Your Settlements

NOW OPEN NEW HORTON ROAD GRAVEL PIT

B&J Catalano's Horton Road Gravel Pit located at Horton Road, The Lakes (just north east of the Great Eastern Highway/Great Southern Highway intersection) can supply ex pit, or deliver bulk loads.

Materials available suit landscapers, road or driveway construction, and other businesses requiring crushed and screened materials for road construction and landscaping.

Available materials include:

- Processed 25mm gravel to MRWA specification 501
- 12mm ferricrete horton red

Minimum pick up and delivery load amounts (by tonne) apply.

Call for:
location details,
pit opening hours, and
pricing information

9274 7676
www.catalano.com.au



All Australian Made on Site

**- Reduce the Heat and Wind -
35% Factory Direct Discount!**



AUSSIE OUTDOOR BLINDS



Therma Window Blinds



FREE MOTOR UPGRADE



Aussie Outdoor Midland is a locally owned and operated business. We use structural grade AUSTRALIAN Aluminium to manufacture our blinds and the best quality materials available. This ensures you have a high quality product backed up with comprehensive warranties that will last many years. We have a range of blinds to suit your lifestyle and budget.

Our current offer is a FREE MOTOR UPGRADE (7 year replacement warranty) for all Interlock blinds. Interlock blinds have a 50 knot (92km/hr) wind rating plus a 10 year warranty on the mesh. The mesh has a range of features to ensure longevity and a large colour range. You can match the mesh and frame to existing colours or the new range of colour bond mesh colours.

Alfresco Classic blinds can be made with mesh or pvc, clear or tint. A great solution for year round outdoor entertaining in comfort and style. Keep your outdoors clean and comfortable all year!

The show room at 1/6 Elmsfield Road, Midvale has an outdoor display as well as an indoor display.

Call 9274 0555 for an obligation free appraisal.

**FREE
MOTOR UPGRADE
FOR INTERLOCK
ZIPLESS BLINDS**

SPECIAL RUNS TILL 30TH APRIL 2024. T&C'S APPLY.

SHOWROOM

1/6 Elmsfield Rd, Midvale 6056

(08) 9274 0555

(08) 9249 1211

E: midland@aussieoutdoor.com.au

www.aussieoutdoor.com.au

