

# ECHO NEWS

SINCE 1985

Friday, July 12, 2024

Certified Practising Conveyancer Independent Settlement Agent

YOUR SETTLEMENT YOUR CHOICE



Anne Lynch  
CONVEYANCING  
Property Settlement Agents

Licensee: Anne Lynch P: 9572 2200 M: 0419 572 297  
3 / 7145 Grt Eastern Hwy, Mundaring  
E: annelynch@conveywa.com.au

Local Business Supporting Local People

VOL.42 NO.1872



**PG3** Noise wall decision due soon



**PG6** Red Hatters are expanding



**PG17** Swan View belt Mt Helena

# Fighting climate change

Thousands of native trees were planted in Caversham by community volunteers in an effort to fight the impacts of climate change and reverse damages to wildlife habitats. **PG 6**

**CARING FOR YOUR PETS**  
DOG & CAT FOOD, PRODUCE FOR COWS, HORSES, SHEEP, ALPACAS & POULTRY. SMALL SUPPLIES OF HORSE ACCESSORIES & MEDICINAL SUPPLIES

**FIREWOOD & KINDLING NOW AVAILABLE**

**24hr DIY DOGWASH**

**WE ARE NOW STOCKING NATURAL ANIMAL NUTRITIONISTS PRODUCTS!**  
Ask our friendly staff for more information about their wormers and anti inflammatories.

WE SELL RABBITS, BIRDS, GUINEA PIGS, MICE, RATS & CRAZY CRABS

We Sell Mealworms, Crickets and Woodies

**BEGONIA PETS & PRODUCE**

**YES! WE DO DELIVER**  
OPEN 7 DAYS: MON-FRI 8am-5.30pm  
SAT 9am-5pm • SUN 9am-1pm  
5895 GREAT EASTERN HIGHWAY (cnr Coppin Rd), MUNDARING

**NOW OFFERING KEY CUTTING (MON-FRI)**

**A FAMILY OWNED & RUN BUSINESS**

Follow us on to see our specials

**9295 2001**

**ROHAN FOX**  
Automotives

**9295 0955**

10 Wandeara Crescent, Mundaring Trade Centre

- New car servicing
- Fuel injection service
- All mechanical repairs
- Brakes & clutch
- Lube servicing



**REA**  
Mundaring

MRB7063

[www.rohanfoxautomotives.com.au](http://www.rohanfoxautomotives.com.au)

**PEGASUS PROFESSIONAL ACCOUNTING**

**Are you looking for a LOCAL professional, friendly accounting team?**

Then get in touch with **Pegasus Professional Accounting** for all your accounting and taxation needs.

**Phone 9295 6335**

Appointments and Drop Off service available

U15/3 (Nichol House) Nichol Street, Mundaring  
PO Box 658 Mundaring WA 6073  
Email: [reception@pegasusaccounting.com.au](mailto:reception@pegasusaccounting.com.au)

[www.pegasusaccounting.com.au](http://www.pegasusaccounting.com.au)





**Here to help!**  
**DONNA FARAGHER** JP MLC  
 MEMBER FOR EAST METROPOLITAN REGION  
 Shadow Minister for Community Services;  
 Early Childhood Education; Seniors & Ageing; Youth  
 Ground Floor, 108 Swan Street Guildford 6055  
 9379 0840 | faragher.eastmetro@mp.wa.gov.au  
 Authorised by D.Faragher, Ground Floor, 108 Swan Street Guildford WA 6055

**Realmark**

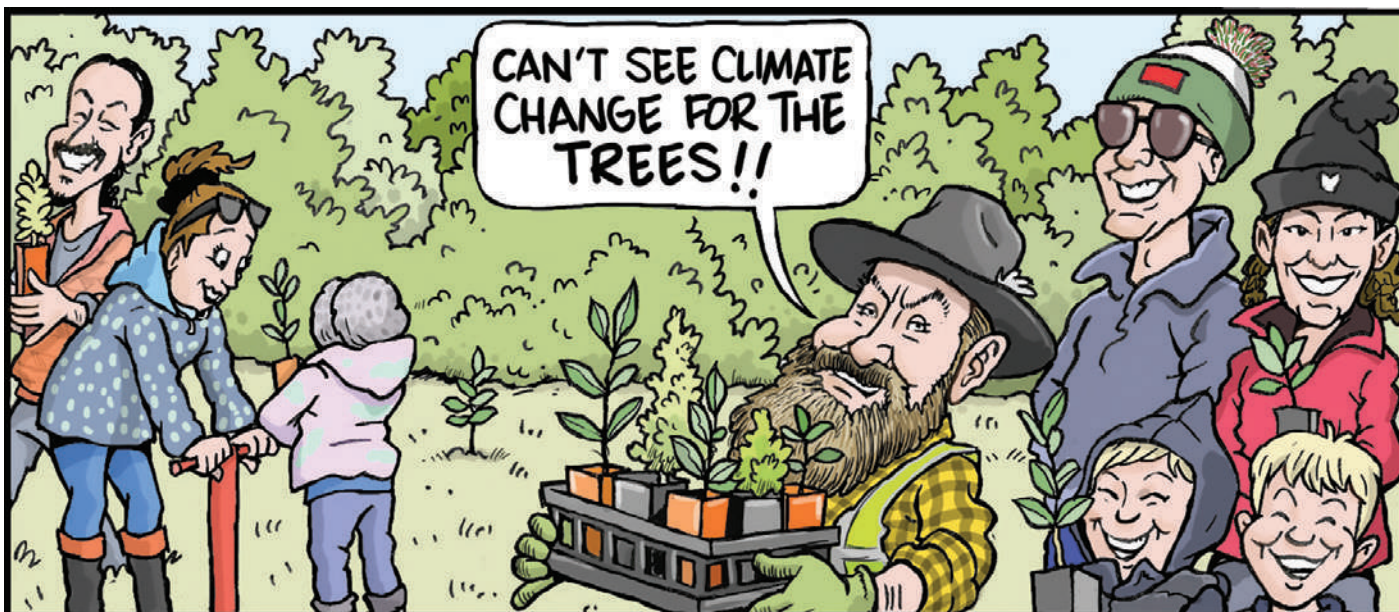
I'll ensure you're not undersold in the Swan Valley.

Do you want a fast sale, or a smart sale?

Don't settle for less; we employ a results driven approach to unveil your home's unique charm, ensuring you're sold, not undersold in the Swan Valley.




**OP SHOP IN MIDVALE**  
**Volunteers needed please enquire in the shop**  
 PEK CARE INTERNATIONAL OP SHOP  
 6181 4276 Empowering people with disabilities  
 We Accept Donations  
 "One person's trash is another's treasure"  
 PH: 6181 4276  
 Unit 9, 14-22 Farrall Rd MIDVALE



**COMMUNITY VOLUNTEERS IN CAVERSHAM PLANTED THOUSANDS OF TREES LAST WEEKEND IN THE EFFORT TO FIGHT THE IMPACT OF DAMAGE TO WILDLIFE HABITATS AND CLIMATE CHANGE.**

**ECHO YOUR THOUGHTS** Have your say: editorial@echo-news.com

**Recycling pathway plastics**

Dear Echo News,  
 I wish to express my deep concern regarding the plastic waste that we are forced to place in the present green or red topped bins.

When the major supermarket chains offered the soft plastics recycling facilities, I and many of the people I relate to were very happy to support this option and see the waste going through a recycle program.

The unfortunate demise of this was extremely distressing. What was obvious though was that there was an industry and a market ready to take this challenge on board for soft plastics.

There needs to be pressure brought to bear through local, state and federal governments to set up programs that will address this problem.

There needs to be incentives to encourage both research in the science underpinning plastic recycling and then to industries to apply appropriate technology to take on recycling.

Finally, the wider problem of consumers identifying and recycling all plastics remains.

Legislation needs to be passed requiring all plastic products to be given a visible code marking to enable consumers to do the initial sorting.

In parallel with this, legislation must be put in place requiring all plastic products to have a compulsory recycling pathway.

Self-regulation for industry will not work. Legislation with penalties for non-compliance must be introduced.

**Thanks from Cancer Council**

Dear Echo News,  
 Cancer Council WA extends a huge thank you to the many thousands of people across WA who hosted or attended an Australia's Biggest Morning Tea event between February and June 2024.

It's my pleasure to let you know our generous hosts raised over \$1.5 million.

As WA's leading cancer charity, we work across every aspect of every cancer, so the money raised helps fund our world-class research program, prevention and education, as well as support services for people and their families affected by cancer.

From everyone at Cancer Council WA, thank you Western Australia once again for your incredible support.  
**Ashley Reid**  
 Cancer Council WA

**Aged care concerns**

Dear Echo News,  
 It may not be 'popular' to comment adversely on aged care, but I don't think all carers or care administrators are 'angels' and I believe the standard of care in many aged care 'facilities' is often far from acceptable.

And while few will

**Thought for the day**  
 "A problem is a chance for you to do your best"  
 — Duke Ellington

say so publicly, I suggest some doctors, nurses, admin staff and even carers are a mix of patronising, rude and even uncaring and sometimes deliberately cover up their mistakes.

I'd go so far as to say that some occasions when patients are hurt are routinely ignored and/or downplayed to avoid criticism.

We all know that aged care workers are underpaid, making it harder to recruit good staff with real qualifications.

Aged care has become the gateway employment place for new migrants (especially female) who want to get a job — any job — and who accept sub-par pay and just do what they have to do to get along.

What's rarely admitted is that language and communication is too often an issue, given that English is a second or third language for those working in aged care.

That's not a criticism — most Australians only have one language — but it can mean that accents are very hard for older Australians to understand, given often totally different pronunciations of words.

Care of and for the aged must be raised as a priority, or we have to follow through on voluntary assisted dying, for those of us who don't wish to spend our last few years living in fear, pain or mind-numbing boredom.

**P Carman**  
**Hovea**

**No need for roundabout**

Dear Echo News,  
 Regarding the letter *Council dithers on intersection* (Echo News, July 5) by C Coulthard of Gooseberry Hill.

Railway Road and Elizabeth Street top end needs a roundabout like a hole in the head.

It's best to close off that top section of Elizabeth Street below Railway Road junction and maybe a turn left at the Gooseberry Hill sign at Headingly Road too, for some Elizabeth Road traffic heading up the hill.

It would also be a good idea to indent the bus stops adjacent the ambulance buildings for smooth traffic flow to Railway Road and clear signage for the Hospital Road commuters off Railway Road.

Most bus stops on main roads in the hills need indenting for clear traffic flow.

In particular, Canning Road, Lesmurdie Road, and Railway Road.

That would be money well spent.

More thought is also needed regarding bus shelter designs over time and their siting too, along with cross-overs and lighting in winter time.

**R Wood**  
**Lesmurdie**

*The Echo reserves the right to edit letters for length, legal reasons or clarity. The opinions expressed do not necessarily reflect those of the Echo. All letters must contain the author's full name, address and phone number for verification purposes.*

ADVERTISING FEATURE  
**Healthy Living**  
 FEATURE P12

**SPORT** 17



**REAL ESTATE** 19



**ECHO News**  
 ADDRESS:  
 Unit 4/9 The Avenue  
 Midland WA 6056  
 Phone: **9374 6666**  
 GENERAL MANAGER / EDITOR  
 Peter W Lewis 9374 6605  
 peter.lewis@echo-news.com  
 DISPLAY ADVERTISING  
 sales@echo-news.com  
 Belinda Lyne 9374 6607  
 Karon McCracken 9374 6610  
 CLASSIFIEDS, TRADES & DIGITAL ADVERTISING  
 reed.lewis@echo-news.com  
 Reed Lewis 9374 6600  
 EDITORIAL  
 editorial@echo-news.com  
 Anita McInnes 9374 6603  
 Guanhao Cheng 9374 6602  
 Jacki Elezovich 9374 6601  
 PRODUCTION  
 production@echo-news.com  
 Jeanene Allen 9374 6613  
 Liz Rowlands 9374 6613  
 Thomas Brady 9374 6613  
 ACCOUNTS  
 accounts@echo-news.com  
 Caprice Harries 9374 6604  
 OFFICE HOURS:  
 Monday-Thursday:  
 9.00am – 5pm  
 Closed Friday  
 Closed: Weekends & Public Holidays

**ECHO NEWS** Discover our digital edition online  
 Local Business Supporting Local People  
**www.echonepaper.com.au**





Some big projects associated with Ellenbrook are included in the City of Swan corporate business plan but it seems too Midland centric for some councillors. Picture: Anita McInnes

## Midland CBD focus questioned

ANITA McINNES

**SOME big projects associated with the Ellenbrook area are included in the City of Swan's corporate business plan but it seems it might be too Midland strategic centre centric for some councillors.**

The major projects and their costs are included in the city's corporate business plan 2024/25 to 2027/28 adopted on June 26 with eight councillors voting for the plan and five voting against it.

At the special council meeting to approve the city's budget Pearce ward Cr Patty Jones moved a motion – seconded by Whiteman ward Cr Haeden Miles to adopt the corporate business plan.

Altone ward Cr Jennifer Catalano was one of the five who voted against adopting the corporate business plan saying it was not what the ratepayers and residents and

others were telling her they wanted.

"I think the most glaring thing and I'm even more convinced day-by-day that the Midland strategic centre centric approach and I know it's all run by the strategic plan," Cr Catalano said.

"But we've got a big mistake here with this constant focus on Midland as a strategic centre.

"It clearly isn't going to be that in the future and no amount of money that you throw at is going to make it – it's all going to be happening in Ellenbrook and it's time all of our corporate documents reflect that."

At the meeting Cr Catalano did not highlight any projects she thought were Midland strategic centre centric.

The major projects listed are the Ellenbrook Community Hub \$8 million, Swan Active Ellenbrook \$105m, Swan Active

Midland – family change extension \$2m, Gngara Road duplication \$11m, Henley Brook Avenue (Gngara Road to Park Street) \$18.3m, Food organics and garden organics (FOGO) \$6.7m, Brabham district community centre \$6.1m, Ballajura intergenerational playspace \$6.4m and the Murray Road neighbourhood park and community building \$10.6m.

As well as Cr Jones and Cr Miles Pearce ward councillors Evia Aringo, Aaron Bowman, and Cate McCullough, Swan Valley Gidgegannup councillors Rod Henderson and Charlie Zannino and Mayor Tanya Richardson voted for the corporate plan.

Along with Cr Catalano, Altone ward Cr Amanda Dorn, Midland Guildford councillors Sarah Howlett and deputy mayor Ian Johnson and Whiteman ward Cr Dave Knight voted against it.

## Mundaring strengthen their ties in Canberra

**LAST week marked a significant moment for the Shire of Mundaring to champion the needs and advocate on behalf of its community.**

Shire President Paige McNeil and deputy president Trish Cook attended the 2024 National General Assembly in Canberra to discuss community challenges and opportunities.

Ms McNeil and Ms Cook are actively engaging with key federal ministers, advocating for investment in infrastructure projects and enhanced telecommunications connectivity.

They emphasised the importance of community needs being front and centre on the national agenda as the federal election approaches. Ms McNeil expressed her appreciation for the support and contribution across all levels of government.

"When federal, state and local governments work together we are able to deliver the very best outcomes for our community and I'm confident that our advocacy shone a light on the opportunities and challenges we face in the Shire of Mundaring that require support from the federal government," she said.

During a meeting with Infrastructure Minister Catherine King, the council members highlighted the unique opportunity to create a contemporary heart in the Mundaring town centre.

The multi-story, multi-purpose cultural hub is envisioned to showcase local artists, celebrate the region's rich history, and attract tourism.

Additionally, they stressed the urgent need for funding to upgrade the outdated and aging sporting clubrooms to foster inclusivity and accessibility, supporting the growing participation in sports across the shire.

In discussions with both the communications minister and shadow minister, Ms McNeil and Ms Cook sought support to eliminate blackspots and explore off-grid power solutions. These measures aim to enhance safety and emergency preparedness, particularly during critical events.

Looking ahead, further meetings with state ministers will be secured to ensure council's advocacy priorities are well understood before the state election in March 2025.



Stratton and Swan View residents say the Movida noise wall has increased freight train noise. Picture: Anita McInnes

## Noise wall decision due soon

ANITA McINNES

**SWAN councillors are set to reject options that Swan View and Stratton residents have hoped will reduce noise from freight trains if they follow an officer's recommendation.**

In *Freight train noise wall failure* (Echo News, February 17, 2023) Swan View and Stratton residents said the noise from freight trains, which never used to bother them, had become unbearable since the construction of a noise wall in the Movida estate.

The City of Swan July 10 agenda includes a recommendation that the council resolve to 1) note the findings of the investigation into the suggested noise mitigation treatments to the noise wall and 2) advise the residents that options to install acoustic cladding, sand backfill and reducing the speed of the trains were not feasible.

The officer's report also recommended progressing planning and design to include Blackadder Road in the city's street tree planting program, noting the requirement for railway network operator Arc Infrastructure's approval where the rail corridor may be affected.

The city said the total cost to clad the wall on the eastern side to address inconclusive reflective noise was estimated at about \$1.1 million and did not include ongoing maintenance and eventual replacement of the material.

"The acoustic consultant was unable to provide conclusive, objective evidence of a significant increase in noise from the wall," the officer's report

said.

Arc Infrastructure said it was not practical to reduce the speed limit on that section of track as it would impact the flow of freight on the entire network.

The acoustic consultant's report included the planting of vegetation near the noise wall as a potential mitigation strategy and the city sought advice from the Department of Water and Environmental Regulation (DWER).

"The advice indicates that vegetation would be of no benefit as a noise absorber but planting close to the wall may have some benefit in diffusing the reflected sound which could perhaps benefit the receivers.

"Both the advice from the acoustic consultant and the DWER noise branch indicates that for the vegetation to have any effect it would need to be planted close to the wall rather than along Blackadder Road.

Last year Trevor Treloar said he had lived on Blackadder right across from the railway line since 1996.

"We couldn't hear the trains coming from the east until they got to us and now we can hear them as they go across the crossing," he said.

"The big concern for us is when the next subdivision gets done they'll also have a wall and there is absolutely nothing between the railway line and those houses down that end of Blackadder Road because it's all level and it's just going to get so much louder.

"We used to sleep with the windows open in summer time to get the easterly, we don't now."



**Clinic's for women interested in learning Golf.**

**Six week program starting Wednesday 17<sup>th</sup> July until 21<sup>st</sup> August**

**9.30AM TO 10.30AM**

**WEEK ONE – FULL SWING**  
Wednesday 17<sup>th</sup> July 2024

**WEEK TWO – FULL SWING**  
Wednesday 24<sup>th</sup> July 2024

**WEEK THREE – CHIPPING**  
Wednesday 31<sup>st</sup> July 2024

**WEEK FOUR – FULL SWING**  
Wednesday 7<sup>th</sup> August 2024

**WEEK FIVE – PUTTING**  
Wednesday 14<sup>th</sup> August 2024

**WEEK SIX – FULL SWING**  
Wednesday 21<sup>st</sup> August 2024

**Cost \$25 per session or total \$150.**

**Morning tea will be served after each clinic.**



**Club Professional Rob Nuttall will oversee all clinics.**

**Bookings are essential. Call Pro Shop on 9453 9194**

**90 HARTFIELD ROAD, FORRESTFIELD WA 6058**



# Brabham and Bushmead receive Cedar Woods community grants

RECIPIENTS have been announced for the Cedar Woods 2024 community grants program for the Bushmead estate and Ariella private estate in Brabham.

Cedar Woods state manager Ben Rosser said it was wonderful to see the community groups continue to develop and Cedar Woods was proud to support them with their community initiatives.

“Fostering a real sense of community spirit is important to us and we hope to see these groups continue to add value to the community even after we leave.”

Brabham Racers Cricket Club’s Binda President said they were delighted to have Ariella private estate come on board as a major supporter for the recent cricket season.

“Investment in community sport clubs can be hard to come by so we are very grateful for the generous contribution and thank Cedar Woods for their support.”

Bushmead Conservation Cobbers’ Fiona Audcent-Ross said the community grant was welcomed by the community group which is dedicated to preserving the beautiful natural areas of Bushmead.

“The beauty and tranquillity of the surrounding bushland was a major factor in why we chose to live in Bushmead and therefore we are dedicated to caring for it, ensuring it can be enjoyed by us all, now and into the future.”

Recipients of the 2024 community grants include: Ariella private estate Brabham Racers Cricket Club (\$5000), Brabham Multicultural Club major sponsor (\$5000), Bushmead Conservation Cobbers contribution to the Diwali celebrations (\$4000) and Friends of Archerfield Park for preservation, maintenance and celebration of the natural surroundings of Bushmead (\$500), Bushmead Social Group for movie nights and food truck evenings (\$3400).

The program was established to support the communities that grow with Cedar Woods developments, benefitting both existing and new residents and fostering vibrant and sustainable neighbourhoods.



Fiona Audcent-Ross from Bushmead Conservation Cobbers and Javiera Islamzadeh from Bushmead Social Group.



Brabham Racers Cricket Club members.

## SKIDS SWIMWEAR

CHLORINE RESISTANT • UPF 50+  
ALL the Family • ALL Year Round

**FOR THE ADULTS**

- Swimwear for ladies & men right through to 7XL
- Famous Lycra brands
- Hats, towels and bags etc
- Ladies' leisurewear

SUN PROTECTION FOR ALL THE FAMILY

**OLYMPIC REPLICA SWIMWEAR, GOGGLES & GOWNS from SPEEDO NOW AVAILABLE! (Limited Stock)**

**KIDS STUFF**

- Rashies & bathers (inc plain black, navy)
- Goggles and accessories
- Sunnies and hats

**NEW FUNKYS ARE HERE!! Ask for FREE gift**

OLYMPIC REPLICAS

GOWNS FROM SPEEDO, MOOMOO KIDS, BACK BEACH & RAPPKO

BAMBOO PANTS & TOPS

NEW SUMMER & WINTER LEISURE WEAR

ALL THE FAMILY

PERIOD 1PCE + BRIEFS

ONE PIECES & SEPARATES

MADE IN PERTH

**161 HIGH ROAD, WILLETTON 9354 4124**  
MON- FRI 10-4      SAT 9-1

Australian Music Legend

# BRIAN CADD

**KALAMUNDA PERFORMING ARTS CENTRE**  
48 Canning Rd, Kalamunda - Bar open 7pm Show 7.30pm

**FRIDAY 19TH JULY**

TICKET BOX OFFICE PH: 08 9257 2558  
Ticket link: <https://bit.ly/KPACBrianCadd>

Scitech science communicator Beth Maskall presenting to Aveley North PS students.

## Scitech comes to Aveley North Primary

A SCITECH community event at Aveley North Primary School saw students and their families using their problem-solving skills to solve a maths mystery.

Scitech’s mystery of the mathematical menace is an after-school event that allows parents and carers to see the skills their children are learning in mathematics, applied in a fun and engaging way.

Maths problems are presented through interactive stations which families have to work together to solve, each giving them a new clue to uncover the identity of the suspect.

“The event is such a valuable way for students to show their parents and carers what they’ve been learning, and most of the time, it’s the kids showing the adults how to solve the problems,” Scitech learning and engagement officer Stephanie Massara said.

“We find that the adults get just as much into the activities as the kids, sometimes even more so as we’ve seen adults not wanting to leave until they have solved the problem.

“Having adults be involved with their children’s learning is so important and this event demonstrates that by simply asking their children questions, they are helping them learn.”

Mystery of the mathematical menace is delivered at primary schools like Aveley North Primary School that are participating in Lighthouse Maths,

Scitech’s year-long professional learning program delivered in partnership with Chevron Australia. The program builds teachers’ skills and confidence by using a problem-solving approach to teaching maths.

This approach gets students working collaboratively on problems and using their shared knowledge and understanding to come up with a solution, with teachers using targeted questioning to prompt further learning.

At the end of the lesson students share their working with the class, showing how many different approaches and solutions there are to the same problem.

“An important part of the event is that families can’t just give us the answer, they need to use their provided booklet to show us their working out or evidence for how they reached their conclusion of who the suspect is,” Ms Massara said.

“Being able to show how you worked something out not only develops problem-solving skills, it builds other key skills such as communication and critical thinking which are applicable across the curriculum as well as in students’ daily life.”

Scitech’s Lighthouse Maths is in its fourth year and has seen some incredible results with students who participate in the classes achieving on average eight months of additional learning, beyond the expected growth of one year.





The Station Gallery runs a thriving artist in residence program from the restored and historic station master's residence, culminating in numerous exhibitions and workshops throughout the year.

## Beverley Station Arts gets three-year boost

GUANHAO CHENG

**BEVERLEY Station Arts will be receiving \$35,000 per annum for three years as part of a state government boost supporting regional art venues.**

The funding will help regional theatres, civic centres, public galleries and other arts venues to expand their annual programming to better engage the local community and create opportunities for cultural tourism.

Beverley Station Arts president Jenny Broun said their funding would enable the association to bring touring artworks to Beverley.

"This current funding will enable us to work with Art on the Move, the organisation dedicated to touring visual art exhibitions throughout the regions, enabling deeper community connections for art and culture," she said.

"We also intend to introduce more programs focused on community based mental health, incorporating a broad range of visual art workshops.

"Included in our upcoming program list will be youth based interactive multimedia workshops."

The decommissioned Beverley railway station was restored and converted into the Beverley Station Arts and of-

ficially opened in 2006.

Regional Development Minister Don Punch said cultivating a successful hub for art in regional areas was significant and created opportunities for all.

"The benefits of a thriving arts sector for regional communities are felt by our local artists, audiences and economies," he said.

"In a state as large and diverse as WA, we're proud to be supporting a vibrant cultural landscape which offers something for everyone, no matter where you live."

Ms Broun said their Platform Theatre was made possible through similar government funding and the hard work of community members and encouraged interested people to visit.

"One of the main strengths of the organisation is (our) ability to draw audiences from surrounding towns and further afield demonstrated by ticket sales of over 300 patrons attending the recent successful An Evening with Marina Prior," she said.

"Take a drive to our gorgeous town on August 17 to the local Beverley Agriculture Show where you'll find us at our meet and greet booth showcasing our upcoming program of events."

# Kalamunda's 5% rate hike

GUANHAO CHENG

**CITY of Kalamunda councillors voted for a 5 per cent general rate increase as part of the new budget at the most recent special council meeting.**

The budget was unanimously approved by councillors, but in the lead up to the decision they discussed raising the rates, climate change measures, and cost of living pressures.

At the meeting, councillor David Modolo moved the item related to the submissions ratepayers made for the differential rates in the coming year, including the 5 per cent general rate increase.

In the council minutes, it was noted the submissions made by ratepayers "expressed the view that the city should limit the increase in rates in light of the current cost of living crisis."

Cr Modolo recognised the city's heavy reliance on rates and said council should be wary of accepting too many "ribbon cutting" funds from major political parties.

Cr Modolo said "free money" seemed great on paper, but the realistic aftermath was the city being left with new buildings that would affect yearly costs for residents.

"Constantly maintaining our assets and trying to build new ones when it's so expensive to do anything, is exactly why we keep raising rates," he said.

"I implore the council to consider carefully what funding we accept in future."

Cr Modolo also said the recent spends on electric vehicles and tree planting were well intentioned but ill-advised from a big picture and role of local government standpoint.

"(Climate change is) a serious international issue, and needs government action," he said.

"But we in the City of Kalamunda simply cannot be so naïve or so self-important to think that we can solve the global issue of climate change from our three postcodes.

"In Kalamunda, we spent nearly \$220,000 on tree planting last financial year, and this year we're bragging about buying a couple of expensive electric vehicles.

"We are a local government: our wheelhouse is roads, rubbish, and a few key services to the community. It's not environmental change. **Cont. page 16.**

# COUNTRY BUILDERS

the *Better* building experience.

## Begin your next *chapter* with WA Country Builders

At WA Country Builders, we're here to build the foundations of your next life chapter. Whether you dream of spacious living in the serene countryside or a cosy retreat nestled in a new community, our expert team is dedicated to bringing your vision to life.

Trust WA Country Builders to create a home where every corner tells your story. Because when it's time to write your next chapter, we're here to make it unforgettable.

To learn more, please visit [wacountrybuilders.com.au](http://wacountrybuilders.com.au) or phone 6141 9125.



PROUD *Regional* BUILDER OF



RESIDENTIAL ATTITUDES



# Community plants native trees in fight against climate change

GUANHAO CHENG

**THOUSANDS** of native trees were planted in Caversham by community volunteers last Saturday in an effort to fight the impacts of climate change and reverse damages to wildlife habitats.

Trillion Trees' ecological restoration manager Julian Beasley said he was appreciative of the turnout on the day and hoped to see the same level of engagement at the Viveash planting later this month.

"We're so grateful to everyone who helped to make our community planting day a huge success," he said.

"Together with 90 willing volunteers, we planted over 6000 native trees, shrubs and groundcover plants in just a few hours.

"It was great to see people of all ages and abilities coming together to take real action, helping to restore this important riparian woodland as a viable habitat for wildlife and a living legacy for the local community in the future.

"We planted a biodiverse selection of locally endemic species which will grow to provide habitat for a range of native animals that still frequent the area, including quendas, possums, endangered black cockatoos and many others.

"If you missed out on this event, you can join us on Saturday, July 20 for our second community planting day in Viveash."

Over the weekend, tickets sold out for the Viveash event but Trillion Trees fundraising and communica-

tions coordinator Kate Herren said it was still worth joining the waitlist.

"We will hold a waitlist for that, as over the next couple of weeks some spaces might open up so we will take a few more names," she said.

"130 people booked in for the Caversham event but then 90 turned up, so it's definitely worth joining that list in case anyone drops out."

Established in 1979, Trillion Trees is the longest running volunteer-led environmental organisation in WA.

The organisation has planted 15 million trees since its inception and is working for a world where all people recognise the value of trees.

**The community planting day resulted in 6000 trees successfully planted.**



## Kids LOVE Drama




BOOST CONFIDENCE

LEARN LIFE SKILLS

INCREASE SELF ESTEEM

IMPROVE COMMUNICATION

INCREASE SELF ESTEEM

DEVELOP DRAMA SKILLS

Dianella • Guildford Homeschool • Kalamunda • Mundaring • Swan View

CALL OR TEXT FOR MORE INFORMATION

**9378 4332 | 0490 808 206**

merylena.sulak@helenogrady.net.au | www.helenogrady.net.au





**SLW Transport**  
is family  
owned  
& operated



**You need it  
moved just ask!**

Prime Movers  
Rigid Courier Utes  
Side Loaders  
Single Trailers – Triple Road Trains  
Oversize Haulage  
Mine & Construction Site Projects  
Wharf Pick-ups & Deliveries

**Phone: 0438 774 201**

**130a Milner Rd, HIGH WYCOMBE WA 6057**

# Red hatting expanding into Swan Valley and Bullsbrook

JACKI ELEZOVICH

**WOMEN'S** group the Red Hatters will be expanding their groups to Bullsbrook and the Swan Valley next month.

The Red Hatters are a women's organisation with groups around the world, whose aim is to encourage women, particularly those in their older years, to get involved in social activities and meet new people.

Chairperson Marion Buchanan said the new group would expand the Red Hatters circle for growing suburbs through the Swan Valley, Bullsbrook and Ellenbrook.

She said joining a group was a great way to make new friends and be involved in the community, and expanding locations to a new area made being a red hatter something that more women can do in their area.

Across WA, the Red Hatters have more than 90 groups of women who all meet, dressed in the organisation's distinctive red and purple colour scheme, to have fun and make new friends. Around Australia, there are about 350 groups.

Ms Buchanan said the dress code was about standing out in the crowd, and more than that it



Red Hatters enjoy a sunny day out and a train ride.

was about feeling like you belong to something, and having a strong visual of that was really fun and could also be powerful.

The organisation has been running since 1997, and has been in WA since 2003.

The groups operate mostly on their own terms, with some groups organising weekly activities, some meeting multiple days a week, and some only meeting monthly.

Ms Buchanan said the main aim of every group was connec-

tion. She believed being part of the group was about doing something fun and frivolous, no matter your age or what you're interested in, that there was something for everyone to be involved in.

She said another great thing about the group was giving women the confidence to go out and do things they wouldn't have done alone, and making lifelong friendships.

Visit red-hatters-wa.net

# Funding helps early childhood

JACKI ELEZOVICH

**THE** cities of Swan and Kalamunda are among councils who have received funding to expand early childhood programs for vulnerable families.

City of Swan Mayor Tanya Richardson said the city was committed to fostering an inclusive, connected community and creating a sense of belonging from its oldest to youngest members.

"Thanks to support from the state government, the city has received a grant of \$100,000 to expand our services for children and implement a children and families action plan to improve outcomes specified in the Australian early development census (AEDC)," she said.

The AEDC annually collects information about Australia's youngest citizens, assessing more than 305,000 children to uncover patterns in development and where and who in the community might need more help and guidance to setting their children on the right path.

Ms Richardson said the city would be rolling out several evidence-informed programs to vulnerable families in the community.

"Under the banner of Swan Strong, we're rolling out evidence-informed programs called It's all about play, Nature play in the park, Read play grow, Paint the Swan REaD, and Rockin' bops

to vulnerable families and children from diverse backgrounds," she said.

"Some of these programs, like Paint the Swan REaD, have been tested and deemed successful in previous years as they bridge the gap in services for children who aren't captured in early childhood programs and workshops."

Ms Richardson said the new funding will help support children and families who had previously flown under the radar.

"These programs will help us improve developmental outcomes, increase evidence-informed support and initiatives and improve our response to developmental vulnerabilities for young children in our community," she said.

Early childhood education minister Sabine Winton said the grants would support local governments to deliver programs to support families in the critical stages of their children's development.

"The initiatives will allow councils to deliver targeted interventions that address the unique needs of their communities, improving outcomes for children and families," she said.

The Zig Zag early childhood program, in the City of Kalamunda, is rolling out similar programs with new funding.

A spokesperson said additional funding and focus on struggling families would help put even more kids on a good pathway for development.



# Kalamunda mum nominated for community achievement

MIKE PEETERS

**KALAMUNDA mother Amy Scott has been nominated in this year's WA community achievement awards for her tireless efforts to promote road safety in WA.**

Ms Scott tragically lost her seven-year-old son Nate Stewart in a car crash near Geraldton in June 2020.

Nate was returning home to Perth after spending the WA Day long weekend in Geraldton with his father Cheyne and stepmother Stacey, who was behind the wheel at the time of the crash.

Ms Scott, who was not in the car at the time, has since spent much of her time trying to raise awareness of the importance of road safety.

"I want people to realise it can happen to them," Ms Scott said.

"It can happen to anyone, your child, your mother, your sister, your brother."

Bravely speaking out to share her powerful road safety message and the devastating impact Nate's death has had on her, Ms Scott said the anniversary of the crash on June 1 and Nate's birthday on July 30 were always the most difficult days.

"It would have been his twelfth birthday this

year and all I want is for others not to have to go through what I have been through," Ms Scott said.

She recently commenced working with the Paraplegic Benefit Fund to give talks in schools and colleges in an effort to help people realise the dangers on the roads and the recent increases in road deaths.

"Another area of concern with road crashes is the recent increase in motorcycle deaths on our roads, particularly involving older male riders," Ms Scott said.

"When driving people should always be aware of the 'fatal five': the five fatal factors that contribute to road trauma in Western Australia.

"These are distraction, fatigue, speeding, wrong or non-use of seatbelts, and drugs and alcohol."

Nominations close on July 24 and the awards presentation is on October 12.

For more information go to: <https://awardsaustralia.com/community-achievement-awards/wa/>

**Amy Scott with her son Nate Stewart, who died in a car crash in 2020.**



Senior Sergeant Mark Marriott says Midland Police are trying to deter crime through their daily deployments and increase in visible patrolling. Picture: Andrew Williams

# Theft still Midland's leading crime statistic: WA Police

GUANHAO CHENG

**STATISTICS from WA Police show stealing remains the most frequent offence year after year in Midland, and the state in general.**

Last year's figure of 1622 stealing offences in Midland was the same as 2019's figure, sharing the top spot of a 10-year high.

Midland Senior Sergeant Mark Marriott who became officer in charge near the end of last year, as reported in *Big shoes to fill for new Midland police chief* (Echo News, December 1), said recent operations were a targeted response to this. "A recent example of this is Operation Makassar which is a dedicated operation targeting both retail theft and anti-social behaviour within the Midland CBD," he said.

"Midland Police have a team committed to responding to calls for help from the community almost immediately specifically targeting these offences.

"Over the last 12 months, more than 893 charges have been preferred for stealing offences within the Midland sub district."

Assault statistics remained high being the second most common offence when family and non-family figures were combined.

Snr Sgt Marriott said in response to those high numbers Midland officers were working with other agencies to keep victims safe.

"The investigation into family violence continues to be a priority for the Western Australian police force," he said.

"Victim safety is considered in all instances and to assist with this we have partnered with other agencies to ensure the best possible outcomes for victims.

"Everyone deserves to live without fear of violence and the Western Australian police will be there in times of need."

There was a spike in offences committed in Midland in January which Snr Sgt Marriott said was in line with crime increases in shopping precincts at the start of school holidays.

"To address this issue head-on Midland Police have partnered with breath and drug operations and mounted section to provide high visibility policing to deter offending behaviour," he said.

"This specific operation called

Escot has had a positive impact so far with 41 persons charged with 55 offences over the July school holidays.

"Reported crime can often increase during these operations due to the increased availability of police in the area."

Snr Sgt Marriott said he wanted to remind residents to be vigilant and do what they could to prevent crime.

"Unfortunately, there will always be people in our community who look for opportunities to commit crime," he said.

"There are things the community can do to assist us in lowering crime. Most importantly, lock up and don't leave your valuables in sight.

"Contact police immediately to report incidents of crime. Particularly when offenders may still be onsite and committing offences.

"Personal safety should always be the first priority and members of the community should never put themselves in harm's way.

"Midland Police are committed to reducing crime and our officers take pride in servicing the community in which they work and live in."

**If we don't have what you need, we will point you in the right direction...**

- > 4x4 Specialists
- > Late Model Passenger Vehicles
- > Light Commercials

**TONY'S AUTO WRECKERS** EST 1975 DL3011

**FREE CALL 1800 634 442**

**Phone 9274 3338**

7-11 Stanhope Gardens, Midvale  
E: [sales@tonysauto.com.au](mailto:sales@tonysauto.com.au)  
[www.tonysauto.com.au](http://www.tonysauto.com.au)

**ECHO NEWS**

**Always in front!**

Read the latest news online at [www.echonepaper.com.au](http://www.echonepaper.com.au)

Your FREE Local Weekly newspaper is also available from local outlets or subscribe NOW to get Echo News emailed direct to your inbox.

Subscribe Now

**9374 6666**  
[sales@echo-news.com](mailto:sales@echo-news.com)  
[editorial@echo-news.com](mailto:editorial@echo-news.com)  
Suite 4, 9 The Avenue, Midland



# Warning over charcoal burners

**FOLLOWING a number of harmful cases of carbon monoxide poisoning, Western Australians are being reminded about the dangers of using charcoal burners to keep warm inside their home.**

With temperatures dropping, the Department of Fire and Emergency Services (DFES) and North Metropolitan Health Service have issued a warning about the potentially deadly risk of exposure to carbon monoxide from charcoal burners.

Sir Charles Gairdner Hospital clinical toxicologist Dr Jason Armstrong said because carbon monoxide was tasteless, odourless and colourless, people often did not know they were being poisoned.

“Carbon monoxide poisoning can cause loss of consciousness or death,” he said.

“For those that do recover, carbon monoxide poisoning can cause permanent health issues.”

DFES operations deputy commissioner Craig Waters said burning coal for warmth was common practice in some countries and public awareness was key to preventing further harm.

“Outdoor heaters or charcoal burners should never be brought inside to keep you or your family warm as there can be deadly consequences.

“The poisonous carbon monoxide fumes from these products that slowly build up inside enclosed spaces are incredibly dangerous.

“Even gas heaters shouldn’t be left to run continuously overnight because they can be a source of carbon monoxide when they haven’t been serviced in a long time.

“You can’t smell carbon monoxide as it slowly poisons your body, so the best way to protect yourself is to only use these devices in well-ventilated areas,” Mr Waters said.

Dr Armstrong said if you think you may be experiencing carbon monoxide poisoning, leave the area immediately and get fresh air.

“If you are experiencing symptoms, contact 000 or call the WA Poisons Information Centre on 13 11 26,” he said.

Common symptoms of carbon monoxide poisoning include headache, dizziness, shortness of breath, weakness, nausea, vomiting, chest pain and confusion.

Incidents involving house fires and heaters typically spike in the winter months when people spend more time indoors and try to keep warm overnight.

“DFES recommends installing a carbon monoxide alarm in parts of the home like the lounge-room to receive an early warning that could save your life,” Deputy Commissioner Waters said.

“We also ask the community to be vigilant around other fire hazards, such as candles, cigarettes and unattended cooking.



Dr Jason Armstrong with Jeff David and John Manocchio from DFES.

# New Midland station project construction update

**WITH the Cale Street level crossing expected to open on Friday, July 12 the final touches are being delivered to ensure everything is set for opening day.**

Works on the level crossing commenced in August 2023 and has included utilities relocation, removing redundant rail lines and road construction.

The intersection of Railway Parade and Cale Street re-opened on May 3, 2024 after being closed for four months.

Permanent signage has recently been installed and line marking works have started. Next up are the installation of the signals,

boom gates and the pedestrian crossing.

### Multi-storey car park

The multi-storey car park is now visible across Midland, and the concrete slabs for level one, two and three have been completed.

Concrete pouring on level four is ongoing, with a scheduled completion in August.

When the top (level four) slab is in place, work will continue with services fit out, including electrical, security, lighting and fire protection.

Later this year work on the facade will commence and the multi-storey car park is expected to open in the coming months.

### New Midland station

Meanwhile, concrete pours are also being carried out at the new station building on the corner of Railway Parade and Helena Street following foundation works which started early this year.

Simultaneous work at the train drivers’ sign on building on the corner of Yelverton Drive and Helena Street south of the rail line will continue throughout 2024.

This work on both sides of the rail line will pave the way for construction of the 24/7 pedestrian walkway which will allow access to the north and south.



SWAN CHAMBER OF COMMERCE & CITY OF SWAN

# BUSINESS AWARDS 2024 WINNERS

<p><b>INNOVATION AND CREATIVITY</b> HANSEN PTY LTD <b>WINNER:</b> <b>ECHO NEWSPAPERS</b></p>	<p><b>MANUFACTURING</b> MALAGA PRINT &amp; SIGNS <b>WINNER:</b> <b>HAULMORE TRAILER SALES</b></p>	<p><b>COMMUNITY SPIRIT AWARD</b> PHAM GROUP <b>WINNER:</b> <b>BENDIGO COMMUNITY BANK MUNDARING</b></p>	<p><b>TRAINEE/APPRENTICE OF THE YEAR</b> BAILEY BREWING CO <b>WINNER:</b> <b>AGUSTIN FACCHINI-ENVISAGE STEEL CREATIONS</b></p>
<p><b>TOURISM EXCELLENCE</b> MUNDARING CHAMBER OF COMMERCE <b>WINNER:</b> <b>GUILDFORD HERITAGE FESTIVAL COUNCIL INC.</b></p>	<p><b>RETAIL EXPERIENCE</b> NIKOLA ESTATE <b>WINNER:</b> <b>COPPER AND OAK LIQUOR MERCHANTS</b></p>	<p><b>EXCELLENCE IN ACCESS AND INCLUSION</b> CITY OF SWAN <b>WINNERS:</b> <b>THE HOUSE OF HONEY &amp; THE STICKY SPOON CAFE</b> <b>KARTING 2 LIVE LTD</b></p>	<p><b>YOUNG PROFESSIONAL</b> MIDLAND GATE <b>WINNER:</b> <b>ZAC JOHNSON-JOHNSON PROPERTY CORP.</b></p>
<p><b>HOSPITALITY</b> SANDALFORD <b>WINNER:</b> <b>QUEST MIDLAND</b></p>	<p><b>NEW BUSINESS</b> CARCO.COM <b>WINNER:</b> <b>COMMERCIAL BAR AND KITCHEN</b></p>	<p><b>INCLUSIVE EMPLOYER</b> CITY OF SWAN <b>WINNER:</b> <b>MALAGA PRINT &amp; SIGNS</b></p>	<p><b>EMPLOYEE OF THE YEAR</b> CROOKED SPIRE COFFEE AND ART HOUSE <b>WINNER:</b> <b>GRAHAM COX-SWAN CITY YOUTH SERVICE</b></p>
<p><b>EXCELLENCE IN MARKETING</b> MIRVAC <b>WINNER:</b> <b>COPPER AND OAK LIQUOR MERCHANTS</b></p>	<p><b>FASHION &amp; DESIGN</b> VenueTechAU <b>WINNER:</b> <b>ECO FASHION WEEK AUSTRALIA</b></p>	<p><b>ENVIRONMENT AND SUSTAINABILITY</b> SHIRE OF MUNDARING <b>WINNER:</b> <b>GREEN EMBASSY</b></p>	<p><b>PEOPLES CHOICE</b> SOLOMON HOLLETT LAWYERS <b>WINNER:</b> <b>ELLENBROOK COMMUNITY COLLECTIVE INC.</b></p>
<p><b>SERVICE EXCELLENCE</b> MIDLAND TOYOTA <b>WINNER:</b> <b>TENJUNE HAIR STUDIO</b></p>	<p><b>HEALTH AND WELLBEING SERVICES</b> ST JOHN OF GOD MIDLAND PUBLIC AND PRIVATE HOSPITALS <b>WINNER:</b> <b>ILLAWARRA MEDICAL CENTRE</b></p>	<p><b>TRADE SERVICES</b> STEFANELLI GROUP <b>WINNER:</b> <b>TENJUNE HAIR STUDIO</b></p>	<p><b>BUSINESS PERSON OF THE YEAR</b> SLW TRANSPORT <b>WINNER:</b> <b>ANDREA SOUTHAM-MUNDARING FINANCIAL SERVICES</b></p>
<p><b>FOOD AND BEVERAGE PRODUCTION</b> ECHO NEWSPAPERS <b>WINNER:</b> <b>AMBERCHES SPIRITS DISTILLERY</b></p>	<p><b>NOT FOR PROFIT INITIATIVES</b> BENDIGO COMMUNITY BANK MUNDARING <b>WINNERS:</b> <b>INDIGO JUNCTION</b> <b>ROAR INC</b></p>	<p><b>TRANSPORT &amp; LOGISTICS</b> WATER SUPPLY LOGISTICS WA <b>WINNER:</b> <b>ZERO RENTALS</b></p>	<p><b>BUSINESS OF THE YEAR</b> SWAN CHAMBER OF COMMERCE <b>WINNER:</b> <b>BENDIGO COMMUNITY BANK MUNDARING</b></p>





The Lions Eye Institute building on Yelverton Drive.

## Lions Eye Institute receives funding boost for eyecare

MIKE PEETERS

**THE Lions Eye Institute has received \$276,000 to deliver the state's first metropolitan collaborative eyecare model, providing timely specialist eyecare to people in Midland.**

The funding will be used towards a specialist glaucoma care clinic in Midland and is one of 10 successful projects to be funded through the state government's new innovation challenge sustainable health priorities program.

Based on the Lions Eye Institute outback vision model it will be staffed by optometry school staff and students from the University of Western Australia (UWA).

It will be supervised by glaucoma consultants to provide efficient, cost-effective triage and care for glaucoma patients.

The east metropolitan health service also received \$449,931 for its smart scheduling project using digital prediction to streamline access to care; and a further \$260,092 for 'habithack', to develop recovery tools in everyday life.

Medical Research Minister Stephen Dawson said a to-

tal of \$4 million was being allocated towards tackling WA's sustainable health priorities through the successful future health research innovation (FHRI) fund, with up to \$450,000 in funding per project.

"The new innovation challenge program will enable WA health service providers, universities, not-for-profit organisations and industry to bring innovative health initiatives to life and ensure that local communities receive affordable and personal care closer to home," Mr Dawson said.

He congratulated the successful recipients and said he looked forward to following their innovation journey and seeing the projects translated into real benefits for the wider community.

The state government established the productive FHRI fund in 2020, which is backed by the state's almost \$1.8 billion sovereign wealth fund.

This has resulted in nearly \$250m being available over the next four years to support health and medical research and innovation throughout the state.

For more information go to: <https://fhrifund.health.wa.gov.au/>

## Nats want changes to new gun laws

**LAW-abiding firearms owners have raised serious concerns about Labor's new laws, including a lack of due process which saw debate gagged and the laws rushed through Parliament in recent weeks, according to Nationals WA leader Shane Love.**

"The Nationals WA are the only party which opposed Labor's new firearms laws," Mr Love said.

"Labor's new laws will force many to surrender their firearms and severely impact regional firearms dealers. These laws are unnecessary and heavy-handed.

"That's why The Nationals WA have committed to rewrite aspects of the Firearms Act 2024 if we are returned to government at the state election."

Mr Love also criticised the ongoing treatment of the firearms community by the Police Minister Paul Papalia throughout the debate and the recent distribution of thousands of misleading text messages by WA Police.

"These texts, which were inaccurate, contributed to confusion and concern for many law-abiding firearm owners, by falsely stating the new firearms act had come into law," he said.

The existing Firearms Act 1973 will remain in effect until the Firearms Act 2024 is proclaimed, which is expected to occur in March next year.

"WA Police should be helping firearms owners navigate the new process, not sending out misleading communications.

"And it's disappointing the Police Minister has refused to apologise for this costly error, which has set taxpayers back around \$26,000 and was totally avoidable."

Legislative Council candidate Rob Horstman said as a regional resident and a licensed firearm owner, he understood the importance of firearms for pest control on the family farm, and also that many people also enjoy shooting for enjoyment – either as part of a gun club or recreationally.

"Shooting is one of the most inclusive sports out there and can be enjoyed no matter your age or ability," he said.

"We're just days away from the Paris Olympics, where WA's own Laura Coles will compete on an international level, but the Labor Government is discouraging other West Australians from taking up this past-time."

## eye on crime

### Sawyers Valley dam death investigation

**ABOUT 10pm on Wednesday, June 26, a blue Mitsubishi Lancer hatchback left the roadway near the intersection of Forrest Street and Eason Road in Sawyers Valley, and crashed into a dam on a private property.**

WA Police said police, St John WA and DFES attended the scene a short time later.

Following inquiries, Water Police utilised an underwater drone to assess the situation; howev-

er, the operation was suspended due to the conditions.

Police divers attended the scene early on Thursday, June 27, and at about 11am, the vehicle was removed from the dam.

Police discovered the body of a 34-year-old male inside the vehicle.

Officers from the major crash investigation section are investigating the incident.

## Scammers targeting elderly victims

**DETECTIVES have charged a 25-year-old man with fraud related offences after he attempted to scam a 93-year-old woman out of \$58,000.**

Between Wednesday, June 26 and Thursday, June 27, the victim received several phone calls from a man who claimed to be investigating scammers that were attempting to hack her accounts.

It will be alleged; the man – who was later identified as the accused – demanded she withdraw \$58,000 to enable the investigation of the scammers to be finalised.

He advised the victim that a man would come to her house on Friday to collect the money. The victim spoke to her neighbour about the phone calls, who then advised her to contact police.

About 9.40am on Friday, June 28, the accused attended the victim's address to collect the cash, and he was arrested a short time later.

The 25-year-old Victorian man was charged with two counts of intent to defraud by deceit.

He is next due to appear before the Perth Magistrates Court on July 18.

The investigation has identified various groups who target elderly and vulnerable people in the community and victims are being contacted by telephone from people posing to be fraud investigators.

These groups convince victims they are in danger of being hacked and pose as legitimate fraud specialists willing to assist.

## Caversham man Hay St charges

**PERTH detectives have charged a 24-year-old Caversham man in relation to an incident on Hay Street, East Perth, which occurred about 4.45am on Saturday, June 29.**

In the early hours of Saturday, five injured people attended hospital for medical treatment following a vicious brawl outside Barbes nightclub on Hay Street involving about 50 people.

Their injuries were not life-threatening. An investigation was commenced to establish the circumstances surrounding their injuries.

The investigation linked the injured men to an

incident that occurred earlier on Hay Street. On Sunday, June 30, police attended Royal Perth Hospital and arrested the 24-year-old man.

He has been charged with endanger life, health or safety of a person and appeared in Perth Magistrates Court on July 10, to reappear August 7.

The investigation is ongoing.

Anyone with information regarding this incident is asked to call Crime Stoppers or report the information online at [www.crimestopperswa.com.au](http://www.crimestopperswa.com.au)

Police want anyone with information regarding the above incidents to call Crime Stoppers on 1800 333 000 or you can make a report online at [www.crimestopperswa.com.au](http://www.crimestopperswa.com.au)





# KIMBO'S Fashions

MIDLAND & WILLETTON

GIFT VOUCHERS AVAILABLE



## WINTER SAVINGS

### on selected items

find the perfect Outfit!

Like us on Facebook 

**MIDLAND**  
9274 0429 | 1 Old Great Northern Hwy | OPEN 6 DAYS

**WILLETTON**  
9259 1698 | Unit 2 / 11 Augusta Street | OPEN 6 DAYS



# Shire of Mundaring Waste and Recycling Calendar 2024 - 2025

To check your bin days and area use the the address look up tool:



The **FOGO BIN** for compost is collected weekly

The **RECYCLING BIN** is collected fortnightly (no change to previous schedule)

The **GENERAL WASTE BIN** is collected fortnightly (opposite week to your recycling collection)

### What can go in your FOGO bin?

If it didn't grow, it's not FOGO. Only food scraps, garden waste and compostable liners can go in the lime-green lid FOGO bin.

### PUBLIC HOLIDAY COLLECTIONS

Bins are not collected on Christmas Day, New Year's Day and Good Friday. Refer to this table for alternative collection days.

#### IF YOUR NORMAL BIN DAY IS

Wed 25 December 2024

Thurs 26 December 2024

Fri 27 December 2024

Wed 1 January 2025

Thurs 2 January 2025

Fri 3 January 2025

Fri 18 April 2025

#### PUT YOUR BIN OUT ON

Thurs 26 December 2024

Fri 27 December 2024

Sat 28 December 2024

Thurs 2 January 2025

Fri 3 January 2025

Sat 4 January 2025

Sat 19 April 2025

### Putting your bins out for collection

Please note that starting from August 2024, your current dark green lidded general waste bin lid will be replaced with a red lid.



Place bins out by 6am



Maximum weight of each bin is 70kg



Do not park in front of bins



1m

Keep at least 1m clear from trees and not under tree canopy



0.5m

Keep at least 0.5m clear between bins



1m

Keep at least 1m clear of cars, mailboxes and fences etc.





## Area 1 bin days

JULY 2024							AUGUST 2024							SEPTEMBER 2024							OCTOBER 2024						
Su	Mo	Tu	We	Th	Fr	Sa	Su	Mo	Tu	We	Th	Fr	Sa	Su	Mo	Tu	We	Th	Fr	Sa	Su	Mo	Tu	We	Th	Fr	Sa
	1	2	3	4	5	6					1	2	3	1	2	3	4	5	6	7			1	2	3	4	5
7	8	9	10	11	12	13	4	5	6	7	8	9	10	8	9	10	11	12	13	14	6	7	8	9	10	11	12
14	15	16	17	18	19	20	11	12	13	14	15	16	17	15	16	17	18	19	20	21	13	14	15	16	17	18	19
21	22	23	24	25	26	27	18	19	20	21	22	23	24	22	23	24	25	26	27	28	20	21	22	23	24	25	26
28	29	30	31				25	26	27	28	29	30	31	29	30						27	28	29	30	31		

NOVEMBER 2024							DECEMBER 2024							JANUARY 2025							FEBRUARY 2025						
Su	Mo	Tu	We	Th	Fr	Sa	Su	Mo	Tu	We	Th	Fr	Sa	Su	Mo	Tu	We	Th	Fr	Sa	Su	Mo	Tu	We	Th	Fr	Sa
					1	2	1	2	3	4	5	6	7			1	2	3	4							1	
3	4	5	6	7	8	9	8	9	10	11	12	13	14	5	6	7	8	9	10	11	2	3	4	5	6	7	8
10	11	12	13	14	15	16	15	16	17	18	19	20	21	12	13	14	15	16	17	18	9	10	11	12	13	14	15
17	18	19	20	21	22	23	22	23	24	25	26	27	28	19	20	21	22	23	24	25	16	17	18	19	20	21	22
24	25	26	27	28	29	30	29	30	31					26	27	28	29	30	31	23	24	25	26	27	28		

MARCH 2025							APRIL 2025							MAY 2025							JUNE 2025						
Su	Mo	Tu	We	Th	Fr	Sa	Su	Mo	Tu	We	Th	Fr	Sa	Su	Mo	Tu	We	Th	Fr	Sa	Su	Mo	Tu	We	Th	Fr	Sa
						1			1	2	3	4					1	2	3	1	2	3	4	5	6	7	
2	3	4	5	6	7	8	6	7	8	9	10	11	12	4	5	6	7	8	9	10	8	9	10	11	12	13	14
9	10	11	12	13	14	15	13	14	15	16	17	18	19	11	12	13	14	15	16	17	15	16	17	18	19	20	21
16	17	18	19	20	21	22	20	21	22	23	24	25	26	18	19	20	21	22	23	24	22	23	24	25	26	27	28
23	24	25	26	27	28	29	27	28	29	30				25	26	27	28	29	30	31	29	30					
30	31																										

## Area 2 bin days

JULY 2024							AUGUST 2024							SEPTEMBER 2024							OCTOBER 2024						
Su	Mo	Tu	We	Th	Fr	Sa	Su	Mo	Tu	We	Th	Fr	Sa	Su	Mo	Tu	We	Th	Fr	Sa	Su	Mo	Tu	We	Th	Fr	Sa
	1	2	3	4	5	6					1	2	3	1	2	3	4	5	6	7			1	2	3	4	5
7	8	9	10	11	12	13	4	5	6	7	8	9	10	8	9	10	11	12	13	14	6	7	8	9	10	11	12
14	15	16	17	18	19	20	11	12	13	14	15	16	17	15	16	17	18	19	20	21	13	14	15	16	17	18	19
21	22	23	24	25	26	27	18	19	20	21	22	23	24	22	23	24	25	26	27	28	20	21	22	23	24	25	26
28	29	30	31				25	26	27	28	29	30	31	29	30						27	28	29	30	31		

NOVEMBER 2024							DECEMBER 2024							JANUARY 2025							FEBRUARY 2025						
Su	Mo	Tu	We	Th	Fr	Sa	Su	Mo	Tu	We	Th	Fr	Sa	Su	Mo	Tu	We	Th	Fr	Sa	Su	Mo	Tu	We	Th	Fr	Sa
					1	2	1	2	3	4	5	6	7			1	2	3	4							1	
3	4	5	6	7	8	9	8	9	10	11	12	13	14	5	6	7	8	9	10	11	2	3	4	5	6	7	8
10	11	12	13	14	15	16	15	16	17	18	19	20	21	12	13	14	15	16	17	18	9	10	11	12	13	14	15
17	18	19	20	21	22	23	22	23	24	25	26	27	28	19	20	21	22	23	24	25	16	17	18	19	20	21	22
24	25	26	27	28	29	30	29	30	31					26	27	28	29	30	31	23	24	25	26	27	28		

MARCH 2025							APRIL 2025							MAY 2025							JUNE 2025						
Su	Mo	Tu	We	Th	Fr	Sa	Su	Mo	Tu	We	Th	Fr	Sa	Su	Mo	Tu	We	Th	Fr	Sa	Su	Mo	Tu	We	Th	Fr	Sa
						1			1	2	3	4	5					1	2	3	1	2	3	4	5	6	7
2	3	4	5	6	7	8	6	7	8	9	10	11	12	4	5	6	7	8	9	10	8	9	10	11	12	13	14
9	10	11	12	13	14	15	13	14	15	16	17	18	19	11	12	13	14	15	16	17	15	16	17	18	19	20	21
16	17	18	19	20	21	22	20	21	22	23	24	25	26	18	19	20	21	22	23	24	22	23	24	25	26	27	28
23	24	25	26	27	28	29	27	28	29	30				25	26	27	28	29	30	31	29	30					
30	31																										

- RECYCLING (yellow lid) + FOGO (lime green lid)
- GENERAL WASTE (red lid/dark green lid) + FOGO (lime green lid)

Bins collected a day later due to public holiday.

7000 Great Eastern Highway  
Mundaring WA 6073

☎ 9290 6666 (Option 1 for all waste enquiries)  
✉ [shire@mundaring.wa.gov.au](mailto:shire@mundaring.wa.gov.au)

[mundaring.wa.gov.au](http://mundaring.wa.gov.au)







# Healthy Living

ADVERTISING FEATURE

## Can the Wellness Centre help with your pain management and rehabilitation?

Everybody's ageing journey is different and physical abilities can vary from person to person. However, ageing well is possible for all when approached from a 'whole body' point of view. By taking part in gentle exercise and treatments with professionals assisting with your aims, your ageing journey can be improved in terms of mind, body and soul.

The Wellness Centre at Karingal

Green offers you the opportunity to have a professional assessment by a Physiotherapist who can suggest a personal plan for your ongoing health and wellbeing journey.

There are a variety of classes and sessions available to our community providing all levels of support with guidance and assistance where needed. The Wellness Centre also supports the residents in the award-winning Karingal Green Health & Aged Care

Community. The beautifully designed Wellness Centre is open to all and offers specialist health and wellness services to the local seniors' community. Open five days a week, the High Wycombe Centre supports our community in all surrounding suburbs and is focused on an ongoing wellness approach, encouraging visitors to work on strengthening and maintaining their fitness levels.

Professional services provided include:

- Physiotherapy
- Hydrotherapy
- Gymnasium Classes
- Pilates
- Massage Services

The Wellness Centre has a large, heated swimming pool with regular hydrotherapy classes for seniors of all abilities, supporting pain management and mobility. Clients can use their Home Care Packages, NDIS funding and Private Health funding to contribute to costs at Karingal Green's Wellness Centre - just ask our friendly staff for assistance and information with booking your assessment.

Come and join the Karingal Green Wellness community and start to enjoy a greater quality of life this winter.

Call the Wellness Team on 0490 940 371.

For more information, visit [karingalgreen-wellness.com.au](http://karingalgreen-wellness.com.au)



## Bloomin' Marvellous!



A. 'Bush Tenacity'

Darwinia oldfieldii

Hibbertia microphylla



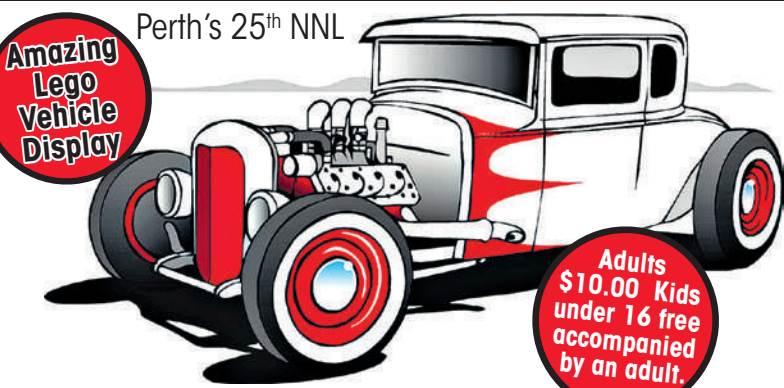
zanthorrea nursery  
155 Watsonia Road, Maida Vale WA  
www.zanthorrea.com (08) 9454 6260



Don't miss the 5<sup>th</sup> Annual

## Model Car Spectacular

Perth's 25<sup>th</sup> NNL



Amazing Lego Vehicle Display

Adults \$10.00 Kids under 16 free accompanied by an adult.

**Fantastic model cars, trucks and bikes!**  
**Slot car racing and R/C truck demonstrations!**  
**Model trade stalls and swap meet!**  
**Food and drinks available**

**Sunday**  
**14<sup>th</sup> July 2024**  
**9am til 4pm**

Contact Rob on 0405 468 464  
for more details or email at  
[modelcarspectacular@outlook.com](mailto:modelcarspectacular@outlook.com)

**Cyril Jackson Recreation Centre**  
**Fisher Street, Bassendean WA**



## One Tree Per Child

There are many benefits to trees in our lives, including: improving air quality, lowering the temperature with shade and helping support more of our native wildlife.

The act of planting a tree also has benefits to us and there is a new global campaign "One Tree Per Child" that aims to get kids out planting trees.

Tree planting gives children 'a sense of belonging'.

When they're planting a tree or shrub, the child is literally putting down roots in their community.

It empowers children into realising that they can make a difference for wildlife, our soil and the environment.

So jump online and have a look at <http://OneTreePerChild.com> and support this amazing community cause that benefits all of us.

The Barnes family supports the @OneTreePerChild push to get grandparents planting trees with their grandchildren. Here's Jimmy planting a tree with Dylan. The kids really enjoy it and as they grow, their tree grows with them!



## Perth & Districts Model Club Track Mania



Motoring enthusiasts of all ages will be amazed by the massive display of model cars, trucks and bikes being presented by the Perth and Districts Model Club this Sunday.

The show has evolved over twenty five years and Club president Alan Barton expects that last year's record of over 1300 models on display may be broken again this year.

Some entrants choose to assemble their models to accurately represent a full size vehicle in as much detail as humanly possible while others let their imaginations run free and create incredible fantasy vehicles. The models on display may be as small as 30mm long or as large as two metres long in the case of scale model road trains.

In response to increasing community interest in Lego brick models, a section of the display will be devoted to cars and trucks assembled from these colourful plastic bricks.

The Model Car Spectacular is on from 9am til 4pm, Sunday 14<sup>th</sup> of July at the Cyril Jackson Recreation Centre in Fisher Street, Bassendean.



# Karingal Green

HEALTH AND AGED CARE COMMUNITY

## Wellness Centre



**Karingal Green Wellness Centre provides health and wellness services for our seniors community.**

Our physiotherapists provide services including Hydrotherapy, Physiotherapy Treatments, Gym and Pilates Classes. We also have a Massage Therapist available. You are welcome to use your private health fund, Medicare care plan, DVA, NDIS or Home Care Packages at the Wellness Centre.

*Why not get started on your health and wellness journey at Karingal Green.*

**For your initial consultation call  
0490 940 371**



Wellness@karingalgreen.com.au  
53 Hawkevale Road, High Wycombe WA 6057

[Karingalgreenwellness.com.au](http://Karingalgreenwellness.com.au)

Proudly part of the Hall & Prior Aged Care Group

 **HALL & PRIOR**  
Health & Aged Care Group



# ENTERTAINMENT & GIG GUIDE

## Your local Gig Guide

### Friday 12 July

**Bassendean Hotel**  
Swipe Left. 7pm. Free.  
Live DJ. Late. Free.  
25 Old Perth Rd  
Bassendean

**Rose & Crown**  
Brooke Lambert.  
5pm-8pm. Free.  
105 Swan St Guildford

**Chidlow Tavern**  
John Chopping.  
6.30pm. Free.  
4 Thomas St Chidlow

**Parkerville Tavern**  
Dave Cooper.  
6pm-9pm. Free.  
6 Owen Rd Parkerville

**Woodbridge Hotel**  
The Heights.  
9pm. Free.  
50 East St Guildford

### Saturday 13 July

**Bassendean Hotel**  
Landslide (Fleetwood  
Mac/Eagles) Tribute  
Band. 8pm. Free.  
25 Old Perth Rd  
Bassendean

**Parkerville Tavern**  
Shane Turner.  
6pm-9pm. Free.  
6 Owen Rd Parkerville

### Saturday 13 July cont.

**Woodbridge Hotel**  
Unstrung Heroes.  
9pm. Free.  
50 East St Guildford

**Mount Helena Tavern**  
Bob Brisbane.  
6pm. Free.  
900 Keane St  
Mount Helena

### Sunday 14 July

**Bassendean Hotel**  
Julius Lutero.  
2pm-5pm. Free.  
25 Old Perth Rd  
Bassendean

**Chidlow Tavern**  
Jeremy Boyd.  
12.30pm. Free.  
4 Thomas St Chidlow

**Parkerville Tavern**  
Mark Stone.  
3pm-6pm. Free.  
6 Owen Rd Parkerville

**Rose & Crown**  
Jared Herft.  
2pm-6pm. Free.  
105 Swan St Guildford

**Glen Forest Sporting Club**  
Open Mic Night.  
4:30pm-9:30pm. Free.  
33 McGlew Rd Glen  
Forrest

Promote your event  
with *Echo's* Online  
**Entertainment  
& Gig Guide**

#### OPTION 1

### Large Display Banner

Linking directly to your  
website or ticketing outlet.

**\$100** p/w

#### OPTION 2

### Half Display Banner

Linking directly to your  
website or ticketing outlet.

**\$50** p/w

#### OPTION 3

### Free Text Listing

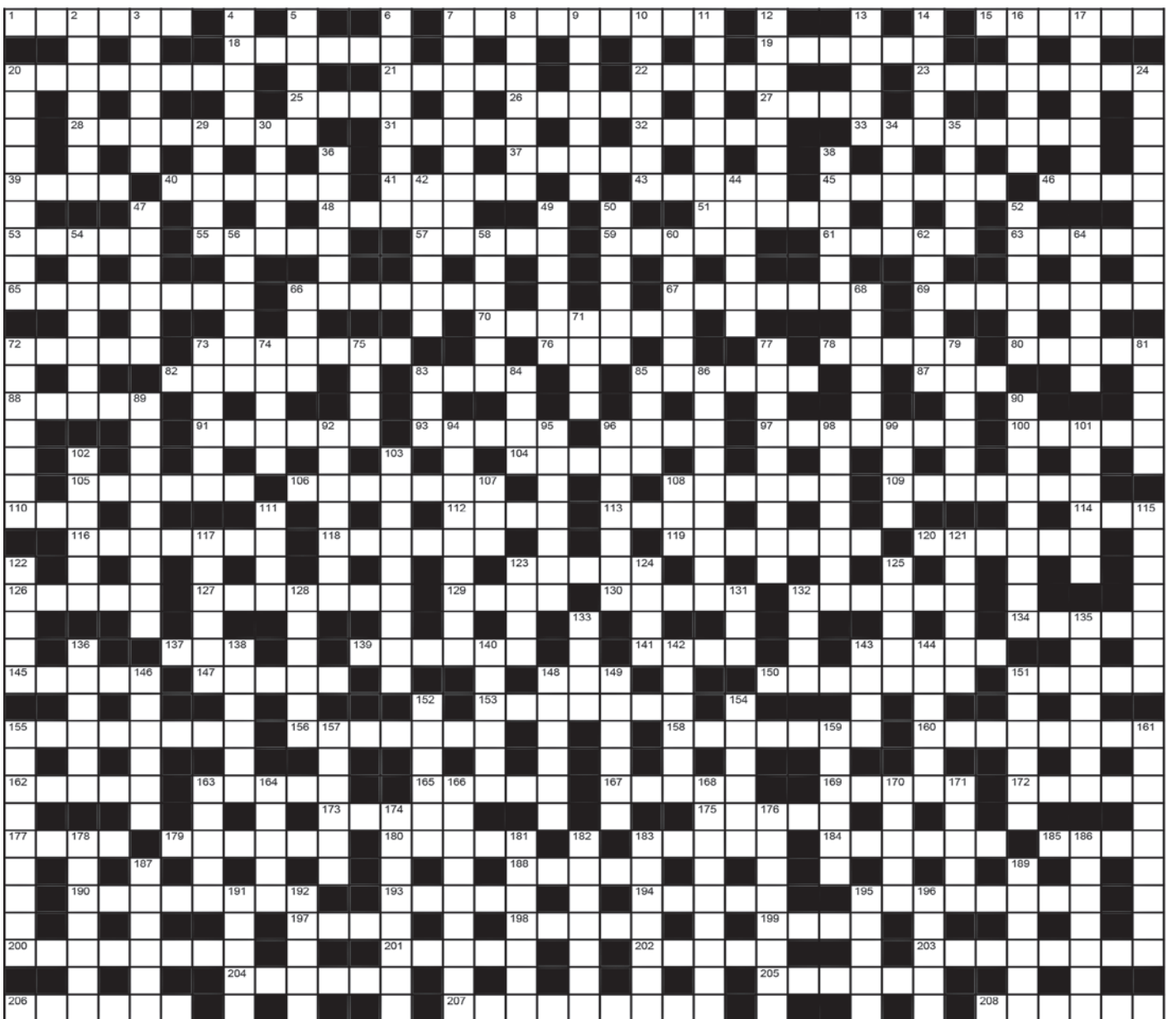
No link to website or  
ticketing outlet.

Contact Reed for more information  
on 9374 6600 or  
reed.lewis@echo-news.com

[www.echonepaper.com.au](http://www.echonepaper.com.au)

**ECHO NEWS**

# ECHO Mind Boggler Crossword 1175



#### ACROSS

- 1 Creepy-crawly
- 7 Happy
- 15 Imagined perfect state
- 18 Start again
- 19 A prophet
- 20 One's tradition
- 21 Farewell (Fr)
- 22 Dynamite inventor
- 23 Pleasingly rich
- 25 Looked at
- 26 Stiff
- 27 Small island
- 28 Royal lady
- 31 Inner-circle lines
- 32 Assessed
- 33 Headlong rush
- 37 Japanese dish
- 39 Long walk
- 40 Ten-year period
- 41 Hidden store
- 43 Entrance hall
- 45 Branched horn
- 46 Computer unit
- 48 A musical instrument
- 51 A failure
- 53 Fissile rock
- 55 Icy rain
- 57 River in Hades (myth)
- 59 US ski resort
- 61 Acting parts
- 63 Metallic sound
- 65 Operating doctors
- 66 A way down
- 67 Harvesting
- 69 Proclaimed
- 70 Unlawful ones
- 72 English racecourse
- 73 Calls by signal
- 76 A slippery fish
- 78 Absurd action
- 80 A hex
- 82 Fabled magician
- 83 Strong blast of wind
- 85 Trader
- 87 Goddess of Dawn (Grk myth)
- 88 Solemn promises
- 91 Lubricant
- 93 Reject with disdain
- 96 A couple
- 97 Circus performer
- 100 Copious
- 104 Bicycle lever
- 105 A tap
- 106 Annoy
- 108 Grown-ups
- 109 Veteran's sporting

- 110 Away from work
- 112 Sect
- 113 Cat's noise
- 114 Facial twitch
- 116 A legal restriction
- 118 Stage shows
- 119 Give solace
- 120 Gracefully slender
- 123 A mass of nacre
- 126 An engine
- 127 Interspersed
- 129 Woe!
- 130 Temperate
- 132 An accolade
- 134 Choice group
- 137 A charge
- 139 Border
- 141 Discharge violently
- 143 Crude hut
- 145 Grassy plants
- 147 Aqualung
- 148 A lettuce
- 150 Shrill-sounding insects
- 151 Car part
- 153 A louvred cover
- 155 Proof
- 156 Roundabouts
- 158 Lawman
- 160 A forebear
- 162 A hobo
- 163 Victorian river
- 165 Base for stores
- 167 Human trunk
- 169 Pleasing taste
- 172 Australian marsupial
- 173 Anchors a boat
- 175 Jetties
- 177 Coral formation
- 179 Theatrical group
- 180 Insipid
- 183 Changes direction
- 184 Ancient attempted flier
- 185 Whispered call
- 188 Childish
- 190 Railing
- 193 Bellows
- 194 A motor component
- 195 Entertain with music
- 197 Type of acid
- 198 A large box
- 199 Consequently
- 200 Majesty
- 201 Famous US battleground
- 202 Particles
- 203 Test act
- 204 Fingers

- 205 Chestnut colour
- 206 Body part
- 207 Captain Cook's vessel
- 208 Summerhouse

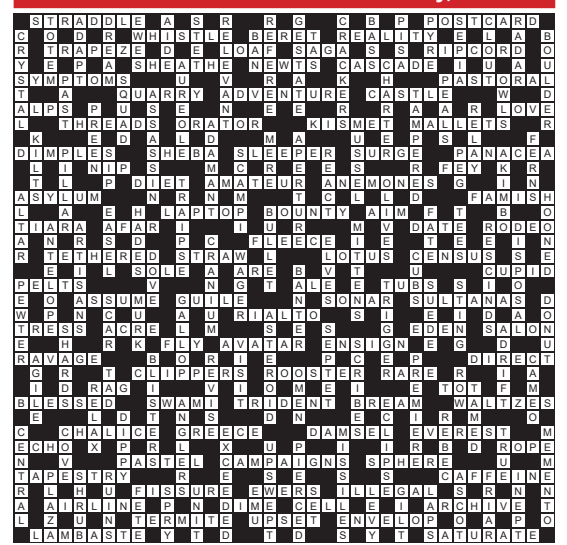
#### DOWN

- 2 Conscience
- 3 Feline favourite
- 4 A fine material
- 5 Cricket trophy
- 6 Cushion for the head
- 7 Working parents need this
- 8 Give good food
- 9 Write a poem of lament
- 10 A plant part
- 11 Worth discussing
- 12 Vacations
- 13 Muscular pains
- 14 River mouth
- 16 Proof of payment
- 17 Offspring
- 20 Bad breath
- 24 Under water
- 29 A board game
- 30 Garden tool
- 34 Full amount
- 35 Encounters
- 36 Grinding instrument
- 38 Infertile
- 42 Higher
- 44 Asian ornamental plant
- 47 Discover
- 49 Distant
- 50 Devil-may-care
- 52 Morsels
- 54 A stone fruit
- 56 Eavesdrop
- 58 Private teachers
- 60 Chase
- 62 Breathe out
- 64 Patron saint of Scotland
- 66 Titled person
- 68 A cavern
- 71 Be in front
- 72 Alligator pear
- 73 A dog
- 74 Apple drink
- 75 Not any
- 77 Podium athlete
- 79 Lads
- 81 An embankment
- 83 Aerated matter
- 84 Rainproof cover (coll)

- 85 A face
- 86 Small airport
- 89 Clumps of small trees
- 90 Heavenly body
- 92 Agitated
- 94 Ceramic material
- 95 Cuddles in
- 96 Poor people
- 98 A parrot
- 99 Explosive device
- 101 A billsticker
- 102 Consequence
- 103 Dock worker
- 107 Public transport
- 108 Curved line
- 111 Give out sparingly
- 115 Set solidly
- 117 Some gems
- 121 Controlling devices
- 122 A coal
- 123 Ashen
- 124 Diaries
- 125 Sit on eggs
- 128 Deadened
- 131 Uncooked
- 132 Norse god of discord
- 133 Ship speed
- 135 Lack of energy
- 136 Part of the eye
- 138 Inflammatory skin disease
- 140 Idle talk
- 142 Money keeper

- 143 An equal part
- 144 Leave empty
- 146 Nepalese person
- 148 Collect and prepare an exhibition
- 149 Begins
- 151 Sunken ships
- 152 Arctic plain
- 154 Famous painter
- 155 Taking money by force
- 157 Glossy coating
- 159 Petrified remains
- 161 Outback highway movers (4,5)
- 163 Enclosures
- 164 Road travelled
- 166 An ocean-side walkway
- 168 Onlooker
- 170 Delete
- 171 Break in fighting
- 174 Cloudy
- 176 Type of coffee
- 178 Clasp lovingly
- 181 Disagreement
- 182 Kneecap
- 183 Giddiness
- 186 Free of germs
- 187 Battery parts
- 189 Mooring area
- 191 Sluggish
- 192 Ladder parts
- 195 Regretful
- 196 Kingdom

#### Crossword Solution 1174 from 5 July, 2024





# ECHO Trades & Services

**9374 6666**  
classifieds@echo-news.com  
BOOK ONLINE: www.echonepaper.com.au

## Airconditioning & Refrigeration

**ACR**  
• Local Company  
• Local Prices  
Reliable & Efficient  
Lic. No. AU05609 Pensioner Discounts

For all your airconditioning & refrigeration service & installation  
**9454 9945**

## Bobcats

**BOBCAT - TRUCK EXCAVATOR ROCKBREAKER**

- Bobcat works, Earthworks & Truck Hire
- Driveways - Removals / Prep / Construct
- Excavation / Trenches / Drainage / Soakwells
- Shed & Tank Pads / Rockbreaking & more ...

Reliable Service **DAVE 0417 096 614**  
DW Cartage & Earthworks

**MIDLAND BOBCAT HIRE**  
BOBCATS, 8 & 12 TON TIPPERS, MINI EXCAVATORS

Free no obligation quotes and advice  
**Russell & Lynn Edwards**  
Owner/Operator  
**Russell: 0417 957 597**  
russlynn4@bigpond.com

## Bricklaying

**BRICKLAYER**

- Repairs
- Small jobs
- Free quotes

Ph: **Marcus 0402 708 791**

## Brickpaving

**LIMESTONE BRICKLAYING BRICKPAVING**

Retaining & Feature Walls  
Garden Beds etc  
Over 25 year experience  
**Ross Lucassen 9295 2837**

ASK ABOUT OUR GREAT PRICES FOR TRADES

## Carpentry

**CARPENTER/CABINET MAKER**

Sash Window Repairs / Renovations, Kitchens, Laundries, Robes & Vanities made and fitted. Doors, Frames & Architraves. Skirting & Shelving. 40 years experience.  
**NO JOB TOO SMALL. Call Terry 0401 743 027 / 9295 0797**  
telcocarpentry@bigpond.com

**Carpentry \* Joinery \* Cabinetmaking and Home Maintenance Services**

- \* Doors \* Decks \* Skirting \* Sash Windows
- \* Robes \* Kitchens \* Flatpacks
- \* Pergolas \* Shelving \* etc.

Pensioners Discount Fully Qualified  
Free Quote Call Mal **0400 250 761**

**MORGAN CARPENTRY & MAINTENANCE SERVICES**

ALL ASPECTS OF CARPENTRY & MAINTENANCE WORK  
• 15yrs commercial & residential experience • Insured  
• Fully qualified, professional & reliable • No call out fee  
• Full police clearance • Pensioners discount  
Call Kevin **0450 538 596**  
www.morgancarpentry.com.au e:Kdd.morgan@hotmail.com

## Ceilings

**CEILING & WALL RESTORATION**

ALL SMALL JOBS  
ALL REPAIRS & NEW ADDITIONS  
23 YEARS EXPERIENCE  
**9295 2041 OR 0402 270 688**

**CA INSTALLATIONS**

- Ceilings & Walls • All Facets of Ceiling Work
- Domestic & Commercial • Office Partitioning

All Reno Work Local and Loyal  
**0409 953 369**

## Concrete

**TIGER CONCRETE**  
FREE QUOTES • NO MESS NO FUSS  
Quality work, all types of concreting  
**Bobcat and Truck**  
**Mike 0407 989 927**

**SUNJICH'S CONCRETE**

- Bobcat - Truck and Compaction
- From Prep to Completion

FREE Quotes All Areas  
Call Zeljko  
**0417 902 301**

**B.C. CONCRETE DESIGN**  
Cracked Pea Gravel/Exposed Aggregate  
Crossovers • Shed Floors • Drives  
House Extensions • Patios  
**Bobcat & Truck**  
Call Anytime **0457 611 348**

## Driveways

**ALLIED BITUMEN**  
Free quotes  
Established 38 years  
All work guaranteed  
Fully insured

Asphalt driveways - Crossovers - Carparks - Potholes  
Kerbing - Linemarking - Earthworks - Drainage - Trenches  
**0418 912 569 | 9454 4411**  
alliedbitumen.com.au

## Electrical

**Mrs Fixit!**  
Female Electrical Contractor  
Free Quotes & No Call Out Fees

TV / ANTENNAS • LIGHTS • POWER POINTS  
SAFETY SWITCHES / RCD'S • SMOKE DETECTORS  
REPAIR & MAINTENANCE • HOT WATER SYSTEMS  
Seniors / Pensioners / HCC Discounts  
**MARDI GLADWELL 0430 035 345**

**Andrews Electrical Systems**  
Established 25 years • High Quality Guaranteed

- Residential ✓ Electrical Installations
- Commercial ✓ Electrical Maintenance
- Industrial ✓ Air Conditioning
- ✓ Telephone and TV
- ✓ CCTV and Data

Call Andrew **0420 956 432**  
Email: andrewsesperth@gmail.com

**ECHO NEWS**  
Discover our digital edition online  
www.echonepaper.com.au

## Fencing

**ALLBLACKS FENCING**  
Professional Kiwi fencer for all your farm & residential fencing requirements

**Marty 0484 595 985**

**Julian Jones FENCING & GATES PTY LTD**  
• Colorbond Fencing & Gates  
• All Slat, Pool & Security Fencing  
• Insurance Work & Removal  
• Automated Gates • Reliable Service  
**0408 288 622** #WARA1981

## Flooring

**Saints Timber Floor Sanding**  
Level to Fine Sanding and Polishing of All Timber Floors  
For an obligation free quote call Terry **0417 916 351**

**Looking for a tradie?**  
Now you can find a tradie in the paper AND on our website ANYTIME GO TO:  
**www.echonepaper.com.au**

## Gardening

All Areas  
**FULL BLOWN GARDEN MAINTENANCE**  
ABN: 77 592 171 029

- ✓ Rubbish Removal
- ✓ Dog Poop Removal
- ✓ Lawn Mowing
- ✓ Planting
- ✓ Weeding
- ✓ Pruning
- ✓ Hedging
- ✓ Yard clean ups
- ✓ Ride on mowing
- ✓ Pressure cleaning
- ✓ Bush fire ready clean ups

Fully Insured  
FREE QUOTES  
Police Cleared  
**Damien 0431 011 369**

## Gutter Cleaning

**Bobtail Gardens Gutter Cleaning**  
Gutter Vac Services

- Fully insured, registered business
- Fully self contained vac truck
- All waste removed from your property
- Obligation free quotes, Senior discounts

Phone Phil **0429 179 577**

## Gutters

**YOUR LOCAL GUTTER SPECIALIST**  
PROFESSIONAL SERVICE & REPAIRS

- GUTTERS & DOWNPIPES | NEW AND REPLACEMENT
- METAL ROOFING | NEW AND REPLACEMENT
- ROOF COATING AND RESTORATIONS
- MAINTENANCE
- LEAKS AND ROOF REPORTS

CONTACT PETE FOR A FREE QUOTE  
**9274 7663**  
sales@prowestroofing.com.au  
prowestroofing.com.au

## Handyman

**allwork HANDYMAN SERVICES**  
SPECIALISING IN ALL INDOOR AND OUTDOOR HOME MAINTENANCE

- Landscaping • Flat Packs • Painting
- Limestone Walls • Reticulation • Brickpaving
- Gutter Cleaning • Carpentry • General Repairs

Contact Trevor **0424 130 555**

- \* Pool Fencing \* Gutter Cleaning
- \* Furniture Repairs \* Painting \* Tiling & Paving
- \* Carpentry & Joinery \* Property Maintenance
- \* High Pressure Cleaning

Almost anything - just ask!  
Pensioners Discount Free Quote  
Mal **0400 250 761**

## Limestone

**Michael's Stonework**  
Servicing All areas

**Limestone & Coffee Rock**  
Small Retaining Walls, Steps, Pillars, Stone Pitching, Garden Beds  
For a FREE quote & reliable service call:  
**0427 190 273**

## Painting

**JIM OLSEN**  
Painter & Decorator  
FREE QUOTES - QUALITY WORK  
Reg# 3749  
**0430 339 118**

**WA COMPANY PAINTING**  
REPAIRS • INTERIOR • EXTERIOR  
CALL TREV **0414 289 145**  
WWW.PERTHPAINTING.COM  
DISC. AVAILABLE PERTH PAINTING CONTRACTORS REG 6173

## Painting

**PP Maintenance**  
ABN: 86 642 331 437  
**PAUL 0477 660 703**  
paul.percudani@outlook.com

- Painting (Interior & Exterior) • Demolition
- General Repairs • Pressure Cleaning
- Restoration Home or Office (pre sale or lease)

## Patios

**PATIOS and CARPORTS**  
Home Improvements Perth  
**0419 911 737**  
front@bigpond.net.au  
www.homeimprovementsperth.services

## Plastering

**EASTERN HILLS PLASTERING**  
ABN 69 373 874 693  
All Aspects of Plastering - Concrete Skim  
Coating - Acrylic Texture Finish - Renovations  
30 YEARS EXPERIENCE FREE QUOTES  
**TONY 0406 675 211**  
easternhillsplastering@outlook.com

To register ONLINE for your Trades & Services advertising... GO TO:  
**www.echonepaper.com.au**

## Plumbing

**Local Plumber Same Day Service**  
Hot Water Expert

- Upfront Prices
- Pensioners Save
- Drains, Taps, Toilets
- Burst Pipes, Gas

Emergency Plumbing 24hrs  
**6118 6368**  
PL9956 \*conditions apply

**The Tap Doctor**

FOR ALL PLUMBING & GAS

- Taps • Burst Pipes
- Toilets • Leak Detection
- Hot Water Systems • Blocked Drains

Call Today **1300 655 827**  
Our Service Will Amaze You  
PL6703 www.thetapdoctor.com GF10208

**Hi I'm Local In Your Area Hot Water Expert**

- ✓ Senior Discounts
- ✓ Upfront Pricing
- ✓ Fast Plumber
- ✓ Drains, Taps, Toilets

**\$0 Call Out\***

**Plumbing Emergencies 24/7**  
**6244 3226**  
\*conditions apply PL9956

## Plumbing

**LOCAL PLUMBER**  
PL9956

Same Day Service  
Blocked Drain, Taps, Toilets  
Burst Pipes, Hot Water  
Same Day Emergencies 24hrs  
conditions apply  
**9468 2581**  
NO CALL OUT\* + SENIOR DISCOUNT  
Your Best Local Plumber!

## Reticulation

CABLE LOCATION SERVICE  
DESIGN  
INSTALLATION  
MAINTENANCE  
36 years experience

**Reticulation and Landscaping**  
BORES INSTALLATION & SERVICE  
• PUMPS • SALES • SERVICE • MAINTENANCE  
email: paul@reticland.com.au  
Call Paul on 0412 900 145 or 9454 5762 or Aaron on 0429 515 222

## Roofing

**AMC ROOFING**  
Specialising in All Tiled Roofing  
New Roofs  
Maintenance & Repairs  
Free Quotes - Aaron Carter  
Mob: 0417 930 817

## YOUR LOCAL ROOF SPECIALIST

PROFESSIONAL SERVICE & REPAIRS

- METAL ROOFING | NEW AND REPLACEMENT
- GUTTERS & DOWNPIPES | NEW AND REPLACEMENT
- ROOF COATING AND RESTORATIONS
- MAINTENANCE
- LEAKS AND ROOF REPORTS

CONTACT PETE FOR A FREE QUOTE  
**9274 7663**  
sales@prowestroofing.com.au  
prowestroofing.com.au

**ROOF TILE REPAIRS**  
For all your Roof Tile Repairs  
Contact David for a free quote on  
**0413 240 203 or 9255 4003**  
Specialising in: Leak Repairs • Gutter Clean  
• Tiling • Re-ridging • Re-pointing

**AR Specialist Roofing**  
Solutions for all your roofing needs including

- roof restoration • gutters • leaks
- gutter guard installation • downpipes • sheeting
- custom flashings • gutter cleaning • carpentry
- house painting • roof cleaning • PATIO BUILDING

Call Andrew  
**0410 669 184**  
arspecialistroofing@gmail.com

**"Lets keep local people in work"**  
Support your local Business  
**ECHO NEWS**  
www.echonepaper.com.au

## Tree Services

TLC Tree Services has merged with  
**Payne's Tree Services**  
FREE QUOTES AND ADVICE

- MULCHING • LAND CLEARING
- STUMP GRINDING
- TREE LOPPING

Call Clint on **0455 132 014**  
paynestreeservices.com.au

**HILLS TREE SOLUTIONS**  
For all your Tree Lopping and Stumpgrinding Needs

- Locally owned & operated • Call 24/7
- Fully Insured • Cheapest Prices Guaranteed
- Horizon Power Accredited • Servicing All Areas

**CALL 9295 6511 OR 0414 438 610**



# ECHO Classifieds

9374 6666  
classifieds@echo-news.com  
BOOK ONLINE: www.echonepaper.com.au

## Employment



### Human Resources Officer

Geraldton, Kalgoorlie or Northam (12 month FTC with possible further term/perm)

Level/Salary: Level 3, \$79,156 - \$84,977 pa, PSCSAA

The Human Resources Officer provides information and support to managers and staff in accordance with Human Resource policy and processes in line with relevant legislation. Liaising with and acting as a conduit between the College and Training Sector Employee Services (TSES) in relation to recruitment, selection, appointment and payroll related matters.

To be successful in this role you will ideally have experience working in a busy and dynamic Human Resource environment, with a genuine commitment to assisting and supporting staff and managers with HR practices. Working as part of a small geographically dispersed team, you will be exposed to a broad range of HR activities ranging from advisory services, payroll, recruitment and reporting.

To Access Detailed Information: Go to jobs.wa.gov.au and key in the Web Search No 40000074. Applicants are required to apply online.

For Specific Inquiries: Please contact Rachel Paul, Coordinator HR on 9088 6771 or email Rachel.Paul@crtafe.wa.edu.au

Closing Date: Monday 22 July 2024 at 4.00pm (WST).

## Public Notices

### CITY OF SWAN

#### NOTICE OF PROPOSED LEASE OF LAND

#### SECTION 3.58 OF LOCAL GOVERNMENT ACT 1995

PROPERTY: Suites 3, 5, 7, 12, and 13 at Stafford Court, 8-12 Stafford St, Midland, WA, 6056

LESSEE: Arron Yarran trading as MaOchre

#### ANNUAL

RENTAL AMOUNT: \$52,897 plus GST and Outgoings per annum

#### VALUATION:

Suite 3: \$11,826

Suite 5: \$14,739

Suite 7: \$5,300

Suite 12: \$3,872

Suite 13: \$17,160

#### PURPOSE:

Commercial Office

#### TERM:

2 Years

Submissions, in writing, addressed to the undersigned, may be lodged on or before 28th July 2024.

Stephen Cain  
Chief Executive Officer  
City of Swan  
PO Box, Midland, 6936



## Yoga

### YOGA Monday & Thursday 6pm-7.15pm

60min Hatha based class + 15m meditation

Gooseberry Hill Hall, 42 Ledger Rd  
Ph Jeanene 0406 773 650



## ECHO NEWS

### Indemnity and Warranty

ECHO NEWSPAPER CONDITIONS OF ACCEPTANCE. When an individual or other legal entity ("the Customer") requests Echo Newspaper ("Echo") to place an advertisement in this Newspaper, they agree to be bound by the following terms and conditions:

- Echo, at its sole discretion, may decline to publish any advertisement requested by a Customer. If Echo decides not to publish a particular advertisement, there is no obligation on Echo to disclose the reasons for its decision, and Echo will not be liable for any loss or damage occasioned to the Customer as a result of the decision.
- Echo will not be liable for any loss or damage caused to a Customer as a result of delay or as a result of Echo failing to place a requested advertisement or publishing an advertisement containing an error or omission.
- Echo may, at its sole discretion, decide to refund a Customer a portion of the cost of the advertisement if it forms the view that the error was not attributable to the Customer and the Customer notifies Echo of the error or omission before 5.00pm on the day the advertisement first appears in the Newspaper.
- Complaints concerning the accuracy of any invoice must be notified to Echo within 30 days from the end of the month in which the advertisement was published, after which time the Customer forfeits any rights it may have had to challenge the invoices.
- The Customer warrants that publication of the requested advertisement/s will not contravene any laws, whether statutory, equitable or otherwise, and agrees to wholly indemnify Echo (and its employees and agents) against all expenses, loss and damage arising directly or indirectly from the publication of the advertisement/s.

# Kalamunda's 5% rate hike

from page 5.

"(That's) the job of the people with the real money and power - the state and federal governments, and the UN."

"Maybe if we stop trying to affect this global crusade from our little corner of the planet, then who knows, maybe we might invest some money so one day we don't have to hit our ratepayers to go on these little crusades."

Councillor John Giardina said he'd changed his mind about not supporting this year's budget as the new focus on investments and other funding methods came as a "breath of fresh air".

"Councillor Modolo hit the nail on the head," he said.

"Whether we agree with the climate change stuff and all that, I'm not talking about that.

"(The new chief executive officer) seems to be pretty keen to get involved in these matters when it comes to looking at other facets of funding we can attract.

"I'm very positive at the moment, in this space looking forward for this to happen.

"Hence, I've changed my mind and I'm supporting the current budget."

Councillor Geoff Stallard said he shared Cr Modolo's compassion for struggling residents but challenged his point on climate change being a responsibility beyond them.

"Whether we agree with climate change or not, I believe we are all responsible for what's happening, what's happened already and where we're going in the future," he said.

"In spite of what's been said, and while I agree with a lot of it, I think it's all our duties to roll up our sleeves and make some changes that will improve our life and lifestyles and stop us from depleting so many resources."

Mayor Margaret Thomas said she agreed with much of what was said.

"No one wants to put rates up and we worked so hard looking at everything, but we also don't want to drop services," she said.

"We've all seen how CPI is around the 4 per cent. We had no choice but to bring in a budget (increase).

"Initially it was going to be much higher. We've worked really hard to get it to 5 per cent.

"I also concur with Cr Modolo in that we need to look at other sources of revenue.

"We're doing that this year and I know our new chief executive officer's on board with that, so watch this space."

### Electrician

LITL Electrical  
All types of electrical work.  
Jeff Overton 0483 858 603.  
EC14844.

### Firewood

Ute load of dry seasoned hardwood. Cost \$350. Contact Shane 0422 652 249.

Get your firewood now. Dry split & delivered 4x7 trailer load \$245.00. 0452 541 069.

Firewood for sale. Dry jarrah and marri. 6x6 caged load. Free delivery. Ph 0429 988 079.

### Gardening

Bilby's Garden Services  
Weeds, Prune, Mow & Slash. Free Quotes 0416 855 335.

GARDEN MAINTENANCE Available by horticulturalist with Dipl Hort. Call Annette Eco-flora Design on 0418 957 388.

30+ years exp. Rose pruning, general gardening maintenance, small jobs preferred. 0419 947 402.

Ian Mac's whipper snipping, chain sawing and weeding. Small tree lopping jobs. 0426 211 137.

### Gardening

HILLTOP Mowing & Yard Maintenance Glen Forrest & Surrounding Areas PH: 0400 365 887.

### Gutter Cleaning

A Job Done Well. Gutters 100% cleaned. Fully Insured. Call Brendan for a reasonable quote. 0405 606 882.

Gutter cleaning & solar panel cleaning. Jason 0421 455 546.

### Holistic

Reiki Healer & House Clearing Specialist. Call Markus 0433 958 025.

### Lawn Mowing

Tony's Lawnmowing, Handyman & Firewood. Cheap rates. Midland & Surrounding Areas. 0431 831 948.

### Painting

Painting, Gardening, Pressure Cleaning. 0477 660 703. Local.

### AAA PAINTING INTERIOR/EXTERIOR

For very competitive prices and old fashioned service Ph Nathan on 0409 247 293 (Reg. No. 6605).

### Painting

High Pressure Cleaning, roof painting & internal painting. Ph Markus 0433 958 025.

### Plumbing

MASTERS PLUMBINGAS All Plumbing & Gas work, Blockages, Hot water units, Leaks, Renovations, Burst pipes. 24/7 Emergency Service. NO CALL OUT FEE David: 0416 644 191. PL-9554 GF-011284

### Regrouting

Bathroom Regrouting. Call Andrew 0413 158 763.

### Solar Services

Solar Panel Cleaning with Anti Mould & Solar Wax Treatment. 0421 455 546.

### Wanted to buy

Records, LP's or 45's collections + turntables + cassettes. 0424 489 910. Guildford.

### Window Cleaning

Tatania's Window Cleaning. Tracks, Frames & Fly screens. 0467 282 127.

# ECHO Notice Board

A free service for non-profit organisations

9374 6666

editorial@echo-news.com

## Upcoming Events

• **Casson Community Garden**, which operates on Wednesdays from 10.30am to 12.30am at 9 Wilkie Street, South Guildford, is calling for enthusiastic gardeners who want to volunteer. Parking on Bridge Street with Casson based at the end of the street towards the river. Morning tea is provided. There is access to a permaculture expert on site. Funded by the City of Swan Casson is a not-for-profit improving the lives of people in recovery from mental health conditions. Call Margaret to RSVP 0434 308 114.

• **Midland CWA** meets at the Midland Railway Yards Blacksmith Lane (West) Midland on the third Wednesday of each month at 10am. CWA Flags are displayed on Yelverton Drive, Midland on meeting days. CWA offers a diverse range of interests and each

branch works to meet local community needs. Call Maureen on 0460 777 557 or email maureenbarker1@gmail.com

• **Midland Ascension Craft Group** meets in the Parish Hall, 17 Spring Park Road, Midland every Tuesday of school term from 1pm to 3pm. All most welcome to join for a chat, cuppa, any craft and sometimes a guest speaker. For more information call 0433 265 683.

• **Midland Men's Shed** Social Tuesday is every Tuesday from 9.30am to 11.30am in the Baptist Church Hall, Bellevue. For more information call Kevin on 0417 961 971. For workshop inquiries call 0411 833 055.

## Woofers of the week



Marley is a seven-year-old American Bulldog. She is a real couch potato. She is good with children and other animals and is very affectionate. She is sterilised, vaccinated and microchipped. Costs apply. Contact Bakers Hill Dog Sanctuary on 9574 1438.

## Read between the lines

by Pastor Ian Kirk



### Slipping and Sliding

While on holidays recently in Tasmania with our two ten-year-old granddaughters, we managed to see snow. That's what they were hoping to see - as well as make a snowman and throw some snowballs at grandad.

It was great we saw snow, but the snow fell because of a polar air blast - it was freezing (even for Tasmanians)! Water pipes froze and ruptured, causing some places we stayed at to have no water, including no hot water for showers.

The greatest concern, though, was the roads. Quite a number of times ice covered the road, making it very slippery and dangerous. The most terrifying time was hitting snow on a steep descent. I'm so thankful I slowed down in time, but we still managed to slip and slide a fair way. We could easily have gone off the road, but we managed to stop - just before a corner!

In life, we can slip and slide, and even crash, with choices we make and with circumstances that come upon us. How good it would be to have someone steer us when we are slipping and sliding - so that we don't crash.

I am so thankful for Jesus, God's Son, as he pilots my life. He is able to steady me and steer me so that I don't crash - even when my slipping and sliding is due to my wrong choices. He is so good and gracious - to all who would turn to Him and trust in Him.

Do you have something to Celebrate?

Why not announce it in the Echo?

Call 9374 6666 to share your special news.







Mt Helena faced a ruthless Swan View in round 13 of the HFA competition.

## Swan View belt Mt Helena at Brown Park

BRIAN PALLISTER

**IN round 13 Mt Helena was belted by Swan View at Brown Park in a 30.24 (204) to 0.0 (0) match, which followed the annual Bruno Farina tribute game.**

Swan View applied pressure from the first ball up with Bradley Jetta, Josh Holingum and Rudy Ridoch swooping on anything loose around the contests and getting the ball forward for Kane Higgins to mark and convert.

Dane Rossen was a clear winner across half forward pulling down several strong marks.

Lions Riley Maturo, Bo Read and Jai Blackman did all that they could to stop the avalanche but the ball came back in as quick as they could clear it out.

Whenever Mt Helena managed to enter their forward line Swans Joseph Butler and Josh Morris were there to rebound the ball back out.

Josh Holingum seemed to be everywhere, often drifting forward and finished the game with six goals.

By the half time mark the Swans had opened up a 74-point lead.

The Lions could not find a way to slow down the Swans momentum as more and more of their players started to join the goal kicking queue with 16 contributors.

Jordan Lucy has become a crowd favourite with what appears to be his own cheer squad.

Jake Dyer combined with Harlee Fryer along the wing and half forward to keep the entries coming.

The Swans kicked a further 10 goals in each of the last two quarters to finish the game full of running, making it a difficult task to choose award recipients with so many contributors.

Full credit to the Mt Helena players for running out a very tough game, then spending enough time after the final siren to shake their opponents hands in a show of respect and sportsmanship.

Next weekend the Hills Football Association (HFA) has a general bye as a combined team competes in the Nutrien AG country carnival.

Fixture and live stream details are on HFA's Facebook.

## High Wycombe veteran to play his 350th game

MIKE PEETERS

**HIGH Wycombe footballer Jeremy Allan will play his 350th game for the High Wycombe amateur football club (the Bulldogs) on Saturday, July 13 at Scott Reserve.**

The first player at the club to reach this milestone, this is Allan's 26th season playing for the Bulldogs.

A proud sponsor and life member of the club, Allan said he planned to play on, body willing, to 400 games.

Footy is in the blood for Allan, who has played alongside his eldest son Brandon, and also coached the High Wycombe Junior Football Club first all-girls team with his daughter Zoe.

"I have really enjoyed introducing five of my children to football," Allan said.

"It has been great to see them progress and enjoy their footy."

Allan is also a keen boxer and recently officiated at the IBF (International Boxing Federation) lightweight world title fight between Australia's George Kambosos Jr and Vasiliy Lomachenko of Ukraine at the RAC Arena in May.

**Jeremy Allan looking forward to his 350th game.**



## Swans Districts clip Falcons wings



Swan Districts player Brad Lynch kicked three goals in his team's 63-point win against West Perth. Photo credit: Blake Parry

CHRIS PIKE

**SWAN Districts WAFL team has now won six straight matches after piling on 21 goals with Leigh Kohlmann returning with six of them in a 63-point win against West Perth.**

Swans started the match at Joondalup having already won five straight matches with plenty of momentum ahead of taking on a Falcons team on their own five-game losing run, but who did win a premiership as recently as 2022.

Both teams then kicked six goals apiece in the opening quarter, but it was Swans who added four goals to three in the second term, six to one in the third and five to one in the fourth.

The 11 goals to two in the second half eventually saw Swan Districts score the 21.16 (142) to 11.13 (79) victory giving them an 8-4 win-loss record to now sit in third position after round 14.

Swan Districts spearhead Kohlmann played his first game since round eight after being sidelined with concussion and starred with six goals from 12 kicks and six marks.

Brad Lynch also kicked three goals for Swans, Jackson McLachlan three, Aidan Clarke two and Tom Edwards two with 10 players all kicking at least one goal for the afternoon.

Not only did Swan Districts kick 21 goals to 11 for the game on the back of 37 scoring shots to 24 and having 85 extra possessions, but they had some hugely impressive big ball winners throughout the game too.

Nik Rokahr racked up another 33 possessions while Jye Chalcraft finished with 32 touches, Clarke 27, Josh Cipro 25, Jarvis Pina

22, Jesse Turner 22, Edwards 20, McLachlan 20, Jake Pasini 19 and ruckman Nathan Blakely 23 to go with 14 hit outs and six marks.

It was a remarkable opening quarter from both teams featuring 12 goals with six apiece in what was quite the spectacle.

West Perth did kick the first two thanks to Tyler Keitel before returning Swans spearhead Leigh Kohlmann answered with the next two.

Aidan Clarke, Lynch, Kohlmann and McLachlan then combined for the other four goals before quarter-time for the black-and-whites but West Perth was able to match them and lead by a point at the first break.

Swans regained the lead with a goal in less than a minute of the second quarter through Jesse Glass-McCasker before McLachlan and Lynch kicked their second each of the game to push the lead for the visitors out to 17 points.

But the Falcons were sticking with them and kicked three goals in response and Swans went into the half-time break with a 13-point lead on the back of a first half featuring 19 goals between the two teams.

West Perth was then back within a point to start the second half when Keitel kicked another goal, but Swan Districts then took complete control of the game.

Kohlmann kicked three more goals in the space of seven minutes with goals also to Luke Kelly, Jehb O'Donohue and Josh Cipro which saw the lead grow to 41 points.

Swan Districts went on with the job from there with another five goals to one in the fourth quarter with the goals coming from Clarke, Edwards, McLachlan, Lynch and Edwards.



# ECHO Local Real Estate

Residential  
Commercial  
Rural & Country

## FOR LEASE



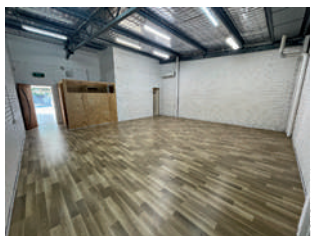
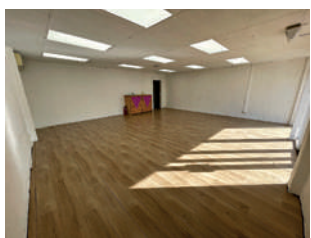
## Studio with shop front

Located in the heart of Midland this property features approximately 256sqm of space, featuring modern glass-front store, ideal for showcasing your products or services in a prime location.

The shop front/reception area offers a welcoming space for clients, complete with a convenient sink. As you move to the back area, you will find a versatile studio space, perfect for a variety of uses. This area includes two bathrooms, one of which features a shower, making it ideal for businesses that require changing facilities. Both bathrooms are equipped with toilets and vanities.

The entire space features laminate flooring, providing a clean and contemporary look that's easy to maintain. With its flexible layout and convenient amenities, this property offers endless possibilities for your business.

Don't miss out on this fantastic opportunity! Contact Maria Downes today to schedule a viewing and make this space your own.



Call Maria Downes  
0430 214 455

**Professionals**  
5 Star Realty

9274 1655



To feature your property in the real estate pages please contact the Echo sales team on 9374 6666 or email: sales@echo-news.com



## REIWA welcomes Keystart changes

**THE increases to Keystart's property price limits and income limits will help more Western Australians into affordable home ownership sooner, according to REIWA chief executive officer Cath Hart.**

The new limits will be set using REIWA median house prices and regularly reviewed to reflect market conditions.

Ms Hart said Keystart provided a valuable service offering loans with as little as 2 per cent deposit and does not charge lender's mortgage insurance, which is of great benefit to people who find it difficult to get a loan with a traditional lender.

"The loans are subject to price and income limits, which have been unchanged for some time, and the strong property price increases of recent years have resulted in many people being unable to access these loans," she said.

"Lifting the price and income thresholds means the loans will be available to more West Australians, allowing them to make the move into home ownership."

She said REIWA was proud to have played a role in the review.

"As the peak body for real estate in WA we have unique insights into the WA property market and our data shows what is happening now.

"Linking the price limits to REIWA's medians means they will reflect actual market conditions and can move with the market as it changes.

"This will ensure as many people as possible remain eligible for Keystart loans."

As well as changing the price limits Keystart has updated its income limits.

These will reflect the income required to service the property price limits.

The new property price limits and income limits effective 4 July 2024 are:

	Previous property price limit	New property price limit	Previous income limit	New income limit
Low Deposit Home Loan	\$560,000	\$650,000*	Singles: \$105,000 Couples and families: \$155,000	Singles: \$137,000* Couples and families: \$206,000*
Shared Ownership Home Loan	\$412,000**	\$535,000*	Singles: \$70,000 Couples and families: \$90,000	Singles: \$113,000* Couples and families: \$174,000*

Figures based on REIWA data as at 31 May 2024.

\* The new limits apply throughout the state, excluding the Kimberley and Pilbara regions.

\*\* This property price limit does not include SharedStart loans.

## Swan suburbs show strong growth

**BULLSBROOK and The Vines are two suburbs to record the most growth in Perth property prices in June, according to REIWA.**

The suburbs that saw the most growth last month were Queens Park (up 3.4 per cent to \$553,000), Bullsbrook (up 2.8 per cent to \$575,500), Langford (up 2.4 per cent to \$512,000), The Vines (up 2.3 per cent to \$875,000) and Wannanup (up 2.2 per cent to \$690,000).

Bertram, Piara Waters, Caversham, Seville Grove and Leeming were also among the top performers, recording growth of 1.8 per cent or more over the month.

REIWA chief executive officer Cath Hart said houses in the Perth property market reached a new record median sale price of \$660,000, up 1.5 per cent on the \$650,000 reported in May and 17.9 per cent higher than June 2023.

The median unit sale price also rose over the month, increasing 1.3 per cent to \$440,500. This

was 10.1 per cent higher year-on-year.

"While house prices have been setting new records for some time, units remain below the previous record of \$450,000 set in 2014," she said.

"Based on current growth rates they could exceed that in the next few months.

"This is welcome news for people who bought a unit over a decade ago and have been waiting for capital growth.

"It is also a positive sign for new apartment development.

"The discrepancy between unit prices and increased building costs has meant only higher-end apartment projects have been financially feasible for developers.

"This has limited the provision of diverse and affordable housing options for home buyers and investors.

"Growth in the median unit sale price may help stimulate new, more affordable projects."

# 185 ACRES



2276 Toodyay Rd, Gidgegannup

- 185 acres (75 hectares)
- Stunning private valley
- Winter creek
- 3 spring-fed dams
- Multiple house site locations
- 15 Min Roe Hwy
- Edge of Gidgegannup townsite

**brookwood**  
Real Estate Agents



Ken Wiggins  
0403 012 950  
ken@brookwoodrealty.com.au



# ECHO Local Real Estate

Residential  
Commercial  
Rural & Country

## Joyful modernity in Jane Brook pocket

**SITUATED** on an easy-care and manicured 525sqm block in a very sought after part of Jane Brook is this beautiful two-storey home full of class.

If you are searching for a property where you can just start living and enjoy what is on offer including the beautiful surrounds, then this home with its big statement in style will tick those boxes.

With four bedrooms and three bathrooms, this residence is well equipped to handle family life.

As you enter the home through the extra wide entrance and passageway, it will be hard to miss the spotted gum timber floors that characterise the space downstairs.

The house has an open plan kitchen, dining and family living area with easy access to the backyard area and plenty of big glass sliding doors letting in natural light.

The stylish modern kitchen comes with separate scullery to keep the food preparation and clean up steps neatly divided from each other.

An extra living room apart from the open plan area is perfect for repurposing into a separate media or theatre room.

The main bedroom upstairs also has a separate parents retreat behind sliding panel doors.

There, the windows offer a view of the hill range and a corner which allows for a compact study space over-

looking the neighbourhood.

The main bedroom continues to take the spotlight with its stacks of wardrobe and walk in robe space.

Plantation shutters through the home offer a unified design feel and effective moody darkening of rooms when the occasion calls for it.

The whole residence is fitted with ducted reverse cycle air-conditioning throughout, and a 5.5 kw solar panel system with Fronius inverter to cut on costs.

A large patio alfresco entertaining area with fishpond continues to uphold the modern elegance, and with a lawn area and full fencing, pets and children can play safely at home.

Augustus Park and a kids' playground are but a casual stroll away, and the heart of Midland is within a 10-minute drive.

**Address: 8 Chichester Way, Jane Brook**  
**Price: From \$1.2 million**  
**Agency: The Agency**  
For more information contact Patrick Harper on 0413 440 107



# REAL ESTATE Plus

.com.au



**CHIDLOW**  
9572 4113

**MIDLAND**  
9274 5000

**COMMERCIAL & INDUSTRIAL**  
6146 3333

**MIDLAND FROM \$388,000**

**MODERN UNIT IN SUPER CONVENIENT LOCATION**

10/4 Cale Street



- 2 Bedrooms, 1 Bathroom
- Tiled flooring thru out
- Modern Kitchen with gas cooking
- Dishwasher and Island Bench
- Balcony

Milton  
0411 752 812  
Midland  
9274 5000

**CLACKLINE \$660,000**

**A BLISSFUL EXISTENCE**

130 Benrua Road



- Delightful 1Bed 1Bath Log Home
- Relaxing O/Plan Living, Aircon
- Solar Panels Battery Ready
- Pasture, Arena, Round Yard
- Approx. 7 Acres, Fenced

Alison  
0428 914 085  
Chidlow  
9572 4113

**PORT KENNEDY FROM \$638,000**



**THE FAMILY HOME**  
18 Bluefields Parkway

- Four Bedrooms
- Evaporative Airconditioning
- Two bathrooms
- Double carport with roller door
- 608 sqm block

Milton  
0411 752 812  
Midland  
9274 5000

**MUNDARING \$10,000 P/M + O/G's + GST**



**LARGE INDUSTRIAL SITE**  
34 Wandeara Crescent

- 700sqm workshop
- Two evaporative Air Conditioners
- Owner will keep 4 x 40 ft containers on site
- Adjoining caretakers residence with kitchen and bathroom

Mike  
0403 621 899  
Comm & Ind  
6146 3333

REAL ESTATE Plus

Plus LOANS  
ACL: 383 631

Plus Your Settlements





**BRAND NEW!  
LIMITED STOCK**

**SAMSUNG  
UA43BU8000W 43" UHD  
4K SMART TV  
Only \$479**



**MONARCH SNM-210B  
Only \$299**



**MONARCH SNM-215B  
Only \$349**

**OPEN TILL 7PM**

Monday to Friday 9am-7pm Saturday 9am-5pm Sunday 11am-5pm

Unit 6/401 Great Eastern Hwy MIDLAND

Ph: 9274 1447



# 10% OFF ALL HEATERS

**KENT JINDAYBYNE**

This robust radiant heater has plenty of character and is ideal for those seeking an economically priced heater with maximum heat output. COVERAGE 180m<sup>2</sup>.



**\$1495**

**KENT CALISTO SMALL**

Designed to be more efficient than ever, the Kent Calisto Small Freestanding Wood Heater combines technology with modern design. With coverage of up to 200 square meters, the Calisto is the perfect choice for Small to Medium sized spaces.



**\$2395**

**PRIME 200C**

Heats up to 200 square meters. 10 year warranty. 6mm thick size. 3 Speed fan.



**\$1549**

**GEN 2 WITH LEGS**

Burns up to 7 hours. 3 Speed fan. 10 year warranty.



**\$1995**

**PRIME RADIANT HEATER**

Heats up to 150m<sup>2</sup>. Burn time of up to 5 hours. 5 Year Warranty.



**\$899**



**MODERN FLAME ELECTRIC HEATERS**

Leading the way in Electric Fireplace design and technology, Modern Flames has a line of contemporary fireplaces that create luxury and ambiance in any Residential or Commercial setting. Since 2008, Modern Flames has been pioneering their contemporary line of electric fireplaces. Now architects, designers, builders and homeowners have all adopted the Modern Flames fireplace because of the realistic flame appearance paired with contemporary designs, ease of installation, and the low overall operating costs! 20 models available ranging from 1m up to 3.5m.

PRICES START AT

**\$1695  
2M Model  
\$2999**

**WINTER IS HERE**

**RINNAI SS850**

With gentle flickering flames and cosy warmth, our Sapphire built-in gas fire gives you all the appeal of an open fire, but without all the fuss that goes with it. Coverage 108m<sup>2</sup>.



**\$6790**

**KENT FAIRLIGHT**

Sleek and sophisticated, the Kent Fairlight Freestanding Wood heater features clean and simple lines for the ultimate modern home. Brand new to the market, the indoor Fairlight wood heater range is striking in looks yet packed with the latest features.



**\$4594**

**KENT SOMERSET MKII**

Perfect for heating small to medium sized spaces, the Kent Somerset MKII wood heater covers up to 200 square meters. Constructed of solid 6mm steel, this Kent wood heater is strong and efficient and comes with a 10 year firebox warranty.



**\$1995**

**COUNTRY CLASSIC**

5 Speed Fan. Heats up to 300m<sup>2</sup>. Log Size 390mm. Burn time up to 8.5 hours. 10 Year Warranty.



**\$2295**

**CLEAN AIR MEDIUM**

The Medium Console is generously designed for the average home of up to 300m<sup>2</sup> and uses the advanced Clean Air firebox design for outstanding performance and durability.



**\$3955**

**SAXON MAHOGANY**

Designed to heat a large family home, the Saxon Mahogany freestanding wood heater features coverage of up to 350 square meters and a burn time of up to 10 hours.



**\$3895**

# BARBECUE BAZAAR

WA OWNED | OPEN MON-FRI 9AM-5PM SAT 9AM-4PM SUN 11AM-3PM

**CANNINGTON  
1399 Albany Hwy  
Ph: 9458 5724**

[www.bbqbazaar.com.au](http://www.bbqbazaar.com.au)

PHOTOS FOR ILLUSTRATION PURPOSES ONLY