

# ECHO NEWS

SINCE 1985

# NEWS

Friday, December 13, 2024

Certified Practising Conveyancer Independent Settlement Agent

YOUR SETTLEMENT YOUR CHOICE



**Anne Lynch**  
CONVEYANCING  
Property Settlements Agents

Licensee: Anne Lynch P: 9572 2200 M: 0419 572 297  
3 / 7145 Grt Eastern Hwy, Mundaring  
E: annelynch@conveywa.com.au

Local Business Supporting Local People

VOL.42 NO.1894

**Swan votes against Guildford childcare**




**PG3**

**Christmas cheer with Ascension Connection**



**PG4**

**Social housing tiny homes completed in Northam**



**PG6**



Picture: Guanhao Cheng

## Midland DV march calls for action

Last Thursday the WA Police band marched with the crowd for the 11th annual Midland March That Matters playing music to symbolise the noise they wanted to make to break the silence around violence. **PG5**

**CARING FOR YOUR PETS**  
DOG & CAT FOOD, PRODUCE FOR COWS, HORSES, SHEEP, ALPACAS & POULTRY. SMALL SUPPLIES OF HORSE ACCESSORIES & MEDICINAL SUPPLIES

*We would like to wish everyone a Merry Christmas and a safe and happy New Year*

**24hr DIY DOGWASH**

**WE ARE NOW STOCKING NATURAL ANIMAL NUTRITIONISTS PRODUCTS!**  
Ask our friendly staff for more information about their wormers and anti inflammatories.

WE SELL RABBITS, BIRDS, GUINEA PIGS, MICE, RATS & CRAZY CRABS

We Sell Mealworms, Crickets and Woodies

**BEGONIA PETS & PRODUCE**

**YES! WE DO DELIVER**  
OPEN 7 DAYS: MON-FRI 8am-5.30pm  
SAT 9am-5pm • SUN 9am-1pm  
5895 GREAT EASTERN HIGHWAY (cnr Coppin Rd), MUNDARING

**NOW OFFERING KEY CUTTING (MON-FRI)**

**A FAMILY OWNED & RUN BUSINESS**

Follow us on  &  to see our specials

**9295 2001**

**ROHAN FOX**  
Automotives

**9295 0955**

10 Wandeara Crescent, Mundaring Trade Centre

- New car servicing
- Fuel injection service
- All mechanical repairs
- Brakes & clutch
- Lube servicing



**REA**  
Mundaring

MRB7063

www.rohanfoxautomotives.com.au

**The Jewellery Centre**  
YOUR OWN LOCAL JEWELLER *Specialising in*  
Repairs • Sales • Designs

Gift Vouchers Available



*If we don't have it ... We can get it.  
If we can't get it ... We'll just make it!*

The Jewellery Centre have jewellers on site at all times to provide any jewellery services you need!  
If you imagine it! And see it in your mind's eye!  
**We can make it for you!**

The Jewellery Centre *Your Trusted Jeweller* **9295 1667** Shop 5, Woolworths Shopping Mall, MUNDARING



# SMILE

@ Foothills Denture Clinic

- ✓ New full dentures & partial dentures
- ✓ New implant retained over dentures
- ✓ Denture repairs & relines
- ✓ Sports mouthguards

Phone **9250 1733** for an appointment

FOOTHILLS DENTURE CLINIC

SHOP 4, 16 THE AVENUE, MIDLAND

www.foothillsdenture.com.au

DENTAL PROSTHETISTS

MALCOLM J McARTHUR RAYNEE McARTHUR

We also deal with Veterans' Affairs and all health funds through HICAPS | HICAPS | hbf | medibank



RESEARCH HAS FOUND PRESENCE OF NATIVE FLOWERING PLANTS IS THE PERFERRED FOOD SOURCE OF ALL SPECIES OF BEES AND THAT PURPOSED BUILT "BEE HOTELS" IN BUSHLAND ARE MORE LIKELY TO BE OCCUPIED THAN HOTELS IN HOME GARDENS.

Originally published June 16, 2023.

ADVERTISEMENT

Here to help!

## DONNA FARAGHER

JP MLC

MEMBER FOR EAST METROPOLITAN REGION

Shadow Minister for Community Services; Early Childhood Education; Seniors & Ageing; Youth

Ground Floor, 108 Swan Street Guildford 6055  
9379 0840 | faragher.eastmetro@mp.wa.gov.au

Authorised by D.Faragher, Ground Floor, 108 Swan Street, Guildford WA 6055

## ECHO YOUR THOUGHTS

Have your say: [editorial@echo-news.com](mailto:editorial@echo-news.com)

### 'DV' is domestic violence

Dear Echo News,

To all those who seek to end the scourge of domestic violence in all its forms, I have a plea: use the full name, every time.

Do not abbreviate it to 'DV' – which all-but removes its meaning and certainly diminishes its importance.

If it's worth discussing and if it's worth the attempt at stopping domestic violence, once and for all, it's worth saying and writing its name in full, every time.

Domestic violence may be perhaps the most shameful of all crimes committed but that doesn't mean we should shy away from naming it.

Meanwhile, thank you to those who work so tirelessly and passionately to bring an end to this blot on our society.

**P Carman Hovea**

We have seen another devastating year for people financially in 2024. The Salvos have seen an increase in demand for our services. Individuals and families who have never reached out to a charity before are doing so for the first time this year.

In fact, recent research from the Salvos found that seven in 10 Australians are watching their spending more this Christmas compared to previous years.

But there is hope. Throughout the Christmas period, The Salvation Army distribute hundreds of thousands of gifts and toys, food hampers, special Christmas meals and much more to those who are doing it tough in our community.

We also provide safe places for community and connection. We often find that a friendly chat or a shoulder to cry on can be just as powerful as the practical support of gifts, meals and hampers.

The Salvos want everyone to know that we are here for you this Christmas if you need support. No child should have to go without a present on Christmas Day, no person without a special Christmas meal, and no one without a place to go for community and connection. Reach out to us if you need a hand.

We also can't do this work without the support of the Australian public through our Christmas Appeal, which is aiming to raise \$27 million this year so Aussies don't have to go without this Christmas.

If you need help this Christmas, or if you are able to donate to The Salvation Army's Christmas Appeal, please visit [salvationarmy.org.au](http://salvationarmy.org.au) or call 13 SALVOS (13 72 58).

**Colonel R Walters**  
The Salvation Army

### Thought for the day

"The only thing that overcomes hard luck is hard work"

— Harry Golden

### No EV for Midland planned

Dear Echo News,

Can you believe it? It is 2024, and despite spending millions of taxpayer dollars on the new station there is no strategy or provision for EV charging.

Swan councillor Sarah Howlett has tried to raise the alarm, but it has fallen on deaf ears.

The issue is much bigger than EV charging.

While cities like Barcelona have reduced ICE vehicle use by 40 per cent saving the nation huge import costs on fossil fuels our governments local and state seem to think that transition will come along in its own time without proactive planning.

Yet Midland MLA Michelle Roberts has offered to match federal funding from Tania Lawrence to provide separated personal EV and bike lanes north, south, east and west from the station so that school kids and commuters can ride from Swan View, Guildford, West Midland and Greenmount safely to the station taking loads of traffic off our busy roads.

Forget putting solar on prime farming land. How about putting rooftop solar on all car parks and the huge warehouses in Midvale so people can recharge during the day when they are at work.

Is it pure laziness or is it climate denial? It's time for a community forum to tell our politicians what we need for our kids' future.

**C Hughes**  
Midland

Privately owned & proudly independent

Due to lack of space, the crossword will not be running in this week's edition.

We apologise for any inconvenience.

Please check our website for the crossword and last week's solution.

The Echo reserves the right to edit letters for length, legal reasons or clarity. The opinions expressed do not necessarily reflect those of the Echo. All letters must contain the author's full name, address and phone number for verification purposes.

**Disclaimer:**

All election-related editorial content published by Echo News is prepared in accordance with our editorial policies and principles of fairness, accuracy, and impartiality. Responsibility for editorial decisions rests with Peter W Lewis General Manager/Editor.

## KIMBO'S Fashions

MIDLAND & WILLETTON

FIND THE PERFECT OUTFIT

CHRISTMAS GIFT VOUCHERS AVAILABLE

MIDLAND  
9274 0429 | 1 Old Great Northern Hwy | OPEN 6 DAYS

WILLETTON  
9259 1698 | Unit 2 / 11 Augusta Street | OPEN 6 DAYS

Like us on Facebook

### Salvos Christmas Appeal

Dear Echo News,

It truly is beginning to look a lot like Christmas.

Shops are brimming with festive products, the airwaves are beginning to hum with Christmas tunes and families are putting up their Christmas trees across the country.

For the Salvos, it is beginning to look a lot like Christmas too, but for a very different reason.

For us, we are starting to see our busiest time of year come to fruition; we are seeing the need for our services increasing, more and more people calling up for Christmas support, the financial and emotional stresses of the festive period beginning to overwhelm people, and the threat of loneliness and isolation starting to creep into people's lives.

For many, Christmas is a time of joy, relaxation, sharing with family and friends, and hope. But for some, including many of those who The Salvation Army support every day, Christmas is a time of increased pressure, stress and loneliness.

It truly is beginning to look a lot like Christmas.

Shops are brimming with festive products, the airwaves are beginning to hum with Christmas tunes and families are putting up their Christmas trees across the country.

For the Salvos, it is beginning to look a lot like Christmas too, but for a very different reason.

For us, we are starting to see our busiest time of year come to fruition; we are seeing the need for our services increasing, more and more people calling up for Christmas support, the financial and emotional stresses of the festive period beginning to overwhelm people, and the threat of loneliness and isolation starting to creep into people's lives.

For many, Christmas is a time of joy, relaxation, sharing with family and friends, and hope. But for some, including many of those who The Salvation Army support every day, Christmas is a time of increased pressure, stress and loneliness.

## ECHO News

ADDRESS:  
Unit 4/9 The Avenue  
Midland WA 6056

Phone: **9374 6666**

GENERAL MANAGER / EDITOR  
Peter W Lewis 9374 6605  
[peter.lewis@echo-news.com](mailto:peter.lewis@echo-news.com)

ADVERTISING  
[sales@echo-news.com](mailto:sales@echo-news.com)  
Karon McCracken 9374 6610  
Reed Lewis 9374 6600

EDITORIAL  
[editorial@echo-news.com](mailto:editorial@echo-news.com)  
Anita McInnes 9374 6603  
Guanhao Cheng 9374 6602  
Jacki Elezovich 9374 6601

PRODUCTION  
[production@echo-news.com](mailto:production@echo-news.com)  
Jeanene Allen 9374 6613  
Liz Rowlands 9374 6613  
Thomas Brady 9374 6613

ACCOUNTS  
[accounts@echo-news.com](mailto:accounts@echo-news.com)  
Caprice Harries 9374 6604

OFFICE HOURS:  
Monday-Thursday:  
9.00am – 5pm  
Closed Friday  
Closed: Weekends & Public Holidays



# Swan votes against Guildford childcare

GUANHAO CHENG

**CITY of Swan voted against the officer's recommendation to advise approval of a childcare development proposal that's been lodged directly with the Metro Outer Joint Development Assessment Panel.**

Although the final decision is yet to be determined by the Development Assessment Panel (DAP), Swan councillors have advised against the childcare proposal.

Deputy mayor and Midland Guildford ward councillor Ian Johnson put forward a motion for council to advise the DAP that it does not endorse the officer recommendation to approve the development application.

"The reason for the motion is the development application proposes to remove one mature flooded gum tree which is an endemic species in the locality and also to remove a bottle tree" he said.

"This removal of trees is not aligned with the Guildford heritage area planning policy.

Cr Johnson said the traffic study done in the area also dates from 2017 which was before the increase in traffic on Swan Street East and Fauntleroy Street.

He said this was a result of the nearby St Jude's aged care expanding and the East Guildford train station being used more.

"Perth Airport has (also) objected to the development application as the childcare centre is within the flight path and the type of activities in the childcare centre are arguably unacceptable under state

planning policy 5.1," he said.

*Echo News* paid a visit to Fauntleroy Street on Wednesday to meet with members of the Guildford Association and see the fenced off lot where the childcare development was proposed.

Guildford Association president Claire Scanlan, vice president Deanna Rokich, members Jude Smyth, Alison Polich and others gathered in the morning to comment on the undeveloped lot.

*Guildford childcare proposal raises tree removal concerns* (*Echo News*, November 8) reported the community concerns regarding the required removal of mature gums on the property as part of the childcare's development.

In the span of 20 minutes, two aeroplanes flew over the proposed childcare site.

"That's the Guildford pause," Ms Rokich said.

"When a plane flies past, you have to pause the conversation until the noise passes over.

"How does anyone think this is an appropriate place to build a childcare with the amount of noise they'll be exposed to?"

Ms Rokich also cited the traffic as another concern for residents along the street.

"Fauntleroy Street is so narrow, locals turning out of it will go on the curb to allow others space to go the opposite direction as they enter," she said.

"And the visibility on that turn into Fauntleroy is so bad, sometimes I need to quickly get out of my car to look for traffic before running back and rushing across.



Guildford Association members gathered on Wednesday morning to share their concerns about the proposed childcare development. Picture: Guanhao Cheng

"This street is usually much busier with this entire road full of parked cars — you've come during the school holiday season."

Prior to the decision, the matters were brought to the City of Swan at their most recent agenda forum meeting.

Ms Scanlan said the 67-place

childcare facility would see mature trees removed and be a devastating loss and change the Fauntleroy streetscape forever.

"Prior to this approval a previous application for childcare premises on this site was refused unanimously by this council owing to a five-bay parking shortfall," she

said.

"There's still a parking shortfall of two bays and the traffic and congestion have only worsened.

"This suggests that the City of Swan's heritage policy for Guildford is not at all taken seriously.

"Is this lack of respect to be rewarded?"



Prime Minister Anthony Albanese and Premier Roger Cook on the new Ellenbrook line.

## Ellenbrook line celebrations

**RESIDENTS in Perth's north-east are finally connected to affordable, world-class public transport, with the official opening of the Metronet Ellenbrook line earlier this week.**

Ellenbrook has been one of Perth's fastest growing areas. The annual population growth rate has exceeded six per cent, making it an attractive place to live, work and study for the now 50,000 local residents.

Delivered by the WA Labor government with funding support from the Federal Albanese Labor government, the new line will connect tens of thousands of people in Perth's growing north-eastern suburbs to the rail network for the first time.

The 21-kilometre line includes five new stations at Morley, Noranda, Ballajura, Whiteman Park and Ellenbrook, and will tie in with the new Bayswater Station that opened earlier this year.

Each station has modern facilities with a total of 3300 parking bays and 335 bicycle storage racks, with trains to operate every 12 minutes at peak times and every 15 minutes outside of this.

The journey from Ellenbrook to the city will take only 30 minutes — less than half the time it currently takes on public transport.

Travel to and from Ellenbrook will be free on Sundays for everyone and free for students travelling to and from school.

Generally, it will cost as little as \$4.68 on the state government's two-zone fare cap, delivering

affordable transport while stimulating local employment, education and tourism opportunities.

The north-east of the city will also see a significant improvement in bus services to support the new line, with around 100 new buses being brought into service, adding around five million bus service kilometres every year.

Construction has supported approximately 6,500 jobs, including 332 apprentices, 140 graduates and 290 Aboriginal employees.

The state-of-the-art stations will unlock economic development in the local community including commercial and housing opportunities linked to major infrastructure and services.

The construction included a number of major projects and milestones including the demolition and reconstruction of Broun Avenue Bridge, removal of the iconic Bayswater Bridge, tunnelling under Tonkin Highway, delivery of a 900-metre-long viaduct through Bayswater, three new intersections and roads to access stations, two rail pedestrian underpasses, three road pedestrian underpasses, a footbridge over Tonkin Highway to access Ballajura Station and 20 public art pieces across the line.

Prime Minister Anthony Albanese said a well planned and accessible public transport system was a game-changer for local communities, and the Ellenbrook line will make it easier for thousands of residents to travel to and from the CBD.

cont page 17

## ATCO Australia™

### Public Notice Replacement Works



Natural gas pipes in the Bassendean area are nearing the end of their life. As part of our proactive Replacement Program, ATCO Australia will be upgrading the natural gas distribution network in this area. This work will ensure the continued security and reliability of these services for decades to come. For more information please visit our website or scan the QR code.

- There is no charge for this service and there is no requirement for you to be present when the work is undertaken.
- For safety purposes, your gas supply may need to be temporarily turned off for short periods between the hours of 8am-4pm while network upgrades are in progress.
- Traffic management will be in place in order for this work to be completed safely. There will be temporary lane and road closures around this area during these works, local detours will be in place. Please observe signage on site.
- Every effort will be made to minimise disruption and to permanently reinstate affected areas to their previous condition as soon as possible, within 15 working days of completion of works.
- We appreciate the community's understanding while these essential works are undertaken and apologise for any inconvenience.
- ATCO Australia builds, owns and maintains the network of underground pipe infrastructure near your home, which makes it possible for you to connect to natural gas.

Please direct construction enquiries to **13 13 56** (weekdays 7am-6pm) or email [enquiries@atco.com](mailto:enquiries@atco.com)

For more information search for 'replacement projects' at [www.atco.com.au](http://www.atco.com.au)



# Ellenbrook and Aveley students shine at WorldSkills competition

JACKI ELEZOVICH

**STUDENTS** from Aveley and Ellenbrook Secondary Colleges (ESC) have received medals at this year's WorldSkills competition, while ESC was awarded the WA school shield for the second year in a row.

More than a dozen students from the two schools achieved medals in their chosen vocational training fields which included business, tourism and trades.

ESC Year 11 student Brooke won a gold medal for tourism studies and said she was completing her studies in tourism because of the rise of the global tourism sector and her desire to travel.

"Receiving a gold medal for the competition felt rewarding and exciting," she said.

"I am feeling enthusiastic and eager to compete in the national competition in Brisbane next year, I'm mostly excited to meet new people and create new friends."

ESC students Hope and Kashvi won silver and gold medals in business services, respectively.

Hope said she chose to pursue business because of the career flexibility it offered her.

"To receive a medal in my category felt surreal because it really boosted my confi-

dence, made me see my potential and motivated me to keep striving to achieve more in the future," she said.

Kashvi said receiving her medal felt like a recognition of all her hard work and preparation for the competition.

"I feel a great sense of pride and motivation, knowing that I have the chance to represent my skills at a higher level," she said.

"What excites me the most about this event is the opportunity to challenge myself further, showcase my abilities on a national stage and learn from the best in the field."

ESC won the school shield again this year, and the school's VET coordinator Debbie Harris said it was testament to the school's ongoing commitment to its VET students.

"The school shield recognises the school's commitment to excellence in VET and highlights the effectiveness of the coordination, teachers and students involved in the program," she said.

"It strengthens the college's reputation as a school for everyone not only in the local community but broader and recognises that ESC is a leader in VET."

Aveley Secondary College also had several students medal in multiple industry categories.

Aveley's VET coordinator Cheri Mac-



ESC was presented with the school shield along with individual student medals.

Donagh said VET studies were a great opportunity for students to gain hands-on experience and skills in their chosen industry.

"Students gain a nationally recognised qualification through industry relevant training which enables these students to be more competitive when applying for employment and further education and training opportunities," she said.

"As every student learns differently, VET

caters to students who learn in more practical manner providing a great stepping stone into their future careers as well as adding points towards achieving their WACE."

83 VET students were selected for the training squad for WA, including 32 school students.

Students selected for the national team will compete at the WorldSkills national competition in Brisbane next year.



Community Carols provide Midland with Christmas cheer at Ascension Connection.

## Christmas cheer with Ascension Connection Midland

**MUSICAL** duo Pat and Fran Irwin will be bringing Christmas cheer to the Ascension Connection community hub and food relief program in Midland throughout December.

The duo and guest musicians from Midland Community Carols will provide live music entertainment and carol singing on most Fridays throughout December, creating a happy and festive atmosphere for those in need of encouragement and a hand up.

Volunteers and community members gather weekly at the Ascension Church Hall in

Spring Park Road to share life, coffee and cake, a sausage sizzle and food parcels.

Rev Peregrin Campbell-Osgood said the cost-of-living crisis and increased homelessness had seen steady growth in the number of people attending, food parcels shared, the number of volunteers and support from across Perth.

A grant from St John of God Midland Public and Private Hospitals will support the festive cheer and provision of Christmas hampers and gifts for those who might otherwise go without.

The grant will ensure food parcels can continue throughout the holiday period, when it's hardest to be certain of ongoing donations.

Other donors include the Hills Symphony Orchestra, the Sexual Health Quarters, schools and individuals.

"To continue our work, we need donations of non-perishable food such as long-life milk, canned beans, canned vegies, cereal and pasta," Rev Peregrin said.

Ascension Connection operates out of the Ascension Church Hall in Spring Park Road, Midland, every Friday from 10am to noon.



## Summer Savings Event

UP TO

# 50%

off\* all La-Z-Boy

BOXING WEEK SALE!  
LIMITED TIME ONLY



**Demi**  
3 Seater Sofa with  
Corner Chaise  
\*In fabric.

NOW  
**\$2999\***  
~~\$5599~~

OVER  
**45%**  
OFF\*

25% off Sofas & Modulares • 20% off Recliners • 15% off Lift Chairs

**Drew**  
Rocker Recliner  
\*In fabric.

NOW  
**\$999\***  
~~\$1399~~



**Colorado**  
Twin Power Reclining  
2.5 Seater Sofa  
\*In Jersey Ocean leather.

NOW  
**\$3524\***  
~~\$4699~~



**Royal**  
Recliner &  
Footstool  
\*In Essenza leather.

NOW  
**\$1999\***  
~~\$3399~~



UP TO 50% OFF CLEARANCE

IN-STORE ONLY WHILE STOCKS LAST!

LONG LIVE THE Lazy™

LA Z BOY™

www.la-z-boy.com.au

T&C's apply. Participating stores only. Clearance products are while stocks last only - no orders available. Prices & promotions may differ between stores. Please see your nearest La-Z-Boy store for more details or go to la-z-boy.com.au

L A Z BOY™ LIMITED TIME ONLY

147 Great Eastern Highway, Bellevue, WA 6056  
Ph (08) 6460 7927 | E. lzbmidland@gmail.com | www.la-z-boy.com.au  
Open: Monday – Saturday 9am – 5pm. Sunday 11am – 4pm  
\*T&C's apply. Please see in-store for more details or go to la-z-boy.com.au



# Forrestfield trainer keynote on surviving DV trauma

GUANHAO CHENG

**FORRESTFIELD** personal trainer and domestic violence survivor Catherine Eastman shared her story about escaping an abusive relationship and moving on from the trauma during Midland's 2024 March That Matters.

Ms Eastman, who is a dental hygienist and personal trainer in Forrestfield, said her story began in childhood with the behaviours she saw at home.

"It starts with my parents: my dad is one of those Caucasian men that travelled to a poor Asian country to find a wife, so growing up I saw a lot of disrespect in the home but didn't realise that that was what it was," she said.

"I thought my parents loved each other just like I guess all young children do.

"When you're growing up in an environment where there is abuse,

you do normalise it.

"You don't understand what healthy is and you just think that's the way of the world.

"My childhood really shaped me for being just re-victimised over and over again throughout my life and then eight years ago was the final abusive relationship that I was in, and it was bad."

Ms Eastman said her last relationship almost cost her life but was also a reminder of the resilience and capacity for change that exists in the human spirit.

"It was the worst relationship of my life, and it almost killed me multiple times," she said.

"He was a terrifying man who I'll call Brad.

"I'm just telling you this so people can appreciate how terrifying it was to be with someone like that and I found myself in a situation where I didn't know how to escape.

"There was one incident where



Forrestfield personal trainer and dental hygienist Catherine Eastman (right of banner) was at the Midland March that Matters 2024 and spoke about her experience with DV. Picture: Guanhao Cheng

he attempted to drown me in the Swan River but luckily the police attended and pulled us out of the water.

"It was eight years ago but I have slowly been trying to put my-

self back together and I've always loved the ocean but that experience terrified me.

"I was an alcoholic, I couldn't work, I could barely leave the house and it was just terrible but

I thought, 'No, you know what? How about I'll just try for the first time in my life — how about I really try to get over my mental health issues and stop repeating my patterns?' **cont page 17.**



The WA Police band marched with the Swan crowd while playing music to symbolise the noise they wanted to make to break the silence around violence. Picture: Guanhao Cheng

# Midland DV march theme a call to action

GUANHAO CHENG

**THE** Swan family and domestic violence network hosted its 11th annual Midland March That Matters last Thursday with its theme being a call to action for ending violence against women.

The event was held at Midland's Juniper Gardens which was decorated with rows of t-shirts that had messages against domestic violence painted on them.

Along with the t-shirt display, the Indigo Junction women's group Maali Deadly Yorgas led a community art project painting a canvas to symbolise collective heal-

ing and solidarity.

After Noongar Elder Dianne Ryder gave a Welcome to Country, Midland March That Matters committee member Matt Vapor was the first speaker to talk about his experience with domestic violence.

Mr Vapor invited the attendants to close their eyes as he guided them through his childhood encounter with domestic violence.

"I want you to picture a young boy (who's) 10 years old," he said.

"A parent has just tried to take his life.

"I want you to think about how he'd feel (and) what the rest of his time would be

like in that household.

"Now I want you to think of that boy in adulthood.

"What they would look like (and) how that household had impacted them.

"I was that boy (and) it was one of the most horrific times of my life and one of the scariest things that I ever had to do was emerge from my hiding place.

"At the age of 42 now I still have nightmares about the stuff that I went through in childhood.

"Even this morning when my wife touched me to wake up, I screamed out, 'No.'" **cont page 17.**

ADVERTISEMENT



Merry Christmas  
& HAPPY NEW YEAR

**MATT MORAN**  
LIBERAL FOR BULLWINKEL





Modular tiny homes could be a solution to the social housing shortage.

## Social housing tiny homes completed in Northam

**FOUR new modular tiny homes have been completed in Northam as part of the state government's continued reforms to boost social housing across Western Australia.**

These four one-bedroom, one-bathroom homes have been built by Summit Homes and follow the first four tiny homes delivered for social housing in Perth's southern suburbs unveiled in March 2024.

Prefabrication is undertaken over approximately 12 weeks and the design and construction method means faster construction time, less time on site, waste reduction, design adaptability and a small on-site building footprint that allows for more extensive landscaping.

This innovative approach to social housing offers the opportunity for an increased number of single bedroom dwellings, within a shorter timeframe.

All four tiny homes have been allocated to people on the public housing waiting list who will be moving in around mid-to-late December 2024.

Housing Minister John Carey said the government continued to do everything it can to bolster the supply of social housing across Western Australia – including through the record \$3.6 billion investment in housing and homelessness measures.

“Alternative building methods, such as modular construction and tiny homes, has meant a quicker delivery of housing through shorter construction times.

“It's brilliant to see another four new tiny modular buildings completed in Northam and more importantly, these new tiny homes will provide safe, affordable and secure housing to the most vulnerable members of the Northam community.

“Since the Cook Labor Government's record \$3.6b investment in housing and homelessness measures, we've added more than 2550 social homes, with more than 1000 social homes currently under contract or construction throughout Western Australia.”

## North Ellenbrook (West) amendment

**PUBLIC consultation on North Ellenbrook (West) major amendment 1409-41 closes on Friday, December 13.**

Amendment 1409-41 proposes the transfer of about 393ha in North Ellenbrook (West) from rural to urban deferred and parks and recreation reserve for future residential, light industrial and commercial development.

The Western Australian Planning Commission (WAPC) said the amendment was to be processed as a major amendment given the size and scale of the proposal and the establishment of a new urban area was considered a substantial-regional change in the North Ellenbrook-Bullsbrook locality.

In the amendment report the Water Corporation said new water and wastewater headworks would need to be planned and capital funding for major infrastructure assigned through the corporation's capital investment program (CIP) with major headworks infrastructure not presently funded on the corporation's five-year CIP.

The report said the various proponents in North Ellenbrook may have the option to individually or collectively fund any water and wastewater headworks infrastructure to suit their timeframes.

According to the report the Water Corporation has adopted conceptual planning to guide wastewater over the longer term.

“An option is for the proponents to extend a large gravity sewer from the Barrambie Way main waste water pump station (WWPS) northwards alongside Drumpellier Drive to a topographical high point to achieve a discharge point around 60m AHD,” the report said.

“This main gravity sewer is not funded on the Corporation's CIP, and it would be efficient to install this sewer in stages as part of the future subdivision and development.”

The most likely source of drinking water is from the Corporation's Ellenbrook storage tank approximately 4-5km to the west.

“Water infrastructure planning will need to examine how the development can be serviced and to determine the likely route and funding of future water distribution mains.”

The WAPC noted the Water Corporation's requirements have been included as matters to be addressed prior to the lifting of urban deferment.

# Community Christmas Carols

## Swan View Community Carols - Friday 13 December

6.30pm to 8.30pm  
Brown Park Oval

## Carols in the Hills - Friday 20 December

5.30pm to 8pm  
Sculpture Park

## Mt Helena Carols in the Park - Saturday 21 December

5pm to 9pm  
Pioneer Park

## Glen Forrest Christmas Carols - Monday 23 December

6pm to 9pm  
Burkinshaw Oval

## Darlington Carols - Tuesday 24 December

6.30pm to 8.30pm  
Darlington Hall lawn area





# Leschenaultia open longer

SHIRE of Mundaring has announced measures that will now allow summer visitors to enjoy Lake Leschenaultia more often during the fire season.

The shire has revised closure protocols and enhanced bushfire mitigation effort, so visitors can spend more time at the popular summer destination, while ensuring safety remains a top priority.

The introduction of the Australian fire danger rating system (AFDRS) prompted a review of Lake Leschenaultia's closure protocols, which had caused more frequent closures, even in milder conditions.

Shire chief executive officer Jason Whiteaker commissioned an independent risk assessment, resulting in a balanced plan for increased access while maintaining safety.

Aligned with measures used by national parks and schools, the updated protocols were informed by the risk assessment, legislative guidelines and technology, developed in consultation with the shire's bush fire advisory committee and approved by council.

The shire, in partnership with DFES and local bush fire brigade volunteers, conducted hazard reduction burns over 160ha and upgraded firebreaks, significantly lowering fuel loads. Ongoing maintenance and planned burns will keep the area safe while preserving its natural beauty.

Shire President Paige McNeil emphasised both the communi-

ty's role in maintaining safety and the significant efforts that have made these changes possible:

"Lake Leschenaultia is in a bushfire-prone area, and while we've done a lot to reduce risks, it's important for visitors to stay alert and follow instructions," she said.

"Being prepared can save lives, and everyone has a part to play in ensuring safety.

"These changes have taken a lot of hard work and teamwork, including bushfire mitigation efforts and careful risk assessments.

"I want to thank everyone who's helped make Lake Leschenaultia a safe and welcoming place for our community to enjoy."

Information about emergency procedures will be readily available at the lake.

Visitors are encouraged to familiarise themselves with these protocols before their visit.

Further information is available on the shire's website or by contacting the fire protection team on (08) 9290 6666.



Greenmount resident Colin Hughes continues his fight to reduce the speed limit on Great Eastern Highway.

# Call for signs in Greenmount continues

GUANHAO CHENG

**AFTER another crash on Great Eastern Highway, Greenmount resident and former East Metropolitan Health Service head Colin Hughes asked what the Mundaring council was doing to address the issue.**

The crash occurred at the intersection of Great Eastern Highway and Brooking Road in Parkerville as reported in *Parkerville fatal crash investigation* (*Echo News*, December 6).

Shire of Mundaring President Paige McNeil said the council had identified Seaborne Street and Scott Street in their advocacy priorities and noted that Great Eastern Highway was under the control of Main Roads.

"So, our role here is an advocacy one," she said.

"I have been advocating to all the candidates in the (upcoming) election.

"I've also written to the Road Safety Minister and provided you a copy of that letter and Main Roads is currently working with the Shire of Mundaring."

Mundaring infrastructure services director Shane Purdy said the shire staff had several meetings with Main Roads and the City of Swan looking at potential short-term and long-term options for the Scott Street intersection.

"As a consequence of those earlier meetings, to get a better understanding of the traffic movements, they did organise some traffic survey cameras that were put up and down at various intersections on Greenmount Hill," Mr

Purdy said.

"The advice that I've had is that they're also progressing various concept options to improve the intersection there and they're in a position to present them back to us in late January (or) early February."

Mr Hughes also asked if the shire would meet with Main Roads, ministers and their representatives to discuss the lowering of speeds along Great Eastern Highway, as reported in *Four signs for road safety* (*Echo News*, November 15).

Shire of Mundaring chief executive officer Jason Whiteaker said that speed was an issue council had raised with Main Roads on multiple occasions.

"Ultimately that decision rests with Main Roads," he said.

"As the shire president alluded to previously, we'll certainly continue that advocacy on behalf of the community."

In response to questions from *Echo News*, a Main Roads spokesperson said several requests to Main Roads to review speed limits along Great Eastern Highway, had prompted a thorough review to be undertaken.

"The review aims to ensure that all speed limits are appropriate and consistent, reflecting changes in the level and type of roadside development that have occurred in recent years," they said.

"It is anticipated that the review will be finalised during the first quarter of 2025, after which, any necessary adjustments to speed limits will be implemented."

# the EXPRESS SERIES

EIGHT DESIGNS FROM \$405,200

Arrive at your *Dream* home with our fast-tracked Express Series

### Packed with quality inclusions

- Vitrum surface benchtops to the kitchen, ensuite and bathroom
- Semi-frameless and hobless showers
- Over 2.4m high ceilings to garage
- Lifetime structural guarantee

### Free BONUS extras

- Reverse cycle ducted air-conditioning
- 31c ceilings to living, dining, kitchen\*, entry and entry passage
- 20 LED lighting package
- Vitrum surface benchtops to laundry



the *Outback*

For more information call 6141 9125 or go to [wacountrybuilders.com.au/express](http://wacountrybuilders.com.au/express)







# TREE AESTHETICS

## PERTH HILLS NEWEST SOIL CENTRE

Sand • Soils • Gravels • Mulches • Firewood



**CLOSED FROM  
19<sup>TH</sup> DECEMBER  
2024 UNTIL  
13<sup>TH</sup> JANUARY  
2025**

- Pick-up or delivery options available
- Competitive prices
- Wholesale prices on selected products
- Still Perth Hills preferred Tree Service company

**Call us now**  
**9454 8640 or 9250 6599**

**Lot 10 Talbot Road HAZELMERE**  
(ENTRY OFF MIDLAND ROAD)

office@treesaesthetics.com.au www.treesaesthetics.com.au

## Grant for heritage veranda



**Labor candidate for Midland Stephen Catania Tracy Weber, Midland MLA Michelle Roberts and Mark Weber outside the Rose & Crown hotel in Guildford.**

**THE owners of the Rose & Crown will be the recipient of a state heritage grant to help remove and replace the hotel's veranda.**

The \$100,000 grant from the major conservation category will go towards a project worth about \$500,000, which includes the use of salvaged and re-used timber where possible or new like-for-like materials.

It also includes the installation of new timber decking for the veranda floor.

The hotel was built in Guildford in 1841 by Thomas Jecks who moved there in 1839 to open a general store.

According to inHerit the place with its surviving hotel buildings, including the cellars containing the well and the stables at the rear, demonstrate a way of life no longer practised.

Midland MLA Michelle Roberts welcomed the grant for the project saying it would help with significant restorative works that the owners Mark and Tracy Weber were doing at the hotel.

"The Rose and Crown is an important part of Guildford's heritage," she said.

"I was delighted when we were able to formally heritage list Guildford by placing it on the state register of heritage places, back in 2019."

Heritage Minister David Templeman said the 2024-25 heritage grants program would deliver more than \$3.47 million in conservation works and projects across Western Australia.

The inherit listing said the two-storey building was colonial-Georgian with original detail intact.

"The cellars are below ground-level, underneath the 1860s section of the Rose & Crown Hotel," the listing said.

"They were probably built for storage of beer and wine, and other provisions for the hotel.

"The external and internal walls are of brick, the thick internal walls having round-arched doorways to allow access from one part of the cellars to another."

"There is a well set into the floor of one section, the water of which was reputedly used for beer making when the hotel did its own brewing in the 19th century."

## Henderson eyes Swan Hills

**ANITA McINNES**

**ROD Henderson, who is running for the seat of Swan Hills in the next state election, says it is an advantage that the incumbent Jessica Shaw is retiring but he still sees himself as the underdog.**

A City of Swan councillor, Mr Henderson lost to Ms Shaw in the 2021 election and also unsuccessfully contested the seat of West Swan in 2017.

But he told *Echo News* he had decided to run again in what he said was a bellwether seat.

"I'm quite well known in the Swan Hills district – that's an advantage, Jessica Shaw has decided to retire – that's another plus and I can just see at the moment there's a swing going on towards the Liberal Party," he said.

"It's one of those flip-flop seats – Frank Alban had it for two terms, Jess had it for two terms – it might be it comes to the Liberals again for two terms.

"Certainly the Liberal Party is going to see a swing back to it there's no doubt about that."

The seat has undergone some redistribution to accommodate the high population growth in the neighbouring seat of West Swan, which involved transferring part of Ellenbrook from Swan Hills to West Swan with the more highly populated localities of Aveley and Belhus shifting to Swan Hills.

To maintain an elector population in Swan Hills that is at the lower end of the permitted range, the electoral commissioners also transferred a significant area of the Shire of Mundaring from the district of Swan Hills to the district of Kalamunda.

After the WA electoral redistribution was released ABC election analyst chief Antony Green said in 2021 Labor won 53 seats, the Liberals two and The Nationals three.

"On the old boundaries the Liberals and Nationals needed a uniform swing of 23.4 per cent to gain



**Swan councillor Rod Henderson is the Liberal candidate for Swan Hills.**

the 24 seats needed for government," he said.

"The new boundaries do little to alter the swing needed."

Mr Henderson said the Liberals had good candidates out there for this election.

"Certainly if you look at the policy that we're just starting to release now people can start to see what we're about and what our candidates are (about)," he said.

When asked if any policy released to date was of particular interest to Swan Hills residents he said it was a broad spectrum.

"There's some very obvious ones and that is the cost of living pressures (are) massive so we'll be looking at measures to deal with cost of living pressures.

"But the other big one is the fact that our hospitals are struggling, ambulance ramping has been absolutely off the planet and of course the police are literally 800 understaffed."

While very positive he agreed it was going to be difficult for him to win Swan Hills.

"I'm not saying that I have a margin that I'm going to win on.

"I'm saying I'm definitely the underdog so that in itself is the uphill battle for me."

Just days before the Ellenbrook line opened he said Metronet was \$10 billion over budget, which was going to hurt the state's bottom line big time.

"So for my purpose with only 10 per cent of the population using rail we've got to say 'Okay what are the key things that make our road networks work so infrastructure like bridges and overpasses and all that kind of thing'.

"Infrastructure is the one single thing that I believe has been neglected if you look at water works, sewerage works, all the electrical installations to be able to service urban development they are way behind the eight-ball and that's something that needs to be fixed up or otherwise we won't be able to build those houses."

### Schedule of Agenda Briefing Forums and Council Meetings – 2025

- Venue: Council Chambers, City of Kalamunda Administration Building, 12 Railway Road, Kalamunda
- Ordinary Council Meetings commence at 6:30pm
- Public Agenda Briefings commence at 6:30pm

	Public Agenda Briefing Forum	Ordinary Council Meeting
February 2025	Tuesday 11 February	Tuesday 25 February
March 2025	Tuesday 11 March	Tuesday 25 March
April 2025	Tuesday 8 April	Tuesday 22 April
May 2025	Tuesday 13 May	Tuesday 27 May
June 2025	Tuesday 10 June	Tuesday 24 June
July 2025	Tuesday 8 July	Tuesday 22 July
August 2025	Tuesday 12 August	Tuesday 26 August
September 2025	Tuesday 9 September	Tuesday 23 September
October 2025	Tuesday 7 October	Tuesday 14 October
November 2025	Tuesday 11 November	Tuesday 25 November
December 2025	Tuesday 2 December	Tuesday 9 December

Stay in touch with the City of Kalamunda:

**Online:** engage.kalamunda.wa.gov.au

**Email:** enquiries@kalamunda.wa.gov.au

**Post:** PO Box 42 Kalamunda WA 6926

**In person:** 2 Railway Road, Kalamunda



kalamunda.wa.gov.au



# Christmas Celebrations

Spoil a loved one with a gift from Carmen Jewellers



Ellenbrook Christmas celebrations  
Saturday December 14



CATCH THE ELFENBROOK EXPRESS TO ELFENBROOK!

**LIGHT UP THE SKY!**

## CHRISTMAS IN ELFENBROOK

**SATURDAY**  
**14 DECEMBER | 2-8PM**  
**MAIN STREET ELLENBROOK**

**5PM KINGDOM CITY CHRISTMAS SHOW**  
**6PM PAGEANT**  
**7PM HILLS SYMPHONY ORCHESTRA**  
**8PM FIREWORKS**

**NOTICE: FIREWORKS 8PM ELLENBROOK**  
admin@ellenbrookcollective.com.au

Markets and Community Stalls  
Arts and Culture • Conservation Corner  
Environment and Sustainability  
Youth Zone • Live Entertainment  
Rides • Attractions • Workshops  
Waterslides • Displays • And More!

Find us on Facebook for event updates, maps, parking, road closures and more!



# MERRY Christmas



## 50% OFF SELECT ITEMS

SPEND OVER

\$400 GET 10% OFF  
\$900 GET 15% OFF  
\$1500 GET 20% OFF

Terms & Conditions Apply

LAKESIDE JOONDALUP  
JOONDALUP@CARMENJEWELLERS.COM  
08 6556 0972

MIDLAND GATE  
MIDLAND@CARMENJEWELLERS.COM  
08 9274 1080

MIRRABOOKA SQUARE  
MIRRABOOKA@CARMENJEWELLERS.COM  
08 9349 7861

KARRINYUP S/C  
KARRINYUP@PINNACLEJEWELLERS.COM  
08 9466 2699



# Give the gift of pure Relaxation this Christmas at Amaroo Retreat & Spa



Surprise your loved ones with a Christmas Gift Voucher from Amaroo Retreat and help create unforgettable memories at our secluded oasis in the Perth Hills.

Enjoy a luxurious escape that includes five star chalets nestled in nature, exquisite dining at the Lounge Restaurant, and blissful treatments at our indulgent day spa or Kapurn: Skin.

Our exclusive Under the Stars Degustation Dinners combine gourmet cuisine, fine wine, and the magic of the night sky for an evening you'll never forget.

Or, for something truly intimate, book a private picnic experience, perfect for creating cherished memories together.

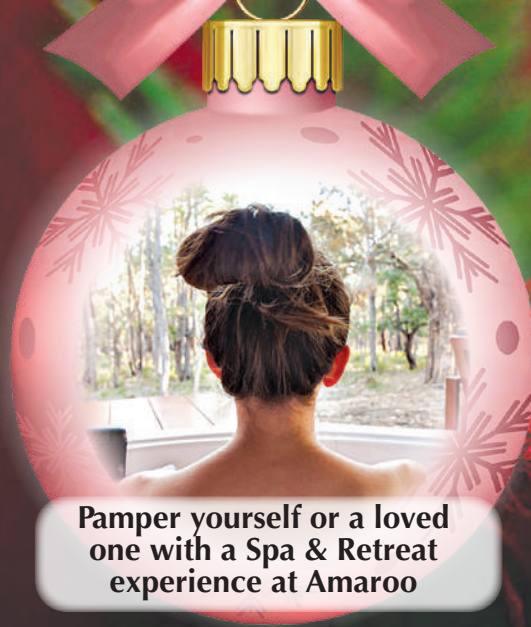
Join us for an enchanting celebration at Amaroo - where festive memories are made!

Book today and let us exceed your expectations:

reservations@amaroo retreat.com.au  
08 6244 4800  
www.amaroo retreat.com.au



# Christmas



Pamper yourself or a loved one with a Spa & Retreat experience at Amaroo



Get the perfect gift from Hawleys Kalamunda



What do you call a well-balanced horse?  
Stable

## Celebrate Christmas with



# Hawleys

SHOES AND MENSWEAR



Gift Vouchers available





# Celebrations



Christmas seafood specials @ Hills Seafood



Cool off at the pool this summer with Skids Swimwear

## SKIDS SWIMWEAR

CHLORINE RESISTANT • UPF 50+  
ALL the Family • ALL Year Round

### FOR THE ADULTS

- Swimwear for ladies & men right through to 7XL
- Famous Lycra brands
- Hats, towels and bags etc
- Ladies' leisurewear

SUN PROTECTION FOR ALL THE FAMILY

**HEAPS OF GREAT CHRISTMAS GIFT ideas**  
- including GIFT VOUCHERS

- ### KIDS STUFF
- Rashies & bathers (inc plain black, navy)
  - Goggles and accessories
  - Sunnies and hats

**NEW FUNKYS ARE HERE!!**  
Ask for FREE gift



ALL THE FAMILY

GOWNS FROM SPEEDO, MOOMOO KIDS, BACK BEACH & RAPPCO



HATS, BAGS & TOWELS

MADE IN PERTH

BAMBOO PANTS & TOPS

SUMMER LEISURE



PERIOD 1PCE + BRIEFS

ONE PIECES & SEPARATES

LEG SUITS

161 HIGH RD, WILLETTON  
9354 4124  
MON- FRI 10-4 | SAT 9-1

**CHRISTMAS TRADING**  
CLOSED WED 25<sup>TH</sup>, THURS 26<sup>TH</sup> 2024  
NORMAL TRADING 27<sup>TH</sup> - 31<sup>ST</sup> 2024  
CLOSED WED 1<sup>ST</sup> 2025



## HILLSEAFOOD PROUDLY W.A.

Family owned and Operated Since 1987.  
**QUALITY YOU CAN TRUST.**

Phone 9295 0066 or Email [orders@hillseafoods.com.au](mailto:orders@hillseafoods.com.au)

**Taking Orders for Christmas NOW!**

LARGEST RANGE | FRESHEST QUALITY | FRESH FISH SEAFOOD IN THE HILLS

<p><b>NEW FRESH SMOKED + ARTISAN PRODUCTS DAILY</b> Smoked Whole Rainbow Trout Premium Smoked Salmon AUST Seafood Marinara Wood Roasted Fish WA Sardine fillets Beetroot Cured Trout</p>	<p>SA Plump Fresh <b>BLACK MUSSELS DAILY</b> \$8.95/kg <b>HURRY WHILE STOCKS LAST</b></p>	<p>Huon Fresh Atlantic Salmon Fillets Skin On <b>Premium Sashimi Grade</b></p>	<p>Premium Fresh Smoked Tasmanian Salmon Slides available 100g \$9.95 200g \$14.95 1Kg \$69.95/kg</p>	<p><b>We thank you for your loyal support and caring!</b></p>	
<p><b>NEW SEASON WHOLE RAW AUSTRALIAN KING PRAWNS</b> \$28.95/kg <b>CARTONS LOTS (5kg) AND COOKED ONLY \$2.00/kg MORE!!</b></p>	<p><b>WA GRASS FED BEEF</b> Small Scotch \$28.95/kg Skirt Steak \$17.95/kg <b>BULK SAVINGS ON ALL CUTS!</b></p>	<p>Ready to go <b>Salt &amp; Pepper Squid</b> \$23.95/kg</p>	<p>Fresh Juicy Exmouth Goldband Snapper Whole \$22.85/kg</p>	<p><b>LAST OF THE SEASON SHARKBAY FROZEN RAW KING PRAWN CUTLETS</b> \$49.95/kg</p>	
<p><b>Humpty Doo Barramundi medium Whole</b> \$18.95/kg</p>	<p><b>NZ HOKIE FILLETS FROZEN</b> 6.8KG CARTON \$14.95/kg <b>CARTON BUYS</b></p>	<p><b>Sweet Premium Cooked Prawn Cutlets IQF</b> were \$29.95/kg <b>NOW \$26.95/kg</b></p>	<p><b>Tender Southern Cleaned Squid Tubes</b> \$22.95/kg</p>	<p><b>Frozen XL Sharbay Crab Raw &amp; Cooked</b> \$23.95/kg</p>	
<p><b>NEW SEASON WA Cooked Crayfish PRICES DOWN!</b></p>		<p>☆☆☆ <b>Ready to cook meal options and Recipe ideas instore</b> ☆☆☆</p> <p><b>SNACK &amp; COCKTAIL FOODS AND FRESH MEATS ALSO CATERED FOR. COME AND SEE OUR FACTORY DIRECT INSTORE SPECIALS</b></p>		<p><b>CHRISTMAS HOURS</b> FRI 20<sup>th</sup> DEC 8am-5.30pm SAT 21<sup>st</sup> 8am-2pm SUN 22<sup>nd</sup> 8am-2pm MON 23<sup>rd</sup> 8am-5.30pm TUES 24<sup>th</sup> 6am-5pm WED CHRISTMAS DAY CLOSED</p> <p><b>THURS BOXING DAY CLOSED</b> FRI 27<sup>th</sup> DEC 8am-5.30pm SAT 28<sup>th</sup> 8am-2pm SUN 29<sup>th</sup> CLOSED MON 30<sup>th</sup> 8am-5.30pm TUES 31<sup>st</sup> 8am-5.30pm WED NEW YEARS DAY CLOSED</p> <p><b>HILLSEAFOOD</b> 4 Wandeara Cr Mundaring 08 9295 0066 Open Mon-Fri 8am to 5.30pm and Saturdays 8am-2pm</p>	
<p><b>FACTORY SPECIAL</b> ALL Carton lots of local whole raw and cooked prawns receive a 10% Discount 3kg and 5kg sizes.</p>					





**Sacred Heart Church**  
Coolgardie St, Mundaring & Wilcox St, Chidlow

**CHRISTMAS SERVICES**

**24th December – 6pm, Mundaring**  
*Christmas Eve Vigil Mass*  
*(Sacred Heart School Grounds)*

**25th December – 9.30am, Mundaring**  
*Christmas Day Mass*

**25th December – 7.30am, Chidlow**  
*Christmas Day Mass*  
**All welcome**

**Christmas Masses**  
**Gingin / Chittering**

**Christmas Vigil Masses**  
**5pm** St Catherine's, Fraser St, Gingin  
**7pm** Divine Mercy Shrine, 34 Santa Gertrudis Drive, Lower Chittering

**Christmas Day**  
**7.30am** St Anne's, 6549 Great Northern Highway, Bindoon  
**9.30am** Divine Mercy Shrine, 34 Santa Gertrudis Drive, Lower Chittering  
*Confession and Carols before Mass in each centre.*  
Phone 9571 8068  
www.divinemercyshrine.com.au

**UNITING CHURCH**


Kalamunda  Forrestfield

Welcome to our  
*Christmas Services*

Blue Christmas 7.30pm - Kalamunda  
Christmas Eve 7pm - Kalamunda  
Christmas Day  
8am - St Martin's  
10am - Kalamunda

<b>St Martin's</b> <b>Foothills</b> 57-59 Hale Rd Forrestfield		<b>Kalamunda</b> Cnr Heath Rd & Brooks St Kalamunda
---	---	--

Minister: Rev Sophia Lizares



# Church Notices

## 2024



**Welcome to Evangel Church**  
**Christmas Services**  
6 Padbury Terrace, Midland.  
Phone 0422 994 439.

**Sunday December 22nd – 10 am**  
**Christmas Day – 9.30 am**

**17** For God sent not his Son into the world to condemn the world but that the world through Him might be saved. John. 3: 17




The Angel's announcement to the shepherds was preceded with the words "good tidings of great joy, which shall be to all people".

What made this news so great? What were the "good tidings of great joy"? It was the announcement of God's greatest gift, the promised Messiah – the One who would give His life "a ransom for many".

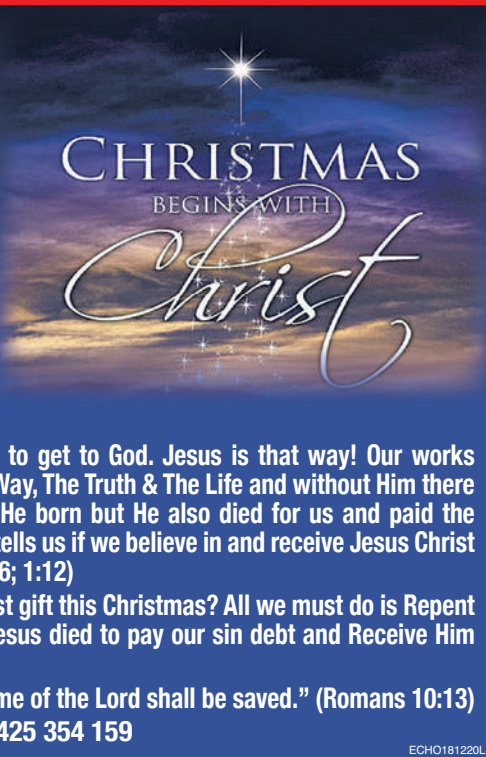
This Baby Boy would live a sinless life and die for sinful man. This Baby Boy would love all men but be hated by those He came to save.

As sinners we need a Saviour, a way to get to God. Jesus is that way! Our works cannot get us to heaven. Jesus is The Way, The Truth & The Life and without Him there is no hope for eternity. Not only was He born but He also died for us and paid the penalty for our sins – Death. The Bible tells us if we believe in and receive Jesus Christ we will have Everlasting Life (John 3:16; 1:12)

Would you like to receive God's greatest gift this Christmas? All we must do is Repent (admit we are sinners), Believe that Jesus died to pay our sin debt and Receive Him as your Lord and Saviour.

"For whosoever shall call upon the name of the Lord shall be saved." (Romans 10:13)

Grace Baptist Church Midland 0425 354 159




**ANGLICAN PARISH OF MUNDARING**  
welcomes you to share the meaning of  
**Christmas**



**Service Times**  
**Church of the Epiphany**  
Mann Street Mundaring

**Sunday 15<sup>th</sup> December** Carols by Candlelight 6.00pm  
**Sunday 22<sup>nd</sup> December** Holy Communion 9.30am  
**Tuesday 24<sup>th</sup> December** Midnight Mass 11.30pm  
**Wednesday 25<sup>th</sup> December** Holy Communion 9.30am

**Church of St Francis**  
Werribee Road, Wooroloo

**Saturday 21<sup>st</sup> December** Carols by Candlelight 6.00pm  
**Sunday 22<sup>nd</sup> December** Holy Communion 11.00am

www.mundaringanglicanparish.com





# Additional Bin Collections over the holidays

For this year Council has arranged for an extra General Waste collection for all properties over Christmas/New Year (to assist with the introduction of FOGO). Additional Recycling collection over Christmas/New Year as in previous years will also continue.

As no collection occurs on Christmas Day or New Year's Day Public Holidays, the following changes will occur:

My collection day should be	All 3-bins will be collected on
Wednesday 25 December 2024	Thursday 26 December 2024
Thursday 26 December 2024	Friday 27 December 2024
Friday 27 December 2024	Saturday 28 December 2024
Wednesday 1 January 2025	Thursday 2 January 2025
Thursday 2 January 2025	Friday 3 January 2025
Friday 3 January 2025	Saturday 4 January 2025

View other city opening hours by visiting [kalamunda.wa.gov.au](http://kalamunda.wa.gov.au) or scan the QR code







# Are you seeking **premium care** for yourself or a loved one?

Experience the **gold** standard in care at Carmel Roshana Care

BOOK YOUR TOUR NOW

CALL

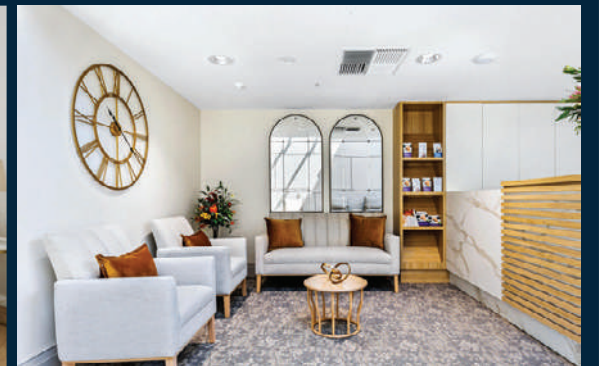
(08) 6390 0700

**Our services include:**

- Residential Aged Care
- Palliative Care
- Non-Dedicated Respite
- 24/7 First Response Care

**Explore premium amenities and services such as:**

- Luxurious Cinema
- Hair Salon
- Serene Wellness Garden
- Personalised Meal Plans



Located in the peaceful, leafy embrace of Perth Hills, Roshana Carmel Aged Care provides a serene haven in the **heart of the Carmel community.**



Roshana Care is a leading provider of Aged Care, Home Care, Mental Health Care, NDIS, and Retirement Living in Australia, with over 13 age care facilities spanning across WA, NSW, QLD, and VIC, and over twenty years of combined experience in healthcare.

At Roshana, **it's your life, your way, and that's our promise everyday.**

[www.roshana.com.au](http://www.roshana.com.au)





# Festive Season Operational Hours

	Wed 25 Dec	Thurs 26 Dec	Fri 27 Dec	Sat 28 Dec	Sun 29 Dec	Mon 30 Dec	Tues 31 Dec	Wed 1 Jan	Note
Shire Administration Building and Operations	Closed	Closed	Closed	Closed	Closed	Closed	Closed	Closed	
Bilgoman Aquatic Centre	Closed	7am to 7pm	5.30am to 8pm	7am to 7pm	7am to 7pm	5.30am to 8pm	5.30am to 6pm	7am to 7pm	
Boya and Mundaring Libraries	Closed	Closed	Closed	Closed	Closed	Closed	Closed	Closed	
Lake Leschenaultia - Gates open	8.30am	8.30am	8.30am	8am	8am	8.30am	8.30am	8.30am	
Lake Leschenaultia - Gates close	30 minutes after sunset								
Mundaring Community Recycling Centre Coppin Rd	Closed	Closed	Closed	8am to 4pm	8am to 4pm	8am to 4pm	8am to 4pm	Closed	
Containers for Change Refund Point Coppin Rd	Closed	Closed	12.30pm to 4.30pm	8.30am to 3.30pm	8.30am to 3.30pm	8.30am to 3.30pm	8.30am to 3.30pm	Closed	
Mathieson Road Community Recycling Centre	Closed	Closed	8am to 4pm	8am to 4pm	8am to 4pm	Closed	Closed	Closed	
Mt Helena Aquatic Centre	Closed	12pm to 6pm	12pm to 6pm	12pm to 6pm	12pm to 6pm	12pm to 6pm	12pm to 6pm	12pm to 6pm	
Mundaring Arena	Closed	Closed	Closed	Closed	Closed	Open	Closed	Closed	Closed 2 to 5 Jan. Reopens 6 Jan
Perth Hills Mundaring Visitor Centre	Closed	Closed	9.30am to 4pm	9.30am to 4pm	10am to 2.30pm	9.30am to 4pm	9.30am to 4pm	Closed	
The Hub of the Hills	Closed	Closed	Closed	Closed	Closed	Closed	Closed	Closed	

If your normal bin day is	Place your bin out on
Wednesday 25 December 2024	Thursday 26 Dec 2024
Thursday 26 December 2024	Friday 27 December 2024
Friday 27 December 2024	Saturday 28 December 2024
Wednesday 1 January 2025	Thursday 2 January 2025
Thursday 2 January 2025	Friday 3 January 2025
Friday 3 January 2025	Saturday 4 January 2025



The Shire President, Council Members and Staff wish our community a happy and safe festive season and a prosperous 2025.



# ECHO Trades & Services

**9374 6666**  
 classifieds@echo-news.com  
 BOOK ONLINE: www.echonepaper.com.au

## Airconditioning & Refrigeration

**ACR**  
 Lic. No. AU05609  
 • Local Company  
 • Local Prices  
 • Reliable & Efficient  
 • Pensioner Discounts  
 For all your airconditioning & refrigeration service & installation  
**9454 9945**

## Bobcats

**MIDLAND BOBCAT HIRE**  
 BOBCATS, 8 & 12 TON TIPPERS, MINI EXCAVATORS  
 Free no obligation quotes and advice  
**Russell & Lynn Edwards**  
 Owner/Operator  
**Russell: 0417 957 597**  
 russlynn4@bigpond.com

## Brickpaving

**BRICKPAVING**  
 - Big or Small Jobs  
 - Repairs Retaining Walls  
 - Quality Workmanship  
 - All Work Guaranteed  
 Ph Ian **0412 771 624**

## Carpentry

**MORGAN CARPENTRY & MAINTENANCE SERVICES**  
 ALL ASPECTS OF CARPENTRY & MAINTENANCE WORK  
 • 15yrs commercial & residential experience • Insured  
 • Fully qualified, professional & reliable • No call out fee  
 • Full police clearance • Pensioners discount  
 Call Kevin **0450 538 596**  
 www.morgancarpentry.com.au e: kdd.morgan@hotmail.com

## CARPENTER/CABINET MAKER

Sash Window Repairs / Renovations, Kitchens, Laundries, Robes & Vanities made and fitted. Doors, Frames & Architraves. Skirting & Shelving. 40 years experience. **NO JOB TOO SMALL. Call Terry 0401 743 027 / 9295 0797** telcocarpenry@bigpond.com

## Ceilings

**CEILING & WALL RESTORATION**  
 ALL SMALL JOBS  
 ALL REPAIRS & NEW ADDITIONS  
**23 YEARS EXPERIENCE**  
**9295 2041 OR 0402 270 688**

## CA INSTALLATIONS

▪ Ceilings & Walls ▪ All Facets of Ceiling Work  
 ▪ Domestic & Commercial ▪ Office Partitioning  
 All Reno Work Local and Loyal  
**0409 953 369**

## Charter Services

**Rove Charters**  
 Local transport and tour company for groups of any size.  
**08 6185 1333**  
 www.rovecharters.com.au  
 Airport transfers and fifo runs  
 Small and Large group tours  
 Wedding and Event Transfer  
 Cruise Ship Transfer

## Concrete

**Ocean Road Concrete**  
 Driveways - Shed Pads - Exposed Aggregate  
 Soak wells - Drainage  
 From preparation to completion.  
**FREE QUOTES** **LOCALLY BASED**  
 Ph Jamie **0472 596 125**  
 e: oceanroadco@outlook.com

## B.C. CONCRETE DESIGN

Cracked Pea Gravel/Exposed Aggregate  
 Crossovers • Shed Floors • Drives  
 House Extensions • Patios  
**Bobcat & Truck**  
 Call Anytime **0457 611 348**

## Concrete

**TIGER CONCRETE**  
 FREE QUOTES • NO MESS NO FUSS  
 Quality work, all types of concreting  
**Bobcat and Truck**  
**Mike 0407 989 927**

## Electrical

**Andrews Electrical Systems**  
 Established 25 years • High Quality Guaranteed  
 Residential ✓ Electrical Installations  
 Commercial ✓ Electrical Maintenance  
 Industrial ✓ Air Conditioning  
 ✓ Telephone and TV  
 ✓ CCTV and Data  
 Call Andrew **0420 956 432**  
 Email: andrewsesperth@gmail.com

## Offenburg Electrical Services

For all your electrical repairs, maintenance and installs.  
**Call Dean 0447881208**  
 or email offenburgelec@gmail.com

## Mrs Fixit!

Female Electrical Contractor  
 Free Quotes & No Call Out Fees  
 TV / ANTENNAS • LIGHTS • POWER POINTS  
 SAFETY SWITCHES / RCD'S • SMOKE DETECTORS  
 REPAIR & MAINTENANCE • HOT WATER SYSTEMS  
 Seniors | Pensioners | HCC Discounts  
**MARDI GLADWELL 0430 035 345**

## Fencing

## ALLBLACKS FENCING

Professional Kiwi fencer for all your farm & residential fencing requirements  
**Marty 0484 595 985**

## Flooring

## Saints

Timber Floor Sanding  
 Level to Fine Sanding and Polishing of All Timber Floors  
 For an obligation free quote call Terry **0417 916 351**

## Gardening

## FULL BLOWN GARDEN MAINTENANCE

ABN: 77 592 171 029  
 ✓ Rubbish Removal  
 ✓ Dog Poop Removal  
 ✓ Lawn Mowing  
 ✓ Planting  
 ✓ Weeding  
 ✓ Pruning  
 ✓ Hedging  
 ✓ Yard clean ups  
 ✓ Ride on mowing  
 ✓ Pressure cleaning  
 ✓ Bush fire ready clean ups  
**Damien 0431 011 369**  
 Fully Insured  
 FREE QUOTES  
 Police Cleared

## Gutters

## YOUR LOCAL GUTTER SPECIALIST

PROFESSIONAL SERVICE & REPAIRS  
 • GUTTERS & DOWNPIPES | NEW AND REPLACEMENT  
 • METAL ROOFING | NEW AND REPLACEMENT  
 • ROOF COATING AND RESTORATIONS  
 • MAINTENANCE  
 • LEAKS AND ROOF REPORTS  
 CONTACT PETE FOR A FREE QUOTE  
**9274 7663**  
 sales@prowestroofing.com.au  
 prowestroofing.com.au

## EASTERN HILLS PLASTERING

ABN 69 373 874 693  
 All Aspects of Plastering - Concrete Skim  
 Coating - Acrylic Texture Finish - Renovations  
**30 YEARS EXPERIENCE FREE QUOTES**  
**TONY 0406 675 211**  
 easternhillsplastering@outlook.com

## Handyman

**allwork HANDYMAN SERVICES**  
 SPECIALISING IN ALL INDOOR AND OUTDOOR HOME MAINTENANCE  
 • Landscaping • Flat Packs • Painting  
 • Limestone Walls • Reticulation • Brickpaving  
 • Gutter Cleaning • Carpentry • General Repairs  
 Contact Trevor **0424 130 555**

## TRADE QUALIFIED

Carpentry • Joinery • Cabinetmaking  
 Doors • Decks • Skirting • Robes  
 Sash Windows • Furniture Repairs  
 Kitchenette • Flatpaks • Pergolas  
 Shelving • Fencing • Painting  
 Tiling • Garden Maintenance  
 Paving • Gutter Cleaning  
 High Pressure Cleaning  
**FULL POLICE CLEARANCE | PENSIONERS DISCOUNT**  
**Mal 0400 250 761**  
 malcolmsansom333@gmail.com

## EVOLVE BUILDING & MAINTENANCE

• Renovations  
 • Property Maintenance  
 • Handyman  
**0432 139 879**  
 Fully Insured ABN #14173780409 garys081@gmail.com

## Space for Sale

**Michael's Stonework**  
 Servicing All areas  
**Limestone & Coffee Rock**  
 Small Retaining Walls, Steps, Pillars, Stone Pitching, Garden Beds  
 For a FREE quote & reliable service call:  
**0427 190 273**

## Limestone

## Painting

## PP Maintenance

ABN: 86 642 331 437  
**PAUL 0477 660 703**  
 paul.percudani@outlook.com  
 • Painting (Interior & Exterior) • Demolition  
 • General Repairs • Pressure Cleaning  
 • Restoration Home or Office (pre sale or lease)

## JIM OLSEN

Painter & Decorator  
 FREE QUOTES - QUALITY WORK  
 Reg# 3749  
**0430 339 118**

## Pest Control

## Mal's Pest & Weed Services

Free Quotes  
 • Servicing the Hills and surround for 30 years  
 • Specialising in termite treatments & inspections  
 Call Sean **0417 905 708**

## Plastering

## AMC ROOFING

Specialising in All Tiled Roofing  
 New Roofs  
 Maintenance & Repairs  
 Free Quotes - Aaron Carter  
 Mob: 0417 930 817

## AR Specialist Roofing

Solutions for all your roofing needs including  
 • roof restoration • gutters • leaks  
 • gutter guard installation • downpipes • sheeting  
 • custom flashings • gutter cleaning • carpentry  
 house painting • roof cleaning • PATIO BUILDING  
 Call Andrew **0410 669 184**  
 arspecialistroofing@gmail.com

## ROOF TILE REPAIRS

For all your Roof Tile Repairs  
 Contact David for a free quote on  
**0413 240 203 or 9255 4003**  
 Specialising in: Leak Repairs • Gutter Clean  
 • Tiling • Re-ridging • Re-pointing

## Looking for a tradie?

Now you can find a tradie in the paper  
**AND** on our website anytime go to:  
**www.echonepaper.com.au**

## Plumbing

**LOCAL PLUMBER**  
 PL9956  
 Same Day Service  
 Blocked Drain, Taps, Toilets  
 Burst Pipes, Hot Water  
 Same Day Emergencies: 24hrs  
**9468 2581**  
 NO CALL OUT\* + SENIOR DISCOUNT  
 Your Best Local Plumber!

## Hi I'm Local

In Your Area  
 Hot Water Expert  
 ✓ Senior Discounts  
 ✓ Upfront Pricing  
 ✓ Fast Plumber  
 ✓ Drains, Taps, Toilets  
**\$0 Call Out\***  
**Plumbing Emergencies 24/7**  
**6244 3226**  
 \*conditions apply PL9956

## The Tap Doctor

FOR ALL PLUMBING & GAS  
 • Taps • Toilets • Hot Water Systems • Blocked Drains  
 • Burst Pipes • Leak Detection • Blocked Drains  
**Call Today 1300 655 827**  
 Our Service Will Amaze You  
 PL6703 www.thetapdoctor.com GF10208

## Local Plumber

Same Day Service  
 Hot Water Expert  
 - Upfront Prices  
 - Pensioners Save  
 - Drains, Taps, Toilets  
 - Burst Pipes, Gas  
**\$0 Call Out\***  
 Emergency Plumbing 24hrs  
**6118 6368**  
 PL9956 \*conditions apply

## Roofing

## Discover our digital edition online

**ECHO NEWS**  
 Privately owned & locally independent  
**Discover our digital edition online**  
 www.echonepaper.com.au

## Tree Services

**HILLS TREE SOLUTIONS**  
 For all your Tree Lopping and Stumpgrinding Needs  
 • Locally owned & operated • Call 24/7  
 • Fully Insured • Cheapest Prices Guaranteed  
 • Horizon Power Accredited • Servicing All Areas  
**CALL 9295 6511 OR 0414 438 610**

## Payne's Tree Services

TLC Tree Services has merged with  
**Payne's Tree Services**  
**FREE QUOTES AND ADVICE**  
 • MULCHING • LAND CLEARING  
 • STUMP GRINDING  
 • TREE LOPPING  
 Call Clint on **0455 132 014**  
 paynestreeservices.com.au

## Window Cleaning

**TATANIA'S Window Cleaning**  
 Homes, Shopfronts, Offices, Tracks & Flyscreens  
**0467 282 127**  
 Police Clearance  
 tataniawindows@gmail.com

## ASK ABOUT OUR GREAT PRICES FOR TRADES

## Indemnity and Warranty

**ECHO NEWS**  
 Privately owned & locally independent  
**Indemnity and Warranty**  
 ECHO NEWSPAPER CONDITIONS OF ACCEPTANCE  
 When an individual or other legal entity ("the Customer") requests Echo Newspaper ("Echo") to place an advertisement in this Newspaper, they agree to be bound by the following terms and conditions:

1. Echo, at its sole discretion, may decline to publish any advertisement requested by a Customer. If Echo decides not to publish a particular advertisement, there is no obligation on Echo to disclose the reasons for its decision, and Echo will not be liable for any loss or damage occasioned to the Customer as a result of the decision.
2. Echo will not be liable for any loss or damage caused to a Customer as a result of delay or as a result of Echo failing to place a requested advertisement or publishing an advertisement containing an error or omission.
3. Echo may, at its sole discretion, decide to refund a Customer a portion of the cost of the advertisement if it forms the view that the error was not attributable to the Customer and the Customer notifies Echo of the error or omission before 5.00pm on the day the advertisement first appears in the Newspaper.
4. Complaints concerning the accuracy of any invoice must be notified to Echo within 30 days from the end of the month in which the advertisement was published, after which time the Customer forfeits any rights it may have had to challenge the invoices.
5. The Customer warrants that publication of the requested advertisement/s will not contravene any laws, whether statutory, equitable or otherwise, and agrees to wholly indemnify Echo (and its employees and agents) against all expenses, loss and damage arising directly or indirectly from the publication of the advertisement/s.

## AMC ROOFING

Specialising in All Tiled Roofing  
 New Roofs  
 Maintenance & Repairs  
 Free Quotes - Aaron Carter  
 Mob: 0417 930 817

## Discover our digital edition online

**ECHO NEWS**  
 Privately owned & locally independent  
**Discover our digital edition online**  
 www.echonepaper.com.au



# ECHO Classifieds

9374 6666

classifieds@echo-news.com

BOOK ONLINE: www.echonepaper.com.au

## Employment

### Apprentice Signwriter Wanted

Have you just left school and are looking for a career? If so, this advert could be for you.

### Scene Signs Pty Ltd

Located in Bellevue are seeking an enthusiastic person to fill the position of apprentice signwriter. If you are interested Email resumes to info@scenesigns.com.au Or ring 9274 8113 for more information

## ECHO NEWS

### ADVERTISING SALES EXECUTIVE

If you enjoy meeting new people and have an outgoing personality, then this is the job for you.

We are a small, privately owned and independent newspaper looking for an energetic and vibrant person to join our team.

The successful applicant will have:

- A current "C" class drivers licence and reliable vehicle.
- A smart appearance with a strong commitment to customer service and the ability to develop and implement successful sales strategies, including digital, by building and maintaining long lasting client relationships.
- Strong negotiation verbal and written skills with excellent presentation skills is a must.

This position is Monday-Friday and offers a salary package, including a commission structure with a weekly car allowance.

Email Curriculum Vitae to  
General Manager / Editor  
E: peter.lewis@echo-news.com

## Electrician

LITL Electrical  
All types of electrical work. Jeff Overton  
0483 858 603.  
EC14844

## Gutter Cleaning

Gutter cleaning & solar panel cleaning. Jason  
0421 455 546.

## Hobby Farm Services

Slashing, mowing, wool buying, firebreaks & property cleanups. Ian 0458 510 048.

## Lawn Mowing



Tony's Lawnmowing, Handyman & Firewood. Cheap rates. Midland & Surrounding Areas. 0431 831 948.

## Music

ACCORDION AND GUITAR lessons for beginners only. Taught to advanced level. Ph/Txt Silvio 0478. 194.662.

## Painting

AAA PAINTING INTERIOR/EXTERIOR For very competitive prices and old fashioned service ph Nathan on 0409 247 293. (Reg. No. 6605)

Painting, Gardening, Pressure Cleaning. 0477 660 703. Local.

## Plastering

SAM'S PLASTERWORK patch-ups to water damaged walls and cracks, sand finish, float and set. Call 0478 194 662.

## Plumbing



MASTERS PLUMBINGAS All Plumbing & Gas work, Blockages, Hot water units, Leaks, Renovations, Burst pipes. 24/7 Emergency Service. NO CALL OUT FEE David: 0416 644 191. PL-9554 GF-011284

## Regrouting

Bathroom Regrouting. Call Andrew 0413 158 763.

## Solar Services

Solar Panel Cleaning with Anti Mould & Solar Wax Treatment. 0421 455 546.

## Wanted to buy

Records, LP's or 45's collections + turntables + cassettes. 0424 489 910. Guildford.

## Window Cleaning

Tatania's Window Cleaning. Tracks. Frames & Fly screens. 0467 282 127.

## Online Gig Guide

SCAN ME



ENTERTAINMENT & GIG GUIDE

## Public Notices

### CITY OF SWAN

PROPOSED FORM 1 -REGULATIONS 6,7 & 19 - NEW SHOP BUILDING (MARKET FRESH IGA) AND MODIFICATIONS TO THE BARKER'S STORE AND WAREHOUSE BUILDING  
LOT 450 (NO.124) SWAN STREET, GUILDFORD WA 6055

The City of Swan has received a Development Assessment Panel development application for a new Shop building (Market Fresh IGA) and modifications to the Barker's Store and Warehouse building at 124 Swan Street, Guildford.

Parties wishing to make a submission on the application may view the documentation at the City of Swan Administration Centre, 2 Midland Square, MIDLAND between the hours of 8:00am and 5:00pm Monday to Friday or on the City's website:

<https://swanengage.swan.wa.gov.au/planning>

Closing date for the submission is 21 January 2025.

Should you wish to comment on this proposal please do so via the Online Feedback Form available on the City's website.

Stephen Cain  
Chief Executive Officer  
City of Swan  
PO Box 196, Midland, 6936



### CITY OF SWAN

PROPOSED - TO USE A PORTION OF THE LAND FOR A TELECOMMUNICATIONS INFRASTRUCTURE INCLUDING ASSOCIATED DEVELOPMENT  
LOT 1002 SOUTH BALLAJURA COMMUNITY CENTRE (NO.15) HAMELIN DRIVE, BALLAJURA WA 6066

The City of Swan has received a proposal for the above land. Any interested persons are invited to view the documentation at the City of Swan Administration Centre, 2 Midland Square, MIDLAND between the hours of 8:00am and 5:00pm Monday to Friday or on the City's website:

<https://swanengage.swan.wa.gov.au/planningconsultations>

Should you wish to comment on this proposal you may do so via the Online Feedback Form available on the City's website on or before 10 January 2025.

Submissions, in writing, addressed to the undersigned, may be lodged on or before 23 December 2024

Stephen Cain  
Chief Executive Officer  
City of Swan  
PO Box 196, Midland, 6936



### CITY OF SWAN

PROPOSED TELECOMMUNICATIONS FACILITY  
LOT 1 (NO.336) DALGETY ROAD RED HILL WA 6056

The City of Swan has received a proposal for the above land. Any interested persons are invited to view the documentation at the City of Swan Administration Centre, 2 Midland Square, MIDLAND between the hours of 8:00am and 5:00pm Monday to Friday or on the City's website:

<https://swanengage.swan.wa.gov.au/planningconsultations>

Should you wish to comment on this proposal you may do so via the Online Feedback Form available on the City's website on or before 20 January 2025.

Stephen Cain  
Chief Executive Officer  
City of Swan  
PO Box 196, Midland, 6936



## Ellenbrook line celebrations

from page 3

"I'm proud my government could partner with the Cook Labor government to deliver this transformational project."

Premier Roger Cook said WA Labor promised to build the Metronet Ellenbrook Line.

"We've delivered on our promise. Metronet will change lives in our north-eastern suburbs, providing a fast and affordable link to the city on our world-class rail network.

"I want to thank the thousands of workers that have built this game-changing infrastructure, and I want to thank the community for never giving up, even through years of broken Liberal Party promises.

"This is what Metronet and my WA Labor Government is all about – affordable travel, creating jobs."

Transport Minister Rita Saffioti said while it's been coming for a while, she was very happy to be able to say that Ellenbrook finally has a train.

"The people in our north-east have waited a long time for this train – having been let down repeatedly by the broken promises of the Liberals and Nationals. I am proud to be part of a team that gets on with the job of delivering on its promises"

## Forrestfield trainer speaks on surviving DV trauma

from page 5.

"My whole life it's the same kind of man but just different faces and I would always find myself in yet again another situation where another man had hurt me and I couldn't figure it out.

"So, I joined a gym, and I started to get fit.

"I read as much as I could about trauma and psychology, I read about narcissism and psychopathy, and I started to understand myself and I started to understand these men.

"Then I got clean, and I got into meditation, yoga, and hiking and it took me years of work and trying different things to be who I am now and to be able to say I'm not affected by PTSD or depression anymore.

"I just want everyone to know that if you knew me back then and you know me now I'm such a different person it would blow your mind

"It blows my own mind, and I can't believe what a human being is capable of when they put their mind to it.

"I didn't know I had this strength and so I just want to leave people with this message of hope that your life can change at any moment it doesn't mean that it won't be hard work, but anything is possible you just have to try to believe in yourself and just take those baby steps."

If you are experiencing family or domestic violence, help can be found by calling 1800RESPECT.

## DV march is a call to action

from page 5.

Mr Vapor asked the audience if they thought he was weak for sharing that with them, and the Midland crowd called out in support of his story.

"Strength comes from vulnerability," Mr Vapor said.

"The problem that we face is that hiding from our problems, hiding from the stuff that we've been through, hiding from our emotions, masking them with violence, that's what causes a lot of this — that is friggig weak.

"Strength really comes from admitting your issues, acknowledging your past, acknowledging what you've been through and being able to talk about it, being able to be vulnerable enough to move on from it in a healthy way, being able to share it with those that are closest to you.

"After all, real men would do anything for their family, right?"

After the introductory speeches, the crowds gathered their placards and mustered to begin their 11th march and set off with the WA Police band leading the procession while playing bagpipes and drums.

The march circled back to Juniper Gardens where the rest of the speeches were presented and Midland's Moorditj Maaman group performed a collection of lullabies written by Indigenous men aimed at showcasing the nurturing side of masculinity.

Swan family and domestic violence network chairperson Kristy Darnborough said the march provided a message of solidarity and hope for those affected by family and domestic violence.

"It is inspiring to see the community come together each year to stand with survivors," she said. "Together, we are committed to doing everything we can to put a stop to violence against women.

"There is no excuse for abuse — everyone deserves to feel safe and supported in their relationships and families."

# ECHO Notice Board

A free service for non-profit organisations

9374 6666

editorial@echo-news.com

## Upcoming Events

- The Save the Children Hills branch will hold its Christmas fund raising stall in the Mundaring Shopping Mall outside Woolworths from 9am to 3.30pm on Friday, December 20. The stall will include popular second-hand books, hand knits, rugs, small gifts and plants. There is no EFTPOS available at the stall but there is an ATM machine nearby.
- Midland CWA meets at the Midland Railway Yards Blacksmith Lane (West) Midland on the third Wednesday of each month at 10am.

CWA Flags are displayed on Yelverton Drive, Midland on meeting days. CWA offers a diverse range of interests and each branch works to meet local community needs. Call Maureen on 0460 777 557 or email maureenbarker1@gmail.com

Noticeboard is for non-profits and community groups advertising free/low cost events/programs. Entries must be emailed to editorial@echo-news.com two weeks before the event.

## Woofers of the week



Fern is a nine-month-old jack russell cross who needs a home without small children. She is a timid dog but once she makes friends with you she is fine. She likes other dogs but not cats. She is sterilised, vaccinated and microchipped. Costs apply. Contact Bakers Hill Dog Sanctuary on 9574 1438.





The match raised more than \$1900 through donations and sponsorships.

## U18 side victorious in charity clash

Perth Hills United FC hosted a highly anticipated charity match on Wednesday December 4, between the Masters team and the U18 squad, with proceeds benefitting the fantastic work of Indigo Junction.

The Masters team was coached by club president and legend Jim McCarthy, and the U18 squad was led by former first team coach Steve Haywood.

The stakes were high and the banter even higher. Adding to the spectacle, celebrity referee Matt Webb, renowned for his questionable impartiality and tactical "genius" brought his signature flair to the centre circle.

The early exchanges saw both sides brimming with energy, but it was the U18 who struck first.

A barrage of corners finally bore fruit when Ellis Gould pounced from close range to give the youngsters a deserved lead.

For a while, it seemed they might run away with it, until "ring-in" Mark Tenney joined the fray.

Known for his knack for finding the net, Tenney equalised after a good press, rounding the keeper and finishing coolly into an empty net.

As the half wore on, the match teetered on a knife's edge until the young apprentices unleashed three devastating counter attacks, netting three goals in five minutes with Zac Linton netting two and Jasper Leeuwangh one to head into the break

with a commanding 4-1 lead and again ensuring the Masters would sleep well that night.

The Masters dressing room was undoubtedly a scene of deep reflection, while the U18 basked in their dominant end to the half.

The second half, however, proved a tale of resilience, and the Masters clawed their way back into the game.

Tenney, once again proving his value to the team, and perhaps his betrayal to the metros squad, added his second goal to bridge the gap to 4-2.

With the crowd sensing the possibility of a dramatic comeback, it was Steve Reay who kept their hopes alive with another close-range finish and at 4-3 it was game on.

Alas, it wasn't to be as the U18 regrouped and found fortune on their side late in the game.

First Luis Parkinson, and then Ellis Gould unleashed speculative long-range efforts that took unfortunate deflections, leaving the Masters keeper with no chance.

As the ball hit the back of the net for the sixth time, the U18 celebrated a 6-3 victory, sealing the win.

Despite the loss, the Masters showcased grit and determination, while the U18 demonstrated why they are the future of the club.

Most importantly, the match raised \$1932 for Indigo Junction, ensuring that everyone left the pitch a winner.

## Second grade win

JOSHUA MCKENZIE

MIDLAND Guildford senior male grades completed two-day fixtures last weekend while the senior female grades completed their next round of T20 fixtures.

The male First grade suffered another defeat in their match against Subiaco Floreat.

The male Second grade faced the same opponent in a game that produced a number of standout individual performances.

After losing the toss and being asked to field first, the bowling efforts were led by debutant Jacob Heslop who took 5-85 from 27 overs.

Brayden Brehaut also took 3-53 from 16.4 overs as the team restricted their opposition to 280 all out from 88.4 overs.

In the second innings of the match, Brehaut continued his strong match with an outstanding innings of 104 runs not out from 136 balls that would lead the side to a six wicket victory. Hayden Collins (54 from 128) and Calan Hill (59 from 45) would also produce valuable contributions with the bat in the win.

In the male Third grade match against Subiaco Floreat, Vishver Morendage (47 from 87) and Tom Southon (40 from 87) were the key contributors to the side posting 187 all out.

In the bowling innings, William Shackles (4-34 from 19 overs) and Tom Hayward (3-13 from 16.2 overs) were the best bowlers as the side dismissed their opponents for 162 in a narrow 15 run victory.

The male Fourth grade played away at Subiaco Floreat and posted 9-313 after winning the toss and choosing to bat first.

Oliver Voorn (75), Lennon Brookes (74) and Parth Patel (55) all scored half-centuries in the batting innings, before the bowlers restricted the opposition to 165 all out. Brookes was the standout bowler with 4-46 from 22 overs as the side won by 148 runs.

The female A grade match restricted Wanneroo to 9-91 from 20 overs. It was a straightforward run chase which saw the target passed with five wickets to spare and 40 balls remaining.

## Exciting Times Ahead: Midland City Welcomes New LDV Dealership

MIDLAND City is now home to an exciting addition: its brand-new LDV dealership, which has already opened its doors to the public on December 12.

This dealership is set to become a cornerstone of our local automotive landscape, bringing a dynamic brand that combines innovation, quality, and affordability to the heart of our community.

LDV, known for its award-winning range of vehicles, including versatile vans, robust utes, and stylish SUVs, has been a game-changer in the Australian market.

With a reputation for delivering exceptional value, advanced technology, and dependable performance, LDV vehicles have quickly become a favourite among businesses, families, and adventurers alike.

The new dealership, Midland City LDV promises to elevate the car-buying experience.

Featuring a modern showroom, an extensive range of LDV vehicles, and a commitment to top-notch customer service, the dealership is designed to cater to diverse needs.

Whether you're a tradie looking for a reliable workhorse like the T60 Max ute, a family exploring the practicality of the D90 SUV, or a business owner seeking the perfect commercial van, the team at Midland City LDV is ready to assist.

The dealership's expert and enthusiastic team is fully equipped

to provide a seamless car-buying journey.

Their passion for the LDV brand and dedication to customer satisfaction are already earning praise from early visitors.

Whether you're exploring options for your next vehicle or seeking maintenance for an existing one, you'll find friendly faces and top-tier service every step of the way.

This opening also signifies a boost for the local economy. Beyond providing new jobs, the dealership is poised to support the community with initiatives that extend beyond the showroom.

From collaborations with local businesses to community-driven events, Midland City LDV aims to be an active and engaged member in the community.

For those who haven't yet visited, now is the perfect time to explore everything the dealership has to offer. With competitive pricing, flexible financing options, and a showroom that embodies LDV's cutting-edge vision, the facility is already setting new standards in Midland City's automotive scene.

This new chapter is more than just about cars – it's about connecting with the community and driving progress together.

Midland City's LDV dealership, located at 188 Great Eastern Highway is open and ready to welcome you into the future of driving!

For further information phone (08) 6149 5219



Midland City's LDV dealership, located at 188 Great Eastern Highway is now open.



# ECHO Local Real Estate

**Residential  
Commercial  
Rural & Country**



## Forrestfield house with room to move

**THIS three-bedroom, one-bathroom Forrestfield house is ready to be sold on after being the home of the current owner for 25 years.**

The red brick house sits on 792sqm of land and has a generous front yard next to the single carport at the end of its considerably spacious driveway.

Walk inside to discover the powder blue walls and wood patterned vinyl flooring that characterises most of the house's common spaces.

The living room sits at the front left of the home, with semi-flush mount lights on the ceiling that have a woven straw design, which shares an open space with a dining table area and connects to a sliding door that leads into the backyard and lets in ample sunlight.

The home comes with ducted air-conditioning to keep the summer days comfortably cool.

The kitchen has a stone benchtop with a sink built into it and drawers and cupboards beneath it and a window to the backyard.

Step outside to access a free-standing garage in the backyard with power and room enough to fit a pool table, and a back patio to sit down with some fresh air in the comfort and privacy of home.

There is dual access as the driveway goes all the way to the backyard, providing plenty of room for friends and guests to park if an event is being held from home.

Farmer Jacks is less than 1km away, keeping grocery shopping conveniently close to home, and if the moment calls for a bigger shopping trip, the Forrestfield shopping centre is also about a five-minute drive.

A school is also nearby with Wattle Grove Primary School just a seven-minute drive from home.

This home is also less than 2km from Hartfield Park which is a hub for community sports groups such as the rugby, hockey, tennis and football clubs, providing a prime location for sports enthusiasts or active living individuals that want home to be close to where they train.

This property is in a prime location to get involved in community sports through the proximity to Hartfield Park, while keeping many other amenities within easy access.

The property is also zoned R25-40 giving the home development potential if buyers seek to develop.

**Address:**  
23 Dorchester Road, Forrestfield  
**Price:**  
From \$649,500  
**Agency:**  
Real Estate Plus  
For more information contact  
Edward Harfouche on 0409 004 424



# REAL ESTATE Plus

.com.au

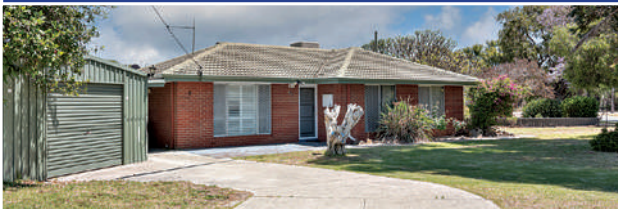


**CHIDLOW**  
9572 4113

**MIDLAND**  
9274 5000

**COMMERCIAL & INDUSTRIAL**  
6146 3333

### FORRESTFIELD FROM \$649,500



**ROOM TO MOVE**  
23 Dorchester Road

- Three bedrooms
- One bathroom
- Ducted air-conditioning
- Kitchen/Dining
- Free-standing garage, games room

Edward  
0409 004 424  
Midland  
9274 5000

### MIDLAND FROM \$329,000



**LOW MAINTENANCE UNIT**  
8/59 Victoria Street

- Immediate Rental Income
- Low Maintenance
- Strong Location Appeal
- Tenant Ready
- Rental rate of \$400pw

Edward  
0409 004 424  
Midland  
9274 5000

### WOOROLOO From \$899,000

**RIDING TRAILS,  
COTTAGE + STUDIO  
ON 15 ACRES**

7260 Werribee Road



- 3 bed Home + Limestone Studio
- 14.99 ac of pasture and natural vegetation
- Large paddock plus 2 medium paddocks
- Air conditioners and wood heaters
- Double garage with power

Jo  
0409 847 102  
Chidlow  
9572 4113

### MIDLAND \$2,300 p/m + O/G'S + GST

**LOCAL  
SHOP / OFFICE  
108SQM**

3/73 Great Eastern Highway



- Near new premises, ideal for your business
- Open plan with disabled toilet, kitchen, on-site staff parking
- Negotiable lease terms
- Rent: \$2,300/m + GST; Outgoings: \$420/m + GST

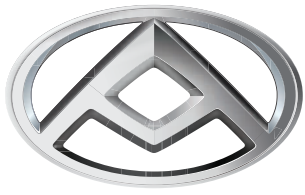
Mike  
0403 621 899  
Comm & Ind  
6146 3333

REAL ESTATE Plus

Plus LOANS  
ACL: 383 631

Plus Your Settlements





# LDV MIDLAND CITY

## T60 MAX MANUAL

FROM **\$35,990**

DRIVEAWAY FOR ABN HOLDERS\*



THAT'S **\$3000 OFF**

GET **\$1500 GIFT CARD**

## ALL-NEW DELIVER7

FROM **\$42,490**

DRIVEAWAY FOR ABN HOLDERS\*



### DELIVERS 24/7

# LDV Now In Midland

Your one stop shop for new & fleet vehicle sales, service, tyres, parts, accessories, finance and insurance.

## 7 YEAR 200,000KM\* WARRANTY

Midland City LDV  
188 Great Eastern Hwy, Midland WA 6056  
(08) 6149 5219



Scan to view website

\*\$3,000 deduction of the manufacturer's recommended driveaway price and complimentary \$1,500 gift card is available on new stock T60 MAX vehicles purchased and delivered between 1 October 2024 and 31 December 2024. Excludes T60 MAX Plus. While stock lasts. Not available to fleet, government, or rental buyers, or with other offers. LDV Australia reserves the right to vary, extend or withdraw this offer. Free Virtual Visa Gift Card ('Card') is issued by Heritage and People's Choice Limited trading as Heritage Bank ABN 11 087 651 125 ('Heritage') pursuant to a licence from Visa Worldwide PTE Ltd. For full terms and conditions, visit: [incentivesgiftcard.com.au/terms-conditions/](https://incentivesgiftcard.com.au/terms-conditions/) Driveaway pricing is valid for new stock vehicles purchased and delivered from participating dealers between 1 October 2024 and 31 December 2024. While stock lasts. \* Subject to terms, conditions and exclusions at [ldvautomotive.com.au](https://ldvautomotive.com.au)