

ECHO NEWS

SINCE 1985

Friday, February 7, 2025

ADVERTISEMENT

Introducing
Mike MATICH
LIBERAL FOR MIDLAND



Authorised by
S. Morgan, Liberal Party,
2/12 Parliament Place,
West Perth WA 6005.

Local Business Supporting Local People

VOL.42 NO.1899

Chidlow water crisis gets a response



PG3

Bilgoman pool upgrades lack energy efficiency



PG5

Swan SES seeks historic stories



PG6



Picture: Nan Tan Photography

PG 4

R U OK? fundraiser

Perth Hills cyclists are raising funds and awareness for R U OK? Day by riding from Bunbury to Balcatta.

Kalamunda Funeral Company
JUST give us a call. No Fuss, No Frills.



Just Cremations
17 Canning Rd, Kalamunda 1800 65 35 95

TREE AESTHETICS

Shop Online Now!
www.treeaesthetics.com.au

PERTH HILLS NEWEST SOIL CENTRE
Sand • Soils • Gravels • Mulches • Firewood

- Pick-up or delivery options available
- Competitive prices
- Wholesale prices on selected products
- Still Perth Hills preferred Tree Service company

Order your FIREWOOD now

OPENING HOURS
8am-4.30pm Monday-Friday
Lot 10 Talbot Road HAZELMERE
(ENTRY OFF MIDLAND ROAD)

Call us now
9454 8640 or 9250 6599

office@treeaesthetics.com.au www.treeaesthetics.com.au

"You adore it, we store it"



FORRESTFIELD SELF STORAGE

Family owned & operated
We sell boxes and packaging

P: 08 6162 3777
253 Berkshire Road, Forrestfield
info@forrestfieldstorage.com.au
www.forrestfieldselfstorage.com.au

Realmark

I'll ensure you're not undersold in the Swan Valley.

Do you want a fast sale, or a smart sale?

Don't settle for less; we employ a results driven approach to unveil your home's unique charm, ensuring you're sold, not undersold in the Swan Valley.



Faith Baptist Church ELLENBROOK

"Reaching People for Christ"

Woodlake Community Centre
Highpoint Blvd

0425 354 159

Sundays 3pm



Come along this Sunday to

CHURCH

The only thing missing is "U"

Grace Baptist Church

SERVICE TIMES

SUNDAY SCHOOL: 9.30am

FAMILY WORSHIP: 10.30am

MIDWEEK PRAYER MEETING: 7.00pm

Meeting at: Brown Park Community Centre - Salisbury Rd, Swan View

Ellenbrook Service @3pm

Pastor: Graham Thomas
Ph: 0425 354 159
gbcmidland.org.au

Woodlake Community Centre

"For by grace are ye saved through faith..." Ephesians 2:8



GLEN FORREST CYCLISTS, LINCOLN SMITH, ROD GREENUP AND RICHARD ELLIOT WILL JOIN OTHERS TO RAISE FUNDS AND PROMOTE R U OK DAY, RIDING FROM BUNBURY TO BALCATT A ALIGNING DATES WITH THE RAIL R U OK DAY DUE TO THEIR CONNECTION TO LOCAL RAIL INDUSTRY.

ECHO YOUR THOUGHTS

Have your say: editorial@echo-news.com

Tree policy revoked

Dear Echo News,

The City of Kalamunda revoked its tree retention policy, after just 12 months of operation.

When it was revoked it was on the basis that swift action would be taken, to ensure alternate measures were put in place to protect our remaining significant trees.

Nearly 12 months on and our dwindling canopy remains without specific policy or protection.

It appears the impact is evident, with many blocks within proximity to my house being significantly or completely cleared in recent months.

Another recent example is the proposed McDonald's and carwash development on Heath Road.

Two marri trees are graciously being spared by the development plans, but it appears two other trees noted as "significant" by the arborist report, along with

a well-established eucalyptus will be removed.

A number of councils across Perth have now successfully adopted tree retention policies and I think it's a poor reflection on our council that we currently have no such policy applicable.

It would be appreciated by myself and many other members of the community if the promised prompt action to adopt a replacement tree protection policy be progressed through council with the utmost priority.

H Lill
Kalamunda

Midland Station is hopeless

Dear Echo News,

Despite a blowout in the budget from \$160 million to \$300m, the new Midland station is hopeless for humans and not much better for cars.

Pedestrians are forced to walk the full length of the station instead of being able to tag on or off as they leave.

Pity the poor disabled or walking challenged oldies.

The cars exiting the car park can't turn right in to Great Eastern Highway forcing us into a dangerous U turn or turning left and coming back to Lloyd Street.

They have completely ignored the rising emissions and have failed to provide EV charging and to make matters worse have cut down the only big trees providing shade.

Questions need to be asked.

Will there be pedestrian access to the platform?

Will EV charging be provided?

Will they replace the shade trees given Perth has the lowest tree coverage of all our cities?

Will we be able to turn right in to Great Eastern Highway?

Will there be separated lanes for personal EV, bikes and scooters to safely get to and from the station?

Hope you can get the answers I have been unable to get from Transport WA.

C Hughes
Midland

Pollies don't get the public

Dear Echo News,

Recent articles suggesting "Albanese is quietly heading for defeat" at the forthcoming election may be true.

But so is Dutton.

Neither 'gets' the Australian public, although Peter Dutton better 'gets' his right wing mob than Albo 'gets' his left wing mob - but neither represent anything of substance, nor even demonstrate core values.

Both waiver depending on which way the wind is blowing and committed Independents like David Pocock are rising to take their place.

The Greens would do better if they weren't so consensus-obsessed and would put all their machinery behind getting a few electable people into key seats.

But they'll never let go of their kumbaya ways, despite having the clearest ideology and perhaps the most sensible aim of preserving the planet (and us) rather than thinking only of economics.

As the world teeters on the brink of mediocrity-bordering delusional belief in 'strong men' who are actually weak-as, it's not looking good for humanity, let alone either Labor or the Coalition.

A hung parliament and a Labor-Greens or Labor-Independents bloc looks to be the most likely (and perhaps best) outcome.

P Carman
Hovea

Thought for the day

"Try to be a rainbow in someone else's cloud." - Maya Angelou

Telecom problems in the hills

Dear Echo News,

It's worth Echo readers knowing why some of us join political parties, because there's a lot of misinformation and cynicism out there.

I joined Labor to improve things for people, because you can't get things done easily on your own.

Hills people are frustrated with the telecom providers because they don't deliver what we're paying for.

We talked about this at a branch meeting in Kalamunda at the Zig Zag Cultural Centre and decided to write to the Albanese government's Communication Minister Michelle Rowland, urging her to use her power to better enforce customer service.

She wrote back with a very helpful reply promising improvements.

A week or so ago, Minister Rowland announced that the watchdog ACMA will get new powers to bail up failing telecoms providers, including faster enforcement, huge fines (up to

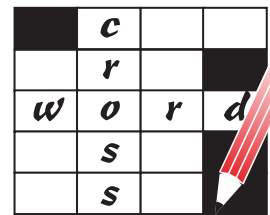
\$10m per breach) and so better service for all of us.

Even the telcos' peak body welcomed this speedy, hard-line action on behalf of us, the bill-paying punters.

This is why people band together in political parties: to make things better.

N Dickinson
Rivervale

INSIDE



P16 Crossword

ECHO News

ADDRESS:

Unit 4/9 The Avenue
Midland WA 6056

Phone: 9374 6666

GENERAL MANAGER / EDITOR

Peter W Lewis 9374 6605
peter.lewis@echo-news.com

ADVERTISING

sales@echo-news.com
Karon McCracken 9374 6610

EDITORIAL

editorial@echo-news.com
Anita McInnes 9374 6603
Guanhao Cheng 9374 6602
Cindy Cartojano 9374 6601

PRODUCTION

production@echo-news.com
Jeanene Allen 9374 6613
Liz Rowlands 9374 6613
Thomas Brady 9374 6613

ACCOUNTS

accounts@echo-news.com
Caprice Harries 9374 6604

OFFICE HOURS:

Monday-Thursday:

9.00am - 5pm

Closed Friday

Closed: Weekends & Public Holidays

SHIRE OF MUNDARING

COMMUNITY GRANTS program

Community Event | Matching | Milestone Event grants

Eligible community groups can now apply for financial assistance to undertake community events and projects that involve and benefit the local community, and to hold events that celebrate a significant milestone.

Search for Community Grants on the Shire website for funding guidelines or phone 9290 6678. All applicants must discuss their eligibility, ideas and options with the Community Engagement team before submitting an application.

Applications must be submitted at mundaring.smartygrants.com.au by 4pm Friday 7 March 2025.



Water Corporation responds to Chidlow complaints

GUANHAO CHENG

THE WATER Corporation has responded to complaints as Chidlow residents call for a town meeting with the Water Minister, residents and a Water Corporation representative on Monday, February 10.

A Water Corporation spokesperson said crews had been investigating recent reports of low water pressure to some homes in Chidlow.

"In recent weeks, part of this work has involved placing monitoring devices, known as loggers, at strategic locations to measure water pressure at different times of the day and night," they said.

"Work is ongoing, however, testing completed to date indicates the issue is likely to be intermittent and not widespread.

"We would like to reassure residents we are treating the investigation as a priority."

Last week, *Echo News* reported Chidlow residents had made complaints about water outages and drops in pressure during the hottest weeks in the year.

Chidlow resident Russell Cockman said his six-month correspondence with Water Corporation ended in a costly solution at his expense.

"(Water Corporation) basically said it was to do with the pumping cycles for the Goldfields pipeline," he said.

"We were at a point where we couldn't even turn on two sprinklers.

"There was back and forth for six months when we did pursue it and ultimately what they suggested was residents install their own water tank and pressure pumps to fix at their own expense the inconsistencies with water pressure.

"At the time, we had just bought a house, had a third child coming and had to hand water the lawn for three hours which was beyond a joke.

"Eventually we bit the bullet and got the tank and pump installed which was thousands of dollars we had to borrow from parents at the time and we've been running off that system since.

"Since installing the tank and the pump we noticed our power consumption went up about 20 per cent, and we suggested a reduction on our water rates and asked if there was a grant to help ease the hit of our investment for decent water pressure.

"They weren't prepared to help in any way with that."

The Water Corporation spokesperson said they understood low water pressure was disruptive, and to

anyone impacted, they sincerely apologised.

"Once complete, data gathered will help determine an appropriate course of action," they said.

"To support this work, we encourage anyone experiencing low pressure to please phone our customer team on 13 13 75.

"Dedicated case managers are ready to support any customers for whom this has been an ongoing issue.

"We are working with customers to address any known issues and will ensure all residents are kept updated with our findings."

Mrs Selleck said since escalating her issue she'd been given a dispute manager to liaise with and the operational team did all they could on her property.

The temporary header tank and pump had been installed since its suggestion last week.

Mrs Selleck said Water Corporation were discussing installing a permanent tank and pod to solve their issue for good, but it was not enough.

"That leaves everyone else out of it," she said.

"That would take the ombudsman away from this issue and we can't afford that for a community that will only see this get worse and worse as these blocks of land get subdivided into more properties.

"We subdivided my mother's property in the 80s, and back then there weren't the properties sitting across from us."

Mrs Selleck said this was an opportunity for the community, Water Corporation and the government to work together for a way forward.

"We're aware that a technical report had been submitted detailing the challenges of fixing this issue, but now they should be in a position to provide us some answers and let us know what their proposed solutions are.

"We want to work together to solve this problem, but we can't do it if we don't know what challenges they're dealing with.

"We need more transparency because we don't know how many are truly affected – we know general areas that are part of our action group but it's about sharing what the real numbers looks like.

"If Chidlow continues developing and grows with 1000 more people, what's the impact of that if we do nothing and what's the solution they're proposing?"

"We've extended an invite to the Water Minister and as part of the invite, we've said these are the things we want to understand, and we want to give them the opportunity to answer our questions."

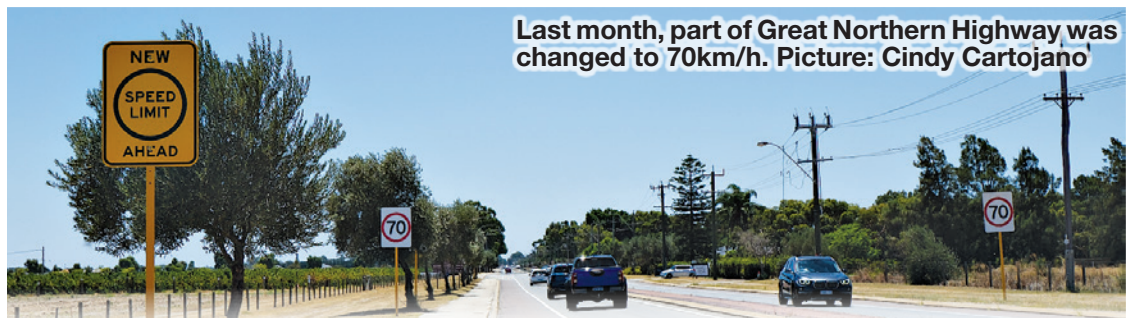
The meeting is to be held at Chidlow Hall at 6pm on February 10.



Chidlow resident Roger Selleck standing beside the temporary pump and tank installed by Water Corporation. Picture: Guanhao Cheng



Chidlow resident Roberta Selleck has solved the water issue on her property but wants a long-term community solution. Picture: Guanhao Cheng



Last month, part of Great Northern Highway was changed to 70km/h. Picture: Cindy Cartojano

Potential rat-run concerns along GNH

CINDY CARTOJANO

AN UPDATE earlier this year by Main Roads Western Australia to bring the speed limit down from 80km/h to 70km/h on Great Northern Highway (GNH) has been a contentious matter for Swan residents.

On January 22 the speed limit change was implemented on the 12km stretch from Reid Highway up to Apple Street.

"There is a complete lack of common sense and consistency in the way that Main Roads applies speed limits," Brigadoon resident Cathy Campbell said.

Ms Campbell said the change was inconsistent because the surrounding semi-rural residential roads such as Campersic Road and Oakover Road were still 80km/h.

"Because these roads haven't been updated, Main Roads have increased the risk on Campersic Road and Oakover," she said.

The lack of signage advising the new speed limit is also a significant issue for Ms Campbell.

"If you come down Campersic at 80, you go onto Oakover at 80 and then you turn left heading south on GNH, there is no speed limit sign to tell you what the speed limit is until you reach the 60 sign near the stock feeders and the high school," she said.

"If Main Roads were showing proper diligence, it should be assumed that they were looking at the feeder roads."

Jill Devaney who has lived in Middle Swan for five years is in favour of the decision to reduce the speed limit on GNH.

With 30 years of experience as an occupational therapist, Ms Devaney has seen countless lives ruined by motor vehicle accidents.

"The traumatic brain injuries are the most heart-breaking," she said.

"Australians are driving larger, heavier and therefore more dangerous vehicles.

"Slowing them down is vital for everyone's safety."

In correspondence with Main Roads, Ms Devaney was advised Oakover and Campersic Road are controlled by the City of Swan and they have not received a request from the city to review the speed limits on these roads.

She hopes to see speed limits brought down throughout the valley, considering the potential rat run which may occur due to speed limits on surrounding roads not being reduced.

A Main Roads spokesperson said a review completed late last year recommended standardisation of the speed limits in the area.

This means taking into consideration factors such as road function, traffic volumes, types of road users, roadside development, the frequency and type of intersections, the number of crossovers and reported crash data.

"Additionally, the highway is heavily utilised by oversized vehicles and vulnerable road users. There are currently no plans to add more signage in the area," the spokesperson said.

According to the WA Road Safety Commission, there were 188 road fatalities in WA last year.

Meanwhile the same data shows there are currently 14 road fatalities since the start of this year.

ADVERTISEMENT

THE GREENS

VOTE 1

JANELLE SEWELL

FOR KALAMUNDA

The major parties put profits before people and planet. **The Greens are here to change that.**

As your Greens candidate for Kalamunda, I want to take the concerns we all share about the **climate crisis** and **development pressures** in our community into WA parliament.

Change is possible, but you have to vote for it.

Authorised by D. Smith, The Greens (WA), 91/215 Stirling St. Perth WA 6000



Ballajura Intergenerational Playspace.



Ballajura Playspace officially opened

BALLAJURA'S new \$6.5 million intergenerational playspace at Weitj Park was officially opened last Thursday where hundreds of residents celebrated with a sausage sizzle, live music, ice cream truck and picnics.

The all-ages, all-abilities playspace features three distinct zones including a lawn area with barbecues, seating areas, an outdoor gym, a flying fox and a multi-swing set, an industrial play area for juniors, featuring a ninja assault course, basket swings, slides and trampolines, and a nature play area with a dry creek, rope net, stilts, balance logs, cubby building and balance ropes.

The playspace was a key priority for Ballajura residents, as outlined in the Ballajura local area plan, to provide amenities and infrastructure for public open space.

A Lotterywest grant of \$2m supported the project which will enable people in Ballajura to connect and build a sense of community belonging.

City of Swan Mayor Tanya Richardson said spaces like it were an important place of connection for the community.

"We are thrilled to achieve this for residents and the wider community," she said.

"It was very important that our community could have ownership of this space and so we engaged with local school children who told us they wanted to name it Emu Park.

"After discussion with Traditional Owner representatives, it was decided Weitj Park would be a great way to build inclusion and connection.

"Weitj is the Noongar word for Emu, which have a strong spiritual connection to the area."

Deputy Premier and West Swan MLA Rita Saffioti said the playspace was made possible with the support of the state government.

"The playspace is incredible and will serve families for many years to come.

"Having these fantastic playspaces where everyone in the community can play safely is so important, I thank everyone involved for making this happen.

"On behalf of the state government, a contribution of \$2m has helped make this happen and I'd like to acknowledge Lotterywest and the work they do with the community to make facilities like this possible," she said

For further information go to www.swan.wa.gov.au/city-and-council/planning-for-the-future/major-projects/ballajura-intergenerational-playspace



ADVERTISEMENT

Here to help!
DONNA FARAGHER JP MLC
 MEMBER FOR EAST METROPOLITAN REGION
 Shadow Minister for Community Services;
 Early Childhood Education; Seniors & Ageing; Youth

Ground Floor, 108 Swan Street Guildford 6055
 9379 0840 | faragher.eastmetro@mp.wa.gov.au
 Authorised by D.Faragher, Ground Floor, 108 Swan Street Guildford WA 6055

Rail R U OK? Day ride for mental health



Wheels of W3ll-Being members Neville Smith, Troy Taylor and Tony Dimovski. Picture: Nan Tan Photography

PETER W LEWIS

GOOSEBERRY Hill rider Troy Taylor and three of his mates from Glen Forrest will ride from Bunbury to Balcatta to raise funds and help promote R U OK? Day.

The Glen Forrest riders, Lincoln Smith, Rod Greenup and Richard Elliot will join the Wheels of W3ll-Being, a group of social cyclists who utilise their hobby to do great things for those in need of support.

The team are riding in aid of R U OK? and have aligned the dates with Rail R U OK? Day, due to the team's connection to the local rail industry, with two members of the team being managers at Forrestfield's Aurizon, the largest rail freight organisation in Australia.

Wheels of W3ll-Being spokesperson Troy Taylor said he had personal experience in the mental health area.

"Within my own family there are people who have suffered with anxiety and depression their whole life and I also lost a friend to suicide a little over three years ago," he said.

"In this day and age there are so many that suffer with poor mental health, feeling isolated, anxious and depressed. It is estimated that each day eight of these people take their own lives, with a further 30 attempting to do so.

"If we can help R U OK? just a little in their vision, then the benefits can be significant with effects far-reaching. The overall purpose of this ride and Wheels of W3ll-Being is to build connection, be safe, have fun and do good in the process," Mr Taylor said.

Rail R U OK? is a collaborative campaign between the TrackSAFE Foundation and R U OK?, supporting those struggling with life by empowering people to build meaningful connection with the aim of reducing suicide across Australia.

The TrackSAFE Foundation, established by the Australasian Railway Association and UGL in 2012, is Australia's only harm prevention charity focused on reducing deaths, injuries and near-hits on the rail network.

A TrackSafe spokesperson said the organisation wanted to inspire and empower the rail sector to create a safe, supportive R U OK? culture, and encourage workmates to look out for one another every day of the year.

The foundation also works to improve the wellbeing of rail employees and their next day of action will be held on Thursday, April 3.

There are many local businesses supporting the group through their sponsorship including Weld West from South Guildford, Steps Together Children's Therapy from Forrestfield and Empowered Centre from Midland among others.

When asked why supporting the ride was important to her, Ellen Taylor from Steps Together Children's Therapy said mental health was important for people of all ages, genders and walks of life but was still not understood or talked about enough.

"In my work, I spend a lot of time supporting little people to understand and cope with feelings, and knowing that it's ok to not be ok. R U OK? is a great resource to send this message to the rest of us."

Donations can be made at <https://join.ruok.org.au/fundraisers/troytaylor/wheels-of-w3ll-being>

SLW TRANSPORT PTY LTD

SLW Transport is family owned & operated

You need it moved just ask!

- Prime Movers
- Rigid Courier Utes
- Side Loaders
- Single Trailers – Triple Road Trains
- Oversize Haulage
- Mine & Construction Site Projects
- Wharf Pick-ups & Deliveries

Phone: 0438 774 201

130a Milner Rd, HIGH WYCOMBE WA 6057



The recently refurbished Bilgoman Aquatic Centre is yet to see energy efficient upgrades.

Pool upgrades lack energy efficiency

CINDY CARTOJANO

A REFURBISHED Bilgoman Aquatic Centre re-opened last November, which saw improvements to the entrance, kiosk, storerooms, first-aid room and changerooms, but no energy efficient upgrades, according to a Shire of Mundaring spokesperson.

In its emissions reduction strategy (ERS) 2024, the shire acknowledged that community facilities such as the Bilgoman Aquatic Centre still had opportunities to improve energy efficiency and add more renewable energy.

“We have had an energy consultant detail the works required for new energy efficient electrical and gas heating upgrades,” the shire spokesperson said.

The 2024 strategy is a revision of the original ERS 2018 which had a target to reduce greenhouse gas emissions by 30

per cent by 2030 from the 2016-17 baseline.

This target was achieved in 2022-23, half the time predicted, which led the shire to set a new target of 70 per cent by 2030.

In this round of refurbishment to the centre, the spokesperson said there were no energy efficient upgrades.

In the Shire of Mundaring Council Plan 2024-2034, the solar heating and pool pumps at the Bilgoman pool were classified as a priority project.

The estimated cost for this project is \$20,000 for 2024-25 and \$280,000 for 2025-26.

“The shire will apply for grant funding under round two of the community energy upgrades fund (CEUF) program,” the spokesperson said.

Round two of the CEUF program is expected to commence in early 2025, according to the Department of Climate Change, Energy, the Environment and Water.

Henley Brook Avenue construction starts

GUANHAO CHENG

THE Henley Brook Avenue extension project’s construction is underway to improve traffic and divert commuters away from West Swan Road by creating a north/south connection.

City of Swan Mayor Tanya Richardson said the Henley Brook Avenue extension project was originally proposed due to a significant increase in traffic volume in the city’s urban growth corridor – impacting main distributor roads Drumpellier Drive and West Swan Road.

“The city’s traffic modelling suggests the extension of Henley Brook Avenue will reduce congestion along West Swan Road by creating another north-south access route,” she said.

“It will also boost traffic safety and tourism amenity in the Swan Valley, aligning with community priorities in the Swan Valley local area plan 2024.”

Calls for Park Street parking solutions (Echo News, January

24) reported residents were calling for action to make Park Street safer and more accessible.

Mrs Richardson said although the project had the potential to help alleviate some of Park Street’s traffic, that was not the goal of the extension.

“Traffic concerns along Park Street are due to developments in the area and Henley Street closure – they are not associated with this project,” she said.

“It is expected that the Henley Brook Avenue extension project will absorb traffic using Park Street and West Swan Road to travel to and from Midland or Perth’s south and east areas.”

The City of Swan’s webpage – containing a map of the project’s location – says that a comprehensive traffic noise assessment for the proposed works has been conducted and that the city will incorporate the recommended measures into the design to address noise concerns.

According to the webpage, the project is scheduled to finish in 2025-2026.

Invitation to Meet WA State Candidates for the Seat of Kalamunda



Australian Christians
Shemma Timney



Greens
Janelle Sewell



Labour
Karen Beale



Liberals
Adam Hort



Nationals
Lisa Logan

Please join us for this engaging and informative event

Thursday 20 February, 6.30 pm for 7 pm start
Mundaring Arena, Bendigo Room

The Ratepayers Associations of Mundaring Shire cordially invite you to an important event, allowing you to meet and listen to the five Candidates for the WA State Seat of Kalamunda.

This is a unique chance to hear their visions and promises firsthand, and to engage with them by asking questions.

Hosted by the Ratepayers Associations of Mundaring Shire



Join Us at your Next Local Ratepayers Meeting!

We need your membership and support to continue our efforts.

Chidlow Progress Association

Email: secretary.chidlowprogress@gmail.com

Darlington Ratepayers & Residents Association Inc

drara@darlingtonvillage.org
Phone: 0437 310 578
Next Meeting Date: 6th March
Where: Darlington Lesser Hall

Glen Forrest Residents and Ratepayers Association

Email: gfrpa@hotmail.com
Phone: 0413 32 0921

Hovea Residents & Ratepayers Association Inc.

Email: kt.ross@gmail.com
Next Meeting Date: 4th March, 7.30pm
Where: Parkerville Pavilion

Mahogany Creek Progress Association

Email: secretary@mahoganycreek.com.au
Phone: 0401679827
Where: Mahogany Creek Hall

Mount Helena Residents and Ratepayers Progress Association

Email: mthelenaratepayers@yahoo.com
Phone: 0417778454
Next Meeting Date: March 23rd, 6.30pm
Where: Elsie Austin Pavilion

Mundaring Residents and Ratepayers Progress Association

Email: mrrpa.wa@gmail.com
Phone: 0499444674
Next Meeting Date: 3rd April, 7.30pm
Where: The Hub of the Hills

Sawyers Valley Ratepayers and Residents Association

Email: sawyersvalley@gmail.com
Phone: 043 957 237
Next Meeting Date: 5th May, 7.30pm
Where: Sawyers Valley Hall

Stoneville and Parkerville Progress Association Inc.

Email: villes.progress.assoc@gmail.com
Phone: 0422491016
Where: Parkerville Pavilion

KALAMUNDA ELECTORAL BOUNDARIES

Forrestfield Football Club is turning 50



Members of the 2018 Forrestfield Football Club.

JOIN Forrestfield Football Club (FFC) on March 15 as they celebrate their 50th anniversary with a family-friendly fun from 12pm to 4.30pm at John Reid Oval, followed by a dinner from 6.30pm to 11.30pm at Steel Blue Oval.

The club has come a long way since 1975 when Forrestfield Primary School principal Ken Waters was approached by a coordinator of the local football competition asking him if he could put together a team because of the uneven number of teams competing.

Mr Waters gathered a group of U13 boys who were keen to play, and the rest was history.

That year, a 13-year-old Tony Cale set a milestone when he scored the club's very first goal.

Since then, the club has continued to grow and now has a total of 11 teams competing, from Year 3 to sen-

ior-aged players.

Forrestfield Football Club secretary Lesley Boyd said the club had grown from a single team in the Swans competition to a vibrant community of players and supporters.

Festivities kick off at midday with a family-friendly sausage sizzle and activities for the kids including waterslides, fairy floss and snow cones.

Later in the afternoon, a cake-cutting ceremony will be accompanied by guest speakers who will share the club's rich history.

The celebrations will end with a dinner at the Swan Districts Steel Blue Oval.

All past players, members, their families and local residents are welcome to join as the club celebrates the half century milestone.

Tickets to the evening dinner event can be purchased at forrestfieldfc.pfl.club/public/schedule/events

Historic Swan SES stories sought



SES history records officer Melanie Rybka is calling for anyone with information about the Swan SES.

AFTER compiling the history of the Swan SES last year for its 60th anniversary, Melanie Rybka was inspired to create a historical documentary told through the stories of the organisation's members.

"I developed a deep respect for the past members and their sacrifices," she said.

Miss Rybka hopes the documentary will recognise those currently in the SES and also bring in new members or reunite old ones.

"I hope to continue their legacy by telling their stories and honour the sacrifices they made," she said.

"The real-life people who get out of bed at 2am in the pouring rain to help their community.

"The people who pack a bag and travel across the country to assist other communities in need.

"People who give up time with their families

to train."

Throughout her life, Miss Rybka has been involved with the organisation in one way or another.

Today, she is the historical records officer for the organisation, but she is also the daughter of two former members who met at the Swan SES.

"Hearing them (her parents) tell their stories and the way it takes them back has driven me to capture the stories behind the ordinary people who do so much at Swan SES," Miss Rybka said.

Miss Rybka is calling for previous Swan SES members or anyone who has photos or documentation related to the organisation.

To get in touch with Miss Rybka, email tory@swanses.org.au or visit the Swan SES Facebook page.

Caversham Valley PS upgrade

A MAJOR upgrade at Caversham Valley Primary School was completed in time for the start of term one, according to the state government.

On January 30 Education Minister Tony Buti said the new \$12.3 million two-storey teaching block included 10 new classrooms – providing space for an additional 300 students.

Dr Buti said included in the new two-storey teaching block was a science classroom, staff offices, internal activity areas, toilets and storage.

The upgrade also adds a new landscaped courtyard and adjoining play area for students.

The playground is a bespoke design, especially created to fit the surroundings, including the local native flora and fauna.

"We are working hard to ensure all families in

Western Australia have access to the best school facilities," he said.

"It is fantastic to see this state-of-the-art teaching block completed on schedule, ready for an exciting year of teaching and learning ahead.

"Caversham Valley Primary School is a popular choice for local families and this new double-storey classroom block will accommodate the growing enrolments."

Midland MLA Michelle Roberts said the school was one she had championed from the beginning and was thrilled to see the major upgrade delivered.

"The new classroom block will ensure families in Caversham continue to have access to a great local school close to home," she said.

Make life easier on everyone

Discover **JUST PET DOORS**



Neat fitting, secure and smart, these tough, UV stabilised polycarbonate pet doors are the answer to everyone's dreams.

Visit our website and use the simple size guide to find the perfect pet door.

• Shower Screens • Custom mirrors
• 24hr Emergency glass repair
• Shopfronts & Offices

JUST GLASS
SINCE 1980

Glen Howard is your Glass Fitting and Repair Specialist. Servicing the Perth and Hills areas for just over 40 years!

Mandurah 9520 8610 | Metro 9250 5580

JUST PET DOORS
www.justpetdoors.com.au

JUST GLASS
SINCE 1980
www.justglass.com.au



Kalamunda residents lining up outside council chambers to secure a spot at the meeting.

Heath Road restaurant and car wash opposition grows

GUANHAO CHENG

ABOUT 150 residents gathered at Kalamunda Uniting Church to oppose the development proposal for a McDonald's and car wash being built at the intersection of Heath and Canning roads.

The February 1 meeting was held in the church neighbouring the site of the new proposed development.

Greens Kalamunda electorate candidate Janelle Sewell attended the meeting and said the attendees filled up the whole hall and were concerned about a range of issues.

"(Canning Court residents) expressed they went there to live a healthy life and stay connected, and now they can't sit outside without hearing, 'you want fries with that?'" she said.

"The proximity to the residential area is very unreasonable to them.

"It's a very vulnerable group and it does seem a bit unfair they have to deal with something at this scale."

Fast food and car wash proposal for Kalamunda (Echo News, January 24) reported that residents had concerns about the traffic, impact to local amenity, mature tree clearing and its proximity to residential areas and schools.

The matter was brought to the Kalamunda annual general meeting of electors on February 4.

Echo News attended the meeting at Kalamunda council chambers which had a line of residents waiting to find a seat for the evening.

During the meeting, City of Kalamunda development services director Nathan Ritchie said the process of the development was in the engagement phase.

"We have until February 14 to receive your submissions, and I encourage you to put those submissions forward," he said.

Mr Ritchie encouraged submissions to be made on planning grounds, and less on opinion-based or emotive grounds.

"They hold greater rigor in the (development consideration) process than individual opinions," he said.

"So, if I was to help encourage you to make those submissions, I would guide you towards that.

"I would encourage you to put those submissions forward through the Kalamunda Engage portal, where they'll be picked up and considered as part of the process.

"We will make reference to (petitions submitted).

"Today, I think at last count, we've received about 500-odd submissions from the public at this point in time.

"We're aware of the petition out there with over 1000 signatures, and that will form part of the assessment process against all other justified planning considerations."

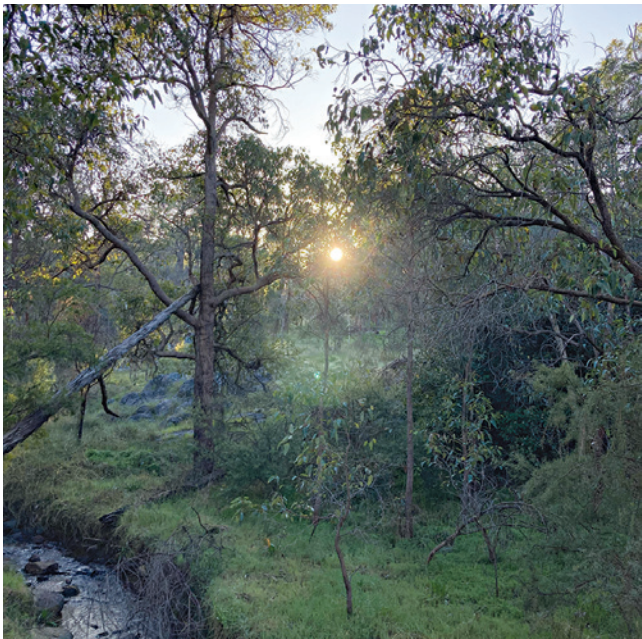
Kalamunda resident Rachel Davison moved the motion to bring awareness to the City of Kalamunda that there was widespread community dismay and disapproval for the McDonald's and car wash development.

The motion was seconded by resident Michaela Simondson who called for planning shortfalls to be addressed in a report to the development assessment panel, and for resident concerns to be voiced to the panel in their report.

The motion was carried unanimously with applause pealing through the chambers after the motions were spoken and after each speech given by residents, including councillor David Modolo.

A community rally is planned to be held at Stirk Park this Saturday at 10am where the concerns will be further discussed with the support of the Cancer Council WA.

Kalamunda secures hiking funding boost



Kalamunda's hiking is for every body program was granted \$19,488 to promote accessibility to hiking.

CITY of Kalamunda will receive a \$19,488 funding boost to promote the city's 'hiking is for every body' program in collaboration with Off the Beaten Track WA.

"The funding will be used to deliver tailored, inclusive hiking experiences, ensuring a safe and supportive environment where participants can enjoy nature, build confidence, and improve wellbeing," Mayor Margaret Thomas said.

As hiking grows in popularity across the Perth Hills, Ms Thomas said it has attracted a diverse range of participants.

The city hopes the new funding will develop new opportunities for participation, enhance skill development, and build the capacity of hiking leaders.

The funding is part of the state government's \$252,168 WA hiking participation grants program which involves 12 projects.

"These outdoor activities are much more than just great fun and building physical fitness and we should not underestimate the importance of the benefits of being outdoors," Sport and Recreation Minister David Templeman said.

West Swan makes million dollar club

WEST Swan was one of the 37 suburbs to make Perth's million dollar club in 2024, according to the Real Estate Institute of Western Australia.

The City of Swan suburb with a 2024 median house price of \$1.16 million made a return to the list after exiting in previous years.

The other eastern and hills suburbs to join or return to the list included Darlington with a 2024 median house price of \$1.13m, Hovea (\$1.1m), Carmel (\$1.1m), Gooseberry Hill (\$1.05m), Bickley (\$1.02m), Guildford (\$1.02m), Millendon (\$1.01m) and The Vines (\$1.01m).

Perth now has 100 suburbs with a median house sale price of \$1m.

REIWA chief executive officer Cath Hart said strong price growth last year was behind the significant increase.

"In a typical year, only a handful of suburbs would see their median house sale price rise above \$1m," she said.

"But in 2024 the Perth property market recorded some of the highest growth since the 2006-07 boom, with annual median house sale price growth peaking at 24.8 per cent in October.

"As a result, 37 suburbs reached

the million dollar mark last year – this compares with just eight suburbs in 2023.

"The previous record for suburbs added to the million dollar club during a calendar year was 14, which was set in 2006."

No suburbs on the 2023 list saw their median house sale price fall below \$1m in 2024.

Of the 37 suburbs that joined the million dollar club West Swan was one of three to return to the list – the other two were Highgate and Burswood.

"Prices fluctuate from year to year, depending on what is selling in that time period and we regularly see suburbs around the million dollar mark come and go from the list," Ms Hart said.

West Perth was the top performer among the new entrants, with its median house sale price increasing 48.9 per cent to \$1,340,000.

Riverton was the next best performing newcomer, with 39.7 per cent annual growth, followed by Burswood (up 39.6 per cent), Guildford (up 39.3 per cent) and Highgate (up 39.0 per cent).

Perth's most expensive sale in 2024 was 177 Wellington Street, Mosman Park, which sold in May for \$25m.

ADVERTISEMENT



Introducing
Mike MATCH
LIBERAL FOR MIDLAND



IT'S TIME FOR A CHANGE
WA DESERVES BETTER

I'm Mike Match, your local Liberal for Midland.

I love everything about this area, from the banks of the Swan River to our business hubs – this area is a great place to live, work and raise a family.

Midland holds a special place in my heart. My café, Crooked Spire, is more than a coffee shop – it's a hub for creativity and community, employing 25 local staff and bringing people together to share ideas, build relationships, and support one another.

I'm also a proud parent to four incredible homegrown kids, and my wife and I have opened our hearts and home to three foster children. Being foster carers has been one of the most rewarding experiences of our lives, deepening our passion for advocating for children in need and the extraordinary families who support them.

As President of the Swan Chamber of Commerce, I've fought for small businesses, advocated for job creation, and helped strengthen our local economy. The Chamber is making a lasting impact on the community by championing local businesses and creating opportunities for growth. I know the challenges businesses face because I've lived them, and I'm committed to making it easier for local enterprises to thrive.

As a member of the Liberal team, I'm fighting to fix our hospitals, crack down on crime, lower living costs and build more homes.

I have the energy and experience to represent Midland in State Parliament.



Let's work together to build a stronger and safer Midland.



0423 083 309 | mike.match@walliberal.org.au | mikematch.com.au

Mike4Midland | Mike4Midland | PO Box, 5010 Centrepoin Midland WA 6056

Authorised by S. Morgan, Liberal Party, 2/12 Parliament Place, West Perth WA 6005.



Discover our digital edition online

www.echonepaper.com.au

Youth crisis transitional housing boost

GUANHAO CHENG

THE state government has announced an injection of more than \$423,000 into Midland's Indigo Junction to help pay for electrical infrastructure costs.

The amount will be granted as part of the \$80 million infrastructure development fund to boost housing supply.

A DPLH document shows Indigo Junction as a successful applicant for the funding and the money would be used to install a distribution transformer to support delivery of the new building.

The new building's journey started in 2023 when Indigo Junction secured \$5.67m under the state government's social housing economic recovery package to construct a new youth crisis and transitional accommodation service.

Last year, Indigo Junction received \$5m to fully refurbish the current six-bed youth house by connecting the existing building with a new landmark building to be constructed next door, as reported in *Indigo Junction receives \$5m grant for two major projects* (Echo News, April 24, 2024).

Indigo Junction chief executive officer Sharon Gough said in May last year, as reported in *Indigo Junction break cycle of disadvantage* (Echo News, May 3, 2024), that a further \$4m of funding would help realise the vision of a new landmark housing facility.

The construction of the new building would combine with refurbishment of existing facilities to provide 36 new housing availabilities for young people.

Ms Gough said all going well, the new service in the landmark building would be operational by August this year.

The funds will help with costs for essential water, electricity, and sewerage.



Kalamunda's tree policy response a wakeup call

GUANHAO CHENG

KALAMUNDA's tree retention policy, which was scrapped in 2024, was back in discussion as a motion was moved to adopt WALGA's tree retention model at the annual general electors meeting.

Kalamunda resident Michelle Bunn moved to adopt the WA Local Government Association's (WALGA) tree canopy protection model in a motion at the meeting.

"Almost 12 months ago, six of the nine councillors voted to revoke the city's local planning policy, LPP 33 – tree retention," she said.

"This policy had been developed over at least three years of extensive consultation with rate payers, business owners, industry representatives, and other government agencies.

The tree retention policy was introduced in December 2022 and was in place for a little over a year before being scrapped as reported in *Applause as Kalamunda bins tree retention policy* (Echo News, March 1, 2024).

Dr Bunn said several deputies on the night the tree retention policy was scrapped expressed concerns about the impact of revocation.

"And in response, councillors highlighted that trees would still be protected as 'works' under the existing planning framework," she said.

"Councillors assured the meeting they remained committed to protecting trees, and that the policy would be replaced quickly because WALGA was, and I quote, 'finalising a template policy which we can implement within weeks'.

"WALGA's tree retention model was finalised just a couple of weeks later.

"I checked with WALGA last week – 10 local government authorities have already adopted it or are in the process of doing so.

"And yet, here we are tonight in Kalamunda, our supposed home in the forest not weeks later, but almost a year and no action has been taken to fulfil council's promise to adopt WALGA's tree protection model."

Dr Bunn said the existing city strategy relied on the single sentence direction of appli-

cations for development approval to consider "whether any trees or other vegetation on the land should be preserved".

"I really pity the staff who have to use this one sentence to undertake the process when the extensive guidelines they had in LPP 33 were considered to be inadequate," she said.

"But of course, in addition to these state regulations, the city has its own strategies to assist in considering tree protection factors."

Dr Bunn said the annual report's strategies referred to LPP 33 but was confused how the strategies could be effective in maintaining environmental standards when they relied on a city policy that no longer existed.

"So, I can only conclude it's obvious that the city's remaining tools for tree retention and decision-making are inadequate.

"Tonight, I call on you to honour your promise and therefore I move that the Kalamunda city council instructs the CEO to immediately take action to adopt WALGA's tree retention model with the intent for it to go before council by June 24, 2025."

Fellow resident Janelle Sewell seconded the motion and it was carried unanimously.

MOUTHGUARDS help prevent INJURIES



- ✓ New full dentures & partial dentures
- ✓ New implant retained over dentures
- ✓ Denture repairs & relines
- ✓ Sports mouthguards

DENTAL PROSTHETISTS



MALCOLM J McARTHUR



RAYNEE McARTHUR

Phone
9250 1733
for an appointment



SHOP 4, 16 THE AVENUE, MIDLAND
www.foothillsdenture.com.au

We also deal with Veterans' Affairs and all health funds through HICAPS |



Member for Hasluck Tania Lawrence, deputy Premier and West Swan MLA Rita Saffioti, City of Swan Mayor Tanya Richardson, Labor candidate Michelle Maynard and Member for East Metro Region Lorna Harper.

First sod turned for Swan Active's Ellenbrook aquatic and rec centre

LAST weekend the first sod was turned at the \$108 million Swan Active Ellenbrook aquatic and recreational site expected to be complete in 2027.

Land for the site has been provided to the City of Swan by the state government, allowing the city to build the facility in a prime location and to the size required to support future expansion of the centre.

On the same day as the sod-turning, the city hosted its inaugural Ellenbrook Inflatable Day event which brought fun and celebration to the rapidly growing community while they wait for the construction of the leisure facility.

It was all smiles as the Swan community enjoyed water activities including inflatable waterslides, food trucks, roving entertainment, and a dunk tank.

City of Swan Mayor Tanya Richardson instigated the event and said that the community deserved to celebrate the delivery of large-scale and community-driven projects in the area.

"We're hitting some major project milestones, especially with the sod turning kicking off construction of Swan Active Ellenbrook.

"Ellenbrook is home to one of our fastest-growing populations and it is truly rewarding to activate this area for the thriving community."

Deputy Premier and West Swan MLA Rita Saffioti said she was thrilled to see the start of construction at Swan Active Ellenbrook.

"We're delivering on our promises for the people of Ellenbrook and soon they will have the regional-level leisure facility they deserve, in the heart of a well-connected precinct," she said.

Member for Hasluck Tania Lawrence said the start of works at Swan Active Ellenbrook signals a new era for the community.

"We all know that Ellenbrook has waited a long time for a pool. It is fantastic to now see the ground being broken on this project," she said.

"The state and federal governments have provided \$42m to get this done and your local MPs Rita Saffioti MLA, Jessica Shaw MLA and I, are committed to delivering modern aquatic and recreation facilities to Ellenbrook, working with the City of Swan."

The federal government has committed \$30m with the state government committing a further \$12m.



Engage with us



Mayor's message

Kaya everyone,

Thank you to our community for engaging with us at the Annual Electors' Meeting on February 3.

It was a great turnout in-person and online, with an array of motions and questions submitted to Council for consideration.

It was a positive start to what I am sure will be a productive year ahead of collaboration between the community and Council to ensure Swan continues to thrive.

Speaking of collaboration, we are reviewing our Strategic Community Plan and inviting all community members to share your vision for the City over the next 10 years.

Swan, it's time – we're listening.

What matters most to you? What do you love about our community, and what could be improved? We want to ensure that our plans reflect the aspirations and priorities of those who call the City home.

Community consultation starts on February 17, 2025 so visit our Swan Engage website to provide your feedback online and look out for us in the community at events and workshops.

We're also reviewing our Innovate Reconciliation Action Plan, which outlines practical actions that support reconciliation efforts within the organisation and our communities.

I encourage you to share your aspirations and ideas for this important document so we can work towards a more reconciled Swan and the wider community.

There are more details in the Engage with us section.

Green thumbs rejoice – our Free Trees and Plants Giveaway is back. Go to www.swan.wa.gov.au/free-trees from Monday, February 10, 2025 to apply for your free tree or plant and let's grow a greener community, together.



Tanya Richardson
Mayor, City of Swan



Draft Reconciliation Action Plan (RAP)

The City endorsed our first Innovate RAP in 2022, delivering great initiatives for our staff, community, and stakeholders. It allowed us to listen, engage and connect with Aboriginal and Torres Strait Islander peoples, including our local Noongar communities. This year, we will develop our next RAP alongside our community and key stakeholders, showcasing our achievements

and identifying new actions for the next two years. We invite you to join us in this important conversation to ensure equitable opportunities for our Aboriginal and Torres Strait Islander communities.

www.swanengage.swan.wa.gov.au/draft-reconciliation-action-plan



Community and Business Perceptions Survey

The City's annual Community and Business Perceptions Survey is now open. We want to know how you feel about things like crime prevention, green spaces, recreation, lighting and waste management if you're a resident. If you're a business owner, how are we tracking when it comes to delivering support and training, managing

parking and preventing crime? Whether you are a resident or business owner, this is your opportunity to complete the survey that is relevant to you and provide valuable feedback on our facilities, services and events. The survey closes on February 14, 2025 for residents and ratepayers and February 21, 2025 for business owners. Independent consultant Catalyse is managing the survey on the City's behalf and all data will remain secure and confidential.

www.swan.wa.gov.au/survey2025

What's happening



Japanese for beginners

Are you interested in Japanese language and culture? Join us in learning the basics of Japanese to communicate with Japanese people or when you travel to Japan. Come to Beechboro Public Library every Wednesday until March 5. Bookings essential. Call **(08) 9207 8585**.



Rock 'n' Roll quiz night

Test your knowledge of rock and pop hits from 5.30-7pm on Wednesday, February 12, at Old Midland Courthouse at a Valentine's-themed rock 'n' roll quiz night. Tony Papa-Adams of Perth blues and soul outfit Papa Peet will host the event, which will be filled with fun, music, and a few prizes. Call **(08) 9267 9020**.



Tuning in to kids

Explore ways parents can help their children develop emotional intelligence and increase their emotional connection with a six-session program at Dayton Family Hub. The program starts on Thursday, February 20, 10am-12noon and is best suited for parents and carers of children aged three-10 years. Bookings essential. Call **(08) 9290 6827**.



Friday's at Locale - Lunar New Year

Experience the wonder of Lunar New Year and celebrate the occasion with us on Friday, February 21 from 5.30-8pm at LoCale, 37 The Crescent, Midland. This free family-friendly event will feature performances from local cultural groups and children's activities with an early story time to kick off the event.

Visit our online event calendar for a full list of upcoming events in the City of Swan.
Go to www.swan.wa.gov.au/events

ADVERTISING FEATURE

Valentine's Day



Valentine's Day, also called St. Valentine's Day, holiday (February 14) when lovers express their affection with greetings and gifts.

Formal messages, or valentines, appeared in the 1500s, and by the late 1700s commercially printed cards were being used.

The first commercial valentines in the United States were printed in the mid-1800s. Valentines commonly depict Cupid, the Roman god of love, along with hearts, traditionally the seat of emotion.

Traditional gifts include candy and flowers, particularly red roses, a symbol of beauty and love.

BRITANNICA

Spoil Yourself with Elegance and Style @ Carmen Jewellers this Valentine's Day

Have you considered what would be that perfect accessory to elevate your look this Valentine's Day.

At Carmen Jewellers, we're sure you will find what you're searching for and there's nothing quite like a personal touch when you're looking for that something special.

Our jewellery specialists have over 50 years of experience and we are here to help you create that unique design to celebrate any special occasion.

Carmen Jewellers are always updating what is in store with new and exciting pieces of timeless elegance that is exclusive to our 4 stores.

Being an independent jeweller and having a deep understanding of all jewellery related products, we pride ourselves on providing excellent service to our customers.

We offer exquisite, handcrafted pieces, bespoke designs, and an exclusive collection of loose diamonds as well as a beautiful range of quality diamond jewellery.

Carmen Jewellers can also provide free insurance quotes. We provide in-store valuation and independently value by an expert jewellery valuer.



Relax, Rejuvenate, and Reconnect this Valentines Day at Amaroo Retreat & Spa!

Join us for a romantic dining experience at The Lounge at Amaroo, where every bite is a celebration of flavour and freshness.

Indulge in an unforgettable 6-course degustation menu curated by our Michelin-starred chef, set in the breathtaking serenity of Amaroo Retreat & Spa. Savour the finest ingredients sourced locally and prepared with passion by our talented culinary team. From tantalising entrees to mouthwatering mains and delightful desserts.

Whether you choose lunch or dinner, you'll be treated to live music and an intimate dining experience that's sure to sweep your loved one off their feet.

Experience our serene surroundings and renowned personalized service. Pair your meal with one of our luxurious day spa treatments to make it a full day of indulgence and connection.

From invigorating massages, refreshing facials to IV Nutrient Therapy, our professional team are dedicated to providing you with an oasis of tranquility and bliss.

Gift vouchers are available for our five star accommodation, dining, and day spa.



AMAROO RETREAT & SPA PRESENTS

Dine with your Valentine

14TH FEBRUARY 2025




VALENTINE'S DAY MENU

Amuse Bouche
BURNT ONION & GRUYERE BEIGNET (V)

Kingfish Crudo
PINK GRAPEFRUIT, SALSA VERDE (GF)

Tempura Chicken Wing
PRAWN MOUSSE, LIME AIOLI (GF)

Duck Breast
BEETROOT PAVE, SPICED PLUM (GF)

Pre Dessert
'LEMON MERINGUE PIE' (GF V VG)

Dessert
POACHED NECTARINE, ROSE MILLEFEUILLE PISTACHIO, (GF V VG)




\$130 ea

*Subject to change
*Dietary requirement available
Must be requested at time of booking

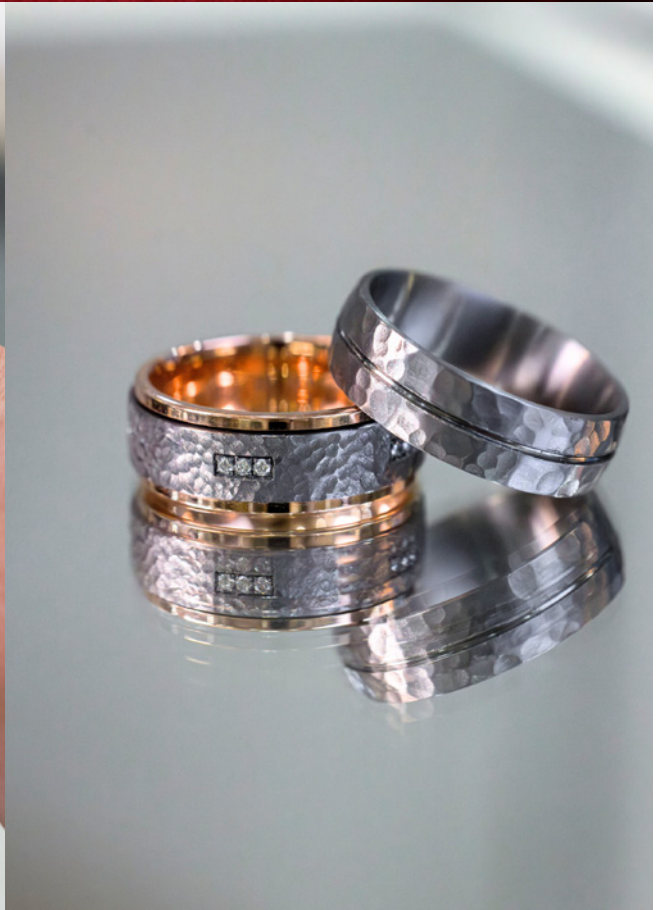
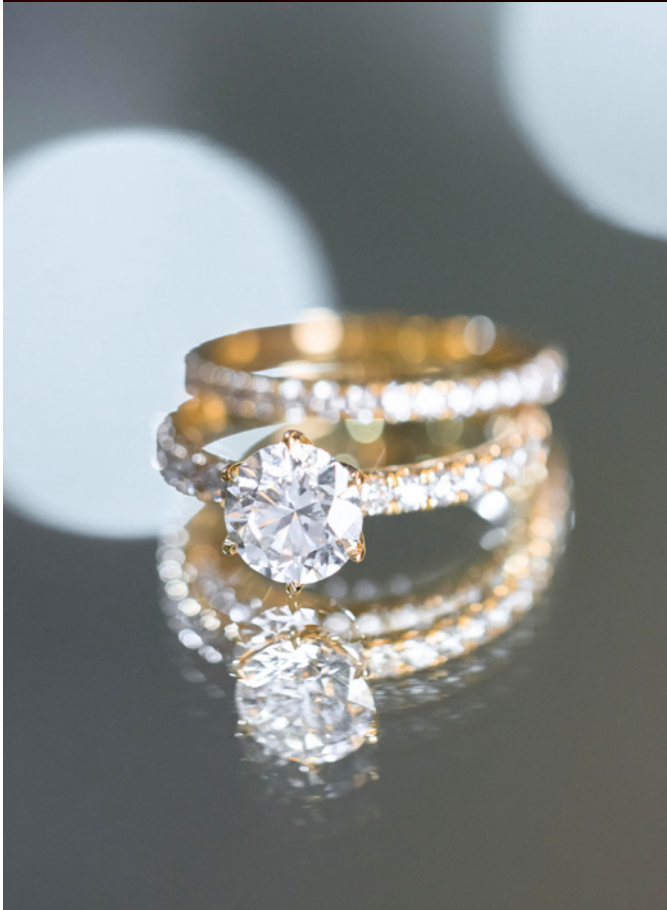
Valentine's Day Gift Vouchers are available now for our 5 Star Chalets, Day Spa and Kapurn:Skin
1200 Alison St, Mt Helena | 08 6244 4800
<https://thelounge.amarootretreat.com.au/book-a-table/>



Carmen
jewellers


PINNACLE
JEWELLERS

HAPPY
Valentine's Day



UP TO
20%

OFF ENGAGEMENT RINGS, WEDDING
BANDS
AND TENNIS BRACELETS



SHOP
ONLINE

TERMS & CONDITIONS APPLY

UP TO
10%

OFF INFINITY MENS
WEDDING RINGS

LAKESIDE JOONDALUP
JOONDALUP@CARMENJEWELLERS.COM
08 6556 0972

MIDLAND GATE
MIDLAND@CARMENJEWELLERS.COM
08 9274 1080

MIRRABOOKA SQUARE
MIRRABOOKA@CARMENJEWELLERS.COM
08 9349 7861

KARRINYUP S/C
KARRINYUP@PINNACLEJEWELLERS.COM
08 9466 2699

ADVERTISING FEATURE

Support Local



MacFarlane Generators supplying power anywhere anytime...

At MacFarlane Generators, we are committed to delivering reliable, innovative backup power solutions that are tailored to meet the diverse needs of our customers.

Since 1949, we have provided high-quality generator products, spare parts, and flexible hire sales options, all backed by exceptional customer service and technical expertise.

Through continuous improvement and a dedication to excellence, we empower businesses, communities,

and individuals with the energy they need, anywhere, anytime.

Every solution we offer—whether it's for purchase, spare parts, or rental—is designed with efficiency, durability, and reliability at its core.

With offices in 4 States and a team of skilled engineers, we provide turnkey generator solutions to meet a wide range of needs.

We aim to be the trusted partner for delivering power, anywhere, anytime.



Expanding life skills @ HODA

THE Helen O'Grady Drama Academy is proud to declare that their self-development drama programme has been preparing children and teens for life since 1979 – still prevalent in guiding our youth of today!

The prime aim of their International Programme is to give children ongoing confidence and skill in verbal communication, a vital ability in today's fast changing world of technology in which our children are now immersed.

Learning to be able to communicate effectively with others allows children to find their own path through anxiety, school pressures, friendships, family changes and navigating challenges with a positive mindset.

Children love our classes and parents love the results says Helen O'Grady Drama Academy principal Merylena Sulak.

"We are very proud of our programme which covers a wide variety of skills that incorporate speech training, creative movement, im-

provisation, script work, performance techniques and much more," she said.

"Drama not only gives children and teenagers an opportunity to express themselves in a fun, safe environment but also enables them to practise everyday life skills such as leadership, discussion and negotiation."

Weekly classes are held for 5 to 8-year-olds, 9 to 12-year-olds, and 12 to 18-year-olds.

There are five studios operating in the eastern suburbs area: Swan View, Kalamunda, Guildford Homeschool, Mundaring and Dianella.

Enrolments are now open for Term 1, 2025. Although many of their classes fill very quickly before the term has even started!

They also offer school clubs and incursions in liaison with your school Principal or P&C. Call Merylena on 9378 4332 or 0490 808 206, visit www.helenogrady.net.au or email merylena.sulak@helenogrady.net.au for more information.



DON'T WAIT FOR THE NEXT POWER OUTAGE

Protect your Family, Business & Investment.
Choose MacFarlane for your next Generator.



FREE, No Obligation Quote
Call 0418 931 718

SAVE \$400
ON PRE-DELIVERY SERVICE!

WORKSHOP PREPARED & TESTED

In today's world, power outages are becoming more frequent and unpredictable due to unreliable power grids, falling trees, and extreme weather events. These disruptions can lead to significant downtime for residential, businesses, data loss, and even safety hazards in critical environments.

MacFarlane Generators offer a reliable solution to ensure continuous power delivery, no matter what. Our generators are designed to kick in during any power interruption, providing uninterrupted electricity to support your operations. Whether it's a storm, fallen trees, or an overloaded grid, our generators keep your systems running smoothly.

By investing in MacFarlane Generators, you're securing your business from power-related risks, improving operational reliability, and safeguarding critical systems. With advanced technology and robust performance, we provide peace of mind, knowing you'll have consistent, dependable power when you need it most.



- Quality and Trusted Brands
- Great Backup Service by Experienced Staff
- Cost Effective Opportunities
- Pre-Delivered - Ready for Installation
- 75 years in the Generator Industry



SALES | PARTS | SERVICE | HIRE | NEW | USED

www.macfarlanegenerators.com.au | 1300 MAC GEN |

PERTH: 26 Allambi Way, South Yunderup WA 6208



Empowering women at HBF Physio Midland

HBF Physio Midland pelvic health physiotherapist Danica Fitzgerald is dedicated to helping women of all ages regain their confidence to safely return to exercise and daily activities.

Backed by her Master's degree in pelvic health, she has special interests in pelvic pain, prolapse, incontinence, pregnancy

related pelvic girdle pain and antenatal and postnatal education and rehabilitation.

Having personally experienced the challenges of pelvic health following the birth of her first child, Danica understands the gaps in support many women face. This experience fuels her commitment to providing compassionate, evidence-based physiother-

apy care together with the multi-disciplined team.

"Women will often put up with pelvic health concerns because they think it's 'normal'. My role as a pelvic health physio is to educate them that while these issues are common, they don't have to accept them as a part of life."

HBF Physio Midland also offers general physiotherapy services alongside gym rehabilitation, Clinical Pilates, exercise physiology, golf and vestibular physiotherapy.

Whether clients are an HBF member, with another health fund or don't hold health cover, everyone is welcome at HBF Physio Midland. To book call 6118 7347.



Kids LOVE Drama




BOOST CONFIDENCE

LEARN LIFE SKILLS

INCREASE SELF ESTEEM

IMPROVE COMMUNICATION

DEVELOP DRAMA SKILLS

31ST BELMONT & WESTERN AUSTRALIAN SMALL BUSINESS AWARDS 2024 WINNER

Dianella • Kalamunda • Mundaring • Swan View • Guildford Homeschool

LOWER PRIMARY 5-8 YEARS | UPPER PRIMARY 9-12 YEARS
YOUTH 12-17 YEARS

CALL OR TEXT FOR MORE INFORMATION
9378 4332 | 0490 808 206

merylena.sulak@helenogrady.net.au | www.helenogrady.net.au

Eligible HBF members get a no gap initial consult* at HBF Physio.

- Physiotherapy
- Clinical Pilates
- Dry Needling
- Women's & Men's Health Physiotherapy

HBF Physio Midland



*For eligible HBF members with physiotherapy extras at HBF Physio. Offer covers an initial general consultation. Not available in conjunction with any other offer. Limit of one per person per calendar year. Waiting periods and other exclusions apply. Learn more at hbfphysio.com.au

ECHO Mind Boggler Crossword 1203

Your local Gig Guide

Thurs February 6

Hemingway & Co
Big Al & band
From 6.30pm.
6/7095 Great Eastern
Highway Mundaring

Fri February 7

Settlers House York
The Jukes of York
From 6pm
Avon Terrace York

Bassendean Hotel
DJ Roller
5pm-Late. Free.
25 Old Perth Road
Bassendean

Mahogany Inn & Distillery
Damien Wicks
6pm-9pm. Free.
4260 Great Eastern
Hwy
Mahogany Creek

Parkerville Tavern
Table for Two
6pm-9pm.
Free.
6 Owen road
Parkerville

Lyric's Bar
Laneway Bar
Donny Goodman Duo
From 7pm. Free.
22 Lyric Lane Maylands

Sat February 8

Mahogany Inn & Distillery
Rhay Rom
6pm-9pm. Free.
4260 Great Eastern
Hwy Mahogany Creek

Bassendean Hotel
Jammin with Charlie
Duo
8pm-Late. Free.
25 Old Perth Road
Bassendean

Hemingway & Co
Pick Me Ups
From 7.30pm.
6/7095 Great Eastern
Highway Mundaring

Parkerville Tavern
Travis Caudle
From 6pm. Free.
6 Owen Road
Parkerville

Sat Feb 12 cont.

Mt Helena Tavern
Bronte & Josh
From 6pm.
900 Keane Street
Mount Helena

Lyric's Bar
Laneway Bar
Jere Sosa Duo
From 7pm. Free.
22 Lyric Lane Maylands

Sun February 9

Bassendean Hotel
Phoenix
From 2pm. Free.
25 Old Perth Road
Bassendean

Parkerville Tavern
Dr Bogus
From 4pm. Free.
6 Owen Road
Parkerville

Mahogany Inn & Distillery
Bill Chidgzy with the
Longshot Trio
4pm-7pm. Free
4260 Great Eastern
Hwy Mahogany Creek

Childlow Tavern
Live Music
12.30pm - 3.30pm.
Free.
4 Thomas St Childlow

Lyric's Bar
Laneway Bar
Empire Blues Duo
From 5pm. Free.22
Lyric Lane Maylands

Tues February 11

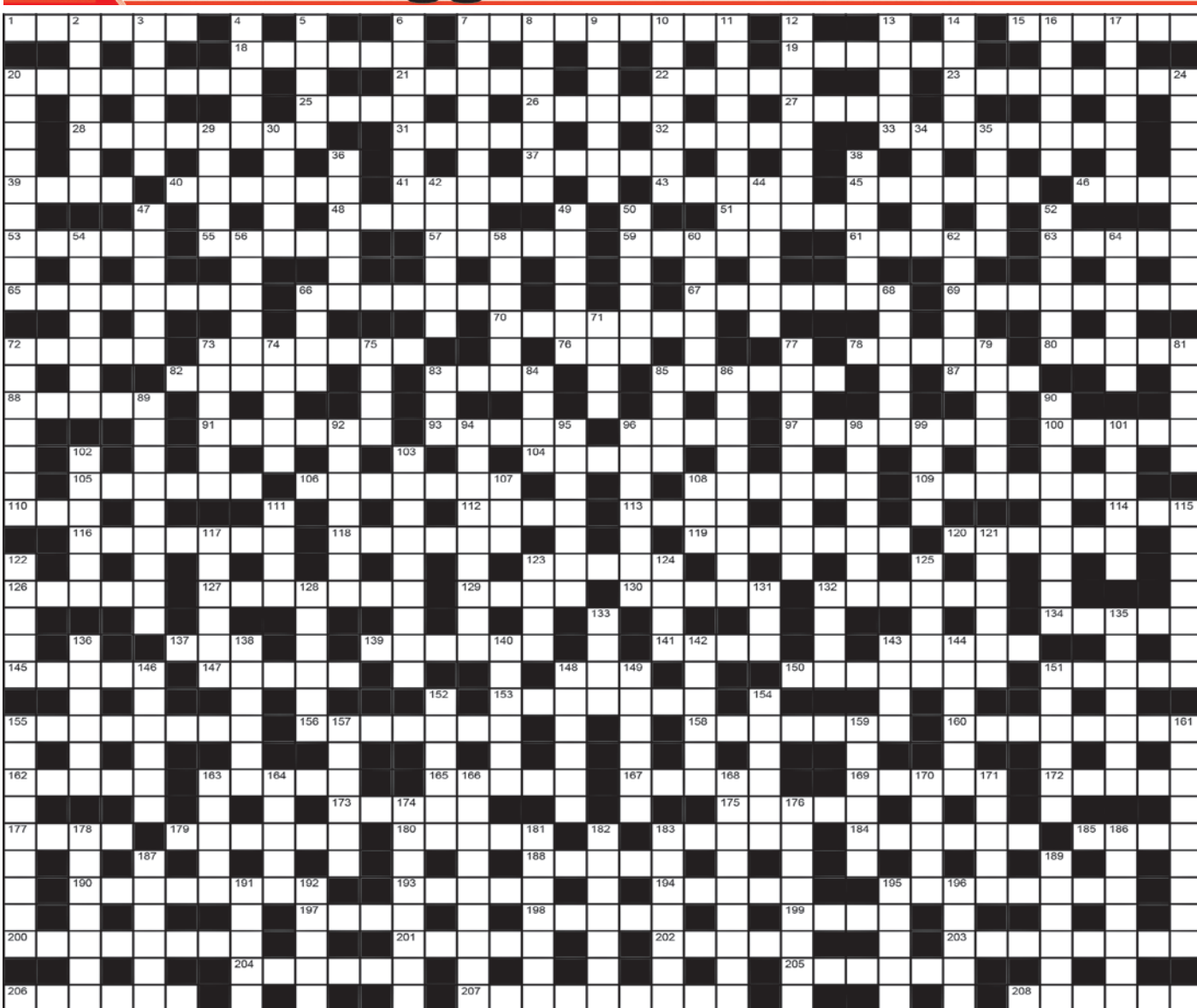
Hemingway & Co
Jazz Tuesday
From 6pm.
6/7095 Great Eastern
Highway Mundaring

Wed February 12

Childlow Tavern
Muso Jam Night
7.30pm till late.
Free.
4 Thomas St Childlow

Thurs February 13

Hemingway & Co
Blues Thursday
From 6.30pm.
6/7095 Great Eastern
Highway Mundaring



- ACROSS**
- 1 Favourable aspect
 - 7 Back part
 - 15 Good-humoured rallery
 - 18 On fire
 - 19 Betting person
 - 20 Horse attendant
 - 21 A garret
 - 22 To tidy
 - 23 Water crops
 - 25 Curved bones
 - 26 Japanese verse form
 - 27 A killer whale
 - 28 Large cleft
 - 31 Stratosphere substance
 - 32 Parts of ears
 - 33 Headlong rush
 - 37 Levels
 - 39 Former liquid measure
 - 40 Uncouth
 - 41 Land expanses
 - 43 A bird
 - 45 Right of entry
 - 46 A dam in river
 - 48 Of the sun
 - 51 Back of boat
 - 53 Tusk material
 - 55 Lure
 - 57 A firearm
 - 59 A medieval fiddle
 - 61 Face guard
 - 63 Fruit of the oak
 - 65 Types of flowers
 - 66 Make a suggestion
 - 67 A peak of the Himalayas
 - 69 Fragile
 - 70 Free of germs
 - 72 Stiff
 - 73 Hand coverings
 - 76 A slender stick
 - 78 Church musical instrument
 - 80 Christmas foliage decoration
 - 82 Fixes ills
 - 83 A graceful bird
 - 85 Busy times
 - 87 A boy
 - 88 Moves side to side
 - 91 Of Troy
 - 93 Brittle
 - 96 Illuminated sign
 - 97 Lustrous fabric
 - 100 A fur
 - 104 Oceans' motions
 - 105 Wiggle with discomfort
 - 106 Sully
 - 108 One of two
 - 109 Take back
 - 110 Distress signal
 - 112 European currency
 - 113 Amount wagered
 - 114 A hint
 - 116 Sign as permitted
 - 118 A call for more
 - 119 Military hairstyle (4,3)
 - 120 Roofed-in gallery
 - 123 A military student
 - 126 River in Hades (myth)
 - 127 A legal restriction
 - 129 Egg-shaped
 - 130 Ventured
 - 132 Compensate for
 - 134 Sharpened pole
 - 137 A gutter
 - 139 Funeral vehicle
 - 141 Tense
 - 143 Burn with water
 - 145 Plant parts
 - 147 A musical instrument
 - 148 Decorate a cake
 - 150 Male under patronage
 - 151 Omens
 - 153 Removes disguise
 - 155 Type of cigars
 - 156 Herb flavouring
 - 158 Ornamental shoulder piece
 - 160 One who tends sheep
 - 162 Pips
 - 163 Writer of fables
 - 165 Admired stereotypes
 - 167 Angers
 - 169 Money bag
 - 172 Desert haven
 - 173 Musical instrument
 - 175 A hunting cabin
 - 177 Out of shape
 - 179 Wheedle
 - 180 A minister
 - 183 Enclosing structure
 - 184 Bring back to life
 - 185 A den
 - 188 Give a speech
 - 190 Breaks in pieces
 - 193 Take an exam again
 - 194 Dodge
 - 195 Bunches
 - 197 Water
 - 198 Capsize
 - 199 Greek letter
 - 200 Saved from a wreck
 - 201 Deep moan
 - 202 Hoist up
 - 203 Road crossing
 - 204 A continent
 - 205 Turkish city
 - 206 A flowering plant
 - 207 Informal restaurant
 - 208 Young swan
 - DOWN**
 - 2 A crusader's opponent
 - 3 Twofold (Lat)
 - 4 Game of skill
 - 5 Blast of sound
 - 6 According to seasons
 - 7 Miscellaneous mixture
 - 8 Small bags
 - 9 Died out
 - 10 Sudden inclination to act
 - 11 Pay back
 - 12 Completely contrary
 - 13 Book of maps
 - 14 First ballerina (Ital)
 - 16 Comes up
 - 17 Acrobats' equipment
 - 20 Young man
 - 24 Ability to tolerate hardship
 - 29 Call off
 - 30 Play guitar
 - 34 Folds in garments
 - 35 A skinflint
 - 36 Become bad
 - 38 Tent material
 - 42 A egg container
 - 44 Carves
 - 47 A large number of
 - 49 Dam-building animal
 - 50 A beautiful flower
 - 52 Extravagant
 - 54 Earache
 - 56 A cure-all
 - 58 A religious holiday
 - 60 Slight wind
 - 62 Severe test
 - 64 A prophet
 - 66 Domestic animals
 - 68 A tax list
 - 71 A garment
 - 72 Bacon slices
 - 73 Gather up herds
 - 74 A singer
 - 75 Midday
 - 77 Type of light aeroplane
 - 79 Floating
 - 81 Sing Swiss style
 - 83 Bag-like plant part
 - 84 Bird home
 - 85 Garden tools
 - 86 Hospitality assistant
 - 89 A rascal
 - 90 Type of vegetable
 - 92 A learner
 - 94 Water storage
 - 95 Of turning point
 - 96 Declared off
 - 98 Luck
 - 99 A nobleman
 - 101 Acrid
 - 102 Affirm
 - 103 Personal stories
 - 107 Colour
 - 108 And others (abb)
 - 111 A plant used in medicine
 - 115 Poor mattresses
 - 117 A type of monkey
 - 121 Small wave
 - 122 Applauds
 - 123 Walking stick
 - 124 Diplomacy
 - 125 Compel
 - 128 Fleet of ships
 - 131 Full stop
 - 132 Lion sound
 - 133 Indigenous people of Peru
 - 135 Fishers
 - 136 Placid
 - 138 Light paper
 - 140 Artist's room
 - 142 Rappel vertically
 - 143 Leave as is
 - 144 Leases grassland
 - 146 A brawl
 - 148 To impinge upon
 - 149 Accompany
 - 151 Tube for fluids
 - 152 A star sign
 - 154 A price demanded for release
 - 155 Spanish dancer's implements
 - 157 Had short sleep
 - 159 Accomplished worker
 - 161 Local areas
 - 163 Modify fittingly
 - 164 Traces of an animal's path
 - 166 A rooster's comb
 - 168 Highly detailed
 - 170 Competitor
 - 171 Roof overhangs
 - 174 Medial amounts
 - 176 Useless person (coll)
 - 178 A colourful parakeet
 - 181 Olden bandstand
 - 182 Dried grapes
 - 183 Bird covering
 - 186 Keep away from
 - 187 A glass bottle
 - 189 Be unfaithful to
 - 191 A duck
 - 192 Heavy one-edged sword
 - 195 A waterway
 - 196 German submarine (1-4)

Promote your event SCAN ME ENTERTAINMENT & GIG GUIDE

OPTION 1 Large Display Banner

Linking directly to your website or ticketing outlet. \$100 p/w

OPTION 2 Half Display Banner

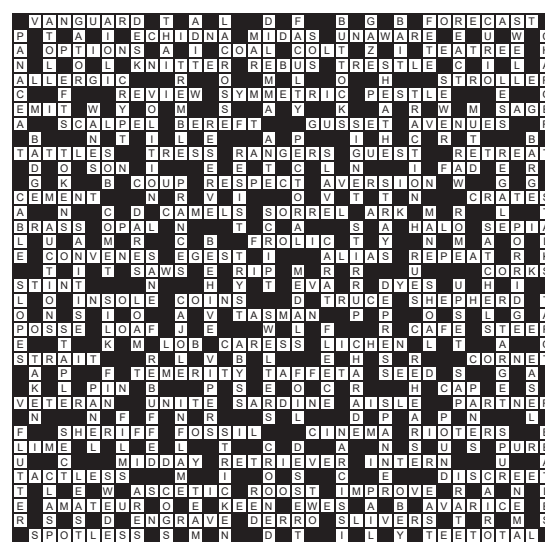
Linking directly to your website or ticketing outlet. \$50 p/w

OPTION 3 Free Text Listing

Contact Peter for more information on 9374 6650 or peter.lewis@echo-news.com www.echonepaper.com.au



Crossword Solution 1202 from 31 January, 2025



Connect with us



Sign up to our FREE monthly e-news by scanning the QR code.

kalamunda.wa.gov.au/newsletters

Stay connected through socials.

@cityofkalamunda



View Kalamunda

News from your City | February 2025



Mayor's MESSAGE

One of the great joys of summer is coming together as a community, and what better way to do that than with a movie under the stars? The Sunset Movie Series is back,

kicking off Friday 14 February at Maida Vale Primary School. Thanks to our partnership with Perth Airport and local schools, we're bringing even more sessions to new locations across the City. So, grab your loved ones, check the schedule, and enjoy a summer movie night!

Last month, I had the honour of welcoming 35 new Australian citizens at a special citizenship ceremony—a truly memorable moment as part of our Australia Day celebrations. We also recognised some of our local heroes with the Auspire 2025 Community Citizen of the Year Awards.

A huge congratulations to our award recipients:

- Thomas Hogg – Senior Community Citizen of the Year
- Wayne Garwood – Community Citizen of the Year
- Leo Russell – Young Community Citizen of the Year

Their dedication and contributions make our community stronger, and we are incredibly proud to celebrate their achievements.

Another exciting milestone was the opening of the upgraded changerooms at the Ray Owen Pavilion. The new changerooms, which also include a Universal Accessible Toilet (UAT), are designed to meet the needs of the City's growing sporting community. These improvements will support increased participation in local sports and help clubs in the area continue to thrive. The day was made even more special with a women's cricket derby between Lesmurdie Mazenod and Forrestfield!

And a shoutout to young entrepreneurs—if you have a business idea, the SEED Young Entrepreneurs Program is now open! Whether it's food, art, tech, design, or social enterprise, this is your chance to take the leap. EOIs close Friday 23 May 2025—apply today!

Looking forward to seeing you all out and about this summer!

Mayor Margaret Thomas JP



ZIGZAG GALLERY

In A Better Place you are invited to step into an immersive exhibition that challenges your perception of nature and our role within it.

Join us for the opening night!
When: Friday 14 February
Time: 6pm–9pm
Where: Zig Zag Gallery

The exhibition runs from 15 February – 9 March.



Find out more kalamunda.wa.gov.au

DEMENTIA INFORMATION FREE COMMUNITY SESSIONS



Kalamunda Libraries are hosting a series of FREE information sessions in partnership with Dementia Australia, aimed at raising awareness about dementia and its impact on our loved ones and the wider community.

Each session covers a unique topic, offering valuable insights, practical tools, and support strategies to help you and your family navigate the challenges associated with dementia. Bookings are essential for all sessions—secure your spot today!

Understanding Changes in Behaviour

Where: High Wycombe Library
Wednesday 12 February | 9:30am - 12:30pm
Book: trybooking.com/CWLJM

Mild Cognitive Impairment

Where: Kalamunda Library
Friday 28 February | 9:30am - 11:30am
Book: trybooking.com/CWLFN

Grief, Loss and Dementia

Where: Kalamunda Library
Friday 7 March | 9:30am - 12:00pm
Book: trybooking.com/CWLHL



Find out what's on kalamunda.wa.gov.au/whats-on

SEED: 2025 NOW OPEN! YOUNG ENTREPRENEURS PROGRAM



Are you a young person with a business idea that you need help getting off the ground?

The City of Kalamunda is calling out to anyone aged 15-25 with a business idea they want to pursue. Whether you are a foodie, artist, tech pro, beauty guru, designer or you have a social enterprise idea.

Grow your idea and submit your interest at engage.kalamunda.wa.gov.au | scan the QR

Expressions of interest close Friday 23 May 2025.



Have Your Say

Being part of the community means having your say.

Join the conversation and contribute to matters happening in your City.

engage.kalamunda.wa.gov.au



Haynes Street Revival Project Street Party

Come along to celebrate the footpath mural being painted along one of Kalamunda's main streets!



Date: Saturday 22 February

Address: Haynes Street, Kalamunda

- Live music
- Face painting
- Silent disco
- Photo booth
- Market stalls

Celebrate the transformation of Haynes St! After three days of hard work, creativity, and community spirit, we're ready to unveil the transformed Haynes Street!

When: Saturday 22 February
Time: 2:00pm - 6:00pm

Where: Haynes Street, Kalamunda

Come and see the incredible results of our Build Week efforts, led by the Youth Action Kalamunda Team!

Find out more at kalamunda.wa.gov.au/whats-on

Sunset Series MOVIE FESTIVAL

Friday 31 January Bluesack Stirk Park, Kalamunda	Friday 14 February Captain Underpants Maida Vale Primary School	Friday 21 February Masha: The Forest Song Mary's Mount Primary School, Gooseberry Hill
Friday 28 February G-Force Lesmurdie Primary School	Friday 7 March Migration Walliston Primary School	
Friday 14 March Wolf and the Lion Kalari Park, Wattle Grove	Friday 28 March Pokemon: Detective Pikachu Dawson Park Primary School, Forrestfield	

Brought to you by City of Kalamunda, supported by Perth Airport.

Perth Airport

City of Kalamunda



Find upcoming movies kalamunda.wa.gov.au/sunset

Ordinary Council Meeting
6:30pm, Tuesday 11 February
Public Agenda Briefing Forum
6:30pm, Tuesday 25 February
Administration Centre, Council Chambers
Visit kalamunda.wa.gov.au to view the Agenda

Prohibited Burning Period
NO BURNING ACTIVITIES PERMITTED
All fire breaks and conditions under the current "Fire Hazard Reduction Notice" must be maintained up until 31 March 2025

Contact Us
9257 9999
enquiries@kalamunda.wa.gov.au
2 Railway Road, Kalamunda
PO Box 42 Kalamunda WA 6926



ECHO Trades & Services

9374 6666
 classifieds@echo-news.com
 BOOK ONLINE: www.echonepaper.com.au

Airconditioning & Refrigeration

ACR
 Lic. No. AU05609
 • Local Company
 • Local Prices
 Reliable & Efficient
 Pensioner Discounts
 For all your airconditioning & refrigeration service & installation
9454 9945

Bobcats

MIDLAND BOBCAT HIRE
 BOBCATS, 8 & 12 TON TIPPERS, MINI EXCAVATORS
 Free no obligation quotes and advice
Russell & Lynn Edwards
 Owner/Operator
Russell: 0417 957 597
 russlynn4@bigpond.com

BOBCAT - TRUCK EXCAVATOR ROCKBREAKER
 • Bobcat works, Earthworks & Truck Hire
 • Driveways - Removals / Prep / Construct
 • Excavation / Trenches / Drainage / Soakwells
 • Shed & Tank Pads / Rockbreaking & more ...
 Reliable Service
DAVE 0417 096 614
 DW Cartage & Earthworks

Brickpaving

LIMESTONE BRICKLAYING BRICKPAVING
 Retaining & Feature Walls
 Garden Beds etc
 Over 25 year experience
Ross Lucassen 9295 2837

STRAITLINE PAVING
 Specialising in all forms of brickpaving & limestone. RESTORATIONS & REPAIR WORK
 POOLS • DRIVEWAYS • PATIOS
 25 Years Experience.
 No job too big or small.
 Guaranteed work.
 Pensioners discounts.
 ALL AREAS.
PHONE JOE 0404 101 513

Carpentry

MORGAN CARPENTRY & MAINTENANCE SERVICES
 FREE QUOTE
 ALL ASPECTS OF CARPENTRY & MAINTENANCE WORK
 • 15yrs commercial & residential experience • Insured
 • Fully qualified, professional & reliable • No call out fee
 • Full police clearance • Pensioners discount
 Call Kevin **0450 538 596**
 www.morgancarpentry.com.au e:Kdd.morgan@hotmail.com

Carpentry • Joinery • Cabinetmaking and Home Maintenance Services
 • Doors • Decks • Skirting • Sash Windows
 • Robes • Kitchenettes • Flatpacks
 • Pergolas • Furniture Repairs
 Pensioners Discount Fully Qualified
 Free Quote Call Mal **0400 250 761**

CARPENTER/CABINET MAKER
 Sash Window Repairs / Renovations,
 Kitchens, Laundries, Robes & Vanities made and fitted. Doors, Frames & Architraves.
 Skirting & Shelving. 40 years experience.
 NO JOB TOO SMALL. Call Terry
0401 743 027 / 9295 0797
 telcocarpentry@bigpond.com

Ceilings

CEILING & WALL RESTORATION
 ALL SMALL JOBS
 ALL REPAIRS & NEW ADDITIONS
 23 YEARS EXPERIENCE
9295 2041 OR 0402 270 688

CA INSTALLATIONS
 • Ceilings & Walls • All Facets of Ceiling Work
 • Domestic & Commercial • Office Partitioning
 All Reno Work Local and Loyal
0409 953 369

Charter Services

Rove Charters
 Airport transfers and fiFo runs
 Small and Large group tours
 Wedding and Event Transfer
 Cruise Ship Transfer
 Local transport and tour company for groups of any size.
08 6185 1333
 www.rovecharters.com.au

Concrete

TIGER CONCRETE
 FREE QUOTES • NO MESS NO FUSS
 Quality work, all types of concreting
Bobcat and Truck
Mike 0407 989 927

SUNJICH'S CONCRETE
 • Bobcat - Truck and Compaction
 • From Prep to Completion
FREE Quotes All Areas
 Call Zeljko
0417 902 301

B.C. CONCRETE DESIGN
 Cracked Pea Gravel/Exposed Aggregate
 Crossovers • Shed Floors • Drives
 House Extensions • Patios
Bobcat & Truck
 Call Anytime **0457 611 348**

Earthmoving

EARTHWORKS, DRAINAGE and PLANT HIRE
 Excavators, Tipplers, Skidsteer, Loader, Grader, Roller
 • Excavations, Earthmoving, Rock Breaking
 • Driveways & Asphalt
 • Culverts & Drains
 • Sand Pads, Aggregate Supply
 Call: Aedan **0474 840 418**
 info@groundforcecivil.com.au www.groundforcecivil.com.au

ASK ABOUT OUR GREAT PRICES FOR TRADES

Electrical

Andrews Electrical Systems
 Established 25 years • High Quality Guaranteed
 Residential ✓ Electrical Installations
 Commercial ✓ Electrical Maintenance
 Industrial ✓ Air Conditioning
 ✓ Telephone and TV
 ✓ CCTV and Data
 Call Andrew **0420 956 432**
 Email: andrewsperth@gmail.com

Offenburg Electrical Services
 EC 8591 EW166840
 For all your electrical repairs, maintenance and installs.
 Call Dean **0447881208**
 or email offenburgelec@gmail.com

Mrs Fixit!
 Female Electrical Contractor
 Free Quotes & No Call Out Fees
 TV / ANTENNAS • LIGHTS • POWER POINTS
 SAFETY SWITCHES / RCD'S • SMOKE DETECTORS
 REPAIR & MAINTENANCE • HOT WATER SYSTEMS
 Seniors / Pensioners / HCC Discounts
MARDI GLADWELL 0430 035 345

Fencing

ALLBLACKS FENCING
 Professional Kiwi fencer for all your farm & residential fencing requirements
Marty 0484 595 985

Firebreaks

FIREBREAKS
0474 840 418

Gutter Cleaning

Bobtail Gardens Gutter Cleaning Gutter Vac Services
 • Fully insured, registered business
 • Fully self contained vac truck
 • All waste removed from your property
 • Obligation free quotes, Senior discounts
 Phone Phil **0429 179 577**

Handyman

EVOLVE BUILDING & MAINTENANCE
 • Renovations
 • Property Maintenance
 • Handyman
0432 139 879
 Fully Insured ABN #14173780409 garys081@gmail.com

• Fencing • Gutter Cleaning • Shelving
 • Furniture Repairs • Painting • Tiling • Paving
 • Carpentry • Property Maintenance
 • High Pressure Cleaning
 Almost anything - just ask!
 Pensioners Discount Free Quote
Mal 0400 250 761

allwork HANDYMAN SERVICES
 SPECIALISING IN ALL INDOOR AND OUTDOOR HOME MAINTENANCE
 • Landscaping • Flat Packs • Painting
 • Limestone Walls • Reticulation • Brickpaving
 • Gutter Cleaning • Carpentry • General Repairs
 Contact Trevor **0424 130 555**

Limestone

Michael's Stonework
 Servicing All areas
Limestone & Coffee Rock
 Small Retaining Walls, Steps, Pillars, Stone Pitching, Garden Beds
 For a FREE quote & reliable service call:
0427 190 273

Massage

AMY'S
 Open 7 Days
 8.00am-6.00pm
 Thurs: 8.00am-9.00pm
 Health fund rebates available
9295 0247
 7125 Great Eastern Hwy Mundaring

Painting

JIM OLSEN
 Painter & Decorator
 FREE QUOTES - QUALITY WORK
 Reg# 3749
0430 339 118

PP Maintenance
 ABN: 86 642 331 437
PAUL 0477 660 703
 paul.percudani@outlook.com
 • Painting (Interior & Exterior) • Demolition
 • General Repairs • Pressure Cleaning
 • Restoration Home or Office (pre sale or lease)

WA COMPANY PAINTING
 REPAIRS • INTERIOR • EXTERIOR
 CALL TREV **0414 289 145**
 WWW.PERTHPAINTING.COM
 DISC. AVAILABLE PERTH PAINTING CONTRACTORS REG 6173

Scott Howard Painting Service
 Reg. No. 4234
 21 years experience
 Touch-ups • Repaints • Residential & Commercial
 • Free Quotes • Reliable Service
 • Quality Workmanship
0409 299 452
 38 Cupello Drive, Swan View

Pest Control

Mal's Pest & Weed Services
 Free Quotes
 • Servicing the Hills and surround for 30 years
 • Specialising in termite treatments & inspections
 Call Sean **0417 905 708**

Plastering

EASTERN HILLS PLASTERING
 ABN 69 373 874 693
 All Aspects of Plastering - Concrete Skim
 Coating - Acrylic Texture Finish - Renovations
 30 YEARS EXPERIENCE FREE QUOTES
TONY 0406 675 211
 easternhillsplastering@outlook.com

Plumbing

The Tap Doctor
 FOR ALL PLUMBING & GAS
 • Taps • Toilets • Hot Water Systems • Blocked Drains
 • Burst Pipes • Leak Detection
Call Today 1300 655 827
 Our Service Will Amaze You
 PL6703 www.thetapdoctor.com GF12028

Local Plumber
 Same Day Service
 Hot Water Expert
 - Upfront Prices
 - Pensioners Save
 - Drains, Taps, Toilets
 - Burst Pipes, Gas
 Emergency Plumbing 24hrs
6118 6368
 PL9956 *conditions apply

LOCAL PLUMBER
 PL9956
 Same Day Service
 Blocked Drain, Taps, Toilets
 Burst Pipes, Hot Water
 *conditions apply
 Same Day Emergencies 2-4hrs
9468 2581
 NO CALL OUT* + SENIOR DISCOUNT
 Your Best Local Plumber!

Hi I'm Local
 In Your Area
 Hot Water Expert
 ✓ Senior Discounts
 ✓ Upfront Pricing
 ✓ Fast Plumber
 ✓ Drains, Taps, Toilets
\$0 Call Out*
Plumbing Emergencies 24/7
6244 3226
 *conditions apply PL9956

Roofing

AMC ROOFING
 Specialising in All Tiled Roofing
 New Roofs
 Maintenance & Repairs
 Free Quotes - Aaron Carter
 Mob: **0417 930 817**

AR Specialist Roofing
 Solutions for all your roofing needs including
 • roof restoration • gutters • leaks
 • gutter guard installation • downpipes • sheeting
 • custom flashings • gutter cleaning • carpentry
 house painting • roof cleaning • PATIO BUILDING
 Call Andrew
0410 669 184
 arspecialistroofing@gmail.com

ROOF TILE REPAIRS
 For all your Roof Tile Repairs
 Contact David for a free quote on
0413 240 203 or 9255 4003
 Specialising in: Leak Repairs • Gutter Clean
 • Tiling • Re-ridging • Re-pointing

Roofing

YOUR LOCAL ROOF SPECIALIST
 PROFESSIONAL SERVICE & REPAIRS
 • METAL ROOFING | NEW AND REPLACEMENT
 • GUTTERS & DOWNPIPES | NEW AND REPLACEMENT
 • ROOF COATING AND RESTORATIONS
 • MAINTENANCE
 • LEAKS AND ROOF REPORTS
 CONTACT PETE FOR A FREE QUOTE
9274 7663
 sales@prowestroofing.com.au
 prowestroofing.com.au

Tree Services

HILLS TREE SOLUTIONS
 For all your Tree Lopping and Stumpgrinding Needs
 • Locally owned & operated • Call 24/7
 • Fully Insured • Cheapest Prices Guaranteed
 • Horizon Power Accredited • Servicing All Areas
CALL 9295 6511 OR 0414 438 610

CPD TREES
 ARBORISTS
Michael Byrne Dip. Arboriculture
0411 750 342
 www.cpdtrees.com.au
 arborist@cpdtrees.com.au

TLC Tree Services has merged with Payne's Tree Services
 FREE QUOTES AND ADVICE
 • MULCHING • LAND CLEARING
 • STUMP GRINDING
 • TREE LOPPING
 Call Clint on **0455 132 014**
 paynestreeservices.com.au

Window Cleaning

TATANIA'S Window Cleaning
 Homes, Shopfronts, Offices, Tracks & Flyscreens
0467 282 127
 Police Clearance
 tataniawindows@gmail.com

ECHO Indemnity and Warranty
 ECHO NEWSPAPER CONDITIONS OF ACCEPTANCE
 When an individual or other legal entity ("the Customer") requests Echo Newspaper ("Echo") to place an advertisement in this Newspaper, they agree to be bound by the following terms and conditions:
 1. Echo, at its sole discretion, may decline to publish any advertisement requested by a Customer. If Echo decides not to publish a particular advertisement, there is no obligation on Echo to disclose the reasons for its decision, and Echo will not be liable for any loss or damage occasioned to the Customer as a result of the decision.
 2. Echo will not be liable for any loss or damage caused to a Customer as a result of delay or as a result of Echo failing to place a requested advertisement or publishing an advertisement containing an error or omission.
 3. Echo may, at its sole discretion, decide to refund a Customer a portion of the cost of the advertisement if it forms the view that the error was not attributable to the Customer and the Customer notifies Echo of the error or omission before 5.00pm on the day the advertisement first appears in the Newspaper.
 4. Complaints concerning the accuracy of any invoice must be notified to Echo within 30 days from the end of the month in which the advertisement was published, after which time the Customer forfeits any rights it may have had to challenge the invoices.
 5. The Customer warrants that publication of the requested advertisement/s will not contravene any laws, whether statutory, equitable or otherwise, and agrees to wholly indemnify Echo (and its employees and agents) against all expenses, loss and damage arising directly or indirectly from the publication of the advertisement/s.

ECHO Classifieds

9374 6666

classifieds@echo-news.com

BOOK ONLINE: www.echonepaper.com.au

Electrician

LITL Electrical
All types of electrical work. **Jeff Overton**
0483 858 603.
EC14844

Gardening

HILLTOP Mowing & Yard Maintenance Glen Forrest & Surrounding Areas PH: 0400 365 887.

Gardening

Bilby's Garden Services
Weed, Prune, Mow & Slash. Free Quotes 0416 855 335.

Gardening

Ian Mac's whipper snipping, chain sawing and weeding. Small tree lopping jobs. 0426 211 137.

Gutter Cleaning

Gutter cleaning & solar panel cleaning. Jason 0421 455 546.

Handyman

WILLIS BUILDING & MAINTENANCE SERVICE. Specialising in all house maintenance, pergolas, decking, verandas, painting and carpentry. 0487 093 355.

Health & Beauty

Mobile Hairdresser. Phone Lorraine 0412 291 055.

In Memory

Dave Pert, condolences to Dot & Family on the passing of our long standing member. Always a gentleman. From Swan Bowling & Recreation Club.

Lawn Mowing

Tony's Lawnmowing, Handyman & Firewood. Cheap rates. Midland & Surrounding Areas. 0431 831 948.

Painting

Painting, Gardening, Pressure Cleaning. 0477 660 703. Local.

AAA PAINTING INTERIOR/EXTERIOR
For very competitive prices and old fashioned service ph Nathan on 0409 247 293. (Reg. No. 6605)

Regrouting

Bathroom Regrouting. Call Andrew 0413 158 763.

Solar Services

Solar Panel Cleaning with Anti Mould & Solar Wax Treatment. 0421 455 546.

Window Cleaning

Tatania's Window Cleaning. Tracks. Frames & Fly screens. 0467 282 127.

Public Notice

AMENDMENT NO.19 TO LOCAL PLANNING SCHEME NO.4 – SHORT TERM RENTAL ACCOMMODATION PROVISIONS

Notice is hereby given for public information that the Shire of Mundaring, at its Ordinary Council Meeting held on the 10 December 2024, resolved to adopt and grant consent to advertise Amendment No.19 to Local Planning Scheme No.4 for public comment.

The purpose of the Amendment is to reflect recent changes made to the *Planning and Development (Local Planning Schemes) Regulations 2015* in relation to short term rental accommodation.

A copy of the Amendment document can be viewed via the Shire's website: www.mundaring.wa.gov.au

Limited printed copies of the Amendment document are also available at the following locations:

- Shire of Mundaring Administration Centre (7000 Great Eastern Highway, Mundaring)
- Albert Facey Memorial Library (1 Nichol Street, Mundaring)
- Katharine Susannah Prichard Library (119/135 Scott Street, Helena Valley)
- The Hub of the Hills (8 Craig Street, Mundaring)

Comments in relation to this Amendment will be accepted by the Shire of Mundaring, in writing until close of business on **Friday 21 March 2025.**

Any further information can be obtained by contacting the Shire's Planning Service on 9290 6740 or via shire@mundaring.wa.gov.au

Jason Whiteaker
CHIEF EXECUTIVE OFFICER



Employment

Study Hub Coordinator – Ellenbrook

RDA Wheatbelt is seeking a dynamic Study Hub Coordinator to lead the Ellenbrook Study Hub, supporting students through the Australian Government's Suburban University Study Hubs program in partnership with the City of Swan.

You will provide study and technical support, guide students through university systems and deliver study skills sessions. You'll also lead the hub, deliver outreach events, build partnerships with schools and businesses and promote the hub through social media and community engagement.

We need a passionate professional with experience in higher education and student support or community engagement. Strong leadership, communication, and problem-solving skills are essential. A Driver's Licence, National Police Certificate, and Working with Children Check are required. Qualifications in education, management or client support are highly desirable.

Visit the RDA Wheatbelt website for the full application package. Submit a two-page cover letter addressing the selection criteria and a CV with two references. <https://rdawheatbelt.com.au/job/opportunity-study-hub-coordinator/>

Applications close on the 27th of February at 5pm.

Ellenbrook

Study Hub

RDA Wheatbelt is an equal opportunities employer



ADVERTISING SALES EXECUTIVE

If you enjoy meeting new people and have an outgoing personality, then this is the job for you. We are a small, privately owned and independent newspaper looking for an energetic and vibrant person to join our team.

The successful applicant will have:

- A current "C" class drivers licence and reliable vehicle.
- A smart appearance with a strong commitment to customer service and the ability to develop and implement successful sales strategies, including digital, by building and maintaining long lasting client relationships.
- Strong negotiation verbal and written skills with excellent presentation skills is a must.

This position is Monday-Friday and offers a salary package, including a commission structure with a weekly car allowance.

Email Curriculum Vitae to
General Manager / Editor
E: peter.lewis@echo-news.com

CITY OF SWAN

NOTICE OF PROPOSED LEASE OF LAND SECTION 3.58 OF LOCAL GOVERNMENT ACT 1995

PROPERTY: 25 Junction Parade Midland, WA, 6056

LESSEE: Psychwest Pty Ltd

ANNUAL RENTAL AMOUNT: \$35,000 per annum plus GST and outgoings

VALUATION: \$35,000 to \$40,000 per annum plus GST and outgoings

PURPOSE: Commercial office (non-retail)

TERM: Two one year further terms

Submissions in writing and addressed to the undersigned may be lodged on or before Monday, February 24, 2025.

Stephen Cain
Chief Executive Officer
City of Swan
PO Box 196, Midland, 6936



Do you have something to Celebrate?



Why not announce it in the Echo?
Call 9374 6666 to share your special news.

ECHO Notice Board

A free service for non-profit organisations
9374 6666
editorial@echo-news.com

Upcoming events

- **World Vision Mundaring and Hills support group** holds its monthly stalls on the second Saturday of the month in the Woolworths Mall in Mundaring. For more information call Suzanne on 0452 075 371 or Krissy on 0431 570 985.
- **CWA Kalamunda** meets on the second Friday of each month at 10am on Central Road, Kalamunda behind Aldi, look for the blue tree. Go along to join in the fun and meet new friends.
- **Mundaring Garden Club** meets every second Tuesday in Mundaring. The annual program includes entertaining guest speakers who present on a wide range of topics. Presentations are followed by morning tea in the club café. For more information, call the secretary on 0414 303 985.
- **Talkie Tea Time** will be held at Midland Ascension Hall, 17 Spring Park

Road, Midland on Saturday, February 15 from 2.30pm to 4.30pm. Kayaker, author and photographer Terry Bolland will be sharing stories of his adventures around the world plus showing fascinating photos of bird life on the Swan River. To RSVP call 0414 386 398 or email france_scairwin2@inet.com.au

- **The Kalamunda Combined Probus Club** is meeting on Wednesday, February 12 at 10am meet at St Barnabas Church Hall, Spring Road, Kalamunda. The speaker will be Murray Smalpage, who will talk about his career in the police force, from being a cadet in Kalamunda from 1979 to serving up north before he retired.

Noticeboard is for non-profits and community groups advertising free/low cost events/programs. Entries must be emailed to editorial@echo-news.com two weeks before the event.



Woofers of the week

Ned is a two-year-old kelpie. He has come from a farm but due to his owner's ill health he has to be rehomed.

He has been trained to work sheep so he is very active and not suitable for a smaller block. He is sterilised, vaccinated and micro-chipped.

Costs apply. Contact Bakers Hill Dog Sanctuary on 9574 1438.



"Lets keep local people in work"

To advertise your situations vacant call 9374 6666.

OR

Do you have something to Celebrate?

Why not announce it in the Echo?
Call 9374 6666 to share your special news.





Midland Guildford player Chloe Piparo is one of three women to play 100 matches for WA in the Women's National Cricket League.

Chloe Piparo reaches WNCL milestone

MIDLAND Guildford player Chloe Piparo played her 100th Women's National Cricket League (WNCL) match on January 27.

The milestone means Piparo, who captains the WA side, is the third WA woman to achieve the feat following former players Avril Fahey (124) and Angele Gray (105).

A classy right-hander Piparo made her debut in October 2012 as an 18-year-old and has been a regular fixture in the WA side ever since.

A top-order batter capable of batting long periods, Piparo's record for her state is unmatched, with the 30-year-old now the record-holder for most runs for WA in the national competition.

Piparo has compiled 3051 runs at 33.9 over 99 matches, including 23 half-centuries and four centuries with a highest score of 119.

A career-best season in 2022-23 (513 runs at 51.3)

saw her earn a maiden Zoë Goss Medal, awarded to the best performing player for WA during the season.

Her class and composure at the crease have long been her standout feature, while her ability to read the game has seen her become one of the best leaders in the competition.

Touted as a captain in waiting from her junior days, Piparo took over leadership duties from Bolton ahead of the 2018-19 WNCL season and now stands as WA's longest-serving skipper.

WA were hoping to continue on a winning momentum, after their convincing bonus-point victory over New South Wales at the WACA last time out.

But in Piparo's 100th match WA lost to Victoria by two wickets with three balls remaining.

WA next play the ACT Meteors on Friday, February 7.

Midland Guildford cricket

AFTER interruptions to the first week of two-day fixtures for the male sides and a week off for the female sides, matches resumed for Midland Guildford Cricket Club during the past weekend.

The female A grade dominated in their match against South Perth as they won in a resounding manner by 200 runs.

After winning the toss and batting first, strong performances from Abbie Whybrow (64 from 77) and Naomi Dattani (82 from 103) propelled the score to 292 all out.

Shay Manolini produced a spell of 5-19 from 7.3 overs in a performance that helped dismiss their opposition for a total of just 92 all out.

The male 1st grade side were unable to play on day one of their match against Mount Lawley but were still able to manage a seven-wicket victory after a declaration from their opponents allowed for a result to be possible in the match.

Regan Hill was the best performing bowler with three wickets for 39 runs from 8.5 overs, helping the side limit their opposition to 5-219 from 51.5 overs before they declared their innings.

With the target set at 220 for victory, Austin Thomas (94 runs from 113 balls) and Keaton Critchell (78 not out from 64) were the key contributors to chasing down the total in 41.3 overs.

With only one session of play possible on the first day of the male 2nd grade, the score was 1-64 from 29 overs at stumps after being sent in to bat first by their opponents.

Hayden Collins resumed the day on 28 not out and would score 91 from 204, while Calan Hill smashed 50 from 37 to help the side set 5-237 from 66.4 overs as they declared at lunch.

With Mount Lawley needing 238 for victory from 63 overs, the bowlers kept control over the match for the entire innings.

Jack Giancono took 4-26 from 13.4 overs (including the final two wickets) and Ben Skinner, Jacob Heslop and Lennon Brookes all took two wickets as well.

With just 6.2 overs remaining in the day, the side bowled their opposition out for 106 to secure victory by 131 runs.

In the male 3rd grade match, the side set Mount Lawley a target of 150 for victory after Harry Giancono made 64 not out from 161 but were unable to take all ten wickets as they fell short, and the match ended in a draw.

Tom Hayward and Ashley Mucciarone both took three wickets, but it wasn't enough as their opposition survived with two wickets remaining at the end of the second day's play.

The male 4th grade saw no play on day one of their match.

Local Real Estate

**Residential
Commercial
Rural & Country**

Wind back time in Wooroloo original home

THIS 1933 Wooroloo house is one of the original homes in the area built and situated on 2428sqm of land with plenty of room for a family.

The house has four bedrooms, one bathroom and a single carport, but the ample space of the block will make accommodating visitor parking a breeze.

A traditional front veranda welcomes you to the home and provides a great place to sit with a cool drink on a summer evening.

The front door opens into a spacious dining area and basic kitchen with a slow combustion oven and an electric oven with gas hot plates.

To the left of the dining room is the lounge featuring an original fireplace with a slow combustion heater.

The lounge, dining and kitchen areas have polished jarrah floors and off the lounge room is a bedroom with a walk-in robe.

The bathroom is central to the house and has a shower and toilet, with a handy second toilet outside.

At the rear of the house is a family room with access to the back yard and a central hall leading to three more bedrooms.

rooms.

The hall and family area has storage cupboards for keeping the home well organised.

The central laundry is spacious and offers another great storage option.

Walking around the house outside will lead to the old original cellar sitting under the lounge area, which is full height, has power and is a great cool place for storage.

The garden is fenced and has some older landscaping and terracing in place.

There are numerous limestone block raised veggie beds with the rear of the block separately fenced and containing a well-sized shed that doubles up as a carport.

A lot of the home has been re-clad in corrugated iron and looks very neat, along with an iron roof.

A brand-new split system reverse-cycle air-conditioner is to be fitted prior to settlement.

Address: 245 Bailup Road, Wooroloo
Price: From \$590,000
Agency:
Real Estate Plus
For more information contact Jo Hallam on 0409 847 102



I Remember When...



Milton Rendell – CEO
Real Estate Plus Group

Do you remember how you dealt with the heat without air-conditioning? Some of us had fans, some had water coolers and some of us had nothing at all. One of the things we used to do was open the house at night the best we could do to get some cool air. It wasn't uncommon to see the front door of a house open and if they had a flywire door that was locked then that was the security. Compared to today's standards it wasn't ideal security nor was it that effective until late in the evening. Sadly I slept in the sleep-out on the east side of the house which got plenty of morning sun, so I would wake up pretty warm and the room pretty bright early in the morning. I would open the louver windows at night with no fly wire then spend the night listening to mozzies buzzing around my room. Some nights I would just throw a blanket on the lawn in the backyard to keep cool enough to sleep mind you though in Guildford the planes would wake me every now and then. The worst thing about summer was the easterlies which were warm but also carried the perfume of the drying sheds in Helena Valley. Boy, it was a great way to clear out your nostrils. This odour was simply horrible and if it got inside your house it was worse. It affected different areas at different times depending on the wind direction but when the easterlies hit, it had its own unique smell and sometimes coupled with the loving scent of the abattoirs made life very interesting shall we say. Sadly after a while you got used to it but I don't think the washing hanging on the line at the time would have been that pleasant to wear later without airing. The drying sheds were located on the southern side of the Helena River near Bushmead and by the river on Stirling Crescent. I'm pretty sure we wouldn't see any approvals for those to return to our area, nothing like the smell of rotting flesh to start your day or as you sit down to dinner.

REAL ESTATE *Plus* .com.au



CHIDLOW
9572 4113

MIDLAND
9274 5000

COMMERCIAL & INDUSTRIAL
6146 3333

MIDLAND \$320,000 NO GST



BEAUTIFULLY APPOINTED PROFESSIONAL OFFICE

4/42 The Crescent

- 84sqm with a professional fit-out
- Air Conditioning
- 1 car bay on site
- Leased until 12/06/2028

Mike
0403 621 899
Midland
6146 3333

FORRESTFIELD FROM \$649,500



ROOM TO MOVE 23 Dorchester Road

- Ducted air-conditioning
- Three bedrooms
- One bathroom
- Free-standing garage, games room
- Dual access
- Single carport

Edward
0409 004 424
Midland
9274 5000

REDCLIFFE \$25,000 + OUTGOINGS + GST PA



PROFESSIONAL OFFICE GREAT EXPOSURE

2/403 Great Eastern Highway

- Highway location
- 100 square metre air-conditioned office
- Easy access and exit to Great Eastern Highway
- Rent from \$250/sqm plus outgoings

Mike
0403 621 899
Midland
6146 3333

MIDLAND E.O.I



CONVENIENT & CHARMING 81 MORRISON ROAD

- Tenanted until the 25/11/2025
- Two bedrooms
- One bathroom
- Open-plan kitchen and dining
- Large backyard with patio and sheds

Edward
0409 004 424
Midland
9274 5000

MUNDARING OFFERS OVER \$949,000



OPEN SUNDAY 11.30AM-12.15PM 850 Walker Street

- Brick, Hardi Plank & Iron Home
- 2 Separate Living Spaces
- Entertaining Area, Single Garage
- Various Fruit Trees, Winter Creek
- Large Powered shed, 3468sqm Block

Alison
0428 914 085
Chidlow
9572 4113

WOOROLOO FROM \$590,000



OPEN SUNDAY 10:00AM - 10:45AM 245 Bailup Road

- Traditional early Hills 4x1 with 2WC
- 3 Living areas, Secure carport
- New 7KW R/C split system A/C
- Jarrah floors and original features
- Set on fully fenced 2428 sqm Block

Jo
0409 847 102
Chidlow
9572 4113

REAL ESTATE *Plus*

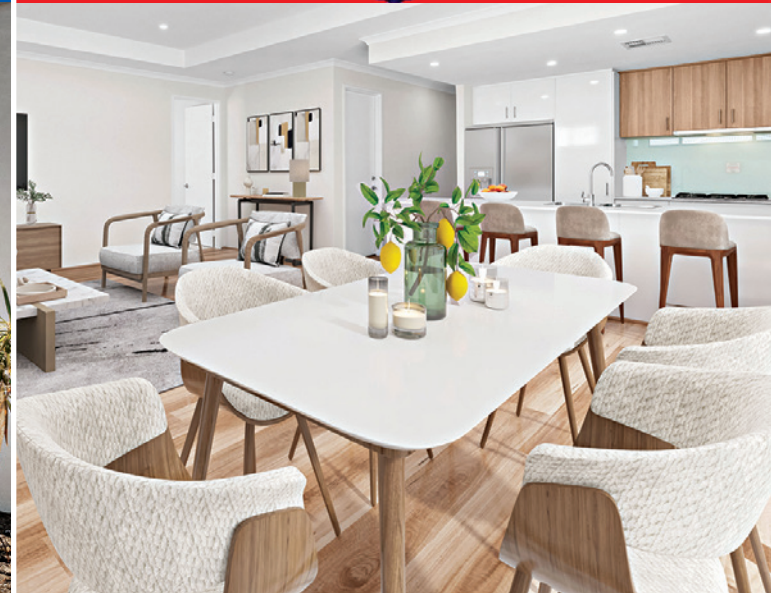
Plus LOANS
ACL: 383 631

Plus Your Settlements

FOR SALE from \$849,000

**CENTREPOINT
REALTY**

Home open
Saturday Feb 8th
1.00pm-2.00pm



20 Brooks St, Kalamunda

9 SOLD - 3 REMAINING

Home open
Saturday Feb 8th
1.00pm-2.00pm



18 Brooks St, Kalamunda

3 SOLD - 3 REMAINING

BRAND NEW SPACIOUS DESIGNER HOMES

**3 Bedroom x 2 bathroom plus
Theatre/4th Bedroom**

This may be your last opportunity for some
time to secure this style of residence in a
sought-after location!

Call today to arrange a viewing.

**Joel Mitton - 0415 636 585
George Manios - 0418 941 692
joel@centrepointherealty.com.au**

Features Include:

- Chef's dream kitchen with stone bench tops, glass splashbacks and Westinghouse 900mm stainless steel appliances
- Spacious open plan light filled living area with quality laminate hybrid timber flooring
- 3 Large bedrooms with built-in mirrored robes
- Designated theatre/activity room or 4th bedroom
- 2 Deluxe bathrooms with full height tiling and double vanities with stone tops
- En-suite to master with separate bath and large shower
- Double remote garage with storage area
- Zoned reverse cycle ducted air-conditioning
- 31 Course high ceilings throughout
- Quality fixtures and fittings throughout
- Private courtyards with access from the living area, bedroom 3 and theatre room
- 7 STAR Energy Efficiency Ratings!

www.centrepointherealty.com.au • 08 9325 3555