

Kalamunda
significant
tree register
demanded

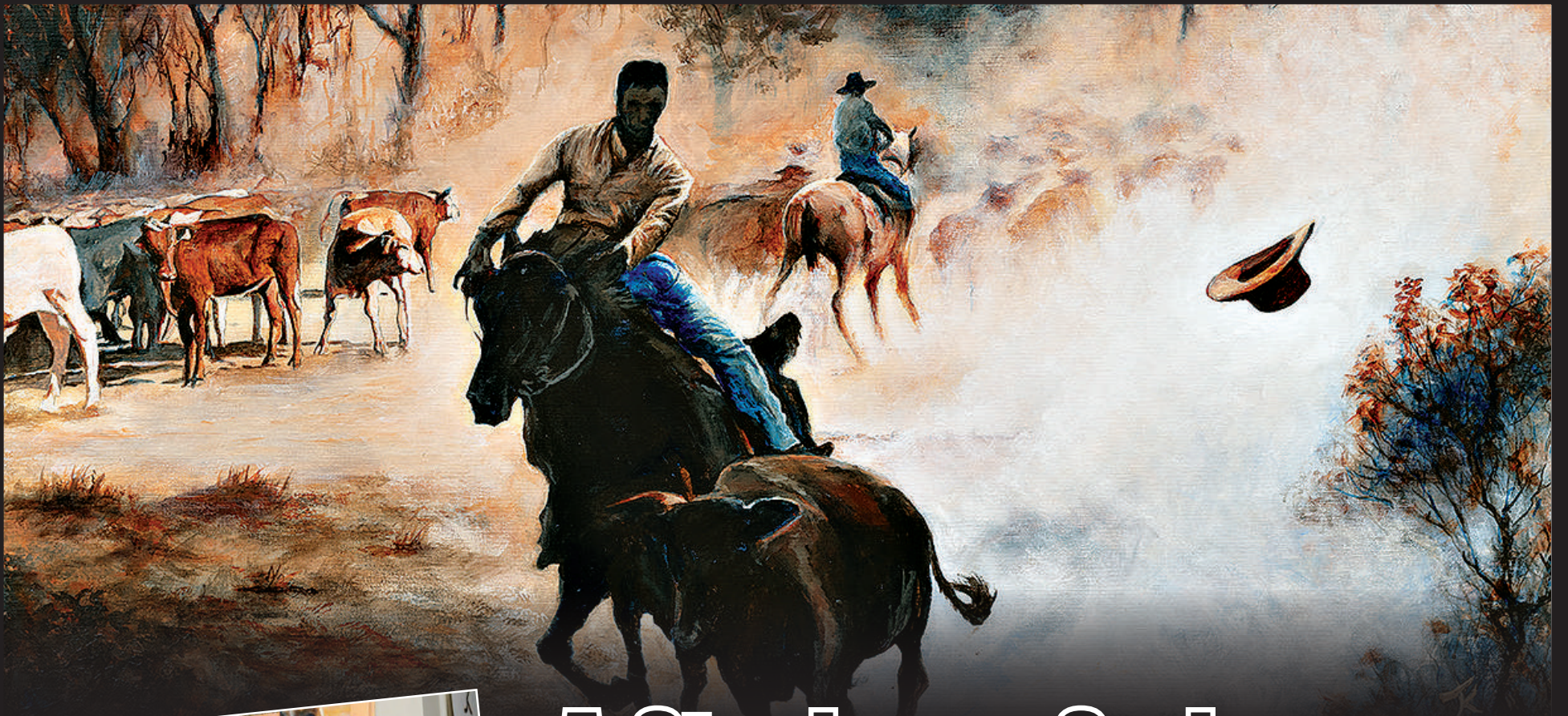
PG 6

DJ Incredible
to play at
Hyperfest
March 29

PG 4

Olympic
grappling
dream for
Swan products

PG 18



Artist John Ned Kelly.

A Stockman Series: immersive art exhibition

PG 15

Midland's Birli Gallery will be hosting On the Land: A Stockman Series, an immersive art exhibition by John Ned Kelly from April 12 to May 2.

Kalamunda Funeral Company

JUST give us a call. No Fuss, No Frills.



Just Cremations

17 Canning Rd, Kalamunda 1800 65 35 95

TREE
AESTHETICS

BACK IN
STOCK!!

Place your FIREWOOD ORDER NOW!!

PICK-UP OR DELIVERY OPTIONS AVAILABLE

Opening Hours

8am-4.30pm Monday-Friday
Lot 10 Talbot Road Hazelmere
(ENTRY OFF MIDLAND ROAD)

Call us now 9250 6599

office@treeaesthetics.com.au www.treeaesthetics.com.au

ROHAN FOX
Automotives



9295 0955

10 Wandeara Crescent,
Mundaring Trade Centre

- New car servicing
- Fuel injection service
- All mechanical repairs
- Brakes & clutch
- Lube servicing

REA
Mundaring

MRB7063

ECHO06022L

Learn Tai Chi

Genuine Tai Chi

Health Giving and Fun.

TIME: 11am – 12 Noon

VENUE: Cyril Road Community Hall 58 Cyril Rd, High Wycombe 6057

COST: 12 Months Fee \$175. No more to pay.

FREE TRY OUT

Wednesday 2nd April 2025 @ 11am

Contact Banyin Lee 9337 3852 or Lee 0432 882 562

ECHO210325L

PEK CARE INTERNATIONAL

OP SHOP MIDVALE

We Accept Donations

Volunteers needed please enquire in the shop

"One person's trash is another's treasure"

PH: 6181 4276

Unit 9, 14-22 Farrall Road, Midvale

6181 4276

Empowering people with disabilities

MORRISON ROAD

ROSE HWY

FARRALL ROAD

GREAT EASTERN HWY

PEK CARE INTERNATIONAL

Read between the lines

by Pastor Ian Kirk

The Highway to Heaven

Last Tuesday morning there was a major incident on Tonkin Highway; closing the highway completely down for hours for southbound traffic. It didn't take long before arterial roads and side roads became completely congested.

Many arrived at work or school quite late. Not only that, people were distressed, for as we know, when you are stuck in traffic, not knowing if you will make it to your destination in time, it stresses us.

I remember a time when we were travelling from St Kilda to Melbourne CBD to see the Sound of Music at the Regent Theatre. We left at 6.00pm for a 7.30pm concert start. It was only 6.5km away. But it took one and a half hours to get there. We just made it into the theatre before the doors closed; I was so distressed from that!

But one highway that is always open and never congested, is the highway to heaven - prayer. Even if eight billion people should all pray to God at the same time, He is able to hear us.

God's Son Jesus Christ spoke about this 'highway to heaven'. He taught us in John 16:23 "Truly, truly, I say to you, if you ask the Father for anything in My name, He will give it to you."

In Jesus' name we are assured that God hears us. What a blessing it is to believe in Jesus and to pray in His name. What a highway to heaven we have.

What's your view?

Email **editorial@echo-news.com** and let us know.

YOUR EXHIBITION DOES CREATE A REAL EXPERIENCE OF RURAL AUSTRALIA WITH SMELLS OF THE DUST, THE BUSH, CAMP FIRES AND ... SHEEP DIP!

BAA

On the Land EXHIBITION EXPERIENCE ALL THE SOUNDS, SMELLS & TOUCH OF RURAL AUSTRALIA

AWARD WINNING ARTIST, JOHN NED KELLY'S ON THE LAND EXHIBITION WILL OPEN AT THE BIRLI GALLERY IN MIDLAND IN APRIL WHICH WILL NOT ONLY BE A VISUAL DISPLAY BUT AN EXPERIENCE THAT COMBINES ART, SOUND, TOUCH AND SCENT.

ECHO YOUR THOUGHTS

Have your say: editorial@echo-news.com

Pain for ACROD holders

Dear Echo News,

Last week I parked in the new Midland train parking station.

Whilst there is ample parking for the holders of ACROD permits, it becomes a very long and arduous journey to the train station.

This can cause ACROD holders much pain and suffering.

Why has TransPerth made it so difficult for people who already have difficulties?

There seems to be no plans to make the train more accessible to people who have an ACROD permit.

At the moment it is unfair and unkind, and I find it a very disappointing place.

Also, the new parking station lacks clear exit signs.

What a mess!
Disappointed Chidlow resident

Save The Vines plea

Dear Echo News,

The Western Australia Planning Commission are now preparing to make their decision for or against the proposed amendment of The Vines structure plan.

The amendment opens the door to housing development replacing the green open space of the golf courses.

As community opposition, including the support from City of Swan Council, remains far reaching and united, the VVRA offer these points that motivate our campaign against the amendment:

- The Vines Country Club, established with state support (over \$100 million in today's money) and having currently both public and private courses, is a valued

regional and community asset.

- It is an important drawcard for tourism with consequent value to surrounding Swan Valley businesses.

- Since 2005 The Vines (WA) Pty Ltd have profited from land sales adjacent to the golf course. With little left, they are now seeking a structure plan amendment to enable housing infill of the green open spaces.

- The structure plan amendment does not refer to the north-east corridor developments and selectively misrepresents state and local government strategies and plans. Infill of The Vines is not in these.

- The planned population growth within 10 to 15 minutes of The Vines is another 100,000 people in the next 10 years – we need more open spaces and sporting facilities, not less.

- The community would welcome good maintenance and improving of recreational facilities. We are opposed to a driving range structure (Titanic size) positioned in the middle of the Lakes course, particularly when the existing driving range could readily accommodate a larger driving range structure and retain the practice areas.

- Breaking up the Lakes course for the proposed driving range and short course can be avoided. The short course can fit within the 18-hole Lakes course and retain the competitive flexibility of the amenity.

Development should not be at the expense of the local community.

The Vines Residents and Rate Payers Association (VVRA)

Working from home

Dear Echo News,

Peter Dutton's charge to have public servants return to working in "the office" could have serious consequences for these workers.

Those who work at home have had the opportunity to create a safe workspace tailored to their own needs, especially in regards to ergonomics in areas such as furniture, computers, ergonomic keyboards and ergonomically efficient software.

Returning to the office will be entering a space where safety and efficiency concerns are secondary to financial efficiencies in his call for "small government".

Mr Dutton should also ensure that those workers who do return to the office are not subject to workplace hazards such as RSI from using inefficient hardware and software, or are recompensed should they choose to bring their own devices into the office.

KG Blake Lesmurdie

Bailey Brewing parking

Dear Echo News,

For some time, our neighbourhood has been having a problem with the Bailey Brewing parking in the street and blocking traffic back to West Swan Road (stopping patrons at gate to see if they have a booking).

This is a major concern to Park Street traffic flow as trucks are getting stuck on the corner with cars trying to continue up Park Street while traffic is held up at the gate trying get into the venue.

It doesn't work full stop.

Thought for the day

"The only place success comes before work is in the dictionary."

— Vince Lombardi

The other main problem is street parking, with vehicles being parked some 200m down the road on both sides.

And then their patrons wandering down the middle of the road, as there is no pathway.

There is no room for both cars and pedestrians.

The neighbourhood has been onto the City of Swan for years, but nothing has changed.

Are the COS waiting for someone to get injured?

B Potter Swan resident

Bin sizes questioned

Dear Echo News,

I recently read the article in the Echo regarding the Shire of Mundaring waste service dictatorship and felt compelled to comment.

I have had an issue with the City of Swan regarding my waste service.

I have been trying to cancel the service since 2016 as the property is not my primary address and I have no waste.

They have not collected a single piece of rubbish since 2016.

In my frustration I wrote to the Department of Local Government that there is not a standard waste service and each council can set their own policies.

Why am I not surprised the waste service is so fragmented and not standard across the state?

When the service was rolled out to me, we were given the large waste bin to cater for the Christmas period, go figure.

I have an issue with

the fact that you cannot select the bin size to reflect your needs.

Why should a single pensioner have the same size bin as a large family and pay the same waste levy?

Looks like gouging to me when the shire says you can have more bins at an extra cost, why can't large families just have a bigger bin.

It seems like the shire has a one size suits all policy.

Call me selfish, but why should I subsidise another household?

S Turner Gidgagannup

The Echo reserves the right to edit letters for length, legal reasons or clarity. The opinions expressed do not necessarily reflect those of the Echo. All letters must contain the author's full name, address and phone number for verification purposes.

ECHO News

ADDRESS:

Unit 4/9 The Avenue
Midland WA 6056

Phone: 9374 6666

GENERAL MANAGER / EDITOR

Peter W Lewis 9374 6605
peter.lewis@echo-news.com

ADVERTISING

sales@echo-news.com
Karon McCracken 9374 6610

EDITORIAL

editorial@echo-news.com
Anita McInnes 9374 6603
Guanhao Cheng 9374 6602
Cindy Cartojano 9374 6601

PRODUCTION

production@echo-news.com
Jeanene Allen 9374 6613
Liz Rowlands 9374 6613

ACCOUNTS

accounts@echo-news.com
Caprice Harries 9374 6604

OFFICE HOURS:

Monday-Thursday:
9.00am – 5pm
Closed Friday

Closed: Weekends & Public Holidays

Public comment on Ballajura aged care closes soon



Lakes Estate Action Group members voice their concerns about the 2019 masterplan put forward by Southern Cross Care WA. Picture: Anita McInnes

ANITA MCINNES

PUBLIC comment is closing soon on the sale of land for an aged care development planned for Paradise Quays in Ballajura with Swan councillors having agreed on a preferred buyer.

For more than a decade the development of aged care in the area has been contentious – with many recognising the need for aged care but against the proposal submitted.

About five years ago the Lakes Estate Action Group (LEAG) told *Echo News* members wanted aged care but the masterplan proposed by the then developer Southern Cross Care WA was completely unsuitable.

On September 6, 2019 on their Facebook page LEAG said one of the major issues for the local election, within the Lakes estate was the development of the (proposed) Paradise Quays aged care retirement village.

The Lakes Estate Action Group, led by Mel Congerton, has been awaiting further information from both parties, but often to no avail,” the post by Bryce Parry said.

“We call upon Southern Cross and the City of Swan to inform us of the progress being made.”

In *Aged Care battle brewing in Ballajura* (*Echo News*, January 26, 2019) Mr Congerton said the estate was up in arms because of the height, scale and density of the plan.

The city said after hearing community feedback about the first masterplan, the council initiated a scheme amendment to the current zoning, which defined clear built form requirements to guide future development.

“This includes minimum setbacks and building heights,” the city said.

“The council also resolved to create the 80m Emu Swamp buffer area as a separate lot to ensure it is protected and retained

through land management planning.”

The scheme amendment was gazetted in November 2022.

On November 13, 2024 the council went behind closed doors to consider the submissions made through the city’s expression of interest campaign and agreed on a preferred buyer for lots 503 and 504 Paradise Quays.

In a statement the city said the preferred buyer was given 30 days to complete a due diligence process and submit a concept plan for the site.

“The preferred buyer has met the requirements and the city is now reviewing a draft sale and development agreement (SDA),” the statement said.

“Submission of the concept plan, including the SDA, gives the green light for the 14-day public comment period, closing on Monday, March 24.”

The statement said the Paradise Quays

proposal was intended to become a key component of the city’s strategy to ensure future aged care facilities.

“More than 20 per cent of the city’s residents are over the age of 55 and by 2036, the region will need 918 extra aged care beds and 1300 more retirement village units.

“The project is designed to provide an additional aged care service for Ballajura, which faces an increasingly serious shortage of aged care facilities – an issue shared with the wider Perth metropolitan area.”

City of Swan Mayor Tanya Richardson said the city had been examining the provision of an aged care facility in Paradise Quays for a number of years, after identifying the site as suitable for an aged care development.

“If approved, the proposed development will further boost the city’s quality aged care options for our community,” Mrs Richardson said.



Glen Forrest Volunteer Bushfire Brigade. Picture: Cindy Cartojano

Sewerage upgrades pending for the Glen Forrest brigade

CINDY CARTOJANO

AT this month’s ordinary council meeting, the Shire of Mundaring decided the chief executive officer will liaise with the Glen Forrest Volunteer Bushfire Brigade directly to address the matter of sewerage upgrades.

The motion was first put forward by the brigade’s captain Glen Stenton at the 2025 annual electors meeting last month.

Mr Stenton said the brigade had been at their current site for more than 20 years.

“We’ve got a sewerage holding tank that is known to leak,” he said.

“When it does leak, this effluent runs through the groundwater and likely into the nearby creek system.

“This overflow has been exacerbated following the addition of a washing machine at the station.”

He said the washing machine had allowed fire-fighters to wash their personal protective clothing at the station and not return the contaminated cloth-

ing home.

“We are seeking support from the council to fast track the upgrade of our sewerage system,” Mr Stenton said.

The shire said the holding tanks were serviced every quarter, but the frequency could be increased if capacity issues arose.

“In the short to medium term, cleaning the tanks is the most cost-effective approach,” shire chief executive Jason Whiteaker said.

“This is in the context of the potential for a re-development or relocation of the brigade station in the medium term.”


Mr Whiteaker said the shire recognised the brigade was one out of six projects in the shire which required capital investment.

“These capital works are generally funded through the state government’s Emergency Services levy, which is a competitive funding process,” he said.

Mr Whiteaker estimates it will cost up to \$1.5 million for a station rebuild.

ATCO Australia™

Public Notice Replacement Works



Natural gas pipes in the Bassendean area are nearing the end of their life. As part of our proactive Replacement Program, ATCO Australia will be upgrading the natural gas distribution network in this area. This work will ensure the continued security and reliability of these services for decades to come. For more information please visit our website or scan the QR code.

- There is no charge for this service and there is no requirement for you to be present when the work is undertaken.
- For safety purposes, your gas supply may need to be temporarily turned off for short periods between the hours of 8am-4pm while network upgrades are in progress.
- Traffic management will be in place in order for this work to be completed safely. There will be temporary lane and road closures around this area during these works, local detours will be in place. Please observe signage on site.
- Every effort will be made to minimise disruption and to permanently reinstate affected areas to their previous condition as soon as possible, within 15 working days of completion of works.
- We appreciate the community’s understanding while these essential works are undertaken and apologise for any inconvenience.
- ATCO Australia builds, owns and maintains the network of underground pipe infrastructure near your home, which makes it possible for you to connect to natural gas.

Please direct construction enquiries to **13 13 56** (weekdays 7am-6pm) or email **enquiries@atco.com**

For more information search for ‘replacement projects’ at **www.atco.com.au**

Office solutions for not-for-profits

MIDLAND Junction Lotteries House is a not-for-profit organisation created out of a partnership between LotteryWest and the City of Swan to provide financially accessible office solutions to upcoming not-for-profit (NFP) organisations.

The interior of Midland Junction Lotteries House offers purpose-built office spaces, providing low-cost solutions for NFP businesses to kickstart their growth.

Midland Junction Lotteries House administrator Geraldine Dalley said the space had helped launch successful clients to new heights, such as Ngala Parenting Support Services, Binar Futures sports program and Indigo Junction crisis support services.

“Midland Junctions Lottery House provides crucial access to the eastern urban corridor of Western Australia, allowing businesses to broaden their presence and reach,” she said.

She has seen the benefits firsthand with organisations such as Indigo Junction growing rapidly.

Since establishing at Midland Junctions Lotteries House, Indigo Junction has hired larger spaces to support the team’s business growth.

Complete with a mixture of open and quiet office spaces, a conference room, a sitting room, a fully functional kitchen, wheelchair accessible bathroom and an elevator for easy access.

Midland Junction Lotteries House provides versatile, accessible and budget-friendly office solutions to primarily NFP organisations.

Three-to-six-month casual hiring options are also available to private organisations on a case-by-case basis.



DJ Incredible says people shine when they are dancing and smiling and was why she hoped her music would make others shine.

DJ Incredible to play at HyperFest

GUANHAO CHENG

GREENMOUNT resident Cara Baldwin will be DJing at the 2025 HyperFest event to be held in Midland on March 29.

After exploring career options and learning there were limited opportunities for open employment, Cara changed tack and took up DJ lessons, as reported in *DJ Incredible all abilities Hollywood event* (Echo Newspaper, June 30, 2023)

Ms Baldwin said she loved music for its ability to make others happy and help give them a reason to get together.

“I love making people happy and I get a big crowd at HyperFest,” she said.

“I am making a playlist of songs that I know the crowd will love – hits and classics from now back through to the 80s.”

Ms Baldwin said the crowd should

expect to hear songs from Sabrina Carpenter, Tate McRae and back through the decades to hits by Fat Boy Slim and Frankie Goes to Hollywood.

Ms Baldwin’s mother Delia Richardson said her daughter loves an audience and appreciates music’s ability to connect people.

“Music connects people together and it has helped Cara bridge the communication gap that she sometimes encounters with other people,” she said.

“It’s a topic that provides an easy conversation starter.

“Working professionally as a DJ has given Cara so much – a sense of purpose and an identity.

“DJing has also provided Cara with a sense of self-worth.”

Mrs Richardson said all too often, people living with disability are ignored or

overlooked and then they can lack confidence.

“By acquiring a sense of self-worth through performing as DJ Incredible, Cara has the confidence to speak up and to chase her dreams and goals,” she said.

Mrs Richardson said though the economic downturn meant there were less opportunities available to DJ, the Midland community was very supportive of Ms Baldwin’s appearances at HyperFest.

“She was so popular in her first year that she was the only person to be offered two sets last year and she is playing two sets again this year,” she said.

Ultimately, Ms Baldwin would like to support big-name artists at venues such as Perth Arena though Mrs Richardson said she would also love to play at some of the world’s biggest festivals such as Glastonbury.

MARCH 17 - 31

Write your Will for FREE

Write your will for free via Safewill, Australia’s leading online will writing platform. Protect your loved ones, secure your wishes, and perhaps leave a gift to the cause close to your heart.

A gift to Anglicare WA will help build a fair and just Western Australia, where everyone can thrive.

[SAFEWILL.COM/ANGLICAREWA](https://safewill.com/anglicarewa)



Storm chaos in the eastern suburbs



A fallen tree at an Aveley park is just one sign of the damage caused by a severe thunderstorm in the eastern suburbs on Thursday, March 13.

PETER W LEWIS

PARTS of Midland, Swan View, Ellenbrook, Midvale, Gooseberry Hill, Bellevue, Kalamunda, Maida Vale and surrounding areas were thrown into chaos during last Thursday afternoon's severe thunderstorm.

The storm damaged network infrastructure affecting power supply to around 11,400 homes and businesses, with reports of flash flooding, fallen trees and inoperative traffic lights causing havoc on the local road systems bringing traffic to a standstill in some places.

During the storm the Swan Veterinary Hospital was damaged and had to close.

Gooseberry Hill experienced strong winds with a gust of 113km/h recorded at 1.54pm.

Amongst the power outages the Swan

View IGA and other shops, including the petrol station were forced to close, along with the entire Swan View Shopping Centre, while parts of the Midland Gate Shopping Centre were closed, with a roof collapsing at Target.

While Mundaring remained relatively unscathed, the rain damage extended to the York IGA which suffered flooding at the back of the store, which was made inaccessible to shoppers.

Seventy-five flights were delayed at Perth Airport due to workers not being allowed on the tarmac during a thunderstorm, and while planes could land, passengers couldn't disembark until it was deemed safe.

In a separate incidence the Department of Fire and Emergency Services fought a blaze in Ellenbrook sparked by a lightning strike.

A Western Power spokesperson said the electricity supplier understood the inconven-

ience the outage caused residents and communicated directly with customers and residents directly impacted via SMS.

The damaging and destructive winds associated with the storm front threw debris, including tree branches, into the network damaging equipment and bringing down powerlines.

Western Power emergency response crews responded to more than 40 hazards, with more being reported.

"Our priority during the storm was to respond to reported hazards first before we could undertake repair to ensure the safety of the community and our crews," a spokesperson said.

Due to storm conditions and the resulting high level of fault activity some customers were without power for an extended period, particularly where equipment such as elevat-

ed work platforms were required.

Western Power's network operations team worked to isolate damaged parts of the network to restore power.

By Thursday night Western Power emergency response crews restored power to the majority of customers impacted by the afternoon's severe thunderstorm activity, however there were still around 450 homes and businesses without power in the metropolitan area including Gooseberry Hill and Bellevue.

Western Power crews responded to more than 40 hazards, while the State Emergency Service responded to more than 75 requests for help.

Customers who experience an outage for more than 12 consecutive hours are encouraged to apply for an extended outage payment as an acknowledgement of inconvenience payment rather than compensation.

Western Power fined \$220,000 for unsafe Wundowie connection

WESTERN Power has been fined \$220,000 for the unsafe supply of electricity to a house in Wundowie, north-east of Perth, where two nearby residents received electric shocks and "the entire neighbourhood was at risk", according to a magistrate.

At Perth Magistrates Court on March 7, the network operator pleaded guilty to two offences under WA's electricity regulations following prosecution by Building and Energy.

The penalty is the largest fine against Western Power under laws that prohibit a network operator from supplying electricity to a premise without ensuring it is safe to do so. It follows seven prior convictions against Western Power for the same type of offence.

The court was told that in November 2022, two Western Power workers attended the Wundowie property where a private electrical contractor had installed a new consumer power pole.

One Western Power worker noticed the newly installed meter had incorrect wiring – with the active and neutral conductors transposed – but did not take any action.

The transposed wiring enabled the electric current to bypass safety devices, putting the homeowners and neighbours at risk of electric shock if they touched metallic water pipes or earthed electrical appliances.

The court was told that shortly after the Western Power workers reconnected the electricity supply to the original property, two residents of a nearby home received electric shocks in their shower. Fortunately, they were not seriously injured.

Evidence presented in court also showed Western Power failed to follow a procedure that requires the electrical contractor to complete a temporary disconnection tag or notice of completion, which declares the electrical work has been checked and tested for safety and compliance.

This tag or notice must be provided to the network operator before it can connect the electricity supply, but this did not occur at the Wundowie premises.

Although Western Power developed the procedure for using tags, it did not comply with its own process.



Energy Safety director Saj Abdoolakhan.

In addition to the \$220,000 fine, Magistrate Catherine Crawford ordered Western Power to pay costs of \$700, noting it was "only a matter of chance" that no serious injury or death resulted given the "extremely high" risk of harm and "the entire neighbourhood was at risk".

She noted Western Power's "relevant prior history for breaches of the same regulation", but she acknowledged the utility's early guilty plea and its updated procedures and processes since the incident.

WA's Energy Safety director Saj Abdoolakhan, said the significant fine clearly showed the seriousness of the offences.

"It is beyond belief that the network operator connected the electricity supply when there was an obvious hazard and no compliance notice," Mr Abdoolakhan said.

"Someone could have paid the ultimate price for this serious breach, which clearly shows why electrical safety laws and requirements are in place. This situation was easily avoidable by following legislation and, in fact, Western Power's own processes.

"This penalty should send a clear message to network operators about their community safety responsibilities."

Public Notice: New road, High Wycombe South

The City of Kalamunda advises that Council has approved the dedication of a portion of Lot 10208 (33) Stewart Road, High Wycombe.

The City has requested the Minister for Lands to dedicate the land. The Minister makes the final decision on the dedication.

Dedication means that the land will become a road for public use.

The dedication is in accordance with a subdivision approval condition, which requires the land to be dedicated as a road.

The dedication is consistent with the zoning of the land as Urban Development and its classification as Residential Medium Density (R30-R60) under the High Wycombe South Residential Precinct Local Structure Plan.

Please refer to Ordinary Council Meeting Minutes – 25 February 2025 (Agenda Item 10.1.1).



Anthony Vuleta
Chief Executive Officer



Scan to read the minutes from the
Ordinary Council Meeting
25 February 2025



kalamunda.wa.gov.au



Residents in Kalamunda called for further protection of trees in the area at the annual general meeting of electors with the significant tree register being a part of that effort.

Kalamunda significant tree register demanded

GUANHAO CHENG

KALAMUNDA residents are calling on the city to protect and retain trees, with demands for the creation of a significant tree register back in discussion following a meeting of electors.

Nature Reserves Preservation Group (NRPG) president Steve Gates said in the February 25 general meeting of electors that there needed to be a heritage tree register.

Mr Gates said a significant tree register did not appear to be a priority for the City of Kalamunda as it was first discussed in 1999 and nothing has come of it since.

“While I was involved for eight years with the community environmental sustainability advisory committee (CESAC) in the 2000s we did develop a draft listing and definition of significant tree attributes, neither of these has materialised in any form by the city

since then,” he said.

“NRPG has requested in our latest budget request for 2025-26 that this be one of the items budgeted for.

“Residents should know that our iconic trees in Kalamunda will be cared for, for their historic, environmental and cultural values.

“This is not a new proposal and NRPG does not understand why it has fallen by the way.”

Mr Gates said there were a number of other strategies which have also not progressed or languished for many years or decades.

“To be fair, the new chief executive officer as of last July, has committed to addressing this issue and we hope to see progress in the next year or so,” he said.

City of Kalamunda Mayor Margaret Thomas said she acknowledged the community interest in the matter and noted there

was potential to include one in an upcoming local planning scheme review.

“The City of Kalamunda does not currently have a significant tree register in place; however, there is potential to include one within local planning schemes,” she said.

“While the city’s local planning scheme 3 does not currently feature such a list, this may be explored as part of the next scheme review.

“The city has received resident feedback regarding tree retention and protection, particularly through past engagement processes and at the 2025 annual general meeting of electors.

“There remains strong community interest in this matter.”

As reported in *Kalamunda’s tree policy response a wakeup call* (Echo News, February 7), residents at the general electors meeting were also interested in seeing a re-

turn of Kalamunda’s revoked tree retention policy.

Mr Gates said the revocation of the tree retention policy meant there was no protection for the special and cherished icons of the community as seen with the recent McDonald’s restaurant and carwash application.

“It is just luck that the DA proposes to keep just two of the trees,” he said.

“On the last count that NRPG is aware of, there were only 16 trees listed on the significant tree register that was drafted in the 2000’s by CESAC.

“NRPG requests funding for resources to dramatically increase the entries on this list, including importantly any significant native vegetation areas, thereby acknowledging the importance of such trees and understorey highlighting the need to help preserve them.”

SLW TRANSPORT
PTY LTD

SLW Transport is family owned & operated

You need it moved just ask!

Prime Movers
Rigid Courier Utes
Side Loaders
Single Trailers – Triple Road Trains
Oversize Haulage
Mine & Construction Site Projects
Wharf Pick-ups & Deliveries

Phone: 0438 774 201

130a Milner Rd, HIGH WYCOMBE WA 6057

Intersection safety a council responsibility: Main Roads



Main Roads says the intersection has been the site of 22 crashes in the five years to 2024.

GUANHAO CHENG

LAST week it was reported that residents were calling for better traffic safety at the intersection of Kalamunda and Midland roads due to the frequency of dangerous traffic movements experienced there.

Kalamunda intersection under traffic scrutiny (Echo News, March 14) reported that the intersection had returned to public discourse as a major development was still under assessment to be developed near there.

The development would be a \$22 million shopping centre proposed at 332 Kalamunda Road – the empty lot behind the golf course on the corner of Midland Road and Kalamunda Road, as in reported in *Woolies to anchor in Maida Vale* (Echo News, February 23, 2024).

Residents living on Kalamunda Road, who asked not to be named, said they were concerned such a large shopping centre would only exacerbate existing traffic stresses in the area and the consequent accidents and near misses.

Echo News reached out to Main Roads to determine who was responsible for the intersection and the reported traffic stress experienced there.

A Main Roads spokesperson said the City of

Kalamunda was responsible for the road safety at the intersection of Kalamunda and Midland roads.

“The intersection of Kalamunda and Midland roads is under the care and control of the City of Kalamunda,” they said.

“The city is responsible for investigating and determining appropriate measures to mitigate and identify issues related to safety, efficiency, and accessibility on their road network.

“Main Roads will provide technical advice and assistance wherever necessary.

“Any questions relating to development applications should be directed to the Department of Planning, Lands and Heritage (DPLH).

“In the five years to December 31, 2024 there were 22 reported crashes at this location, of which one resulted in hospitalisation, 10 required medical treatment and 11 involved property damage only.”

A DPLH spokesperson confirmed that the shopping centre development was still under assessment but the development application report was no longer in use.

A new report had been written but not released to the public in which new traffic impact assessment results informed the development’s viability.

Kalamunda election result dragging on

GUANHAO CHENG

THE Western Australian Electoral Commission says voters in the Kalamunda electorate will have to wait until March 23 for the scheduled election result following a nail-bitingly close count.

The Kalamunda electorate remains waiting for the final result with votes remaining too close to call 11 days on from the election although the Western Australian Electoral Commission said wait times are normal.

Liberal candidate for Kalamunda Adam Hort maintains an 83-vote lead ahead of Labor candidate Karen Beale as of March 20 according to 2025 election results provided by the Western Australian Electoral Commission (WAEC).

The WAEC said in a media release that from March 19, provided all votes are returned and processed for a given district, they would commence the final count of votes including final distribution of preferences and then declare a final result for each district.

The media release also explains recounts can occur where the result is close, usually less than 100 votes, or where a candidate requests a recount and can provide reasonable evidence why one should be done.

So far, 81.85 per cent of votes have been counted and with the difference in the lead being less than 100 votes, the electorate could stand to have a recount.

In response to questions about normal election result wait times from *Echo News*, the WAEC said it was usual practise and proceeding as scheduled.

"The count is following the same timeline as it did in 2021," they said.

"Counts conducted on Election night by the WA Electoral Commission were indicative counts.

"These counts are used to make projections about likely results, however the final count of every vote cast in every district (full distribution of preferences) starts March 19 with six districts being counted each day.

"Results will be released once the full distribution of preferences for Kalamunda is complete.

"Kalamunda is scheduled for Sunday, March 23."

Mr Hort said he expected a recount due to the incredibly close result.

"Given the incredibly close margin, a recount is likely on Monday or Tuesday," he said.

"The disappointing part for the Perth Hills is that 27 seats have been prioritised for a detailed count before Kalamunda.

"Most of these already have a clear outcome - many new MPs



Kalamunda's Liberal candidate Adam Hort and Labor candidate Karen Beale still await a result.

have been inducted into their roles, and seven of the 27 have already been announced as ministers or parliamentary secretaries in the new government.

"Thank you again for standing with me - we'll hopefully have a final result early next week.

"And to my colleagues in the hospital system, I'm sorry this is taking so long."

Ms Beale also said the election was a very close one to determine a winner.

"Eleven days since the WA State election and the seat of Kalamunda is still too close to call," she said.

"I want to take this opportunity to thank everyone who has called, emailed and stopped me in the street to pass on their best wishes."



A special memorial for the late Keith Slater will be held later this month.

Memorial service for Keith Slater

A SPECIAL memorial service for Midland born and raised sportsman and businessman Keith Slater will be held later this month.

The service will feature tributes from the Slater family, the Midland Guildford Cricket Club and the Swan Districts Football Club.

In a statement a friend of the Slater family Brian Rakich said Western Australia has had several outstanding and champion sportsmen who excelled in both cricket and football.

He said most of them played in Keith Slater's era before it became virtually impossible to

play both sports at the elite level.

"It is fair to say that Mr Slater's achievements in playing both test cricket for Australia and state cricket for WA, his state football representation including captaining WA to an historic win against the mighty VFL at Subiaco Oval, his triple premiership wins with Swan Districts and his award of the Simpson medal in the 1961 premiership win against the great Graham 'Polly' Farmer, rank Keith at the top of the tree," he said.

"His back-to-back cricket premiership wins with Midland

Guildford in 1968-69 and 1969-70 were the pinnacle of an outstanding pennant cricket career with Midland Guildford.

"For the state, he was the first WA cricketer to make more than 2000 runs and take over 100 wickets for WA.

"Mr Slater was made a Member in the Order of Australia for his services to sport.

"He is also remembered by the Midland community as the founder, with his great mate Kevin Gartrell, of Slater Gartrell Sports, which continues today as a leading supplier of sporting goods to the Midland and wider state community."



METRONET



Public Transport Authority

BUILDING FOR TOMORROW

TEMPORARY CLOSURE OF CALE STREET LEVEL CROSSING

Monday 24 March to Wednesday 2 April 2025

To facilitate critical works on METRONET's New Midland Station Project, the Cale Street level crossing will be closed for works from 6.00am on Monday 24 March to 6.00pm Wednesday 2 April 2025.

During this time the pedestrian crossing will also be closed. An alternative pedestrian crossing is available at Morrison Road. Additionally, Bus Route 301, which runs between Midland Station and St John of God Hospital, includes stops along Yelverton Drive and provides north/south access.

Detours will be in place - plan ahead and follow the signs.



For more information call 9326 3666, or email info@metronet.wa.gov.au.

PTA_25611

Desert Loving Eremophilas!



Eremophila 'Kalbarri Sunset'



Eremophila 'Roseworthy'



Eremophila 'Magic Blush'



155 Watsonia Road, Maida Vale WA
www.zanthorrea.com (08) 9454 6260



CONSUMER PROTECTION

Meat scammers grilling social media groups

Commissioner for Consumer Protection Trish Blake

MEAT purchase scams are on the rise across social media, prompting a warning for WA consumers to be on alert when considering ways to slash their grocery bills.

Consumer Protection's WA ScamNet team has received growing reports from victims who have lost up to \$500 each to the scams, in which fake butcher or 'farm-to-table' profiles are posting in local community pages offering to deliver bulk meat at low prices.

The supposed offers range from \$250 for a mixed selection of meats, up to \$545 for half a butchered cow or pig.

Buyers are urged to pay via bank transfer, but are blocked from the page once payment occurs and the meat never arrives.

Scrutiny of the reported profiles reveal many are less than six months old and are operated by administrators of other known scam pages, with photos stolen from legitimate butchers based locally and overseas.

So far, the ScamNet team has helped with the removal of two profiles from the platform. There are indications other scam profiles are impersonating genuine butcher or 'farm-to-table' businesses by stealing their names and other information.

Aside from the risk of scams, it is illegal for meat to be butchered and sold directly to consumers without having been processed through a licensed abattoir due to food safety issues.

Commissioner for Consumer Protection Trish Blake was concerned these scammers were capitalising on cost-of-living pressures.

"Meat is a significant expense for most families, making these scams particularly attractive during times of financial hardship," Ms Blake said.

"We suspect more people are being ripped off by these meat scams than is being reported due to the relatively small individual losses in the hundreds of dollars. But because meat is a staple, this scam could generate substantial profits for those behind it.

"Our ScamNet team has had some success in getting pages pulled down, however it is likely the scammers are creating new profiles just as quickly."

Ms Blake urged consumers to watch out for the signs of a fake butcher business profile.

"Red flags include bulk meat being offered directly from farmers to consumers without the use of an abattoir, and at prices that seem too good to be true," she said.

"A lack of reviews, likes and comments are another indication, as well as the business not listing a fixed location. If the page is new or has a history of changing its name, that's another red-flag – checking the 'About' section's page transparency information will reveal this information.

"Be wary of any business on social media demanding payment via bank transfer given the difficulty in retrieving money sent this way," she said.



Unused swimming pools and spas can become ideal breeding grounds for mosquitoes.

Ross River detected in Kalamunda

THE City of Kalamunda is urging residents to take precautions against mosquito bites following the confirmation of a Ross River virus (RRV) case in an adult who acquired the infection locally.

Ross River virus is a mosquito-borne disease that can cause symptoms such as painful or swollen joints, sore muscles, skin rashes, fever, fatigue, and headaches.

While symptoms can persist for weeks or even months, early diagnosis is key to managing the illness.

Anyone experiencing these symptoms is encouraged to visit their GP for a blood test to confirm the presence of the virus.

Mayor Margaret Thomas emphasised the importance of community awareness.

"While there is no need for alarm, it is essential that we all take steps to protect ourselves and our loved ones from mosquito bites," she said.

"Simple actions, like wearing protective clothing and using insect repellent, can make a big difference.

"As residents, we all have a role to play in reducing mosquito breeding grounds on our properties.

"This includes properly maintaining water sources, such as unused swimming pools and spas, as untreated stagnant water provides an ideal breeding environment for mosquitoes."

Ms Thomas said the city was working closely with the Department of Health to monitor the situation and implement mosquito management strategies.

The department has launched its Fight the Bite campaign to educate individuals on simple ways to prevent being bitten by mosquitoes, reduce breeding around their homes and holiday accommodation, and minimise the risk of mosquito-borne disease transmission.

The city also runs its annual mosquito control program from October through March, as part of its mosquito management plan.

Management measures under the plan include monitoring mosquito populations through trapping, draining, and baiting stormwater gullies to prevent larvae from developing into adult mosquitoes, and much more.

For more information on Ross River Virus and mosquito prevention, visit the Department of Health website.

Hazmat fire in Midvale and Bellevue

LAST Tuesday emergency services were called to attend a factory fire at the Shire of Mundaring and the City of Swan which was confirmed to contain hazardous material.

Beaconsfield Avenue was closed due to the hazmat fire.

At about 10am in the morning, Department of Fire and Emergency Services reported the smoke was blowing in a south westerly direction towards Great Eastern Highway and Roe Highway.

DFES advised people in the area to stay indoors, keep doors and windows closed and to avoid the smoke.

Later in the afternoon, at about 12.30pm, DFES downgraded the alert as the fire was contained and controlled.

DFES advised people in the area were no longer going to be impacted by the smoke, but Beaconsfield Avenue remained closed.

The cause of the fire is unknown.



The factory fire in Perth's eastern suburbs. Picture: Sassella White/Swan View Chat Facebook page



eye on crime

Man charged over Midland wounding

MIDLAND detectives have charged a 38-year-old man with several offences in relation to an incident that occurred in Midland on Thursday, March 13.

About 5.25pm, police received multiple calls regarding a white Toyota Camry sedan being driven on the wrong side of Guildford Road in Guildford.

Several resources were diverted to the area, and a short time later, about 5.30pm, police received a report of a serious assault outside of a residence on Ferguson Street in Midland involving the driver of the white Toyota Camry.

Upon police arrival, officers located a 67-year-old man (the victim) with lacerations to his arm, and it will be alleged the accused was armed with a knife.

Police arrested the 38-year-old man at the scene, during which time it will be alleged he spat at an attending officer.

The victim was conveyed to Royal Perth Hospital for treatment of serious injuries.

The 38-year-old Beechboro man was charged with one count each of dangerous driving, with intent to do grievous bodily harm, do grievous bodily harm to another and assault public officer.

The victim and the accused in this matter are known to each other.

He appeared in the Midland Magistrates Court on Friday, March 14 where bail was refused.

He was remanded in custody to re-appear in Midland Magistrates Court on Friday, May 9.



Always in front!

Read the latest news online at

www.echonewspaper.com.au



Subscribe Now



Your FREE Local Weekly newspaper is also available from local outlets or subscribe NOW to get Echo News emailed direct to your inbox.

sales@echo-news.com | editorial@echo-news.com
Suite 4, 9 The Avenue, Midland | 9374 6666

Mundaring powerhouses present on community

GUANHAO CHENG

THE March Hour of Power featured talks about building and maintaining community from Shire of Mundaring President Paige McNeil and Bendigo Community Bank Mundaring executive officer Andrea Southam.

Ms Southam spoke first and shared stories from her own life about how she learned the importance of resilience, community and networking.

She said the challenging environment she was raised in and the lessons learned from navigating twists and turns in her professional and personal life helped her embrace change and reinforced her values.

"Over the years we faced profound loss," she said.

"Six immediate family members we loved were gone too soon.

"We lost two of my younger brothers to suicide, 11 years and 11 months apart.

"My brothers were our friends too, so their losses completely devastated me.

"It's a pain no words can truly describe, but through it I've learned the true depth of resilience.

"It has taught me how precious life is, how vital it is to check on those around us, and how kindness, sometimes as simple as a conversation, can make all the difference.

"In the darkest moments I also learned the power of community.

"When grief overwhelmed us, it was the people around us who lifted us back up.

"That's why I'm so passionate about giving back, because I know first-hand how much it matters."

Ms Southam said the most important lesson she's learned, especially in her role, was the power of connection.

"Success isn't just about what we accomplish, it's about the relationships we build

along the way," she said.

"Every person we meet has a story, a struggle and a dream.

"When we take the time to listen, engage and support each other, we don't just grow as individuals, we strengthen the communities around us.

"We encourage you to start a conversation, reach out to someone new and offer a word of encouragement.

"You never know what that connection could mean to them, or how it might change your own life in the process.

"Because in the end, success isn't just measured by what we achieve, but by the lives we touch."

Ms McNeil spoke about the paradox of progress which was the fact that mental health issues were still widespread despite people living in times of unprecedented safety and technological advancement.

She said a sense of community and the ability to contribute to that could hold the key to combating the anxiety, depression and loneliness that seemed to be widespread.

Ms McNeil shared that in a very real way, getting involved in community again was what propelled her into action against North Stoneville and saved her life.

TV coverage of the event led to a cameraman spotting a mark on her face, which they warned might be melanoma.

When Ms McNeil went to a doctor to check, it was confirmed to be melanoma, and was removed – though the experience left her in a mentally dark space.

"I had no purpose; I had shut everybody out and I felt alone even though my family were there to support me through this," she said.

"I felt hopelessness which was something I had never felt before."

Ms McNeil said it wasn't until commu-



Speakers Paige McNeil and Andrea Southam. Picture: Guanhao Cheng

nity members outside of her family such as Swan Chamber of Commerce president Mike Matich and chief executive officer Tom Smilovitis came that she opened up.

"Tom called me up one day and he said, look, I've been doing these Hour of Powers and we want to mix it up," she said.

"We'd like you to be our first guest speaker for the new format of Hour of Power.

"This opportunity came to me and gave me my confidence back.

"They surrounded me with a community and they didn't even know they were doing that.

"I got my confidence back. I started speaking again, and then I put my hand up for council.

"It shows that the power of community really can be the way that we can all heal, no matter what life throws at us."

Echo News asked both speakers, knowing what they know now, what would they have told themselves at their bleakest

points.

"That you are strong enough," Ms Southam said.

"And sometimes it isn't a choice – I knew I still had my mother and family, and I've been told by some people, 'You're so strong,' but sometimes that choice isn't yours.

"It's out of your hands, but you are strong enough."

Ms McNeil said for her, resilience and finding hope in times of darkness, came from leaving the door ajar just a bit even when the temptation was to shut everybody out.

Ms McNeil said there was an interesting phenomenon where sometimes it takes somebody outside of family to break down certain barriers and it was true of her experience.

"If I could tell myself back then something that I know now it's that you should never fully shut others out."

The Jewellery Centre MUNDARING

YOUR OWN LOCAL JEWELLER *Specialising in*

Repairs • Sales • Designs



The Jewellery Centre have jewellers on site at all times that can design new custom made jewellery as well as redesign old, unloved jewellery into magnificent new pieces.



If we don't have it ... We can get it. If we can't get it ... We'll just make it!



**Gents & Ladies
WATCHES
TOO!!**

**SEKONDA
& JAG**

Full range available.
2 year full warranty on all watches.

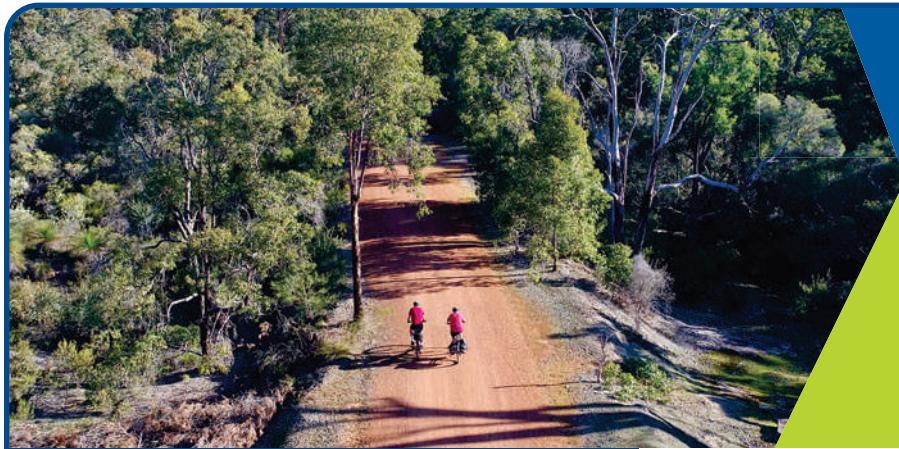


The
**Jewellery
Centre**

Your Trusted Jeweller

9295 1667

Shop 5, Woolworths Shopping Mall, MUNDARING



Shire President's Message

Hi everyone,

We're proud to call the Shire of Mundaring, with its rich and fascinating history, our home. That's why Council is excited to share our Local Heritage list, which highlights the buildings, landmarks and places that tell the story of our community's history. We're inviting you to be part of this journey as your local knowledge is invaluable in shaping how we honour our shared history. Visit engage.mundaring.wa.gov.au/heritage to view the list and share your thoughts. A big thank you to our local history groups for working with the Shire to celebrate and protect our heritage for future generations.



The Shire's application to make a submission on the proposed North Stoneville development has been approved. We welcome the opportunity to present the impact this urban townsite will have on our regional road network and the bushfire risk to people and property. Our submission will also explore the potential cost to ratepayers of managing the public open space and proposed conservation area. The full hearing is set for September 2025 at the State Administrative Tribunal.

School holiday fun is coming soon as we celebrate Youth Week WA from 10 to 17 April, recognising the positive contributions of young people in our community. Join us for activities like Dodge n Disco - a great way to connect with friends and stay active. Find out more at bit.ly/DodgenDisco

Are you curious about the wildlife on your property? Join our new Land for Wildlife program. Members enjoy expert advice, free workshops and access to our Wildlife Camera Loan Program to see what's living in your backyard! Your contributions will support conservation efforts and help secure funding for new projects. Become a champion for nature and help protect native wildlife while creating thriving habitats for the future. To find out more visit mundaring.wa.gov.au/landforwildlife

I hope to see you out and about enjoying the best of what the Shire of Mundaring has on offer!

Paige McNeil
Shire President

New Drop and Go Station at Red Hill Waste Facility

Shire of Mundaring residents now have another option for recycling with the introduction of a Drop & Go station at Red Hill Waste Management Facility.

This new service is part of an extension of the Shire's existing Containers for Change program, making it easier and more convenient for residents to recycle eligible containers. This new station complements the existing collection point at Coppin Road, giving residents even more options to recycle and earn refunds.

Drop & Go allows you to bag your eligible 10¢ containers, label them with your Containers for Change member number, and drop them off without the need to wait.



Your refund will be processed automatically via your nominated payment method.

The Red Hill Waste Facility is located at 1094 Toodyay Road, Red Hill and is open:

Monday to Saturday: 8am to 4pm
Sunday: 10am to 4pm.

Discover new Library resources

Our new Parent Study Station at Boya Library lets parents study while their little ones play safely beside them. A laptop is available for loan if needed, making it even easier to focus. To book, contact the libraries team on (08) 9290 6755 or email gills@mundaring.wa.gov.au.



DIY Home Energy Audit Kits are now available at Shire of Mundaring Libraries. Residents, as part of the Switch our Thinking Energy Efficiency Pilot Program (EEPP), can loan these kits to audit home energy use to find potential savings. Contact Mundaring or Boya Library for more information.



What's on

1 April Ordinary Council Meeting Tuesday 8 April

6.30pm
Shire Administration Centre



The agenda is available on the website, Administration Centre or at our libraries. Meetings will be live streamed via the Shire's website mundaring.wa.gov.au/council-livestreams-and-recordings

2 Djeran: Dry Days, Dewy Night presented by Simon Cherriman Monday 7 April

10.30am to 12pm
Boya Community Centre



Join wildlife ecologist Simon for an environmental education session on Djeran. Bookings essential via events.humanitix.com/070425.



Dodge 'n' Disco Youth Event

Friday 11 April 2025
5.30pm to 8.30pm
Swan View Youth Centre

Calling all 12 to 17 year olds to join us for a night of dodgeball and dancing! Show off your dodgeball skills, then hit the silent disco or relax in the chill-out zone. Don't miss the fun!

Bookings essential via Eventbrite
bit.ly/DodgenDisco



Perth Hills' young scientist accepts research award

CINDY CARTOJANO

PERTH Hills' Ellie Simpson is the 2025 recipient of the annual young professionals in agriculture forum's Noel Fitzpatrick medal for her research into soil acidification in the wheatbelt.

The Edith Cowan University Bachelor of Science undergraduate student said she's a keen gardener and has always been a soil nerd.

"I'm really into soil health and looking at plants as indicators of that," Miss Simpson said.

"And I was lucky enough to know farmers in the Wheatbelt before I undertook the project.

"One of their big concerns was pH and it's one of those master variables where if it's too low, it can affect so many things."

Through her research, Miss Simpson aimed to identify trends and determine farm management factors which contributed to changes in soil pH.

She visited six farms between Bunjil and Latham in the northern Wheatbelt during the 12-week research period.

Miss Simpson found two key environmental and management factors affecting soil pH were rainfall trends and lime application.

Between 2016 and 2023, Miss Simpson found a 35 per cent reduction in annual rainfall, and between 2017 and 2024, lime application rates decreased from 29 tonnes per hectare to 2.05 tonnes per hectare.

She hopes to promote more sustainable farming practices through her research.

Some of the key challenges for sustainable soil management Miss Simpson listed were climate change and rainfall decline, nutrient management, subsoil acidity and aluminium toxicity and spatial variability.

"At the moment, there's so many things like climate change and soil health that we're worried about," she said.

"For farmers, it's probably nice to know that there are scientists out there who are really passionate about it and are wanting to help.

"If I could publish a paper from this research, that would be amazing."



Young researcher Ellie Simpson.

At the end of her research period, Miss Simpson made four recommendations for sustainable agricultural practices: implement precision time application, develop soil type-specific management strategies, address nutrient imbalances and continue and enhance current beneficial practices.

Miss Simpson said although she's noticed a lot of men in the top roles, she encourages girls and women who want to work in STEM to keep an open mind about the industry.

"At least half of my lecturers are women and they've been really good role models.

"So many doors have opened up and there's so much work in environmental science and STEM.

"It's definitely a worthwhile field to go into.

"I'm lucky that this is my passion, well and truly."



The Disability Events community expo aims to connect people living with disabilities to service providers and give support workers networking opportunities.

Midland disability expo 2025 event

A FREE event aiming to help connect people living with disabilities or those providing disability support with service providers will be held on March 28 from 10am to 2pm at the Midland town hall.

The expo will offer a variety of services and products, from assistive technologies to support services to assist attendees in helping their experience of using NDIS become easier.

Disability providers in the area will also be in attendance to answer questions, provide expert insights and guide attendees in achieving their NDIS goals.

The first 200 attendees will also

receive a free coffee from Eloma Care.

The Midland Town Hall is fully accessible with wheelchair access available.

Photography and video recording will occur during the event for promotional purposes.

Visitors preferring not to be photographed are encouraged to inform a team member upon arrival.

For more information, interested individuals can contact The Disability Events Community at hello@thedec.com.au or call 0493 993 320.

Tickets are free but registration is essential to secure a spot at the event.



Members of the Bassendean Bowling Club from the 2023-24 season.

Bassendean Bowling Club's 90th birthday

ON Sunday, March 30 Bassendean Bowling Club will be celebrating its 90th anniversary and they are inviting all members, past and present, to join in with the festivities.

There's no entry fee to the event but food and drinks are available for purchase at the venue.

The event kicks off at 3pm with presentations from the club, and from 4pm there will

be a variety of food trucks, ice-cream from a Mr Whippy van, children's entertainment, face painting and a live performance from Chris Murphy.

Those interested in attending are encouraged to bring a picnic blanket to sit around the greens and enjoy the celebration.

To RSVP to the event, visit <https://www.facebook.com/share/1AxjRNuTQ1/>

SHOP
LOCAL
BUY
LOCAL

SUPPORT
LOCAL

"Lets keep local people in work"

Support your local Business

www.echonewspaper.com.au



Discover our digital edition online
www.echonewspaper.com.au

ENTERTAINMENT & GIG GUIDE

Your local Gig Guide

Thurs March 20

Hemingway & Co
Blues Thursday.
From 6.30pm. Free.
6/7095 Great Eastern
Highway Mundaring

Fri March 21

Settlers House York
Graeme Fisher.
From 6pm. Free.
Avon Terrace York

Mahogany Inn & Distillery

Ben Graham.
6pm-9pm. Free.
4260 Great Eastern
Highway
Mahogany Creek

Parkerville Tavern

Intangible.
6pm-9pm. Free.
6 Owen Road
Parkerville

Bassendean Hotel

DJT-YAGO.
From 8pm. Free.
25 Old Perth Road

Lyric's Bar

Laneway Bar.
Charlie Scott Duo.
From 7pm. Free.
22 Lyric Lane Maylands

Sat March 22

Settlers House York
The Jukes of York.
From 6pm. Free.
Avon Terrace York

Mahogany Inn & Distillery

Rhay Rom and Chantel.
6pm-9pm. Free.
4260 Great Eastern
Hwy Mahogany Creek

Hemingway & Co

Acoustic Saturday
From 6.30pm. Free.
6/7095 Great Eastern
Highway Mundaring

Bassendean Hotel

Blues - Travis Aron.
8.30pm-Late. Free.
25 Old Perth Road
Bassendean

Parkerville Tavern

Jump the Gun Duo.
From 6pm. Free.
6 Owen Road
Parkerville

Mt Helena Tavern

Pentology.

From 6pm. Free.
900 Keane Street
Mount Helena

Lyric's Bar

Laneway Bar.
The Tryouts (NSW).
From 7pm. Free.
22 Lyric Lane Maylands

Sun March 23

Bassendean Hotel

Gemma Luxton Duo.
From 2pm. Free.
25 Old Perth Road
Bassendean

Parkerville Tavern

Tod Johnston & Peace-
Love.
From 4pm. Free.
6 Owen Road
Parkerville

Mahogany Inn & Distillery

Mel and Fenton.
4pm-7pm. Free.
4260 Great Eastern
Hwy Mahogany Creek

Lyric's Bar

Laneway Bar.
The Pick Me Ups.
From 2pm. Free.
22 Lyric Lane Maylands

Childlow Tavern

Live Music.
12.30pm - 3.30pm.
Free. 4 Thomas Sreet
Chidlow

Tues March 25

Hemingway & Co

Jazz Tuesday.
From 6pm. Free.
6/7095 Great Eastern
Highway Mundaring

Mahogany Inn & Distillery

Smooth Grove.
5.30pm-8.30pm. Free.
4260 Great Eastern
Hwy Mahogany Creek

Wed March 26

Childlow Tavern

Muso Jam Night.
7.30pm till late.
Free. 4 Thomas St
Chidlow

Thurs March 27

Hemingway & Co

Blues Thursday
From 6.30pm. Free.
6/7095 Great Eastern
Highway Mundaring

Lifeline helps Swan View student with internship



Tammey Candeloro of Swan View at Lifeline WA whose placement gave her on-the-job experience.

LIFELINE WA is well known for helping people in their hour of need but for Swan View's legally blind Tammey Candeloro it wasn't the organisation's crisis support line that came to her rescue.

It was the agency's willingness giving the then 31-year-old a placement at the suicide prevention agency to complete her bachelor of counselling when no other workplace would give her a chance.

The two-year internship was the glimmer of hope Mrs Candeloro, who was born with congenital cataracts, needed after years of discrimination threatened to derail her education and her ability to forge a career.

"Lifeline WA was the only workplace willing to focus on my abilities and not my limitations which was so empowering," she said.

"That placement gave me on-the-job experience and allowed me to practice the theory and practical skills I had embraced while studying for my degree."

Sadly, after completing her degree in 2008, she was still unable to find a job, with countless employers believing it was too hard to accommodate her impaired vision.

After she married she focused on motherhood as a mum of two before a cruel blow saw her lose her left eye to cancer in 2015.

Twelve years after completing her placement and having lost a close friend to suicide, Mrs Candeloro decided to return to Lifeline WA - this time to train as a volunteer crisis supporter.

"Once my children started school and I had more spare time up my sleeve, I wanted to give back to the community," she said.

After 170 hours of crucial training, she became a fully qualified telephone crisis supporter helping Western Australians in their time of need.

"My time as a crisis supporter increased my level of empathy, my problem-solving skills and out of the box thinking."

She believes the critical skills and experience she gained helping those in need were vital to her landing her first ever job in December last year as an alcohol and other drugs counsellor and educator.

"Without volunteering at Lifeline WA I would have never been able to enter the workforce as nobody wanted to hire someone who couldn't see."

"They made my computer screen and cursor larger to make it easier for me to use through a setting which would activate as soon as I logged into my account."

Lifeline WA chief executive officer Lorna MacGregor said the agency prided itself on building a diverse workforce and disability isn't a barrier to joining its volunteer crisis supporter team.

"In fact, people like Tammey who have faced their own challenges can bring a special level of understanding and empathy to the role of crisis supporter," she said.

"Modifying aspects of the workplace environment was an easy way of ensuring we did not miss out on the skills and compassion Tammey could offer to people contacting us during their darkest and often lonely hours."

Lifeline WA has been included in the Diversity Council Australia's annual list of inclusive employers for 2024-2025.

"We are committed to providing a safe and inclusive environment to ensure that our employees and volunteers, regardless of their abilities and backgrounds, are treated with respect, dignity and empathy," Ms MacGregor said.

Lifeline's 24/7 telephone crisis support service is available on 13 11 14, text 0477 13 11 14 or online chat at lifeline.org.au/crisis-chat

Suicide prevention fundraiser exhibition

ARTIST Sandra Leach is holding a solo exhibition, Natures Calling, in partnership with Mates in Construction (MIC) at the Swan Settlers Market to raise funds for its suicide prevention program.

The event will be held on March 29 and 30 from 9.30am to 4.30pm at the function room.

Entry into the exhibition is a \$2 gold coin donation, which will go towards the MIC program and also into a draw to win the Tranquil Wungong art piece by Ms Leach, valued at \$410.

Ms Leach said she has done administrative work in the construction industry for 20 years and wants to promote the program which involves volunteers and workers going to various sites to provide training and support to construction workers.

"Sometimes talking to a stranger in confidence is easier than talking to family, friends and co-workers about what you are facing," she said.

Since she was 10-years-old, Ms Leach said she's always had a passion for drawing and painting.

"At the age of 18, I learnt how to paint with oil on canvas at Venus Art Gallery in Highgate."

"I have been painting for 42 years."

Her piece, Tranquil Wungong, was inspired by her time in the Wungong bush and was painted in 1997 using oil paints over a six month period.

Ms Leach said the prize piece is a signed open edition fine art print, stretched on a 570 x 840mm canvas and made in WA.

To learn more about the event, visit <https://www.swanvalley.com.au/products/solo-artists-exhibition-at-swann-settlers-market>



Swan Settlers Market hosts Sandra Leach solo exhibition to raise funds for suicide prevention.

Promote your event



SCAN ME
ENTERTAINMENT
& GIG GUIDE

OPTION 1 Large Display Banner

Linking directly to your website or ticketing outlet. \$100 p/w

OPTION 2 Half Display Banner

Linking directly to your website or ticketing outlet. \$50 p/w

OPTION 3 Free Text Listing

Contact Peter for more information

on 9374 6650 or

peter.lewis@echo-news.com

www.echonewspaper.com.au

ECHO NEWS

ADVERTISING FEATURE

Support Local



A Degustation Dinner Under the Stars – A Night of Culinary Magic at Amaroo Retreat & Spa

On Saturday, April 5, Amaroo Retreat & Spa invites you to experience a once-in-a-lifetime dining event, blending luxury, culture, and the breathtaking beauty of the Perth Hills night sky.

The evening begins with a glass of chilled sparkling wine on arrival, allowing guests to unwind as the golden hues of sunset melt into twilight.

As you take your seat, the haunting hum of a live didgeridoo performance will set the tone for a truly immersive experience—one that evokes the sacred spirit of the land, much like the exclusive dining experiences found at Uluru's Tali Wiru.

Our Executive Chef has curated an exquisite multi-course degustation menu, showcasing the finest local ingredients in dishes designed to tantalize the senses. Each course is thoughtfully paired with premium wines and introduced with personal insights into its inspiration and origins.

Set beneath a canopy of stars, this is more than a meal—it's an unforgettable journey of taste, culture, and connection to nature.

Spaces are limited for this exclusive event. Book now to secure your place at Perth's most magical dining experience. Call 62444800 www.amarooretreat.com.au

\$199 - 6 courses

\$259 - with wine pairing

AMAROO RETREAT & SPA PRESENTS



2025
DEGUSTATION
DINNER



'Under the Stars'

Saturday 5 April, 2025
at 6pm

\$199 per person (no wine pairing)

or \$259 per person (with wine pairing)

DEGUSTATION MENU

Crab Roll – blue swimmer crab,
citrus mayo, house-made milk bun.

Wood fired persimmon,
stracciatella, hazelnut

Mussels on toast, saffron and potato

Braised beef short rib, Jerusalem
artichoke, pickled onions

Strawberry and hibiscus

Whisky poached pear,
date and honey sponge, caramel

Live didgeridoo performance
on the night – truly magical

Direct
Booking Link



Full payment required at booking

1200 Alison St, Mt Helena | 08 6244 4800

www.amarooretreat.com.au

Look out for the **ECHO** NEWS

SINCE 1985

AVELEY:

Aveley Newsagency
Cnr Millhouse Rd &
Egerton Dr

Aveley Shopping Centre
Cnr Millhouse Rd &
Egerton Dr

BASSENDAN:

Bassendean Library
46 Old Perth Rd

Bassendean Shopping
Village
Cnr West & Old Perth Rd

BEECHBORO:

Beechboro Library
332 Benara Rd

BOYA:

Boya Community Centre
Clayton Rd & Scott St

BULLSBROOK:

Bullsbrook Newsagency
2544 Great Northern Hwy

CHIDLOW:

Chidlow Growers Market
570 Rosedale Rd

Chidlow Postal & Home
Centre
Thomas St

DARLINGTON:

Darlington Liquor
4 Montrose Ave

EDEN HILL:

Eden Hill News & LPO
S3/85 Walter Rd

ELLENBROOK:

Dome

36 Main Street

Espresso Coffee

Ellenbrook Central

Ellenbrook Central

204 Pinaster Rd
(cnr The Promenade)

Tania Lawrence Office

3/38 Main St

Total Health Ellenbrook

3/42 Main St

Woodlake Village S/Centre

Sunray Circle

FORRESTFIELD:

Edinburgh Road S/Centre

Edinburgh Rd

Forrestfield Forum

20 Strelitzia Ave

Walridge Country Estate

Berkshire Rd

GIDGEGANNUP:

Gidgegannup News

Toodyay Rd

GLEN FORREST:

Glen Forrest Post Office

Railway Pde

IGA Glen Forrest

Hardey Rd

GUILDFORD:

Guildford Newsagency

James St

HELENA VALLEY:

Helena Valley Lifestyle

Village

2340 Helena Valley Rd

IGA Helena Valley

Torquata Blvd

HERNE HILL:

Herne Hill Village Lottery
Centre

777 Gt Northern Hwy

Swan Settlers Market

124 Lennard St

HIGH WYCOMBE:

High Wycombe Village

Shopping

Kalamunda Rd

Newburn Newsagency

47 Newburn Rd

The Village Supa IGA

120 Wittenoom St

KALAMUNDA:

City of Kalamunda

Railway Rd

Crabbs IGA

12 Canning Road

Kalamunda Centro

S/Centre

39 Railway Rd

Kalamunda Library

7 Williams St

Kalamunda Newsagency

Haynes St

Nightingales Pharmacy

123 Canning Rd

Jack Healey Centre

21 Mead St

KOONGAMIA:

Koongamia Store

5/21 Jinda Rd

LESMURDIE:

IGA Lesmurdie

241 Lesmurdie Rd

Sanderson Road S/Centre

Sanderson Rd

MAHOGANY CREEK:

Begonia Pets

5895 Great Eastern Hwy

MAIDA VALE:

Hill View Public Golf
Course

350 Kalamunda Rd

Maida Vale IGA

Unit 2/31 Maida Vale Rd

Zanthorrea Nursery

155 Watsonia Rd

MIDLAND:

Baptistcare

1A North St

Centrepont S/Centre

307 Great Eastern Hwy

City of Swan Admin. Office

Morrison Rd

Crooked Spire

71 Victoria Street

Echo News Office

4/9 The Avenue

Greg's Discount Drug Store

243 Great Eastern Hwy

IGA Supermarket

295 Great Eastern Hwy

MIDLAND LIBRARY

45 Helena Street

Midland Gate S/Centre

Food Hall Entry

Real Estate Plus

Shop 2/5 Junction Parade

Swan Valley Fresh Markets

Cnr Morrison Rd & Keane

St

The Ritz Cafe

16/27 Old Great Northern

Hwy

MT HELENA:

IGA Mt Helena

McVicar Pl

MUNDARING:

Brookwood Realty

2/1 Mundaring Weir Rd

Coles Supermarket

Great Eastern Hwy

Hills Fresh

7110 Great Eastern Hwy

Mundaring Newsagency

7295 Great Eastern Hwy

Mundaring Village

Shopping Centre

7295 Great Eastern Hwy

Mundaring Visitors Centre

7225 Great Eastern Hwy

Shire of Mundaring

7000 Great Eastern Hwy

PARKERVILLE:

Parkerville General Store

2170 Seaborne St

SAWYERS VALLEY:

Atlas Fuel

10895 Great Eastern Hwy

Caltex Service Station

96 Great Eastern Hwy

SOUTH GUILDFORD:

IGA Waterhall

9 Waterhall Rd

STONEVILLE:

Stoneville Fresh Food

Market

5345 Richardson Rd

STRATTON:

Stratton Park S/Centre

O'Connor Rd

SWAN VIEW:

IGA Swan View

139 Morrison Rd

Swan View S/Centre

Marlborough Rd

THE LAKES

The Lakes Roadhouse

Great Eastern Highway

UPPER SWAN:

Vibe Roadhouse

1447 Great Northern Hwy

WEST SWAN:

Burk West Swan

West Swan Rd

WOOROLOO:

Wooroloo Liquor

& General Store

3775 Government Rd

YORK:

York Co-op

Avon Terrace

Castle Hotel

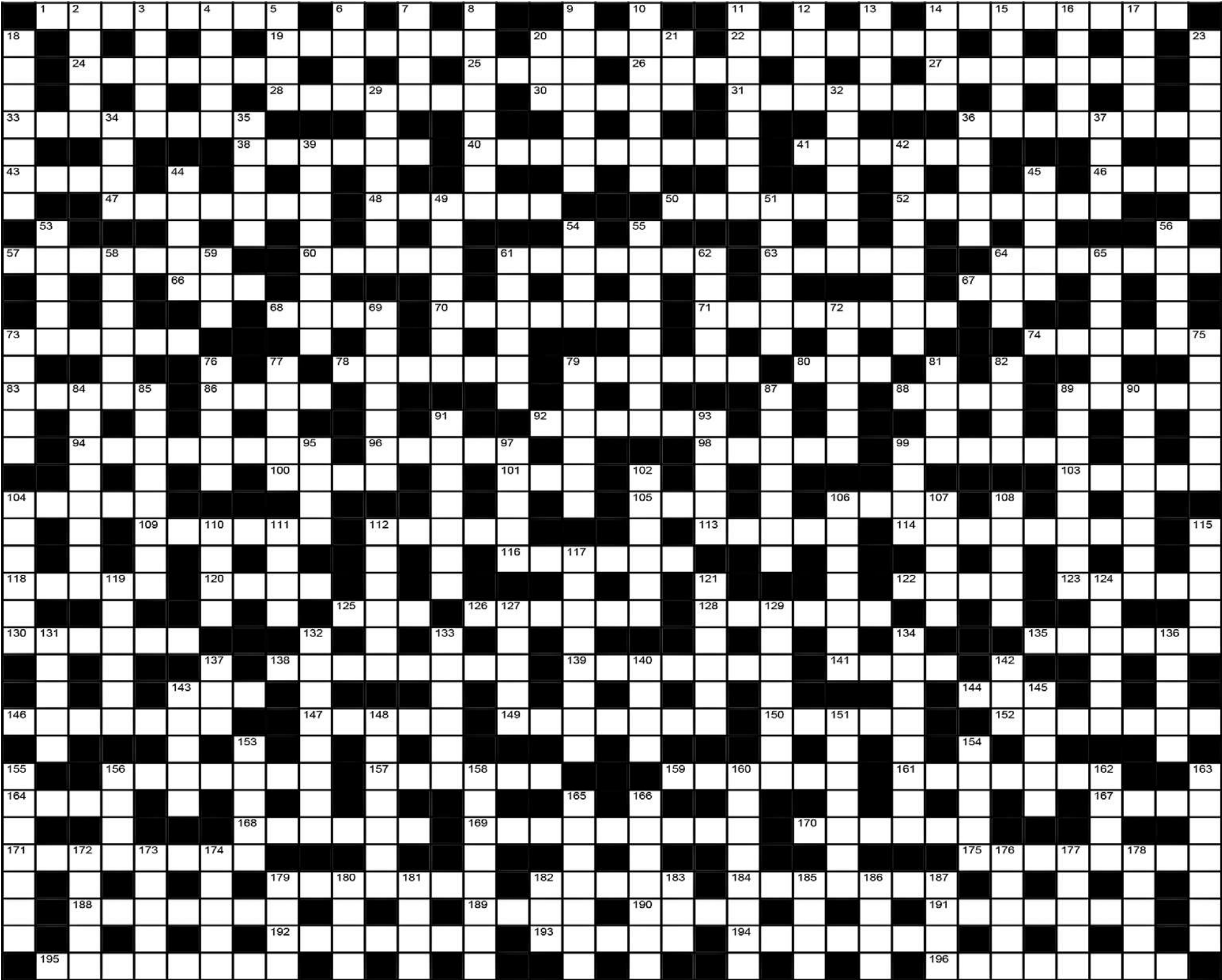
Avon Terrace

Privately owned & proudly independent

ECHO

Mind Boggler Crossword

1209



- ACROSS**
1 Strong inclination
14 Genuine (4,4)
19 Alligator pear
22 Hawaiian guitar
24 Petty
25 Give up dependence
26 A branch
27 Male fowl
28 Exaggerated drawing
30 Island east of Java
31 A hint
33 Bird
36 Antlered animal
38 A visual manifestation
40 Unreasonable
41 Annoy
43 Otherwise
46 African river
47 Meat pins
48 Ramblers
50 Zodiac sign
52 Devout petitions
57 Grassland
60 European country
61 Volcano openings
63 Lawn prickle (coll)
64 Fervour
66 A garland
67 Close friend
68 Droopy
70 A chemical test
71 Successful reputation

73 Ten years
74 Bell sounds
78 Holding part
79 Convivial
80 Coloured fluid
83 Make fun of
86 Percussion instrument
88 Historic tale
89 River mouth
92 Bets
94 A plunderer
96 A lock of hair
98 Eagle's nest
99 Heavenly beings
100 Plies the needle
101 A sheep
103 Saloon car
104 Do wrongly
105 A newt
106 A platform
109 Blood carrier
112 Pips
113 A barrage of gunfire
114 One secretly damaging
116 Foreign-looking
118 A welcome visitor
120 Amount of bread
122 Actor's part
123 African country
125 A joke
126 African fly pest
128 Lone dweller
130 Firm
135 Concealed marksman
138 High-pitched voice
139 Patent

141 Merriment
143 Uncooked
144 A lout
146 King Arthur's court
147 A secret store
149 Poster
150 Escape artfully
152 Arbitrator
156 Form an opinion
157 Holiday destination
159 Affectionate touch
161 Bacon slices
164 Scarce
167 Window glass
168 Regarded as true
169 Large spider
170 Placid
171 Allies
175 Going stale, as water
179 A token of remembrance
182 Ship's poles
184 Court fools
188 Absolute peace
189 Look over
190 A ballet skirt
191 Ordinary
192 Proof of payment
193 A black bird
194 Type of mollusc
195 Continues steadily
196 Imagines guilty

DOWN
2 Additional
3 Coldness
4 Extra-terrestrial
5 A powder

6 Cause to flow
7 Angel's headwear
8 Unfavourable part
9 Caretaker
10 Tuneless
11 Small workstations
12 Fortune
13 Prefix - half
14 Floating ice lump
15 Used for trapping
16 Japanese bed
17 Mournful song
18 Liqueur flavour
20 A feline
21 Title of respect
23 Horse shoer
29 Windpipe
32 Communication with
34 Is regretful
35 Judges hammer
36 Become less tense
37 Lairs
39 A hitman
42 Young trees
44 A mass of nacre
45 A decoration
49 Family members
51 Friend (coll)
53 A narrow boat
54 Small sized restaurant
55 An octopus' limb
56 Make illegal copy
58 Luxuries
59 A snake-like fish
61 Place of worship
62 A brown pigment
64 Animal foot
65 Hallowed place

69 Heavenly bodies
72 A mixed lot
73 As before
75 Type of medicine man
76 Perfect
77 Renown
79 Weighing devices
81 Daybreak
82 Receptacle for blooms
84 Cut off a limb
85 Large pachyderm
87 Bearing crops
89 Files
90 Damaged, as stockings
91 A meal course
93 Chairs
95 Depend
97 An inward feeling
99 Pivotal point
102 Cooking formula
104 Canal boats
106 Drenching
107 A reception room
108 Celestial body
110 Cash box
111 Bellow
112 Shallow boating hazards
115 Of the moon
117 Giving a choice
119 In short supply
121 Burial cloth
124 One of a kind
127 Pry
129 Amount left over
131 A gemstone
132 Messenger bags
133 Emphasise

134 Practise
136 A live coal
137 A gentle blow
140 Small glass container
142 A paddle
143 A famous lover
145 Great bodily heat
148 Funeral procession
151 A way down
153 Ladder steps
154 Cricket trophy
155 Small drop
156 Animal hide
158 Far-flung bases
160 Rearrange
162 Gyrate
163 Insects
165 Huts

166 Speak haltingly
172 Projectile's distance
173 Boringly studious types
174 Wanders
176 Levels
177 Iced as a cake
178 Highly skilled
179 The red planet
180 Deride
181 A fastener
182 Damage
183 Earth's light
185 Cleansing agent
186 Early "Queen of Jazz", ... Fitzgerald
187 Drains
- Crossword Solution 1208 from 14 March, 2025
- MILESTONE D PANDA H PHOBIA SYNCHRONISE
A M O AWARE A STELA V U T A E O M
R SUTURES N GAMUT A P EARSHOT LULLED B
OPTS R EDGES A I DRYER P P L I L E A R
O R L I B E L L O S I R I S R S A R T G A L I L E O C A
N E O N S P E D I C T E D U C E C H A R G V T A L C
E L L S T R A N D I I T E R M I T T E S T U I P A R R I E D O E
D E L T A U E R A T O I F P R O O E A I T E M S
X F U R L L D P R I M I T I V E M A U L U N P L U G U
S H E B A E L I T E U O N E B B S R H E X I S T
O R A F T R M A S S E S H E A V E P L A T Y P U S T
E R O T I C S T A H A G E L A T O U T S T A Y E D
O T H S N O O P S R E C H O L B A N I E R S I T R
R G A Z E B O U A D E B U N K G H E T T O A E R R O R S N
E L I T B I S O N S R S A R E T R E A T A U S A
T D A P P L E R E C U S A N T M E R I N O R E O P E R A S D
R O D E R R A N I A N A L I V E P L A T E A U N T H A I
O D Y S S E Y B G A R N E T C G E M I N I C U C A V A L I E R
I T H B L U N D E R E O T T E R Y U G L N I
E T C E T E R A N T E N M I T Y O A G R E E D U P O N T I A C
R Y O T R N E C T A R S S W E E T E N D A L I P I D I E
N D E F E N D A L T A I L O R S A L I V A T E C O E R C E U
I C E O I M P A S S E E E T N W R I S T O A I L
E D O P R I T N A D J U S T R E M E D Y T R U N W E L L O
C G E R S I L V E R R O V A L I A G E N T S I E A
C O G N A C T I K I T B A G S K I G L O S C A R A B
A T E N T A C L E A D A G E M Y O P I A C P I E R B
C R U S T R U A O N E A P O D W E L L A V O I D
S E N D E A R F L A X P A R A M O U N T O N U S E D R
R E S I N S R L E S T T R T U N I C L E T A P
A L D R O P P E R E T N A H E S I T A T E E R M I N E A E
D O O R E A N O N G B L A R E I R I S H E E S C A T
I P O F F E S E T S I N F O Y A V I A R Y U S T A M P K U
A G E S R S T A T O W E L A A A D M I T E H E A L
T S A V A G E P E N N A M E I T K U D O S A A N I S E E D A
O I T T R R G U R H O N E E K I N G S I R A N
R E P L E N I S H E S E N T R E E N B U S T S E H O U S E B O A T

ARTS & ENTERTAINMENT

Swan-based artist puts love for dogs on display

FOR the month of March, Swan-based artist Jessie Radloff will have her exhibition *Jessie and Her Dogs up at the Midland Library.*

The exhibition features a range of paintings, drawings, lino prints and a selection of Jessie's greeting cards - all about dogs.

"I got into art because it was a good way to show people how important dogs are," Ms Radloff said.

"They are good companions and give and receive lots of love."

She said her favourite thing about being an artist was being able to share her love for dogs with other people.

Ms Radloff has won awards for her designs, including the Soroptimist International art award in 2023 and As We Are high commen-

dation award in 2022.

Ms Radloff is an emerging artist from Guildford with lived experience with disability and she is also a business owner.

She sells t-shirts, tote bags, tea towels and greeting cards featuring her original designs of dogs.

Some of her stockists include Fremantle Arts Centre, DADAA Midland and Building Friendships in Kalamunda.

Ms Radloff said she hopes to continue to show people how special dogs are and to create more merchandise to sell.

Jessie Radloff at her exhibition in Midland Library.



Birli Gallery to host immersive art exhibition



John Ned Kelly. Picture: Dale Kelly

CINDY CARTOJANO

MIDLAND'S Birli Gallery will be hosting *On the Land: A Stockman Series*, an immersive art exhibition by John Ned Kelly from April 12 to May 2.

Mr Kelly said he's worked on the series for more than five years and it is still ongoing.

"I'll never complete it," he said.

"We're just interrupting part of the series at this stage.

"The Stockman series will go on forever."

Born and raised in the Wheatbelt, Mr Kelly said it was inevitable that his paintings would be a reflection of his life at the farm.

He said he wants to share parts of country life to those in the city by telling stories through his paintings.

"There's one there with a guy chasing down a cattle that's broken loose from the pack and he's had to come off in a chase.

"As much as I can, I like to put a bit of humour in there as well."

Though Mr Kelly lives in the city now, he enjoys reminiscing on his time in the country.

"It's a great place to grow up as a kid," he said.

"It's very grounding and it gives you morals and rules that you carry on through your adulthood."

The exhibition will combine art, sound, scent and touch to give the audience an immersive experience into rural Australia.

"The exhibition celebrates the resilience, diversity and ingenuity of rural communities, with a special emphasis on First Nations contributions to Australia's agricultural history," a Birli Gallery spokesperson said.

A Q&A session with Mr Kelly will also be held at the exhibition launch, which starts at 6pm.



1. Fence sitters, 2. Billy, 3. I'm sorry, 4. I'm getting outa here, 5. Taking a break, 6. Couple of stragglers.

ECHO Trades & Services

9374 6666
classifieds@echo-news.com
BOOK ONLINE: www.echonepaper.com.au

Airconditioning & Refrigeration

ACR
Lic. No. AU05609
Local Company
Local Prices
Reliable & Efficient
Pensioner Discounts
For all your airconditioning & refrigeration service & installation
9454 9945

Bobcats

MIDLAND BOBCAT HIRE
BOBCATS, 8 & 12 TON TIPPERS, MINI EXCAVATORS
Free no obligation quotes and advice
Russell & Lynn Edwards
Owner/Operator
Russell: 0417 957 597
russlynn4@bigpond.com

BOBCAT - TRUCK EXCAVATOR ROCKBREAKER
• Bobcat works, Earthworks & Truck Hire
• Driveways - Removals / Prep / Construct
• Excavation / Trenches / Drainage / Soakwells
• Shed & Tank Pads / Rockbreaking & more ...
Reliable Service
DAVE 0417 096 614
DW Cartage & Earthworks

Brickpaving

LINTON CONTRACTING SERVICES
PAVING - STONE WORKS
• All types of paving & stonework
• Repairs etc
• Pressure cleaning
• No job too small
• All work guaranteed
ROB 0400 128 951

Carpentry

MORGAN CARPENTRY & MAINTENANCE SERVICES
ALL ASPECTS OF CARPENTRY & MAINTENANCE WORK
• 15yrs commercial & residential experience • Insured
• Fully qualified, professional & reliable • No call out fee
• Full police clearance • Pensioners discount
Call Kevin **0450 538 596**
www.morgancarpentry.com.au e:Kdd.morgan@hotmail.com

Carpentry • Joinery • Cabinetmaking and Home Maintenance Services
• Doors • Decks • Skirting • Sash Windows
• Robes • Kitchen Installations
• Flatpicks • Pergolas • Furniture Repairs
Pensioners Discount Fully Qualified
Free Quote Call Mal **0400 250 761**

CARPENTER/CABINET MAKER
Sash Window Repairs / Renovations, Kitchens, Laundries, Robes & Vanities made and fitted. Doors, Frames & Architraves. Skirting & Shelving. 40 years experience. NO JOB TOO SMALL. Call Terry
0401 743 027 / 9295 0797
telcocarpenry@bigpond.com

Ceilings

CEILINGS & WALL RESTORATION
ALL SMALL JOBS
ALL REPAIRS & NEW ADDITIONS
23 YEARS EXPERIENCE
9295 2041 OR 0402 270 688

CA INSTALLATIONS
• Ceilings & Walls • All Facets of Ceiling Work
• Domestic & Commercial • Office Partitioning
All Reno Work Local and Loyal
0409 953 369

Concrete

B.C. CONCRETE DESIGN
Cracked Pea Gravel/Exposed Aggregate
Crossovers • Shed Floors • Drives
House Extensions • Patios
Bobcat & Truck
Call Anytime **0457 611 348**

Concrete

SUNJICH'S CONCRETE
• Bobcat - Truck and Compaction
• From Prep to Completion
FREE Quotes All Areas
Call Zelko
0417 902 301

TIGER CONCRETE
FREE QUOTES • NO MESS NO FUSS
Quality work, all types of concreting
Bobcat and Truck
Mike 0407 989 927

Earthmoving

EARTHWORKS, DRAINAGE and PLANT HIRE
Excavators, Tipplers, Skidsteer, Loader, Grader, Roller
• Excavations, Earthmoving, Rock Breaking
• Driveways & Asphalt
• Culverts & Drains
• Sand Pads, Aggregate Supply
Call: Aedan **0474 840 418**
info@groundforcecivil.com.au www.groundforcecivil.com.au

Electrical

Mrs Fixit!
Female Electrical Contractor
Free Quotes & No Call Out Fees
TV / ANTENNAS • LIGHTS • POWER POINTS
SAFETY SWITCHES / RCD'S • SMOKE DETECTORS
REPAIR & MAINTENANCE • HOT WATER SYSTEMS
Seniors / Pensioners / HCC Discounts
MARDI GLADWELL 0430 035 345

Andrews Electrical Systems
Established 25 years • High Quality Guaranteed
Residential • Electrical Installations
Commercial • Electrical Maintenance
Industrial • Air Conditioning
• Telephone and TV
• CCTV and Data
Call Andrew **0420 956 432**
Email: andrewsesperth@gmail.com

Fencing

LINTON CONTRACTING SERVICES
FENCING
• All types of fencing
• Fencing repairs
• Old fences removed
• No job too small
• All work guaranteed
ROB 0400 128 951

Firebreaks

FIREBREAKS
0474 840 418

Gardening

FULL-BLOWN
Garden Maintenance
ABN: 77 592 171 029
✓ Rubbish Removal
✓ Mulching
✓ Lawn Mowing
✓ Planting
✓ Weeding
✓ Pruning
✓ Hedging
✓ Yard clean ups
✓ Ride on mowing
✓ Spraying
✓ Bush fire ready clean ups
Fully Insured
FREE QUOTES
Damien **0431 011 369**

Gutter Cleaning

Bobtail Gardens Gutter Cleaning
Gutter Vac Services
• Fully insured, registered business
• Fully self contained vac truck
• All waste removed from your property
• Obligation free quotes, Senior discounts
Phone Phil **0429 179 577**

Handyman

• Fencing • Gutter Cleaning • Shelving
• Furniture Repairs • Painting • Tiling • Paving
• Carpentry • Property Maintenance
• High Pressure Cleaning
Almost anything - just ask!
Pensioners Discount Free Quote
Mal **0400 250 761**

allwork HANDYMAN SERVICES
SPECIALISING IN ALL INDOOR AND OUTDOOR HOME MAINTENANCE
• Landscaping • Flat Packs • Painting
• Limestone Walls • Reticulation • Brickpaving
• Gutter Cleaning • Carpentry • General Repairs
Contact Trevor **0424 130 555**

Limestone

Michael's Stonework
Limestone & Coffee Rock
Small Retaining Walls, Steps, Pillars, Stone Pitching, Garden Beds
For a FREE quote & reliable service call:
0427 190 273

Massage

AMY'S
CHIANG MAI MASSAGE
Open 7 Days
8.00am-6.00pm
Thurs: 8.00am-9.00pm
Health fund rebates available
9295 0247
7125 Great Eastern Hwy Mundaring

Painting

PP Maintenance
ABN: 86 642 331 437
PAUL 0477 660 703
paul.percudani@outlook.com
• Painting (Interior & Exterior) • Demolition
• General Repairs • Pressure Cleaning
• Restoration Home or Office (pre sale or lease)

JIM OLSEN

Painter & Decorator
FREE QUOTES - QUALITY WORK
Reg# 3749
0430 339 118

WA COMPANY PAINTING
REPAINTS • INTERIOR • EXTERIOR
CALL TREV **0414 289 145**
WWW.PERTHPAINTING.COM
DISC. AVAILABLE PERTH PAINTING CONTRACTORS REG 6173

Pest Control

Mal's Pest & Weed Services
Free Quotes
• Servicing the Hills and surround for 30 years
• Specialising in termite treatments & inspections
Call Sean **0417 905 708**

Plastering

EASTERN HILLS PLASTERING
ABN 69 373 874 693
All Aspects of Plastering - Concrete Skim
Coating - Acrylic Texture Finish - Renovations
30 YEARS EXPERIENCE FREE QUOTES
TONY **0406 675 211**
easternhillsplastering@outlook.com

Looking for a tradie?

Now you can find a tradie in the paper AND on our website
ANYTIME GO TO:
www.echonepaper.com.au

Plumbing

The Tap Doctor
FOR ALL PLUMBING & GAS
• Taps • Burst Pipes
• Toilets • Leak Detection
• Hot Water Systems • Blocked Drains
Call Today **1300 655 827**
Our Service Will Amaze You
PL6703 www.thetapdoctor.com GF10208

Local Plumber
Same Day Service
Hot Water Expert
• Upfront Prices
• Pensioners Save
• Drains, Taps, Toilets
• Burst Pipes, Gas
Emergency Plumbing 24hrs
6118 6368
PL9956 *conditions apply

Hi I'm Local
In Your Area
Hot Water Expert
✓ Senior Discounts
✓ Upfront Pricing
✓ Fast Plumber
✓ Drains, Taps, Toilets
\$0 Call Out*
Plumbing Emergencies 24/7
6244 3226
*conditions apply PL9956

LOCAL PLUMBER
PL9956
Same Day Service
Blocked Drain, Taps, Toilets
Burst Pipes, Hot Water
*conditions apply
Same Day Emergencies 24hrs
9468 2581
NO CALL OUT* + SENIOR DISCOUNT
Your Best Local Plumber!

Reticulation

Reticulation
0433 366 655

Roofing

YOUR LOCAL ROOF SPECIALIST
PROFESSIONAL SERVICE & REPAIRS
• METAL ROOFING | NEW AND REPLACEMENT
• GUTTERS & DOWNPIPES | NEW AND REPLACEMENT
• ROOF COATING AND RESTORATIONS
• MAINTENANCE
• LEAKS AND ROOF REPORTS
CONTACT PETE FOR A FREE QUOTE
9274 7663
sales@prowestroofing.com.au
prowestroofing.com.au

Roofing

AR Specialist Roofing
Solutions for all your roofing needs including
• roof restoration • gutters • leaks
• gutter guard installation • downpipes • sheeting
• custom flashings • gutter cleaning • carpentry
house painting • roof cleaning • PATIO BUILDING
Call Andrew
0410 669 184
arspecialistroofing@gmail.com

ROOF TILE REPAIRS
For all your Roof Tile Repairs
Contact David for a free quote on
0413 240 203 or 9255 4003
Specialising in: Leak Repairs • Gutter Clean
• Tiling • Re-ridging • Re-pointing

AMC ROOFING

Specialising in
All Tiled Roofing
New Roofs
Maintenance & Repairs
Free Quotes - Aaron Carter
Mob: 0417 930 817

Tree Services

TLC Tree Services has merged with
Payne's Tree Services
FREE QUOTES AND ADVICE
• MULCHING • LAND CLEARING
• STUMP GRINDING
• TREE LOPPING
Call Clint on **0455 132 014**
paynestreeservices.com.au

HILLS TREE SOLUTIONS
For all your Tree Lopping and Stumpgrinding Needs
• Locally owned & operated • Call 24/7
• Fully Insured • Cheapest Prices Guaranteed
• Horizon Power Accredited • Servicing All Areas
CALL **9295 6511**
OR **0414 438 610**

Helping people manage trees for over 30 years

CPD TREES
ARBORISTS
Michael Byrne Dip. Arboriculture
0411 750 342
www.cpdtrees.com.au
arborist@cpdtrees.com.au

Window Cleaning

TATANIA'S
Window Cleaning
Homes, Shopfronts, Offices,
Tracks & Flyscreens
0467 282 127
tataniawindows@gmail.com

ECHO NEWS
Privately owned & proudly independent
Indemnity and Warranty
ECHO NEWSPAPER CONDITIONS OF ACCEPTANCE
When an individual or other legal entity ("the Customer") requests Echo Newspaper ("Echo") to place an advertisement in this Newspaper, they agree to be bound by the following terms and conditions:
1. Echo, at its sole discretion, may decline to publish any advertisement requested by a Customer. If Echo decides not to publish a particular advertisement, there is no obligation on Echo to disclose the reasons for its decision, and Echo will not be liable for any loss or damage occasioned to the Customer as a result of the decision.
2. Echo will not be liable for any loss or damage caused to a Customer as a result of delay or as a result of Echo failing to place a requested advertisement or publishing an advertisement containing an error or omission.
3. Echo may, at its sole discretion, decide to refund a Customer a portion of the cost of the advertisement if it forms the view that the error was not attributable to the Customer and the Customer notifies Echo of the error or omission before 5.00pm on the day the advertisement first appears in the Newspaper.
4. Complaints concerning the accuracy of any invoice must be notified to Echo within 30 days from the end of the month in which the advertisement was published, after which time the Customer forfeits any rights it may have had to challenge the invoices.
5. The Customer warrants that publication of the requested advertisement/s will not contravene any laws, whether statutory, equitable or otherwise, and agrees to wholly indemnify Echo (and its employees and agents) against all expenses, loss and damage arising directly or indirectly from the publication of the advertisement/s.

ECHO Classifieds

Custom Video & DVD Solutions

VHS TAPES to DVD/USB
\$45 per tape. 0478 935 855.



Electrician

LITL Electrical
All types of electrical work
& air conditioning.
Jeff Overton
0483 858 603.
EC14844



Gardening

HILLTOP Mowing & Yard Maintenance Glen Forrest & Surrounding Areas PH: 0400 365 887.

Bilby's Garden Services
Weed, Prune, Mow & Slash. Free Quotes 0416 855 335.

Ian Mac's whipper snipping, chain sawing and weeding. Small tree lopping jobs. 0426 211 137.

Gutter Cleaning

Gutter cleaning & solar panel cleaning. Jason 0421 455 546.

Handyman

WILLIS BUILDING & MAINTENANCE SERVICE. Specialising in all house maintenance, pergolas, decking, verandas, painting and carpentry. 0487 093 355.

Lawn Mowing

Tony's Lawnmowing, Handyman & Firewood. Cheap rates. Midland & Surrounding Areas. 0431 831 948.



Painting

FOR A PROFESSIONAL JOB for a reasonable price, phone Andrew 0413 158 763.

Painting, Gardening, Pressure Cleaning. 0477 660 703. Local.

AAA PAINTING INTERIOR/EXTERIOR
For very competitive prices and old fashioned service ph Nathan on 0409 247 293. (Reg. No. 6605)



Plastering

PLASTERER for water damage repairs to walls and cracks and handyman work. Txt Sam 0478.194.662.

Plumbing

MASTERS PLUMBINGAS All Plumbing & Gas work, Blockages, Hot water units, Leaks, Renovations, Burst pipes. 24/7 Emergency Service. NO CALL OUT FEE David: 0416 644 191. PL-9554 GF-011284

Regrouting

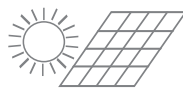
Bathroom Regrouting. Call Andrew 0413 158 763.

Rental Wanted

Mundaring Hills. \$450 to \$500 wk. Call 0429 750 330.

Solar Services

Solar Panel Cleaning with Anti Mould & Solar Wax Treatment. 0421 455 546.



Window Cleaning

Tatania's Window Cleaning. Tracks. Frames & Fly screens. 0467 282 127.

Yoga

YOGA
Monday
6pm-7.15pm
Gooseberry Hill Hall,
42 Ledger Road
Ph Jeanene
0406 773 650

Public Notice

AMENDMENT NO.20 TO LOCAL PLANNING SCHEME NO.4 – LOT 99 BETTY STREET AND LOT 9100 THORNWICK CRESCENT, CHIDLOW

Notice is hereby given for public information that the Shire of Mundaring, at its Ordinary Council Meeting held on the 10 December 2024, resolved to adopt and grant consent to advertise Amendment No.20 to Local Planning Scheme No.4 for public comment.

The purpose of the Amendment is to recode portion of Lot 9100 Thornwick Crescent, Chidlow from R2.5 to R5. Also, by rezoning Lot 99 Betty Street, Chidlow from Residential to Local Planning Scheme Reserve 'Recreation'.

Limited printed copies of the Amendment document are also available at the following locations:

- Online, via Public Consultation section on the Shire's website: www.mundaring.wa.gov.au
- Shire of Mundaring Administration Centre (7000 Great Eastern Highway, Mundaring)
- Albert Facey Memorial Library (1 Nichol Street, Mundaring)
- Katharine Susannah Prichard Library (119/135 Scott Street, Helena Valley)
- The Hub of the Hills (8 Craig Street, Mundaring)

Comments in relation to this Amendment will be accepted by the Shire of Mundaring, in writing until close of business on **Friday 2 May 2025**.

Any further information can be obtained by contacting the Shire's Planning Services on 9290 6740 or via shire@mundaring.wa.gov.au

Jason Whiteaker
CHIEF EXECUTIVE OFFICER



DRAFT HERITAGE LIST – INVITE TO COMMENT

The Shire is inviting comment on its draft (revised) Heritage List. The main purpose of which is to consider elevating places into the Heritage List which have a significance category of 1 or 2 in the Local Heritage Survey. This gives the place recognition and protection under the local planning scheme.

The draft Heritage List is available to view at the following locations:

- Online, via the Public Consultation section on the Shire's website: www.mundaring.wa.gov.au
- The Shire's Administration Building (7000 Great Eastern Highway, Mundaring)
- Albert Facey Memorial Library (1 Nichol Street, Mundaring)
- Katharine Susannah Prichard Library (119/135 Scott Street, Helena Valley)
- The Hub of the Hills (8 Craig Street, Mundaring)

Submissions on the draft Heritage List can be made until **4.00pm on Friday 11 April 2025** via:

Online: Using the submission form on the Shire's Engage Mundaring website (<https://engage.mundaring.wa.gov.au/>)

Post: Shire of Mundaring, 7000 Great Eastern Highway MUNDARING WA 6073

Email: shire@mundaring.wa.gov.au

Should you have any queries please contact the Shire's Planning Services on 9290 6740 or via shire@mundaring.wa.gov.au.

Jason Whiteaker
CHIEF EXECUTIVE OFFICER



ECHO Notice Board

A free service for non-profit organisations

9374 6666

editorial@echo-news.com

Upcoming events

- **The Darling Scarp Artisans** are holding an exhibition and sale of hand crafted gift (shop early for Mother's Day) Saturday, March 29 and Sunday, March 30 at the Agricultural Hall Canning Road, Kalamunda from 10am to 4pm both days. Coffee, tea and cakes available.
- **The St Stephens Anglican Church** will be running their market day on Friday, March 28 from 8.30am until 11.30am. There will be bargains galore at 9 Salix Way, Forrestfield. All welcome.
- **The Rosehill Ladies Golf Club** meets each Tuesday at 8am at Hillview Public Golf Club, Kalamunda Road, Maida Vale. The season runs from March to November. Call Roz on 0419 915 623 or Julia on 0419 954 106.
- **Midland Men's Shed Social Tuesday** is every Tuesday from 9.30am to 11.30am in the Baptist Church Hall, Bellevue. Call Kevin on 0417 961 971. For workshop inquiries call 0411 833 055.
- **Kalamunda Youth Swing Band** gives young musicians the opportunity to rehearse and play in a band. Rehearsals are Monday afternoon during school term. For more information call the musical director on 0432 973 395.
- **Midland Ascension Craft Group** meets in the Parish Hall, 17 Spring Park Road, Midland every Tuesday of school term from 1pm to 3pm. All most welcome to join for a chat, cuppa, any craft and sometimes a guest speaker. Call 0433 265 683.

Noticeboard is for non-profits and community groups advertising free/low cost events/programs. Entries must be emailed to editorial@echo-news.com two weeks before the event.



Woofers of the week

Trixie is a kelpie cross, who is about one-year-old. She is a very sweet dog and is eager to learn. She is vaccinated and microchipped but is not sterilised as yet. Costs apply. Contact Bakers Hill Dog Sanctuary on 9574 1438.



ECHO NEWS
Privately owned & proudly independent

Discover our
digital edition online



Nine-year-old Amiel Safaniev and seven-year-old Elrad Safaniev have been training out of Malaga and Ellenbrook to achieve big dreams in combat sports.

Olympic grappling dream for Swan products

GUANHAO CHENG

AT just nine and seven-years-old, Swan products Amiel and Elrad Safaniev have already won state and national championships in multiple grappling disciplines and are aiming for future Olympic gold.

Despite their young age, the brothers have already racked up an incredible number of victories.

Amiel has 58 wins, while Elrad has 37.

Amiel is a two-time national freestyle wrestling champion, as well as a runner-up in beach wrestling and Brazilian jiu jitsu (BJJ), while younger brother Elrad claimed a national freestyle wrestling title and will travel to Sydney to compete for a second in June.

The brothers hone their skills at Perth Martial Arts Centre in Malaga and Ellenbrook, where they learn under two-time BJJ world champion William Diaz and Mestre Goioere Muzenza.

These elite-level coaches have helped the boys refine their technique, particularly in gi and no-gi BJJ, ensuring they develop a well-rounded skill set.

Their father Marc Safaniev said the boys had big aspirations in the world of combat sports.

"The boys' long-term goals are to become the first ever Olympic wrestling champions for Australia, get their black belts in BJJ and win a world title in that and then go on to win a world title in the UFC," he said.

"I was a national champion wrestler,

fought in MMA, and competed in BJJ, grappling and other combat sports.

"I was born in Dagestan, Russia, the mecca of combat sports, while their mother is from Kazakhstan, a country renowned for its boxing and wrestling traditions.

"I founded Human Movement Hub fight club in Mindarie, specifically for my sons and their sparring partners.

"Their older cousin in Russia was a national champion in sports and combat sambo, reinforcing a strong family legacy in the sport.

"The boys have been training since birth, with their main gym located right in their home."

At the Wrestling Federation of Singapore's national open, both boys showcased their dominance.

Amiel secured double gold in sports sambo and freestyle wrestling, winning seven matches in a single day.

Elrad remained undefeated, winning four consecutive matches in freestyle wrestling, including a hard-fought 9-12 final against a strong Malaysian opponent.

Mr Safaniev said the atmosphere at the Singapore Open was intense, with tough competition from across Asia but the boys thrived under pressure.

"They always enter competitions with confidence, but these results were still a proud and exciting moment," he said.

This year, the brothers plan to compete in the ADCC submission fighting event in Phuket, Thailand on April 16, another BJJ tournament in Singapore, and the world BJJ championships in Abu Dhabi.



This year the Bullsbrook club is calling for new players to help fill its ranks.

Hills Football season will start on April 6

BRIAN PALLISTER

THE 2025 Hills Football Association (HFA) season is due to start on Sunday, April 6.

HFA is an Australian Rules competition consisting of clubs from the Perth Hills – Bullsbrook, Chidlow, Gidgegannup, Mt Helena, Mundaring, Swan View and Pickering Brook.

This year the Bullsbrook club is calling for new players to help fill its ranks.

The association is approaching its 80th year after starting in 1946, the year following World War II.

The inaugural clubs were formed from towns within the hills area along the Kalgoorlie railway line, giving those communities a connection after some very difficult years.

In round one Swan View takes on Pickering Brook, Chidlow plays Gidgegannup and Mt Helena plays Mundaring while Bullsbrook has the bye.

HFA supports the Belt Up round, which will this year be held in round six on May 18.

Think Mental Health is held on June 22 – a dedicated round for suicide awareness across the whole country football league.

Midland Guildford A grade make final

JOSHUA MCKENZIE

THIS weekend the Midland Guildford female A grade play in a grand final at the WACA ground.

The side were defeated in their final match before the 50-over grand final.

Playing Subiaco Floreat, Ines McKeon top scored with 69 from 109 in the innings of 168 all out.

They would lose by four wickets but will face the same opposition in the grand final this weekend.

While the female sides concluded their regular season last weekend a number of male sides played their first round of finals fixtures.

After finishing fifth on the ladder, the male 2nd grade faced University in their elimination final.

The opposition won the toss and asked the side to bat first.

A challenging start saw the team being 1-62 after 30 overs at the lunch break, before moving to 4-142 during the final session of day one, with Hayden Kain providing a pivotal innings of 51 runs from 147 balls.

A collapse of four wickets for just six runs found the side struggling at 8-148 before a valuable lower order contribution from Kyle Christie (37 not out from 62) helped the side post 9-195 from 90 overs.

Defending that total on day two proved difficult but there was some momentum gained when a wicket in the final over before lunch saw the opposition fall to 4-69 after 31.1 overs.

A 95-run fifth wicket partnership would prove to be too much to overcome as they would ultimately find themselves losing by five wickets.

The male 3rd grade played against Wanneroo in their elimination final after finishing fifth on the ladder during the regular season.

A strong start in the first innings after losing the toss and bowling first saw the side reduce their opponents to 6-123 at one stage.

Unfortunately, they were unable to limit the lower order batters who pushed the score to 295 all out.

In the run chase, they struggled to regain control in the match as they were dismissed for 115 all out in a 180-run defeat.

With first place on the ladder secured, the male 4th grade faced Mount Lawley at home in their elimination final.

The side won the toss and bowled first, dismissing their opponents for 89 all out in an effort led by captain Matthew Hampson who took 4-23 from 17 overs.

In the second innings, Lucas Walker top scored with 33 from 128, but it wasn't enough as they were bowled out for 87 despite the efforts of the lower order batters.

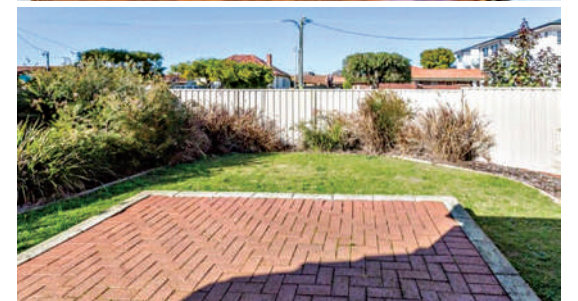
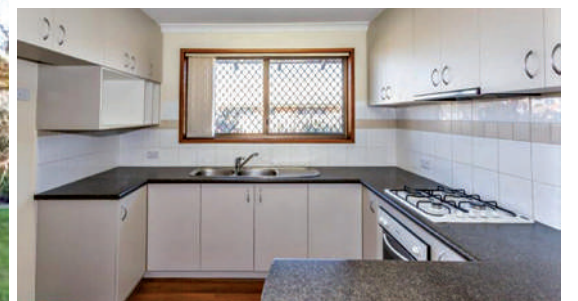
In the last female B grade match of the season, the side was unable to chase the target of 187 that was set by Rockingham Mandurah.

They would be bowled out for 109 in the 77 run defeat and will finish the season in 4th position on the ladder.



Midland Guildford Cricket Club female A grade captain Sheldyn Cooper.

Midland home with space to grow or invest



MIDLAND's 30A Charles Street is conveniently positioned and offers a unique opportunity for investors and homeowners.

Walk up the driveway and past the trees and shrubbery that greet visitors at the front of the home and discover a realm of development potential.

This two-bedroom, one-bathroom house is part of a duplex on a generous 1012sqm block.

Regardless of how you wish to purpose this block, either as an income-generating investment, a home to live in, or a property to develop, this address offers flexibility and possibility.

The house has a stone bench-top kitchen leading to the open dining area, complemented by a comfortable living space

with timber floors and year-round comfort from split-system air conditioning.

Additional amenities include a back patio area with some lawn and shrubbery for relaxing or entertaining guests in the open air.

The property is currently tenanted so there is immediate rental income, with flexibility for lease renewal if prospective buyers are looking to make this house an investment property.

The affordable annual water rates of approximately \$791.69 boost this property's appeal.

Apart from the house itself, the position makes living here easy and convenient with Midland's main shopping centre just minutes away.

Families will appreciate the proximity

to nearby schools, TAFE colleges, and universities, while commuters will be able to enjoy the Midland train station and major transport links connecting to Perth and beyond.

The Swan Valley wine region is also a short drive, offering world-class food and recreational experiences.

Whether you're looking to expand your property portfolio or find a home with potential for growth, this Midland property is worth considering.

Address:

30A Charles Street, Midland

Price: From \$479,000

Agency: Real Estate Plus

For more information contact Edward Harfouche on 0409 004 424

REAL ESTATE *Plus*

.com.au



CHIDLOW
9572 4113

MIDLAND
9274 5000

COMMERCIAL & INDUSTRIAL
6146 3333

SWAN VIEW \$630,000-\$675,000



BLANK CANVAS
19 Carlton Place

- Four bedrooms
- One bathroom
- Lounge/Dining/Kitchen/Meals
- Air-conditioned
- Patio Area/ Gazebo

Edward
0409 004 424
Midland
9274 5000

MIDLAND FROM \$499,000



CONVENIENT & CHARMING
81 Morrison Road

- Two bedrooms
- One bathroom
- Open-plan kitchen and dining
- Rear access via laneway
- Large backyard with patio and sheds

Edward
0409 004 424
Midland
9274 5000

MOKINE FROM \$849,000



HOME OPEN SUNDAY
1.15 PM -2.00 PM
169 Old Coach Road

- 50 Acs Pasture, 4x2 Homestead
- 2 Living areas, 2 x studies, Dining
- Country kitchen, huge pantry
- 20x60sqm arena, 4 Stables, l/u shed
- 12x6mt open gp shed, 3 carport

Jo
0409 847 102
Chidlow
9572 4113

MUNDARING OFFERS OVER \$949,000



OPEN SUNDAY 12.45 PM-1.30 PM
850 Walker Street

- Brick/Hardi Plank & Tile Home
- 2 Sep Living Spaces, scheme water
- Entertaining Area, lge shed, Bore
- Various Fruit Trees, Single Garage
- Winter Creek, Bore, 3468sqm Block

Alison
0428 914 085
Chidlow
9572 4113

MIDLAND PRICE TO BE NEGOTIATED



HIGHWAY SHOWROOM - APPROX 550SQM
338 Great Eastern Highway

- 490 sqm space
- Suit Showroom
- Highway facing
- Additional shed space 32 sqm
- Approx 28 car bays

Mike
0403 621 899
Midland
6146 3333

REAL ESTATE *Plus*

Plus LOANS
ACL: 383 631

Plus Your Settlements

Greg's Discount Drug Store Midland Superstore SALE ON NOW!

12 March – 26 March 2025

SUPER SAVERS
Ends 7 April 2025

30% OFF RRP*

\$8⁹⁹
Save \$4.08 OFF RRP^

Ural Effervescent Powder Lemon Flavour
28 Sachets



Always read the label and follow the directions for use.

SUPER SAVERS
Ends 7 April 2025

30% OFF RRP*

\$3⁴⁹
Save \$1.51 OFF RRP^

Colgate Total Original Toothpaste 115g



Always read the label and follow the directions for use. Incorrect use could be harmful.

SUPER SAVERS
Ends 7 April 2025

25% OFF RRP*

\$38⁸⁹
Save \$13.11 OFF RRP^

Zyrtec Hayfever & Allergy Relief Value Pack
80 Mini Tablets



Always read the label and follow the directions for use. Incorrect use could be harmful.

SUPER SAVERS
Ends 7 April 2025

25% OFF RRP*

\$11³⁹
Save \$4.10 OFF RRP^

Systane Ultra Lubricant Eye Drops
10mL



Always read the label and follow the directions for use.

SUPER SAVERS
Ends 7 April 2025

20% OFF RRP*

\$22⁶⁹ ea
Save \$6.30 OFF RRP^

Nurofen Zavance
96 Caplets or 96 Tablets



Always read the label and follow the directions for use. Incorrect use could be harmful.

SUPER SAVERS
Ends 7 April 2025

20% OFF RRP*

\$22³⁹
Save \$5.60 OFF RRP^

QV Gentle Wash
1kg



Free QV Cream 50g with any QV 1L/1Kg purchase~

~Participating stores only, while stocks last.

^Savings calculated on recommended retail price notified by the supplier. Pricing in-store prior to the promotion may differ and actual savings may vary. Offers available from 12 March – 26 March, 2025 (unless specified) at Greg's Discount Drug Store Midland Superstore only. Super Savers available from 12 March – 7 April, 2025. While stocks last. Products and offers not available at all stores. Failure by supplier to deliver or other unintentional causes may result in some items in this flyer being unavailable. Unless otherwise stated accessories shown are not included in the price. We reserve the right to correct printing errors.



GREG'S DISCOUNT DRUG STORE MIDLAND
243 GREAT EASTERN HWY
MIDLAND WA 6056

PH: 08 9274 1455 • E: gregs@gregsmidland.com.au

OPEN 7 DAYS: 7:30AM – 9PM



Discount Drug Stores
More than just low prices