

# ECHO NEWS

SINCE 1985

Friday, April 24, 2026

**Greg's**  
Discount Drug Stores  
More than just low prices  
**Midland** See back page  
**OPEN ALL LONG WEEKEND**  
**OPEN 7 DAYS: 8.00AM - 8.00PM**  
T: (08) 9274 1455  
243 Great Eastern Hwy, MIDLAND   

Local Business Supporting Local People

VOL.43 NO.1959

**Gidgegannup community legend**  
P4



**Labor's latest prison plan comes under fire**  
P8



**Midland ANZAC service revival**  
P8




Picture: Guanhao Cheng

## Rally against data centre

The opposition to a proposed AI data centre in Hazelmere has continued to grow with residents rallying to the clanging of pots, pans and drums. **P3**



**The Shed Company**  
RESIDENTIAL • RURAL • COMMERCIAL



(08) 6394 5020

UNIT 2, 18 WANDEARA CRESCENT, MUNDARING

WWW.THESHEDCOMPANY.COM.AU

Supported by City of Swan

**ARTISAN MARKET**  
Ballajura Community College Carpark  
**SUNDAY 26<sup>TH</sup> APRIL**  
**LAST SUNDAY OF THE MONTH**  
**@ THE PELICAN PARADE SCHOOL ENTRANCE**  
**11AM - 3PM**

**SATURDAY 25<sup>TH</sup> APRIL ANZAC DAY**  
Dawn Ceremony & Gunfire Breakfast  
Sponsored by City of Swan, Ballajura Community College & CCY Inc.

Funds from these projects and programmes are utilised to support programmes within our community. If you would like to support or sponsor one of these FREE Community Activities please contact our CEO S Mesiti - smesiticcyinc@gmail.com

**Kalamunda Funeral Company**  
JUST give us a call. No Fuss, No Frills.



**Just Cremations**

17 Canning Rd, Kalamunda 1800 65 35 95

**PEK OP SHOP**

★ ONE DAY ONLY! ★

**MONDAY PUBLIC HOLIDAY SALE!**

**\$5 ALL LADIES DRESSES**

EXCEPT PREMIUM RACK

**MONDAY 27 APRIL 2026**  
★ MONDAY PUBLIC HOLIDAY ★

**PEK CARE INTERNATIONAL**

**MIDLAND STORE ONLY**  
Unit 4 / 245 Great Eastern Highway  
Midland WA 6056

Thank you for supporting your local op shop!

SHOP LOCAL. SUPPORT COMMUNITY.  
Every purchase makes a difference!

We do not send any of our work overseas to be completed

**Do you have Outstanding Tax Returns? AVOID PENALTIES**

**COME AND MEET OUR FRIENDLY EXPERIENCED STAFF**

BAS' · Personal Tax Returns  
All Businesses · Partnerships  
Trusts · Companies · Sole Traders  
Super Funds

Your tax can be arranged via phone or email.  
**We are here to help!**

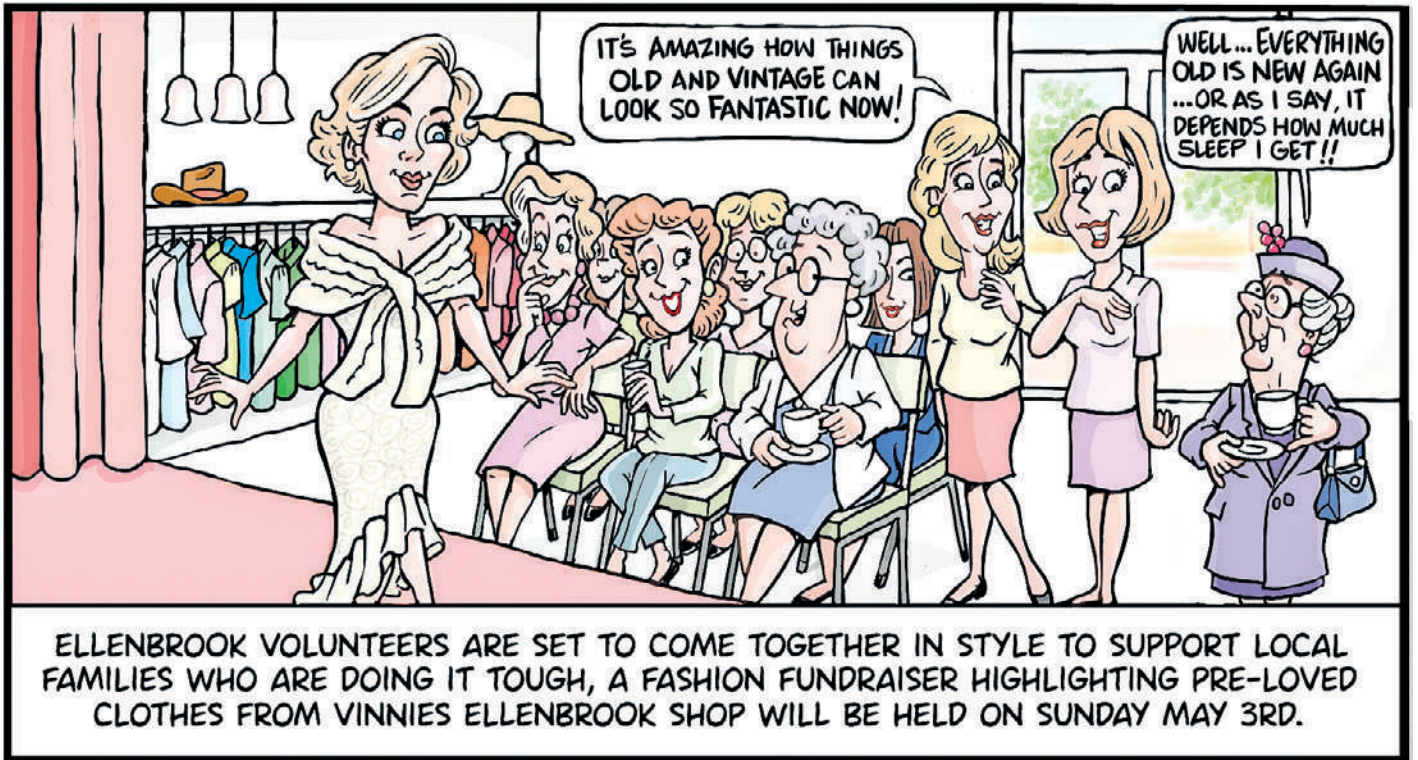
Contactless Appointments Available

Tuesday nights and Saturday mornings available by appointment

**9274 7511**  
**RUSSELL MULLER PTY LTD**

PUBLIC ACCOUNTANT  
Reg. Tax Agent.  
Principal: Pat Russell  
Chartered Tax Agent & NTAA Member

Unit 3/51 Farrall Road (cnr Rothschild Place)  
MIDVALE  
Mobile: 0418 904 252  
email: admin@prussell.com.au



ELLENBROOK VOLUNTEERS ARE SET TO COME TOGETHER IN STYLE TO SUPPORT LOCAL FAMILIES WHO ARE DOING IT TOUGH, A FASHION FUNDRAISER HIGHLIGHTING PRE-LOVED CLOTHES FROM VINNIES ELLENBROOK SHOP WILL BE HELD ON SUNDAY MAY 3RD.

**ECHO YOUR THOUGHTS**

Have your say:  
editorial@echo-news.com

**Macri's Fruit Shed supported**

Dear Echo News,  
It is time governments and councils accepted the fact that they are there to serve the people - and what the people want - not some personal motive.

Places like Macri's Fruit Shed have been around for so long they are considered fixtures with the locals and travelling tourists.

They are common on country roads throughout Australia, and are a pleasure to just call in to buy a little fruit etc, and quietly relax for a bit while tiredness dissipates.

Macri's is not some new roadside store, but one that has been around for about 30 years.

If it was not legal, then why were they not told that many years ago?

More likely because some idiotic bureaucrats, with inflated egos, want to stamp their current ideas on the public.

Are they pandering to the superstores?

What are they going to do next? Close down all the fruit stores along West Swan Road and the Great Northern Highway?

At least Stephen Cain seems to be showing a bit of sense!

These small roadside stores are a relaxing place to call into where we can buy fresh fruit and vegetables...even, perhaps, an ice cream.

Just because they are selling some other goods that people want, does not make it any less appealing, and beneficial, to the public.

Just the opposite. It also boosts their income, helping to keep the orchards going when times are tough... and they often are with the ever-changing climate.

We don't want them closed down; we want

them, and more like them, to open, giving us more of the pleasures I grew up with.

They are not causing any problems for roads or major businesses; just giving pleasure to locals and travellers.

S Oliver  
Ellenbrook

**Jorgensen Park use opposed**

Dear Echo News,  
The Special Electors Meeting on Jorgensen Park sent a message that could not have been clearer.

The chamber was overflowing. The community turned out in remarkable numbers, informed, respectful and united.

Every motion opposing the proposed commercial lease passed unanimously or close to it.

That is not a divided community. That is a clear mandate.

Yet the deeper concern raised on the night was this: has the City of Kalamunda lost its way?

This is not just about one park. It is about a pattern of decisions that appear to prioritise commercial interests over community values, transparency and environmental protection.

Jorgensen Park is Crown land - a shared public asset - yet it is being considered for exclusive commercial use without a site-specific ecological assessment, despite known environmental values.

And importantly, council is not bound to proceed.

Ministerial approval, if granted, allows a lease - it does not require one.

The decision remains with council.

The community has spoken clearly, lawfully

and in good faith.

Council now needs to do the same.

C Dornan  
Wattle Grove

**DAP is failing our democracy**

Dear Echo News,  
One of the cornerstones of democracy is the accountability of policy makers through standing before the electorate.

The Development Assessment Panel (DAP), as mentioned last week by C Hughes of Woodbridge, is a perfect example of a government agency that fails miserably to meet this basic democratic standard.

DAP panels consist of five members, two of which are councillors of the LGA where the development proposal resides.

These representatives are not bound by any actions or recommendations made by the local council; they are free to vote the minority position even if the council as a whole has voted in the opposite.

Additionally, these representatives do not have to come from the ward where the project is located.

If these appointees do not stand in the ward where the development takes place, then effectively those electors have no means to show elected officials the door when they feel that they are not representing them (kick the bums out in direct parlance).

Hence, DAP officials are unaccountable by democratic processes.

Governments or agencies that are unaccountable are rife for undoing outside influence and corruption and effectively reduce the electorate to the status of serfs.

The WA development process needs to open

**Thought for the day**

"The power of man's virtue should not be measured by his special efforts, but by his ordinary doings."

- Blaise Pascal

up to a more democratic one where consideration and due diligence is given to the community.

Those who have invested their life's savings and efforts in a community should help to decide its direction, rather than the next billionaire with an out-of-step proposal that irreversibly changes that community for the worse, forever!

Dr R Ilchik  
South Guildford

**Park event against core values**

Dear Echo News,  
The City of Kalamunda has received a proposal for a commercial night time event at Jorgensen Park to run for up to five months, from April through August.

Although a two-week public submission period was held, the city was unable to provide details about the nature or scale of the event due to a non-disclosure agreement.

The Nature Reserves Preservation Group (NRPG) considers this lack of transparency is inconsistent with the city's stated core values.

Based on available information on previous events by proponent Kzemos, it may resemble previous Harry Potter: A Forbidden Forest Experience events, which involve extensive coloured flashing lighting, amplified sound, smoke effects, diesel generators and large visitor numbers.

The proposed timing coincides with the breeding season of many native birds and

mammals, including protected species such as black cockatoos and phascogales.

A further impact is the greatly increased risk for the spread of dieback.

NRPG supports environmentally sensitive community events; however, the use of a high biodiversity area such as Jorgensen Park for an intensive, commercial night time attraction is inappropriate and poses unacceptable risks to wildlife and ecological values.

S Gates  
Secretary NRPG

The Echo reserves the right to edit letters for length, legal reasons or clarity. The opinions expressed do not necessarily reflect those of the Echo. All letters must contain the author's full name, address and phone number for verification purposes.

**ECHO News**

ADDRESS:  
Unit 4/9 The Avenue  
Midland WA 6056

Phone: **9374 6666**

GENERAL MANAGER / EDITOR

Peter W Lewis 9374 6605  
peter.lewis@echo-news.com

ADVERTISING  
sales@echo-news.com  
Karon McCracken 9374 6610

EDITORIAL  
editorial@echo-news.com  
Guanhao Cheng 9374 6602  
Mike Peeters 9374 6601  
Brayden Mould 9374 6603  
Daniel Holmes 9374 6603

PRODUCTION  
production@echo-news.com  
Liz Rowlands 9374 6613  
Maja Pietranik 9374 6613  
Brody Pettit 9374 6613

ACCOUNTS  
accounts@echo-news.com  
Caprice Harries 9374 6604

OFFICE HOURS:  
Monday-Wednesday:  
9.00am - 5pm  
Thursday:  
9.00am - 4pm  
Closed Friday  
Closed: Weekends & Public Holidays

# Swan rally opposes Hazelmere data centre

MIKE PEETERS

A LARGE crowd vented its anger during a rally held outside the City of Swan administration building in Midland on Wednesday this week.

Organised by the Helena Valley River Community for Responsible Development, the demonstration against the proposed Hazelmere data centre continued on to the nearby Midland Town Hall.

The crowd marched down Midland's streets to chants of "Hey, ho, no data centre," as they headed towards the town hall.

Once there, Guildford Association member Christina Hughes and Hazelmere resident and engineer Randal Swick, whose house neighboured the proposed centre, spoke to the rally about the details of the proposal.

There has been a huge community backlash to the proposed \$1.1 billion GreenSquare DC Hazelmere data centre project as reported in *Proposed new data centre comes under fire*, (*Echo News*, March 12).

On March 30 mining watchdog Mineral Policy Institute (MPI) and Murdoch University submitted an objection to the proposed three-storey, 23.5m development due to concerns about its impact on already limited resources.

Helena River Waldorf School parents and friends association vice chair Anita Rowell said if the data centre went ahead it would be right on top of the school with the proponents only allowing a small gap between.

"This is something that should never be allowed," she said.

Former urban planner and data centre opponent Lindsay Baxter of Midland said the original period given by the City of Swan for data centre public submissions was from March 5 to March 20, 2026.

But Ms Baxter said a planning report was unavailable until well into the public submission period, which had effectively put community on the backfoot for providing informed input.

"On March 13, I had a conversation with Cr Sarah Howlett and expressed concern that there was no planning report accompanying all the documents that were listed on the Swan Engage platform," she said.

"As a retired urban/town planner, that was the first document I looked for.

"Cr Howlett apparently then spoke to City of Swan (planning staff) and the planning report prepared by consultants Urbis was then loaded onto the Swan Engage platform on or about March 17 or 18, 2026.

"The City of Swan then extended the submission period to



Community groups and residents rallied against the proposed data centre. Picture: Guanhao Cheng

March 30."

The centre sits immediately adjacent to Trillion Trees Australia, a community nursery that has planted over 15 million native trees from Hazelmere since 1979 and the Helena River Waldorf School.

A GreenSquareDC spokesperson said they recognised the strong interest in this project given its proximity to existing businesses, residents and the local school.

"These concerns are taken seriously, and we are committed to engaging constructively throughout the planning process," they said.

"GreenSquareDC has engaged with the City of Swan and key stakeholders throughout the development of the data centre proposal.

"The project is currently subject to the formal planning assessment process which allows all submissions to be considered in a structured and transparent way."

They said they would continue to work with the City of Swan and relevant stakeholders as the assessment process progressed.

Member for Hasluck Tania Lawrence said community members had raised concerns about the proposed data centre devel-

opment and she had written to the relevant state ministers.

"I am seeking clarification on the extent to which the proponent meets the expectations set out for data centres and AI infrastructure under the national AI plan," Ms Lawrence said.

"These expectations make clear that data centre developments must put the needs of the Australian people first, ensuring direct benefit to the community through jobs, skills and innovation investment while strongly supporting Australia's clean energy transition and safeguarding water security long-term.

"I have also sought a meeting with the proponent to better understand their plans to underwrite new clean energy, ensure the facility is energy-efficient, contribute fairly to network costs and support grid stability so costs are not passed on to households or businesses."

When questioned by *Echo News*, City of Swan said they were unable to comment on specific issues until their responsible authority report on the matter was complete.

To vote on the data centre go to [www.change.org/p/reject-the-hazelmere-data-centre-development](http://www.change.org/p/reject-the-hazelmere-data-centre-development)

The MPI article is at <https://mineralpolicyinstitute.substack.com/p/the-cloud-and-the-river-why-a-mining>

## Mundaring canopy program ceased for PSHB control

MUNDARING'S Urban Canopy Grant Program is no longer active, being overridden by the state's approach focused on addressing tree canopy loss caused by polyphagous shot-hole borer (PSHB).

The topic was brought back into focus through a resident's question in the March 10 council meeting with council taking then question on notice and publicising the response in April.

The current approach for maintaining healthy canopies in the shire is led by the Department of Primary Industries and Regional Development (DPIRD) and the Department of Water and Environmental Regulation (DWER).

This includes the WA Tree Recovery Program which provides residents with a rebate of up to \$150 for replacement trees and associated planting items where trees have been removed under DPIRD authority.

*Mundaring urban tree canopy funding* (*Echo News*, January 24, 2025) reported the shire secured \$82,953 through the urban greening grant program for enhancing tree canopy and vegetative cover in Greenmount and Swan View.

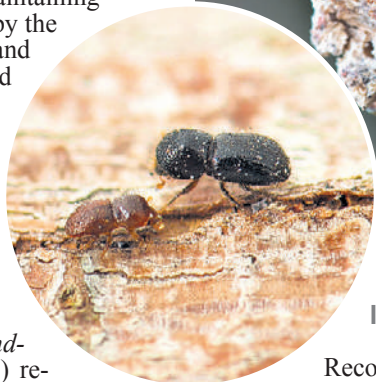
Under this grant more than 200 trees were to be planted where urban canopy was lacking.

But by mid 2025, *PSHB change a turning point says Mundaring president* (*Echo News*, June 27) reported the coordinated response to the polyphagous shot hole borer (PSHB) which had been threatening tree health in Mundaring, had officially moved from an eradication phase to long-term management.

At the time, Shire of Mundaring President Paige McNeil said it marked a critical turning point although the shire had not been advised of any confirmed PSHB tree infestations within its local government area.

Now, the PSHB still remained categorised as an active pest by DPIRD with Mundaring being sectioned off as part of its containment zone.

The Department of Water and Environmental Regulation is managing the delivery of the WA Tree



Polyphagous shot hole borers weren't able to be eradicated last year leading to the loss of many trees.

Recovery Program and offering rebates for trees removed from private properties under Department of Primary Industries and Regional Development authority due to shot-hole borer.

Residents who purchased a replacement tree after the launch of the program on July 28, 2025, are not eligible for a rebate under the Tree Recovery Program.

Although, residents who had trees removed by DPIRD have an eligibility window spanning back to November 18, 2021 as this was the date that Department of Primary Industries and Regional Development removed the first tree impacted by PSHB.

In this case, a claim may be made for each tree that was removed by DPIRD during the management of PSHB.

Tree planting establishment items were also able to be included in the \$150 claim including soil, soil improver, fertiliser, mulch, soil wetting agent, tree support stakes and guards and additional eligible trees. **Cont. p18.**

**bloom**  
Hearing Specialists

**NO ONE ELSE HEARS THE WAY YOU DO**

Book Your Free Hearing Check Today

BLOOM HEARING SPECIALISTS

**1800 554 968**

We Listen to The Way You Hear



Eric Thomas alongside his daughter, Hannah, who also volunteers as a firefighter.

# Gidgegannup volunteer recognised as community legend

BRAYDEN MOULD

**GIDGEGANNUP** volunteer firefighter Eric Thomas has been named a local community legend by Bunnings for his tireless eight-year tenure as lieutenant, a role he says began with a childhood dream but evolved into a community necessity.

The 54-year-old was nominated by a team member at the Midland Bunnings store for his bravery and commitment to the Gidgegannup region working tirelessly to protect the community from fires.

He says his dedication to the brigade is driven by a deep sense of responsibility to protect his home and the Gidgegannup environment, particularly in a region where help is not always immediately available.

"I realised early on that, out here, we have to be reliant on ourselves and our neighbours, as the nearest career fire station is Midland, and that's a 45-minute drive from my home," Mr Thomas said.

"So out of a sense of community and necessity I decided to join my local fire brigade, to help protect my home

and my community."

Mr Thomas said that being part of the brigade offered more than just technical training but also fostered lifelong friendships and a deep understanding of fire behaviour.

"Being part of the brigade has been a wonderful experience, I've been able to make new friends and learn new skills," Mr Thomas said.

"It's helped me better understand how fires behave, so that I can make better decisions if my family and home are every threatened."

Mr Thomas maintains this commitment to the community despite the complexities of his professional life as a FIFO worker and his personal roles as both a husband and father.

"I am a strong believer that, if you can sign up to the brigade, you do need to make the commitment to turn out whenever you can," he said.

"My wife is very understanding to the fact that during the high season, I may need to turnout when paged."

This dedication was on full display during the Wooroloo bushfire, where he worked on the frontlines alongside his

daughter Hannah who also volunteers, to defend local properties.

While the high-stakes nature of firefighting is seasonal, Mr Thomas said that the Gidgegannup brigade works year-round on training and fundraising for specialised equipment.

"The Gidgegannup community is all-welcoming, strong, resilient, and a great community to be part of," he said.

"When disaster strikes, we really do pull together and help out wherever possible."

Mr Thomas is now a finalist for the national Community Wellbeing Legend award, where winners will be announced in late June.

A national win would secure a \$10,000 donation to a Gidgegannup community group or charity of his choice.

Mr Thomas said his primary motivation remains his love for the local area.

"My desire to actively help keep my family, home, and community safe from fires is what keeps me going," he said.

# New Midland women's refuge opens

**THE** state government has committed \$3.7 million over three and a half years towards a new refuge for women and children escaping family and domestic violence in the Midland area.

Announced during last year's 16 Days in WA campaign, the Bindi Bindi Mia Refuge includes five new crisis accommodation units and integrated, trauma-informed support for up to five women and their children, allowing them time to heal, recover, and thrive.

The new service is being delivered by Indigo Junction, a not-for-profit organisation with a long-standing commitment to supporting vulnerable families and individuals in the Midland area.

In addition to crisis accommodation services, the new refuge will offer advocacy, safety planning, and information to help victim-survivors begin their journey to recovery.

Indigo Junction also operates the well-regarded Koolkuna Women's Refuge and has been providing place-based responses to family and domestic violence and homelessness for more than 45 years.

This investment in the Bindi Bindi Mia Refuge will boost crucial crisis accommodation capacity in the Midland area.

This refuge takes the number of additional units for victim-survivors of family and domestic violence to 100.

Midland MLA Steve Catania said the new refuge



Inside the new Midland refuge.

was in good hands with Indigo Junction and was a step in the right direction for addressing domestic violence and making sure supports were in place.

"The opening of the Bindi Bindi Mia Refuge is an important step forward in addressing the impacts of family and domestic violence in our community and will provide vital support for women and children," he said.

"Indigo Junction has a track record of supporting local families, and their deep connection to the Midland community will ensure the delivery of safe and compassionate support close to home."

Cont. p18.



Prevention of Family and Domestic Violence Minister Jessica Stojkovski with Department of Communities and Indigo Junction staff.

## ABS

### Stay safe this long weekend

- ✓ Logbook Servicing
- ✓ Clutch Service & Replacement
- ✓ Tyres
- ✓ Commercial Brake & Clutch Repairs
- ✓ Interest Free Finance
- ✓ Minor Servicing
- ✓ Steering & Suspension
- ✓ Vehicle Diagnostics

- ✓ Air Conditioning Service & Repairs
- ✓ Major Service
- ✓ 4WD Service
- ✓ Batteries
- ✓ Loan Cars
- ✓ Brake Services & Repair
- ✓ Mechanical Repairs
- ✓ Vehicle Inspections
- ✓ Reconditioning & Machining Services

**Book your car in for a service today!**

**(08) 6161 4636**

- Meet the new owners
- Trusted mechanics

[www.absautomidland.com.au](http://www.absautomidland.com.au)



Shire of Mundaring councillor Prapti Mehta said the new policy was a way to recognise people's need to grieve.

# New Mundaring memorial policy

GUANHAO CHENG

**MUNDARING shire council approved a new memorial policy to provide a framework to formally assess applications for permanent memorials in the area.**

During the April 14 ordinary council meeting, a motion was moved by councillor Prapti Mehta who said the policy sent an important message to the Mundaring community that council was supportive during grief.

"This is an important policy because through it we, as a council, can once again display that we are empathetic and we acknowledge the fact that people lose loved ones and they need to remember them," she said.

Cr Mehta said it formed a foundation to support people's needs while also providing a system for council to

respond to requests safely, and within budget and reason.

"(It provides) a framework so our staff can make decisions on how best to work with someone who has lost a loved one and to help them get what they want," she said.

"Sometimes that may not be possible but at least we'll have a framework we can use to make decisions while balancing compassion with responsibility."

Shire of Mundaring Mayor Paige McNeil also spoke for the policy.

She said the policy was brought to council by Shire of Mundaring built and natural environment director Shane Purdy due to an increased number of requests for memorials in Mundaring.

"Even to provide a park bench with a plaque on it has a considerable

cost to it," she said.

"As Cr Mehta aptly said, there is the maintenance of that bench for its life cycle as well."

Ms McNeil said roadside memorials were not covered by this new policy and would continue to be regulated based on Main Roads guidelines.

The policy's scope covers requests for memorials in areas including public open spaces, parks, reserves, trails, ovals, community facilities and roads managed by the shire.

The type of memorials supported are roadside memorials, commemorative furniture and memorial walls.

The Shire of Mundaring mirrors Main Road's guidelines for roadside memorials with approval to last up to 24 months but may be extended based on family wishes and site suitability.

Commemorative furniture covers park benches with a plaque on it and while the plaque's supply, installation, maintenance and replacement cost will be covered by the person applying for it, the furniture itself is maintained by shire funds.

Memorial walls in shire cemeteries are another lower cost alternative and will consider applications for plaques only but not ashes.

Historical memorials, such as war memorials, or the naming of places and facilities are not covered by the new policy and continue to be managed under other processes.

Ms McNeil said the policy was now at a financially sustainable and respectful position, thanking shire staff for the work needed to create it.

The policy was passed unanimously.

## Quarantine area declared to stop Qfly

A QUARANTINE area has been declared for South Perth suburbs to help eradicate Queensland fruit fly (Qfly) and stop the pest from spreading, with the current orange zone extending to the eastern suburbs.

The move comes after the destructive fruit fly was detected in the Department of Primary Industries and Regional Development's (DPIRD) early-warning surveillance traps in South Perth and Como.

DPIRD Chief Plant Biosecurity Officer Vincent Lanoiselet said extra trapping had helped define the quarantine area.

Dr Lanoiselet said a quarantine area red zone covered more than 7000 properties in South Perth, Como, Kensington, Bentley and East Victoria Park – within a 1.5km radius of the Qfly outbreak.

Residents and businesses in the red zone

are required to pick all ripe and ripening fruit and fruiting vegetables from Qfly host plants as well as fallen fruit.

Any fruit that is not eaten or processed must be solarised - secured in a black plastic bag in the sun for seven days - before being placed in the general waste bin, not the food organics, garden organics (FOGO) bin.

Home grown host fruit and fruiting vegetables must not be moved within or outside of the red zone. Only cooked, frozen dried or preserved fruit can be moved.

An orange zone is also in place covering a broader 15km radius from the Qfly infestation to provide a buffer and prevent further spread of the pest.

Host fruit and fruiting vegetables must not be moved outside of the orange zone unless treated.

An interactive quarantine area map, list of affected plants and information on movement, treatment and disposal requirements is available on the DPIRD website [www.dpird.wa.gov.au/qfly](http://www.dpird.wa.gov.au/qfly)

Dr Lanoiselet said DPIRD's response team was in the field undertaking inspections and applying registered organic baits to trees on residential and commercial properties.

"DPIRD is working with residents, industry and businesses to make them aware of the important quarantine measures to help us eradicate Qfly," Dr Lanoiselet said.

"We are calling for the support of everyone in the quarantine red zone to pick ripe and ripening fruit and not move fruit to help break the pest's life cycle and stop it from spreading to other suburbs and our horticultural areas. **Cont. p18.**



Residents are urged to check the quarantine area map and measures to help eradicate Qfly.



**MAZENOD  
COLLEGE**

*Moments of Grace*

## Mazenod College Anniversary

# 2026 *Event*

Past Students and Staff, and current Parents and Community members are warmly invited to join us for the 60th Anniversary Gala Ball.



SCAN TO SECURE YOUR TICKETS

# GALA BALL

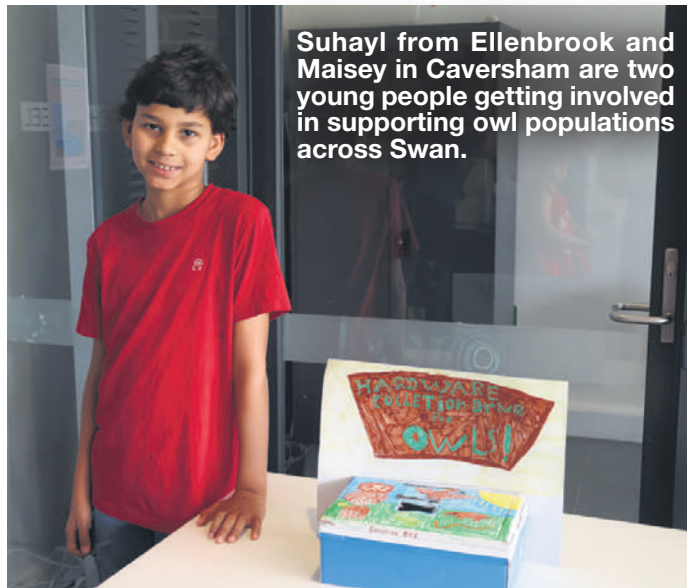
Saturday 23 May 2026 at 6:00pm

PAN PACIFIC HOTEL

207 Adelaide Terrace, Perth

TICKETS NOW AVAILABLE ONLINE  
<https://www.trybooking.com/DJXWX>

**Ticket Sales  
Closing Soon!**



Suhayl from Ellenbrook and Maisey in Caversham are two young people getting involved in supporting owl populations across Swan.

# Swan youth backing owl nest project

**GUANHAO CHENG**

**YOUNGER volunteers across the City of Swan have been building and contributing spare hardware items to be repurposed into artificial owl hollows.**

The scarcity of natural tree hollows has pushed volunteers from North Swan Landcare Group (NSLG) residents to make nesting boxes by hand which are giving local owl species the chance to live on.

NSLG are calling for residents to get involved by checking their homes for unused items such as medium sized butt hinges, bolt padlocks, old wooden broom handles, L-shaped shelf brackets, metal handles and hardwood offcuts.

These materials will be used to construct durable and functional owl homes.

The project, being carried in partnership with the Bullsbrook Community Men's Shed, is building strong community connections too.

Eleven-year-old Suhayl from Ellenbro-

ok has taken the initiative to create his own owl donation box, now located at the Ethel Warren Community Centre in Bullsbrook.

Suhayl said he recognised the importance of having owls in the area for controlling rodent populations and said the process of making the box was fun.

"I think we should save the owls," he said.

"They're the ones that kill most rats and mice (and) if they disappear, we'll have a much bigger problem.

"More pests mean more poison, and that harms other animals too.

"(Owl boxes) attract owls to live in the area and raise their young (and) farmers can use them to naturally control rodents.

"Plus, they're fun to make and can be built from recycled materials."

Over east, a similar initiative started in 2025, called Owls Eat Rats, has been integrated into farms in New South Wales, relying on barn owls to replace reliance on poisons for rodent control.

According to the Owls Eat Rats project team, their monitoring showed that a single owl breeding cycle has had the capacity to remove around 1000 rats.

"At our monitored sites, we've identified multiple breeding events occurring in the same boxes within a single season," they said.

The project team said the project had a three-year model where the first was about establishing owls in the habitat, second year involved stabilising rat populations, and the third year was about moving into sustained predation.

Materials needed to create owl nest boxes include 50-60mm bolt latches, butt hinges, L-shaped brackets, corrugated iron sheets and old broom handles.

Donation points are now available at key locations including the Ethel Warren Community Centre in Bullsbrook, Australian Premium Feeds on Frigate Way Bullsbrook, Michelle Maynard's Office on Main Street in Ellenbrook, and the Caversham Café in Caversham.

## Youth photograph comp



**CHILDREN and young people are invited to enter Snapshot WA, a new free statewide photography competition in celebration of Youth Week WA 2026.**

Open to young people aged eight to 17 living in Western Australia, Snapshot WA provides an accessible way for participants to submit original photographs online and share what matters most in their lives.

Snapshot WA invites young people to reflect on their everyday experiences, their communities, and the places that give them a sense of belonging, aligning with this year's Youth Week WA theme 'Strength in Our Stories'.

Participants may submit photos under any of the following six themes: My Day/My Life, What Matters to Me, Things That Make Me Happy, Places I Belong, My World and Home.

Commissioner for Children and Young People WA Dr Jacqueline McGowan-Jones said children and young people are the experts on their own lives.

"Snapshot WA gives them a platform to show us their world on their own terms and in their own way, and that visibility is something we have an obligation to create.

"This competition is free, open to any young Western Australian aged eight to 17, and all you need to enter is a photo that feels true to you. We hope young people from every corner of the state take part.

"We know that when young people are genuinely included and their perspectives are sought and taken seriously, better decisions follow. Photography is a powerful way to communicate lived experience," she said.

Entries are open now until May 28 and can be submitted digitally through [www.ccp.wa.gov.au](http://www.ccp.wa.gov.au)

# Anzac Day events 2026



Service	Address	Time	Contact
Bellevue RSL sub-branch	Bellevue RSL Hall 2 Purton Place, Bellevue	12.15pm	0490 501 177 <a href="mailto:bellevuersl@gmail.com">bellevuersl@gmail.com</a>
Ballajura RSL sub-branch	Ballajura Memorial Peace Park 258 Illawarra Cres South, Ballajura	6am	<a href="mailto:events@rslwa.org.au">events@rslwa.org.au</a> Lionel Delamotte, sub-branch Secretary 0447 555 237
CWA Gidgegannup	Gidgegannup Agricultural Showgrounds 2171 Toodyay Road, Gidgegannup	6am	Terrienne McDonald, Community Coordinator 0435 394 157
Ellenbrook RSL sub-branch	Ellenbrook District Open Space (North) 27 Maffina Parade, Ellenbrook	6am	June O'Neil, sub-branch secretary 0411 043 887 <a href="mailto:Secretary.ellenbrook.rsl1@gmail.com">Secretary.ellenbrook.rsl1@gmail.com</a>
Bullsbrook Districts RSL sub-branch	Bullsbrook Districts RSL Hall 6 Hurd Road, Bullsbrook	6am	<a href="mailto:bullsbrookrsl@bigpond.com">bullsbrookrsl@bigpond.com</a> Penny de Grussa 0438 301 892
Eastern Regional RSL sub-branch	Stirling Square Meadow Road, Guildford	6am	<a href="mailto:easternregionalpresident@sb.rslwa.org.au">easternregionalpresident@sb.rslwa.org.au</a> Ashley Vince 0438 301 892
Midland and Districts Historical Society	Railway Workshops, Midland Junction, Midland	8.30am	<a href="mailto:historymidland@gmail.com">historymidland@gmail.com</a>
Midland Workshops Community Groups	Midland Railway Workshops Soldiers Memorial Yelverton Drive, Midland	8.30am	Mark Richards Mobile: 0417 942 472 Midland Workshops Community Groups: <a href="mailto:Bellevue.assoc@gmail.com">Bellevue.assoc@gmail.com</a>



# Swan to inspect Ellenbrook skatepark safety



The City of Swan says it will inspect Ellenbrook skatepark following safety concerns raised by local riders and a community petition calling for upgrades. Picture: Daniel Holmes

## DANIEL HOLMES

**THE City of Swan says it will inspect Ellenbrook skatepark following safety concerns raised by local riders and the creator of a community petition calling for upgrades.**

As reported in *Dropping into danger at Ellenbrook skatepark* (*Echo News*, April 24) local skatepark users had raised concerns about cracked concrete, damaged coping, slippery surfaces in the main bowl and broken drink fountains at the park.

The petition, started by local resident Ethan Kickett, has now attracted more than 190 supporters and calls for urgent repairs or a full redevelopment of the facility.

Following direct correspondence from the petition organiser, the city said the condition of the skatepark would be assessed.

"The city is aware of the petition, will inspect safety concerns raised and remediate where required," City of Swan chief executive officer Stephen Cain said.

Mr Cain said the petition had prompted further communication between the City and residents

about the condition of the facility.

"The city has recently received direct correspondence from the petition owner regarding the skatepark, and in response to this an inspection will be undertaken and work will be carried out where required," he said.

During *Echo News'* visit to the park last week, multiple cracks and uneven concrete were visible throughout the skatepark, with sections appearing to have been roughly patched or filled.

Local riders also pointed to peeling paint inside the bowl, broken drink fountains and damaged railings around the park.

Mr Kickett previously told *Echo News* the main bowl was the biggest concern because of the risk of falls and injuries.

"The main issue is safety, particularly in the bowl. It's damaged and near unrideable," he said.

He said he hoped the petition would lead to action from the city and improvements to the facility.

"At the very least I'd like to see fixes to current damages like fixing cracks, coping and the bowl surface," he said.

# eye on crime

## Swan View fatal crash investigation

**MAJOR crash investigation officers are seeking the public's assistance following a fatal crash in Swan View on Monday, April 20.**

About 6.40pm, a male rider of an e-bike was involved in a collision with a public bus at the intersection of Marlboro Road and Morrison Road.

The rider, a 50-year-old man, sustained critical injuries and died at the scene.

Major crash investigators urge anyone who witnessed the crash, or has information that

may assist the investigation, to contact Crime Stoppers online at [www.crimestopperswa.com.au](http://www.crimestopperswa.com.au) or by calling 1800 333 000.

Anyone with CCTV, dash-cam or mobile phone vision relating to the crash is urged to upload the footage directly to investigators via the following link: [https://wapf.au.evidence.com/axon/community\\_request/public/fatalbu\\_crashswanview](https://wapf.au.evidence.com/axon/community_request/public/fatalbu_crashswanview)

If you or someone you know has been affected by a road crash, support is available through Road Trauma Support WA on 1300 004 814.

## Viveash serious crash investigation

**OFFICERS from the major crash investigation section are investigating a crash that occurred in Viveash on Friday, April 17.**

About 2.25pm, a silver Ford Territory was travelling in an easterly direction on Muriel Street, near Cranwood Crescent, when it left the road and collided with a tree.

A four-year-old female child and a three-year-old female child were conveyed to Perth Children's Hospital for treatment of life-threatening injuries sustained.

The 24-year-old male driver of the vehicle and the 24-year-old female passenger were conveyed to Royal Perth Hospital for treatment of serious injuries received.

Investigators believe the Ford Territory and its occupants were at Reg Bond Reserve on Bernley Drive, Viveash, two hours prior to the crash and are urging anyone who saw the vehi-



cle or occupants in the area during that time to come forward.

Investigators also wish to speak to the driver of a silver Mitsubishi Triton bearing Victorian license plates, which was travelling along Muriel Street around the time of the crash, as the driver may have information that will assist with inquiries.

Anyone with information relating to this crash, the Ford Territory at Reg Bond Reserve prior to the crash, or the Mitsubishi Triton, is urged to contact Crime Stoppers online at [www.crimestopperswa.com.au](http://www.crimestopperswa.com.au) or by calling 1800 333 000.

Anyone with dash cam or mobile phone vision relating to this crash is urged to upload the footage directly to investigators via the following link: <https://wapf.au.evidence.com/axon/community-request/public/mcis2026-088>

Police want anyone with information regarding the above incidents to call Crime Stoppers on 1800 333 000 or you can make a report online at [www.crimestopperswa.com.au](http://www.crimestopperswa.com.au)



**ST. BRIGID'S COLLEGE**

**St Brigid's College, Pre-Kindergarten to Year 12 at your hill's doorstep**

At St Brigid's College, the value of education is nurtured from the very earliest years through to graduation, within a Pre-Kindergarten to Year 12 learning community.

As a co-educational Primary School and a girls-only Secondary College, St Brigid's provides a faith-centred, contemporary education that supports students to flourish at every stage.

Within the Primary Campus, the Early Learning Centre offers a safe, stimulating and supportive environment for children aged three to six, where each child is known, valued and inspired.

Guided by evidence-based practice, the Western Australian Curriculum and the Early Years Learning Framework, learning is enriched through inquiry and the Reggio Emilia philosophy, recognising children as capable, curious and rich in potential.

Through a balanced approach of play-based learning, explicit instruction and meaningful exploration, students develop strong foundations in literacy, numeracy, and social and emotional wellbeing.

Thoughtfully designed indoor and outdoor learning environments

encourage creativity, independence and a love of discovery.

This approach includes the St Brigid's Bush School which is weaved into the curriculum, where our young learners are guided by experienced early childhood educators, children engage in play-based learning that nurtures curiosity, resilience, creativity and confidence.

Through hands-on experiences in nature, children build foundational skills while developing a deep sense of connection to the world around them.

As students progress into Pre-Primary and the Middle Years, academic foundations are strengthened through structured programs, specialist learning and co-curricular opportunities.

In the Middle Years from Year 3 to 6, the curriculum offers specialised teaching in the areas of Music, Visual Arts, Performing Arts, Science, Design & Technology and Sport.

Supported within a connected K-12 community, students grow in confidence, resilience and independence, preparing them for a smooth transition into Secondary School and success beyond the classroom.

**ST. BRIGID'S COLLEGE**

**Bush School Experience**

Come and experience the joy of play and learn in nature designed for children aged 3 to 5 years

The first Bush School session for 2026 will be

- Wednesday 6 May
- 9.00am - 10:30am

Register Now [www.trybooking.com/DKYECC](http://www.trybooking.com/DKYECC)

For enquiries, contact [communityrelations@stbrigids.wa.edu.au](mailto:communityrelations@stbrigids.wa.edu.au)

200, Lesmurdie Road, Lesmurdie 6076

## Pre-loved fashion parade gives support to Ellenbrook families

ELLENBROOK volunteers are set to come together in style to support local families doing it tough with a curated winter fashion fundraiser set to showcase pre-loved pieces from the Vinnies Ellenbrook shop at Holy Cross College from 2pm to 4pm on Sunday, May 3.

Bringing together local volunteers, businesses and supporters for a meaningful cause, the parade will showcase a range of pre-loved pieces generously provided by Vinnies Ellenbrook, with models from Dene Selby Modelling Agency also set to volunteer their time.

All funds raised from the event will go directly towards Vinnies Ellenbrook Conference, which supports local residents facing hardship by providing food, vouchers for fuel and clothing as well as help with covering bills and other expenses.

While the event will showcase how preloved fashion can be as trendy as buying new, it also highlights local community spirit as people band together to help those less fortunate.

Vinnies WA's emergency relief program plays a vital role in supporting individuals and families facing financial hardship, with an increasing demand driven by rising cost-of-living pressures.

The Ellenbrook Conference currently has 19 dedicated volunteers who give their time to ensure people are supported when they need it most.

Local residents are encouraged to attend the fashion parade and support the cause, while enjoying an afternoon celebrating style, sustainability and community spirit.

St Vincent de Paul Society Ellenbrook Conference member Diane Harper said the event was a wonder-



A Vinnies WA Ellenbrook shop volunteer tries on some of the preloved pieces that will be paraded at the fashion fundraiser.

ful example of people coming together in the local community to support one another.

"Every dollar raised will go straight back into helping local families who are doing it tough, and that's what makes this so special," she said.

"Through the Ellenbrook Conference, we see firsthand how important it is to be there for people when they need it most.

"This event is a great reminder that helping your community, and the environment, can go hand in hand.

"By showcasing pre-loved clothing from our Vinnies shops, we're not only raising funds for local families in need but also promoting a more sustainable way to shop and give back."

Tickets are \$20, which include refreshments and entries to win door prizes, as well as the opportunity to browse pre-loved items at a pop-up stall curated by Vinnies Ellenbrook and can be purchased through Gail by contacting on 0405 163 096 or Mary on 0422 754 387.



Buglers and bagpipe players from previous years when the Midland Railway Workshops service was held.

## Midland ANZAC service revival continues

THE ANZAC Day service at Midland Workshops is returning again this year with organisers inviting the community to be part of its revival.

The service will begin at 8.30am at the Peace Memorial at the former Midland Railway Workshops, hosted on behalf of the Midland Workshops community groups.

Event organiser Mark Richards said the service had been inactive prior to COVID but was brought back by City of Swan groups determined to see it continue.

"The service was inactive for quite some time, so we brought it back and each year it's grown bigger and better," he said.

Community groups involved include the Midland Districts Historical Society, Machinery Preservation Club of WA, Hand Tool Preservation Society of WA, the 1904 Blacksmiths group and the CWA Midland branch.

Mr Richards said the service had steadily rebuilt in recent years and encouraged people to attend and experience it.

This year's event will include Guildford Grammar cadets, the Midland Scout Group and participation from Bellevue RSL, with an ex-serviceman delivering the Ode.

A commemorative address will be delivered by Steve Petrucciani, alongside a piper and chaplain.

Mr Richards said the service had evolved from modest beginnings into a more complete ceremony. "I started off with a USB drive for the bugle and

national anthem, and from there we've grown to have a bugler playing from the staircase, which adds a very nice touch," he said.

Following the service, attendees will be offered refreshments including egg and bacon burgers provided by Ritz Cafe, as well as a coffee cart and morning tea hosted by the CWA.

Mr Richards said the event was not only about remembrance but also about reconnecting the community with the Peace Memorial site.

"You've got such a lovely Peace Memorial that had been inactive for quite a period of time, and this is about activating that area," he said.

"We just want people to come along and be part of the service."

Mr Richards said his involvement was also personal, shaped by a lifelong appreciation for servicemen and women.

"I've been around servicemen all my life, and there's a huge appreciation for past and present servicemen and women," he said.

"It's my way of saying thank you."

He also highlighted the legacy of Lieutenant Colonel Thomas John Todd, who served as second-in-command of the 10th Light Horse during the First World War and has ties to Bellevue.

"It's a day of recognition and supporting ex-servicemen and women," Mr Richards said.

The Midland Workshops service has no set capacity, with space available across the lawn and surrounding areas for those attending.



The Centre for National Resilience in Bullsbrook. Picture: Courtesy ABC News.

## Labor's latest prison plan comes under fire

MIKE PEETERS

A PURPOSE-built 500-bed former COVID quarantine facility in Bullsbrook that has sat idle since its completion in 2022 is now being put forward by the state government as a possible prison.

Up until now the \$400 million Centre for National Resilience has represented a significant cost to taxpayers with no clear long-term plan.

And although the decision about the Bullsbrook site's future lies officially with the federal government the WA state government has flagged the idea of using it as a new prison.

The compound is about 40 minutes east of Perth leading the WA government to argue it is too isolated for housing homeless or rough sleepers.

The Australian Federal Police (AFP) has also expressed interest in utilising the facility as a training site similar to how the Brisbane quarantine facility was repurposed for the AFP in 2024.

Apart from being used to house about 70 residents forced to flee their homes after the Mariginiup bushfires in 2023, the facility has remained almost completely unused.

Liberal MLC Anthony Spagnolo has raised serious concerns about the prison plan.

"The proposal highlights ongoing issues with the government's planning and priorities, particularly in communities like Bullsbrook that are already feeling overlooked," Mr Spagnolo said.

"Bullsbrook residents have already been dealing with repeated power outages this year, with delays

to fixes leaving families frustrated and concerned, especially given the bushfire risks in the area.

"Now, after years of inaction on this facility, the government's answer appears to be dropping a prison into the community."

Mr Spagnolo said the situation reflected a broader pattern under the Cook Labor government.

"Time and again we are seeing major decisions made without proper planning or consultation and communities left to deal with the consequences," he said.

"The government should provide a clear and detailed explanation of its intentions for the site and how it aligns with the needs of the local community.

"These decisions have real impacts on people's lives, and they need to be made with proper planning, proper consultation, and a clear understanding of the consequences."

Member for Swan Hills Michelle Maynard MLA said she would work with the minister's office to communicate the community's views on any proposal for the future of the Centre of National Resilience.

"As has been made clear by homelessness advocacy groups it is clearly not acceptable to house people in the short term," Mrs Maynard said.

"But it's critical we expand the prison estate and I know the Labor government is continually reviewing options to manage prison capacity and ensure the safety of the community."

Minister for corrective services Paul Papalia said the government's focus remained on maintaining a safe, secure and effective corrective services system.

# SMILE

@ Foothills Denture Clinic



- ✓ New full dentures & partial dentures
- ✓ New implant retained over dentures
- ✓ Denture repairs & relines
- ✓ Sports mouthguards

DENTAL PROSTHETISTS



MALCOLM J McARTHUR



RAYNEE McARTHUR

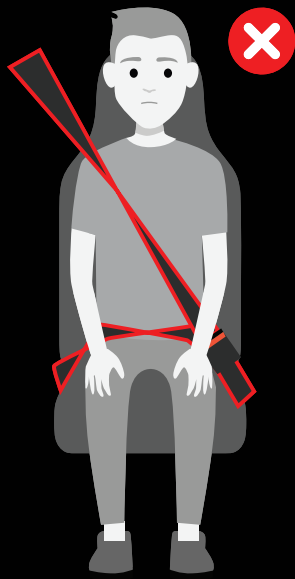
Phone  
**9250 1733**  
for an appointment



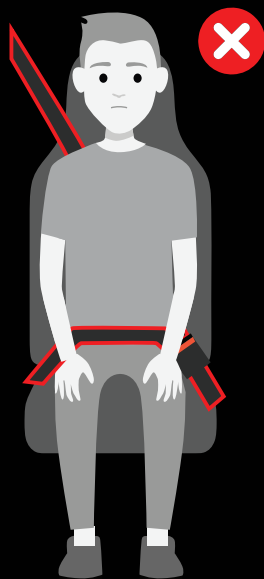
SHOP 4, 16 THE AVENUE, MIDLAND  
[www.foothillsdenture.com.au](http://www.foothillsdenture.com.au)

We also deal with Veterans' Affairs and all health funds through HICAPS | HICAPS | hbf | medibank

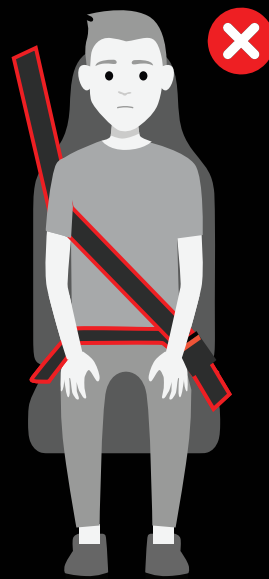
# THERE'S ONLY ONE WAY TO WEAR A SEATBELT



**Twisted  
seatbelt**



**Chest sash  
behind the back**



**Chest sash  
under the arm**



**Correctly worn  
seatbelt**



For information about seatbelt safety and infringements,  
including exemption requests, please visit [wa.gov.au/seatbelts](http://wa.gov.au/seatbelts)



National  
Fuel Security  
Plan

To keep Australia moving, the government has been working to secure fuel supply and has put in place the 4-level National Fuel Security Plan.

We're now at Level 2. So, consider simple actions to use less fuel, like using your car less.

# Every little bit helps

For fuel saving tips, visit [fuelplan.gov.au](http://fuelplan.gov.au)

- 4 PROTECTING CRITICAL SERVICES
- 3 TAKING TARGETED ACTION
- 2 KEEPING AUSTRALIA MOVING**
- 1 PLAN AND PREPARE

National Fuel Security Plan



Australian Government

Howard Park bottling line. Picture: Ovis Creative



# Wine industry calls for delay to container deposit scheme

**THE WA wine industry is calling on the state government to reconsider the introduction of the container deposit scheme (CDS), claiming it will put thousands of jobs at risk in what is widely considered the Australian wine industry's most challenging time in history.**

The Friends of WA Wine group says that the CDS, which is due to be implemented on July 1, will put WA producers at a serious disadvantage to those in other states where it is not scheduled to be introduced until 2027, placing an \$11 million impost on the WA industry.

A spokesperson for the group said that WA was already a leader in sustainability in the wine industry, and implementing the CDS now would add considerable costs for little immediate environmental impact.

Participating consumers would receive a 10c refund for returning a bottle, but the complex layering of the Wine Equalisation Tax (WET) and GST, coupled with the added administrative, logistics and labelling costs, means the actual cost to all wine buyers in WA is estimated to be between \$1.15 and \$1.25 per bottle.

"The math simply does not add up for WA's array of family winemakers or regionally-based producers," WA wine critic and journalist Ray Jordan said.

"Wineries are being asked to implement a policy that targets less than 1 per cent of the state's litter at an annual cost of up to \$11m to the industry.

"This is a solution that costs far more than it is worth, putting 4000 regional jobs at risk for a mere 2 per cent projected increase in glass recovery. And wine drinkers lose out as producers have no choice but to pass on the costs of the scheme to keep business afloat," Mr Jordan said.

A spokesperson said the industry is disappointed that despite approaches to the premier and environment minister, and the delivery of an open letter signed by 230 WA wine producers by the Wines of

Western Australia Association, the government has failed to recognise the impact of introducing this scheme when the industry is already adjusting to declining global demand for wine and rising costs.

Among concerns is that it provides an unfair regional disadvantage as WA is implementing the scheme one year ahead of other states, leaving local producers with a disadvantage to eastern states' wineries that do not yet face these costs in an already challenging market.

"Unlike fast-moving consumer goods, wine is an agricultural product with aging cycles of up to five years, meaning the CDS adds significant upfront administrative and labelling costs years before revenue is realised," a spokesperson said.

"There is currently no bottle manufacturing capacity in Western Australia which means all locally recovered glass must be sent to South Australia to be reconstituted back into glass bottles.

"Transporting this cullet creates challenges including additional transport costs and related emissions which threaten the long term viability of glass recovery through the current CDS framework."

He said wine bottles represent less than 1 per cent of the WA litter stream as customers already use available mixed material recycling bins to recycle a majority of wine bottles with the proposed extension seeking only a two percentage point gain in recovery at a massive industry expense.

Western Australian winemakers are already national pacesetters on a variety of sustainability metrics, with the state currently boasting one of the highest adoption rates for the national Sustainable Wine-growing Australia program with 75 per cent of member wineries currently fully certified, significantly higher than the national average of 55 per cent.

The Friends of WA Wine are calling on the premier and the environment minister to pause the July implementation and engage in meaningful dialogue.

# More funding needed for homeless youth

**STATE and federal governments must commit to long-term funding for services to provide essential supports for young people experiencing homelessness, according to the Youth Affairs Council of WA (YACWA).**

"This includes adequately funding services across the housing continuum and addressing the root causes of youth homelessness," YACWA chief executive officer Kylie Wallace said to mark last week's Youth Homelessness Matters Day.

"Western Australia is in a youth homelessness crisis.

"In the richest state in Australia, all children and young people should have a safe place to call home. Youth Homelessness Matters Day reminds us that we need communities and governments to work together to end youth homelessness."

More than 2000 children and young people are supported by specialist homelessness services on any given day in WA, a 17 per cent increase from the year before.

Youth homelessness often does not happen in isolation, as young people face several compounding factors such as family and intimate partner violence (FIPV) and mental health challenges.

The Ending Child and Youth Homelessness (ECYH) Coalition, founded by Mission Australia, Vinnies WA and Indigo Junction and now supported by YACWA, Shelter WA, WACOSS, the WA Alliance to End Homelessness and other youth accommodation service providers, represent the communal efforts needed to drive change.

"ECYH demonstrates the power of collective advocacy in creating better futures for all young people. These collaborative efforts have enabled us to establish sector-driven initiatives, such as the youth rough sleeper coordination group, to find safe accommodation for children and young people experiencing homelessness," Mission Austral-



ia's Homelessness regional leader and coalition representative Elise Jorgensen said.

Despite efforts from the community services sector, the supports for young people are severely underfunded.

More than half of the children and young people presenting to these services are turned away because they are not sufficiently funded to accommodate them which is traumatic for young people and the frontline services supporting them.

"In order for us to end youth homelessness, we need to fund and resource the necessary services to support them. They provide young people with safe, stable environments, which enable them to rebuild their lives and achieve secure, long-term housing outcomes," Passages Youth Engagement Hub coordinator Aime Robinson said.

"We must invest in these essential services so that young people can be supported towards a better future. Young people who reach their full potential are an economic and social asset to Australia."

For more information go to [www.yfoundations.org.au](http://www.yfoundations.org.au)

**Now Available!!**

Hello, Neo.



**Pick-up or Order a New MacBook Neo**  
*Apple's Latest Arrival*  
Limited Stock Available in Store  
Prices Start at \$899 or \$1099

**Order New MacBook Air M5**

Prices Start at \$1799 (for 13") \$2199 (for 15")  
New iPad Airs and M5 MacBooks also available.

**Order One at Macs4u**  
and arrange free data transfer and training

**Financing Your New Mac?**

**Get one with Studio19 Rental's Help**

- 6 to 36 month rental or buy at any time) \*Prices may vary
- New \$899 MacBook Neo A18 - from \$39 per month\*
- New \$1799 MacBook Air M5 - from \$77 per month\*
- New \$2699 MacBook Pro M5 - from \$116 per month\*

**Looking For Refurb or Used**  
visit [restorationmac.com.au](http://restorationmac.com.au)



**Macs4u.com.au**

Celebrating 23 years of retail in Midland

269 Gt Eastern Hwy Midland WA 6056  
08 9274 7111 0410 501 441  
[info@macs4u.com.au](mailto:info@macs4u.com.au)



# CARING FOR YOUR PETS

**DOG & CAT FOOD, PRODUCE FOR COWS, HORSES, SHEEP, ALPACAS & POULTRY. SMALL SUPPLIES OF HORSE ACCESSORIES & MEDICINAL SUPPLIES**

**WE ARE NOW STOCKING NATURAL ANIMAL NUTRITIONISTS PRODUCTS!**

Ask our friendly staff for more information about their wormers and anti inflammatories.

**24hr DIY DOGWASH**



**WE SELL RABBITS, BIRDS, GUINEA PIGS, MICE, RATS & CRAZY CRABS**



**We now sell ICE, THE WEST AUSTRALIAN and THE SUNDAY TIMES.**

**We Sell Mealworms, Crickets and Woodies**

**NOW OFFERING KEY CUTTING (MON-FRI)**

**BEGONIA PETS & PRODUCE**

OPEN 7 DAYS: MON-FRI 8am-5.30pm  
SAT 9am-5pm • SUN 9am-1pm

5895 GREAT EASTERN HIGHWAY (cnr Coppin Rd), MUNDARING

**9295 2001**

[shop@begoniapets.com.au](http://shop@begoniapets.com.au)

Exchange your gas bottles (Supagas) here!

Follow us on & to see our specials





L-R Angela Eastman - White Room Framing Studios, Kerry Richardson - Overall Prize Winner, Mayor Margaret Thomas & John Eden - Local Winner.

## Calling all creatives: Kalamunda Art Awards return in 2026

Artists across the Hills and beyond are invited to put their best work forward for the Kalamunda Art Awards 2026, a much loved annual exhibition celebrating creativity in all its forms.

This non acquisitive exhibition offers artists the chance to showcase their work, compete for a \$5,000 total prize pool, and sell their artworks to the public. Awards include a \$3,000 Overall Winner, category prizes for 2D, 3D and environmentally aware works, and a People's Choice Award.

Entries close 3 May 2026, with shortlisted artists notified shortly after. The exhibition

opens on Saturday 6 June and runs until 28 June 2026, giving visitors the opportunity to experience a diverse range of artistic styles, media and themes.

With limits designed to accommodate both wall based and sculptural works, the Awards encourage artists to submit a single standout piece that reflects their creative vision.

Whether you're an emerging or established artist, this is your chance to be part of a celebrated local exhibition and share your creativity with the Kalamunda community.

For more information visit <https://www.kalamunda.wa.gov.au>

## Kalamunda Art Awards

6-28 June 2026

**CALL FOR ENTRIES NOW OPEN!**

Artists are invited to enter, go to: [www.kalamunda.wa.gov.au](http://www.kalamunda.wa.gov.au)

**ENTRIES CLOSE 3 MAY 2026**

**PRIZE POOL OF \$5,000**

Open to all West Australian Artists

### EXHIBITION DATES

6-28 June 2026

Zig Zag Gallery  
50 Railway Road, Kalamunda

View and buy artworks

Vote in the People's Choice



WA's MOST EXCITING & ENTERTAINING COLONIAL FESTIVAL!  
Live Entertainment, Markets, and Much More!"

# MOONDYNE FESTIVAL

Celebrating History, Culture, and Fun



Sunday 3<sup>rd</sup> May 2026

In Toodyay, WA

[www.moodynefestival.com.au](http://www.moodynefestival.com.au)

<https://www.facebook.com/Moodynefestival/>



## 42<sup>nd</sup> Annual Toodyay Moodyne Festival

TOODYAY will celebrate its 42nd Moodyne Festival stepping back in time to celebrate the life and times of the iconic Avon Valley bushranger Moodyne Joe by bringing his escapades and mock trials

to life on Sunday, May 3 from 9am to 4pm on Stirling Terrace.

The festival is the state's premier colonial festival, first held in 1984 to celebrate the life and times of Moodyne Joe (Joseph Bolitho Johns), and starts with an opening ceremony at 10am where locals and guests are encouraged to dress in 19th century costumes for a colourful procession down the main street.

Some period costumes are available for loan by emailing [moodynecommittee@gmail.com](mailto:moodynecommittee@gmail.com)

Cheer on Joe's gang and the floozies, coppers, swaggie and town crier as Joe is chased by the coppers, tried by a kangaroo court, convicted by a corrupt judge and escapes with the assistance of local people and his gang who all love the WA equivalent of Ned Kelly or Robin Hood.

As well as the street entertainment, there will be more than 90 variety and food stalls, displays, performances and demonstrations, the 10th Light Horse display, Barn Baby's Animal Farm, Western Australian Reptile Park, vintage motor vehicles and bikes, and rides on the horse and cart or mini train.

Local Toodyay artists will be playing as well as the Pioneers Bush Band, Jarrah Celts, Darren Gil-

lis and Paul Davis Entertainment, Avon-Fun Dance Club and The Black Chooks.

Festival goers can listen to bush poets, and Australia's early settler's folk music that will include Irish, Scottish, Italian and English music performed by various entertainers along with the popular Royal Australian Navy Band, the Coastal Scottish Pipe Band and Toodyay Community Singers.

The festival follows through the main town site to the beautiful Duidgee Park resting on the banks of the Avon River where patrons can watch the horse works, hot air balloon display and have a go at making clay animals.

Events include log chopping, blacksmithing, bush poetry, stilt walkers, horse and cart rides, reptile display, historical tools restoration, and of course the ever-popular Swaggie Camp or visit Stirling Park for amusement rides for the kids, while a visit to Moodyne Joe's cell at the old Newcastle Gaol Museum is a must do.

The mini train ride at Duidgee Park is always a highlight of the day with the event packed full of family fun and kids' entertainment including stilt walkers, carnival, face painting, petting zoo and clay modelling.

Entry is free however a gold coin donation on entry would be greatly appreciated.

For more information and to view the events program visit [www.moodynefestival.com.au](http://www.moodynefestival.com.au) or Face Book <https://www.facebook.com/Moodynefestival>

ADVERTISING FEATURE

# Local COMMUNITY EVENTS

## Spoil Mum the way she deserves this Mothers Day

This Mother's Day, it's time to celebrate the women who give endlessly, love unconditionally, and somehow hold everything together – even when life gets a little chaotic.

At Amaroo Retreat & Spa, we believe mums deserve more than just a thank you – they deserve time, space, and a little indulgence.

Whether it's a beautifully presented gift voucher for a future escape, a rejuvenating day spa experience, or a long lunch surrounded by nature, Amaroo offers the perfect way to show your appreciation. Because let's be honest – mum doesn't need another candle. She needs a moment.

We're also proud to support our local community in meaningful ways.

With rising cost-of-living pressures and fuel prices impacting everyone, we've introduced our Thursday night "Feed Me" menu – an exceptional dining experience at just \$69.

It's our way of ensuring that quality, connection, and a touch of luxury remain accessible.

At Amaroo, community isn't just a word – it's at the heart of everything we do.

From creating value-driven experiences to offering a place where locals can unwind without travelling far, we are constantly looking for ways to give back.

This Mother's Day, celebrate generously, thoughtfully, and locally. Because great mums deserve nothing less.



**MOTHER'S DAY BREAKFAST** Lounge

**EGGS ON TOAST** - Two eggs your way, bacon, toasted ciabatta GFO/DFO/NF/VO  
**BUTTERMILK PANNA COTTA** - Granola, honey, rhubarb V  
**BELGIAN WAFFLE** - Biscoff, strawberry, vanilla ice cream NF/V  
**SMASHED AVOCADO BENEDICT** - Poached eggs, smashed avocado, chilli hollandaise. Choice of ham, bacon or smoked salmon NF/VO  
**AMAROO BIG BREAKFAST** - Two eggs your way, truss tomatoes, bacon, beef sausage, mushrooms, hashbrown, house made beans NF/DFO/GFO  
**BIRCHER MUESLI** - Berry compote, chia seeds, mint DF/VG/NF  
**SHAKSHUKA** - Baked eggs, braised tomato and capsicum, toasted ciabatta V/NF/GFO/DFO/VGO  
**BREAKFAST GNOCCHI** - Pan fried potato gnocchi, field mushrooms, chorizo, roast tomatoes, fried egg, salsa verde VO/VGO/NF  
**SWEETCORN FRITTERS** - Poached eggs, tomato salsa, avocado V/DFO  
**SAUSAGE AND EGG MUFFIN** - Hollandaise, avocado, tomato relish GFO/NF

\$55 PP. PASTRIES, FRUIT PLATTER, A GLASS OF BUBBLY ON ARRIVAL FOR MUM  
 CHILDREN OVER 10 YEARS OLD ALLOWED IN THE LOUNGE ONLY

V: VEGETARIAN | VG: VEGAN | GF: GLUTEN-FREE | DF: DAIRY-FREE | NF: NUT-FREE

Be involved in our exclusive advertising features



FEATURE RUNNING 1 MAY 2026



FEATURE RUNNING 8 MAY 2026

Call Karon on 9374 6610 or email [karon.m@echo-news.com](mailto:karon.m@echo-news.com)

**ECHO** NEWS

[www.echonepaper.com.au](http://www.echonepaper.com.au)

# Upcoming events at Amaroo Retreat & Spa

*Book in now to avoid disappointment!*

RECONNECT & RECHARGE  
 Art & Lunch Experience

MAY 30 | JULY 25

**Art & Lunch Experience**

UNLEASH YOUR INNER ARTIST! CRAFT YOUR VERY OWN MASTERPIECE THEN SETTLE IN FOR A DELICIOUS TWO-COURSE LUNCH.

Tickets available online now:  
 ~ \$135 per person  
 Art session kicks off at 10:30am and flows through to 11:45am

**MOTHER'S DAY AT AMAROO RETREAT**

Sunday 10<sup>th</sup> May  
 Breakfast | Lunch | Dinner

Show Mum the love with an incredible meal at The Lounge @ Amaroo this Mother's Day.

Your choice of breakfast, lunch or dinner with all Mum's receiving a complimentary glass of bubbles.

BREAKFAST FROM 8AM  
 Includes pastries + choice of dish + drink \$55pp

LUNCH FROM 12PM OR DINNER FROM 5PM  
 2 courses \$80pp | 3 courses \$90pp

**MOTHER'S DAY LUNCH & DINNER** Lounge

**ENTREE**  
 Hand tied Burrata, Roast zucchini, pepita pesto, pickles (V, GF)  
 Kingfish ceviche, pickled radish, avocado, grapes, ponzu dressing (GF,DF,NF)  
 Confit duck rillettes, dijon mustard, giardiniera, toasted ciabatta (GFO, DF, NF)

**MAIN**  
 Harissa braised lamb shoulder, hummus, salsa verde, crispy chickpeas (GF, NF, DF)  
 Baked Barramundi, chermoula, almonds, pomegranate (NFO, GF)  
 Roast cauliflower, macadamia crumb, warrigal greens, labneh, native pepperberry (GF, NFO, VGO, V)

**DESSERT**  
 Baked chocolate tart, Miso banana, Peanut brittle (GF, NFO)  
 Rum baba, creme chantilly (NF, DFO)  
 Brown sugar pavlova, whipped white chocolate, mandarin & pistachio (GF, DFO, NFO)

\$80 FOR TWO COURSE MEAL OR \$90 FOR THREE COURSE MEAL PLUS A GLASS OF BUBBLY FOR MUM  
 CHILDREN OVER 10 YEARS OLD ALLOWED IN THE LOUNGE ONLY

V: VEGETARIAN | VG: VEGAN | GF: GLUTEN-FREE | DF: DAIRY-FREE | NF: NUT-FREE



SEE OUR WEBSITE FOR FURTHER DETAILS  
[AMAROORETREAT.COM.AU](http://AMAROORETREAT.COM.AU)  
 1200 ALISON STREET, MT HELENA

BOOKINGS ESSENTIAL / LIMITED AVAILABILITY  
**(08) 6244 4800**  
[RESERVATIONS@AMAROORETREAT.COM.AU](mailto:RESERVATIONS@AMAROORETREAT.COM.AU)

# On the trail

What's happening in the Shire

April 2026

## From the President

Thank you to everyone who took part in our recent Community Scorecard. The results show that the Shire continues to be a great place to live, with a liveability score of 80 out of 100 – six points above the industry average. How our community view Council has also improved, with governance up 7% since 2024 and six points above average

We've seen strong performance across key services. Emergency response scored 68, placing us above the industry high and reflecting the community's confidence in our response capability. Library services also continue to perform well, highlighting their important role in our community. These results reinforce how much our residents value the Hills lifestyle, particularly our natural environment, public spaces and sense of connection.

The Scorecard also highlights areas for improvement, including waste management, roads and footpaths. In response, Council is focused on the planning and delivery of practical improvements including a review of our waste services. Through FOGO and supporting programs like nappy bin rebates, over 5,000 tonnes of waste have been diverted from landfill, with contamination rates among the lowest in the region. All this work is grounded in what we hear from you so thank you for your feedback.

As ANZAC Day approaches, I encourage all to attend one of the many local services in the Shire of Mundaring and honour the sacrifice of our soldiers. *Lest We Forget.*

**Paige McNeil**  
Shire President



**25** April

### ANZAC Day services

Various locations across the Shire

The community is invited to attend an ANZAC Day service or commemorative event in the Shire to honour those who served.



Scan QR code or visit  
[mundaring.wa.gov.au/news](http://mundaring.wa.gov.au/news)

## Building a better Shire

The Shire is focused on enhancing community spaces, improving infrastructure and strengthening resilience for the future. Here's a snapshot of some of the key projects currently underway across the Shire:



### Fraser Park Playground set for exciting upgrade

Families in Greenmount will soon enjoy an upgraded Fraser Park playground, with new equipment and features to support active, imaginative and inclusive play for all ages and abilities. The Shire is currently in the planning and community engagement phase. Visit the project page to learn more and help shape the final design.

### Brooking Rd Extension & Falls Rd Bridge

Planning is underway for the Brooking Road Extension and Falls Road Bridge Replacement to improve safety and traffic flow in Parkerville. The project includes a new bridge, safer intersections and replacement of the ageing Falls Road timber bridge, with community consultation ongoing and completion expected by 2027.



### Backup generator boosts resilience at Mundaring Arena

A new 337kVA backup generator has been installed at Mundaring Arena. The \$182,000 investment supports the Arena's role as an evacuation centre and ensures essential services can continue during power outages.

## Stay up to date with the Shire's new Road Report

The interactive map provides real time information on road works, closures and disruptions across the Shire.



**02** May

### Saving power in your home

1pm • Shire of Mundaring

In this interactive workshop, Ecoburbia's Shani and Tim explain solar passive design basics to help cut gas and electricity costs.



Scan QR code or visit  
[mundaring.wa.gov.au/events](http://mundaring.wa.gov.au/events)

**23** May

### Get Your Winter Wardrobe Ready

1:30pm • Boya Community Centre

Join us for an eco-friendly fashion event in the Hills, starting with an interactive workshop and followed by a Care to Rewear clothes swap.



Scan QR code or visit  
[mundaring.wa.gov.au/events](http://mundaring.wa.gov.au/events)

**CONNECT WITH US**  
[@shireofmundaring](https://www.facebook.com/shireofmundaring)



(08) 9290 6666  
[shire@mundaring.wa.gov.au](mailto:shire@mundaring.wa.gov.au)

[mundaring.wa.gov.au](http://mundaring.wa.gov.au)

# ARTS ENTERTAINMENT

## Kalamunda exhibition exploring sustainability and renewed purpose

KALAMUNDA'S Zig Zag Gallery has debuted an exploration of sustainability through the arrival of 'Reclaimed Fragments and Friends', a collaborative exhibition by local artists Skye Riseley and Karen Parry.

The collection represents a culmination of a creative partnership that began when the two artists first connected as fellow art teachers in 2011, sparking a friendship built on support and shared artistic experiences.

Central to the exhibition is a deep-seated passion for the themes of renewal and transformation, with both women utilising their artistic mediums to breathe new life into materials that were once considered forgotten waste.

The displayed work spans a range of mediums including tactile textiles and complex mixed media art pieces that sit alongside meticulously detailed coloured pencil drawings, all of which highlight hidden value that is often overlooked.

By focusing their attention on objects that have been previously discarded, repurposed, or broken, Riseley and Parry challenge the audience to find unexpected beauty in the mundane and to rethink our modern relationship with consumption and disposal.

Every piece within the gallery tells a moving story of second chances, inviting viewers to slow down and appreciate the intricate textures and histories embedded in the fragments.

Running until May 3 at 50 Railway Road, Kalamunda, the exhibition invites the community to have a direct look at the technical process of converting discarded objects into a professional art collection.

Admission to the gallery is free and visitors can attend between 9am and 4pm on weekdays, or from 10am to 4pm on weekends.



An assortment of textile waste reconstructed into an artistic piece viewable at the exhibition.



Karen Parry (left) and Sky Riseley (right) at the opening of their collaborative exhibition. Picture: Zig Zag Gallery

## New exhibition celebrates Mundaring's past

THE Mundaring District Museum has unveiled a new exhibition at the Mundaring Visitor Centre celebrating the rich history of the shire.

Among the featured sections are convicts, bushrangers and policemen, old Mundaring primary school, and facing the storm: the war years in Mundaring, offering insight into the people and events that shaped the hills community.

The exhibition also highlights engineering and health history through displays on Trains and Tunnels, Mundaring Weir & the Golden Pipeline, and the former Wooroloo Sanatorium.

Organisers said the exhibition is designed not only to inform but also to involve the community, with one display

encouraging visitors to help solve a mystery.

A section of timber posts and railing marked with stamped latitude and longitude coordinates has been placed on display, with museum staff asking visitors to share their ideas about its original purpose.

The exhibition is part of an ongoing effort to showcase different aspects of Mundaring's history throughout the year, with displays set to be refreshed regularly to include new topics and stories.

Visitors are encouraged to contribute ideas for future themes by completing a feedback form or signing the visitors' book during their visit.

The Mundaring and Hills Historical

Society is also calling for community involvement beyond the exhibition, seeking volunteers to assist with research, scanning, and transcribing historical materials.

Residents with objects, memorabilia, or photographs connected to the Shire of Mundaring are invited to consider donating or sharing them for preservation.

The society operates from the old Mundaring Station Master's house at 3060 Jacoby Street, where visitors can learn more about its broader work beyond the museum displays.

Mundaring District Museum is open daily in line with the Mundaring Visitor's Centre, from 9am to 4pm on weekdays and Saturdays, and 10am to 2.30pm on Sundays and some public holidays.



The Mundaring District Museum is hosting a new exhibition showcasing the history of the shire.

## ENTERTAINMENT & GIG GUIDE

### Your local Gig Guide

**Fri April 24**

**Woodbridge Hotel**  
Touché  
From 8pm, Free  
50 East St, Guildford

**Sunday April. 26 cont.**

**Chidlow Tavern**  
The Carnabies  
12.30pm-3.30pm, Free  
4 Thomas St, Chidlow

**Parkerville Tavern**  
Damo from  
Dr. Elephant solo  
From 6pm, Free  
6 Owen Road  
Parkerville

**Lyric's Bar**  
Waterhouse  
album launch  
From 6pm, Free  
22 Lyric Lane  
Maylands

**Mahogany Inn & Distillery**  
Ben Graham  
6pm-9pm, Free  
4260 Great Eastern Hwy  
Mahogany Creek

**Mahogany Inn & Distillery**  
Coastal Drift Trio  
4pm-7pm, Free  
4260 Great Eastern Hwy  
Mahogany Creek

**Lyric's Bar**  
Furniture  
From 7pm, Free  
22 Lyric Lane  
Maylands

**Parkerville Tavern**  
Slim Jim & PHATTS Inc  
From 3pm, Free  
6 Owen Road

**Sat April 25**

**Settlers House York**  
Graeme Fisher  
12pm-3pm, Free  
125 Avon Terrace, York

**Mon April 27**

**Settlers House York**  
Nick Childs  
12pm-3pm, Free  
125 Avon Terrace York

**Parkerville Tavern**  
Leslie Hinton  
Entertainment  
From 6pm, Free  
6 Owen Road  
Parkerville

**Parkerville Tavern**  
Andrew Winton  
From 1pm, Free  
6 Owen Road  
Parkerville

**Tues April 28**

**Chidlow Tavern**  
Jasmine Evans  
12pm-3pm, Free  
4 Thomas St Chidlow

**Mahogany Inn & Distillery**  
Smooth Groove  
6pm-8.30pm, Free  
4260 Great Eastern Hwy  
Mahogany Creek

**Lyric's Bar**  
Klang  
From 7pm, Free  
22 Lyric Lane  
Maylands

**Wed April 29**

**Woodbridge Hotel**  
Powerplay  
From 8pm, Free  
50 East St, Guildford

**Chidlow Tavern**  
Muso Jam Night  
7.30pm till late, Free  
4 Thomas St, Chidlow

**Mahogany Inn & Distillery**  
Rachelle Coda and Jack Lowrie  
6pm-9pm, Free  
4260 Great Eastern Hwy  
Mahogany Creek

**Mahogany Inn & Distillery**  
House Grooves  
Presented by Fenton Wilde  
6pm-9pm, Free  
4260 Great Eastern Hwy  
Mahogany Creek

**Thur April 30**

**Sun April 26**

**Settlers House York**  
The Jukes of York  
12pm-3pm, Free  
125 Avon Terrace, York

**Mahogany Inn & Distillery**  
Neil Adams  
7-9pm, Free  
4260 Great Eastern Hwy  
Mahogany Creek

**Woodbridge Hotel**  
Stu McKay  
From 3pm, Free  
50 East St, Guildford

**Woodbridge Hotel**  
The Pointy Heads  
From 6pm, Free  
50 East St Guildford

## Promote your event



SCAN ME  
ENTERTAINMENT & GIG GUIDE

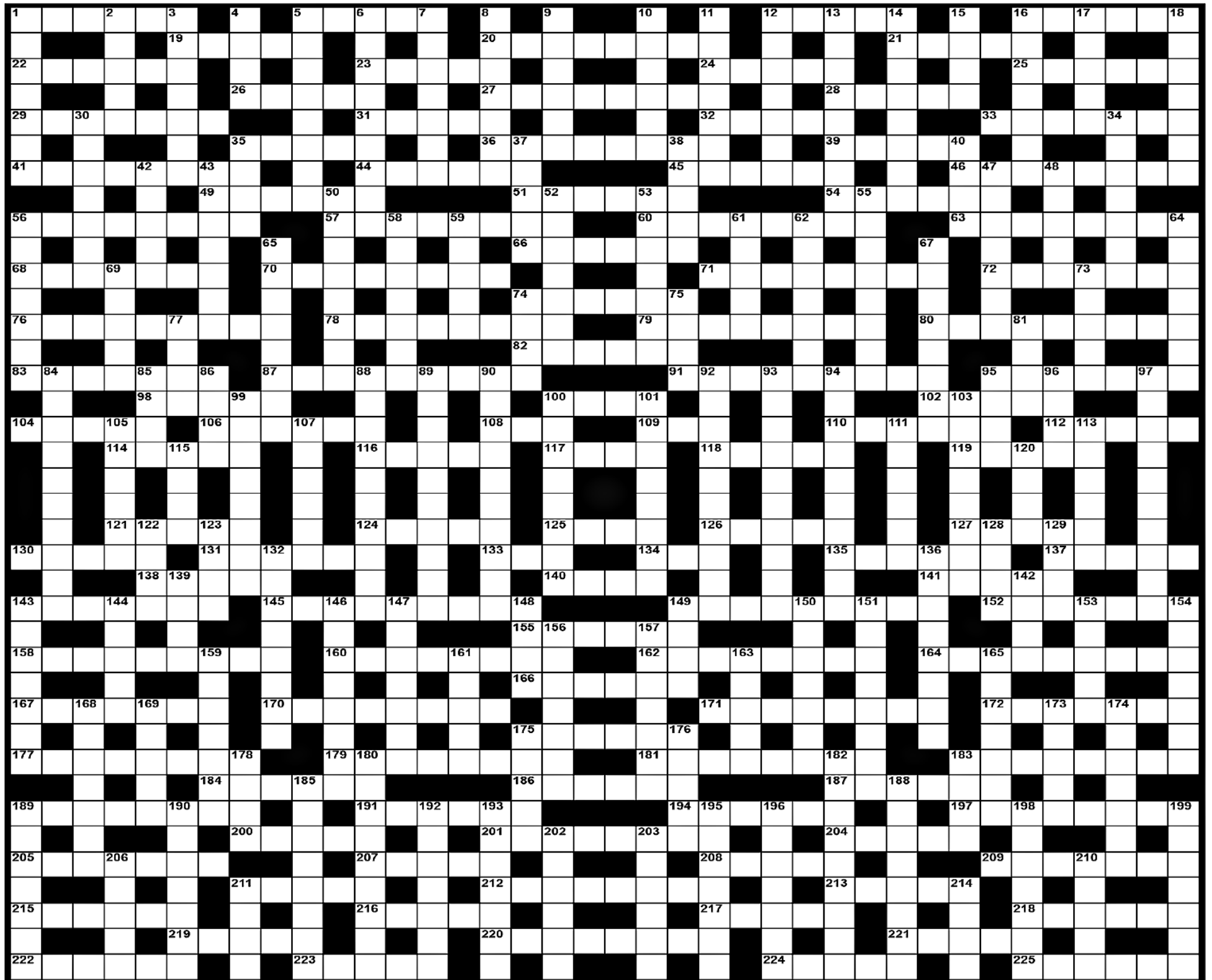
Contact Peter for more information  
on 9374 6605 or peter.lewis@echo-news.com  
[www.echonepaper.com.au](http://www.echonepaper.com.au)

**ECHO NEWS**



# Mind Boggler Crossword

1265



**ACROSS**

- 1 Cuddled
- 5 Gem surface
- 12 Moors boat
- 16 Spoke loudly to
- 19 Mix up
- 20 Removed cargo
- 21 Portable light
- 22 Reach destination
- 23 Clever
- 24 One eating a meal
- 25 Slumbering
- 26 Spur wheel
- 27 Strange
- 28 Car competition
- 29 Different
- 31 Star sign
- 32 Leak slowly
- 33 Adhesive label
- 35 Short in speech
- 36 Corpses
- 39 Outer coverings
- 41 Causes annoyance
- 44 Wanted
- 45 Agreement
- 46 Hanging ornament
- 49 A pampered canine
- 51 Stable attendant
- 54 Last mentioned one
- 56 One idly chatting
- 57 Put in again
- 60 Relaxation times (4,4)
- 63 Deteriorating
- 66 Religious time
- 68 Makes fun of
- 70 Electrical resistor
- 71 Most weighty
- 72 Locks of hair
- 74 Radio interference
- 76 Street-light supports
- 78 Odd in speech
- 79 Ragged
- 80 Lasting ability
- 82 Cleared
- 83 Stiffly formal

- 87 Deviated from subject
- 91 Hung
- 95 Is not the same
- 98 Private remark
- 100 Waistband
- 102 Make happy
- 104 Stone monument
- 106 Decorations
- 108 Touch lightly
- 109 Donkey
- 110 Make angry
- 112 Checks print copy
- 114 Send from body
- 116 First class
- 117 A den
- 118 Carried
- 119 Type of fish
- 121 Small bird's chirp
- 124 Colder
- 125 Become weary
- 126 Bore a hole
- 127 Metal fasteners
- 130 Thinner
- 131 Insurgents
- 133 Anger
- 134 Move on ice
- 135 Harsh money-lender
- 137 Weird
- 138 Home
- 140 Massages
- 141 Papal law
- 143 Records again (4,4)
- 145 Stayed alive
- 149 Parts of ova
- 152 Removing dust
- 155 More simple
- 158 A singer
- 160 Gave provisions
- 162 Having faith in
- 164 Laziness
- 166 A brain disease
- 167 One with refined taste
- 170 Parts of ears
- 171 A set of bells

- 172 Sweet pancake
- 175 Goddess of wisdom
- 177 Lucky charm
- 179 Musically sad
- 181 Normal amounts
- 183 Confuse
- 184 Thief
- 186 Three times
- 187 Sorrow
- 189 Top-water time (4,4)
- 191 Scan carefully
- 194 Silly person (coll)
- 197 Star in print
- 200 Graceful moving girl
- 201 Forecasts
- 204 Outside part
- 205 Used new lining
- 207 Legal defence
- 208 Ordinary
- 209 Sunshade
- 211 Religious rule
- 212 Call as stupid
- 213 Open to view
- 215 Trial
- 216 Sports area
- 217 Deep gulch (US)
- 218 Alter
- 219 Slack
- 220 Strongest
- 221 Musical beginning
- 222 Coarsely
- 223 Resided
- 224 Happen
- 225 Ointments

**DOWN**

- 1 Saved miserly
- 2 Complain (coll)
- 3 Kitchen cabinet
- 4 Finished
- 5 Bloomed
- 6 Dare

- 7 Shiver
- 8 Be faster than
- 9 Cut in strips
- 10 Like to see
- 11 Place of residence
- 12 False teeth
- 13 Rightly
- 14 Staunch
- 15 Weight system
- 16 Chide
- 17 A flower
- 18 Leaves
- 30 One calling
- 34 Dogs sheds
- 35 Old ruler
- 37 Love
- 38 More unusual
- 40 Hurried
- 42 Overturn
- 43 Makes sacred
- 47 Built
- 48 Hang loosely
- 50 Commanding
- 52 Frighten
- 53 A religious loner
- 55 Scaled
- 56 Nodes
- 58 Close to the beach
- 59 Hindu religious teacher
- 61 Look after
- 62 Not favourable
- 64 Pendant ornaments
- 65 Chaired meeting
- 67 Was present
- 69 Force forward
- 73 A rod
- 74 Gritty stone
- 75 Nasty people
- 77 Poems
- 81 Single part
- 84 Bouncing platform
- 85 Strong taste

- 86 Darkens
- 88 Reserve soldiers
- 89 Youths
- 90 Business
- 92 Honourable
- 93 Separated portions
- 94 A pen-name (Fr) (3,2,5)
- 95 Unpleasantly humid
- 96 Body parts
- 97 A withdrawal
- 99 Discovered
- 100 Fragment of wood
- 101 Density
- 103 Abated
- 105 Prove wrong
- 107 Stirring
- 111 A mental illusion (Fr) (4,2)
- 113 Prevent detonation
- 115 Sea eagle
- 120 Against
- 122 Enclose
- 123 God of love
- 128 Very dry
- 129 Allows
- 132 Given as gift
- 136 Drawing back
- 139 Greek letter
- 142 Nicks
- 143 Most opulent
- 144 A caper
- 146 Standing over
- 147 Endanger
- 148 Antlered animal
- 149 Goes wrong
- 150 Greeting
- 151 Make lawful
- 153 Name
- 154 More famous

- 156 Electrical component
- 157 Everlasting
- 159 To sheltered side
- 161 Type of monkey
- 163 Set of steps
- 165 Groups of seven
- 168 Against the law
- 169 Make angry
- 173 A cutter
- 174 Scottish boys
- 175 A flower
- 176 Turn aside
- 178 Votes against
- 180 Place of parentless ones
- 182 About study of workers

- 183 Carry
- 185 Evenly placed
- 188 A collector
- 189 A port
- 190 Perfectly
- 192 Ornate dress
- 193 Coils
- 195 Appearances
- 196 Boasting
- 198 Comas
- 199 Murderers
- 202 Most senior
- 203 Troughs for conveyance
- 206 Girl's name
- 210 Have effect
- 211 A lump
- 214 Travel around

**Crossword Solution 1264 from 17 April, 2026**

# ECHO Trades & Services

**9374 6666**  
classifieds@echo-news.com  
www.echonepaper.com.au

## Bobcats

**BOBCAT - TRUCK EXCAVATOR ROCKBREAKER**

- Bobcat works, Earthworks & Truck Hire
- Driveways - Removals / Prep / Construct
- Excavation / Trenches / Drainage / Soakwells
- Shed & Tank Pads / Rockbreaking & more ...

Reliable Service **DAVE 0417 096 614**  
DW Cartage & Earthworks

**MIDLAND BOBCAT HIRE**  
BOBCATS, 8 & 12 TON TIPPERS, MINI EXCAVATORS

Free no obligation quotes and advice

**Russell & Lynn Edwards**  
Owner/Operator

**Russell: 0417 957 597**  
russlynn4@bigpond.com

## Brickpaving

**LIMESTONE BRICKLAYING BRICKPAVING**

Retaining & Feature Walls  
Garden Beds etc

Over 25 year experience

**Ross Lucassen 9295 2837**

## Carpentry

**CARPENTER/CABINET MAKER**

Sash Window Repairs / Renovations, Kitchens, Laundries, Robes & Vanities made and fitted. Doors, Frames & Architraves. Skirting & Shelving. 40 years experience.

**NO JOB TOO SMALL. Call Terry 0401 743 027 / 9295 0797**  
telcocarpentry@bigpond.com

**MORGAN CARPENTRY & MAINTENANCE SERVICES**

ALL ASPECTS OF CARPENTRY & MAINTENANCE WORK

- 15yrs commercial & residential experience • Insured
- Fully qualified, professional & reliable • No call out fee
- Full police clearance • Pensioners discount

Call Kevin **0450 538 596**  
www.morgancarpentry.com.au e:kdd.morgan@hotmail.com

**Carpentry • Joinery • Cabinetmaking and Home Maintenance Services**

- Doors • Decks • Skirting • Sash Windows
- Robes • Kitchen Installations
- Flatpacks • Pergolas • Furniture Repairs

Pensioners Discount Fully Qualified  
Free Quote Call Mal **0400 250 761**

## Ceilings

**CA INSTALLATIONS**

- Ceilings & Walls • All Facets of Ceiling Work
- Domestic & Commercial • Office Partitioning

All Reno Work Local and Loyal  
**0409 953 369**

**CEILING & WALL RESTORATION**

ALL SMALL JOBS  
ALL REPAIRS & NEW ADDITIONS  
23 YEARS EXPERIENCE

**9295 2041 OR 0402 270 688**

## Concrete

**SUNJICH'S CONCRETE**

- Bobcat - Truck and Compaction
- From Prep to Completion

**FREE Quotes All Areas**  
Call Zeljko **0417 902 301**

**TIGER CONCRETE**

FREE QUOTES • NO MESS NO FUSS  
Quality work, all types of concreting

**Bobcat and Truck**  
**Mike 0407 989 927**

**B.C. CONCRETE DESIGN**

Cracked Pea Gravel/Exposed Aggregate  
Crossovers • Shed Floors • Drives  
House Extensions • Patios

**Bobcat & Truck**  
Call Anytime **0457 611 348**

## Electrical

**Mrs Finit!**

Female Electrical Contractor  
Free Quotes & No Call Out Fees

TV / ANTENNAS - LIGHTS - POWER POINTS  
SAFETY SWITCHES / RCD'S - SMOKE DETECTORS  
REPAIR & MAINTENANCE - HOT WATER SYSTEMS

Seniors / Pensioners / HCC Discounts  
**MARDI GLADWELL 0430 035 345**

**Andrews Electrical Systems Pty Ltd**

Established 25 years • High Quality Guaranteed

Residential ✓ Electrical Installations  
Commercial ✓ Electrical Maintenance  
Industrial ✓ Air Conditioning  
✓ Telephone and TV  
✓ CCTV and Data

Call Andrew **0420 956 432**  
Email: andrewsesperth@gmail.com

## Gardening

**FULL-BLOWN Garden Maintenance**

All Areas

- ✓ Rubbish Removal
- ✓ Mulching
- ✓ Lawn Mowing
- ✓ Planting ✓ Weeding
- ✓ Pruning ✓ Hedging
- ✓ Yard clean ups
- ✓ Ride on mowing
- ✓ Spraying
- ✓ Bush fire ready clean ups

**FREE QUOTES**

**Damien 0431 011 369**  
www.full-blowngarden.com

## Gutter Cleaning

**Bobtail Gardens Gutter Cleaning**

Gutter Vac Services

- Fully insured, registered business
- Fully self contained vac truck
- All waste removed from your property
- Obligation free quotes, Senior discounts

Phone Phil **0429 179 577**

## Handyman

- Fencing • Gutter Cleaning • Shelving
- Furniture Repairs • Painting • Tiling • Paving
- Carpentry • Property Maintenance
- High Pressure Cleaning

Almost anything - just ask!

Pensioners Discount Free Quote  
Mal **0400 250 761**

## Limestone

**Michael's Stonework**

Limestone & Coffee Rock

Small Retaining Walls, Steps, Pillars, Stone Pitching, Garden Beds

For a FREE quote & reliable service call:  
**0427 190 273**

## Pest Control

**Mal's Pest & Weed Services**

Free Quotes

- Servicing the Hills and surround for 30 years
- Specialising in termite treatments & inspections

Call Sean **0417 905 708**

## Plastering

**EASTERN HILLS PLASTERING**

ABN 69 373 874 693

All Aspects of Plastering - Concrete Skim  
Coating - Acrylic Texture Finish - Renovations

30 YEARS EXPERIENCE FREE QUOTES  
TONY **0406 675 211**  
easternhillspastering@outlook.com

**Looking for a tradie?**

Now you can find a tradie in the paper AND on our website ANYTIME GO TO:

**www.echonepaper.com.au**

## Plumbing

**Hi I'm Local In Your Area Hot Water Expert**

- ✓ Senior Discounts
- ✓ Upfront Pricing
- ✓ Fast Plumber
- ✓ Drains, Taps, Toilets

**\$0 Call Out\***

**Plumbing Emergencies 24/7**  
**6244 3226**

\*conditions apply PL9956

## The Tap Doctor

FOR ALL PLUMBING & GAS

- Taps • Burst Pipes
- Toilets • Leak Detection
- Hot Water Systems • Blocked Drains

Call Today **1300 655 827**

Our Service Will Amaze You  
PL6703 www.thetapdoctor.com GF10208

## LOCAL PLUMBER

Same Day Service

Blocked Drain, Taps, Toilets

Burst Pipes, Hot Water

\*conditions apply

Same Day Emergencies 2-4hrs

**9468 2581**

NO CALL OUT\* + SENIOR DISCOUNT

Your Best Local Plumber!

**Local Plumber Same Day Service Hot Water Expert**

- Upfront Prices
- Pensioners Save
- Drains, Taps, Toilets
- Burst Pipes, Gas

Emergency Plumbing 24hrs  
**6118 6368**

PL9956 \*conditions apply

## Roofing

**AMC ROOFING**

Specialising in All Tiled Roofing  
New Roofs  
Maintenance & Repairs

Free Quotes - Aaron Carter  
Mob: **0417 930 817**

**RIDGE CAP KING**

TILED ROOF RESTORATIONS  
**0447 234 603**

Call Kieren today for a free quote  
admin@ridgecapking.com.au

## Roofing

**AR Specialist Roofing**

Solutions for all your roofing needs including

- roof restoration • gutters
- leaks • downpipes • sheeting
- custom flashings • roof cleaning
- PATIO BUILDING

Call Andrew  
**0408 192 021**  
arspecialistroofing@gmail.com

**ROOF TILE REPAIRS**

For all your Roof Tile Repairs

Contact David for a free quote on  
**0413 240 203 or 9255 4003**

Specialising in: Leak Repairs • Gutter Clean  
• Tiling • Re-ridging • Re-pointing

**YOUR LOCAL ROOF SPECIALIST**

PROFESSIONAL SERVICE & REPAIRS

- METAL ROOFING | NEW AND REPLACEMENT
- GUTTERS & DOWNPIPES | NEW AND REPLACEMENT
- ROOF COATING AND RESTORATIONS
- MAINTENANCE
- LEAKS AND ROOF REPORTS

CONTACT PETE FOR A FREE QUOTE  
**9274 7663**

sales@prowestroofing.com.au  
prowestroofing.com.au

## Tree Services

Helping people manage trees for over 30 years

**CPD TREES**

ARBORISTS

Michael Byrne Dip. Arboriculture  
**0411 750 342**  
www.cpdtrees.com.au  
arborist@cpdtrees.com.au

TLC Tree Services has merged with

**Payne's Tree Services**

FREE QUOTES AND ADVICE

- MULCHING • LAND CLEARING
- STUMP GRINDING
- TREE LOPPING

Call Clint on **0455 132 014**  
paynestreeservices.com.au

**HILLS TREE SOLUTIONS**

For all your Tree Lopping and Stumpgrinding Needs

- Locally owned & operated • Call 24/7
- Fully Insured • Cheapest Prices Guaranteed
- Horizon Power Accredited • Servicing All Areas

CALL **9295 6511 OR 0414 438 610**

**"Lets keep local people in work"**

Support your local Business

**ECHO NEWS**

**www.echonepaper.com.au**

## Read between the lines



### by Pastor Ian Kirk The Ultimate Sacrifice

This weekend communities around Australia come together to commemorate Anzac Day. We come to remember the sacrifice and service of our soldiers as they fought against tyrannical powers to secure our freedom.

Anzac Day is particularly connected to World War I, when on the 25th April 1915, Australian and allied soldiers landed at Anzac Cove on the Gallipoli Peninsula. For the 16,000 Australians and New Zealanders who landed on that first day, it was absolutely horrendous. By that evening, 2,000 of them had been killed or wounded.

My wife's grandpop, Walter Poulter, was there on that first day. He was part of the 3rd field ambulance Corp. It was his task to care for the wounded and to make sure no soldier died alone. He saw many make the ultimate sacrifice.

At Anzac Day services, often these words are read out: "greater love has no one than this, than one lay down his life for his friends". They were first spoken by Jesus, as recorded in John 15:13 - the night before His crucifixion. He wanted us to understand the great love behind sacrificing yourself for others.

Jesus Himself sacrificed His life for us. He allowed evil men to take Him and crucify Him, so that He could pay the penalty for our sins and enable us to be forgiven and to be freed from judgment - if we would believe in Him. It's the ultimate sacrifice! He did it for all of us - what love!

## ECHO NEWS

### Indemnity and Warranty

ECHO NEWSPAPER  
CONDITIONS OF ACCEPTANCE

When an individual or other legal entity ("the Customer") requests Echo Newspaper ("Echo") to place an advertisement in this Newspaper, they agree to be bound by the following terms and conditions:

1. Echo, at its sole discretion, may decline to publish any advertisement requested by a Customer. If Echo decides not to publish a particular advertisement, there is no obligation on Echo to disclose the reasons for its decision, and Echo will not be liable for any loss or damage occasioned to the Customer as a result of the decision.
2. Echo will not be liable for any loss or damage caused to a Customer as a result of delay or as a result of Echo failing to place a requested advertisement or publishing an advertisement containing an error or omission.
3. Echo may, at its sole discretion, decide to refund a Customer a portion of the cost of the advertisement if it forms the view that the error was not attributable to the Customer and the Customer notifies Echo of the error or omission before 5.00pm on the day the advertisement first appears in the Newspaper.
4. Complaints concerning the accuracy of any invoice must be notified to Echo within 30 days from the end of the month in which the advertisement was published, after which time the Customer forfeits any rights it may have had to challenge the invoices.
5. The Customer warrants that publication of the requested advertisement/s will not contravene any laws, whether statutory, equitable or otherwise, and agrees to wholly indemnify Echo (and its employees and agents) against all expenses, loss and damage arising directly or indirectly from the publication of the advertisement/s.

# ECHO Classifieds

**9374 6666**  
 classifieds@echo-news.com  
 www.echonepaper.com.au

**Bookkeeping**  
**BLISS BOOKKEEPING**  
 Stress-free Bookkeeping, BAS and Payroll solutions. Simple, clear and reliable support for your business. Ready for peace of mind? Book your free 20-min consult: **0413 794 460**  
 info@blissbookkeeping.com.au  
 www.blissbookkeeping.com.au

**Custom Video & DVD Solutions**  
**Video Transfers to USB** starting from \$45 - 6393 7298.

**Firewood**  
**Get your firewood now.** Dry split & delivered 4 x 7 trailer load \$255.00. 0452 541 069.

**Hobby Farm Services**  
**Slashing, mowing, wool buying, firebreaks & property cleanups.** Ian 0458 510 048.

**Roofing**  
**Repair all leaks.** Roof painting & coatings. Call Markus - 0433 958 025.

**Ceiling Repairs**  
**New gyprock walls and ceilings.** Repair old ceilings. Professional tradesman. Peter 0400 993 387.

**Drainage**  
**SEPTIC TANKS PUMPED.** Blocked drains. Septic tanks repaired. Leach drains renewed and repaired. Storm water drains. Gas/Elec hot water installs. Same day. Pensioner discount. Call Trevor 0419 773 111.

**Gardening**  
**Ian Mac's whipper snipping, chain sawing and weeding.** Small tree lopping jobs. 0426 211 137.

**Painting**  
**Painting & Property Maintenance.** 0477 660 703. Local.

**Roof Repairs**  
**Roof leaks, gutter cleaning, solar panel cleaning, roof cleaning.** 0421 455 546.

**Cleaning**  
**For all aspects of domestic tasking** contact Ally - 0426 543 733.

**Electrician**  
**LITL Electrical**  
 All types of electrical work & air conditioning.  
**Jeff Overton**  
 0483 858 603.  
 EC14844

**Gutter Cleaning**  
**Gutter cleaning & solar panel cleaning.** Jason 0421 455 546.

**For all your painting needs.** Call Markus today - 0433 958 025.  
**Steve Gregory painting service.** Mobile 0417 926 027. Reg # 5098.

**Solar Services**  
**Solar Panel Cleaning with Anti Mould & Solar Wax Treatment.** 0421 455 546.



**Handyman**  
**ALL YOUR NEEDS** - external / internal painting & roof painting, high pressure cleaning & odd jobs & gyprock repairs - call Markus today - 0433 958 025.

**Plumbing**  
**MASTERS PLUMBINGAS**  
 All Plumbing & Gas work, Blockages, Hot water units, Leaks, Renovations, Burst pipes. 24/7 Emergency Service. NO CALL OUT FEE  
 David: 0416 644 191.  
 PL-9554 GF-011284



**Wanted to Buy**  
**MEDALS and Militaria** bought by genuine local collector top prices paid 0407 982 215.

**Employment**



The Echo Newspaper is looking to fill the following position

**JUNIOR ADVERTISING SALESPERSON**

If you enjoy meeting new people and have an outgoing personality, then this is the job for you

We are a small, privately owned and independent newspaper looking for an energetic and vibrant person to join our team.

The successful applicant will have:

- A current "C" class drivers licence and reliable vehicle.
- A smart appearance with a strong commitment to customer service and the ability to develop and implement successful sales strategies, including digital, by building and maintaining long lasting client relationships.
- Strong negotiation verbal and written skills with excellent presentation and a professional phone manner is a must.

This position is Monday-Friday and offers a salary package, including a commission structure with a weekly car allowance.

Please email your resume with a cover letter to:  
**General Manager / Editor Peter Lewis**  
**E: peter.lewis@echo-news.com**  
 All applications will be treated with the strictest confidence.

**WILLIS BUILDING & MAINTENANCE SERVICE.** Specialising in all house maintenance, pergolas, decking, verandas, painting and carpentry. 0487 093 355.



**Regrouting**  
**Bathroom Regrouting.** Call Andrew 0413 158 763.

**Window Cleaning**  
**Clean-View Window Cleaning.** Domestic or commercial. 0497 111 676.

**Tatania's Window Cleaning.** Tracks. Frames & Fly screens. 0467 282 127.



**Public Notice**



**Have your say**  
**Draft Amendment No. 1 to the North Ellenbrook (East) District Structure Plan**

The Western Australian Planning Commission is seeking public comment on the Draft Amendment No. 1 to the North Ellenbrook (East) District Structure Plan (DSP). The draft Amendment identifies additional potential conservation areas and strategic transport network upgrades to provide enhanced guidance for local structure plans.

The draft Amendment can be viewed at [haveyoursay.dph.wa.gov.au/neeastdspamend1](http://haveyoursay.dph.wa.gov.au/neeastdspamend1) or in person, by appointment, at the Department of Planning, Lands and Heritage, Level 2, 140 William Street, Perth. Contact [neeastdsp@dph.wa.gov.au](mailto:neeastdsp@dph.wa.gov.au) or 6551 8002 for an appointment.

Submissions can be made online or posted to: Department of Planning, Lands and Heritage, Metro North East Team, Locked Bag 2506, Perth WA 6001.

Submissions close **8 June 2026**. Late submissions may not be accepted.

DPLH\_30097

**Mundaring canopy program is ceased for PSHB control**

From p3.  
 Anyone applying for the rebate must also ensure a replacement tree's canopy will reach at least 3m tall when mature.

Residents looking to claim the rebate must purchase an eligible replacement tree from a commercial Western Australian nursery or garden centre, with all eligible purchases made in one transaction. The trees do not need to be a native species.

They must also plant the tree on their property and claim the rebate through the ServiceWA app or paper claim form.

The rebate program that replaced the Urban Canopy Grant Program was launched on 28 July 2025 and will remain open until late 2028.

**New Midland women's refuge centre opening**

From p4.  
 Prevention of Family and Domestic Violence Minister Jessica Stojkovski affirmed Mr Catania's comments about Indigo Junction's long track history of support and said the new opening was an opportunity to rebuild.

"The opening of the Bindi Bindi Mia Refuge supports the Cook Labor Government's commitment to supporting victim-survivors to not only escape violence, but also to rebuild their lives and independence by providing a safe place with well wraparound supports at hand," she said.

Indigo Junction continues to invest in new buildings and support centres for women and children escaping family and domestic violence.

In 2021, Indigo Junction secured \$5.5 million through the Social Housing Economic Recovery Package which is now the Social Housing Grants Program.

This funded the refurbishment of eight homes, three units and the Koolkuna Refuge, improving safety, accessibility and long-term sustainability.

All 12 properties have now been completed and re-tenanted, increasing the availability of safe, dignified housing.

A new Koolkuna Healing Hub has been proposed, and plans are underway for a new refuge combining independent living units with integrated, on-site support.

Development approval has been secured, with funding applications in progress.

Construction is aimed to begin in mid-2026.

**Quarantine area declared to stop Qld fruit fly spread**

From p5.  
 "Working together - industry, government and community - gives us the best chance of eradicating this pest as quickly as possible."

Qfly is a significant pest of horticulture and home gardens that impacts more than 300 types of fruit, including fruiting vegetables such as tomato, chilli and capsicum.

The community is encouraged to look for and report suspect Qfly, which are six to eight millimetres long, with a red-brownish torso and yellow patches, dark brown abdomen and clear wings.

Reports of suspected Qfly, including maggots in fruit, can be made via the MyPestGuide Reporter app or DPIRD's Pest and Disease Information Service [padis@dpird.wa.gov.au](mailto:padis@dpird.wa.gov.au)

**ECHO Notice Board**

A free service for non-profit organisations  
**9374 6666**  
 editorial@echo-news.com

**Upcoming Events**

- **Kalamunda Youth Swing Band** gives young musicians the opportunity to rehearse and play in a band. Rehearsals are Monday afternoon during school term. For more information call musical director Leah on 0432 973 395.
- **The Ellenbrook Friendship Group** meets each Wednesday at the Community Centre, 27 Maffina Parade, Ellenbrook from 1pm to 4pm. All welcome to make new friends or just have a chat. Enjoy indoor

- bowls, afternoon tea and the occasional outing. For more information call Sheila on 0402 973 307.
- **The Swan Woodturners Association of WA** meets every Tuesday at 1pm for a 1.30pm start at the Caversham Memorial Hall, 7847 West Swan Road, Caversham for men and women of all ages interested in learning the art of woodturning. Woodturning demonstrations are undertaken each week with demonstrations also displayed on large TV screens. Competitions are held for those members eager to improve their skill level. For more visit wood

- turnerswa.org.au and then go to Swan Woodturners Group or contact the convenor on 0476 178 002.
- **The Gidgegannup Men's Shed** at Ian Stannard Pavilion, Gidgegannup Showgrounds, 2171 Toodyay Road, Gidgegannup is a community-based men's shed providing opportunities for men and women to work on projects of their own, join in shed activities and tasks, or just share time, recreation and fellowship with other members. For more information email [president@gidgegannupmensshed.org.au](mailto:president@gidgegannupmensshed.org.au) or visit [gidgegannupmensshed.org.au](http://gidgegannupmensshed.org.au)

- **Midland Friendly Garden Club** meets at 9.30am on alternate Thursdays at Bruce Douglas Pavillion, Brown Park, Salisbury Road, Swan View. The next meeting will take place on April 30. Our guest speaker will be Grace Thomson from Lakehouse Nursery, a grower of day lilies and irises. For more information call Jenny on 0424 553 002, or Barbara 0482 935 686.
- Noticeboard is for non-profits and community groups advertising free/low cost events/programs. Entries must be emailed to [editorial@echo-news.com](mailto:editorial@echo-news.com) two weeks before the event.**

**Woofers of the week**



Houdini is an 18-month-old ihasa apso. Unfortunately his owner is no longer able to take care of him. Houdini is good with cats and other dogs. His hair grows down to the ground so he will need to be groomed regularly. He is vaccinated, micro-chipped, and sterilised. Contact Bakers Hill Dog Sanctuary on 9574 1438.

# Maida Vale swimmer still making waves at 96

**MAIDA Vale Masters swimming club member Gladys McGough is 96 and setting records as the lone WA swimmer in her age group.**

Competing at a recent two-day Masters swimming meet in Mandurah, Ms McGough set six inaugural state records and one national record.

The event was held at an outdoor 25m pool and brought together swimmers from 26 clubs across the state with competitors across all age groups.

Maida Vale Masters president Andrea Williams said Ms McGough's performance stood out even among strong swimmers.

Ms McGough competed in six individual events and two relays across the weekend, having only returned to training late last year after a two-year break due to illness.

Mrs Williams said while Ms McGough is the only swimmer in her age group competing in the state, there were others her age over east, and she continues to measure herself against national standards.

"There are other swimmers in the eastern states in her age group which is why



Maida Vale Masters swimming club member Gladys McGough recently set a new national record for her age group.

she only went for the one national record," she said.

"But the fact she's back in the water and competing at that level is incredible."

Ms McGough had been an advanced swimmer ever since she got her bronze medallion when she was 27.

She has since kept up the habit for 69 years.

"Every time I get in the water, I set a

new state record," Ms McGough said.

"It's a privilege to be swimming at this level at my age.

"I've had friends I lost to dementia and other illnesses.

"I've had many fantastic opportunities in my life, and I don't take any of it for granted."

Ms McGough said the sport of swimming had given her a fulfilling life so far.

"It was wonderful getting to coach swimmers at the Bayswater Club and years later running into one of my swimmers who had gone into a coaching role of her own," she said.

"Another part of it all was getting involved with the Community Youth Support Scheme.

"We worked with unemployed young people and got kids into jobs.

"Some of them are now swimming coaches and pool managers and gone on to help others love to swim."

Apart from the potential for social good, Ms McGough said what kept her passionate about the sport was the community.

"None of this is possible by myself and I am so fortunate to be surrounded by an incredible

community," she said.

"The people in this sport have been there to support me when I was fit and when I was unwell.

"Having good people will keep you going."

Ms McGough isn't planning on stopping any time soon with a swim in Lake Leschenaultia planned soon.



## Local Real Estate

Residential  
Commercial  
Rural & Country

### Rents stay high across Perth as outer suburbs feel pressure



Rental prices across Perth's eastern suburbs remain high, with many recording weekly rents close to or above \$700. Picture: Daniel Holmes

DANIEL HOLMES

**RENTAL prices across Perth's eastern suburbs remain high with suburbs such as Bullsbrook, Ellenbrook, Forrestfield and Kalamunda all recording weekly rents close to or above \$700 as supply across Perth stays tight.**

New REIWA data shows Perth's median weekly house rent has reached \$730, while unit rents sit at \$700, based on figures updated to April 2026. Rental listings also remain constrained, with 2153 properties available for rent across Perth in the week ending April 19, 4.1 per cent lower than the same time last year.

Bullsbrook recorded the highest median weekly rent among the eastern suburbs compared, sitting at \$760 per week, alongside strong annual rental growth of 16.9 per cent.

REIWA also lists the suburb with 20.5 per cent sales price growth, reflecting continued demand from families moving further from the city.

Ellenbrook's median weekly rent sits at \$710, with annual rental growth of 1.4 per cent. The suburb was also recently ranked among Perth's top-selling areas, showing continued demand for larger family homes in the area.

Forrestfield is also sitting at \$700 per week, while Kalamunda's median weekly rent is \$670.

Kalamunda recorded a slight annual rental decline of 1.5 per cent, but remains one of the more expensive hills suburbs for renters seeking larger homes close to schools and services.

REIWA defines a balanced rental market as having a vacancy rate between 2.5 and 3.5 per cent.

Perth's vacancy rate sat at 2.6 per cent at the start of 2026, suggesting conditions remain relatively tight despite some improvement from the extremely low vacancy rates recorded in previous years.

With weekly rents across multiple eastern suburbs now sitting close to the Perth median, renters continue to face strong competition across the market.



Let us give you a helping hand with your real estate sales.

Contact the  
Echo sales team on  
**9374 6666**  
or email:  
**sales@echo-news.com**



www.echonepaper.com.au

"Personal service,  
professional advice,  
at the right price!"

# Mobility in Style

Sleep well. Live well. Great life.

"Locals  
Supporting  
Locals"

## Adjustable Base with/without Massage

Including Choice of WA Made Genuine Orthopaedic Mattress

### Key Features:

- Head and Foot Raise
- Programmable Memory Positions
- Zero Gravity, Anti Snore
- HiLo@Trendelenburg functions
- One Touch Flat Button & a Torch
- Wireless Remote Control
- Massage with 3 different Modes and a Timer
- Backup Battery
- Adjustable Legs
- 10 Year Warranty + 2 year Electrical Warranty

**20% OFF**  
Selected  
Mattresses and Bases



### Walkers

**20% OFF**  
Selected  
Walkers

### Lift Chairs

Our Lift Chair Recliners provide an ultimate performance in style, designed to be functional and fashionable and part of your home decor.

- Key Features:**
- 2 motors
  - Massage and Heat
  - Fabric or Leather
  - Lumber Support and Headrest
  - 2 year Electrical Warranty



**NOW from \$1099**

### The Pathrider 140XL Scooter

Powerful, precise, & stylish.

#### Key Features:

- Full suspension
- Hydraulic brakes
- LED Lights
- Available in Red, Yellow & Silver



**\$5999**



NDIS Registered Provider

**FREE IN-HOME TRIAL. RENT TRIAL OPTIONS AVAILABLE FOR NDIS CLIENTS.**

FREE DELIVERY PERTH METRO  
FREE INSTALLATION AND REMOVAL  
OF OLD MATTRESS

CALL US ON  
**1300 BARKERS (227 537)**

<https://barkersbeddingandmobility.com.au/>

Follow us on **f**  
Interest Free and  
Lay-by options  
available.  
T&C's Apply.

**OPENING HOURS:**  
Monday-Friday:  
9.30am-5pm

**NEW LOCATION**  
321 Great Eastern Hwy, Midvale  
Opposite Clark Rubber.

# Barkers

Bedding & Mobility

Perth's most trusted brand  
for more than 50 years

**BE A HERO**

**THIS FLU SEASON**

With our flu vaccination service  
**Get your flu shot**

**FREE**



**Book now**

\*Terms, conditions and eligibility criteria applies. Available at participating Discount Drug Stores pharmacies. Fees apply where customers are not eligible for the National Immunisation Program or state-based free flu programs. Speak to our pharmacist for more information. Standard egg based trivalent.

**COVID BOOSTER VACCINATIONS NOW ALSO AVAILABLE IN STORE**

**Greg's Discount  
Drug Store Midland**

**OPEN 7 DAYS A WEEK 8AM-8PM**  
243 Great Eastern Hwy, Midland 6056