

Ellenbrook girls off to Kalgoorlie pageant



P5

Nearly 25% childcare fee increase



P3

Bicycles for Humanity WA celebrates



P8



Mural artists Brianna Dawson and Julie Winmar.

Midland Meals mural

Midland Meals and community members gathered to celebrate the unveiling of a new mural championing kindness and generosity.

P6

TREE AESTHETICS

PERTH HILLS NEWEST SOIL CENTRE

Sand • Soils • Gravels • Mulches • Firewood

THE BEST HEAT COMES FROM WOOD!

Prepare for winter now BEAT THE RUSH!

SCAN HERE TO SHOP NOW!

- Pick-up or delivery options available
- Competitive prices
- Wholesale prices on selected products
- Still Perth Hills preferred Tree Service company

Call us now 9250 6599

Opening Hours
8am-4.30pm Monday-Friday
Lot 10 Talbot Road Hazelmere
(ENTRY OFF MIDLAND ROAD)

office@treeaesthetics.com.au www.treeaesthetics.com.au

Kalamunda Funeral Company

JUST give us a call. No Fuss, No Frills.



Just Cremations

17 Canning Rd, Kalamunda 1800 65 35 95

THROTTLE & GO RENTALS

YOUR ADVENTURE. OUR RIDE.

Explore more for less with our reliable Honda Navi.

ONLY \$49 PER DAY

HIRE THIS BIKE FOR MORE THAN 5 DAYS & GET 10% OFF YOUR BOOKING

- FUEL EFFICIENT: Go further for less.
- EASY TO RIDE: Perfect for all experience levels.
- UNLIMITED FUN: Discover hidden gems at your own pace.
- 125cc PERFORMANCE: Ideal for city commutes & beyond.
- LIGHTWEIGHT: Easy handling & great control.
- FUEL EFFICIENT: Go further for less.

HONDA CB125F \$69 PER DAY*

BOOK YOUR RIDE TODAY! ☎ 0450 910 130 ✉ throttleandgo@gmail.com

10% off valid until 30/06/2026 📍 312 The Broadway Ellenbrook *Terms and conditions apply

PEK CARE Op Shop Midland

PRE-LOVED. GREAT FINDS. BIG IMPACT.

Your local op shop supporting PEK Care Community Services Inc. Every purchase helps care for our community—one find at a time.



We Accept Donations

- Quality pre-loved clothing for all ages
- Shoes, accessories & more
- Affordable & sustainable
- Supporting local community services



OPEN

Monday – Friday
9:00am – 5:00pm
Saturday
9:00am – 5:00pm
Sunday
CLOSED

SHOP MORE. SUPPORT MORE.

Every purchase helps PEK Care continue making a difference in our local community.

VISIT US TODAY!

PEK Care Op Shop Midland
Unit 4 / 245 Great Eastern Highway
Midland WA 6056

PEK CARE INTERNATIONAL 08 6285 5938

FOLLOW US ON FACEBOOK PEK Care Op Shop Midland Thank you for supporting local!

ECHO NEWS

- Guaranteed to reach your target audience.
- Printed weekly edition reaching 35 suburbs with 80 bulk stands.
- Online web presence with 1.2 million hits in the last 12 months.

Weekly email to all subscribers with local news and events.



Read the latest news online



Always in front!

9374 6666

sales@echo-news.com

editorial@echo-news.com

Suite 4, 9 The Avenue, Midland

ECHO In Memoriam



Irene Joyce Warnock.



Ms Warnock in her youth.

Vale Irene Joyce Warnock: Midland Walk of Fame inductee

IRENE Joyce Warnock was a loving family and community member who made an impact in Midland through her contributions to the area's culture and community.

She was born April 1, 1933 and died on March 22 this year at the age of 92.

Ms Warnock was one of the first inductees in the Remember Midland Society's Walk of Fame for the outdoor dance centre she operated with her husband.

Ms Warnock and her husband Keith Warnock established Warnock's Store on Morrison Road in Midland Junction during the early 50s, which is now known as the Midvale general store.

The store was located behind their family home at 58 Ferguson Street and on the side of the store was a venue for young teenagers to enjoy rock and roll music, becoming Midland's very own snake pit.

But long before the dance centre, Ms Warnock had been a part of the working community in Midland.

Ms Warnock's father worked for the army and the family moved into the Swan area, first

settling into a house on Military Road in Bellevue. They then moved to a permanent home on Henry Street, Midland which was where Ms Warnock grew up.

At 15 years old, Ms Warnock started her first job doing dressmaking in Midland.

As a teenager she played netball to which she was very good and had a few trophies to show.

She did well with sport and also played tennis at Swan View for many years and made some lifelong friendships.

Ms Warnock was also known to throw a good dart at the Swan Districts Dart Club also with trophies to show.

Later in life, she was a part of the Midland Senior Citizens probus club and enjoyed her outings with community members.

"She was a great communicator and known as the card queen," her family said.

"(She) always sent cards for birthdays, Easter, Christmas and special milestones."

Ms Warnock is remembered by her family and the community as a gentle, caring and loving lady who made an impact in the lives of her family and the wider Midland community.



A gathering at the Warnock family home on Ferguson Street, in front of the well-known store that became an iconic destination for locals to meet and dance to rock and roll.

INSIDE

c			
r			
w	o	r	d
s			
s			

P16 Crossword



P19 Sport



P19 Sport



FEATURE P14

REGULAR FEATURES

Letters	4
Entertainment	15
Crossword	16
Trades	17
Noticeboard	18
Classifieds	18
Sport	19
Real Estate	19

ECHO News

ADDRESS:
Unit 4/9 The Avenue
Midland WA 6056

Phone: 9374 6666

GENERAL MANAGER / EDITOR

Peter W Lewis 9374 6605
peter.lewis@echo-news.com

ADVERTISING

sales@echo-news.com
Karon McCracken 9374 6610

EDITORIAL

editorial@echo-news.com
Guanhao Cheng 9374 6602
Mike Peeters 9374 6601
Brayden Mould 9374 6603
Daniel Holmes 9374 6603

PRODUCTION

production@echo-news.com
Liz Rowlands 9374 6613
Maja Pietranik 9374 6613
Brody Pettit 9374 6613

ACCOUNTS

accounts@echo-news.com
Caprice Harries 9374 6604

OFFICE HOURS:

Monday-Thursday:
9.00am – 5pm
Closed Friday
Closed: Weekends & Public Holidays

Families face near 25% childcare fee increase

DANIEL HOLMES

BASSENDEAN families will face a near 25 per cent increase in childcare costs from July after councillors voted to raise fees at the town's Wind in the Willows childcare centre.

Following more than an hour of public questions and debate at the May 26 council meeting, councillors voted 4-1 to adopt a new fee structure that will increase the standard daily fee from \$154 to \$192 per child from July 1.

An amendment proposed by Mayor Kathryn Hamilton introduced a discounted rate of \$179 per day for families whose children attend the centre four or more days a week.

Even with the discount, families using the service four days a week will pay \$25 more per day than under the current fee structure.

The decision comes after the council-run childcare service recorded operating losses of more than \$800,000 across the past three financial years.

During the meeting, residents questioned the size of the increase and its potential impact on families already facing rising living costs.

Council's financial modelling assumes an occupancy rate of 80 per cent, which officers acknowledged had not been consistently maintained under the current operating model.

In response to questions from *Echo News* chief executive officer Cameron Woods defended the increase, arguing childcare users should bear more of the cost of operating the service rather than ratepayers.

"Childcare is a specialised service that is used by a relatively small proportion of the community, and council considers it appropriate that the costs of delivering the service are primarily met by those who directly benefit from it," he said.

The town said approximately 27 per cent of children enrolled at Wind in the Willows live outside the Bassendean district, meaning local ratepayers had historically contributed to the cost of care for families beyond the town's boundaries.

Mr Woods said the new fee reflected increasing costs



Families using Wind in the Willows childcare centre will face a near 25 per cent increase in daily fees from July. Picture: Daniel Holmes

associated with operating the service, including staff wages under the town's enterprise agreement.

According to Mr Woods, salaries and wages account for about 70 per cent of Wind in the Willows' operating expenditure.

He also acknowledged they had not increased fees in previous years at a level that would have allowed the service to break even.

"As a result, a significant fee increase is required in the coming financial year," Mr Woods said.

The town has committed to continue operating Wind in the Willows until at least July 2027 while it explores transitioning the service to a not-for-profit or community-based provider.

A public expression of interest process is expected to begin in July.



The proposed increase of 5.5 per cent would represent an average increase of \$88 per property for the financial year.

Swan rate hike goes to public comment

BRAYDEN MOULD

A PROPOSED 5.5 per cent average rate increase for the City of Swan has progressed to a 21-day public comment window following an 8-5 vote at last Monday's Special Council Meeting.

If approved, the increase will add an average of \$1.69 per week to local household expenditures.

During the council debate, Cr Ian Johnson argued against the proposal, stating that advertising a 5.5 per cent increase is way too high during a period of economic pressure.

"We're advertising that we intend to increase rates by 5.5 per cent and this is way too high in my view," he said.

"I think 0 per cent will be the best rate rise or somewhere close to it.

"To have a 0 per cent rate rise, we'd need to save about \$10 million.

"We'd have to reduce capital expenditure on low priority municipally funded capital and reduce admin overhead by increasing efficiency and productivity.

"In financial years 2021-22 and 2022-23, this council did not increase rates.

"The sky did not fall, and the city continued to operate."

Arguing for the motion, Cr Mel Congerton defended the necessity of the advertising process and highlighted the community consequences of

a potential budget freeze.

"Some councillors are suggesting that we go to a zero-rate increase and then cut \$10 million worth of operational or capital works off the program," he said.

"Now that could entail closing down facilities, not providing the maintenance that we do in our parks and gardens, which people are saying is not enough in the first place.

"Why is it that local government has to be the saviour, why do we have to go out and cut all the services that we all currently enjoy because people don't want to pay another \$1.50 a week."

Meanwhile, neighbouring councils are also preparing to advertise similar municipal rate adjustments for the upcoming financial year.

The Town of Bassendean has proposed to increase average general rates by 5.9 per cent at a Special Council Meeting on May 19, which has also progressed to a public comment window.

The City of Kalamunda is similarly introducing an average 5.8 per cent increase to rates among residents following a unanimous vote at its May 26 ordinary council meeting.

For both Kalamunda and Swan, community members can make formal submissions regarding the rate differentials until June 18.

Bassendean residents have until June 12 to make submissions before the 2026-27 budget is finalised.

Macs4u is Moving Up the Road
Our Home of 21 years has major structural problems and will begin a 6 month renovation on July 1, 2026

A Major Clearance Sale Begins June 5
Pick up a bargain at up to 50% off our stock
New UAG MacBook Cases 40% off, Backpacks 25 to 50% off, Used MacBook Airs from \$300
Help Us reduce our move requirements!!

iMACS that originally cost \$1800 to \$3500, Tested and refreshed Now \$250 to \$675

Secure Linux software installed with 1000s of apps available, and many tutorials online. In store lessons also available.



Description	Used HD Price*	New SSD Price*
21.5 in-w/DVD	\$250	\$400
27 in-w/DVD	\$350	\$500
21 in No DVD Thin Model	\$350	\$600
27 in No DVD Thin Model	\$450	\$675

* Prices are for base models described with Linux installed

Pick One Up Today at Macs4u or Order at restorationmac.com.au



Celebrating 23 years of retail in Midland

269 Gt Eastern Hwy Midland WA 6056
08 9274 7111 0410 501 441
info@macs4u.com.au



Wet Weather Gear



KEEP DRY & WARM



Google WASP MIDLAND
OPENING HOURS
 Monday – Friday
 7.30am–5.00pm

WA Safety Products
www.wasafetyproducts.com.au
9250 7622
 2/211 Great Eastern Hwy, MIDLAND

THANK YOU BIKES FOR HUMANITY



CHARITABLE ORGANISATION BIKES FOR HUMANITY BASED IN MIDVALE WHO REFURBISH PRE-LOVED BIKES AND SEND THEM TO COMMUNITIES THAT NEED THEM, CELEBRATED 15 YEARS OF KINDNESS AND GENEROSITY ON MAY 24TH

ECHO YOUR THOUGHTS

Have your say:
editorial@echo-news.com

Thanks for the fish story

Dear Echo News,
 Just a quick letter to say a heartfelt thank you for the front-page article on our recent fish discovery *Rare perch discovery* (Echo News, May 29).
 Trei and Ethan are so proud and excited to be on the cover of the local paper – we'll definitely be framing it for

our new facility when it opens later this year, and of course we'd love to invite you along.

We absolutely loved the cartoon too – having a newspaper cartoon has been a long-time dream for us, so we appreciate it so much!

It's a very special keepsake for our team.

Thank you for consistently supporting the local community, elevating our voices and helping to share our stories. We appreciate you all so much.

Francesca Flynn
 Executive Director
Bibbul Ngarma
 Aboriginal Association

Protecting 'extinct' species

Dear Echo News,
 Interesting to read in recent months in the *Echo News* the discovery of locally extinct species.

One would think with the Department of Conservation, Biodiversity and Attractions' (DCBA) budget of \$750 million a year, this week's quarterly budget papers revealing that this public sector union monopoly would have held someone accountable.

But the state Labor Environment Minister Matthew Swinbourn and the state Labor government are sadly the political representatives of the public sector unions at the expense of the taxpayer.

Funds go into the wages of a job for life monopoly accountable to itself.

The federal Labor government tallies up and issues a press release of the ever-growing list of threatened species and gets the blame.

Ironically the federal Labor government shovels more money out to the states without an open tender for

Thought for the day

"Be kind whenever possible. It is always possible."

– Dalai Lama

non-profit and private enterprise to compete for funds and provide much needed competitive pressure on the union dominated DCBA etc.

Recently I contacted the failing Environment Minister in Western Australia requesting him to put in place a simple process for four alleged extinct species in WA enabling members of the public to survey for them using environmental DNA, given the appalling record of DBCA and its Parks and Wildlife division over decades.

They refused.

Not only did the Minister and his Director General not sign off on the reply it was left to the deputy director general who could not even rule out the existence of these four creatures.

The state and federal governments are more interested in their public sector union besties than getting conservation into the 21st Century.

M Moss
Rivervale

AI is here to stay

Dear Echo News,
 Artificial intelligence (AI) is here to stay and expand with many potential changes to its use which will affect our lifestyle.

A by-product will be huge increase in data produced and the need for this data to be usefully processed.

There are currently about 27 data centres in Perth metropolitan area and with a huge, expected need for many more, the location of these needs more careful attention and planning.

to supply many tens (up to hundreds) of thousands of houses.

An example of coming huge increased amounts of data needing processing is the Square Kilometre Array radio telescope being built in WA's Murchison region.

It has been quoted that this array will generate each day of operation the equivalent amount of data as the world wide web for that day, indicating an enormous increase in the need for data processing capacity and energy consumption with resulting heat release.

Our governments (state and local) need both urgent and careful planning to appropriately cater for this coming issue considering not only socially acceptable location, but energy demand and heat generated.

D Lovelock
Swan View

The Echo reserves the right to edit letters for length, legal reasons or clarity. The opinions expressed do not necessarily reflect those of the Echo. All letters must contain the author's full name, address and phone number for verification purposes.

From the net...

Echo News social media comments

In response to New owners outline their historic post office vision:

Fantastic news. Such a shame it was left in such a poor condition. It is a beautiful monument to Guildford's past. We will definitely be there.

C Paulus

Just don't tear down a beautiful old building.

E Kendall

Thankfully it sounds in keeping with its heritage and beauty!

C Leigh

In response to Trees felled on Alexander Drive were approved: Swan:

You can't replace old trees. Perth has lost too much canopy. Hardly surprising Swan gave the go ahead. Who was the arborist?

K Goodwin

SMILE

@ Foothills Denture Clinic



- ✓ New full dentures & partial dentures
- ✓ New implant retained over dentures
- ✓ Denture repairs & relines
- ✓ Sports mouthguards

DENTAL PROSTHETIST



RAYNEE McARTHUR

Phone
9250 1733
 for an appointment



SHOP 4, 16 THE AVENUE, MIDLAND
www.foothillsdenture.com.au



Town of Bassendean's Bindaring Park will be one of the public spaces subject to the new amendments to the tree policy.

Bassendean pushes on with street tree policy

GUANHAO CHENG

DURING the Town of Bassendean's May council meeting, councillors voted en bloc to approve amendments to their public tree policy, strengthening protections.

Council unanimously approved the amendments proposed for their street and reserve trees policy.

The town's amendments were aimed to improve canopy cover above 2024 levels for roads and parks based on the state program, while progressing to the larger aim of 30 per cent tree canopy by 2040.

Council support for phasing in mandatory planting of trees on verges is now no longer bound to a specified year under the new amendment.

The amendment also follows on from a resolution made in April's council meeting where the ratio for the replacement of removed trees has been increased, with the policy recognising juvenile and mature categories.

Juvenile trees which are defined as being planted within the last three years must be replaced by a minimum of two trees if removed.

Mature or established trees which are defined as being planted more than three years ago must be replaced by a minimum of three trees if removed.

The removal of dead trees has also been given a new clause in the policy which says, "the removal of dead trees or their retention for habitat will be based on consideration of risk, ecological benefits, location, amenity and canopy opportunity".

The clause also specified that dead trees would be removed before the respective upcoming winter planting seasons if budget allowed.

The policy had also been changed from its current yearly review basis to once every two years, meaning the next policy review is set for 2028.

The decision comes after the council first considered increasing planting rations and minimum sizes for replacement trees at the end of 2025.

In *Bassendean tree canopy policy to strengthen* (*Echo News*, January 9) Town of Bassendean chief executive officer Cameron Woods said in December that the town didn't want people to pick and choose whether or not they had a tree on the verge as that decision rested with the council.

The amended policy is not to be confused with Bassendean's local planning policy (LPP) 13 tree retention and provision which protects trees on private properties.

LPP 13 was the policy that drove a \$17,000 penalty which was imposed in the past year on a Town of Bassendean property owner after they removed a tree which was marked to be retained.

The penalty was handed down by the Magistrates Court with the owner also ordered to pay for the town's legal fees.

According to the Town of Bassendean, they are the first local government in Perth to adopt the policy position and "are proud to be leading the way in protecting not just public trees, but those on private land too".

Ellenbrook girls off to Kalgoorlie pageant



Leia Daly, 9, Sienna Lindsay, 11, Florence Evans, 18 months, Adeline Daly, 11, Audrey Hill, 12, prepare for the Mini Miss Kalgoorlie pageant.

MIKE PEETERS

EIGHT Swan youngsters will be heading to Kalgoorlie next week for the Mini Miss Kalgoorlie national pageant.

As members of the Ellenbrook modelling club Glitz & Co run by director Michaela Evans, the entrants are among 30 competitors from around Australia traveling to the mining town in mid-June to compete for the various titles.

Mrs Evans said Mini Miss Pageants (MMP) began in 2016 with its first event, the Mini Miss Tasmania pageant.

"Since then, MMP has run over 28 individual pageants around Tasmania and in Kalgoorlie, WA," Mrs Evans said.

"This year, we have contestants from the Ellenbrook and Herne Hill areas aged from 16 months to 12 years entering the finals of the Mini

Miss Kalgoorlie pageant."

Mrs Evans said at Glitz & Co she taught pageantry (modelling) and ran events for babies, kids, teens and adults, both male and female.

"We believe that by instilling confidence and inspiring growth, MMP can provide opportunities for both men and women through its unique platform," she said.

Mini Miss Kalgoorlie supports all ages and abilities with a number of categories including Little Miss Kalgoorlie (0 to 5 years), Junior Miss Kalgoorlie (ages 6 to 9), Junior Teen Miss Kalgoorlie (10-12), Teen Miss Kalgoorlie (13 to 17), Miss Kalgoorlie (18-29), Ms Kalgoorlie (30 plus) and Mr Kalgoorlie (all ages).

Mini Miss Pageants Australia will be in Kalgoorlie on Saturday, June 13 and Sunday, June 14.

For further information contact Mrs Evans on 0418 266 517 or go to www.minimisspageants.com



 (08) 6394 5020

Colorbond

SHED SAFE

SITE SPECIFIC ENGINEERING

STEEL SUPPLIED BY BlueScope



ECH0310125J

Midland Meals celebrates with new mural



Midland Meals and community members gathered to celebrate the unveiling of a new mural championing kindness and generosity.

GUANHAO CHENG

COMMUNITY members, volunteers, business operators and government representatives gathered recently to celebrate the official opening of Midland Meals' new Midland community space.

The event marked the unveiling of a community-painted sea container, transformed into a vibrant and welcoming space through the creativity and dedication of local artists Brianna Dawson and Julie Winmar.

The artwork on 56 Morrison Road reflects community, connection and support for those experiencing hardship.

Midland Meals Founder Loren Pratt spoke about the importance of community connection and the organisation's commitment to supporting people experiencing food insecurity and hardship.

The event also recognised the invaluable contribution of Midland Meals' volunteers, whose dedication makes it possible to provide meals and support 365 days a year.

A special presentation was made to the two artists in recognition of their contribution to the project, with bouquets presented as a token of appreciation for their work in creating a lasting community asset.

The ribbon was officially cut by City of Swan Mayor Tanya Richardson, MLA Hannah Beazley, Mr Pratt, and the artists, symbolising the collaboration between community, government, local business and volunteers that brought the project to life.

A Midland Meals spokesperson said they would like to sincerely thank everyone who contributed to the success of the project and the ribbon-cutting ceremony.

"In particular, special thanks go to Shane and Leanne

Willcox of SLW Transport Pty Ltd, who generously shouted coffee for all attendees by covering the tab for the coffee van, helping create a warm and welcoming atmosphere for guests throughout the afternoon," they said.

"The new community space will serve as a lasting reminder of what can be achieved when people come together with a shared purpose supporting some of the most vulnerable members of our community with dignity, compassion and care."

The spokesperson said the organisation also acknowledged the many sponsors, volunteers, supporters, local businesses and community members whose generosity and encouragement made the project possible.

More information about Midland Meals and ways to support its work can be found by contacting Midland Meals through admin@midlandmealsinc.com.au



SLW Transport
PTY LTD

SLW Transport is family owned & operated






You need it moved just ask!

Prime Movers

Rigid Courier Utes

Side Loaders

Single Trailers – Triple Road Trains

Oversize Haulage

Mine & Construction Site Projects

Wharf Pick-ups & Deliveries





Phone: 0438 774 201




130a Milner Rd, HIGH WYCOMBE WA 6057

Canola growers urged to monitor crops for virus

CANOLA growers have been urged to monitor crops for signs of the significant disease pathogen turnip yellows virus (TuYV) and its vector, green peach aphid, and take early action to protect crops.

With forecasts for warmer growing season temperatures and recent rainfall, conditions are suitable for green peach aphid, which spreads TuYV, formerly known as beet western yellows virus.

Monitoring is required for all canola crops – even those sown with seed that has undergone neonicotinoid seed treatment, as recent research shows it no longer provides adequate protection from green peach aphid and subsequent TuYV.

TuYV is one of the most damaging and insidious threats to canola crops, which cannot be cured once plants are infected, often causing losses of 10 to 20 per cent, sometimes without obvious symptoms, and up to 50pc in severe cases.

The Department of Primary Industries and Regional Development (DPIRD) has contributed to a new 'Manage Turnip Yellows Virus in Canola' Grains Research and Development (GRDC) fact sheet with information to help optimise crop potential.

DPIRD senior research scientist Ben Congdon said TuYV infections could be highly variable and difficult to distinguish from nutrient deficiencies and environmental stresses.

"Foliar symptoms include leaf purpling or reddening, beginning at the leaf margins of lower leaves, which may progress to the whole plant but often can be mild or completely absent," Dr Congdon said.

"Furthermore, symptoms can appear weeks or even months after virus transmission, meaning symptoms should not be used to inform spray management decisions so aphid monitoring and virus testing is recommended."

Removing broadleaf weeds and volunteers growing near canola paddocks can be useful to reduce the magnitude and proximity of green peach aphids and the virus reservoir.

Foliar insecticides are the only option to target green peach aphid infestations and control TuYV once the crop has been sown, which are most effective during the early stages of GPA infestation and crop development.

Dr Congdon said TuYV caused the greatest damage when plants were infected during early development, from emergence to the seven leaf stage.

"The greater the percentage of the crop infected



DPIRD senior research scientist Dr Ben Congdon checks an insect suction trap, for green peach aphid.

and the earlier the spread occurs, the greater the potential yield losses," he said.

"The canola variety, virus strain and the presence of other stresses will also influence the degree of yield impact from this virus.

"The fact sheet has a comprehensive table on how to monitor for green peach aphids and guidelines on targeted insecticide applications."

Dr Congdon recommended foliar insecticides only be applied in a targeted manner, following careful crop monitoring.

"It is really important to note that pre-emptive spraying is unlikely to provide good control, while spraying once green peach aphid and TuYV are widespread will provide absolutely no benefit, as plants can't be cured once infected," he said.

"TuYV is a growing problem across Australia, especially since neonicotinoid-based seed treatments have failed to adequately control green peach aphid.

"It is important for growers to be vigilant and carefully consider management strategies to control this significant disease."

DPIRD monitoring in the Northam, Geraldton, Albany and Esperance areas will provide insights on TuYV risk as the season unfolds.

Growers and advisers are encouraged to share paddock intelligence via DPIRD's PestFacts WA Service, developed with GRDC investment, and to report green peach aphid observations using the app.

Bassendean Nth move to underground power

GUANHAO CHENG

THE Bassendean North underground power project is a step closer, with the town entering a co-funding agreement with Western Power to deliver the project.

The project forms part of Western Power's targeted underground power program (TUPP), which identifies priority areas for underground power based on the condition of ageing overhead infrastructure.

Town of Bassendean Mayor Kath Hamilton said the agreement reached with Western Power was a significant milestone for Bassendean North and great news for the community.

"Underground power is a once-in-a-generation infrastructure upgrade that will improve the reliability of power supply, reduce storm-related outages and enhance the look and function of local streets," she said.

"It also supports the future needs of our community, including increased tree canopy, new street lighting and capacity for new technologies.

"Property values also tend to increase for properties connected to underground power."

According to Western Power, the process for undergrounding power for an existing home is to dig a hole, install the cables and provide a green dome which will act as the new connection to the power grid.

The green dome will be connected to the meter box before Western Power switches power from the poles to the new dome.

Without needing to compete with power poles, trees are given more space to grow and flourish.

The more enclosed build and form factor benefits of the green dome also make power less likely to be affected by weather changes and removing power poles also decreases risk of car collisions.

The town first consulted with property owners and residents in the Bassendean North area in 2022 to gauge community interest in the project, with the majority of residents being supportive.

Council subsequently resolved to enter into a memorandum of understanding with Western Power in December 2022.

While the project was originally expected to start earlier, Western Power experienced delays while appointing a contractor.

Those issues have now been resolved, design



Town of Bassendean is progressing an agreement with Western Power to move power underground in Bassendean North. Picture: Western Power

work has been finalised, and construction is currently forecast to begin in October 2026, continuing for approximately 11 months.

The cost of the project is shared between Western Power, the state government and property owners and detailed financial modelling is currently being finalised.

The Town of Bassendean said it will not pass on any service charges to affected property owners in the 2026/27 financial year while it developed payment plans and engaged with property owners.

Further information on the proposed service charge recovery model will be considered by council separately at a future council meeting.

Property-specific information, including details about individual connections, will be provided directly to affected owners and residents in coming months.

Two further underground power projects are earmarked for Bassendean East and Bassendean West in future years, with both in the scoping stage.

Further information is available at bassendean.wa.gov.au/undergroundpower26

Bassendean looks for new pump track sites

GUANHAO CHENG

THE Town of Bassendean is taking the first step toward delivering a nature-based jump or pump track, with council backing an investigation into potential sites for a small to mid-sized facility within the area.

The council unanimously supported the motion which requested Town of Bassendean chief executive officer Cameron Woods to investigate suitable sites, consult with the community once a site has been found and to restore damaged areas used as bike tracks.

Any potential location will need to avoid environmentally sensitive and residential areas.

Once a suitable site is identified and approved by council, the community will be invited to help shape a concept plan, with the project targeted for delivery in the 2026/27 financial year.

The proposed track is intended to provide riders with a safe, purpose-built space that can meet design standards and be appropriately managed and insured.

It is also expected to help reduce damage caused by informal bike tracks in unsuitable locations.

As part of the project, existing unauthorised tracks in inappropriate locations would be rehabilitated and revegetated once the new track site is available for use.

Part of the reason provided by the town for why the motion was proposed was to address various conflict issues from unauthorised informal tracks that were being built and the following disputes with non-riders.

Council also supported the idea of maintaining or co-managing the site with a formal rider group and approved a \$20,000 allocation for investigation and planning work.

According to the town, involving interested community members in designing elements of a new dirt jump track will potentially deliver better



Town of Bassendean will look for sites suitable for a new pump track following community concerns unapproved tracks were being made.

outcomes for the riders and improved user experience once the project is delivered.

Using quality materials instead also improves safety standards of the track.

Mayor Kath Hamilton said the investigation would help council find the right balance between supporting young people and protecting the town's natural environment.

"This is about planning for a safer, purpose-built riding space while making sure we protect environmentally sensitive areas and respect nearby residents," she said.

"If a suitable site is identified, we want the community and riders to help shape the concept, so the end result is a well-designed facility that meets local needs and supports better outcomes for the district."

ABS

Stay safe today and everyday

- ✓ Logbook Servicing
- ✓ Clutch Service & Replacement
- ✓ Tyres
- ✓ Commercial Brake & Clutch Repairs
- ✓ Interest Free Finance
- ✓ Minor Servicing
- ✓ Steering & Suspension
- ✓ Vehicle Diagnostics
- ✓ Air Conditioning Service & Repairs
- ✓ Major Service
- ✓ 4WD Service
- ✓ Batteries
- ✓ Loan Cars
- ✓ Brake Services & Repair
- ✓ Mechanical Repairs
- ✓ Vehicle Inspections
- ✓ Reconditioning & Machining Services

Book your car in for a service today!



(08) 6161 4636

- Meet the new owners
- Trusted mechanics

www.absautomidland.com.au



Always in front!

Read the latest news online at



www.echonepaper.com.au

Subscribe Now



Your FREE Local Weekly newspaper is also available from local outlets or subscribe NOW to get Echo News emailed direct to your inbox.

sales@echo-news.com | editorial@echo-news.com
Suite 4, 9 The Avenue, Midland | 9374 6666



Kids with bikes from B4H WA in South Africa. Picture: B4H WA

Bicycles for Humanity WA celebrate 15 years

CHARITY organisation Bicycles for Humanity (B4H) WA celebrated 15 years of service at the end of May, reflecting on their time providing accessible transportation for communities in need.

The celebration was held at the B4H WA bike shed in Midvale on May 24 attended by 70 volunteers, sponsors, supporters and friends of the organisation.

Guests were treated to live presentations and video messages from recipient communities.

B4H director David Tucker provided feedback from eight communities he had visited in Namibia last year and said the resounding question was, "When can you send us more bikes?"

Orion Minerals sustainability and business support executive Marcus Birch highlighted by video the provision of bikes to numerous school children of all ages in Prieska, South Africa.

The bikes allowed the children to ride kilometres to school in a quarter of the time they

used to walk.

Mission in Health Care and Development founder Luc Mulimballimba's video which celebrated the benefits of bikes to women's health in the Democratic Republic of Congo by easing the burden of carrying heavy loads like water to home, or fruit and vegetables to market was also shown.

Rotary WA district governor Veronica Lawrence praised the collaboration between Rotary and B4H WA in delivering more than 1000 bikes to school children and small business-people in rural South Africa.

Bike Creative Foundation founder Chris Sellings said the positive changes to whole communities in the Kimberley was a result of his project to distribute bikes to numerous schools.

The formalities were capped off by a very warm and heartfelt vote of thanks to all B4H WA volunteers by MLC Ayor Makur Chuot.

Ms Chuot was the first member of the South Sudanese community elected to WA Parliament.

She spoke from her lived experience, growing up in a refugee camp in Kenya, after evacuation from South Sudan.

The event was supported by Volunteering WA and Lotterywest.

B4H WA's mission remains to address poverty by the donation of refurbished, pre-owned bicycles to communities in rural Africa and remote indigenous communities in WA

and NT.

In these communities a bicycle provides affordable transport to access food and water, health care and travel to work and school.

In 15 years, thousands of people's lives have been changed in seven countries across Africa by the delivery of 11,000 bikes, along with spares and tools.

Another 2000 bikes have been sent to numerous schools in remote indigenous communities from Esperance to Kununurra and across the border into NT.

Come along this Sunday to
CHURCH
The only thing missing is "U"

Grace Baptist Church

Pastor:
Graham Thomas
Ph: 0425 354 159
gbcmidland.org.au

SERVICE TIMES

SUNDAY SCHOOL: 9.30am
FAMILY WORSHIP: 10.30am
MIDWEEK PRAYER MEETING: 7.00pm

Ellenbrook Service @ 3pm **Woodlake Community Centre**

"For by grace are ye saved through faith..." Ephesians 2:8

Faith Baptist Church

ELLENBROOK
"Reaching People for Christ"
0425 354 159

Woodlake Community Centre
Highpoint Blvd
Sundays 3pm

"Believe in the Lord Jesus Christ & thou shalt be saved" Acts 16:31



The Shire of Northam recently officially opened its inaugural walk of fame and is now calling on nominations for 2027.

Northam unveils first walk of fame

THE Shire of Northam has announced its first walk of fame in Bernard Park which celebrates the lives of exceptional community members past and present.

Shire of Northam President Chris Antonio presided over the unveiling ceremony on May 23, which named five community members whose contributions left a legacy in the region.

The inaugural inductees for 2026 were George Throssell, Genoefa Budas, Janice James, Marlene Gazis and Shirley Christmass.

Mr Throssell was the second WA premier and also a prominent businessman who was known as the lion of Northam.

He started service early as Northam's postmaster in his mid-20s, then led in local government before he served as the Commissioner of Crown Lands, eventually becoming the second WA Premier in 1901.

Ms Budas has been recognised for her time spent advocating for multicultural heritage, having preserved the history of Northam's post-WWII displaced persons for more than 62 years.

Ms Budas was the daughter of parents who were displaced following Germany's invasion of Poland and Ukraine during WWII.

She spent her early years in refugee camps in Germany, Northam Army Camp, Cunderdin Air Base and Holden Camp in Northam.

Her work as leader of heritage organisations, organiser of multicultural festivals, and developer of educational materials for school has earned her recognition with the shire and beyond.

Ms James is honoured as a distinguished historian of Romani descent who was recognised as an honorary Noongar Elder for her profound respect for culture and her work creating Australia's largest

collection of Aboriginal genealogical records.

She also served as a councillor in Northam and helped beautify the area by restoring the Northam Cemetery and creating Melissa's Fairy Garden.

Ms Gazis is celebrated as the founder of non-profit organisation Share and Care and as the foundation president for 19 continuous years she developed programs for domestic violence assistance, financial counselling, and childcare.

Her Share and Care organisation grew from a small neighbourhood organisation to a service that was accessed throughout the Wheatbelt region.

She was a tireless advocate for migrant women and the vulnerable all while still working her regular job alongside her husband as operators of Northam's greengrocer.

Ms Christmass was honoured for her dedication to sports in the community as a president, a player, coach and umpire and was also honoured for her community volunteering.

She was instrumental in establishing the foundation of the Northam Netball Association which was known in 1968 as 'Women's Basketball'.

She served as its president for 27 years, with her proving her lifelong passion for sport by umpiring her final game at age 81.

She was a volunteer for Meals on Wheels, the Red Cross, and Northam's schools, was awarded the Fred Killick community service award and celebrated for defining the spirit of sport in Northam.

Visitors may find the walk of fame in Bernard Park with plaques starting at the swan enclosure and stretching toward Peel Terrace.

Following the momentum of the 2026 recognitions, nominations for the 2027 Shire of Northam Walk of Fame are officially open too and may be accessed via tinyurl.com/46kzma63



Midland MLA Steve Catania with Deputy Premier and Treasurer Rita Saffioti at the budget breakfast in Swan.

Treasurer talks budget in Swan

GUANHAO CHENG

SWAN businesspeople and key stakeholders from across the region gathered on Tuesday to hear directly from Deputy Premier and Treasurer Rita Saffioti on the state budget.

The breakfast hosted by Ms Saffioti, Swan Hills MLA Michelle Maynard, Midland MLA Steve Catania, Midland-based MLC Klasey Hirst and MLC Parwinder Kaur brought together more than 200 representatives from businesses and organisations based in the West Swan, Swan Hills and Midland electorates and surrounding communities.

The attendants gathered to discuss how the state budget was delivering on the state government's priorities and the economic conditions affecting the region and state.

Discussion focused on the importance of co-ordinated investment in housing, transport and major employment precincts to support business confidence, workforce participation and long-term economic growth.

The breakfast highlighted the role of increased housing density around activity centres, continued investment in transport infrastructure and connectivity, and major projects such as hospital and rail infrastructure to bring more people into local centres to work, visit and do business.

As reported in *Midland cross-agency working group to address long-standing congestion* (Echo News, May 15), the state government has been working with the City of Swan and other departments to address longstanding traffic and road safety issues in Midland.

Housing plan a boost for North Ellenbrook (Echo News, May 29) reported the recently approved North Ellenbrook West district structure plan would facilitate the creation of 5000 homes or more in North Ellenbrook area over 20 years.

Including Ballajura, this forms part of the state government's recorded \$4.7 billion investment in housing in the 2026-27 state Budget, \$522 million of which has been committed to deliver power and water infrastructure to open up thousands of residential lots in major growth corridors.

A further \$375m will be invested for a new state-led build to sell program which will see the construction of up to 500 new homes exclusively for first home buyers, including in Ballajura, Stratton and Midland.

Ms Saffioti said the Swan region played an important role in diversifying the state's economy as a go-to destination for some of the best hospitality and tourism experiences.

"It is also home to a growing population, which is why we're investing in the critical housing and

public transport infrastructure needed to support a great quality of life for local families," she said.

"I'm so proud that our government has delivered the Metronet Ellenbrook line for this community as well as the new Midland station, and now we're focused on building new homes at those Metronet stations.

"Our government is focused on keeping Western Australia's economy strong so businesses across Swan can continue to provide quality jobs and drive the region's growth."

Part of the infrastructure improvements in Swan include \$2m to be invested to planning and pre-construction activities to improve access to Swan Christian College on Great Northern Highway.

According to parents of students from Swan Christian College, safety of students crossing the highway and the congestion caused by bottlenecking as lanes decrease have been a driver of long-standing traffic and safety issues in the area.

Social enterprises such as Binar Community Hub in Bellevue, led by Binar Futures founder and executive director Adam Desmond, will also receive \$6m to support at-risk youth, young people and families in the area.

As reported in *Midland dad is nominated for sports father of the year award* (Echo News, August 9, 2024) Mr Desmond is recognised as a leader of the Midland community who uses sport to help build leadership and promote health.

Mr Catania said Midland is increasingly a place people are travelling into, not just out of.

"That two-way movement is vital for local businesses," he said.

"Investment in housing density, transport infrastructure, the old workshops and continued hospital development is about creating activity in our centre and supporting businesses through increased foot traffic, jobs and services."

Ms Maynard agreed and said the Swan Hills region was home to a diverse and growing business community with strong connectivity being essential to support growth.

"This budget focuses on key areas for Swan Hills businesses including boosting tourism for our Swan Valley region and investing in infrastructure to support our growing area," she said.

Ms Hirst said the event was a great opportunity for local businesses to hear directly from the Deputy Premier and Treasurer about the state budget and key investments supporting growth, jobs and infrastructure across the eastern corridor.

"From housing and transport infrastructure to health services, tourism and major employment precincts, these investments are already creating vibrant local centres that support businesses and ensure our communities continue to thrive."

Nominate for the 2026 WA Youth Awards

NOMINATIONS are closing soon for the 2026 WA Youth Awards which aim to shine a light on our young community leaders, volunteers and innovators.

The awards celebrate the passion, resilience and impact of young people aged 10 to 25 and their outstanding achievements and positive contributions to the community.

The awards also reward outstanding groups and organisations that serve and support the state's young people.

The award categories are Lived Experience, Most Outstanding Youth Worker, Young Change-maker, Collective Action, Rising Voice, Mile-

stone, Memorial, Action and Collaboration.

Category winners receive a \$1000 prize.

The WA Young Person of the Year award will be selected from all categories which honour individuals. The WA Young Person of the Year receives a \$10,000 project allowance to pursue youth-related initiatives across the state.

The WA Youth Awards take place on Friday, September 11 at the Pan Pacific Hotel.

Nominations, which close Monday, June 8 are quick and easy to submit, and nominees can nominate either themselves or someone else.

To nominate go to www.yacwa.org.au/wa-youth-awards-2026/

A locust is a locust is a... grasshopper?



Photos left to right: Adult *Valanga irregularis*, juvenile *Valanga irregularis* (second & third image), adult Australian plague locust.

Did you know that all locusts are grasshoppers...but not all grasshoppers are locusts? Grasshoppers and locusts are part of the order Orthoptera, meaning 'straight-winged'. Grasshoppers are plant-eating insects with long hind legs, specialised for jumping and producing their well-known 'chirping' sound. The term 'locust' simply refers to grasshoppers which can breed and feed within large groups (swarms) and cause extensive damage to surrounding vegetation.

Getting to know our natives

In suburban gardens, people mostly tend to see the giant Australian grasshopper (*Valanga irregularis*) and less often the Australian spur-throated locust (*Austracris guttulosa*). Although these species are usually found across Northern Australia from Carnarvon to Northern NSW, they have happily taken up residence in the Perth, Peel and South-west regions during the last decade or so. Both species have very large bodies in their adult stages, ranging between 5 to 7 cm in length, with long back legs and a throat spur. Adults can live up to 12 months. The females lay their eggs in the soil in late spring, and after hatching, the nymphs change colour with each moult and can vary from shades of light green to spectacular reds with blue stripes. The adults are characterised by a strong patterned body colour, white strip on the top of their thorax, dark coloured antennae and red spines (spurs) with black tips on their hind legs.

Giant Australian grasshoppers and spur-throated locusts are often mistaken for the Australian plague locust (*Chortoicetes terminifera*). Australian plague locusts usually inhabit pastoral regions in relatively low numbers, but populations can explode with favourable weather conditions. Adults are between 2.5 to 4 cm long and vary in colour from light to dark shades of green and brown. They have a distinct dark blotch at the outer edge of the hind wing, and the inside of their hind legs are red in colour. Australian plague locusts are rarely seen outside agricultural settings.

Control

Ignoring an agricultural plague – chemical control is rarely effective or recommended in the home garden. Thankfully, a healthy garden environment can keep their numbers manageable. Young grasshoppers especially, are eaten by a wide variety of predators like birds and reptiles which control their juvenile stages. They can also be parasitised by mites, native solitary wasps, flies and nematodes. Hand removal and placing the grasshoppers in the freezer for 3 hours would be the easiest method if you are wanting to control adult grasshopper numbers. Make sure to wear strong gardening gloves as the spines on their hind legs may be sharp! If you see an unfamiliar grasshopper, report it! If there are many, try and find the largest ones as the adults are more distinctive than the nymphs. Take clear photos of the leg and body markings, antennae colour and include a ruler, pen or coin for scale.



Report your observations

MyPestGuide® Reporter via app or
[online mypestguide.agric.wa.gov.au](http://online.mypestguide.agric.wa.gov.au)

Pest and Disease Information Service
 (08) 9368 3080 | padis@dpird.wa.gov.au



Attendees at the launch of Young Voices for Change at Midland Gate, a community art exhibition by No Place for Poverty.

Children's voices on poverty at Midland Gate

A POWERFUL new community art exhibition, Young Voices for Change, has launched at Midland Gate Shopping Centre, showcasing real postcards written by children across the state about poverty.

Presented by No Place for Poverty, the exhibition brings together handwritten messages created by children and young people who were asked to reflect on a confronting reality: more than 420,000 people in WA live in poverty.

In response, children were invited to write directly to government decision-makers, sharing how this made them feel, and what they believe needs to change.

The result is a collection of honest, thoughtful, and hopeful postcards, each signed with a name and age, and rooted in a clear message: that the rules creating poverty

can and should be fixed.

"These postcards are simple, but incredibly powerful," No Place for Poverty lead Alex Hughes said.

"They show that children understand what's happening in their communities. They care deeply, and they're asking for something better, not just for themselves, but for everyone."

Rather than focusing solely on statistics, Young Voices for Change brings a human perspective to an issue affecting communities and the installation presents children not as bystanders, but as voices calling for fairness and change.

The exhibition is hosted in the highly accessible environment of Midland Gate Shopping Centre, allowing

members of the public to encounter these messages in their everyday lives for six weeks.

Developed in collaboration with partners including Barking Gecko Arts, and supported by Midland Gate as host venue, the exhibition is designed to invite both reflection and participation.

Visitors are encouraged to read the postcards and consider the question at the heart of the exhibition: What would you write?

No Place for Poverty is a movement of West Australians who believe everyone deserves a fair chance to live a good life. By amplifying community voices and lived experiences, the movement works to bring attention to poverty in WA and advocate for a stronger, more inclusive future.



The community art exhibition at Midland Gate Shopping Centre looks at the responses of children living in poverty.



Governance and Leadership

Volunteer Workshop


Tuesday 16 June 2026
6-8pm | Boya Community Centre

Governance, Vision & Strategy Basics

Get back on track with stronger governance, clearer vision and practical strategy

Registrations essential scan QR code to register



Courses for cancer patients in Midland

CANCER Council WA is encouraging people affected by cancer, including carers and family members, to explore its free Life Now programs to be delivered in Midland.

The programs are helping participants across WA find connection, calm and practical ways to cope during and after treatment.

Mindfulness facilitator Karen Haddon, who has been delivering Life Now mindfulness and meditation courses since 2022, said the programs provide a safe and supportive space for people navigating the challenges of cancer.

"Mindfulness helps us identify the start of emotional spirals more easily and provides us with the inner resources to support ourselves during these difficult times," Ms Haddon said.

"People are using the practices while they are in scans, waiting rooms or waiting for phone calls from oncologists. They can practice with their eyes open and nobody else even knows they are doing it."

Ms Haddon said participants often feel relieved to be surrounded by others who understand what they are going through.

"By week two, participants often say they feel like they are in a room full of other people who know what it's like. They say they do not have to pretend, do not have to put on a brave face, and can simply be themselves," she said.

"There is no expectation that people show up at their best. They can show up however they are, and they will be welcomed into the group."



Mindfulness facilitator Karen Haddon.

Life Now offers a range of free programs including mindfulness, meditation, yoga, Tai Chi and exercise programs for people affected by cancer.

Cancer Council WA Life Now Program Coordinator Annika English said the program is designed to introduce mind-body practices in a safe and supportive environment and empower people to manage their physical and mental wellbeing.

"Our evidence-based Life Now courses offer physiological, psychological and social support to people affected by cancer and their primary carers," Ms English said.

"We know that people with cancer who exercise regularly have fewer and milder side effects from their treatment."

All courses are free with the first one commencing on Wednesday, July 1, from 12pm to 1pm at the HBF Physio, Centennial Place Midland and run for 12 weeks on Wednesdays and Fridays.

To apply go to www.cancerwa.asn.au/get-involved/event-calendar/life-now-exercise-midland-1-july/

Another course will be held from September to November.

For further information go to www.cancerwa.asn.au

eye on crime



Midland and Glen Forrest massage therapist facing charges over ten sexual offences

SEX assault squad detectives have charged a 44-year-old man with ten offences following an investigation into alleged sexual offending in the Midland and Glen Forrest areas.

It will be alleged between 2020 and 2022, the accused sexually assaulted five female clients during remedial massage appointments.

Following the release of a media statement on April 2, four of the five women contacted police to report they had also allegedly been sexually assaulted by the accused.

The accused operated a massage business from rented treatment rooms within various physiotherapy businesses in the Glen Forrest and Midland areas.

The 44-year-old man from Coogee has been charged with three counts of sexual penetration

without consent and seven counts of unlawful and indecent assault.

He appeared before the Midland Magistrates Court on Tuesday, May 26 where he was granted bail and remanded through to July 7 to reappear in Midland Court.

Detective senior constable Mason Dent thanked the community for their ongoing support in providing information vital to police investigations.

The investigation is continuing and detectives urge anyone with any information relating to this or any similar incidents, to contact Crime Stoppers online via www.crimestopperswa.com.au or by calling 1800 333 000.

Information can also be provided via the anonymous Safe2Say online reporting platform at wapolice-force-sex-crime.safe2say.com.au/report.

Midvale traffic crash just avoids freight train

NATIONAL Road Safety Week was recently held, with the WA Police Force reminding all road users to take responsibility for their actions and commit to safer driving behaviours to help reduce the number of serious and fatal crashes.

On Thursday, May 21 a driver had a close call after almost colliding with a freight train in Midvale.

This follows the incident two weeks ago when a passenger train collided with a truck in Guildford.

The second incident occurred about 11.05pm, and police will allege the woman was driving a Suzuki Grand Vitara wagon on Morrison Road near Harold Road when she failed to stop at a railway crossing while red lights were flashing.

The woman allegedly drove around the boom gates and into the path of an oncoming freight train, narrowly avoiding a collision.

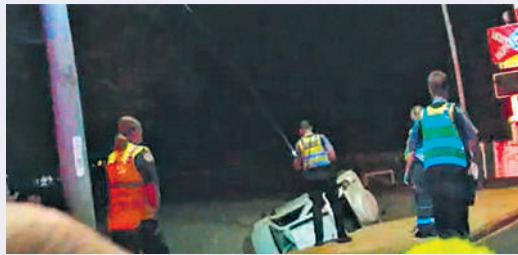
She then took evasive action, causing the ve-

hicle to roll and come to rest upside down beside the railway line.

The woman allegedly gave a positive alcohol reading.

Officers from Midland Police issued the 47-year-old Kenwick woman a disqualification notice and charged her with driving a motor vehicle under the influence of alcohol.

She is due to appear before the Midland Magistrates Court on June 24.



Chidlow firearms seizure following search

DRUG and firearm squad detectives have charged two people with several firearm offences, following the search of a property in Chidlow.

About 6.20pm on Sunday, May 10 police responded to reports of a fire at a residence on Heron Close.

Department of Fire and Emergency Services personnel initially attended the scene and, during a search of the property, located a quantity of firearm related items.

On Monday, May 11 detectives from the drug and firearm squad executed a search warrant at the property resulting in the seizure of a large quantity of firearms, parts and ammunition.

Two occupants were inside the residence at the time of the fire and were not injured.

The cause of the fire is being treated as

non-suspicious.

A 71-year-old man has been charged with one count each of unlawfully possessing three or more firearms, fail to store firearm in compliant storage, fail to store related thing (ammunition) in compliant storage and unlawfully possess a major firearm part.

A 35-year-old woman has been charged with one count of unlawfully possess a firearm and fail to store related thing (ammunition) in compliant storage.

Both parties have been summonsed to appear before Midland Magistrates Court at a later date.

Inquiries remain ongoing.

Anyone with information is asked to contact Crime Stoppers online via www.crimestopperswa.com.au or by calling 1800 333 000.

Ballajura fatal crash is under investigation

MAJOR crash investigation officers are investigating a crash that occurred in Ballajura on Wednesday, May 20.

About 1.30pm, a man was riding an e-scooter along Kittyhawk Parade, near Kingfisher Oval, when he crashed from a footpath onto the verge of a residential property.

The man died from his injuries at the scene. Major Crash investigators are conducting an

examination of the scene and are appealing for anyone who witnessed the incident to report to Crime Stoppers via www.crimestopperswa.com.au on 1800 333 000.

Dash-cam or mobile phone vision relating to this crash can be uploaded directly to investigators via this link: <https://wapf.au.evidence.com/axon/community-request/public/seriouscrashballajura20-05-2026>

If you or anyone you know has been affected by a road crash, contact Road Trauma Support WA on 1300 004 814.

The WA Police Force continues to urge all motorists to take care on the road. Drive safely and keep in mind the wellbeing of yourself and others.

Ellenbrook serious crash being investigated

OFFICERS from the major crash investigation section are investigating a crash that occurred in Ellenbrook on Tuesday, May 12.

About 9.15am, a red MG station sedan travelling north on Main Street and a grey Ford Ranger, towing a horse float, travelling west on The Promenade were involved in a collision.

The 36-year-old male passenger of the MG was conveyed to Royal Perth Hospital for treatment of injuries sustained.

Major crash investigators are conducting an examination of the scene and are appealing for any witnesses to contact Crime Stoppers online via

www.crimestopperswa.com.au or by calling 1800 333 000.

Dash-cam or mobile phone vision relating to this crash can be uploaded directly to investigators via this link: <https://wapf.au.evidence.com/axon/community-request/public/seriouscrashellenbrook12052026>

If you or anyone you know has been affected by a road crash, contact Road Trauma Support WA on 1300 004 814.

The WA Police Force continues to urge all motorists to take care on the road. Drive safely and keep in mind the wellbeing of yourself and others.



ECHO NEWS

SUBSCRIBE NOW

Get your FREE Echo News direct to your inbox every week

Or pick up your Echo Newspaper from:

Go to our website

www.echonepaper.com.au

& click on the Subscription link in the top right hand corner



- AVELEY:**
Aveley Newsagency
Cnr Millhouse Rd & Egerton Dr
- Aveley Shopping Centre**
Cnr Millhouse Rd & Egerton Dr
- BASSEDEAN:**
Bassendean Library
46 Old Perth Rd
- Bassendean Shopping Village**
Cnr West & Old Perth Rd
- BEECHBORO:**
Beechboro Library
332 Benara Rd
- BOYA:**
Boya Community Centre
Clayton Rd & Scott St
- BULLSBROOK:**
Kingsford Village S/Centre
Woolworths
Spitfire St & Wylde Blvd
- CHIDLOW:**
Chidlow Growers Market
570 Rosedale Rd
- Chidlow Postal & Home Centre**
Thomas St
- DARLINGTON:**
Darlington Liquor
4 Montrose Ave
- EDEN HILL:**
Eden Hill News & LPO
S3/85 Walter Rd
- ELLENBROOK:**
Dome
36 Main Street
- Ellenbrook Central**
204 Pinaster Rd (cnr The Promenade)
- Woodlake Village IGA**
Sunray Circle
- FORRESTFIELD:**
Edinburgh Road S/Centre
Edinburgh Rd
- Forrestfield Forum**
20 Strelitzia Ave
- Walridge Country Estate**
Berkshire Rd
- GIDGEGANNUP:**
Gidgegannup News
Toodyay Rd
- GLEN FORREST:**
Glen Forrest Post Office
Railway Pde
- IGA Glen Forrest**
Harley Rd
- HELENA VALLEY:**
Helena Valley Lifestyle Village
2340 Helena Valley Rd
- IGA Helena Valley**
Torquata Blvd
- HERNE HILL:**
Herne Hill Village Lottery Centre
777 Gt Northern Hwy
- Swan Settlers Market**
124 Lennard St
- HIGH WYCOMBE:**
High Wycombe Village Shopping
Kalamunda Rd
- Newburn Newsagency**
47 Newburn Rd
- The Village Supa IGA**
120 Wittenoom St
- KALAMUNDA:**
City of Kalamunda
Railway Rd
- Crabbs IGA**
12 Canning Road
- Kalamunda Centro S/Centre**
39 Railway Rd
- Kalamunda Library**
7 Williams St
- Kalamunda Newsagency**
Haynes St
- Nightingales Pharmacy**
123 Canning Rd
- Jack Healey Centre**
21 Mead St
- KOONGAMIA:**
Koongamia Store
5/21 Jinda Rd
- LESMURDIE:**
IGA Lesmurdie
241 Lesmurdie Rd
- Sanderson Road S/Centre**
Sanderson Rd
- MAHOGANY CREEK:**
Begonia Pets
5895 Great Eastern Hwy
- MAIDA VALE:**
Hill View Public Golf Course
350 Kalamunda Rd
- Maida Vale IGA**
Unit 2/31 Maida Vale Rd
- MIDLAND:**
Baptistcare
1A North St
- Centrepoint S/Centre**
307 Great Eastern Hwy
- City of Swan Admin. Office**
Morrison Rd
- Crooked Spire**
71 Victoria Street
- Echo News Office**
4/9 The Avenue
- Greg's Discount Drug Store**
243 Great Eastern Hwy
- IGA Supermarket**
295 Great Eastern Hwy
- Midland Library**
45 Helena Street
- Midland Gate S/Centre**
Food Hall Entry
- Real Estate Plus**
Shop 2/5 Junction Parade
- Swan Valley Fresh Markets**
Cnr Morrison Rd & Keane St
- Tania Lawrence Office**
2/257 Gt Eastern Hwy
- The Ritz Cafe**
16/27 Old Great Northern Hwy
- MT HELENA:**
IGA Mt Helena
McVicar Pl
- MUNDARING:**
Brookwood Realty
2/1 Mundaring Weir Rd
- Coles Supermarket**
Great Eastern Hwy
- Hills Fresh**
7110 Great Eastern Hwy
- Hills Seafood**
4 Wandeara Cres
- Mundaring Newsagency**
7295 Great Eastern Hwy
- Mundaring Village Shopping Centre**
7295 Great Eastern Hwy
- Mundaring Visitors Centre**
7225 Great Eastern Hwy
- Shire of Mundaring**
7000 Great Eastern Hwy
- PARKERVILLE:**
Parkerville General Store
2170 Seaborne St
- SAWYERS VALLEY:**
Atlas Fuel
10895 Great Eastern Hwy
- Caltex Service Station**
96 Great Eastern Hwy
- SOUTH GUILDFORD:**
IGA Waterhall
9 Waterhall Rd
- STONEVILLE:**
Stoneville Fresh Food Market
5345 Richardson Rd
- STRATTON:**
Stratton Park S/Centre
O'Connor Rd
- SWAN VIEW:**
IGA Swan View
139 Morrison Rd
- Swan View S/Centre**
Marlboro Rd
- THE LAKES**
The Lakes Roadhouse
Great Eastern Highway
- UPPER SWAN:**
Vibe Roadhouse
1447 Great Northern Hwy
- WOOROLOO:**
Wooroloo Liquor & General Store
3775 Government Rd
- YORK:**
York Co-op
Avon Terrace
- Castle Hotel**
Avon Terrace

Connect with us



Sign up to our FREE monthly e-news by scanning the QR code.

kalamunda.wa.gov.au/newsletters

Stay connected through socials.

@cityofkalamunda



Kalamunda View

News from your City | June 2026



Mayor's MESSAGE

The start of the month brings in Makuru, along with cooler, wetter weather across the hills.

After last weekend's wild weather, it's clear that storm season is well and truly here, so now's a great time to make sure you're prepared and that your alerts and notifications are up to date.

With Makuru underway, we've also moved into the Burning Permitted period. This is a good opportunity to get your property bushfire ready. While permits aren't required, please be mindful and only burn dry garden waste to minimise smoke. It's best to wait a couple of days after rain, or keep materials dry, to ensure a cleaner burn. And if you can, please make use of your green waste skips instead.

Preparations are underway for the 2026/2027 budget, and like many other local governments, our budget has been prepared during a time of global and local financial pressures and challenges. The City has issued its notice of intention to levy differential rates, which is now open for public comment. We understand many households are doing it tough, and we really encourage you to have your say by Thursday 18 June at engage.kalamunda.wa.gov.au/rates-2026-27.

Winter is a magical time in Kalamunda and the hills really do come to life. We are proud to launch our winter campaign, Winter Elevated, under our flagship tourism brand Experience Perth Hills. The campaign is targeted at boosting visitors to our region and showcases the Perth Hills as the winter playground of Perth.

Stay warm, stay safe, and I look forward to seeing you out and about in the beautiful City of Kalamunda.

Mayor Margaret Thomas JP



Burning Permitted

1 June - 30 September

No permits are required. Make sure you check weather conditions, have a water source ready, maintain firebreaks and notify neighbours, and stay with the fire until extinguished.

UNLEASHING INNOVATION PAWS UP FOR COMMUNITY DOG PARK



The City of Kalamunda has taken the top prize at the 2026 Local Government Minister's Place Innovation Award (Metro/Peel) for its Wattle Grove Community Dog Park project – a vibrant, community-led space shaped by local residents Naomi, Sandy and Michael, Wattle Grove Town Team & Town Team Movement.

Delivered through a new place-based approach, the project showcases the power of community collaboration as a model for innovative, people-focused public spaces.



KALAMUNDA ART AWARDS OPENING NIGHT & EXHIBITION

The City of Kalamunda is proud to present the 2026 Art Awards, a celebration of creativity, talent and artistic excellence across Western Australia.

This supportive exhibition showcases a diverse range of multi-disciplinary artworks while providing artists with the opportunity to exhibit their work and compete for a range of art prizes.

- Opening night: 6pm, Saturday 6 June 2026
- Exhibition Dates: Saturday 6 June - Sunday 28 June 2026.

Zig Zag Gallery, 50 Railway Road, Kalamunda



ROUNDAABOUT UPDATE ELIZABETH STREET & RAILWAY ROAD

A safer new roundabout is taking shape, funded by a \$685,000 Black Spot Program grant to improve safety and reduce accidents at the intersection of Elizabeth Street & Railway Road.

The roundabout is now operational, with mountable concrete aprons installed to slow vehicles and prevent motorists from driving straight through, while still allowing larger vehicles such as buses and trucks to safely navigate through the intersection.

As we all adjust to the new layout, motorists are asked to slow down and approach with caution, and remain considerate of other road users, including heavy vehicles and buses.



HAVE YOUR SAY: RATES OBJECTS & REASONS

In accordance with Sections 6.33 & 6.36 of the *Local Government Act 1995* and the Council's intention to continue levying differential rates for the 2026/2027 Financial Year.

Scan the QR code to have your say.

**Comments close 5pm
Thursday 18 June 2026.**



Have Your Say

Join the conversation and contribute to matters happening in your City.

Scan the QR code for more or visit engage.kalamunda.wa.gov.au

Public Agenda Briefing Forum
6:30pm, Tuesday 9 June
Ordinary Council Meeting
6:30pm, Tuesday 23 June
 Administration Centre, Council Chambers
 Visit kalamunda.wa.gov.au to view the Agenda

Burning Permitted
1 June 2026 – 30 September 2026
 During this period no permits are required. Conditions apply.

Contact Us
 9257 9999 | enquiries@kalamunda.wa.gov.au
 2 Railway Road, Kalamunda
 PO Box 42 Kalamunda WA 6926



'Doing it for Pop': Lesmurdie boy raises more than \$10k for Dementia Australia

DANIEL HOLMES

A LESMURDIE primary school student has raised more than \$10,000 for Dementia Australia after completing the HBF Run for a Reason in honour of his grandfather's battle with vascular dementia.

Ten-year-old Xavier Foster, a Year 5 student at Walliston Primary School, raised \$10,699 through his 'Doing it for Pop' campaign and finished as the top individual fundraiser for Dementia Australia and the third-highest individual fundraiser overall at this year's event.

Xavier's grandfather was diagnosed with vascular dementia three years ago and entered aged care earlier this year.

Despite the progression of the disease, Xavier's mother Courtney Foster said her son remained determined to support his grandfather and help other families affected by dementia.

"Pop and I have always been good mates," Xavier said.

Growing up he spent time with his grandfather on the family's farm near New Norcia, helping with vegetable gardens, setting yabby traps and learning about life on the land.

As the pair's relationship changed with his grandfather's illness, Xavier decided to dedicate his fundraising efforts to him.

On race day, he started the 3km run with almost \$9,600 already raised and hoped to reach the \$10,000 milestone.

After crossing the finish line, he discovered an anonymous donor had contributed \$600, pushing his fundraising total beyond his goal.

But rather than celebrate the achievement, his first thought was for his grandfather.

"Would this help Pop?" Xavier asked.

Mrs Foster said that moment summed up her son's motivation throughout the campaign.

"What makes me most proud of Xavier is his genuine kindness and concern for the world around him," she said.

"When he saw an opportunity to help, he didn't do it for recognition or praise – he simply wanted to make a difference."

Xavier said the event was memorable not only because of the money raised but because of the people he met along



Above: Courtney Foster says she is proud of her son Xavier's fundraising efforts, which raised more than \$10,000 for Dementia Australia. Right: Lesmurdie 10-year-old Xavier Foster was the top individual fundraiser for Dementia Australia at this year's HBF Run for a Reason.

the way.

"My favourite part about the event was seeing all the people running for someone special in their lives and seeing all the happy faces," he said.

"Running for my Pop made it extra special to me."

Mrs Foster said Xavier's efforts showed how one person could make a meaningful difference.

"His desire to help others, simply because it was the right thing to do, is what makes me so incredibly proud," she said. "Demonstrating that with a big heart can make a big difference."

Donations can still be made via Xavier's fundraising page <https://runforareason26.grassrootz.com/dementia/xavier-doing-it-for-pop>

Thieves target fire brigade trailer

DANIEL HOLMES

MEMBERS of the Parkerville Volunteer Bush Fire Brigade are appealing for information after thieves stole the axle and suspension from the brigade's new illuminated sign trailer.

The brigade said the trailer, purchased with support from Bendigo Bank Mundaring, had been intended to communicate fire safety information, community updates and other important local notices.

In a social media post, the brigade described the theft as "disappointing" and said the loss had left volunteers unable to use the resource.

"We are reaching out with a heavy heart," the brigade wrote.

The brigade said the trailer represented its commitment to protecting and supporting the local community and the theft would make the work of volunteers more difficult.

Volunteers are now urging anyone who may have witnessed suspicious activity or has information about the incident to contact the brigade or local authorities.

The brigade thanked the community for its ongoing support and called for community resources to be respected and protected.



The damaged Parkerville Volunteer Bush Fire Brigade sign trailer.

McDonald's commences Kalamunda construction

MCDONALD'S has started construction on a new restaurant in Kalamunda which the company says will inject more than \$10 million into the local economy and create more than 100 jobs for local construction workers and restaurant employees.

Once opened, Macca's Kalamunda will operate from 5.30am to 11.30pm, seven days a week.

The new restaurant will be fitted with modern decor and feature a dual lane drive through, dedicated partner delivery room, McCafé and Play-Place for customers to enjoy.

McDonald's WA regional director Brendon McPhail said McDonald's Kalamunda was committed to playing an active role in the local community through providing jobs, training and development opportunities, as well as supporting local causes and groups that are important to our customers and people.

"We look forward to serving up our great taste-



Artist's impression of the new Kalamunda store.

ing, great quality menu once the restaurant opens later this year," he said.

The new store will be located at the corner of Heath and Canning Road, Kalamunda.

KIMBO'S Fashions
MIDLAND & WILLETTON

NEW WINTER STOCK
NEW WINTER STOCK
NEW WINTER STOCK

GIFT
VOUCHERS
AVAILABLE

Come
say Hi, we
would love
to see you!

WE SHOWCASE
OUR FASHION TO
RETIREMENT VILLAGES
Enquire today!

You can find us at

MIDLAND 9274 0429
1 OLD GREAT NORTHERN HWY | OPEN 6 DAYS

WILLETTON 9259 1698
UNIT 2 / 11 AUGUSTA STREET | OPEN 6 DAYS

Like us on Facebook

ADVERTISING FEATURE
WHAT'S HAPPENING

Perth Airport's New Runway is Taking Shape

Perth Airport is building a new runway. Construction commenced in 2025 and is expected to be operational in 2028. The new runway will increase airport capacity and improve operational efficiency for airlines operating at the airport.

The new runway will require new flight paths and may change aircraft noise in some areas.

In 2018, Perth Airport released a Major Development Plan (MDP) for the new runway, including indicative flight path corridors to assess impacts. The MDP underwent a 12-week public comment period and was approved by the Federal Minister for Infrastructure in November 2020.

Building on the MDP's flight path corridors, Airservices Australia is engaging with the community to develop the final flight path design. Multiple engagement rounds will occur between 2026 and 2028 in accordance with the Airservices Community Engagement Standard (Level 1 – most complex proposals).



Artist impression of the new runway (on left), facing south. Image courtesy of Perth Airport.

Airservices is now seeking community feedback to help shape its engagement approach.

Please visit engage.airservicesaustralia.com/perth for more details and to provide feedback on Airservices' Community Engagement Plan. Feedback is open until Friday 3 July 2026.

Winter at Amaroo: Because Hibernation is Overrated

With household budgets feeling the winter chill, we believe great food, memorable experiences and a reason to leave the house shouldn't be luxury items. That's why we've kept our prices steady and introduced a range of affordable events designed to warm both hearts and wallets this season.

Channel your inner Picasso (or at least have a good laugh trying) at our Art & Lunch experiences on 20 June and 25 July. For \$135, you'll enjoy a guided art session, lunch and the opportunity to discover that painting wine glasses is considerably easier after a wine.

Our indulgent High Tea returns on 27 June and 11 July for \$79. Expect delicate treats, cocktails and endless tea and absolutely no judgement if you start with dessert.

For those who think winter and slow-cooked, fire-kissed food belong together, Fire & Feast on 4 July is not to be missed. At \$70 per person, enjoy premium meats, smoky flavours and an evening



built around great food, good company and crackling fires.

Can't wait until the weekend? Every Thursday, our chefs take control with the Feed Me Menu. For \$69, simply sit down, relax and let the kitchen make all of life's important decisions for you.

Book now and discover why winter is far more enjoyable when someone else is cooking.

Amaroo Retreat & Spa | Mount Helena | (08) 6244 4800 | amarooretreat.com.au

Perth Airport new runway flight paths

Perth's new parallel runway will require new flight paths.



Community engagement has commenced, visit our website for more information.

Scan the QR code to learn more, share your feedback and to subscribe for updates:



engage.airservicesaustralia.com/perth

communityengagement@airservicesaustralia.com

PO Box 1093, Tullamarine VIC 3043

airservicesaustralia.com



Winter events at Amaroo Retreat & Spa
Book in now to avoid disappointment!



June 20 | July 25 | August 22

Art & Lunch Experience

Unleash your inner artist! Craft your very own masterpiece then settle in for a delicious two-course lunch.

Tickets available online now:

\$135 per person

Art session kicks off at 10:30am and flows through to 11:45am



June 27 | July 11

High Tea in the Hills

A luxurious afternoon experience blending decadent flavours, sparkling wine and bushland serenity.

Bookings essential.

\$79pp – includes all food, one drink & hot beverage.

\$114pp – includes all food, unlimited drinks & hot beverage for 2 hours



July 4

Fire & Feast

Enjoy premium meats, smoky flavours and an evening built around great food, good company and crackling fires.

Bookings essential.

\$70 per person



THURSDAY'S ONLY

Feed Me
A shared dining experience

House made focaccia, olive oil DF/NF
 Chargrilled octopus, chorizo, potato, citrus GF/NF/DF
 Crispy pork belly, gochujang, sweetcorn GFO/NF/DF
 WA Donnybrook Pink Sirloin steak, peppercorn sauce, watercress GF/NF/DFO
 Sous vide chicken breast, ricotta & lemon myrtle, garlic cream sauce, mash GF/NF
 Amaroo salad, ranch dressing, pickled onion GF/NF/VGO
 Shoestring fries, aioli GF/NF/DF/VG
 Chocolate mousse, cherries, flourless chocolate cake, crystallised chocolate V/NF/GF
 Peach Compote, polenta sponge, whipped crème fraiche GF/V

Bookings essential.

\$69 per person



See our website for further details
amarooretreat.com.au
 1200 Alison Street, Mount Helena

BOOKINGS ESSENTIAL / Limited availability
(08) 6244 4800
reservations@amarooretreat.com.au

ARTS ENTERTAINMENT

Jessie Radloff art exhibition opens

MIKE PEETERS

GUILDFORD based artist Jessie Radloff's new exhibition is now open at the Talkie Tearooms in Midland until the end of June.

Ms Radloff's paintings explore her love of dogs and aims to capture their personalities and likeness in a quirky and original way.

This passion led Jessie to create her own business called 'Jessie and Her Dogs' where she sells clothing, home goods, cards and other products with her designs on them.

She also creates custom commission pieces for people who want artwork of their dogs in her unique style.

The 27-year-old has won awards for her designs including the As We Are Judges high commendation in 2022 and the Soroptimist International art award in 2023.

In 2025 Ms Radloff showcased her work at the Swan Open Studios and connected with the community at the Beechboro Library.

She also exhibits at the Kalamunda Artisan Markets on the first Saturday of each month.

The Talkie Tearooms are part of the historic Midland Town Hall with artworks curated by the City of Swan and the Midland Junction Arts Centre.



Jessie Radloff with one of her artworks.

Cat adoption day hosted in Midland

A CAT adoption day hosted by Perth Rescue Angels this Saturday, will give members of the public an opportunity to meet and adopt cats and kittens currently in need of rescuing.

The Western Australian not-for-profit charity operates a dedicated foster care and adoption network designed to rehabilitate homeless, neglected, surrendered, and abused animals.

The four-hour event takes place on Saturday, June 6 from 10am to 2pm at Better Pets and Gardens, located at 8 Clayton Street, Midland featuring a wide variety of cats looking for permanent homes.

On-site adoption applications will be available for submission on the day, and prospective owners must present photo identification and provide a secure cat carrier to adopt.

Charity volunteers will be present to assist visitors with the necessary paperwork and offer guidance on the specific care requirements.

The event aims to secure permanent homes for the animals, which will help the charity rescue more at-risk cats.



Attendees looking to adopt a family member are asked to bring a cat carrier and some photo identification.

For more information about the event visit www.facebook.com/perthrescueangels

Visit www.perthrescueangels.org for

details on how to apply to become a temporary foster carer or to adopt and support the organisation's critical operations.

Kalamunda arts and crafts exhibition

THE Kalamunda Arts Districts and Crafts are holding their Art and Craft Exhibition and sale at the Kalamunda Agricultural Hall at 48 Canning Road.

The exhibition and sale is on from 10am to 4pm on June 13 and will feature an array of art and handmade items, crafted by artists and artisans from the Perth Hills and surrounds.

Visitors are invited to appreciate the artistic creations and meet the artisans while enjoying a day in the hills.

The show will offer original art, prints and dynamic oil and watercolour masterpieces, and photographs of flora and fauna.

There will be hand woven wall hangings and plant hangers to decorate walls, as well as plants and hand painted pots for the patio.

Visitors can find items made from hand spun wool, alongside woollen and hand felted clothing and hand-woven items.

Other hand-crafted items include silk scarves, fashion and accessories, and jewellery.

Handmade homewares and décor such as quilted items, embroidery, handbags, aprons, placemats, greeting cards, soaps and candles will be available too.

Also featured will be an array of wood crafted boards and furniture, pottery, mosaics, leatherwork, hand crafted ceramic garden items and iron work.



Handmade arts and crafts will be on show and for purchase at the exhibition.

ENTERTAINMENT & GIG GUIDE

Your local Gig Guide

Fri June 5

Woodbridge Hotel
Jamm'n
From 8pm, Free
50 East St, Guildford

Parkerville Tavern
Andy Pearce
From 5.30pm, Free
6 Owen Road
Parkerville

Mahogany Inn & Distillery
TJ O'Donovan
6pm-9pm, Free
4260 Great Eastern Hwy
Mahogany Creek

Lyric's Bar
Crash Creole
From 7pm, Free
22 Lyric Lane
Maylands

Sat June 6

Settlers House York
Nick Childs
From 5.30pm, Free
125 Avon Terrace, York

Woodbridge Hotel
Breezin
From 8pm, Free
50 East St, Guildford

Parkerville Tavern
Dave Cooper
From 3pm, Free
6 Owen Road
Parkerville

Lyric's Bar
Furniture
From 7pm, Free
22 Lyric Lane
Maylands

Mahogany Inn & Distillery
Neil Adams
6pm-9pm, Free
4260 Great Eastern Hwy
Mahogany Creek

Sun June 7

Settlers House York
Lez Karski
12pm-3pm, Free
125 Avon Terrace York

Parkerville Tavern
Leslie Hinton
Entertainment
From 3pm, Free
6 Owen Road
Parkerville

Sun June 7 Cont.

Woodbridge Hotel
Cillian Gearney
From 3pm, Free
50 East St, Guildford

Chidlow Tavern
Sunday Jam Session
12.30pm-3.30pm, Free
4 Thomas St Chidlow

Mahogany Inn & Distillery
Brett Hardwick
4pm-7pm, Free
4260 Great Eastern Hwy
Mahogany Creek

Tues June 9

Mahogany Inn & Distillery
Smooth Groove
6pm-8.30pm, Free
4260 Great Eastern Hwy
Mahogany Creek

Woodbridge Hotel
Ravenswing
From 6pm, Free
50 East St, Guildford

Wed June 10

Chidlow Tavern
Muso Jam Night
7pm till late, Free
4 Thomas St, Chidlow

Mahogany Inn & Distillery
Acoustic Open
Mic Night
Presented by Fenton
and Friends
6pm-9pm, Free
4260 Great Eastern Hwy
Mahogany Creek

Thur June 11

Mahogany Inn & Distillery
Neil Adams
5.30pm-8.30pm, Free
4260 Great Eastern Hwy
Mahogany Creek

Woodbridge Hotel
The Stumblers
From 6pm, Free
50 East St, Guildford

Promote your event



SCAN ME
ENTERTAINMENT
& GIG GUIDE

OPTION 1 Large Display Banner

Linking directly to your website or ticketing outlet. \$100 p/w

OPTION 2 Half Display Banner

Linking directly to your website or ticketing outlet. \$50 p/w

OPTION 3 Free Text Listing

Contact Peter for more information
on 9374 6605 or peter.lewis@echo-news.com

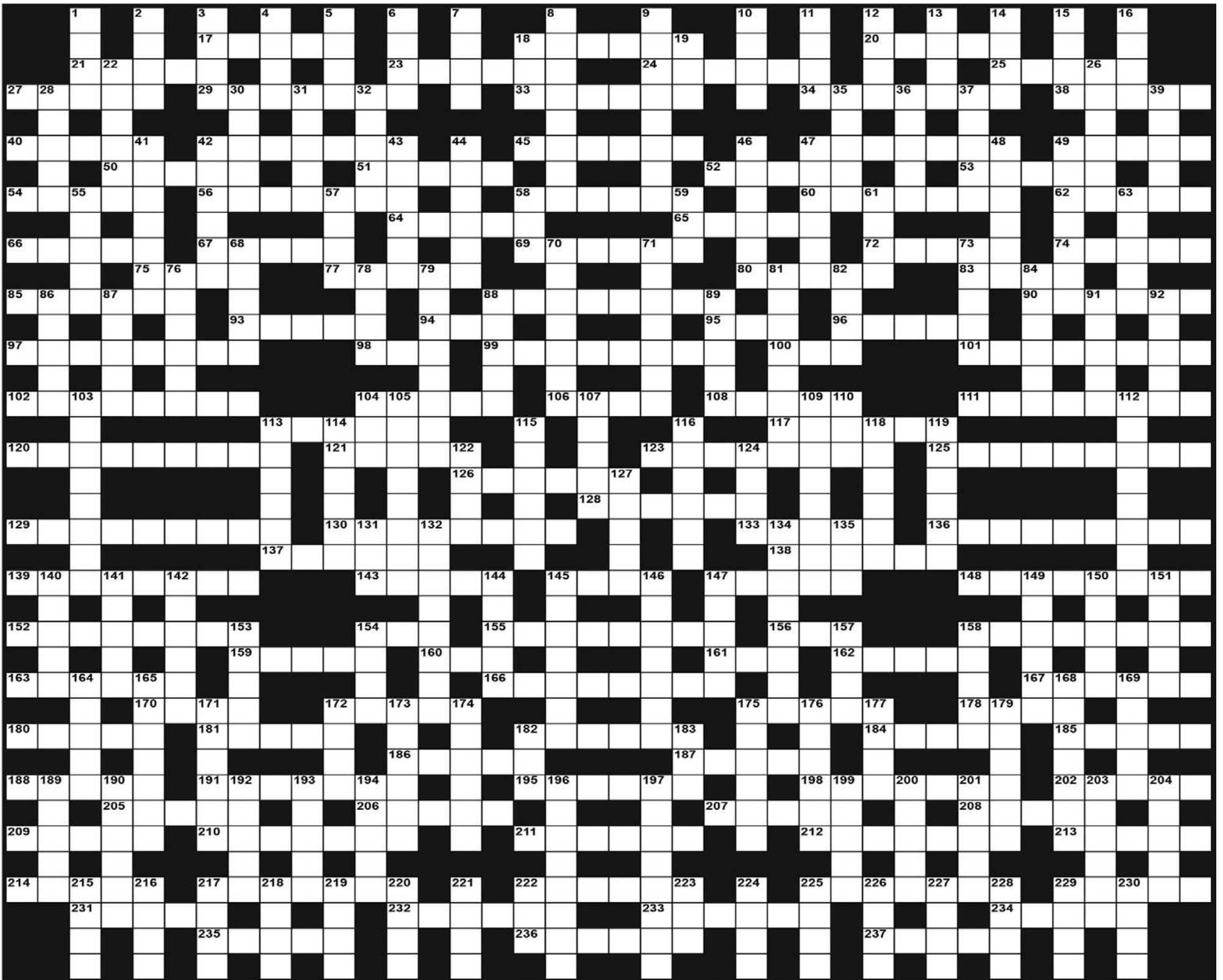
www.echonewspaper.com.au

ECHO NEWS



Mind Boggler Crossword

1271



ACROSS

- 17 Ease off
- 18 Not long ago
- 20 Don't enforce
- 21 Rough plan
- 23 Choice
- 24 Salad vegetable
- 25 Arm support
- 27 Thief
- 29 Parliamentarian
- 33 Dry area
- 34 Wishes for
- 38 Sample
- 40 A hard resin
- 42 Mail deliverers
- 45 Mooring area
- 47 Figures of speech
- 49 Last game
- 50 Pierces with horns
- 51 Mature
- 52 Send money
- 53 Consumed
- 54 Precipitous
- 56 Most expensive
- 58 Fireplace guard
- 60 Annoys
- 62 Lease land
- 64 Petty
- 65 Remove from position
- 66 Emblem
- 67 Made a mistake
- 69 Impelled forward
- 72 Old weapon
- 74 Loosen
- 75 Unusual
- 77 Types
- 80 Finished
- 83 Employer
- 85 Over
- 88 Being in main role
- 90 Smooth and slender
- 93 Annoyed
- 94 A drink
- 95 A vase

- 96 Speak with difficulty
- 97 When not working
- 98 Total
- 99 Typesetters
- 100 Girl's name
- 101 Give to a cause
- 102 Cushion for the head
- 104 Vends
- 106 Courage
- 108 Small wild cat
- 111 Kept for emergency
- 113 A march
- 117 Rescuing
- 120 Englishman (coll)
- 121 Keep away from
- 123 Makes lesser
- 125 Went in again
- 126 Soft
- 128 Show clearly
- 129 Holding in check
- 130 Splashing wildly
- 133 Outlaid
- 136 Time of darkness
- 137 Elephant trainer
- 138 Deleted
- 139 Keenly
- 143 Old rulers
- 145 Playthings
- 147 Verse in general
- 148 Very good
- 152 Plains turkeys
- 154 Rough cabin
- 155 Huge area
- 156 Well down
- 158 Be overbearing
- 159 Equine animal
- 160 Sheltered side
- 161 Supplement
- 162 Give opinion
- 163 Take back
- 166 Light footwear
- 167 In preference
- 170 Timid

- 172 Over-bold
- 175 A willow
- 178 This month
- 180 Bend over
- 181 Grass plant
- 182 Leering at
- 184 Give a speech
- 185 Legal decree
- 186 Put on show
- 187 Following
- 188 Organic part in soil
- 191 Attack
- 195 Speaks lazily
- 198 Combed upward
- 202 Metrical stress
- 205 Under
- 206 Patronage
- 207 Silk fabric
- 208 Allude to
- 209 Breeding places
- 210 Small eagles
- 211 Be against
- 212 A newspaper
- 213 Speedy
- 214 Downpours
- 217 Ate lavishly
- 222 Better ventilated
- 225 Cupboards
- 229 Littered
- 231 Go away
- 232 Spin around
- 233 Plant juice
- 234 Near
- 235 Place of oblivion
- 236 Levelled off
- 237 A fruit

DOWN

- 1 Was aboard
- 2 Spoken
- 3 Clubs
- 4 Gape
- 5 Tidy
- 6 Anchor

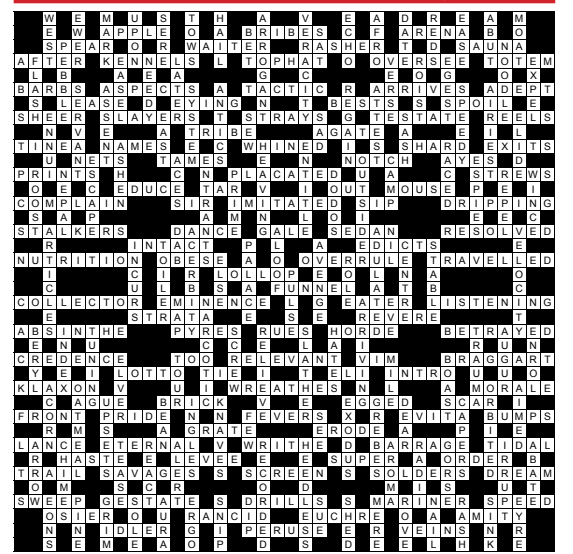
- 7 Deeds
- 8 Outlaw
- 9 Way in
- 10 Ardour
- 11 Timber
- 12 Sheep
- 13 Untruthful person
- 14 Not so many
- 15 Check copy
- 16 Floor covers
- 18 A bar
- 19 Small drink
- 22 Treat savagely
- 26 Giving a title
- 28 Type of fish
- 30 Irregularly notched
- 31 Rose oil
- 32 Bowling spells
- 35 Top class
- 36 Foolish person
- 37 Arab leader
- 39 Snares
- 41 Tree trimmers
- 42 Australian dam
- 43 Poser
- 44 Wrong
- 46 Fame
- 47 Drank lightly
- 48 Bands
- 49 Stand-out piece
- 55 Senior
- 57 Final parts
- 58 Gave food to
- 59 Hurry
- 61 Exchanged for money
- 63 A fibre
- 68 Musical skit
- 70 Bellowing
- 71 Outstanding
- 73 Fixed up
- 76 Hope to reach
- 78 Fragments
- 79 Stood on heavily
- 81 Foolishness

- 82 A sword
- 84 Musical pieces
- 86 Evergreen tree
- 87 Possessed
- 88 Groups in clans
- 89 Vigour
- 91 Speed competitor
- 92 Pay one-tenth
- 103 Put in groups
- 104 A sausage (abb)
- 105 Voracious
- 107 Stormed
- 109 Baseball players
- 110 Day before
- 112 Showed truth of
- 113 Due to a cold
- 114 Enjoy greatly
- 115 Of dogs
- 116 Go back
- 118 Small islands
- 119 Earth
- 122 Carve
- 124 Is recumbent
- 127 Prepared
- 131 Fortune
- 132 Frightens
- 134 Without equal
- 135 A vote against
- 140 A cosmetic
- 141 Something more
- 142 Royal seat
- 144 Sets aside
- 145 Trying out
- 146 Illicit liquor shop
- 147 Ways of standing
- 149 Nocturnal primates
- 150 Group of nine
- 151 Girl's name
- 153 Tremble with emotion
- 154 Listen to
- 157 Meshed
- 158 Amount owing
- 164 Rub down horses
- 165 Intrudes on another

- 168 A studio
- 169 Lift high
- 171 Large grounds
- 172 One courting
- 173 Stones
- 174 Inner body tear
- 175 Ocean mammals
- 176 Burst inwardly
- 177 Steals
- 179 Cleared
- 182 Strange
- 183 Used in warfare
- 189 Extreme
- 190 Not completed
- 192 An outline
- 193 Book of maps
- 194 Turning machine
- 196 Give pardon to
- 197 Heard
- 199 Ocean gem

- 200 Water storages
- 201 Copy of photo
- 203 Wants badly
- 204 Essential parts
- 215 Holly shrub
- 216 Identical
- 217 Touched
- 218 Body parts
- 219 Slow run
- 220 Pull along
- 221 Small piece
- 222 Dined
- 223 A colour
- 224 Sore on eye
- 225 Cut short
- 226 Electrical units
- 227 Historic periods
- 228 Flat boat
- 229 Biggest amount
- 230 Post off

Crossword Solution 1270 from 29 May, 2026



ECHO Trades & Services

9374 6666
classifieds@echo-news.com
www.echonepaper.com.au

Bobcats

BOBCAT - TRUCK EXCAVATOR ROCKBREAKER

- Bobcat works, Earthworks & Truck Hire
- Driveways - Removals / Prep / Construct
- Excavation / Trenches / Drainage / Soakwells
- Shed & Tank Pads / Rockbreaking & more ...

Reliable Service **DAVE 0417 096 614**
DW Cartage & Earthworks

MIDLAND BOBCAT HIRE

BOBCATS, 8 & 12 TON TIPPERS, MINI EXCAVATORS

Free no obligation quotes and advice

Russell & Lynn Edwards
Owner/Operator

Russell: 0417 957 597
russlynn4@bigpond.com

Brickpaving

BRICKLAYER

Over 30 years experience
Small to larger jobs
Builders reference

0432 042 631
Phone Dudley

Carpentry

CARPENTER/CABINET MAKER

Sash Window Repairs / Renovations, Kitchens, Laundries, Robes & Vanities made and fitted. Doors, Frames & Architraves. Skirting & Shelving. 40 years experience.

NO JOB TOO SMALL. Call Terry
0401 743 027 / 9295 0797
telcocarpentry@bigpond.com

Carpentry * Joinery * Cabinetmaking and Home Maintenance Services

- Doors * Decks * Skirting * Sash Windows
- Robes * Kitchen Installations
- Flatpaks * Pergolas * Furniture Repairs

Pensioners Discount Fully Qualified Free Quote
Call Mal 0400 250 761

MORGAN CARPENTRY & MAINTENANCE SERVICES

ALL ASPECTS OF CARPENTRY & MAINTENANCE WORK

- 15yrs commercial & residential experience • Insured
- Fully qualified, professional & reliable • No call out fee
- Full police clearance • Pensioners discount

Call Kevin **0450 538 596**
www.morgancarpentry.com.au e:kdd.morgan@hotmail.com

Ceilings

CA INSTALLATIONS

- Ceilings & Walls • All Facets of Ceiling Work
- Domestic & Commercial • Office Partitioning

All Reno Work Local and Loyal
0409 953 369

CEILING & WALL RESTORATION

ALL SMALL JOBS
ALL REPAIRS & NEW ADDITIONS
23 YEARS EXPERIENCE

9295 2041 OR 0402 270 688

Concrete

TIGER CONCRETE

FREE QUOTES • NO MESS NO FUSS
Quality work, all types of concreting

Bobcat and Truck
Mike 0407 989 927

B.C. CONCRETE DESIGN

Cracked Pea Gravel/Exposed Aggregate
Crossovers • Shed Floors • Drives
House Extensions • Patios

Bobcat & Truck
Call Anytime **0457 611 348**

SUNJICH'S CONCRETE

- Bobcat - Truck and Compaction
- From Prep to Completion

FREE Quotes All Areas
Call Zeljko
0417 902 301

Electrical

Andrews Electrical Systems Pty Ltd
Established 25 years • High Quality Guaranteed

- Residential ✓ Electrical Installations
- Commercial ✓ Electrical Maintenance
- Industrial ✓ Air Conditioning
- ✓ Telephone and TV
- ✓ CCTV and Data

Call Andrew **0420 956 432**
Email: andrewsesperth@gmail.com

RUSHTON ELECTRICAL

0408 904 169

For all your electrical needs

- RCD Fault finding / electrical repairs
- Data • Phone
- Air Con Install
- No job too small

Mrs Fixit!

Female Electrical Contractor
Free Quotes & No Call Out Fees

TV / ANTENNAS • LIGHTS • POWER POINTS
SAFETY SWITCHES / RCD'S • SMOKE DETECTORS
REPAIR & MAINTENANCE • HOT WATER SYSTEMS

Seniors | Pensioners | HCC Discounts
MARDI GLADWELL 0430 035 345

Gardening

All Areas

FULL-BLOWN

Garden Maintenance
ABN: 77 592 171 029

- Rubbish Removal
- Mulching
- Lawn Mowing
- Planting ✓ Weeding
- Pruning ✓ Hedging
- Yard clean ups
- Ride on mowing
- Spraying
- Bush fire ready clean ups

FULLY INSURED
FREE QUOTES

Damien 0431 011 369
www.full-blowngarden.com

Handyman

- Fencing • Gutter Cleaning • Shelving
- Furniture Repairs • Painting • Tiling • Paving
- Carpentry • Property Maintenance
- High Pressure Cleaning

Almost anything - just ask!
Pensioners Discount Free Quote
Mal 0400 250 761

Limestone

Michael's Stonework

Service All areas

Limestone & Coffee Rock
Small Retaining Walls, Steps, Pillars, Stone Pitching, Garden Beds

For a FREE quote & reliable service call:
0427 190 273

Painting

Scott Howard
Painting Service
Reg. No. 4234

21 years experience
Touch-ups • Repaints • Residential & Commercial

- Free Quotes • Reliable Service
- Quality Workmanship

0409 299 452
38 Cupello Drive, Swan View

Pest Control

Mal's Pest & Weed Services

Free Quotes

- Serviceing the Hills and surround for 30 years
- Specialising in termite treatments & inspections

Call Sean **0417 905 708**

Plastering

EASTERN HILLS PLASTERING

ABN 69 373 874 693

All Aspects of Plastering - Concrete Skim
Coating - Acrylic Texture Finish - Renovations

30 YEARS EXPERIENCE FREE QUOTES
TONY 0406 675 211
easternhillsplastering@outlook.com

Plumbing

Hi I'm Local

In Your Area
Hot Water Expert



- Senior Discounts
- Upfront Pricing
- Fast Plumber
- Drains, Taps, Toilets

\$0 Call Out*

Plumbing Emergencies 24/7

6244 3226

*conditions apply PL9956

The Tap Doctor

FOR ALL PLUMBING & GAS

- Taps • Burst Pipes
- Toilets • Leak Detection
- Hot Water Systems • Blocked Drains

Call Today **1300 655 827**

Our Service Will Amaze You
www.thetapdoctor.com

LOCAL PLUMBER

PL9956

Same Day Service
Blocked Drain, Taps, Toilets
Burst Pipes, Hot Water

Same Day Emergencies 24hrs
9468 2581

NO CALL OUT* + SENIOR DISCOUNT
Your Best Local Plumber!

Local Plumber

Same Day Service
Hot Water Expert

- Upfront Prices
- Pensioners Save
- Drains, Taps, Toilets
- Burst Pipes, Gas

Emergency Plumbing 24hrs
6118 6368

PL9956 *conditions apply

Renovations

Specialising in minor home renovations

Remove-add-relocate walls, windows and doors.
Convert-add rooms. Replace-add-repair ceilings.

Call Jeff **0403 737 097**

Reticulation

Reticulation

0433 366 655

Roofing

YOUR LOCAL ROOF SPECIALIST

PROFESSIONAL SERVICE & REPAIRS

- METAL ROOFING | NEW AND REPLACEMENT
- GUTTERS & DOWNPIPES | NEW AND REPLACEMENT
- ROOF COATING AND RESTORATIONS
- MAINTENANCE
- LEAKS AND ROOF REPORTS

CONTACT PETE FOR A FREE QUOTE
9274 7663

sales@prowestroofing.com.au
prowestroofing.com.au

AMC ROOFING

Specialising in All Tiled Roofing
New Roofs
Maintenance & Repairs

Free Quotes - Aaron Carter
Mob: 0417 930 817

RIDGE CAP KING

TILED ROOF RESTORATIONS

0447 234 603

Call Kieren today for a free quote
admin@ridgecapking.com.au

AR Specialist Roofing

Solutions for all your roofing needs including

- roof restoration • gutters
- leaks • downpipes • sheeting
- custom flashings • roof cleaning
- PATIO BUILDING

Call Andrew
0408 192 021
arspecialistroofing@gmail.com

ROOF TILE REPAIRS

For all your Roof Tile Repairs
Contact David for a free quote on
0413 240 203 or 9255 4003

Specialising in: Leak Repairs • Gutter Clean
• Tiling • Re-ridging • Re-pointing

ASK ABOUT OUR GREAT PRICES FOR TRADES

Tree Services

TLC Tree Services has merged with
Payne's Tree Services

FREE QUOTES AND ADVICE

- MULCHING • LAND CLEARING
- STUMP GRINDING
- TREE LOPPING

Call Clint on **0455 132 014**
paynestreeservices.com.au

HILLS TREE SOLUTIONS

For all your Tree Lopping and Stumpgrinding Needs

- Locally owned & operated • Call 24/7
- Fully Insured • Cheapest Prices Guaranteed
- Horizon Power Accredited • Servicing All Areas

CALL 9295 6511 OR 0414 438 610

Helping people manage trees for over 30 years

CPD TREES


ARBORISTS

Michael Byrne Dip. Arboriculture
0411 750 342
www.cpdtrees.com.au
arborist@cpdtrees.com.au

Read between the lines

by Pastor Ian Kirk

Peace in the Storm



Last weekend we had some wild weather. I noticed on the Perth meteorological website that some weather stations had recorded gusts over 100kmh. The gusts in my area were too strong for my weather station. It broke my anemometer!

It reminded me of a time when we were on a cruise ship and the ship's anemometer stopped working. Before it did, I was observing wind speeds of over 170kmh. The reason for this is that our ship was in a typhoon on the South China sea.

But a broken anemometer on the ship was the least of our concerns. The ocean was tempestuous with over 10m seas. The ship was pitching and rolling so significantly that ceiling panels were falling down, chairs and tables were strewn across the floor, and even the grand piano had broken its restraints and was moving freely about. People were screaming - in fear. Some people even sprained joints and broke bones. It's the kind of experience you will never forget.

During this horrific ordeal, Colleen and I became quite anxious. But we prayed! A peace came over us, and instead of being worried, we were able to help others. The peace we enjoyed affirmed a promise in the Bible. Philippians 4:6-7 "Be anxious for nothing, but in everything by prayer and supplication with thanksgiving let your requests be made known to God, and the peace of God, which surpasses all comprehension, shall guard your hearts and your minds in Christ Jesus."

ECHO NEWS

Indemnity and Warranty

ECHO NEWSPAPER
CONDITIONS OF ACCEPTANCE

When an individual or other legal entity ("the Customer") requests Echo Newspaper ("Echo") to place an advertisement in this Newspaper, they agree to be bound by the following terms and conditions:

- Echo, at its sole discretion, may decline to publish any advertisement requested by a Customer. If Echo decides not to publish a particular advertisement, there is no obligation on Echo to disclose the reasons for its decision, and Echo will not be liable for any loss or damage occasioned to the Customer as a result of the decision.
- Echo will not be liable for any loss or damage caused to a Customer as a result of delay or as a result of Echo failing to place a requested advertisement or publishing an advertisement containing an error or omission.
- Echo may, at its sole discretion, decide to refund a Customer a portion of the cost of the advertisement if it forms the view that the error was not attributable to the Customer and the Customer notifies Echo of the error or omission before 5.00pm on the day the advertisement first appears in the Newspaper.
- Complaints concerning the accuracy of any invoice must be notified to Echo within 30 days from the end of the month in which the advertisement was published, after which time the Customer forfeits any rights it may have had to challenge the invoices.
- The Customer warrants that publication of the requested advertisement/s will not contravene any laws, whether statutory, equitable or otherwise, and agrees to wholly indemnify Echo (and its employees and agents) against all expenses, loss and damage arising directly or indirectly from the publication of the advertisement/s.

Looking for a tradie?
Now you can find a tradie in the paper AND on our website
ANYTIME GO TO
www.echonepaper.com.au

ECHO Classifieds

9374 6666
 classifieds@echo-news.com
 www.echonepaper.com.au

Ceiling Repairs
 New gyprock walls and ceilings. Repair old ceilings. Professional tradesman. Peter 0400 993 387.

Construction
 Galtee Concrete Pty Ltd
 Concrete placement and finish
 Form Reo and pour.
 Formwork carpentry.
 Brickwork, blockwork, stonework.
 Fully licenced and insured.
 Chris 0421 017 768

Custom Video & DVD Solutions
 Video Transfers to USB starting from \$45 - 6393 7298.

Electrician
 LITL Electrical
 All types of electrical work & air conditioning.
 Jeff Overton
 0483 858 603.
 EC14844

Firewood
 Firewood for sale. Dry Jarrah/Marri 6x6 cage load. Free Delivery. 0429 988 079.

For Rent
 Modern tree house Chalet style apartment for rent with amazing views in Perth Hills. Suit working person/s. Ref req. Ring 0411 445 190 for info.

Gardening
 Bilby's Garden Services
 Weed, Prune, Mow & Slash. Free Quotes 0416 855 335.

Ian Mac's whipper snipping, chain sawing and weeding. Small tree lopping jobs. 0426 211 137.

Gutter Cleaning
 Gutter cleaning & solar panel cleaning. Jason 0421 455 546.

Gutters vacuum cleaned from \$140 plus free roof inspection. Hills area since 2001. Call Brendan 0428 028 293.

Handyman
 WILLIS BUILDING & MAINTENANCE SERVICE
 Specialising in all house maintenance, pergolas, decking, verandas, painting and carpentry. 0487 093 355.

Hobby Farm Services
 Slashing, mowing, wool buying, firebreaks & property cleanups. Ian 0458 510 048.

Lawn Mowing
 Ride on mowing services in the Hills area. Ph 0400 365 887.

Painting
 Painting & Property Maintenance. 0477 660 703. Local.

Steve Gregory painting service. Mobile 0417 926 027. Reg # 5098.



Plumbing
 MASTERS PLUMBINGAS
 All Plumbing & Gas work, Blockages, Hot water units, Leaks, Renovations, Burst pipes. 24/7 Emergency Service. NO CALL OUT FEE David: 0416 644 191. PL-9554 GF-011284

Public Notice

PROPOSAL TO UPGRADE AN EXISTING MOBILE PHONE BASE STATION AT

Lot 384 Old Northam Road, CHIDLOW WA 6556
 (rear of Chidlow Recreation Ground)
 RFNSA Site Number: 6556001

- Telstra is proposing to upgrade an existing mobile phone base station located at the rear of the Chidlow Recreation Ground, Lot 384 Old Northam Road, CHIDLOW. The proposed upgrade will improve Telstra 4G and 5G services in the area.
- The proposed upgrade works on the existing lattice tower consist of:
 - Removal of three (3) existing antennas
 - Reconfiguration of six (6) existing antennas
 - Installation of three (3) new panel antennas (less than 1.1m in length)
 - Installation/replacement of ancillary equipment
 - Internal equipment room works
- In accordance with Section 7 of the Industry Code C564:2025 Mobile Phone Base Station Deployment, we invite you to make comments about the proposal.
- Please direct comments to Mark Baade (Planning Consultant) on mark@saqconsulting.com.au, 0417 088 000 or to SAQ Consulting, PO Box 50 Clayfield QLD 4011 by **Friday 19th June 2026.**

For more information about the proposal, scan the QR Code or visit www.rfnsa.com.au/6556001

Telstra Limited ACN: 086 174 781
 SAQ Consulting ACN: 627 531 926



Employment

ECHO NEWS
 Privately owned & proudly independent

The Echo Newspaper is looking to fill the following position

JUNIOR - ADVERTISING SALESPERSON

If you enjoy meeting new people and have an outgoing personality, then this is the job for you

We are a small, privately owned and independent newspaper looking for an energetic and vibrant person to join our team.

The successful applicant will have:

- A current "C" class drivers licence and reliable vehicle.
- A smart appearance with a strong commitment to customer service and the ability to develop and implement successful sales strategies, including digital, by building and maintaining long lasting client relationships.
- Strong negotiation verbal and written skills with excellent presentation and a professional phone manner is a must.

This position is Monday-Friday and offers a salary package, including a commission structure with a weekly car allowance.

Please email your resume with a cover letter to:
 General Manager / Editor Peter Lewis
 E: peter.lewis@echo-news.com
 All applications will be treated with the strictest confidence.

Regrouting
 Bathroom Regrouting. Call Andrew 0413 158 763.

Roof Repairs
 Roof leaks, gutter cleaning, solar panel cleaning, roof cleaning. 0421 455 546.



Solar Services
 Solar Panel Cleaning with Anti Mould & Solar Wax Treatment. 0421 455 546.



Wanted to Buy
 MEDALS and Militaria bought by genuine local collector top prices paid 0407 982 215.

Window Cleaning
 Tatania's Window Cleaning. Tracks. Frames & Fly screens. 0467 282 127.

Clean-View Window Cleaning. Domestic or commercial. 0497 111 676.



"LEGACY IS KEEPING THEIR PROMISE TO MY DAD"
 CHARLOTTE

TO DONATE, CALL 1800 534 229 OR VISIT LEGACY.COM.AU

ECHO NEWS

"Let's keep local people in work"

To advertise your situations vacant call 9374 6666.

Do you have something to Celebrate?

Why not announce it in the Echo? Call 9374 6666 to share your special news.

ECHO Notice Board

A free service for non-profit organisations
9374 6666
 editorial@echo-news.com

Upcoming Events

- Midland CWA** meets at the Midland Railway Yards Blacksmith Lane (West) Midland on the third Wednesday of each month at 10am. CWA flags are displayed on Yelverton Drive, Midland on meeting days. CWA offers a diverse range of interests and each branch works to meet local community needs. Call Cathy on 0460 777 557 or email cwa.midland@outlook.com
- Mahogany Creek Art and Craft Group** meets weekly on Wednesdays 9.30am to 12.30pm during school terms at the Mahogany Creek Hall on Jacoby Street. Everyone brings along their art or craft to work on in a friendly social group with tea and coffee provided. For more information call Mary on 0431 201 814 or Jan on 6279 4031.
- The Rosehill Ladies Golf Club** meets each Tuesday at 8am at Hillview Public Golf Club, Kalamunda Road, Maida Vale. The season runs from March to November. For more information call Roz on 0419 915 623 or Julia on 0419 954 106.
- The Kalamunda Lapidary Club** at 3 Recreation Road, Kalamunda is a club dedicated to collecting, polishing and creating jewellery from natural gem stones and Australian minerals and crystals which they collect in the field. They have an open day on the first Saturday of each month where possible with examples for sale. You can check their

- Facebook page for current events. For more information call Richard on 0422 181 200.
- Swan Guildford Historical Society** will host a talk exploring how DNA, geneology, and place based research can connect us to the present. The talk will be hosted at St Matthew's Hall, Stirling Square, Guildford on Monday June 8, at 7.30pm. The public speaker will be author and noted geneologist Darryl Brady. For more information call Clement at 0407 997 911.
- Midland Friendly Garden Club** meets at 9.30am on alternate Thursdays at Bruce Douglas Pavillion, Brown Park, Salisbury Road, Swan View. The next meeting will take place on June 11. Our guest speaker will be Michael Drake-Brockman from the WA Chrysanthemum Society who will be talking about the intricacies of growing these admired flowers. For more information call Jenny on 0424 553 002 or Barbara on 0482 935 686.
- Darling Scarp Artisans** will host a sale and exhibition on Saturday and Sunday, June 13 and 14, from 10am to 4pm at the Kalamunda Agricultural Hall, Canning Road, Kalamunda. Explore creative arts and crafts made by local artisans.
- Bushcare Info Chat and Music** will be hosting a talk on Sunday, June 7 from 2pm to 4pm at Darlington Main Hall. The talk will be provided by Professor David Newsome from Murdoch University who will explore weeds, why,

how, and where they grow, and the problems they cause. The event will also host local musicians Yamuna Daw and Mx Margaret. For more information visit www.mixmargaret.com/bushcare
Noticeboard is for non-profits and community groups advertising free/low cost events/programs. Entries must be emailed to editorial@echo-news.com two weeks before the event.

Woofers of the week

Cookie is a two-year-old kelpie cross. Her previous owner has another dog that unfortunately doesn't get along with cookie and her owner is worried she could get hurt. Cookie is good with kids and cats, and is very sweet. She is sterilised, microchipped, and vaccinated. Costs Apply. Contact Bakers Hill Dog Sanctuary on 9574 1438.

'Barbie' bounces his way to 300



'Barbie' Mallaby with his children break the banner before his milestone 300th game.

PETER W LEWIS

VETERAN Chidlow Cougars player Matthew 'Barbie' Mallaby recently notched up his 300th senior game of footy for his beloved club at Chidlow Oval against Pickering Brook, a club milestone.

Barbie was all smiles as he, along with his kids burst through the banner to kick off the special occasion on a crisp, but sunny afternoon.

It was a testament to the long-time player to see lots of family, retired team mates and friends on hand to celebrate the first man to hit the 300 game mark for Chidlow.

The then freshfaced Barbie joined the Cougars in 2009 after playing his junior footy at the Hills Hawks.

A tenacious ball getter who enjoys getting his hands dirty at the bottom of the packs, he

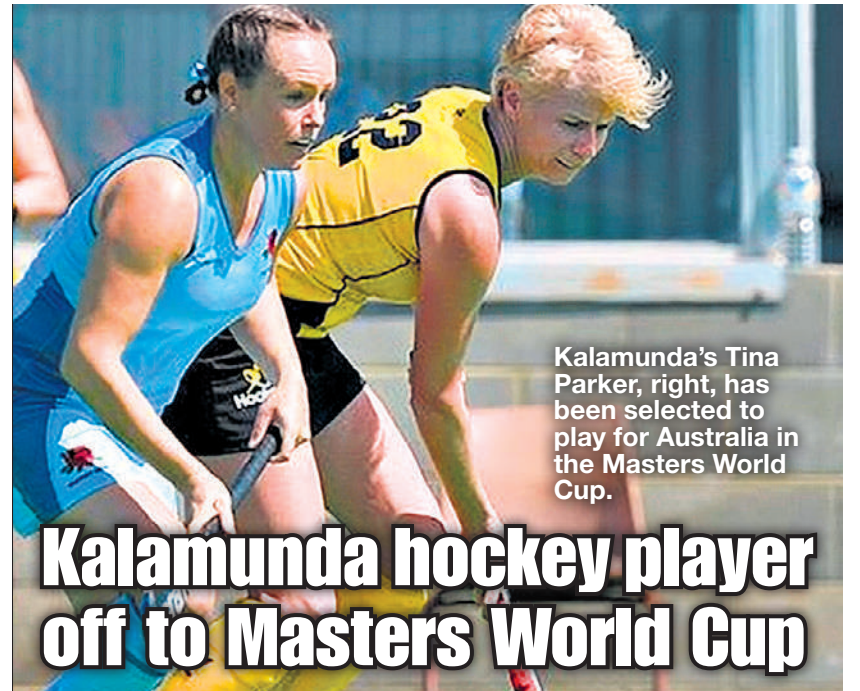
compliments this with a skilful right foot and a sticky set of hands.

He's also a terrific mark for his size.

Barbie said his favourite memories over almost two decades are playing in premierships, players trips, but mostly being with a bunch of mates who all love a laugh and having a kick together.

"I would also like to thank my wife Cherie and the kids for their support over the years," he said.

There's very few things Barbie hasn't achieved in his 18 years wearing the yellow and black including best first year player 2009, Kaz Dymek Medalist (Fairest & Best) 2010, 2012, 2015, runner up F&B 2016, 2018, 2019, leading goal kicker 2024, life membership 2017, captain 2013-18, coach 2017-23, treasurer since 2023, 11 grand finals and five premierships.



Kalamunda's Tina Parker, right, has been selected to play for Australia in the Masters World Cup.

Kalamunda hockey player off to Masters World Cup

PETER W LEWIS

KALAMUNDA-born hockey player Tina Parker has been selected to play for Australia in the Masters World Cup event coming up in the Netherlands in July this year.

Now currently playing at the Kalamunda Hockey Club, as a young adult she played hockey at the highest club level in Perth with the Victoria Park Panthers, having played her first game for Mary's Mount Primary School in an otherwise all boys team in the 1980s.

Playing as a midfielder and striker Ms Parker enjoys the contest and is willing to slide to anything in the forward D.

She has represented Western Australia many times since her first representation in 2010, going on to represent Australia in 2011 in the 35s squad.

For the upcoming tournament Ms Parker, better known as Parky, will be playing in the 50s division and has been selected in the leadership group of three along with two players from Victoria.

In the most recent National tournament, the WA state 50s team were successful in winning the gold medal against Victoria with six selections from WA making it into the Australian squad.

Mrs Parker also has junior sport connections with the High Wycombe Bulldogs Footy Club and Guildford Kalamunda Swimming Club.

The cost of getting to the Netherlands, accommodation, tournament fees and uniform costs are significant and she is asking for support and has set up a fund raising page with the aim of raising \$10,000.

All donations are tax deductible and to contribute go to www.asf.org.au/campaigns/tina-parker/stairway-to-world-cup

Local Real Estate

**Residential
Commercial
Rural & Country**

Kalamunda collection points for homelessness appeal

REIWA is launching its 2026 Sleeping Bag Appeal to support those experiencing homelessness during winter.

Collection points for donations are available in Kalamunda and will remain open until July 3, accepting donations of new and freshly laundered sleeping bags and blankets, and other essential items.

The collected items will then be distributed by The Salvation Army for people in need.

The Salvation Army's external communications state manager Warren Palmer said REIWA's Sleeping Bag Appeal provided a lifeline for the growing number of people sleeping rough, or in tents, and overcrowded dwellings.

"According to May 2025 data, about 900 people were rough sleeping in Perth alone, with another 500 people temporarily sheltered. Youth-specific data indicates at least 70 young people sleep rough across Perth each night," he said.

"While these numbers fluctuate from month to month, the overall trend shows a steep increase in the number of rough sleepers since early 2024.

"Life is very challenging for these members of our community, especially in winter. A sleeping bag can soften the impact of

sleeping on concrete, dirt or timber benches, and provide some level of insulation against the weather.

"The other items we are seeking are also essential to support people's needs through the colder months.

"It's a sad reality that they often need to replace these items on a regular basis due to them being stolen, or losing them when they are being moved on or if the areas where they are sleeping are cleaned before they can retrieve their belongings."

REIWA President Suzanne Brown said the appeal was a simple but powerful way the real estate industry and broader community could support those living without a roof over their heads.

"We often don't think about how easy it can be to become homeless," she said.

"All it takes is a serious car accident, business failure, relationship breakdown, unemployment or bad health to change the direction of your life.

"For some people, it's a short-term situation and may involve couch-surfing while they get back on their feet.

"However, for a growing number of Western Australians, sleeping rough has become their day-to-day reality."

Ms Brown said the donation of a sleeping



REIWA is launching its 2026 Sleeping Bag Appeal.

bag can be life changing.

"Sleeping bags can serve multiple functions, acting as blankets, beds, pillows, places to sit while eating meals, and temporary shelters, providing some protection from the weather," she said.

"And while sleeping bags are very much needed, we are also seeking donations of blankets, warm clothing, footwear, socks,

underwear and hygiene products to support those in need.

"These donations will make a meaningful difference to someone's life."

Donation points are available in Kalamunda at 14 Haynes Street, 31 Haynes Street and 3 Canning Road.

A donation point is also available in Forrestfield at 20 Strelitzia Avenue.

“Personal service,
professional advice,
at the right price!”

Mobility in Style

Sleep well. Live well. Great life.

“Locals
Supporting
Locals”

Adjustable Base with/without Massage Including Choice of WA Made Genuine Orthopaedic Mattress

Key Features:

- Head and Foot Raise
- Programmable Memory Positions
- Zero Gravity, Anti Snore
- HiLo@Trendelenburg functions
- One Touch Flat Button & a Torch
- Wireless Remote Control
- Massage with 3 different Modes and a Timer
- Backup Battery
- Adjustable Legs
- 10 Year Warranty + 2 year Electrical Warranty

20% OFF
Selected
Mattresses and Bases



Walkers

20% OFF
Selected
Walkers

Lift Chairs

Our Lift Chair Recliners provide an ultimate performance in style, designed to be functional and fashionable and part of your home decor.

- Key Features:**
- 2 motors
 - Massage and Heat
 - Fabric or Leather
 - Lumber Support and Headrest
 - 2 year Electrical Warranty



NOW from \$1099

The Pathrider 140XL Scooter

Powerful, precise, & stylish.

Key Features:

- Full suspension
- Hydraulic brakes
- LED Lights
- Available in Red, Yellow & Silver



\$5999



NDIS Registered Provider

FREE IN-HOME TRIAL. RENT TRIAL OPTIONS AVAILABLE FOR NDIS CLIENTS.

FREE DELIVERY PERTH METRO
FREE INSTALLATION AND REMOVAL
OF OLD MATTRESS

CALL US ON
1300 BARKERS (227 537)

<https://barkersbeddingandmobility.com.au/>

Follow us on 
Interest Free and
Lay-by options
available.
T&C's Apply.

OPENING HOURS:
Monday-Friday:
9.30am-5pm

NEW LOCATION
321 Great Eastern Hwy, Midvale
Opposite Clark Rubber.

Barkers
Bedding & Mobility

Perth's most trusted brand
for more than 50 years

WINTER ELEVATED

THE COLD SEASON TAKES FLIGHT



EXPERIENCE
**PERTH
HILLS**
KALAMUNDA



**DISCOVER
KALAMUNDA
THIS WINTER**

FROM COSY CAFES AND BOUTIQUE WINERIES TO MISTY TRAILS, LOCAL GALLERIES AND HIDDEN GEMS, WINTER IS THE PERFECT TIME TO REDISCOVER THE HILLS.

**PLAN YOUR WINTER
ESCAPE TODAY**

