

ECHO NEWS

SINCE 1985

NEWS

Friday, July 3, 2026

MAXIMUM REFUND
FAST!
 Contact the
Tax Professionals
9257 1500
 Suite 13, 22 Haynes Street,
 Kalamunda
 admin@successtax.com
 www.successtax.com

STP
 SUCCESS TAX
 PROFESSIONALS

STP
 EXPRESS

Local Business Supporting Local People

VOL.43 NO.1969

Murals showcase school history
P6



Bassendean CCTV concerns
P11



DPLH on Swan Valley flooding
P3




Picture: Emily Fenner-Wilson

BoorYul-Bah-Bilya rangers

The first metro Aboriginal ranger team launches in Mundaring to assist in a range of landcare activities including restoring the Helena River. **P8**

TREE AESTHETICS

PERTH HILLS NEWEST SOIL CENTRE

Sand • Soils • Gravels • Mulches • Firewood

THE BEST HEAT COMES FROM WOOD!

Prepare for winter now BEAT THE RUSH!

SCAN HERE TO SHOP NOW!

- Pick-up or delivery options available
- Competitive prices
- Wholesale prices on selected products
- Still Perth Hills preferred Tree Service company

Call us now 9250 6599

Opening Hours
 8am-4.30pm Monday-Friday
 Lot 10 Talbot Road Hazelmere
 (ENTRY OFF MIDLAND ROAD)

office@treeaesthetics.com.au www.treeaesthetics.com.au

Kalamunda Funeral Company
 JUST give us a call. No Fuss, No Frills.



Just Cremations
 17 Canning Rd, Kalamunda 1800 65 35 95

ADVERTISEMENT

\$100 FUEL SUPPORT PAYMENT

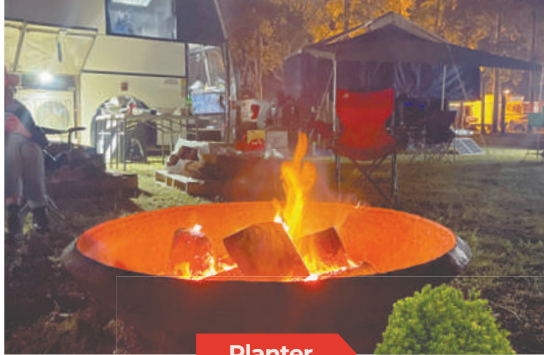
CLAIM NOW!

MEMBER FOR MIDLAND
STEVE CATANIA
 BUILDING A BETTER COMMUNITY

08 9274 8811 midland@mp.wa.gov.au

Authorised by S.Catania 34/6 Keane St, Midland WA 6056

Rustic Fire Pits For Sale



Planter



Fire Pit

A selection of solid metal fire pits ready for a new home. Strong, rustic and full of character. Ideal for outdoor fires or as decorative garden planters. Credit card accepted.

Call Ken Watkins - 08 6117 3720



PEK CARE Op Shop Midland

PRE-LOVED. GREAT FINDS. BIG IMPACT.

Your local op shop supporting PEK Care Community Services Inc. Every Purchase helps care for our community - one find at a time.



We Accept Donations!

Seniors get 20% off every Thursday

- Quality pre-loved clothing for all ages
- Shoes, accessories & more
- Affordable & sustainable
- Supporting local community services



Good for you, great for others.

OPEN
Monday - Friday
9:00am - 5:00pm
Saturday
9:00am - 5:00pm
Sunday
CLOSED

SHOP MORE. SUPPORT MORE.
Every purchase helps PEK Care continue making a difference in our local community.

Back to Sunday Trading from June 29th

VISIT US TODAY!

PEK Care Op Shop Midland
Unit 4 / 245 Great Eastern Highway
Midland WA 6056

PEK CARE INTERNATIONAL 08 6285 5938

FOLLOW US ON FACEBOOK
PEK Care Op Shop Midland

Thank you for supporting local!

THE NEW POWER RANGERS

GO, GO RANGERS!!



THE BIBBUL NGARMA ABORIGINAL ASSOCIATION'S NEWLY FORMED RANGERS ARE AN INDIGENOUS LED TEAM RESTORING THE HELENA RIVER CATCHMENT THROUGH CULTURAL LAND STEWARDSHIP, CONSERVATION, BIODIVERSITY MONITORING AND COMMUNITY PARTNERSHIPS.

ECHO YOUR THOUGHTS

Have your say:
editorial@echo-news.com

Thought for the day

"You can't go back and change the beginning but you can start where you are and change the ending."

- CS Lewis

Highway has now changed

Dear Echo News,
Having recently been caught up in the almost shutdown of Great Northern Hwy due to an event held in Herne Hill on June 6, it made me think how that drive from Middle Swan to Upper Swan has changed.

Once a free-flowing major artery, traffic mainly being clay trucks, locals, light trucks, MTT buses carrying workers and kids to school via Midland junction.

Most oncoming vehicles getting a friendly wave recognisable by the Swan rego they displayed.

Along the way manicured vineyards and livestock grazing.

Sadly, the Houghton Winery sign has gone (big piece of local history) with more vines being removed.

Businesses being locally owned and operated ie: a sawmill, woodyard, a cooperage, a hardware store, a postoffice/convenience store, a citrus juicing factory, a service station, liquor outlet.

Plus, a little ole church and a primary school all to service needs of the valley.

Further to the hardware store it would have rivalled the big green sheds of today because it sold everything from A to Z.

Wheels of progress have rolled in bringing retail outlets such as barista coffee, boutique breweries, distilleries, nougat, chocolate, honey, tapas, eateries, hair salon etc.

Wheels keep rolling,

except along the highway due to congestion.

**B Bates
Millendon**

Long wait for Swan hospital site

Dear Echo News,
How much longer are we having to wait for the state government to make a decision about the ownership, and more importantly, the future use of the old decommissioned Swan District Hospital site in Middle Swan?

At a time when there is a well-known shortage of residential aged care beds to meet the needs of our ageing local community, when older people are waiting months and months to have their care needs assessed and funded, and when there are older people occupying beds in public hospitals because they have not been able to care for themselves at home, the state government allows the old 11 ha hospital site to sit idle and unwanted.

Correspondence from several state government ministers dating back to 2017 shows that our committee members were promised (in writing) that the hospital site would be (1) rezoned to allow for the building of a new and much needed residential age care facility and housing in various forms, and (2) that the site would be placed on the open market to attract a buyer from the age care sector.

In one of those letters, dated 13 March 2019, the then Minister for Lands, the Ben Wyatt wrote in part:

"As you are aware, an expression of interest

will be undertaken for the Swan District Hospital site following an application being lodged with the City of Swan to rezone the site to 'special use zone.'

"The rezoning will allow for the future redevelopment to include residential aged care, among other uses. Technical investigations in support of the rezoning request have now been completed and the application will be lodged following final consultation.

"Eventual marketing for the site will identify the government's commitment to making suitable land available for aged care development, and will encourage proposals incorporating aged care to be submitted."

Despite the promises and commitments made, and without any consultation with us or with the City of Swan, Minister Wyatt wrote telling us in September 2020 that the site had been offered to the South West Aboriginal Land and Sea Council as part of the greater Native Title Settlement Plan.

Despite our numerous letters to the now Minister for Lands, the John Carey, no decision has been made about whether the offer to the SWALSC has been accepted, or if they are still considering the offer.

While we wait, the urgent need for new residential age care places, and homes in the City of Swan continues.

Come Minister, it is time for you and your government to make a decision about the ownership and future use of this site.

It is time to make a decision in the best interests of our local ageing community.

Enough is enough.

**Ron Carey
City of Swan
Community Care
Services Age Care
Sub-Committee
chair**

Consider the scouts

Dear Echo News,
At the June 23 Kalamunda council meeting, community members delivered deputations on the city's proposal to commercialise the Carmel Schoolhouse heritage site - a Crown reserve in a proclaimed drinking water catchment, occupied by a scout group for over 24 years.

One of the most affecting moments of the evening came from the scout leader himself.

He told councillors his group had been on that site for over 24 years and that they did not want to leave.

He offered to work with the city to generate income from the site and asked councillors, before they voted, to consider the scouts with more care than they had been shown so far.

It's important to note that the site's heritage obligations and maintenance costs are the city's responsibility - not the scout's - and nothing in the scout's tenure has created the constraints the city now cites as reasons to commercialise.

The agenda made the city's preferred direction plain.

Of six options considered, the officer recommended option 3c: converting the heritage schoolhouse site into a camping and caravan park on a commercial ground lease, to be taken to market before any planning approvals are in place.

Astonishingly, community consultation will not occur until after a preferred commercial operator has already been selected.

The community's concerns about this were substantive: unresolved planning and environmental constraints, no confirmed revenue figures, and a process the city's own risk register

rates as major and high risk of not obtaining the necessary approvals.

Yet council voted unanimously to proceed and no councillor spoke against.

Not one question was asked about the water catchment, the heritage obligations, or the scouts future.

Councillor Modolo explained the unanimity plainly.

Speaking to the motion, he told his colleagues: "Wasn't that long ago we had a strategic retreat, and at that strategic retreat, we talked very much about all of the assets we have, our inability to maintain them to the best of our ability, and the need to make hard decisions."

A second councillor added: "We have to make the most of all of our assets."

**G Ryan
Wattle Grove**

The Echo reserves the right to edit letters for length, legal reasons or clarity. The opinions expressed do not necessarily reflect those of the Echo. All letters must contain the author's full name, address and phone number for verification purposes.

ECHO News

ADDRESS:
Unit 4/9 The Avenue
Midland WA 6056

Phone: 9374 6666

GENERAL MANAGER / EDITOR

Peter W Lewis 9374 6605
peter.lewis@echo-news.com

ADVERTISING
sales@echo-news.com
Karon McCracken 9374 6610

EDITORIAL
editorial@echo-news.com
Guanhao Cheng 9374 6602
Mike Peeters 9374 6601
Brayden Mould 9374 6603
Camila Egusquiza 9374 6603

PRODUCTION
production@echo-news.com
Liz Rowlands 9374 6613
Maja Pietranik 9374 6613
Brody Pettit 9374 6613

ACCOUNTS
accounts@echo-news.com
Caprice Harries 9374 6604

OFFICE HOURS:
Monday-Wednesday:
9.00am - 5pm
Thursday:
9.00am - 4pm
Closed Friday
Closed: Weekends & Public Holidays

Flooding a City of Swan responsibility: DPLH

GUANHAO CHENG

THE Department of Planning, Lands and Heritage (DPLH) says managing increases in groundwater levels in Swan was the responsibility of local government however they will assist in addressing the problem.

Last week, *Echo News* covered the impacts of flooding shared at the groundwater forum.

Residents shared stories of being forced out of the Swan Valley by the issues and the way the groundwater rising coincided with development beginning in neighbouring areas.

Academics helped lay a foundational understanding of how groundwater worked, how it was understood at state level and why the flooding was an emerging issue previous developments didn't force state planning to confront.

Ms Rogers and Mr Gratte presented photographs, monitoring records and observations collected over more than a decade, arguing that groundwater levels had steadily risen since surrounding urban development commenced.

The pair displayed historical and contemporary images of their property, documenting flooding, tree decline and changes to nearby wetlands.

Swan Communities Environmental Alliance vice-chair Jan Zeck spoke about years of community-led monitoring and documentation across the northeast corridor, arguing residents needed to continue scrutinising planning proposals and collecting evidence of environmental impacts.

A recurring theme throughout the evening was the need for ongoing monitoring, review and adaptive management of groundwater systems as development continues across Perth's northeast growth corridor.

Ms Thompson said the planning processes needed more attention as gaps existed, and the northeast corridor was a blind-spot in the planning framework's knowledge of how to deal with water.

She said monitoring wells to the western side of ongoing developments communicated that water table levels were dropping, but there was a lack of the same type of historical monitoring in the east.

"It's been really hard to have conversations about this in part because sometimes we talk to government departments and they say, 'How can the groundwater be rising? It's been falling since the 1970s. Look at our wells,'" Ms Thompson said.

"The Department of Water and Environmental Regula-

tion (DWER) has long-term monitoring wells, and you'll notice... they're all either within or to the west of the development corridor (and) we don't have long-term monitoring east of the development site.

"If we go to these wells, it is certainly true that groundwater is lower today than it was in the 1970s.

"If we zoom in a little bit more and we look at what's been happening since development began in 2010, what we find at the majority of these wells is that that drying trend looks a little bit like it's reversing.

"We see that in seven of the nine wells that are closest to this development area.

"It's not really clear that we're still in a drying situation according to these monitoring wells.

"The bigger problem though, is that they are biased towards the west rather than east of the development."

Aside from the blind-spot in the data, Ms Thompson said historically deep sands and deep groundwater also meant water management shortfalls elsewhere were more forgiving.

Water would rise up between pores in the ground but then the steep slopes in that deep sand created a buffer that allowed the water to flow down and away quickly.

"But when we move this to somewhere with shallow ground water and lots of clay like the Swan Valley in the northeast corridor, and we let the same thing happen, we're mostly going to have shallower slopes that are going to send water off the site and into neighbouring properties," she said.

"There's really a need to think about controlling how high groundwater should be allowed to rise within development areas.

"I think that's probably the main thing that we should be thinking about addressing."

During an ABC Perth morning radio interview on June 24, Ms Thompson said nobody was breaking the rules.

Ms Thompson suggested a potential development moratorium until the issue had a solution and a serious review of the planning surrounding groundwater management.

The radio interview revealed that DPLH released a statement which said increases in groundwater levels were likely due to site specific draining conditions and are the responsibility of local government.

"State government agencies are assisting the City of Swan with their assessment of the area to get a clearer un-



Swan Valley resident Cheryl Rogers presenting on the impacts the flooding has had on her family's tree farm. Picture: Guanhao Cheng

derstanding of the local urban hydrology and to help the city identify appropriate short and long-term mitigation measures," the statement said.

In response to questions from *Echo News*, a state government spokesperson said the Western Australian Planning Commission (WAPC) is responsible for determining subdivision applications and setting their conditions.

"Subdivision and development processes are supported by detailed water management reports. These reports inform the design of drainage," they said.

"Following subdivision approval, local governments play a prominent role in clearing conditions, including the implementation and ongoing management of drainage and groundwater systems.

"Subsequent proposals for development are generally assessed and determined by the relevant local government."

Initial documents formed by state agencies, which then inform the entire process, are not within the City of Swan's control.

The city, during that stage, can only advise and submit recommendations but holds no decision-making power.

In response to *Echo News* questions, City of Swan chief executive officer Stephen Cain said the city was essentially the last approval in a long line with many initial documents being out of their hands. **Cont. p18.**

Chalice Mining infrastructure corridor concern in Chittering



The Protect our Valley Chittering Facebook group has grown from 280 to 480 members and attracts up to 50 people to meetings. Picture: Lisa Sloan

CAMILA EGUSQUIZA SANTA CRUZ

CHITTERING residents have raised concerns about proposed infrastructure corridors that could traverse private properties for Chalice Mining's Gonneville Project.

Chalice discovered a multi-metal deposit at Julimar in 2020 and submitted the Gonneville project for state and commonwealth environmental approvals in 2024.

Since 2025, a number of residents have received notice that a water pipeline and power infrastructure could traverse their properties as part of the project.

At a community meeting hosted by Protect our Valley Chittering attended by *Echo News*, residents voiced concerns about environmental impacts, potential property devaluation and being classified as unaffected landholders despite some corridors running near their properties.

Chalice has applied for a miscellaneous licence under the Mining Act 1978 (WA) for its infrastructure corridors, which can secure rights for mining infrastructure on private land and provides compensation and objection processes for landholders.

A Chalice Mining spokesperson said not all powerlines would run overhead.

"Chalice Mining has listened to landholder and community feedback and concerns regarding the impact of overhead powerlines through the rural residential zone near Maryville Heights and has decided to install the powerlines underground in this zone," the spokesperson said.

The Shire of Chittering passed a motion at its last council meeting to actively advocate against the location of the proposed mining infrastructure through private properties.

The shire said final decisions regarding the infrastructure would likely be determined through stated approval processes.

Protect our Valley Chittering founding member Sarah Mchiggins received notice that the powerline crossing her property would run underground if the preferred corridor receives all approvals.

"Even if the powerlines are underground, the corridor could still require substantial land clearing and place a 100m-wide infrastructure corridor across our property," she said.

"Furthermore, I believe the proposed overhead powerlines and infrastructure corridor should also be moved away from larger rural properties and productive farming land.

"Overhead powerlines could fragment properties, limit future land use, affect farming operations and permanently alter the landscape and character of our rural community."

Ms Mchiggins and her partner bought their property at the end of 2025 but only found out about the preferred infrastructure corridors in May 2026 when they received a letter from Chalice.

"When we purchased we were aware that the rear of our property contained a protected tree preservation area, covered by a restrictive covenant and environmental management plan - we weren't aware of anything to do with Chalice Mining," she said.

Cont. p18.

Wet Weather Gear

KEEP DRY & WARM



Google
WASP
MIDLAND

OPENING HOURS
Monday – Friday
7.30am-5.00pm

WA Safety Products

9250 7622

2/211 Great Eastern Hwy, MIDLAND

www.wasafetyproducts.com.au



Artist impressions of the new Mundaring Cultural Hub.

Mundaring Cultural Hub set to transform town centre

THE Mundaring Cultural Hub has taken a major step forward, with council approving the project's concept design and business case.

This marks the transition into detailed design and procurement for the shire's largest ever infrastructure project.

This is more than a milestone. It marks the beginning of a once-in-a-generation transformation for Mundaring, with the cultural hub set to become the largest single investment in community infrastructure in the shire's history.

The project is fully funded through a \$15 million Australian government Thriving Suburbs program grant, alongside funding planned and budgeted by the shire over previous years.

Located in the heart of Mundaring, the cultural hub will bring together a diverse range of community, cultural and civic uses, including art galleries and workshop spaces, contemporary library with dedicated youth and maker spaces, visitor centre, local history museum, café, civic and community spaces, meeting rooms and flexible-use areas.

Positioned directly across from the Sculpture Park, the cultural hub will become a central destination for community life supporting events, exhibitions, learning opportunities and celebrations, while strengthening the connection between people, place and culture.

Bullwinkel MP Trish Cook said the project represented a significant milestone for the region.

"The cultural hub was just an idea when I was the deputy shire president, and I am so excited to see the project concept design approved now as the federal member for Bullwinkel," Ms Cook said.

"The cultural hub will become a central destination for community life, and I look forward to seeing it come to fruition, with the approved design concept and business case now providing a clear and deliverable path forward."

Shire President Paige McNeil said the approval marks a defining moment for the community.

"This is the beginning of the

most significant project our shire has ever delivered and a turning point for our town centre," Ms McNeil said.

"The Mundaring Cultural Hub is more than a building. It is the catalyst for a broader vision that will revitalise the town centre and create new opportunities for our community.

"This includes a range of future housing options, helping ensure people can continue to live and stay connected to the Perth Hills community they value.

"The cultural hub reflects what our community has told us matters most. It will be a place to come together, experience arts and culture, and celebrate community life.

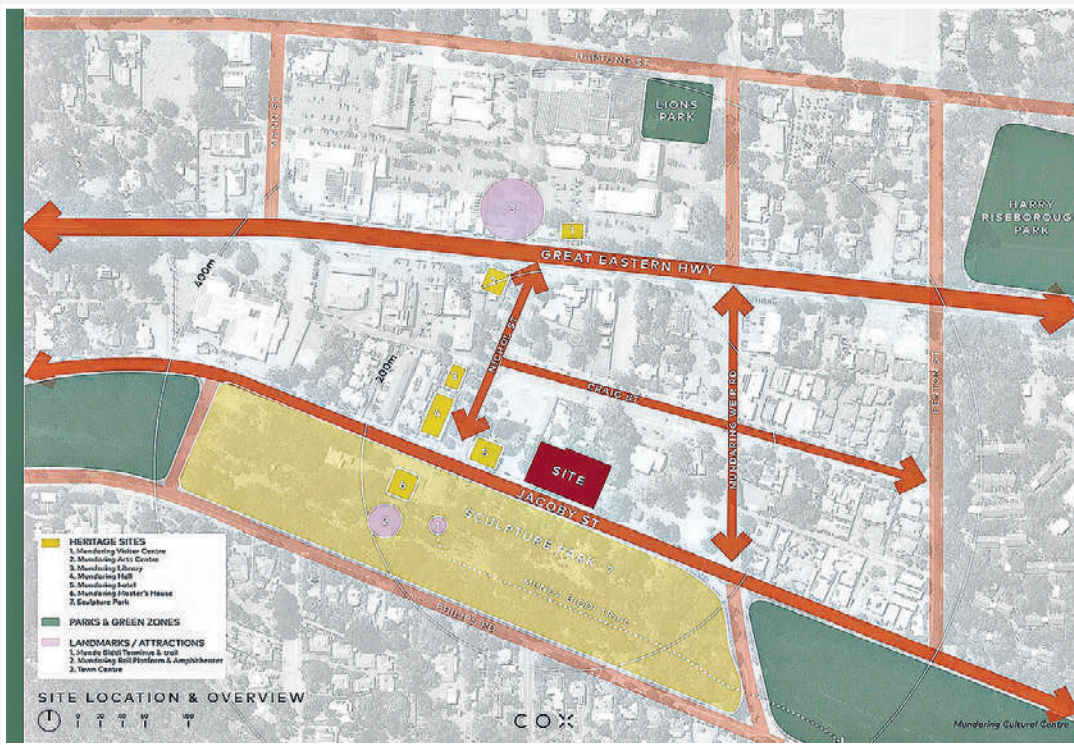
"The project is a cornerstone of the shire's town centre revitalisation, boosting local

businesses while creating a vibrant destination that attracts visitors and expands tourism opportunities, strengthening Mundaring's long-term economic and social vitality."

Extensive community engagement over many years has shaped the vision and priorities for the hub with the approved design concept and business case providing a clear and deliverable path forward.

Detailed design and procurement will now begin, with a construction partner expected to be appointed later in 2026.

Construction is anticipated to commence in 2027, and the community will be kept informed via the Mundaring Cultural Hub project page as the project progresses through its next stages.



WHAT CAUSES TENSION IN A RELATIONSHIP?

READ PAGE 282

Scan the QR Code to learn more.

dianetics-perth.org.au

Hubbard Dianetics Foundation Perth
22 Belmont Ave, Rivervale WA 6103

©2026 Church of Scientology Australia. Dianetics is a trademark and service mark owned by Religious-Technology Center and used with its permission. All Rights Reserved.

Containers for change delivers \$1 million to our Men's Sheds

MEN'S Sheds have raised an impressive \$1 million through WA's Containers for Change program.

The milestone highlights the importance of the popular recycling program in supporting community groups across the state while also delivering environmental benefits.

The expansion of Containers for Change into wine and spirit bottles among other containers from July 1 will unlock a further 200 million containers per year eligible through the recycling program.

The funding source is helping Men's Sheds expand and create activities which bring people together and keep them engaged with their communities.

Men's Sheds are inclusive spaces where people can build, create, and connect with some members, enjoying hands-on activity in wood or metal workshops while others are drawn to the camaraderie and sense of belonging.

By supporting mental, physical and social wellbeing, Men's Sheds reduce isolation and loneliness while strengthening communities.

Environment and Community Services Minis-

ter Matthew Swinbourn said the success of Containers for Change goes far beyond environmental and recycling benefits to providing valuable support for charities, social enterprises, and non-profit organisations across Western Australia.

"The scheme is a favourite fundraiser for community groups such as Men's Sheds, who can set up their own container collection points as well as getting refunds donated by supporters using the account ID code.

"Men's Sheds and Containers for Change are a perfect match, with collections providing a reliable income as well as hands-on activities that keep members socially connected."

Men's Sheds of WA chief executive officer James Wild said for many of the shedders, container collection offers a meaningful way to contribute to their community regardless of their physical ability.

"It also helps create a shared sense of purpose, while strengthening social ties for many men suffering from loneliness and isolation," he said.

"Participation in the program continues to grow, with 78 sheds actively engaged in Containers for Change over the past six months alone."

Swan councillors back community on review focus

GUANHAO CHENG

CITY of Swan councillors presented to the Swan Planning Process Review Committee (PPRC) underlining the importance of community satisfaction with the review and the need for the review consultant to meet with the community.

In *Swan Planning Process Review Committee concerns* (*Echo News*, June 12) the community expressed concerns the scope in the terms of reference set during their first meeting lost the focus of the review.

Council resolved at a special meeting to request City of Swan chief executive officer Stephen Cain to pause all activities for the appointment of the planning review consultant until the terms of reference had been renegotiated.

Mr Cain obtained legal opinion from McLeods Lawyers that the council resolution was not valid, and that his action in approaching three potential reviewers was a legitimate action since the first committee meeting had supported the terms of reference.

During the second meeting of the PPRC, councillor Aaron Bowman attended as an observer and presented a statement to the committee.

Cr Bowman supported community involvement with the review and suggested the consultant should meet with the community.

Mr Cain offered a workshop for the community to be briefed on his findings before they were reported, however the community maintained this may be too late in the process for involvement.

During the meeting, Cr Rod Henderson succeeded in including stronger reference to the state planning framework and inclusion of three community planning examples, being the Hazelmere data centre, The Vines redevelopment, and Midway Ford.

Earlier in the council meeting a community statement was read to council, repeating the community concerns and warning the council that the \$50,000 allocated for the review would not cover the broadened scope and would be wasted.

Committee community representative Dixon Lowe read out the statement highlighting the need to keep a narrower focus in the review.

"The scope has been increased to beyond that which could be achieved in the time frame and finances for this



City of Swan councillor Aaron Bowman gave a statement supporting a community meeting with the consultant.

review," he said.

"You will recall that there is \$50,000 put aside for this 100 hours of review.

"This scope is now impossible to reach in those 100 hours.

"The community proposed a very specific scope of work to the committee and that could be achieved in the \$50,000.

"The chief executive officer had rewritten the terms of reference adding in many details that represent the staff and internal administrative position which are not required to judge whether the state planning framework

is being followed.

"These terms of reference now present an opportunity for a reviewer to randomly select samples and so it is a cause for concern."

Following the meeting on June 18, community members sent a co-signed letter to City of Swan Mayor Tanya Richardson and deputy mayor Charlie Zannino requesting their intervention to have the reviewer meet for two hours with community representatives at an early stage of their review.

Community members confirmed with *Echo News* they were still awaiting a response from the city.





Parkerville Grove School

A specialist secondary school
opening in Term 3, 2026

Enrolments for Years 7 to 10 now open

For families exploring enrolment

- Meet with the CEO, Principal and Psychologist
- Complete an enrolment form and interview
- Ask questions and find out more about the school

Parkerville CYC,
Beacon Road,
Parkerville



ENROLMENT DAY

Monday July 6th | 9am - 3pm

Learn more about enrolment:
parkervillegroveschool.wa.edu.au

Parkerville Grove School is delivered by Parkerville Children and Youth Care through Parkerville Therapeutic Education Services.

Colourful murals showcase school history

MIKE PEETERS

MOUNT Helena artist and muralist Meraki Boho (aka Tayla Beynon) is collaborating with school children to create three colourful murals at Mundaring's Sacred Heart Primary School.

School principal Mark Tenney said Ms Boho, who is an official artist in residence, was doing an incredible job of painting three large concrete water tanks as part of the history of the school.

"All of our students from pre-kindy to year 6 have also contributed to the ideas and themes and even helped paint some of the sections themselves," Mr Tenney said.

"Ms Boho has been an important part of the

school community over the past few weeks by involving the children in the project and helping to instil a sense of belonging."

He said some symbols of the school factions had been embedded in the murals between the flora and fauna to add to the interest.

Ms Boho said she had always been interested in mural painting and it was great to get the kids involved with their paintbrushes.

"Murals have now become the main focus of my work with the only drawback at this time of year being the weather which can obviously slow things down a bit," she said.

"Because of this I expect it will take a few months to finish the murals."



Two Sacred Heart schoolchildren get involved in the painting.



One of the concrete water tanks after its makeover.

Romancing the Stone creator award nomination

Maida Vale resident Tom Hogg in his garden.



MIKE PEETERS

MAIDA Vale garden creator and well-known local identity Tom Hogg (86) has been nominated for an Awards Australia Foundation local legend WA community achievement award.

Mr Hogg is the creator of the Romancing the Stone garden where over the past 25 years he has transformed his own home from a rundown and neglected property into a community treasure, as reported in *Tom's garden romance going strong*, (*Echo News*, September 21, 2023).

"My Dad has always been dedicated to community service and is still working hard to provide benefits to the community where he is changing lives through his generosity and hard physical labour," his daughter Trudi said.

"He has always been raising money for something through Rotary, the Freemasons or small businesses that he owned.

"One of his most successful projects was working with the Amanda Young Foundation where he raised awareness and funds for meningococcal disease.

"The success of the Amanda Young Foundation and the Darling Range Hub, both of which he has significantly supported, will persist due to the strong foundations he helped establish."

She said her father's simple philosophy in life had always been to devote yourself to creating something with purpose and meaning in your own life.

"He always instilled in me the values to work hard for what you want and to help others along the way, always learning as you go."

Ms Hogg said her father had completed most of the work on his Romancing the Stone garden singlehandedly.

"After buying the property in July 2000 he purchased and carted more than 2000 tonnes of rocks



A view of the lake at the garden.

and cemented them into position himself.

"Through various charities he has been able to raise about \$640,000 towards helping their cause by using his garden for open gardens and the like over the past 25 years."

Mr Hogg said he unfortunately suffered a setback recently when he had to undergo a hip replacement.

"This set me back from doing some things but everything has still proceeded the same as other years."

He said he was still able to hold some successful charity concerts and continues to be involved with the Cannington Community Education Support Centre.

"This is to help teenage children on the spectrum to gain working skills and experience that can help them gain employment opportunities in the future," Mr Hogg said.

He said he is always looking for new charities to be involved with.

To contact Mr Hogg call 9454 4298 or email tom.hogg6455@gmail.com



Always in front!

Read the latest news online at



www.echonepaper.com.au

Subscribe Now



Your FREE Local Weekly newspaper is also available from local outlets or subscribe NOW to get *Echo News* emailed direct to your inbox.

sales@echo-news.com | editorial@echo-news.com
Suite 4, 9 The Avenue, Midland | 9374 6666

No progress on Lloyd St Bridge: Libs



Concerns about Lloyd Street Bridge's lack of progress remain. Picture: Daniel Holmes

PETER W LEWIS

LIBERAL Senator Slade Brockman and Guildford-based MLC Anthony Spagnolo have criticised the Cook Labor government after state Budget Estimates hearings confirmed there has been no meaningful progress on the long-promised Lloyd Street Bridge project since construction was halted in 2022.

During Budget Estimates hearings in late June, questioning from Liberal MLCs Tjorn Sibma and Anthony Spagnolo revealed the project remains at the same point it was four years ago.

Department of Transport and Major Infrastructure director general Peter Woronzow confirmed the department has completed a new bridge design, but agreement has still not been reached with all stakeholders.

Mr Spagnolo said the Budget Estimates evidence confirmed the project had been allowed to drift.

"The evidence given by the director general in Budget Estimates confirms what local residents have suspected for some time. Four years after the project was halted, there has been no progress.

"The people of Midland were promised action in 2022. Instead, they've seen years of delay, the original project funding redirected elsewhere, and still no clear timeline for the commencement of construction.

"This bridge is a critical piece of infrastructure for one of Perth's fastest-growing strategic centres. Local families, businesses and commuters deserve certainty and a clear timeline."

Liberal Senator Slade Brockman said the delays also reflected a failure by local federal Labor member Tania Lawrence to advocate for her electorate.

"The Lloyd Street Bridge has been promised for years, yet the community is still waiting while Tania Lawrence and Steve Catania have failed to deliver the advocacy this project needs."

Senator Brockman said the delays also reflected Western Australia continuing to miss out on its fair share of commonwealth infrastructure investment.

"Western Australians contribute billions in federal taxes and deserve their fair share of infrastructure funding in return.

"Growing communities like Midland should not be left behind because Labor members are unwilling to stand up for Western Australia.

"Tania Lawrence and Steve Catania need to stop taking Midland for granted and start delivering the infrastructure this community was promised years ago."

Swan Chamber of Commerce president Mike Matich, a former Liberal candidate for Midland, said the delays were continuing to hold back the local economy.

"Midland is a growing strategic centre, yet businesses and commuters continue to face worsening congestion because this project remains stalled.

"The community has waited long enough. It's time to stop talking about this project and start building it."

Midland MLA Steve Catania said the Cook Labor government remained committed to delivering the Lloyd Street Bridge.

"This is why we have been engaging closely with Traditional Owners for some time to work through the concerns raised in their Section 10 application.

"Rather than seeking formal determination of the Section 10, against the wishes of the Traditional Owners and other community representatives, the state government worked with the Traditional Owners to better understand and respond to their concerns.

"A revised bridge design has been recently provided to the Traditional Owners and has been positively received, with Main Roads working with them to finalise this process so the project can proceed.

Cont. p18.

Illegal dumper fined over Helena River waste

ORGANISATIONS restoring the culturally significant Mandoon Bilya (Helena River) welcome the successful prosecution of an illegal dumper who abandoned a rubbish-filled vehicle and trailer.

An individual was ordered to pay more than \$5000 after being convicted for illegally dumping household waste, furniture and hazardous items on the Helena River floodplain at Hazelmere.

The City of Swan received reports in August last year of a person attempting to dump waste in bushland.

When community safety rangers attended the site, they found the vehicle and trailer bogged and abandoned among a large amount of illegally dumped rubbish.

Following an investigation, the offender was identified and charged before failing to appear at Midland Magistrates Court on June 15, where they were convicted in their absence.

The court imposed a \$2200 fine and ordered the offender to reimburse the city \$1805.25 in clean-up costs and \$1162.30 in legal costs.

Bibbul Ngarma Aboriginal Association (BNAA) executive director Francesca Flynn said illegal dumping remained a persistent problem along the river.

"Illegal dumping along the Mandoon Bilya (Helena River) is something we encounter far too often, and it's incredibly sad to see the river treated this way," she said.

"The river has deep ecological and cultural significance, and it's great to see that recognised in this judgement.

"We hope it will deter others who may be thinking of doing the same."

Ms Flynn said BNAA was working with the city,



Rangers at the dumpsite. Picture: City of Swan

the Department of Water and Environmental Regulation (DWER) and the Department of Biodiversity, Conservation and Attractions (DBCA) as part of a taskforce tackling illegal dumping along the river.

She said BNAA rangers were regularly removing illegally dumped waste, controlling weeds, planting native vegetation, restoring habitat and supporting volunteer groups working along the river corridor.

The conviction also comes as BNAA begins its three-year Mandoon Bilya Riverpark initiative, which aims to rehabilitate the river corridor and create a continuous natural parkland linking the Darbarl Yerrigan (Swan River) at Guildford with the Darling Scarp in Helena Valley.

"We're really pleased to be working closely with the city, DWER and DBCA to tackle illegal dumping along this stretch of the river," Ms Flynn said.

"This outcome comes at an exciting time for this part of the river."

Make life easier on everyone

Discover **JUST PET DOORS**



Neat fitting, secure and smart, these tough, UV stabilised polycarbonate pet doors are the answer to everyone's dreams.

Visit our website and use the simple size guide to find the perfect pet door.

- Shower Screens • Custom mirrors
- 24hr Emergency glass repair
- Shopfronts & Offices

JUST GLASS
SINCE 1980

Glen Howard is your Glass Fitting and Repair Specialist. Servicing the Perth and Hills areas for just over 40 years!

Mandurah 9520 8610 | Metro 9250 5580

JUST PET DOORS
www.justpetdoors.com.au

JUST GLASS
SINCE 1980
www.justglass.com.au

KIMBO'S Fashions
MIDLAND & WILLETTON

Winter Sale ON NOW!

GIFT VOUCHERS AVAILABLE

WE SHOWCASE OUR FASHION TO RETIREMENT VILLAGES Enquire today!

You can find us at
MIDLAND 9274 0429
1 OLD GREAT NORTHERN HWY | OPEN 6 DAYS
WILLETTON 9259 1698
UNIT 2 / 11 AUGUSTA STREET | OPEN 6 DAYS

Come say Hi, we would love to see you!



There were plenty of volunteers for the annual community planting day in Hazelmere.

Trillion Trees planting to restore Helena River

LAST week Trillion Trees hosted its annual community planting day in Hazelmere, as part of a broader winter restoration effort along the Helena River.

The Mandoon Bilya community planting day event brought together volunteers who planted more than 3000 native sedges, shrubs and ground cover plants to provide habitat for native wildlife especially quenda and snake necked turtles.

Trillion Trees restoration manager Doug Laurie said the organisation was grateful to everyone who turned up and took action for nature by joining the community planting day.

“We have been working together to restore this landscape along the Helena River (Mandoon Bilya) for almost 40 years, and we are seeing real improvements in the health of the ecosystem,” he said.

“We know this river corridor is critical for native wildlife and it’s so awesome to see growing numbers of quenda and snake necked turtles here.”

Trillion Trees Australia has been working in the region for over 40 years, and this site forms part of one of its key Perth wetland

restoration projects.

The free community planting days follow a renewed focus on Hazelmere wetlands.

Held during winter when the Helena River flows and the surrounding landscape comes alive, the planting days help support long-term ecosystem restoration, improve biodiversity and strengthen habitat for native wildlife.

The Helena River is a dammed river system that plays an important role in protecting Perth’s drinking water supply.

The river also helps slow water movement through the landscape.

This allows surrounding ecosystems and wetlands to retain moisture and remain hydrated during the warmer months.

The project also supports important native wildlife species, including the south-west snake-necked turtle, which inhabits nearby wetland environments such as Coal Dam Park.

To support the Helena River Appeal, visit <https://trilliontrees.org.au/wetlands-appeal>



**SUPPORT US
SO WE CAN CONTINUE TO
SUPPORT YOU**

When you purchase from one of our advertisers let them know you saw their ad in *The Echo*

ECHO
NEWS

Local Business Supporting Local People

www.echonepaper.com.au



The BoorYul-Bah-Bilya rangers have been assisting in a range of landcare activities since their formation and a headquarters is to be established soon. Picture: Emily Fenner-Wilson

First Aboriginal ranger team Mundaring launch

GUANHAO CHENG

THE first dedicated Perth Aboriginal ranger team has been launched in Mundaring, with the BoorYul-Bah-Bilya (BBB) rangers already working across the Helena River catchment.

Extinct fish found in Helena River (Echo News, May 29) reported the BBB rangers supported the surveys that helped find a fish previously thought to be extinct in the Perth Hills area.

The BBB Rangers are the first dedicated Aboriginal rangers team to be established in Perth, marking a significant milestone for the metropolitan area.

Bibbul Ngarma Aboriginal Association (BNAA) said the rangers had been established to care for and restore the natural and cultural environment of the Helena River as part of its BBB program.

BNAA chairperson and Noongar Elder Walter McGuire said it was important to make a stand for the environment.

“If you got story, heart, spirit, soul...then speak yourself for the old, the now and the future. Stand for it,” he said.

“BNAA has story, song, heart, spirit, soul...we speak, we stand for this environment.

“This environment is our family, we are part of it and it is part of us...the land, rivers, springs, hills, nighttime sky, daytime sky, sun, moon, stars, rain, lightning, thunder, freshwater, oxygen, clouds, wind, all flora and fauna, everything...is our sisters and brothers...our moort (family).”

Although only operating for a few months, the team has also assisted in mapping the proposed Mandoon Bilya (Helena River) Riverpark.

The rangers work across waterways and reserves

throughout Mundaring, Kalamunda, Gooseberry Hill, Bickley Valley, Piesse Brook, Pickering Brook, Glen Forrest, Darlington, Boya, Koongamia, Helena Valley, Bushmead, Bellevue, Midland, Hazelmere, Woodbridge and Guildford, including Beelu, Helena and Greenmount national parks.

Their work includes land and water management, ecosystem restoration, biodiversity monitoring, weed and feral animal control, cultural mapping, heritage protection, fire management and community education.

BNAA executive director Francesca Flynn said the launch of the BBB rangers was a critical turning point for the river and the team had shown what could be achieved in a short time.

In just a few months, the BBB rangers have shown what’s possible when cultural knowledge, science and community come together to achieve the best outcomes for Country,” she said.

“The BBB rangers are already reshaping the future of this river, and we’re incredibly proud to be building a model that can inspire community-led river restoration across Australia and beyond.”

A key focus for the rangers is BNAA’s three-year Mandoon Bilya Riverpark project, which aims to establish a continuous natural parkland linking the Derbarl Yerrigan (Swan River) at Guildford with the Darling Scarp at Helena Valley.

BNAA said the rangers were also working with local volunteer groups and collaborating with the Ballardong Corporation Rangers to coordinate activities across the wider Mandoon-Helena catchment.

BNAA are preparing to launch their new BBB Rangers headquarters in the Perth Hills later this year.

Midland speed limit review open for public comment

BRAYDEN MOULD

A NEW proposal to drop speed limits to 40kmh in select parts of Midland Town Centre has been put forward for community consultation by the City of Swan in consultation with Main Roads WA.

The changes would extend throughout the city centre, with potential streets targeted for the lower limits including major thoroughfares such as Great Eastern Highway and Victoria Street.

City of Swan chief executive officer Stephen Cain said that should the proposal move forward, the city would look at introducing physical infrastructure modifications to accompany potential speed reductions.

“Improvements such as additional tree planting and landscaping, upgrading footpaths, public art installations and other small-scale enhancements will make a significant difference to Midland, while supporting local businesses and encouraging greater community activity,” he said.

“Lower speed environments may also support a more comfortable experience for people walking, cycling, and spending time in busy activity centres.”

A similar proposal for selected streets in Ellenbrook has also gone to public comment in response to community con-

cerns over vehicle speeds, rat-running, and road safety.

When asked by *Echo News* how the lower speeds are expected to affect motorists, Mr Cain said the change in travel time is expected to be minimal.

“For most trips within the proposed Midland Going 40kmh (project) area, any increase in travel time is expected to be minimal,” he said.

“The roads being considered are relatively short and many already experience intersections, traffic signals, pedestrian crossings, and turning movements that naturally influence travel speeds.

“As a result, any difference in journey time is likely to be measured in seconds rather than minutes for many local trips.”

“While the process is still in the consultation stage, the city intends to collect data from the community before submitting a proposal to Main Roads WA.”

A Main Roads WA spokesperson said the feedback from the local community will be evaluated alongside standard technical traffic data before any final revisions are approved.

“Main Roads recognises the importance of community feedback in providing local insight into how roads are used and experienced,” they said.

“Following the consultation period, the City of Swan will



A 40kmh limit could allow for more trees, seating, and community spaces. Picture: Brayden Mould.

review the feedback received and determine whether it wishes to progress the proposal to Main Roads for consideration.

“The outcomes of that consultation are considered alongside technical assessments, such as crash history, traffic volumes, road environment, and network function.”

The comment window remains open until July 13 with submissions accepted through the Swan Engage platform.

Residents can also visit an in-person pop-up stall near the Target entrance at Midland Gate from 10am on Saturday, July 4 to view the project details and submit feedback.

Kalamunda footballers raising road safety awareness



Community members gathered to enjoy games of football and also rally around the message of better road safety.

THE Kalamunda and Districts Junior Football Club (KDJFC) has joined the push to raise awareness of road safety by promoting responsible driving.

The football club held a road safety awareness event on June 28 with the support of WA Police, the Road Safety Commission, City of Kalamunda Mayor Margaret Thomas, Road Safety Minister Reece Whitby and club sponsors.

The event forms part of SportWest’s Best on Road program, which works with sporting clubs across the state to encourage safer driving and positive road safety behaviours, particularly among young people.

The state government recently announced an extra \$560,000 to expand the program, bringing its total investment to more than \$2.54 million.

The funding will allow SportWest to continue working with clubs and organisations to deliver road safety education through community sport.

The Best on Road program rewards clubs promoting road safety, educates young sporting leaders to share road safety messages with teammates and recognises organisations making outstanding contributions to road safety awareness.

More than 140 sporting organisations and 5500 clubs are connected through SportWest, providing an opportunity to reach hundreds of thousands of participants across the state.

KDJFC took to social media to thank club president Jodie Szabo, committee members, volunteers and supporters for organising the event.

“(There) was two great games to watch with the boys grabbing the win in the last 10 minutes of the game after being down all match,” the club said.

“Thank you, Bayswater and Coolbinia, for putting on good fights.

“Thanks to all those who came down to watch – we can’t wait to do more things like this in the

future.”

Mr Whitby said sporting clubs were well placed to promote responsible behaviour because they already played an important role in bringing communities together.

“Sport is a universal language that brings people together on all levels and gets them talking and engaged,” he said.

“There are many parallels in sport that we can apply to road safety with the importance of teamwork, discipline and responsibility to play your part to be successful.”

Mr Whitby said the state government partnership with SportWest was a great way to engage and promote the importance of road safety to a broader audience.

“This expanded partnership now empowers more sporting clubs to be a driving force for change in road safety behaviour and helping to make WA a safer place,” he said.





Enjoy a Hassle-Free Shopping Experience

Woolworths BWS

<p>FOOD & CAFES</p> <p>Midland Kebab & Pizza Café Muzz Buzz La Tazza Café & Catering Daiwo Shiki Midland Chinese BBQ</p>	<p>GIFTS & HOMEWARES</p> <p>Smokemart & Giftbox Smart Dollar</p>
<p>FASHION & ACCESSORIES</p> <p>Martin’s Shoes</p>	<p>HEALTH & BEAUTY</p> <p>Pharmacy 777 Venetian Nails Rad Cuts Barbershop Wang’s Body Care</p>
<p>FOOD & BEVERAGE</p> <p>WA Growers Fresh Highland Bakery & Patisserie</p>	<p>SERVICES</p> <p>Australia Post newsXpress Watches & More Multi Service</p>

SILLY SOLLY’S

NOTHING OVER \$5

NOW OPEN

FUN FOR THE KIDS!



MERMAID MIRRORS & PIRATE SHIPS

Kids Free Craft Workshop

Tuesday 7 & Wednesday 8 July
10am – 1pm daily

Ahoy, little adventurers!

Set sail for a magical ocean-themed school holiday activity at Centrepoint Midland.

Filled with creativity, imagination and hands-on fun, this free workshop is the perfect way to keep the kids entertained these school holidays. Best of all, every child will take home their very own masterpiece from their chosen adventure.

Gather your little mermaids, pirates and explorers and join us for two days of ocean-inspired creative fun!

Suitable for children 3 years and above. Strictly while stocks last. No bookings required.

307 Great Eastern Highway, Midland

www.centrepointhoppingcentre.com.au

CentrepointMidland #midlandcentrepoin



Record \$1.75m fine over worker death

A CONSTRUCTION company has been fined a record \$1.75 million, and ordered to pay \$2661 in costs, over the death of a worker who was struck by a falling structural steel column in the Midland Magistrates Court last month.

The fine is the highest fine ever imposed under WA's workplace safety laws.

AR Constructions (currently in the process of liquidation) pleaded guilty to failing to ensure the health and safety of a worker and, by that failure, causing his death.

The company had been engaged by principal contractor Glask Construction to erect structural steel, including standing columns, at a large industrial construction site in Malaga in July 2024.

In order to erect the steel columns, they were moved by crane using a series of lifting devices to a designated rag bolt assembly, then further secured by a dogger and a rigger.

On the day of the incident, three AR Constructions workers – a crane operator, a dogger and a rigger – were engaged in erecting standing columns at the Malaga site.

The dogger applied a lifting device to the crane's lifting chains, and the column was lifted and suspended 30cm from the ground in anticipation of being placed on the rag bolt assembly by the dogger and rigger.

While the dogger was elsewhere on the site the rigger entered the danger zone of the suspended column. The lifting device failed and the column fell onto the rigger, resulting in fatal injuries.

The lifting device used on the lift (a "Pink Lug") was non-proprie-

tary and was not compliant with the Lifting Standard, not being rated or marked with its working load limit. It resembled other suitable, proprietary lifting devices on site in colour, size and attachment mechanism.

In addition, there were no records on how long it was used for, where it was sourced from, who manufactured it, if it was ever inspected or tested or its rated capacity.

The court heard that the company's directors were aware that the Pink Lug was not rated or compliant but did not remove it from use.

WorkSafe Commissioner Sally North said the case should send a message to employers on the importance of ensuring that all equipment used is safe and fit for use.

"The size of the penalty imposed in this case serves as an important reminder to have safe work procedures in place and to ensure those procedures are known and followed," Ms North said.

"It's common knowledge in industry that lifting devices need to be inspected regularly, rated to lift relevant loads and that the failure of lifting devices exposes workers in the fall zone to the risk of being crushed by falling objects.

"The magistrate found that this incident was at the highest end of seriousness of offending and that the defective lifting equipment ought to have been immediately removed from site when it was identified.

"The failures of the employer led to the tragic loss of this worker, and this should serve as a reminder for employers and workplace leaders to take practicable steps to make sure that workers are provided with a safe workplace, including safe lifting equipment where applicable."

Jan Cooper featured in museum project

CAMILA EGUSQUIZA SANTA CRUZ

FORMER AFL player and Bassendean resident Jan Cooper is part of the WA Museum's Women in Sport project.

Curated by Kylie Elston and Monika Durrer, the project is a collection of stories and meaningful objects that represent the evolution of women's sports.

Alongside other prominent sportswomen, Ms Cooper was interviewed and recorded about her life over the course of several sessions.

Ms Cooper shared her story of growing up near Bassendean Oval, where she cheered for Swan Districts and kicked a footy with her brothers.

She also donated an AFLW football that was used in the first AFLW game.

According to the WA Football Commission, WA was actually the first state to play any women's football.

"It started in 1915 in Western Australia, and the very first Women's League also started in the Goldfields in Kalgoorlie-Boulder in 1921," Ms Cooper said.

When Ms Cooper first learned this, she was excited to uncover any documentation but was soon disappointed.

"My father had a great connection to one of the clubs that the women played for in 1921, and he made some inquiries to see whether they had any memorabilia about the women," she said.

"We also reached out to the other three Kalgoorlie-Boulder-based clubs and there was nothing.

"Not one person could find a photograph, any information, newspaper cuttings, nothing."

The history of women's sport in WA has not been extensively recorded – something Ms Cooper hopes to see changed.

"It's absolutely vital that we show the next generations the people who shaped the sport and what barriers they overcame so that we can provide some enlightenment to the people behind us coming through."

As the AFL national manager of women's and girls' development, Ms Cooper helped to grow female participation from 16,000 in 2005 to 50,000 by 2017.

In 2018, she was appointed by the West Coast Eagles to assist the club's entry into the AFLW com-



Jan Cooper was appointed the Medal of the Order of Australia in June 2021. Picture: Gera Kazakov

petition.

As reported in *Jan Cooper inducted into footy hall of fame* (Echo News, September 15, 2023), Ms Cooper made history as the first woman to be inducted in the WA Football Hall of Fame.

However, despite her extensive career, Ms Cooper said her greatest achievement is quite simple.

"It would be easy to say AFLW, but to be perfectly honest, whilst I'm proud of it, that's not the thing I'm most proud of," she said.

"I just get huge satisfaction when I walk past a park or an oval and see families – daughters, fathers, sons and mums – connecting through AFL.

"In my family, football has been a great vehicle for connecting through generations – there's nothing like feeling that sense of tribal connection to a group of people when you're all barracking for the same team.

"Knowing I contributed to that really makes my heart feel quite full."

Learn more about the project at <https://visit.museum.wa.gov.au/learn/news-stories/collecting-rise-womens-sport>

Be involved in our exclusive advertising features

Healthy Living

Feature

10 July 2026

Keep it Local Feature

17 July 2026

Focus on Seniors

Feature

24 July 2026

Call Karon on 9374 6610 or email karon.m@echo-news.com

ECHO NEWS

www.echonepaper.com.au



The Wuthering Heights flashmob in Stirling Square, Guildford last year. (Inset) Co-organiser Steph Radis with late husband Chris and son Thomas.

Wuthering Heights flashmob fundraiser

WUTHERING Heights fans have the chance again to take part in a Kate Bush inspired flashmob out on the wily windy moors of Middle Swan.

Participants don a red dress and frosty green eye shadow and recreate the song's striking 1978 video. Wuthering Heights Day is a global event where people dress up as Kate Bush on or around her July 30th birthday.

The event will take place in the grounds of the Swan Italian Club on Saturday, July 18 from 2.30pm.

People are asked to donate, to dance and support a refreshment stall and raffle.

Co-organiser Steph Radis said last year's event held in Guildford attracted around 100 Cathys of all ages.

Through the flashmob Mrs Radis raises money for Lung Foundation Australia in honour of her husband Chris who was diagnosed with lung cancer and sadly passed away in 2021.

It was during her husband's time living with lung cancer that she followed Lung Foundation Australia on Facebook and discovered it offered her valuable information and guidance.

After Chris passed away, her friend Hazel mentioned there was a Kate Bush Wuthering Heights Day cancer fundraiser in Bunbury.

"Hazel and I have always liked Kate Bush's music

and when we heard there was a whole event around it, we couldn't get in the car quickly enough," she said.

"We loved the wonderful vibe at the event and meeting all the other Cathys/Kates for a good cause."

It was this event that sparked Mrs Radis' own inspiration to organise her own Wuthering Heights Day fundraiser.

"We held the first event in 2023 and started fundraising for Lung Foundation Australia in honour of Chris.

"We didn't know if 10 or 100 Kates would show up but Hazel and I wanted to do something to raise awareness about lung cancer and lung disease in general.

"Chris loved music and volunteered his time for community groups. I know he would love that this event is in his honour and raising money for lung cancer research."

The event has grown each year and Mrs Radis says the highlight is seeing people from all walks of life come to celebrate.

"There are plenty of videos online posted to our Facebook page that teach the moves to the song.

"But it's really just a bit of fun, open to all ages and levels of fitness."

The event will be presented by Cocos Radio, an internet streaming station she founded in Chris's honour.

Concerns remain over Bassendean CCTV

CAMILA EGUSQUIZA SANTA CRUZ

WHILE the Town of Bassendean has received a \$20,343 state government grant to install CCTV at the intersection of Old Perth Road and Parker Street, community concerns remain.

As reported in *Bassendean residents petition for safer street* (Echo News, March 27), 34 businesses signed a petition in March to urge council to install CCTV along the length of Old Perth Road and improve lighting to address rising crime.

Town of Bassendean's chief executive officer Cameron Woods said the grant will fund one CCTV camera, which is expected to be operational by the end of September.

"The grant-funded camera will provide targeted coverage at this location and will form part of the town's broader community safety strategy and CCTV plan, which was approved by council on June 23," he said.

"The CCTV plan will guide future decisions about additional cameras, including potential locations along Old Perth Road and other areas of the town, and sits within a more coordinated approach to community safety."

Mr Woods said the town recognises community safety is a shared responsibility and its role includes improving the design, maintenance and activation of public spaces, delivering regulatory and community services, and working with key partners including WA Police, community organisations and residents.

"This includes existing initiatives such as street lighting improvements, graffiti removal, public open space maintenance, ranger and environmental health services, community education, the CCTV rebate scheme, Safe Active Streets and road safety work with Main Roads WA," he said.



35 local governments will share \$1 million in funding in the latest round of CCTV grants program. Picture: Camila Egusquiza Santa Cruz

"The town will continue to consider practical and achievable safety measures that support the plan's focus on reducing antisocial behaviour, improving perceptions of safety and creating welcoming public spaces."

Creator of the petition and long-time Bassendean resident Manuel Sammut said the town should be doing more to protect residents' safety.

"This doesn't feel like a win for the community. It's one camera – people are going to look at it and move their trouble elsewhere in the road," he said.

"The lighting hasn't improved either – when you come in the evening there aren't enough lights and it's quite dark."

"We need cameras all throughout the Old Perth Road. They are installing the camera in a good spot, but we need more of them."

While the town already operates CCTV to monitor its own facilities along Old Perth Road, it currently has no operational cameras monitoring Old Perth Road itself.

Town moves to reclaim historic cottage



The cottage is recognised by heritage registers and regarded as the oldest surviving building in Bassendean. Picture: Bassendean Historical Society

GUANHAO CHENG

THE Town of Bassendean has moved to bring the heritage-listed Pensioner Guard Cottage at 1 Surrey Street back into public ownership after deciding the property's restoration had not progressed under an agreement with the Perth History Association (PHA).

Council reaffirmed its December 2025 decision at its latest ordinary council meeting, authorising their chief executive officer to continue the process of transferring the property's title back to the town.

The cottage, built in 1856 or early 1857 for Pensioner Guard John Law Davis, is recognised on both the National Trust of Western Australia register and the State Register of Heritage Places, and is regarded as the oldest surviving building in Bassendean.

The town originally transferred the property to PHA under an agreement requiring the organisation to restore the site in exchange for ownership.

According to the town, it regularly sought progress updates before the agreement expired in December 2025 but concluded the required restoration works had not progressed and that PHA had been unable to demonstrate the financial capacity to complete the project within a timeframe acceptable to the town.

The town said a formal dispute resolution process failed to resolve the matter before arbitration was pursued under the agreement.

It alleges PHA did not engage in that process, prompting the town to exercise its contractual right to proceed with settlement.

Town of Bassendean Mayor Kath Hamilton said council's actions reflect a strong commitment to the responsible stewardship of the town's-built heritage.

"The pensioner guard cottage is an irreplaceable

part of Bassendean's story (and) bringing the site back into town ownership allows us to ensure it is protected and to carefully plan for its restoration and future community use," she said.

According to the town, should the site return to town ownership, council would look to carefully plan for restoration and investigate potential future uses that support community access and engagement, including education, exhibitions, community and arts activities, or other complementary uses.

Bassendean resident Gerry Coleman said while he welcomed efforts to preserve the building, he questioned how the town would fund the restoration and ongoing maintenance.

Mr Coleman said the town had previously determined it did not have the financial capacity to undertake the works before transferring the property and believed residents would want to understand what had changed.

"Where is the money coming from to maintain and transform this?" he said.

"With the recent Wind in the Willows situation and the need to renovate and refurbish the cottage into something usable for the community, the question is where will the town get the money to fund this cottage even if they acquire it?"

Acting chief executive officer Shane Asmus said since entering the original agreement with PHA, the town had significantly strengthened its financial position.

"Prudent financial management in recent years has increased reserves, improved long-term planning, and reduced cost pressures, placing the town on a much stronger footing to deliver complex projects," he said

Cont. p18.

ECHO NEWS
SINCE 1985

SUBSCRIBE NOW

Get your **FREE** Echo News direct to your inbox every week

Or pick up your Echo Newspaper from:

Go to our website

www.echonepaper.com.au

& click on the Subscription link in the top right hand corner



- AVELEY:**
Aveley Newsagency
Cnr Millhouse Rd & Egerton Dr
- Aveley Shopping Centre**
Cnr Millhouse Rd & Egerton Dr
- BASSEDEAN:**
Bassendean Library
46 Old Perth Rd
- Bassendean Shopping Village**
Cnr West & Old Perth Rd
- BEECHBORO:**
Beechboro Library
332 Benara Rd
- BOYA:**
Boya Community Centre
Clayton Rd & Scott St
- BULLSBROOK:**
Kingsford Village S/Centre
Woolworths
Spitfire St & Wylde Blvd
- CHIDLOW:**
Chidlow Growers Market
570 Rosedale Rd
- Chidlow Postal & Home Centre**
Thomas St
- DARLINGTON:**
Darlington Liquor
4 Montrose Ave
- EDEN HILL:**
Eden Hill News & LPO
S3/85 Walter Rd
- ELLENBROOK:**
Dome
36 Main Street
- Ellenbrook Central**
204 Pinaster Rd (cnr The Promenade)
- Woodlake Village IGA**
Sunray Circle
- FORRESTFIELD:**
Edinburgh Road S/Centre
Edinburgh Rd
- Forrestfield Forum**
20 Strelitzia Ave
- Walridge Country Estate**
Berkshire Rd
- GIDGEGANNUP:**
Gidgegannup News
Toodyay Rd
- GLEN FORREST:**
Glen Forrest Post Office
Railway Pde
- IGA Glen Forrest**
Hardey Rd
- HELENA VALLEY:**
Helena Valley Lifestyle Village
2340 Helena Valley Rd
- IGA Helena Valley**
Torquata Blvd
- HERNE HILL:**
Herne Hill Village Lottery Centre
777 Gt Northern Hwy
- Swan Settlers Market**
124 Lennard St
- HIGH WYCOMBE:**
High Wycombe Village Shopping
Kalamunda Rd
- Newburn Newsagency**
47 Newburn Rd
- The Village Supa IGA**
120 Wittenoom St
- KALAMUNDA:**
City of Kalamunda
Railway Rd
- Crabbs IGA**
12 Canning Road
- Kalamunda Centro S/Centre**
39 Railway Rd
- Kalamunda Library**
7 Williams St
- Kalamunda Newsagency**
Haynes St
- Nightingales Pharmacy**
123 Canning Rd
- Jack Healey Centre**
21 Mead St
- KOONGAMIA:**
Koongamia Store
5/21 Jinda Rd
- LESMURDIE:**
IGA Lesmurdie
241 Lesmurdie Rd
- Sanderson Road S/Centre**
Sanderson Rd
- MAHOGANY CREEK:**
Begonia Pets
5895 Great Eastern Hwy
- MAIDA VALE:**
Hill View Public Golf Course
350 Kalamunda Rd
- Maida Vale IGA**
Unit 2/31 Maida Vale Rd
- MIDLAND:**
Baptistcare
1A North St
- Centrepoint S/Centre**
307 Great Eastern Hwy
- City of Swan Admin. Office**
Morrison Rd
- Crooked Spire**
71 Victoria Street
- Echo News Office**
4/9 The Avenue
- Greg's Discount Drug Store**
243 Great Eastern Hwy
- IGA Supermarket**
295 Great Eastern Hwy
- Midland Library**
45 Helena Street
- Midland Gate S/Centre**
Food Hall Entry
- Real Estate Plus**
Shop 2/5 Junction Parade
- Swan Valley Fresh Markets**
Cnr Morrison Rd & Keane St
- Tania Lawrence Office**
2/257 Gt Eastern Hwy
- The Ritz Cafe**
16/27 Old Great Northern Hwy
- MT HELENA:**
IGA Mt Helena
McVicar Pl
- MUNDARING:**
Brookwood Realty
2/1 Mundaring Weir Rd
- Coles Supermarket**
Great Eastern Hwy
- Hills Fresh**
7110 Great Eastern Hwy
- Hills Seafood**
4 Wandeara Cres
- Mundaring Newsagency**
7295 Great Eastern Hwy
- Mundaring Village Shopping Centre**
7295 Great Eastern Hwy
- Mundaring Visitors Centre**
7225 Great Eastern Hwy
- Shire of Mundaring**
7000 Great Eastern Hwy
- PARKERVILLE:**
Parkerville General Store
2170 Seaborne St
- SAWYERS VALLEY:**
Atlas Fuel
10895 Great Eastern Hwy
- Caltex Service Station**
96 Great Eastern Hwy
- SOUTH GUILDFORD:**
IGA Waterhall
9 Waterhall Rd
- STONEVILLE:**
Stoneville Fresh Food Market
5345 Richardson Rd
- STRATTON:**
Stratton Park S/Centre
O'Connor Rd
- SWAN VIEW:**
IGA Swan View
139 Morrison Rd
- Swan View S/Centre**
Marlboro Rd
- THE LAKES**
The Lakes Roadhouse
Great Eastern Highway
- UPPER SWAN:**
Vibe Roadhouse
1447 Great Northern Hwy
- WOOROLOO:**
Wooroloo Liquor & General Store
3775 Government Rd
- YORK:**
York Co-op
Avon Terrace
- Castle Hotel**
Avon Terrace

Privately owned & proudly independent



SES volunteers help to clean up after storm damage.

Mundaring SES calls for more volunteers

MIKE PEETERS

MUNDARING State Emergency Service (SES) unit is gearing up for a busy winter and welcomes new volunteers to cope with the expected increase in storm and flood damage.

Mundaring SES manager Rod Potter said they currently had about 30 members some of whom had been with the unit for as long as 40 years.

“We are hoping to get that number up to 40 volunteers in the near future which would assist us greatly when responding to calls of support,” he said.

“As local volunteers we are committed to helping each other and our community.

“So I would like to encourage people to get involved and help out the community in times of need.”

Mr Potter said storm damage usually involved the removal of trees or branches from roofs and shoring up of walls and roof sections as well as covering holes in roofs.

“The weeks following a storm can result in the fall of branches that have weakened during the storm,” he said.

“It is therefore important for householders to check the trees around their property and arrange removal of po-

tentially dangerous branches or trees. “Not just after a storm, but as a regular home safety activity.”

An all-year activity for the SES crew is also to support fire crews battling fires locally and regionally.

“SES members have clocked up many kilometres driving fire crews to and from fire control areas, as well as assisting the Department of Fire and Emergency Services (DFES) communications at the fire control areas,” Mr Potter said.

“At Mundaring SES we always welcome more members and encourage you to contact us and find out what we do and how you can fit into SES.

“There are many different roles within SES and always opportunities to specialise in particular roles.

“Additionally, we schedule several social activities throughout the year to build community and celebrate and reward members, as well as fundraisers such as sausage sizzles and camps.

“We also hold a Wednesday night try out for people who are interested in volunteering.”

For more information please contact Mr Potter on 0474 583 813 to find out more or come for a Wednesday tryout evening.

Casa Mia Montessori school finds its forever home at Rivermark site



Concept drawings of the new Casa Mia Montessori Community School at Rivermark.

AFTER serving Bassendean families for more than 25 years Casa Mia Montessori Community School will establish a new, purpose-built campus at Rivermark in the Viveash estate – just 15 minutes from its original home.

Casa Mia principal Samantha Leyton said finding the right home for the school had been the community’s highest priority.

“We were drawn to the Rivermark site as it offered Casa Mia a permanent home in a community that shares our deep commitment to nature and the environment,” she said.

“The new campus will be designed around Montessori principles, with a strong emphasis on connection to nature, flexible learning spaces, and a ‘living learning landscape’ featuring significant tree canopy and natural play areas – values that sit naturally alongside Rivermark’s own ecologically led ethos.”

A staged development is planned, with the first phase of the new campus targeted to open in 2028 and catering to children aged 3 to 12.

Additional classrooms and facilities will be added in line with demand as the school grows, with a long-term vision to accommodate up to approximately 150 students.

Hesperia’s residential director Grant Shepherd said integrating community focused infrastructure into Rivermark has always been central to the estate’s vision.



“Our goal for Rivermark has always been to create an environment that delivers genuine long-term value for the families who live here,” he said.

“Securing a school with Casa Mia’s reputation and long-term commitment to this site is a meaningful step towards that vision.”

The purchase of land represents a significant milestone, positioning Casa Mia among a small number of Montessori schools nationwide to own and develop a purpose-built campus.

Established in 1999 by a small group of homeschooling families, Casa Mia currently has 73 students and a growing waiting list.

The addition of Casa Mia comes ahead of Rivermark’s next land release, with Stage 6 anticipated next year as the estate continues development towards the banks of the Swan River in Viveash.

Bibbulman Track raffle for maintenance

THE Bibbulmun Track Foundation is calling on Perth Hills residents to help maintain one of the state’s best-known walking trails through its 2026 Adventure Raffle.

With the northern terminus located in Kalamunda, funds raised will help maintain the track’s shelters, infrastructure and walking surface so the nearly 1000km trail remains safe and accessible for walkers travelling from Kalamunda to Albany.

The track is a popular destination for day walkers in the Perth Hills and the starting point for thousands of people who tackle sections of the iconic trail each year, contributing to tourism and supporting businesses in communities along its route.

Bibbulmun Track Foundation chief executive officer Su-Mita Hill said the annual raffle helped sustain both the track and the regional communities connected by it.

“The Bibbulmun Track is not only a treasured natural asset, it is also an important part of many regional communities,” she said.

“Funds from this raffle go directly towards maintaining the Track, including shelters and track infrastructure, which helps ensure safe and accessible experiences for walkers visiting these regions.”

According to the foundation, maintaining the track also supports sustainable visitation to regional towns, preserves natural environments and encourages outdoor recreation across the southwest.

Participants in the raffle will go into the draw to win prizes including a \$6000 Intrepid Travel adventure, outdoor equipment and hiking gear donated by supporting businesses.

Funds raised through the raffle will help support the more than 450 volunteers who contribute thousands of hours each year to maintaining and caring for the Bibbulmun Track.

The Bibbulmun Track Foundation recruits, trains and coordinates this volunteer network, providing the skills, equipment and support needed to undertake essential conservation and maintenance work



BTF volunteers maintaining the timber shelter at Waalegh campsite.

along the 1000km track.

A recent example was a volunteer field day in the Perth Hills, where volunteers spent the day carrying out maintenance at a track shelter.

The team cleared overgrown vegetation, cleaned gutters and water systems, refreshed signage, maintained timber structures and undertook track works training including waterbar and step installation.

These field days, held regularly throughout the year, help ensure the Bibbulmun Track remains safe, sustainable and accessible for the thousands of walkers who enjoy it each year.

Tickets are available online through the Bibbulmun Track Foundation’s Adventure Raffle campaign at tinyurl.com/yvcv48bk2

ECHO NEWS

SINCE 1985

- ✓ **Guaranteed to reach your target audience.**
- ✓ **Printed weekly edition reaching 35 suburbs with 80 bulk stands.**
- ✓ **Online web presence with 1.2 million hits in the last 12 months.**
- ✓ **Weekly email to all subscribers with local news and events.**

Read the latest news online

ECHO

Always in front!

sales@echo-news.com | editorial@echo-news.com
Suite 4, 9 The Avenue, Midland | 9374 6666

ARTS ENTERTAINMENT

Zig Zag's Kaaditj solo exhibition on memory and understanding



Noongar and Yamatji photographer and sculptor Wesley Jackson. Pictures: Zig Zag Gallery.

THIS July, The Zig Zag Gallery will host Kaaditj, the first solo exhibition by Noongar and Yamatji photographer and sculptor Wesley Jackson.

Presented as part of the City of Kalamunda's 2026 NAIDOC week program, the event features Mr Jackson as Kalamunda's NAIDOC Emerging Artist of 2026.

The exhibition title comes from the Noongar word meaning to understand, know, listen, or hold knowledge, reflecting the artist's focus on understanding cultural knowledge and history.

The multi-medium display uses pho-

tography and sculpture to look back at the past through a personal and cultural lens.

The collection of work will be displayed in three distinct chapters titled Life, Destruction, and Regrowth, to guide viewers through a deliberate artistic narrative.

The chapters will trace the deep relationship between people and land, the disruption caused by culture being suppressed, and the renewal and reclaiming of knowledge carried forward.

Fire will feature heavily throughout the display, shown both as a symbol and as a practical tool used in traditional land

management and bush regeneration.

Visitors to the gallery can expect to see a diverse range of physical art, including framed photographic prints alongside sculptural pieces.

Mr Jackson's previous works have been displayed in various group exhibitions, print media, and government buildings across Western Australia.

The exhibition is free to attend and runs from Saturday, July 4 to Sunday, July 26 at 50 Railway Road, Kalamunda.

The gallery is open from 9am to 4pm on weekdays, and 10am to 4pm on weekends and public holidays.

Zoology comes to Kalamunda Performing Arts

FOLLOWING its world premiere at the Perth Institute of Contemporary Arts (PICA) and the WA Museum as a full-length showcase, independent interdisciplinary theatre company **Too Close to the Sun** will bring their striking contemporary production, **Zoology**, to the Kalamunda Performing Arts Centre (KPAC) on Friday, July 24.

"Too Close to the Sun is a defining voice in Perth's live art and theatre-making community," PICA chief executive officer Hannah Mathews said.

"Zoology is an extraordinary work about really big, really important, critical things," WA Museum (Boola Bardip) creative producer Henry Slade said.

"Walking out of Zoology felt like waking up from a dream."

Written and performed by award-winning Perth (Boorloo) based poet and performance maker Talya Rubin, and directed by Nick James, Zoology is a subverted performance lecture that seamlessly blends theatre, ritual, dance, and dream.

The 65-minute work about the current extinction crisis was inspired by slides found in a New York City antique shop of zoo animals in vibrant 1980s Ektachrome colours.

In the work, the animals tell their wordless story through movement that has absurdity and poignancy at its core.

The concept was born from Rubin's childhood dream that she wanted to be "a ballerina and a gorilla" when she grew up.

To ground the work's childhood themes, Rubin is joined on stage by two local young performers between the ages of nine and 11.

Zoology offers Perth Hills audiences a rare, visceral reconnection with inner wildness and a profound space for reflection.

The 65-minute performance of Zoology by Too Close to the Sun will be held at the Kalamunda Performing Arts Centre (KPAC), 48 Canning Road, Kalamunda on Friday, July 24, starting at 7:30pm.

Tickets are available from the KPAC box office or go to <https://kalamundapac.com.au/events/too-close-to-the-sun/>



Too Close to the Sun brings Zoology to Kalamunda.

ENTERTAINMENT & GIG GUIDE

Your local Gig Guide

Fri July 3

Settlers House York
Graeme Fisher
From 5.30pm, Free
125 Avon Terrace, York

Parkerville Tavern
Cush
From 5.30pm, Free
6 Owen Road
Parkerville

Mahogany Inn & Distillery
Table for Two
6pm-9pm, Free
4260 Great Eastern Hwy
Mahogany Creek

Sat July 4

Woodbridge Hotel
Jamm'n
From 8pm, Free
50 East St, Guildford

Mahogany Inn & Distillery
Shane Turner
6pm-9pm, Free
4260 Great Eastern Hwy
Mahogany Creek

Sun July 5

Settlers House York
Lez Karski
12pm-3pm, Free
125 Avon Terrace, York

Parkerville Tavern
Table for Two
From 3pm, Free
6 Owen Road
Parkerville

Woodbridge Hotel
Kane Cahill
From 3pm, Free
50 East St, Guildford

Chidlow Tavern
Monthly Jam Session
12.30-3.30pm, Free
4 Thomas St Chidlow

Sun July 5 Cont.

Mahogany Inn & Distillery
Rhay Rom and Chantel
4pm-7pm, Free
4260 Great Eastern Hwy
Mahogany Creek

Tues July 7

Mahogany Inn & Distillery
Smooth Groove
6pm-8.30pm, Free
4260 Great Eastern Hwy
Mahogany Creek

Woodbridge Hotel
Ravenswing
From 6pm, Free
50 East St, Guildford

Wed July 8

Chidlow Tavern
Wednesday Night
Jam Session
From 7pm, Free
4 Thomas St Chidlow

Mahogany Inn & Distillery
Acoustic Open Mic
Night Presented by
Fenton and Friends
6pm-9pm, Free
4260 Great Eastern Hwy
Mahogany Creek

Thu July 9

Mahogany Inn & Distillery
Neil Adams
5.30pm-8.30pm, Free
4260 Great Eastern Hwy
Mahogany Creek

Woodbridge Hotel
The Healys
From 6pm, Free
50 East St, Guildford

Promote
your event



SCAN ME
ENTERTAINMENT
& GIG GUIDE

OPTION 1 Large Display Banner

Linking directly to your website or ticketing outlet. \$100 p/w

OPTION 2 Half Display Banner

Linking directly to your website or ticketing outlet. \$50 p/w

OPTION 3 Free Text Listing

Contact Peter for more information
on 9374 6605 or peter.lewis@echo-news.com
www.echonepaper.com.au

ECHO NEWS

Connect with us



Sign up to our FREE monthly e-news by scanning the QR code.

kalamunda.wa.gov.au/newsletters

Stay connected through socials.

@cityofkalamunda



Kalamunda View

News from your City | July 2026



Mayor's MESSAGE

July marks a time of transition as we move into the new financial year.

Here at the City of Kalamunda, we're heading into the year ahead

following the adoption of the 2026/2027 budget at the 23 June Ordinary Council Meeting. Like many local governments, this budget has been set during a challenging period, with a number of external pressures to navigate. What this means for residents is that the schedule of fees and charges for the new financial year will now be updated, and rates notices for 2026/2027 will be issued in mid-July. We're grateful to all the residents who took the time to share their feedback and have their say.

July also brings an important week of celebration, with NAIDOC Week taking place from 5-12 July 2026. This year's theme, 50 Years of Deadly, marks a significant milestone. It's a tribute to the people who built this movement – the Elders who stood firm, the organisers who created space, the artists who turned resistance into expression, and the communities who continue to show up, year after year.

The City's 2026 NAIDOC Week program will begin with a special opening event on Sunday 5 July at 2pm at Maamba Reserve in Forrestfield. We're also proud to launch the NAIDOC Emerging Artist Exhibition, Kaardtj, with Wesley Jackson. Kaardtj centres on remembering – a return to cultural knowledge through memory and nostalgia. For more information, visit www.kalamunda.wa.gov.au/NAIDOC.

Finally, the school holidays are here. If you're looking for ways to keep the kids entertained, our libraries, History Village and Hartfield Park Recreation Centre have plenty of activities to keep them engaged, inspired and active. You can find out more at www.kalamunda.wa.gov.au/our-city/events-workshops/whats-on/school_holidays. Please note that registration is essential, and a small fee may apply for some activities.

Stay safe and dry, and I look forward to seeing you out and about in the beautiful City of Kalamunda!

Mayor Margaret Thomas JP

Ditch the paper – Go eRates today!



Register today!

Public Agenda Briefing Forum
6:30pm, Tuesday 14 July
Ordinary Council Meeting
6:30pm, Tuesday 28 July
 Administration Centre, Council Chambers

Visit kalamunda.wa.gov.au to view the Agenda

NAIDOC WEEK 2026 50 YEARS OF DEADLY



NAIDOC WEEK
50 YEARS DEADLY
 5-12 JULY 2026

Join us to celebrate **2026 NAIDOC Week**

A week's worth of events reflecting on this year's theme "50 Years of Deadly".

The City is proud to launch its 2026 NAIDOC Program, honouring the theme '50 Years Deadly'!

The program begins at 2pm on Sunday 5 July with a special opening event at Maamba Reserve, Forrestfield. Running through to Friday 10 July, the week features a series of immersive experiences celebrating local Aboriginal culture, including culinary, storytelling and healing activities that foster connection to Country. Scan the QR code for more.



SCHOOL HOLIDAYS IN KALAMUNDA

Looking for ways to keep the kids entertained during the school holidays?

Our local libraries, the History Village, and Recreation Centre are rolling out a vibrant program of winter activities designed to inspire, engage and keep kids moving.

From creative workshops to active sessions, there's something for every interest.

Simply scan the QR code to explore the full lineup. Be quick – registration is essential, and some activities may incur a small fee.



FREE CADDY LINERS FOR 2026/2027

From 1 July, residents in the City of Kalamunda can collect their two FREE rolls of compostable kitchen caddy liners.

Collect yours by presenting a Waste Entry Pass or proof of residency at selected locations, including the Administration Building, Walliston Transfer Station and local libraries. Limited supplies apply at some sites, with extra rolls available at cost.



EXHIBITION - KAADTIJ

Kaardtj by artist Wes Jackson is an exhibition centred on remembering - a return to cultural knowledge through memory and nostalgia.

- Exhibition Opening: 6pm, Friday 3 July 2026
- Exhibition Dates: Saturday 4 July - Sunday 26 July 2026. (Monday - Friday: 9am - 4pm, Weekends & Public Holidays: 10am - 4pm)

Location: Zig Zag Gallery, 50 Railway Road, Kalamunda



Have Your Say

Join the conversation and contribute to matters happening in your City.

Scan the QR code for more or visit engage.kalamunda.wa.gov.au



Burning Permitted

1 June 2026 – 30 September 2026

During this period no permits are required. Conditions apply.

Contact Us

9257 9999 | enquiries@kalamunda.wa.gov.au
 2 Railway Road, Kalamunda
 PO Box 42 Kalamunda WA 6926



ADVERTISING FEATURE

Locals you can trust



Local Mechanic that you can trust with your vehicle

When budgets are tight, the car service is often first on the chopping block. It's an understandable call, but rarely a money-saving one.

A skipped service doesn't make a problem disappear; it just delays it until it's bigger. The worn brake pad becomes a damaged disc or brake calliper. The small leak becomes a failed component. Regular servicing is one of the few genuine ways to spend less on your car over time, because it catches the cheap fixes before they become expensive ones.

At ABS Auto Midland, we offer a service you can trust. We look at the whole vehicle, not just

the obvious. Brakes, suspension, 4WD systems, tyres, fleet servicing, and yes, EVs too, with fully trained technicians on the team. Electric vehicles still need brakes, tyres and suspension care, and often sooner than people expect. We give you a full report of your vehicle's condition and help you work out what needs to be done now and what can be done later.

We offer a transparent repairs & servicing from a local owned, family run mechanic who lives in the same community that you do.

ABS Auto Midland - (08) 6161 4636

Personalised & Professional Service at Foothills Denture Clinic



At Foothills Denture Clinic, denture repairs can be done while you wait, and denture relines are usually a same day service.

Raynee McArthur is a dental prosthetists', licensed to make all dentures including part acrylic and metal dentures.

The clinic is a Medibank Private Members Choice Provider and an HBF Members Plus Provider. Rebates are available from all other

health funds and we also deal with Veterans Affairs and offer pensioner discounts.

Special arrangements can be made for country clients to reduce the number of visits.

The team are happy to discuss any difficulty or query you may have with your denture – free of charge – and offer a professional service at a reasonable price.

For a free quote call 9250 1733.

ABS

Stay safe today and everyday

- ✓ Logbook Servicing
- ✓ Clutch Service & Replacement Tyres
- ✓ Commercial Brake & Clutch Repairs
- ✓ Interest Free Finance
- ✓ Minor Servicing
- ✓ Steering & Suspension
- ✓ Vehicle Diagnostics
- ✓ Major Service
- ✓ Air Conditioning Service & Repairs
- ✓ 4WD Service
- ✓ Batteries
- ✓ Loan Cars
- ✓ Brake Services & Repair
- ✓ Mechanical Repairs
- ✓ Vehicle Inspections
- ✓ Reconditioning & Machining Services

Book your car in for a service today!



(08) 6161 4636

- Meet the new owners
- Trusted mechanics

www.absautomidland.com.au

SMILE

At Foothills Denture Clinic

New full dentures and partial dentures

New implant retained over dentures

Denture repairs and relines

Sports mouthguards



FOOTHILLS DENTURE CLINIC

Phone

9250 1733

for an appointment



DENTAL PROSTHETIST RAYNEE MCARTHUR

SHOP 4, 16 THE AVENUE, MIDLAND

www.foothillsdenture.com.au

We also deal with Veterans' Affairs and all health funds through HICAPS |

ECHO NEWS

Follow us on our socials to stay in the loop!

And catch the digital newspaper on our website every Thursday!!

Where to find us:

@EchoNewsmidland

@Echo_Newspaper

@EchoNewsWA



echonepaper.com.au

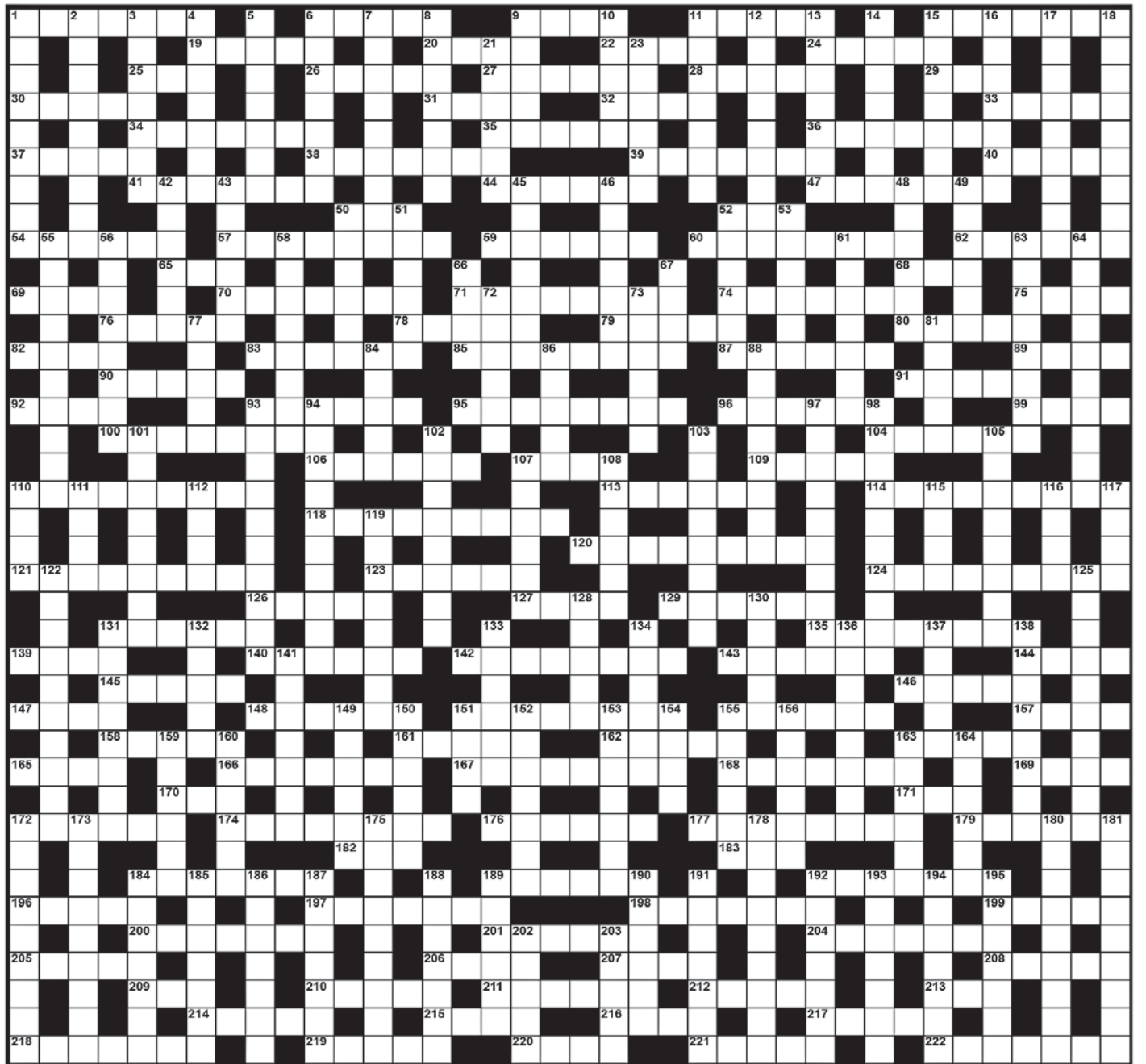


ECHO Notice Board

Upcoming Events

- **The Rosehill Ladies Golf Club** meets each Tuesday at 8am at Hillview Public Golf Club, Kalamunda Road, Maida Vale. The season runs from March to November. For more information call Roz on 0419 915 623 or Julia on 0419 954 106.
- **The Kalamunda Lapidary Club** at 3 Recreation Road, Kalamunda is a club dedicated to collecting, polishing and creating jewellery from natural gem stones and Australian minerals and crystals which they collect in the field. They have an open day on the first Saturday of each month where possible with examples for sale. You can check their Facebook page for current events. For more information call Richard on 0422 181 200
- **Kalamunda RSL** will be holding a bingo night at Kalamunda Agricultural Hall on Saturday, July 11 from 6pm to 8pm. For more information email Colin at cnwjob ling@bigpond.com
- **Kalamunda Ladies Probus Club** meet monthly on the second Thursday of each month at the Jack Healey Centre, Mead Street, Kalamunda at 9am for a 9.30am start. We have morning tea and a guest speaker at each meeting and a monthly bus outing to different interesting places. Socially we meet for coffee once a month and lunch also monthly at different venues in the area. Probus is a social club for retirees who enjoy life. For more information call our president Trish on 0468 309 823.
- **Noticeboard is for non-profits and community groups advertising free/low cost events/programs. Entries must be emailed to editorial@echo-news.com two weeks before the event.**
- **The Rosehill Ladies Golf Club** meets each Tuesday at 8am at Hillview Public Golf Club, Kalamunda Road, Maida Vale. The season runs from March to November. For more information call Roz on 0419 915 623 or Julia on 0419 954 106.
- **The Kalamunda Lapidary Club** at 3 Recreation Road, Kalamunda is a club dedicated to collecting, polishing and creating jewellery from natural gem stones and Australian minerals and crystals which they collect in the field. They have an open day on the first Saturday of each month where possible with examples for sale. You can check their Facebook page for current events. For more information call Richard on 0422 181 200
- **Kalamunda RSL** will be holding a bingo night at Kalamunda Agricultural Hall on Saturday, July 11 from 6pm to 8pm. For more information email Colin at cnwjob ling@bigpond.com
- **Kalamunda Ladies Probus Club** meet monthly on the second Thursday of each month at the Jack Healey Centre, Mead Street, Kalamunda at 9am for a 9.30am start. We have morning tea and a guest speaker at each meeting and a monthly bus outing to different interesting places. Socially we meet for coffee once a month and lunch also monthly at different venues in the area. Probus is a social club for retirees who enjoy life. For more information call our president Trish on 0468 309 823.
- **Noticeboard is for non-profits and community groups advertising free/low cost events/programs. Entries must be emailed to editorial@echo-news.com two weeks before the event.**
- **The Kalamunda Combined Probos Club** will meet on Wednesday July 8 at 10am at St Swithuns Church Hall, 195 Lesmurdie Road, Lesmurdie. Our guest speaker will be Mr Don Briggs who will give a talk on the pioneers of the early Western Australian timber industry. For more information call Don on 0439 970 038
- **Midland CWA** meets at the Midland Railway Yards Blacksmith Lane (West) Midland on the third Wednesday of each month at 10am. CWA flags are displayed on Yelverton Drive, Midland on meeting days. CWA offers a diverse range of interests and each branch works to meet local community needs. Call Cathy on 0460 777 557 or email cwa.midland@outlook.com
- **Mahogany Creek Art and Craft Group** meets weekly on Wednesdays 9.30am to 12.30pm during school terms at the Mahogany Creek Hall on Jacoby Street. Everyone brings along their art or craft to work on in a friendly social group with tea and coffee provided. For more information call Mary on 0431 201 814 or Jan on 6279 4031.
- **Midland Friendly Garden Club** meets at 9.30am on alternate Thursdays at Bruce Douglas Pavilion, Brown Park, Salisbury Road, Swan View. The next meeting will take place on July 9. Our guest speaker will be Jean Evans, member and past president of the Camellia Society of Western Australia, who will be talking about and displaying her favourite flowers. For more information call Jenny on 0424 553 002 or Barbara on 0482 935 686.

ECHO Mind Boggler Crossword 1275



ACROSS

- 1 Aged
- 6 Parts of a tribe
- 9 Cry of pain
- 11 A type of tree
- 15 Amount left over
- 19 Discharge
- 20 Poor journalist
- 22 Slight pain
- 24 Quickly
- 25 A firearm
- 26 Papal order
- 27 Like a lout
- 28 Illegal burning
- 29 Pitch
- 30 An echo sounder
- 31 A nodule
- 32 Type of powder
- 33 Local language
- 34 Put up with
- 35 One of two
- 36 Nautical rope
- 37 Ways to leave
- 38 Obvious
- 39 Not Jewish
- 40 Arabian chief
- 41 Put burden on
- 44 Way of standing
- 47 Sealed bags
- 50 Crow call
- 52 As well as
- 54 Waver
- 57 Horrified
- 59 Showed pleasure
- 60 Placed in front
- 62 Belong intrinsically
- 65 Battery charge measure
- 68 Crowd
- 69 Amaze
- 70 Turned inwards
- 71 Things used
- 74 Tree coverings
- 75 Strong cord
- 76 Fear greatly
- 78 Live coal
- 79 Social group
- 80 Girls' toys
- 82 Amplifiers (coll)
- 83 Be present at
- 85 Way through
- 87 Type of jacket
- 89 Looked over
- 90 Waste meat
- 91 Amulet etc
- 92 First man
- 93 Things to discuss
- 95 Chided
- 96 Scatters around
- 99 Other than one mentioned

- 100 Made lovable
- 104 Surgical drill
- 106 Spoken slur
- 107 Former cloth measures
- 109 Coconut product
- 110 Sweats
- 113 Total
- 114 Forms an opinion
- 118 Rivals
- 120 One seeking job
- 121 Of a mind disease
- 123 Together
- 124 A gift
- 126 Kingdom
- 127 Strong flavour
- 129 Deed
- 131 Several types
- 135 Providers
- 139 Bring up
- 140 Large boar
- 142 Type of fruit
- 143 Cringes
- 144 On top
- 145 Friendship
- 146 Neckband
- 147 Female deer
- 148 Smart
- 151 Remodelled
- 155 Large number of
- 157 Be unsuccessful
- 158 Golf clubs
- 161 Stop at sea
- 162 Battery pole
- 163 Brownish colour
- 165 Pool of money
- 166 Drink vessels
- 167 Learners
- 168 One in control
- 169 Massages
- 170 Historic time
- 171 Naughty child
- 172 A punter
- 174 Church spires
- 176 Pebble
- 177 Relied on
- 179 Whirlpools
- 182 Form of address
- 183 Bright colour
- 184 Women's garments
- 189 Climb up
- 192 Stopped suddenly
- 196 Stop from entry
- 197 Levelling out
- 198 A leper
- 199 Celebrate loudly
- 200 Very old
- 201 With desires
- 204 A calendar
- 205 Type of flower
- 206 Defensive ditch

- 207 An illness
 - 208 The sea
 - 209 Outfit
 - 210 Woodwork tool
 - 211 Swipe
 - 212 Pigs
 - 213 Mistake
 - 214 Wear away
 - 215 Learning by repetition
 - 216 Prefix "formerly" (arch)
 - 217 Mineral finds
 - 218 Posers
 - 219 Comes up
 - 220 Tear apart
 - 221 A fibre
 - 222 Tree products
- ### DOWN
- 1 Dampened
 - 2 Not permanent
 - 3 Got back
 - 4 Removed coverings
 - 5 Not engaged in war
 - 6 Fixed with studs
 - 7 Sensible
 - 8 Set aside
 - 9 Type of giraffe
 - 10 Hurry
 - 11 Warning lights
 - 12 Strong
 - 13 Looks after
 - 14 Casual in speech
 - 15 Go over again
 - 16 Long steps
 - 17 Attention to task
 - 18 Count up
 - 21 Heavenly bodies
 - 23 Fee
 - 42 Roughen
 - 43 Hung loosely
 - 45 Moods
 - 46 A crack
 - 48 Damaged
 - 49 Of clans
 - 50 Put covering on
 - 51 Joined metals
 - 52 Type of horn
 - 53 Slander
 - 55 Frighten
 - 56 Good-looking
 - 58 Good standing
 - 61 Exact copying
 - 63 Equine riders
 - 64 Holding in
 - 66 A dice
 - 67 Whispered call
 - 72 A riddle
 - 73 Pierced a boil

- 77 Lessen
- 81 Type of earth
- 84 Lumpy pieces
- 86 Put on list
- 88 Thought likely
- 93 One well-respected
- 94 Paper articles
- 97 Sight
- 98 Invoices
- 101 Drink of forgetfulness
- 102 Tribal
- 103 Wisdom
- 105 Strength of Air Force
- 107 Still existing
- 108 Malayan wrap
- 110 Practical test (abb)
- 111 A break
- 112 Horse colour
- 115 Made into enough
- 116 Rescue
- 117 Tender
- 119 Fattest
- 122 Loyalty
- 125 Can be discussed
- 128 In want
- 130 Satire
- 131 A slope
- 132 ... John
- 133 Prettiest
- 134 Fervent
- 136 Put in order
- 137 Pleat in garment
- 138 Endured
- 141 Do better than

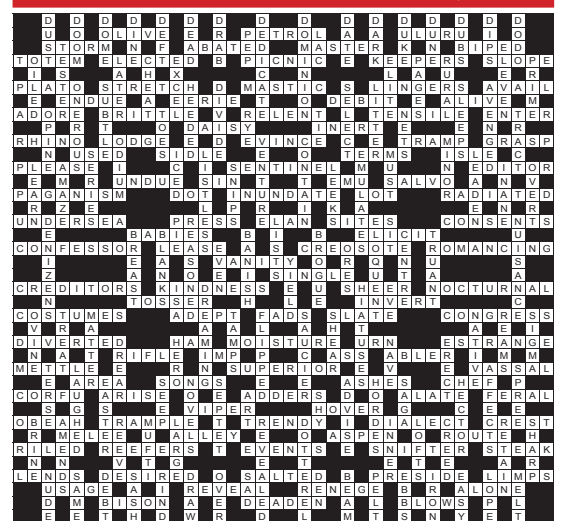
- 149 Undermines one's position
- 150 Christian festival
- 151 Grate
- 152 Artists' workrooms
- 153 Portable light
- 154 Medicine portion
- 155 One of a club
- 156 Travelled over
- 159 Do too much
- 160 Circulation stoppage
- 163 Of a bride
- 164 Hamper
- 172 Houses of ill-fame
- 173 Mixed wildly
- 175 Sets free
- 178 Fines
- 180 Cheeky behaviour
- 181 Guards
- 184 To rustle loudly
- 185 Tells from memory
- 186 Voter
- 187 A pioneer
- 188 Stews lightly
- 189 Appalled
- 190 Dingo catcher
- 191 Gives evidence
- 192 Victorian town
- 193 Types of nuts
- 194 Lengthiest
- 195 Good behaviour
- 202 Sea mammal
- 203 Unclothed

Woofers of the week



Mary is a three-year-old staffy cross. She is well behaved but a bit of a couch potato due to her owner's ill health. Mary needs a new home but she isn't good with cats. She is sterilised, vaccinated, and microchipped. Costs apply. Contact Bakers Hill Dog Sanctuary on 9574 1438.

Crossword Solution 1274 from 26 June, 2026



ECHO Trades & Services

9374 6666
classifieds@echo-news.com
www.echonepaper.com.au

Bobcats

BOBCAT - TRUCK EXCAVATOR ROCKBREAKER

- Bobcat works, Earthworks & Truck Hire
- Driveways - Removals / Prep / Construct
- Excavation / Trenches / Drainage / Soakwells
- Shed & Tank Pads / Rockbreaking & more ...

Reliable Service **DAVE 0417 096 614**
DW Cartage & Earthworks

MIDLAND BOBCAT HIRE

BOBCATS, 8 & 12 TON TIPPERS, MINI EXCAVATORS

Free no obligation quotes and advice

Russell & Lynn Edwards
Owner/Operator

Russell: 0417 957 597
russlynn4@bigpond.com

Carpentry

Carpentry • Joinery • Cabinetmaking and Home Maintenance Services

- Doors • Decks • Skirting • Sash Windows
- Robes • Kitchen Installations
- Flatpacks • Pergolas • Furniture Repairs

Pensioners Discount Fully Qualified
Free Quote Call Mal 0400 250 761

CARPENTER/CABINET MAKER

Sash Window Repairs / Renovations, Kitchens, Laundries, Robes & Vanities made and fitted. Doors, Frames & Architraves. Skirting & Shelving. 40 years experience.

NO JOB TOO SMALL. Call Terry
0401 743 027 / 9295 0797
telcocarpentry@bigpond.com

MORGAN CARPENTRY & MAINTENANCE SERVICES

ALL ASPECTS OF CARPENTRY & MAINTENANCE WORK

- 15yrs commercial & residential experience • Insured
- Fully qualified, professional & reliable • No call out fee
- Full police clearance • Pensioners discount

Call Kevin **0450 538 596**
www.morgancarpentry.com.au e:Kidd.morgan@hotmail.com

Ceilings

CA INSTALLATIONS

- Ceilings & Walls • All Facets of Ceiling Work
- Domestic & Commercial • Office Partitioning

All Reno Work Local and Loyal
0409 953 369

CEILING & WALL RESTORATION

ALL SMALL JOBS
ALL REPAIRS & NEW ADDITIONS
23 YEARS EXPERIENCE

9295 2041 OR 0402 270 688

Concrete

B.C. CONCRETE DESIGN

Cracked Pea Gravel/Exposed Aggregate
Crossovers • Shed Floors • Drives
House Extensions • Patios
Bobcat & Truck

Call Anytime **0457 611 348**

SUNJICH'S CONCRETE

- Bobcat - Truck and Compaction
- From Prep to Completion

FREE Quotes All Areas
Call Zeljko
0417 902 301

TIGER CONCRETE

FREE QUOTES • NO MESS NO FUSS
Quality work, all types of concreting

Bobcat and Truck
Mike 0407 989 927

Electrical

Andrews Electrical Systems Pty Ltd

Established 25 years • High Quality Guaranteed

- Residential ✓ Electrical Installations
- Commercial ✓ Electrical Maintenance
- Industrial ✓ Air Conditioning
- ✓ Telephone and TV
- ✓ CCTV and Data

Call Andrew **0420 956 432**
Email: andrewseperth@gmail.com

JURASSIC SPARK

COMMERCIAL • INDUSTRIAL

- ELECTRICAL
- REFRIGERATION & AIR CONDITIONING
- INSTRUMENTATION
- TYPE B GASFITTING

24/7 BREAKDOWN RESPONSE
FAULT FINDING | MAINTENANCE
COOL ROOMS & FREEZERS

BURNERS • BOILERS • TURBINES
MOTORS • PUMPS • VSDs
SWITCHBOARDS & TESTING

0419 944 031
JurassicSpark.com.au

Mrs Fixit!

Female Electrical Contractor
Free Quotes & No Call Out Fees

TV / ANTENNAS - LIGHTS - POWER POINTS
SAFETY SWITCHES / RCD'S - SMOKE DETECTORS
REPAIR & MAINTENANCE - HOT WATER SYSTEMS

Seniors / Pensioners / HCC Discounts
MARDI GLADWELL 0430 035 345

Gardening

All Areas

FULL-BLOWN Garden Maintenance

ABN: 77 592 171 029

- ✓ Rubbish Removal
- ✓ Mulching
- ✓ Lawn Mowing
- ✓ Planting ✓ Weeding
- ✓ Pruning ✓ Hedging
- ✓ Yard clean ups
- ✓ Ride on mowing
- ✓ Spraying
- ✓ Bush fire ready clean ups

FULLY INSURED
FREE QUOTES

Damien 0431 011 369
www.full-blowngarden.com

ASK ABOUT OUR
GREAT PRICES
FOR TRADES

Handyman

- Fencing • Gutter Cleaning • Shelving
- Furniture Repairs • Painting • Tiling • Paving
- Carpentry • Property Maintenance
- High Pressure Cleaning

Almost anything - just ask!
Pensioners Discount Free Quote
Mal **0400 250 761**

Limestone

Michael's Stonework (Servicing All areas)

Limestone & Coffee Rock
Small Retaining Walls, Steps, Pillars, Stone Pitching, Garden Beds

For a FREE quote & reliable service call:
0427 190 273

Painting

Tim Neideck Painting

Old or New. Big or Small.

Ph: **0433 600 485**
qfpaintingqualityfinish@outlook.com

Reg. No. 100548 & 100506 ABN 91 106 933 717

Scott Howard Painting Service

Reg. No. 4234

21 years experience

- Touch-ups • Repaints • Residential & Commercial
- Free Quotes • Reliable Service
- Quality Workmanship

0409 299 452
38 Cupello Drive, Swan View

WA COMPANY PAINTING

REPAINTS • INTERIOR • EXTERIOR

CALL TREV **0414 289 145**
WWW.PERTHPAINTING.COM

DISC. AVAILABLE PERTH PAINTING CONTRACTORS REG 6173

Plastering

EASTERN HILLS PLASTERING

ABN 69 373 874 693

All Aspects of Plastering - Concrete Skim
Coating - Acrylic Texture Finish - Renovations

30 YEARS EXPERIENCE - FREE QUOTES
TONY 0406 675 211
easternhillspastering@outlook.com

Plumbing

Hi I'm Local In Your Area Hot Water Expert

- ✓ Senior Discounts
- ✓ Upfront Pricing
- ✓ Fast Plumber
- ✓ Drains, Taps, Toilets

\$0 Call Out*

Plumbing Emergencies 24/7

6244 3226
*conditions apply PL9956

The Tap Doctor

FOR ALL PLUMBING & GAS

- Taps • Burst Pipes
- Toilets • Leak Detection
- Hot Water Systems • Blocked Drains

Call Today **1300 655 827**

Our Service Will Amaze You
www.thetapdoctor.com

LOCAL PLUMBER

PL9956

Same Day Service

Blocked Drain, Taps, Toilets

Burst Pipes, Hot Water
*conditions apply

Same Day Emergencies 24hrs
9468 2581

NO CALL OUT* + SENIOR DISCOUNT

Your Best Local Plumber!

Plumbing

Local Plumber

Same Day Service
Hot Water Expert

- Upfront Prices
- Pensioners Save
- Drains, Taps, Toilets
- Burst Pipes, Gas

Emergency Plumbing 24hrs
6118 6368
PL9956 *conditions apply

Renovations

Specialising in minor home renovations

Remove-add-relocate walls, windows and doors.
Convert-add rooms. Replace-add-repair ceilings.

Call Jeff **0403 737 097**

Roofing

A Backable Able Business DJ'sConstructions

ROOF TILE REPAIRS

For all your Roof Tile Repairs

Contact David for a free quote on
0413 240 203 or 9255 4003

Specialising in: Leak Repairs • Gutter Clean
• Tiling • Re-ridging • Re-pointing

YOUR LOCAL ROOF SPECIALIST

PROFESSIONAL SERVICE & REPAIRS

- METAL ROOFING | NEW AND REPLACEMENT
- GUTTERS & DOWNPIPES | NEW AND REPLACEMENT
- ROOF COATING AND RESTORATIONS
- MAINTENANCE
- LEAKS AND ROOF REPORTS

CONTACT PETE FOR A FREE QUOTE
0433 678 330

sales@prowestroofing.com.au
prowestroofing.com.au

AMC ROOFING

Specialising in All Tiled Roofing
New Roofs
Maintenance & Repairs

Free Quotes - Aaron Carter
Mob: 0417 930 817

RIDGE CAP KING

TILED ROOF RESTORATIONS

0447 234 603

Call Kieren today for a free quote
admin@ridgecapking.com.au

AR Specialist Roofing

Solutions for all your roofing needs including

- roof restoration • gutters
- leaks • downpipes • sheeting
- custom flashings • roof cleaning
- PATIO BUILDING

Call Andrew
0408 192 021
arspecialistroofing@gmail.com

Tiling

Bathroom Renovations & General Tiling

45 Years Exp. - Free Quotes
Call Sergio 0412 978 359

SPACE AVAILABLE FOR YOUR BUSINESS ADVERTISEMENT

Tree Services

TLC Tree Services has merged with

Payne's Tree Services

FREE QUOTES AND ADVICE

- MULCHING • LAND CLEARING
- STUMP GRINDING
- TREE LOPPING

Call Clint on **0455 132 014**
paynestreeservices.com.au

Helping people manage trees for over 30 years

CPD TREES

ARBORISTS

Michael Byrne Dip. Arboriculture
0411 750 342
www.cpdtrees.com.au
arborist@cpdtrees.com.au

HILLS TREE SOLUTIONS

For all your Tree Lopping and Stumpgrinding Needs

- Locally owned & operated • Call 24/7
- Fully Insured • Cheapest Prices Guaranteed
- Horizon Power Accredited • Servicing All Areas

CALL 9295 6511 OR 0414 438 610

"Let's keep local people in work"

Support your local Business

ECHO NEWS

www.echonepaper.com.au

ECHO NEWS

Indemnity and Warranty

ECHO NEWSPAPER
CONDITIONS OF ACCEPTANCE

When an individual or other legal entity ("the Customer") requests Echo Newspaper ("Echo") to place an advertisement in this Newspaper, they agree to be bound by the following terms and conditions:

1. Echo, at its sole discretion, may decline to publish any advertisement requested by a Customer. If Echo decides not to publish a particular advertisement, there is no obligation on Echo to disclose the reasons for its decision, and Echo will not be liable for any loss or damage occasioned to the Customer as a result of the decision.
2. Echo will not be liable for any loss or damage caused to a Customer as a result of delay or as a result of Echo failing to place a requested advertisement or publishing an advertisement containing an error or omission.
3. Echo may, at its sole discretion, decide to refund a Customer a portion of the cost of the advertisement if it forms the view that the error was not attributable to the Customer and the Customer notifies Echo of the error or omission before 5.00pm on the day the advertisement first appears in the Newspaper.
4. Complaints concerning the accuracy of any invoice must be notified to Echo within 30 days from the end of the month in which the advertisement was published, after which time the Customer forfeits any rights it may have had to challenge the invoices.
5. The Customer warrants that publication of the requested advertisement/s will not contravene any laws, whether statutory, equitable or otherwise, and agrees to wholly indemnify Echo (and its employees and agents) against all expenses, loss and damage arising directly or indirectly from the publication of the advertisement/s.

Looking for a tradie?
Now you can find a tradie in the paper
AND on our website
ANYTIME GO TO
www.echonepaper.com.au

ECHO Classifieds **9374 6666**

classifieds@echo-news.com
www.echonepaper.com.au

Ceiling Repairs

New gyprock walls and ceilings. Repair old ceilings. Professional tradesman. Peter 0400 993 387.

Gutter Cleaning

Gutter cleaning & solar panel cleaning. Jason 0421 455 546.

Plumbing

MASTERS PLUMBINGAS
All Plumbing & Gas work, Blockages, Hot water units, Leaks, Renovations, Burst pipes. 24/7 Emergency Service. NO CALL OUT FEE
David: 0416 644 191. PL-9554 GF-011284

Computer Repairs

ALPHASEC TECHNOLOGIES

Computer Repairs

Home & Small Business IT
Virus Removal • Wi-Fi
On-Site & Remote Support
08 6256 8219
alphasectech.com.au

Custom Video & DVD Solutions

Video Transfers to USB starting from \$45 - 6393 7298.

Handyman

ALL YOUR NEEDS - external / internal painting & roof painting, high pressure cleaning & odd jobs & gyprock repairs - call Markus today - 0433 958 025.

Regrouting

Bathroom Regrouting. Call Andrew 0413 158 763.

Roofing

Repair all leaks. Roof painting & coating. Call Markus - 0433 958 025.

Drainage

SEPTIC TANKS PUMPED.
Blocked drains. Septic tanks repaired. Leach drains renewed and repaired. Storm water drains. Gas/Elec hot water installs. Same day. Pensioner discount. Call Trevor 0419 773 111.

WILLIS BUILDING & MAINTENANCE SERVICE

Specialising in all house maintenance, pergolas, decking, verandas, painting and carpentry. 0487 093 355.

Roof Repairs

Roof leaks, gutter cleaning, solar panel cleaning, roof cleaning. 0421 455 546.

Electrician

LITL Electrical
All types of electrical work & air conditioning. **Jeff Overton** 0483 858 603. EC14844

Hobby Farm Services

Slashing, mowing, wool buying, firebreaks & property cleanups. Ian 0458 510 048.

Solar Services

Solar Panel Cleaning with Anti Mould & Solar Wax Treatment. 0421 455 546.

Firewood

Firewood for sale. Dry Jarrah/Marri 6x6 cage load. Free Delivery. 0429 988 079.
Ute load of dry seasoned hardwood. Cost \$350. Contact Shane. 0422 652 249.

Lawn Mowing

Ride on mowing services in the Hills area. Ph 0400 365 887.

Wanted to Buy

MEDALS and Militaria bought by genuine local collector top prices paid 0407 982 215.

Gardening

Bilby's Garden Services
Weed, Prune, Mow & Slash. Free Quotes 0416 855 335.
Ian Mac's whipper snipping, chain sawing and weeding. Small tree lopping jobs. 0426 211 137.

Painting

For all your painting needs. Call Markus today - 0433 958 025.
Painting & Property Maintenance. 0477 660 703. Local.
Steve Gregory painting service. Mobile 0417 926 027. Reg # 5098.

Window Cleaning

Tatania's Window Cleaning. Tracks. Frames & Fly screens. 0467 282 127.

Employment

ECHO NEWS Privately owned & proudly independent

The Echo Newspaper is looking to fill the following position

JUNIOR - ADVERTISING SALESPERSON

If you enjoy meeting new people and have an outgoing personality, then this is the job for you

We are a small, privately owned and independent newspaper looking for an energetic and vibrant person to join our team.

The successful applicant will have:

- A current "C" class drivers licence and reliable vehicle.
- A smart appearance with a strong commitment to customer service and the ability to develop and implement successful sales strategies, including digital, by building and maintaining long lasting client relationships.

- Strong negotiation verbal and written skills with excellent presentation and a professional phone manner is a must.

This position is Monday-Friday and offers a salary package, including a commission structure with a weekly car allowance.

Please email your resume with a cover letter to:
General Manager / Editor Peter Lewis
E: peter.lewis@echo-news.com
All applications will be treated with the strictest confidence.

Flooding a City of Swan responsibility: DPLH

From p3.
"In the development of large land parcels through sub-divisions, there are numerous documents related to water management at differing levels - district, urban and local - which are approved by bodies including the WAPC, DPLH and DWER, with input from the city," he said.
"The city has sole responsibility for the review of construction of the physical infrastructure for installation in the sub-division, in alignment with previously endorsed plans. This is effectively the last approval in a long line.
"Ultimately the city inherits the public assets, and so it is in the community's best interest to ensure it all functions as originally intended, but the city is not the authority responsible for approving the initial documents which set the direction for subsequent plans and reports."

Mr Cain confirmed DPLH was assisting with the assessment of the affected area.
"Options currently being investigated seek to prevent infiltration of stormwater and look at alternate methods of re-use or disposal of this groundwater," he said.
"Further investigation is still required to determine the specific causes of the problem, however, all potential solutions identified will require assistance and approval of state government departments to implement."
As reported in *Infiltration not a feasible strategy: SCEA vice chair* (Echo News, October 31, 2025) Ms Zeck acknowledged the City of Swan had limited decision-making power and believed the solution had to involve more than just the city.
"Whatever happens has to have approval from the WAPC," she said at the time.

Chalice Mining infrastructure corridors concerns in Chittering

From p3.
"We bought this property for the lifestyle and nature aspect.
"There's plenty of wildlife living out the back of our block in the environmental corridor, which is important to us, and we want to do our part in protecting that nature.
"It's been extremely stressful and time-consuming since we found out.
"This has taken over our lives. It was our dream block - our future - and now everything is uncertain."
The group advocates for infrastructure corridors to be moved away from private rural residential properties and environmentally sensitive areas.
"We're asking for transparency, proper consultation and genuine consideration of alternative routes," Ms Mchiggins said.
"We feel as landowners, we've received inconsistent information from Chalice."
Residents have said that the information given to them by Chalice has varied from resident to resident. They claim it is unclear which properties would have the powerlines underground and not overhead.
Long time resident Christopher Carr said he and his wife are not against the mine, but that doesn't erase their concerns.
"We hope that the Gonville mine will be a success and provide substantial employment for the growing number of FIFO workers who are currently settling in the Chittering Valley and will be able to drive to work instead of catching a plane," he said.
"We even have 7500 shares in Chalice, but it looks as though there will be powerlines from the front of our orchard and be highly visible from our home.
"We could put up with that if the cables were located

ed underground. There will be much disturbance and noise during construction which will shatter what is our peaceful retirement home but that is the price of progress we suppose.
"The beauty of the Chittering Valley belongs to every Western Australian."
Chalice's spokesperson said the company preferred to engage with landholders individually as the details relevant to each landholder is specific to their property.
"Chalice is engaging directly with each landholder whose property is directly affected by the corridor, as well as with neighbouring landholders who have raised questions or concerns," the spokesperson said.
"The preferred corridor is subject to ongoing refinement as part of the environmental assessment and landholder engagement process and was selected through a deliberate, multi-stage process.
"The first pass involved facilitated workshops with Water Corporation, Western Power, and qualified planning consultants.
"Those route options were then tested through direct landholder engagement during 2025 and ground surveys identified environmental constraints - including known habitat for threatened species - or where landholder feedback showed a route was unworkable, routes were cut.
"Construction on the project, subject to all approvals and a positive final investment decision, is currently targeted for 2028."
The Environmental Protection Authority is currently assessing the adequacy of Chalice's Environmental Review Document before it is released for public comment.
Chalice Mining is also running a Local Voices survey, which is scheduled to close on Sunday, July 5.

No progress on Lloyd St Bridge: Libs

From p7.
"The fact is, commonwealth Aboriginal heritage requirements must be addressed before construction can begin on any project."
Mr Catania said Anthony Spagnolo and Senator Brockman either didn't understand the statutory approval process for major infrastructure projects, or they're deliberately ignoring it for their own political gain.
"As the Member for Midland, I have made delivering quality infrastructure for Midland and addressing traffic congestion some of my key priorities because our community deserves co-ordinated, long-term solutions," he said.
"I have established the Midland Infrastructure, Planning and Transport Working Group, bringing together the City of Swan and other key state government agencies to drive the delivery of major infrastructure that will unlock Midland's future growth."
Hasluck MP Tania Lawrence said Mr Spagnolo and Senator Brockman were once again engaging

in silly, opportunistic commentary without acknowledging all the facts, following their previous inaccurate remarks regarding federal funding for St John of God Hospital which then had to be corrected.
"Together with the state member Steve Catania MP, I am proud to advocate and deliver for our community. Which, in the Midland precinct alone, now includes the Midland Train Station, Midland Bus Interchange and five storey carpark, the Midland TAFE renewables training facility, community battery in Stratton, Midland Medicare Urgent Care Clinic, Medicare Mental Health and Medicare Kid's Mental Health Hub.
"These are real projects and investments that are making a difference locally on the back of my advocacy.
"I have seen the revised plans for the Lloyd Street bridge which, having followed extensive consultation and engineering designing, will result in a better outcome for our community and for the health of the Helena River system."

Town moves to reclaim historic Bassendean cottage

From p11.
"Independent benchmarking through the WA Local Government Financial Index shows consistently strong results across key indicators, including liquidity, debt capacity and long-term financial sustainability.
"Coupled with more than 80 per cent growth in reserves over the past five years, this gives the town confidence it is now better placed to oversee the restoration of the Pensioner Guard Cottage and ensure it is completed to an appropriate standard for the community."
Mr Asmus said the town was working through external funding opportunities and staged council investment over time.

"The town will actively pursue opportunities through heritage and community funding programs, including organisations such as Lotterywest and the National Trust.
"In parallel, a suitable management arrangement will be considered through an open process to support the cottage's ongoing operation, maintenance and activation once restored."
According to Mr Asmus, funding has already been allocated in the 2026/27 budget for the initial planning works and informs the future budget process.
"The immediate next steps include undertaking a structural assessment of the building, progressing concept planning, and preparing grant submissions to support the restoration," he said.

Big-lead win for Gidgegannup in round 11



Gidgegannup was away with a big lead by quarter three and finished the game with an 80-point lead.

BRIAN PALLISTER

GIDGEGANNUP Bulldogs and Pickering Brook Hawks played out a goalless first quarter in their round 11 game.

Both teams had their opportunities however the Hawks' attempts at goal drifted into the pocket and over the boundary line.

The Bulldogs missed to either side of the goal posts to register behinds.

The ball was rarely seen on the club room wing as the play continued up and down the outer side.

Highlights were few and far between.

The second quarter started with the Bulldogs having kicked the only three behinds that appeared on the scoreboard.

Gidgegannup were quick to take control with five early goals as Bull-

dog Tim Tanner kicking the first three of his seven goals for the game.

Teammate Declan White battled out the ruck contests against Hawk Jackson Shilling.

Bulldog Liam Marriott broke free of the tacklers to deliver the ball forward where Hayden Blackie marked and converted his kick at goal.

From there the goals dried up for the rest of the quarter.

The Bulldogs had opened up a 33-point lead heading into the third quarter.

The Hawks finally managed their first and only match goal through Brett Baker after some clever roving work by Jonathon Vecchio when he collected a well delivered ruck tap from Jackson Shilling and the drive the ball forward.

The Bulldogs backline was holding firm with Alan Rigg, Coby Campbell

and Dylan Cahill repelling the Hawks' advances.

After a four goal to one quarter Gidgegannup had extended their lead to 51 points to commence the last quarter.

Tristan Lilleyman was a major ball winner for the Hawks as he controlled most of the play on his wing.

Unfortunately, his efforts along with those of Jacob Ouwendyk and Brendyn McLeish weren't enough to overcome the Bulldogs' spread of contributors.

The Hawks could only manage another two behinds to the Bulldogs' five goals in the last quarter.

Tim Tanner was the dominant scorer for the game while also spending time on the ball.

In the end, it was the Bulldogs who won the game with a final score of 14.10 (94) defeating Pickering Brook 1.8 (14)



Lane Thalmann took out gold at the world hip hop championships in Orlando, Florida.

Hills teen takes the Hip Hop world title

MIKE PEETERS

LESMURDIE resident and Mazenod College Year 10 student Lane Thalmann has won gold at the International Cheer Union (ICU) World Hip Hop Championships in Florida US.

The global event was held at the ESPN Wide World of Sports Orlando complex in April with athletes from 123 countries competing.

As part of Team Australia, Mr Thalmann put on a first class performance in unified hip hop and breakdance after months of solid training that involved travelling to Adelaide, Melbourne and Sydney.

Mr Thalmann said he had always liked pop music and was inspired by his older sister Elle who had practised dancing and cheerleading from a young age.

"I first tried out for world championship selection in October last year and continued training right through until March this year," Mr Thalmann said.

"Ours was an open team of all ages with most of the competitors coming from Sydney so it was good for me to be able to represent Perth in the team."

He said it was incredible to be part of a world championship winning team.

Local Real Estate

**Residential
Commercial
Rural & Country**

Worst housing affordability in 30 years: REIA

HOUSING affordability in WA is at the worst level in the 30 years since records began in 1996, according to data from the Real Estate Institute of Australia (REIA).

The latest REIA Housing Affordability Report shows the proportion of family income needed to meet loan repayments in WA rose 2.3 percentage points over the March 2026 quarter to 45.9 per cent.

This eclipses the previous peak of 41.2 per cent set in the September 2008 quarter.

Real Estate Institute of Western Australia (REIWA) President Suzanne Brown said the decline in affordability was driven by increases in interest rates in February and March, combined with ongoing strong growth in property prices in the first three months of the year.

"Most of the March quarter was characterised by lower-than-average new listings and consistently strong demand," she said.

"This saw the rate of price growth accelerate, with Perth's median house sale price reaching \$900,000 at the end of the quarter.

"This was an increase of 5.3 per cent on the December 2025 quarter.

"The median unit sale price was \$642,000 at the end of the March quarter, up 7 per cent on the previous quarter.

"Strong price growth usually leads to larger mortgages, and when you combine this with

two interest rate increases that have added approximately \$200 per month to a mortgage of \$700,000, you see a sharp decline in affordability.

"Although the rate of price growth is easing over the June quarter, a third interest rate increase in May is likely to see affordability decline further."

According to REIWA, housing affordability in WA also declined over the year, with the proportion of family income required to meet loan repayments increasing 5.2 percentage points from 40.7 per cent in the March 2025 quarter.

Despite housing affordability continuing to decline, WA remained relatively affordable when compared with many other parts of the country.

Only Tasmania, the Northern Territory and the Australian Capital Territory were more affordable for home buyers.

New South Wales was the least affordable state, with 58.4 per cent of family income required to meet mortgage repayments.

REIWA reported that loan activity was decreasing with the average loan size being \$702,699.

Ms Brown said the decline in the number of loans was to be expected, as was the increase in average loan size.

"While demand was strong in the March



quarter, listings were lower than usual, which resulted in fewer sales and, therefore, fewer loans," she said.

"This increase in the average loan size reflects the strong growth in property prices, with people needing larger loans to purchase a property."

As of June 28, sales transactions in Perth last week were up 1.9 per cent with Brabham being one of the top selling suburbs according to REIWA.

Brabham sold nine houses, only putting it behind Maylands with 11 and Balga with 14 in terms of properties sold.

"Personal service,
professional advice,
at the right price!"

Mobility in Style

Sleep well. Live well. Great life.

"Locals
Supporting
Locals"

Split King Adjustable Base and Mattress

Key Features:

- Head and Foot Raise
- Programmable Memory Positions
- Zero Gravity, Anti Snore
- One Touch Flat Button & Torch
- Wireless Remote Control
- Backup Battery
- Adjustable Legs
- 10-Year Warranty +
2-Year Electrical Warranty

Don't miss out!
Limited stock
available.

NOW
\$3500



Go Light Scooter

Your ultimate travel
companion—lightweight and
compact at only 15.6 kg.

FOR ONLY **\$3495**

Key Features:

- Operational Range: Up to 15 km
- Safe Working Load: 125 kg
- Cobalt Blue and Red
- Easily Transportable
- Motor Power: 150 W
- Removable Battery
- Battery: Lithium 25.2 V 10.4 Ah
- Ergonomic seat design
- Turning Radius: 259 mm
- Adjustable Tiller
- Indoor & Outdoor Use
- Optional Accessories:
Rear Front Bags
- Dimensions:
1054 x 454 x 889 mm
Folded Dimensions 807 x
454 x 459 mm. (L x W x H)

Pathrider 10 DX (EZ Turn) Scooter

Style,
Comfort and
Performance.

\$3495



Key Features:

- Range Per Charge: Up to 25 km
- Max Weight Capacity: 158 kg
- Maximum Speed: 8.9 km/h
- Length: 119.4 cm Width: 56.2 cm
- Colour: Viper Blue

Lift Chairs

Our lift chair recliners offer
the perfect combination of
comfort, performance and
style, making them both
functional and an elegant
addition to your home.

Key Features:

- 2 motors
- Massage and Heat
- Fabric or Leather
- Lumbar Support and Headrest
- 2-Year Electrical Warranty



NOW from
\$1099

Walkers



20%
OFF
Selected
Walkers

MedAlert 4G Watch

BLOOD PRESSURE FUNCTION
TWO WAY COMMUNICATION
FALL DETECTION ALERTING
HEART RATE MONITOR



Includes Monitoring
\$499



NDIS Registered Provider

FREE IN-HOME TRIAL. RENT TRIAL OPTIONS AVAILABLE FOR NDIS CLIENTS.

FREE DELIVERY PERTH METRO
FREE INSTALLATION AND REMOVAL
OF OLD MATTRESS

CALL US ON
1300 BARKERS (227 537)

<https://barkersbeddingandmobility.com.au/>

Follow us on
Interest-Free and
Lay-by Options
Available.
T&Cs Apply.

OPENING HOURS:
Monday-Friday:
9.30am-5pm

NEW LOCATION
321 Great Eastern Hwy, Midvale
Opposite Clark Rubber.

Barkers
Bedding & Mobility

Perth's most trusted brand
for more than 50 years



BE A

HERO

THIS FLU SEASON

Now
extended
to 31st
July

With our flu vaccination service
Get your flu shot

FREE



Book now

*Terms, conditions and eligibility criteria applies. Available at participating Discount Drug Stores pharmacies. Fees apply where customers are not eligible for the National Immunisation Program or state-based free flu programs. Speak to our pharmacist for more information. Standard egg based trivalent.

COVID BOOSTER VACCINATIONS NOW ALSO AVAILABLE IN STORE

**Greg's Discount
Drug Store Midland**

OPEN 7 DAYS A WEEK 8AM-8PM

243 Great Eastern Hwy, Midland 6056